



## GILLISSEN KOTTER 1320

## BROKER'S COMMENTS

This Gillissen Kotter 1320 is very much suitable for longer stays onboard and extended cruising on the European waters. With her Naiad stabilizer system installed in 2011, at sea she feels as comfortable as your sofa at home. The quality in build and finishing from P. Valk Shipyard is renowned and appreciated so this Gillissen Kotter 1320 can be the gentleman's motor yacht for you to. Onboard you will find many creature comforts like central heating, ensuite facilities with separate shower, ample storage and tank capacity. She is ready to explore the French Canals also.

*Marc Weijenberg*

## SPECIFICATIONS

<b>Dimensions</b>	13.20 x 4.00 x 1.25 (m)	<b>Builder</b>	Jachtwerf P. Valk Franeker
<b>Built</b>	1982	<b>Cabins</b>	2
<b>Material</b>	Steel	<b>Berths</b>	6
<b>Engine(s)</b>	1 x Mercedes OM401 diesel	<b>Hp/Kw</b>	175.00 (hp), 128.63 (kw)
<b>Asking price</b>	sold (VAT )	<b>Lying</b>	at sales office

## CONTACT

<b>Sales office</b>	De Valk Sint Annaland B.V.	<b>Telephone</b>	+31 (0)166 601 000
<b>Address</b>	Koelhuisweg 4 4697 RM Sint Annaland NL	<b>E-mail</b>	sintannaland@devalk.nl

## DISCLAIMER

These particulars are given in good faith as supplied but cannot be guaranteed.



## GENERAL

Model	GILLISSEN KOTTER 1320
Type	motor yacht
LOA (m)	13,20
Beam (m)	4,00
Draft (m)	1,25
Air draft (m)	3,25
Air draft min (m)	9,00
Headroom (m)	1,95
Year built	1982
Builder	Jachtwerf P. Valk Franeker
Country	The Netherlands
Designer	Th. Gillissen
Displacement (t)	21
CE norm	NA
Hull material	steel
Hull colour	blue
Hull thickness (mm)	6-5mm
Hull shape	round-bilged
Bilge keels	yes
Superstructure material	steel
Rubbing strake	stainless steel
Deck material	steel
Deck finish	teak (1997, 20mm)
Superstructure deck finish	teak (2011)
Cockpit deck finish	teak
Dorades	2 x
Window frame	aluminium
Window material	tempered glass Securit
Deckhatch	2 x
Portholes	brass 12 x



Insulation	rockwool
Mast can be lowered	manual Winch/lier
Steadying sail with mast	(2018)
Fuel tank (litre)	steel 1200
Freshwater tank (litre)	stainless steel 1000
Blackwater tank (litre)	polyethylene 84
Blackwater tank extraction	deck extraction + pump
Inside helm position	Capilano hydraulic
Outside helm position	hydraulic Capilano
More info on hull	Stripped + new coatings (2017)
More info on paintwork	Hull and superstructure painted 2018/19
Extra info	Stainless steel chainlocker

## ACCOMMODATION

Cabins	2
Berths	6
Interior	teak
Floor	teak and holly
Open cockpit	yes
Aft deck	yes
Pilot house/deck saloon	yes
Headroom saloon (m)	1,92 - 2,10
Sliding roof	
Heating	central heating Webasto DBW2010 (11,6kW 2016)
Aft Cabin	yes
Dinette to convert into berth	1,85 x 1,18
Galley	yes
Countertop	wood
Sink	stainless steel
Cooker	ceramic 4 burner (220v)
Fridge	Waeco (12v)



Freezer	Engel (220v)
Hot water system	220V + engine Quick
Water pressure system	electrical
Owners cabin	twin single
Bed length (m)	2,00 x 0,90
Wardrobe	hanging/drawers/shelves
Bathroom	en suite I
Toilet	en suite
Toilet system	electric Rheinstrom
Wash basin	in the bathroom
Shower	separate
Bath tub	en suite
Guest cabin 1	twin single
Bed length (m)	2,00 x 0,80
Wardrobe	hanging and shelves
Washing machine	Eumenia (2008)

## MACHINERY

No of engines	1
Make	Mercedes
Type	OM401
HP	175
kW	128,63
Fuel	diesel
Year installed	1982
Maximum speed (kn)	8
Cruising speed (kn)	7
Consumption (l/hr)	7
Engine cooling system	closed keelcooling
Drive	shaft
Engine controls	bowden cable



<b>Gearbox</b>	Twin Disc
<b>Bowthruster</b>	electric Sidepower SP240TC1 proportional (2008)
<b>Exhaust</b>	watercooled
<b>Propeller type</b>	fixed
<b>Propeller blades</b>	3
<b>Propeller shaft material</b>	stainless steel
<b>Shaft lubrication</b>	oilbath (overhauled 2005)
<b>Manual bilge pump</b>	1 x
<b>Electric bilge pump</b>	1 x
<b>Bilge alarm</b>	yes
<b>Electrical installation</b>	24/220v
<b>Generator</b>	silent separator Whisper 8 (6,5kW 2007)
<b>Running hours generator</b>	yes
<b>Start battery</b>	2 x 220ah
<b>Service battery</b>	3 x 230ah
<b>Bowthruster battery</b>	2 x Mastervolt 270ah + Mastervolt 24v/25amp
<b>Battery monitor</b>	Victron Masterlink BTMIII
<b>Battery charger/inverter</b>	Victron Quattro (2007) 24v/5000watt/100amp
<b>Diode battery combiners</b>	yes
<b>Shorepower</b>	with cable
<b>Stabilizers</b>	fin Naiad (2011)
<b>Extra info</b>	Positive engine survey report by MTU-Benelux (October 2020)
<b>Extra info</b>	New alternator on main engine (2018)
<b>Extra info</b>	The engine has been professionally maintained by MTU Benelux.

## NAVIGATION

<b>Electric compass</b>	Simrad IS15 (2008)
<b>Depth sounder</b>	Simrad IS15 (2008)
<b>Log</b>	Simrad IS15 (2008)
<b>Windset</b>	Simrad IS15 (2008)
<b>Repeater</b>	Simrad IS15's (2008)



VHF	Simrad RS82 (2008)
Autopilot	Simrad AP25 (2008) + repeater
Rudder angle indicator	Simrad IS15 (2008)
Radar	Simrad 4kW (2008)
Plotter/GPS	Simrad CX44 (2008) + Simrad DS44 repeater (2008)
Electronic chart(s)	5 x (Europe)
AIS transponder	Icom (2017) + AI50 display outside
Navigation lights	yes
Searchlight	yes

## EQUIPMENT

Bimini	(2014) 2-part
Cockpit table	yes
Boarding ladder	aluminum
Bow ladder	Aluminum
Anchor	Pool
Anchor chain	50 mtr
Anchor 2	
Anchor chain	50 mtr line
Windlass	electrical Vetus (24v)
Capstan	yes
Dinghy	rigid inflatable (2010)
Outboard	Honda BF5A4 (2004) 4-stroke
Davits	Hydraulic
Sea railing	wire
Grab rail (superstructure)	teak
Railing side opening gates	2 x
Pushpit	With teak caprail
Pulpit	yes
Life raft	container ORC Liferaft
Life raft (pers)	4



Last life raft survey	(needs service)
Lifebuoy	2 x
Wiper	1 x
Clearview window	2 x Speich
Horn	electric
Fenders	yes
Mooring lines	yes
Spare parts	(for engine)
TV	On lift retractable
Radio-cd player	3 x
Speakers in salon	yes
Speakers in cabin	yes
Clock - barometer	yes
Fire extinguisher	2 x
Latest extinguisher survey	(2018)
Extinguisher in engine room	(2019)





# GILLISSEN KOTTER 1320







# GILLISSEN KOTTER 1320



# GILLISSEN KOTTER 1320

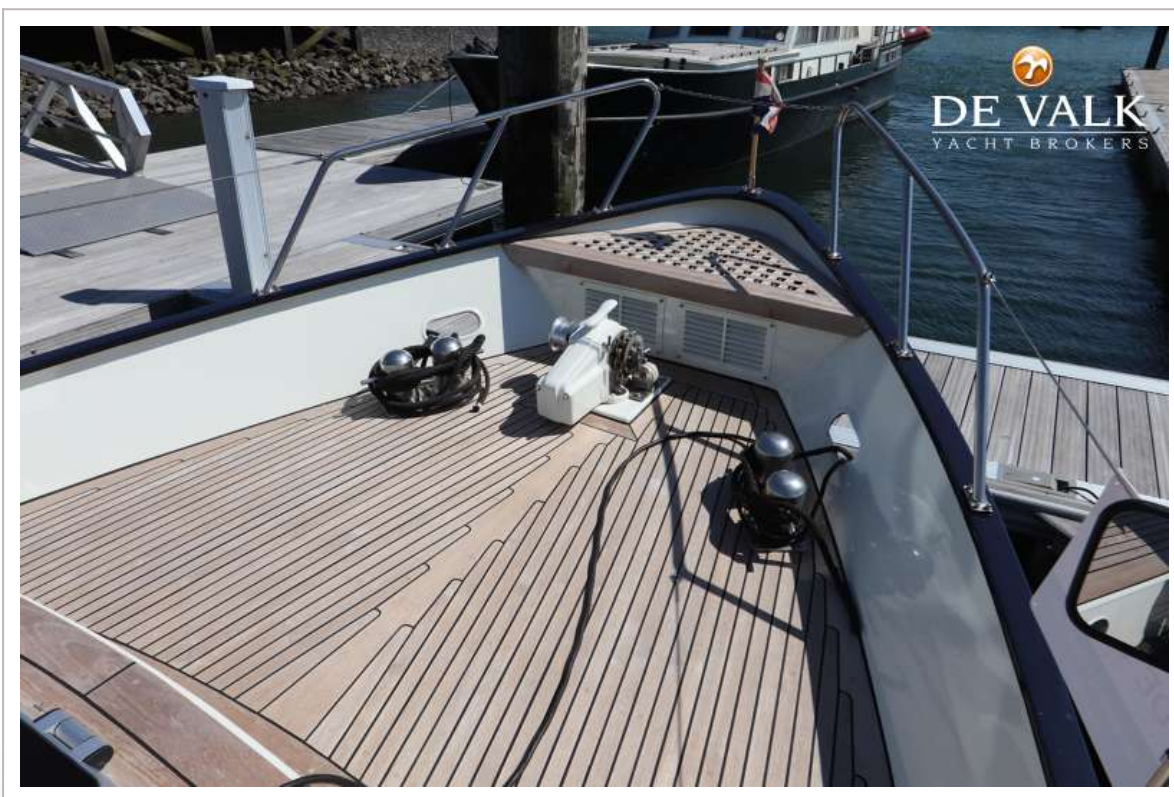






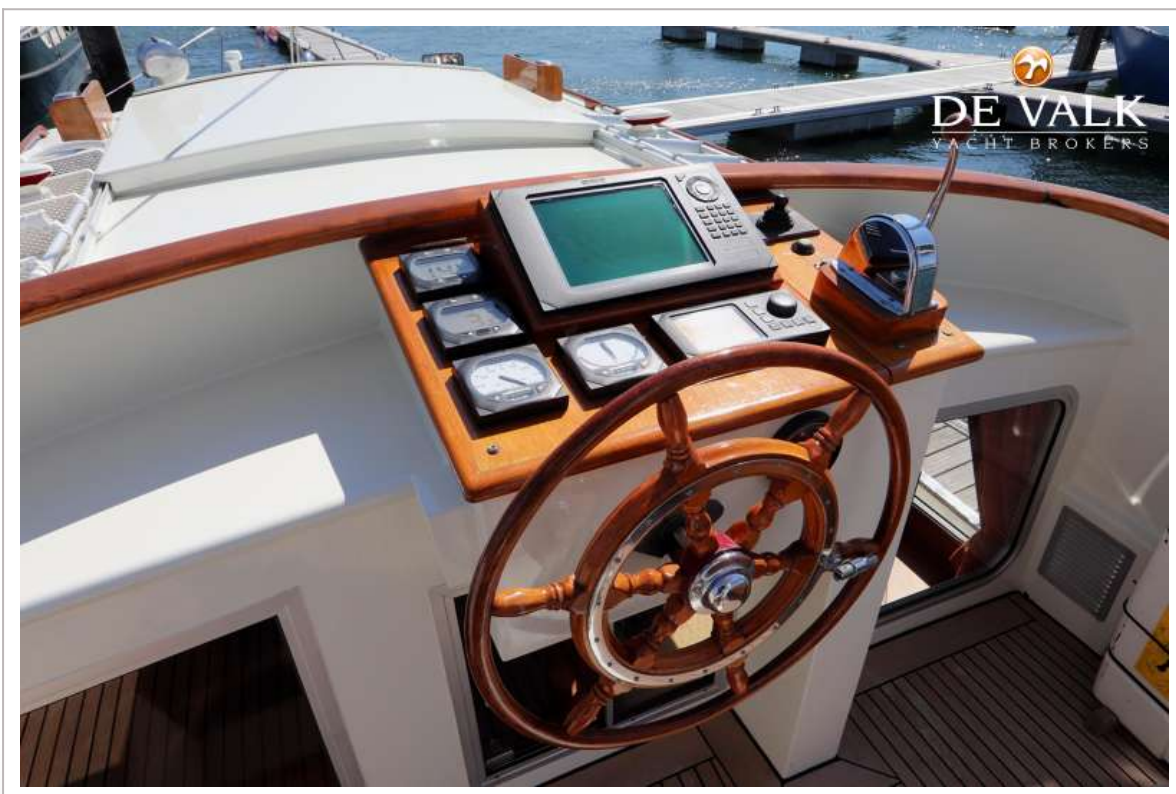


# GILLISSEN KOTTER 1320





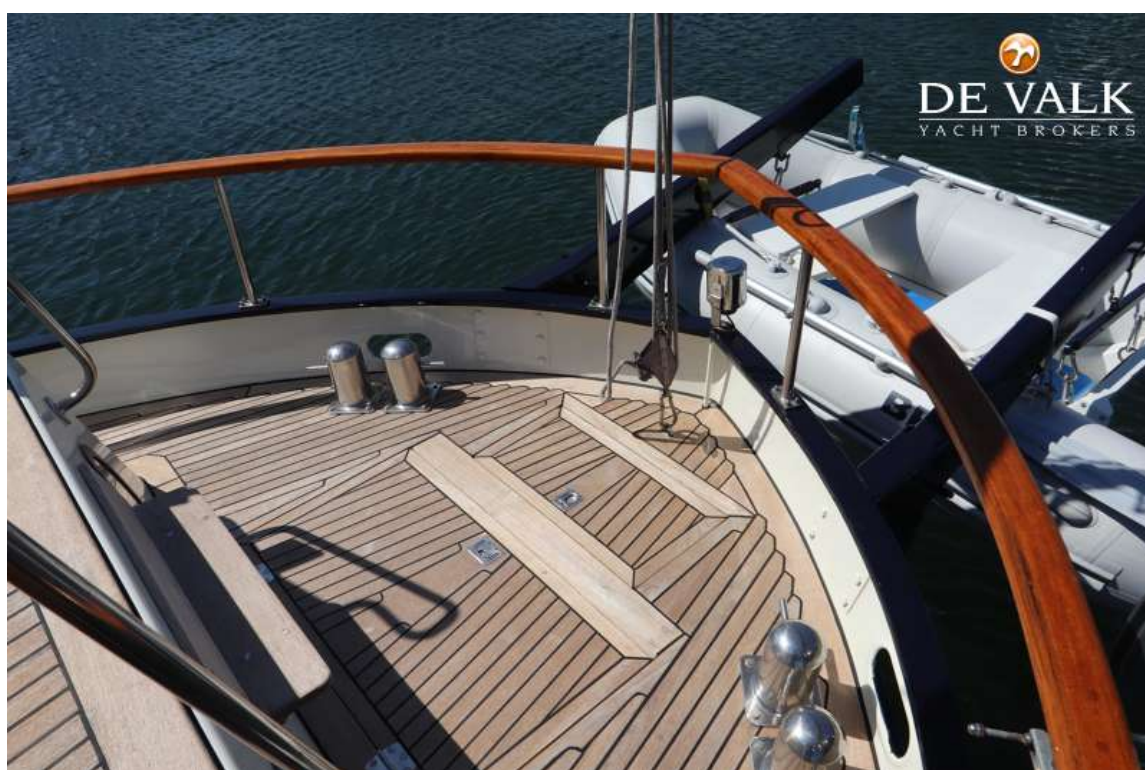
# GILLISSEN KOTTER 1320







# GILLISSEN KOTTER 1320

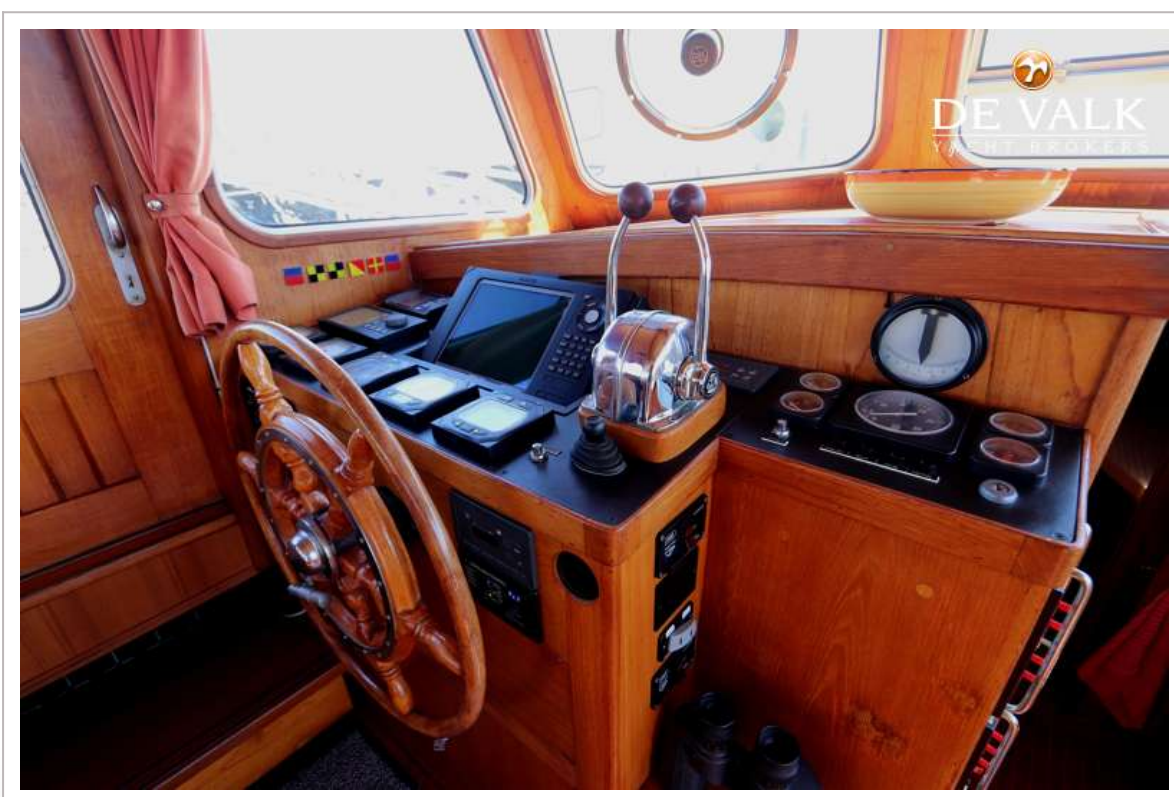


# GILLISSEN KOTTER 1320

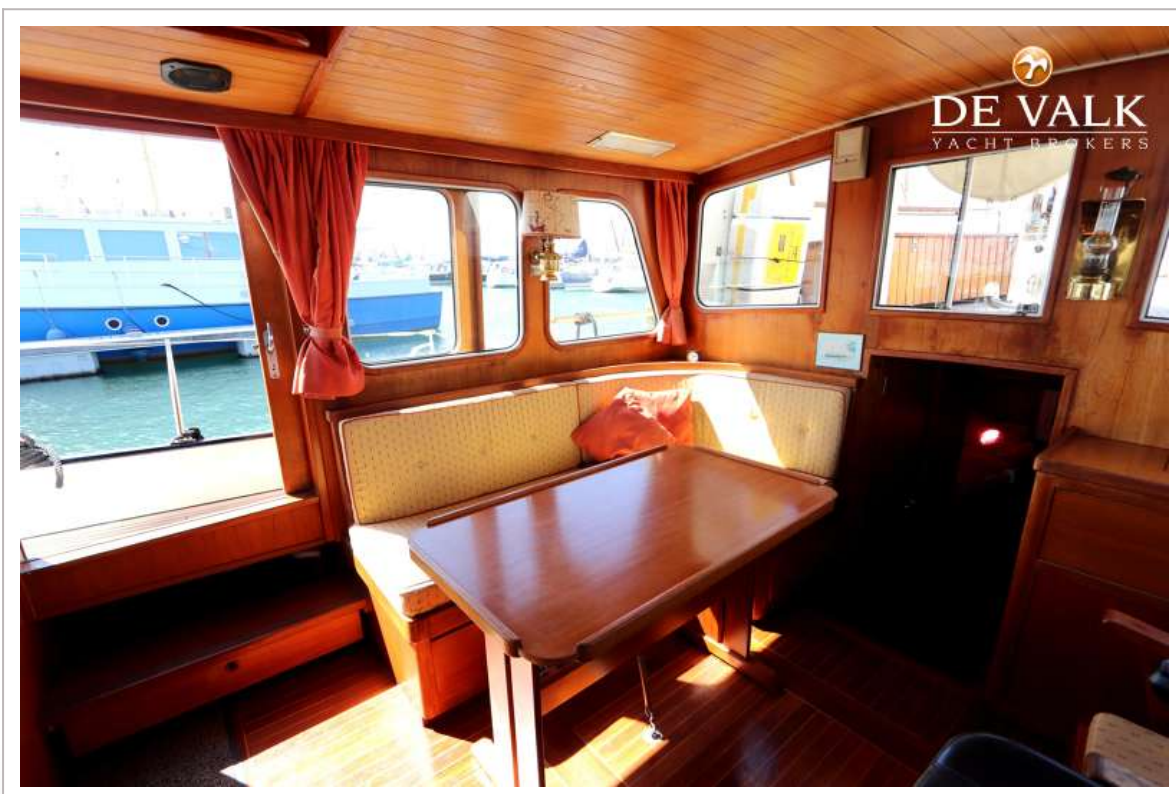




# GILLISSEN KOTTER 1320

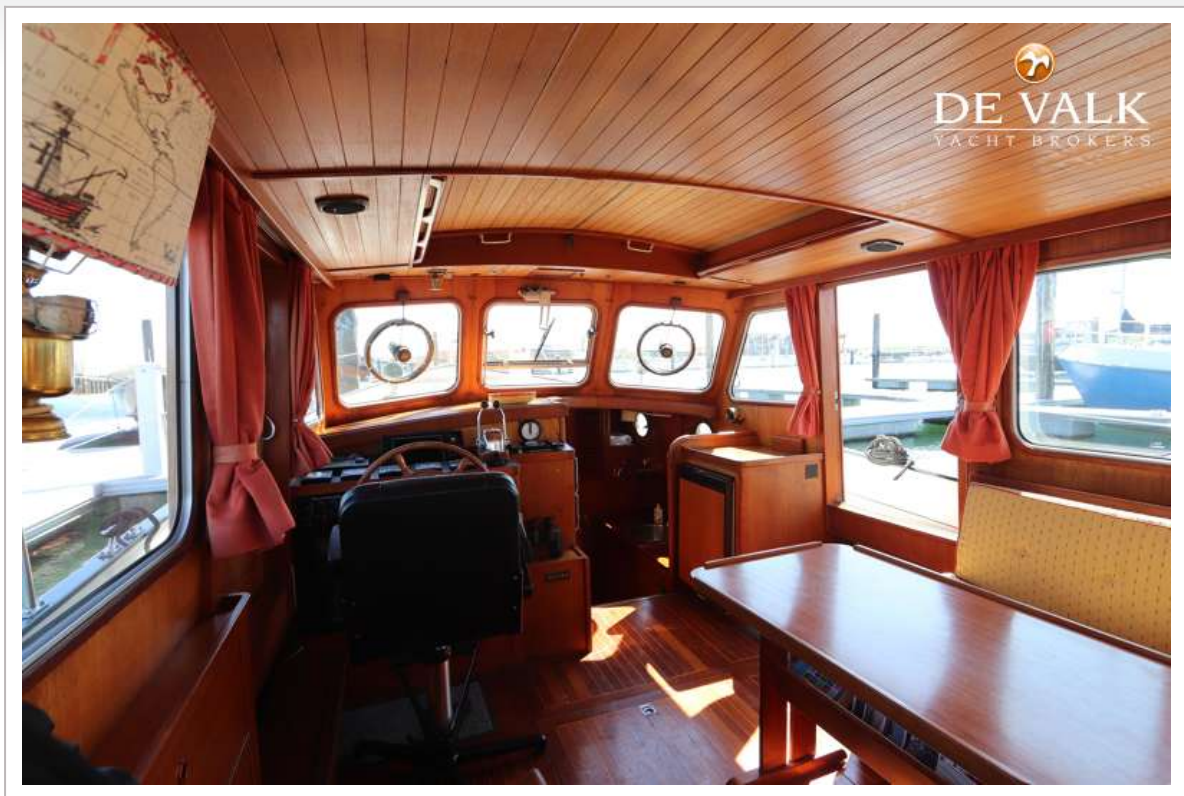


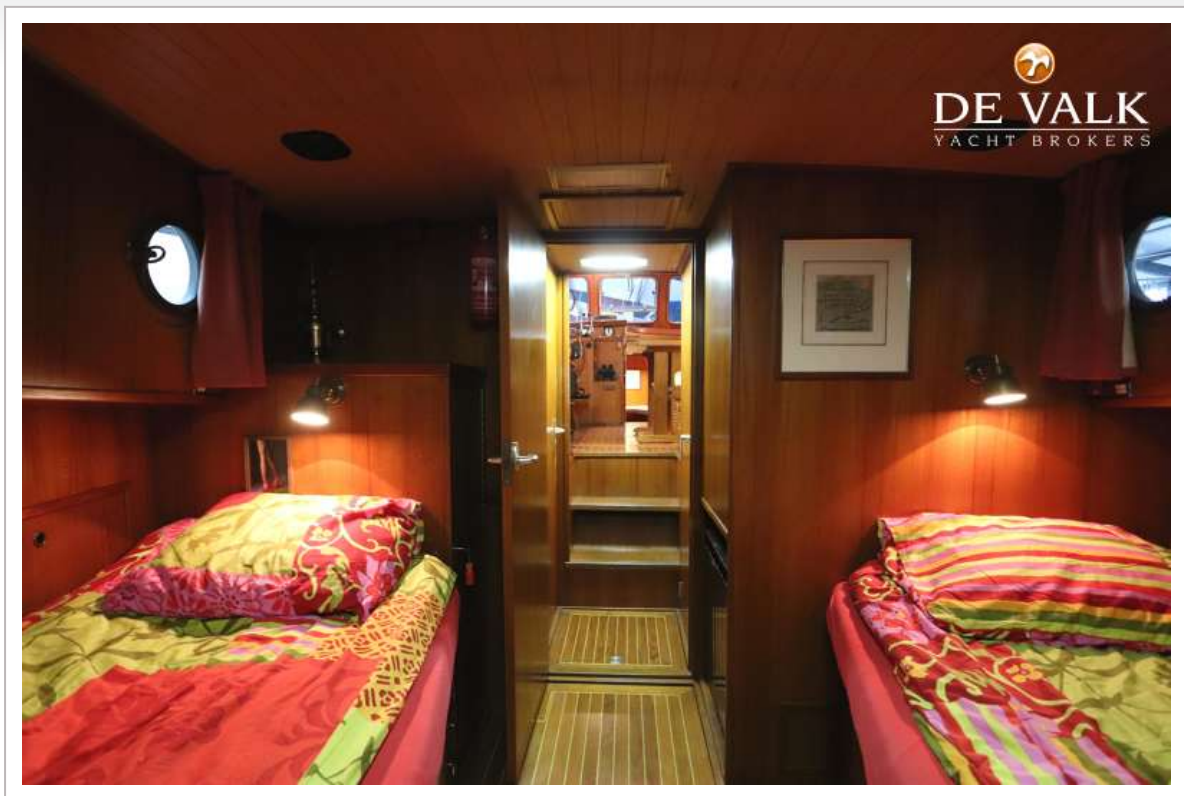
# GILLISSEN KOTTER 1320





# GILLISSEN KOTTER 1320









# GILLISSEN KOTTER 1320





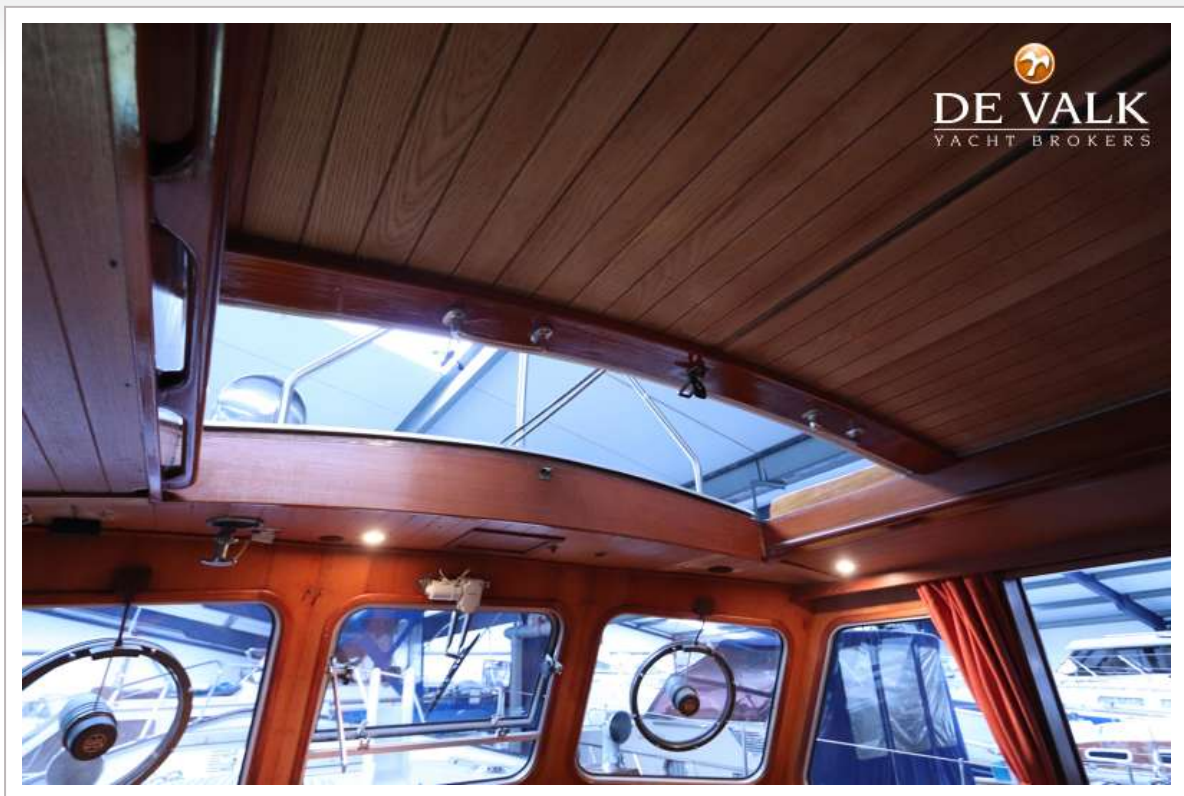
# GILLISSEN KOTTER 1320



# GILLISSEN KOTTER 1320







# GILLISSEN KOTTER 1320

