



DE VALK
YACHT BROKERS



GRAND SOLEIL 38



DE VALK
YACHT BROKERS

BROKER'S COMMENTS

The Grand Soleil 38 is a fast cruising yacht with excellent characteristics of safety, comfort and sailing performances. The interior is spacious and with a 3 cabin layout ideal for family and friend or a full crew. This Grand Soleil 38 is maintained very well with lots of renewings like engine + saildrive, navigation equipment, new interior floors, re-painting of the hull, and many more! She is located at our sales office in Sint Annaland ready to visit.

Joris van de Rijt

SPECIFICATIONS

Dimensions	11.89 x 3.74 x 2.10 (m)	Builder	Cantieri del Pardo
Built	1992	Cabins	3
Material	GRP	Berths	7
Engine(s)	1 x Volvo Penta D1-30 diesel	Hp/Kw	27.00 (hp), 19.87 (kw)
Asking price	sold (VAT)	Lying	at sales office

CONTACT

Sales office	De Valk Sint Annaland B.V.	Telephone	+31 (0)166 601 000
Address	Koelhuisweg 4 4697 RM Sint Annaland NL	E-mail	sintannaland@devalk.nl

DISCLAIMER

These particulars are given in good faith as supplied but cannot be guaranteed.



GENERAL

Model	GRAND SOLEIL 38
Type	sailing yacht
LOA (m)	11,89
Beam (m)	3,74
Draft (m)	2,10
Headroom (m)	1,90
Year built	1992
Builder	Cantiere del Pardo
Country	Italy
Designer	Finot/Conq Associates
Displacement (t)	6,8
Ballast (tonnes)	cast iron 2,4
CE norm	NA
Hull material	GRP
Hull colour	Ocean blue (professionally painted 2022)
Hull shape	round-bilged
Keel type	fin keel with bulb
Superstructure material	GRP
Rubbing strake	aluminum
Deck material	GRP
Deck finish	teak
Superstructure deck finish	teak
Cockpit deck finish	teak
Window frame	aluminium
Window material	perspex
Deckhatch	2 x big. 1 x small
Fuel tank (litre)	stainless steel 115
Level indicator (fuel tank)	yes
Freshwater tank (litre)	polyethylene 230 in two tanks
Level indicator (freshwater)	For both tanks



Blackwater tank (litre)	polyethylene (placed in 2009)
Blackwater tank extraction	deck extraction + uw line
Wheel steering	cable steering
Emergency tiller	yes
More info on hull	Old antifouling removed and new primer 2020
More info on paintwork	Hull and striping professionally painted 2022

ACCOMMODATION

Cabins	3
Berths	7
Interior	Classic warm
Floor	teak and holly (all floor panels new 2024)
Saloon	yes
Headroom saloon (m)	1,90
Heating	diesel ducted hot air Eberspächer
Chart table	yes
Aft Cabin	2 x
Dinette	yes
Galley	yes
Countertop	wood
Sink	stainless steel
Cooker	calor gas Eno 2 burner
Oven	yes
Fridge	Frigoboat toploader
Hot water system	220V + engine Quick (new 2020)
Water pressure system	electrical
Owners cabin	v-bed With Flexima mattresses (new 2021)
Bed length (m)	1,95
Wardrobe	shelves
Bathroom	shared
Toilet	shared



Toilet system	manual Jabsco (pump, hoses, valves replaced in 2023)
Wash basin	in the bathroom
Shower	shared
Guest cabin 1	double bed Starboard side (new mattresses 2016)
Bed length (m)	1,85 x 1,10
Wardrobe	hanging and shelves
Guest cabin 2	double bed Port side (new mattresses 2016)
Bed length (m)	1,85 x 1,50
Wardrobe	hanging and shelves
Extra info	Upholstery saloon and mattresses guest cabins new 2016

MACHINERY

No of engines	1
Make	Volvo Penta
Type	D1-30
HP	27
kW	19.87
Fuel	diesel
Year installed	2023
Engine hours	179
Engine cooling system	freshwater heat exchanger
Drive	sail-drive
Saildrive seal	2023 together with new engine + new saildrive
Engine controls	bowden cable (spare cables on board)
Propeller type	folding Volvo Penta (2023)
Propeller blades	3
Manual bilge pump	yes
Electric bilge pump	yes
Electrical installation	12V / 220V
Batteries	3 x 110Ah AGM (2020)
Battery monitor	Volt / Amp monitor



Battery charger	Victron blue smart 12/30 (2018)
Shorepower	with cable
Extra info	Volvo Penta engine + saildrive new 2023

NAVIGATION

Compass	Plastimo Olympic 135 (2019)
Depth sounder	Raymarine
Log	Raymarine
Windset	Raymarine
VHF	Raymarine RAY52 (2018)
Autopilot	Raymarine EV200 + linear drive tiller below deck (2019)
Rudder angle indicator	On autopilot
Plotter	Raymarine hybrid touch
Electronic chart(s)	yes
AIS transceiver	Raymarine AIS700 Class B transceiver (2018)
Navigation lights	yes
Extra info	LED toplight new 2020
Extra info	Stainless steel navigation console at helm new 2016

EQUIPMENT

Cockpit table	yes
Bathing platform	Foldable
Boarding ladder	stainless steel Removable
Deck shower	Hot + cold on swimming platform
Anchor	CQR Plough
Anchor chain	yes
Windlass	electrical Lofrans
Sea railing	stainless steel
Grab rail (superstructure)	teak
Pushpit	yes
Pulpit	yes



Fenders	yes
Mooring lines	yes
Radio	Fusion RA70 connected to raymarine network
Cockpit speakers	yes
Speakers in salon	yes
Fire extinguisher	yes
Extra info	Steering wheel cover new 2021

RIGGING

Rigging	sloop
Standing rigging	wire (2016)
Brand mast	Sparcraft
Material mast	aluminium
Spreaders	2 sets
Keel stepped mast	yes
Mainsail cover	Creek sails (2020)
Fully battened mainsail	Elvström EPEX (new 2016)
High aspect	North Sails (2008)
Genoa	Elvström EPEX (2016)
Genoa furler	Furlex 300S (2008)
Genoa cover	Creek sails (2020)
Gennaker	With squeezer
Removable innerforestay	yes
Reefing System	slabreefing
Backstay adjuster	mechanical
Boomvang	gasspring Sparcraft (2020)
Genoa sheetwinches	2 x Lewmar 52ST
Halyard winches	2 x Lewmar 43ST
Spi-pole	aluminium



GRAND SOLEIL 38





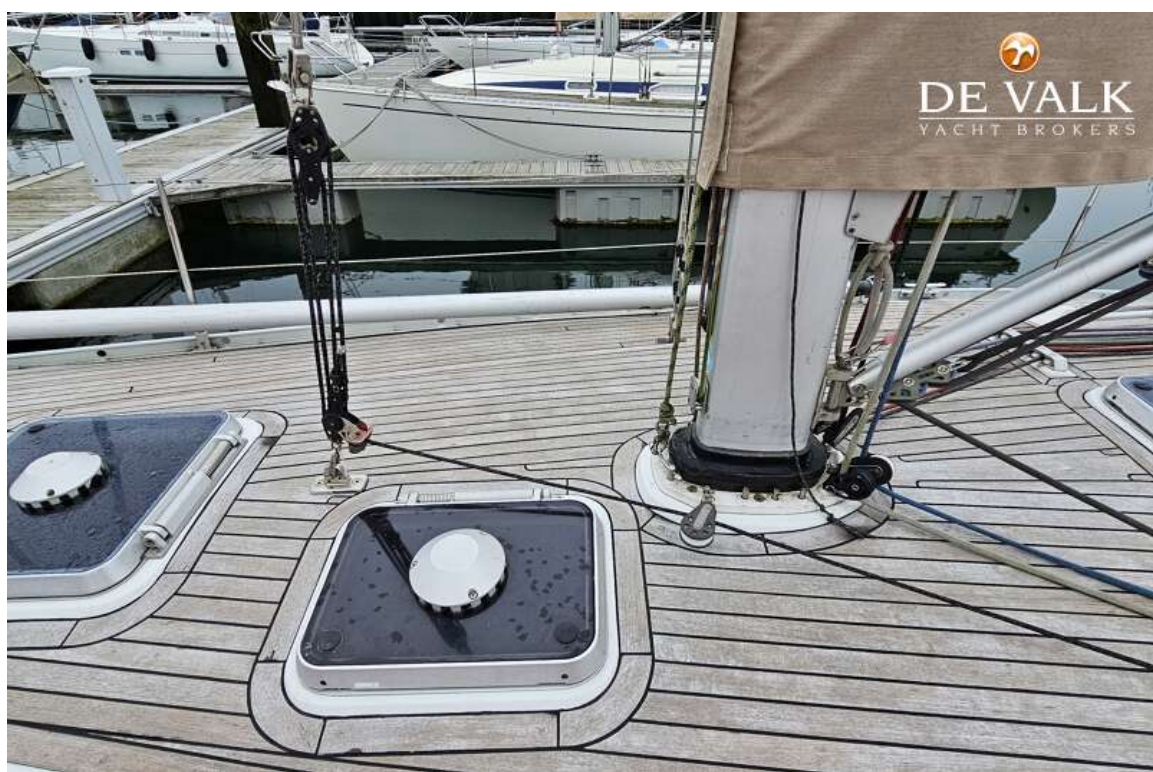
GRAND SOLEIL 38



GRAND SOLEIL 38



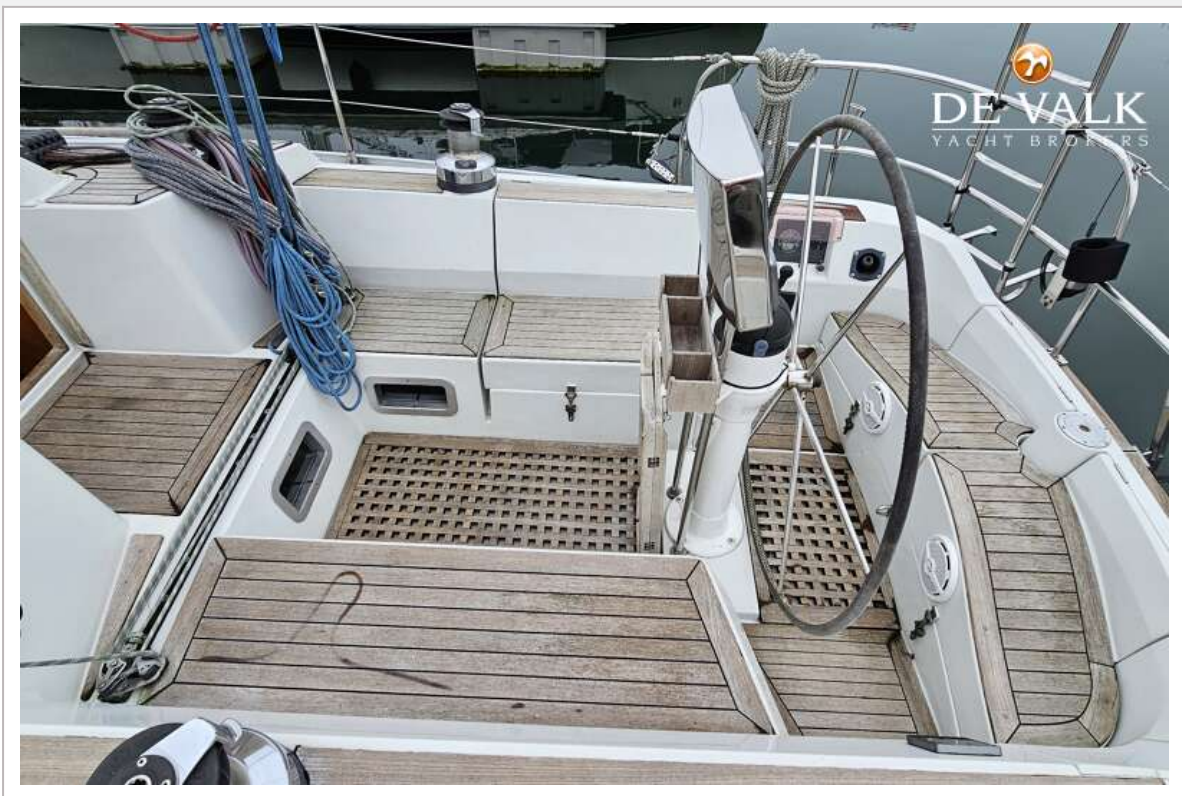
GRAND SOLEIL 38



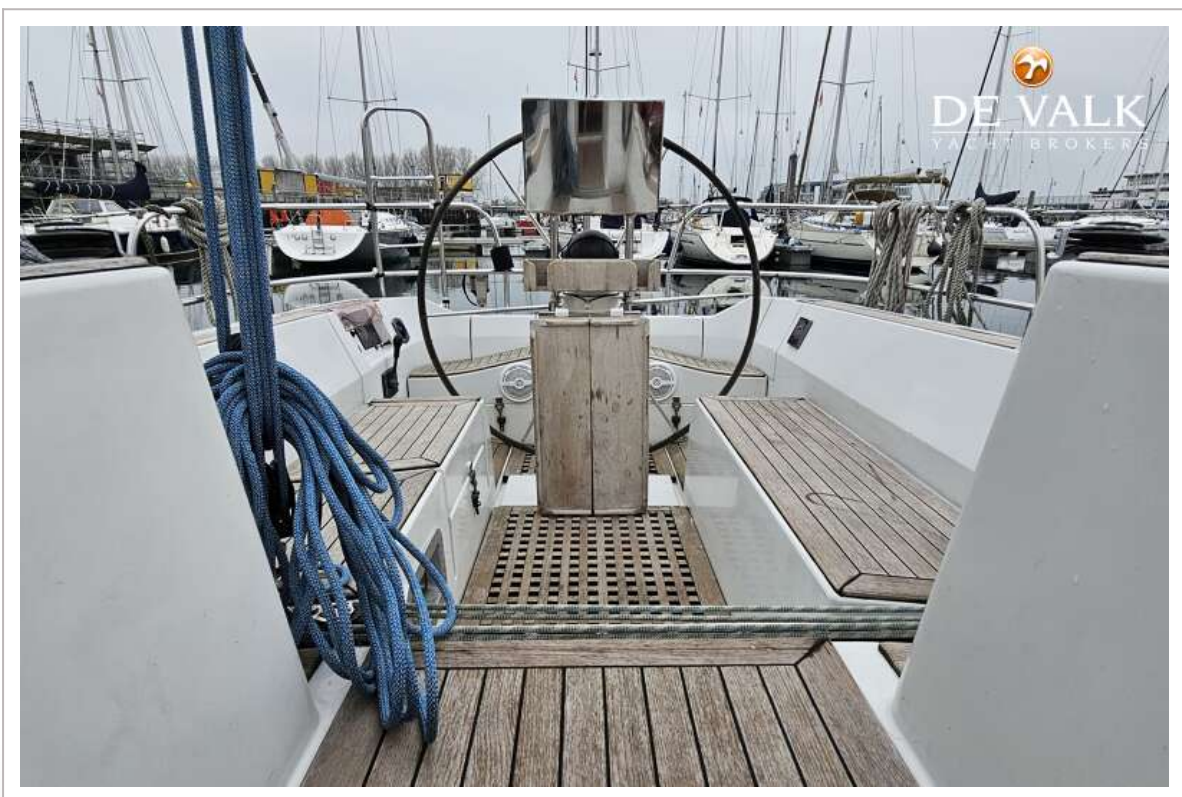
GRAND SOLEIL 38



GRAND SOLEIL 38



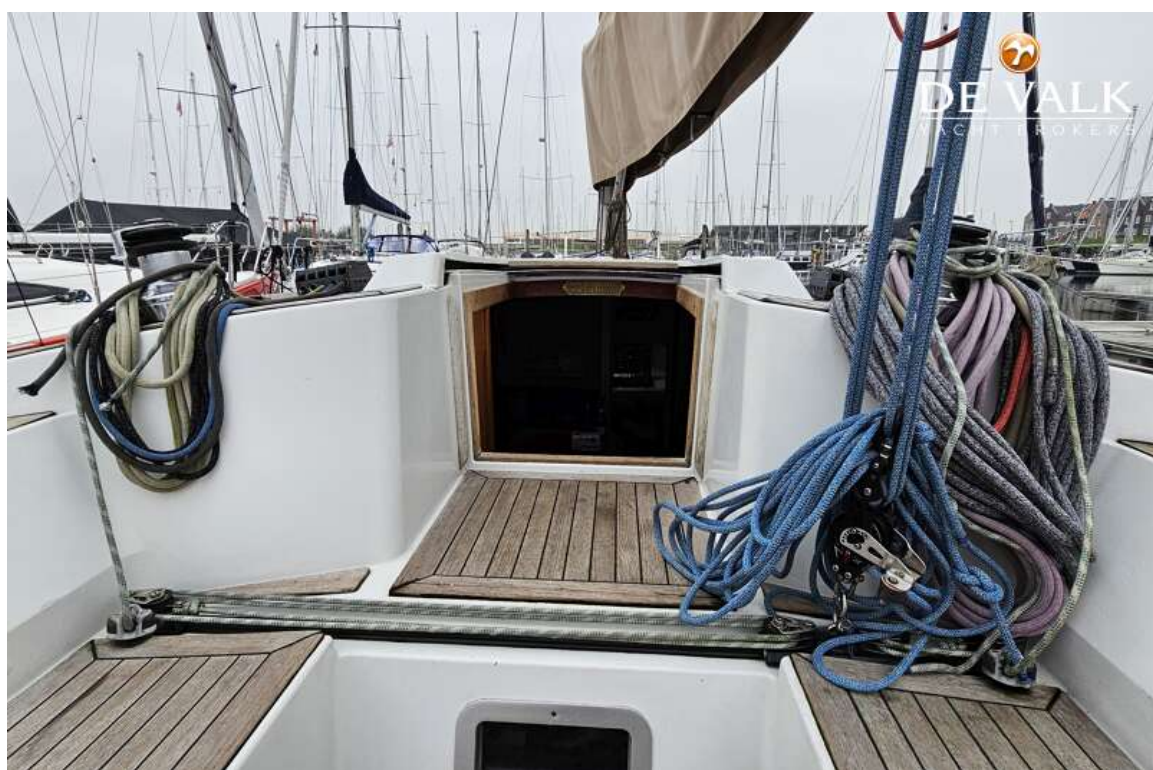
GRAND SOLEIL 38



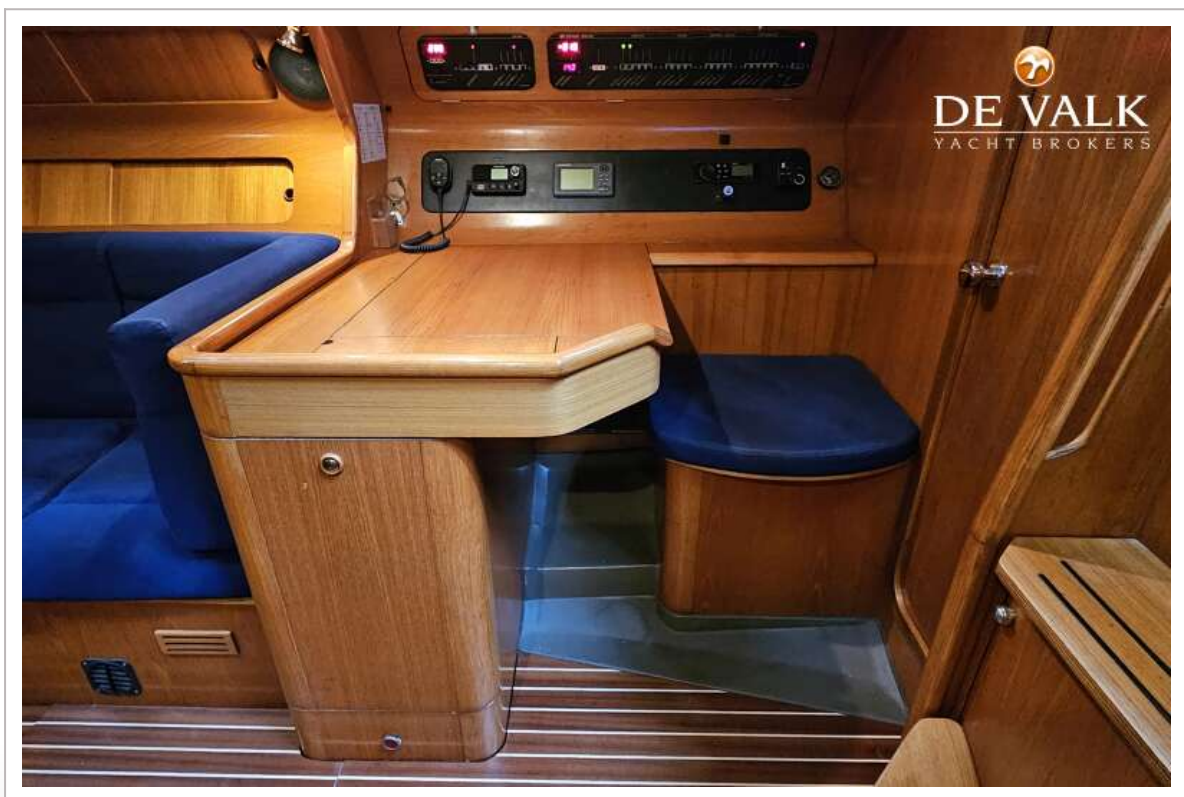
GRAND SOLEIL 38



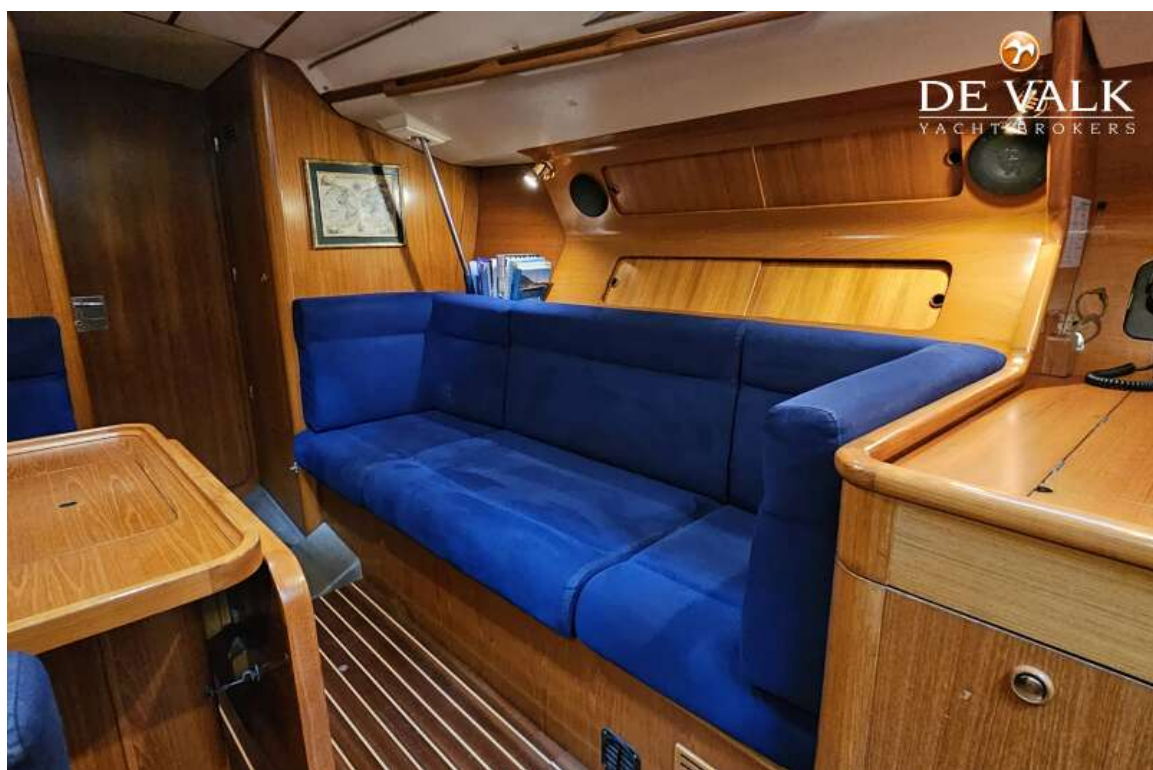
GRAND SOLEIL 38



GRAND SOLEIL 38



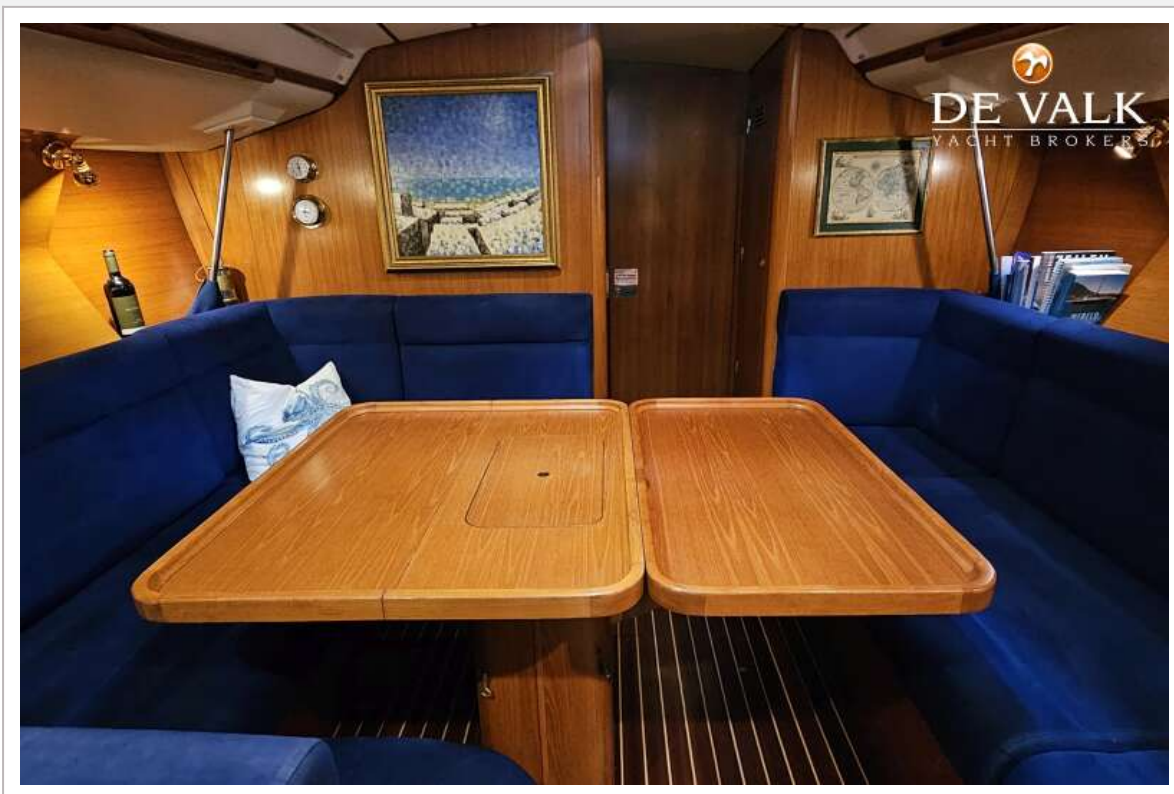
GRAND SOLEIL 38



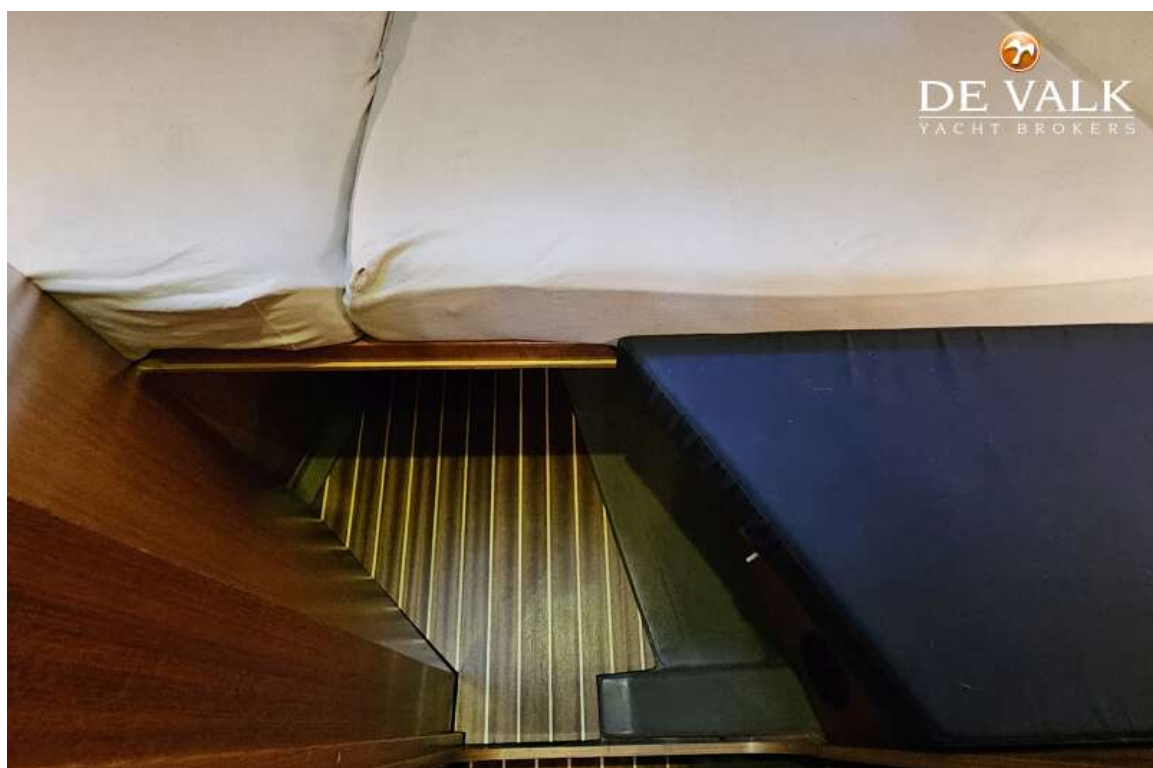
GRAND SOLEIL 38



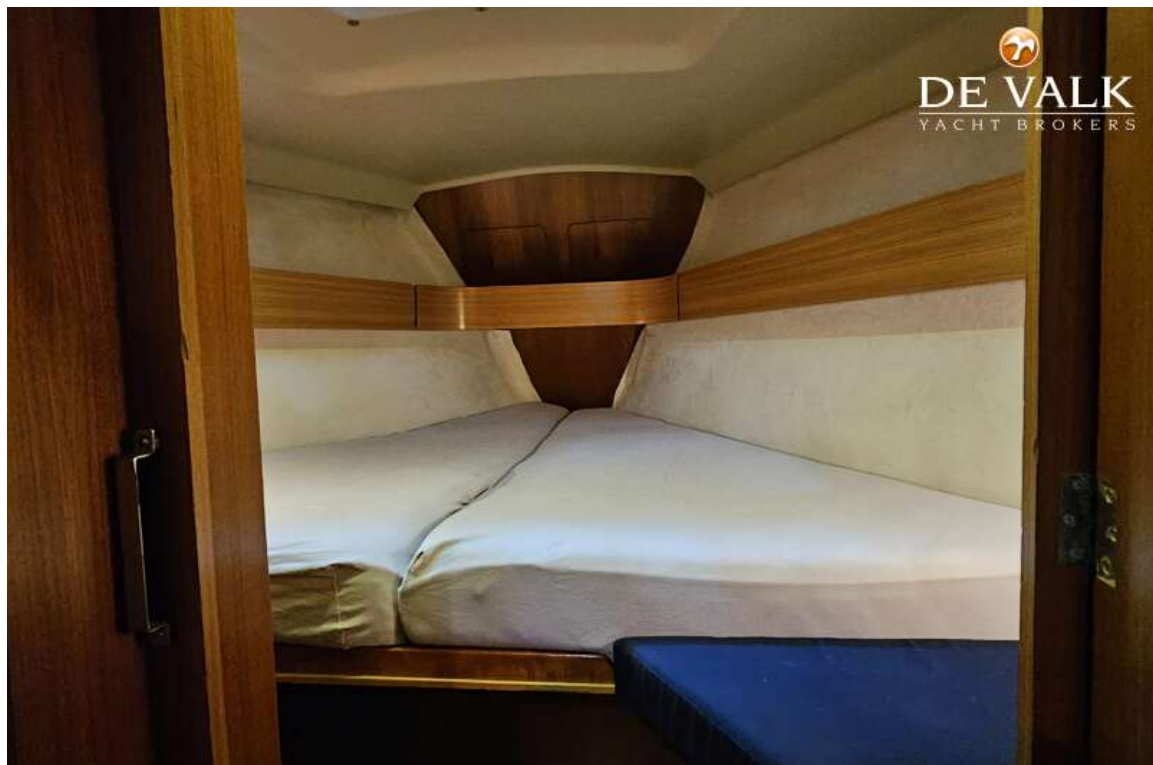
GRAND SOLEIL 38



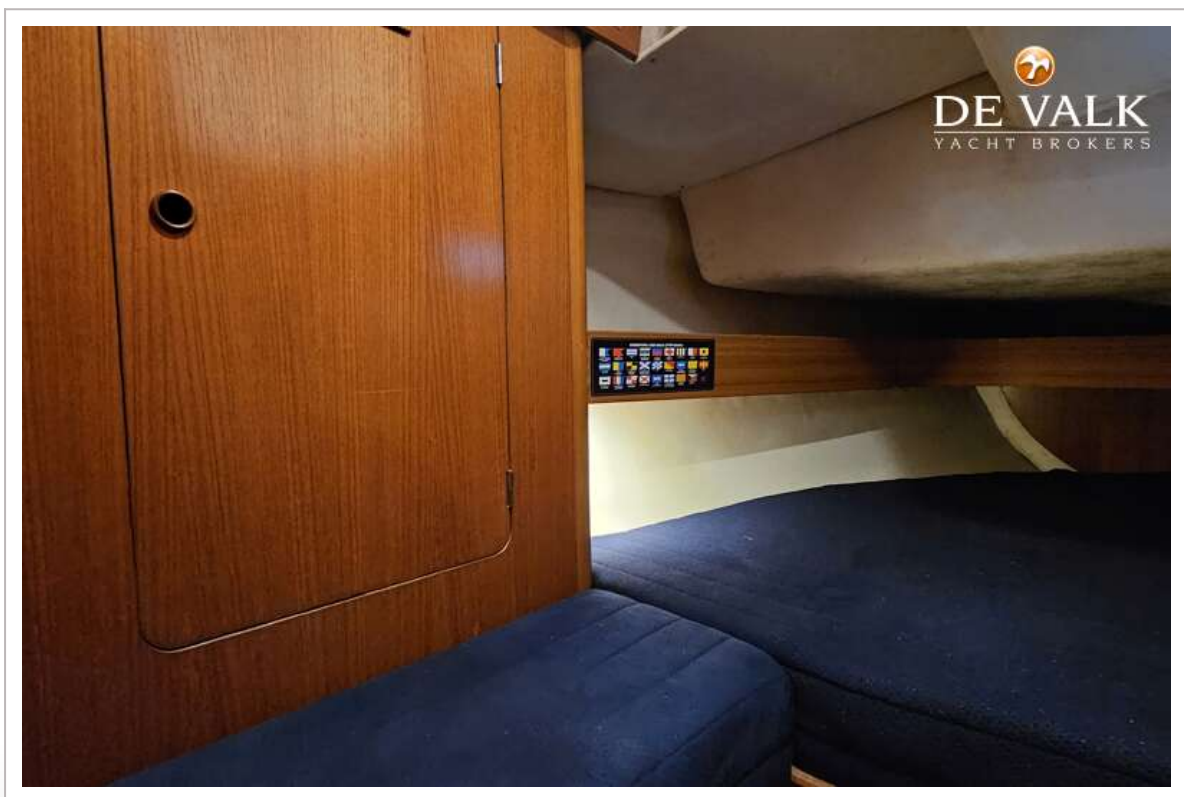
GRAND SOLEIL 38



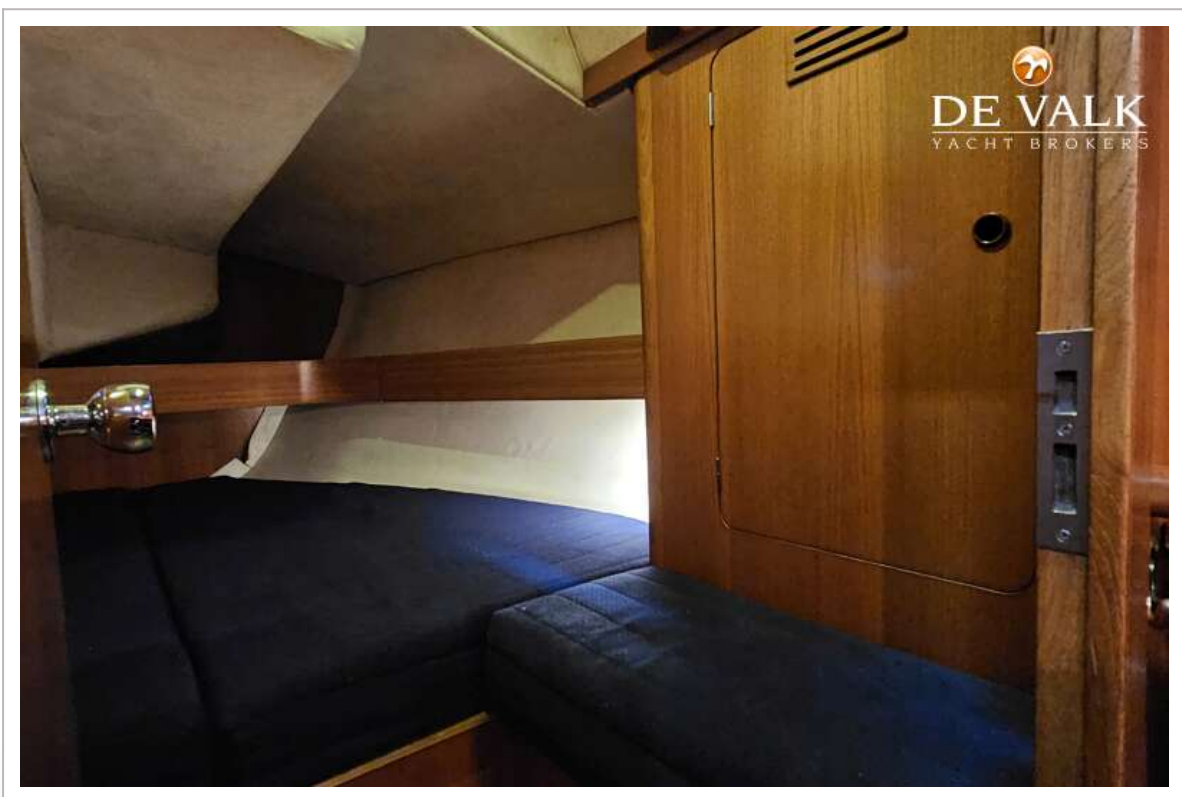
GRAND SOLEIL 38



GRAND SOLEIL 38



GRAND SOLEIL 38



GRAND SOLEIL 38

