



DE VALK  
YACHT BROKERS



BAVARIA 44-3



DE VALK  
YACHT BROKERS

BROKERAGE | CHARTER | BERTHS | FINANCE | INSURANCE | YACHT MANAGEMENT

## BROKER'S COMMENTS

This well maintained 3-cabin Bavaria 44-3 is a perfect family cruiser. She is very spacious and accommodates 8 people on board with a convertible dinette. With a new saildrive seal and antifouling she is ready to go, so you can enjoy her this season! Contact us now for an appointment on board in Zeeland and experience yourself in what a good condition the current (and first) owner has kept the yacht in.

*Joris van de Rijt*

## SPECIFICATIONS

<b>Dimensions</b>	13.95 x 4.25 x 1.65 (m)	<b>Builder</b>	Bavaria Yachtbau GmbH.
<b>Built</b>	2003	<b>Cabins</b>	3
<b>Material</b>	GRP	<b>Berths</b>	8
<b>Engine(s)</b>	1 x Volvo Penta D2-55 diesel	<b>Hp/Kw</b>	55.00 (hp), 40.48 (kw)
<b>Asking price</b>	sold (VAT )	<b>Lying</b>	elsewhere / Not at sales office

## CONTACT

<b>Sales office</b>	De Valk Sint Annaland B.V.	<b>Telephone</b>	+31 (0)166 601 000
<b>Address</b>	Koelhuisweg 4 4697 RM Sint Annaland NL	<b>E-mail</b>	sintannaland@devalk.nl

## DISCLAIMER

These particulars are given in good faith as supplied but cannot be guaranteed.



## GENERAL

Model	BAVARIA 44-3
Type	sailing yacht
LOA (m)	13,95
LWL (m)	11,45
Beam (m)	4,25
Draft (m)	1,65
Air draft (m)	19,00
Headroom (m)	1,93
Year built	2003
Builder	Bavaria Yachtbau GmbH.
Country	Germany
Designer	J&J Design
Displacement (t)	9,6
Ballast (tonnes)	cast iron 3
CE norm	A
Hull material	GRP
Hull colour	white
Hull shape	round-bilged
Keel type	fin keel
Superstructure material	GRP
Rubbing strake	stainless steel
Deck material	GRP
Deck finish	teak (original 12mm)
Superstructure deck finish	non-skid moulded in
Cockpit deck finish	teak (cockpit floor original 12mm)
Antifouling (year)	05-2022
Window frame	aluminium
Window material	perspex
Deckhatch	Lewmar
Portholes	Lewmar



Fuel tank (litre)	polyethylene 1 x 210
Level indicator (fuel tank)	yes
Freshwater tank (litre)	polyethylene 360 (in two tanks)
Level indicator (freshwater)	yes
Blackwater tank (litre)	polyethylene 1 x
Blackwater tank extraction	deck extraction + uw line
Wheel steering	cable steering 2 x stainless steel steering wheel
Emergency tiller	yes
Extra info	The inspection cap of the front watertank has a small leakage.

## ACCOMMODATION

Cabins	3
Berths	8
Interior	mahogany
Saloon	yes
Headroom saloon (m)	1,93
Heating	diesel ducted hot air Webasto
Chart table	yes
Aft Cabin	2 x
Dinette	yes
Dinette to convert into berth	With infill cushion
Galley	yes
Countertop	plastic Blue
Sink	stainless steel 2 x
Cooker	calor gas 2 x burner
Oven	yes
Fridge	Top loader
Hot water system	220V + engine Quick
Water pressure system	electrical
Owners cabin	v-bed
Bed length (m)	2,00 x 1,60



Wardrobe	hanging and shelves
Bathroom	en suite I
Toilet	en suite
Toilet system	yes
Wash basin	in the bathroom
Guest cabin 1	double bed
Bed length (m)	2,00 x 1,50
Wardrobe	hanging and shelves
Bathroom	shared
Toilet	shared
Toilet system	yes
Wash basin	in the bathroom
Shower	shared
Guest cabin 2	double bed
Bed length (m)	2,00 x 1,50
Wardrobe	hanging and shelves
Extra info	Original/standard saloon table legs are also available.

## MACHINERY

No of engines	1
Make	Volvo Penta
Type	D2-55
HP	55
kW	40.48
Fuel	diesel
Engine hours	733 (functioneert soms niet)
Engine cooling system	freshwater heat exchanger
Drive	sail-drive
Saildrive seal	New 05-2022
Engine controls	mechanical
Gearbox	mechanical



<b>Bowthruster</b>	electric Side Power
<b>Propeller type</b>	fixed
<b>Propeller blades</b>	3
<b>Manual bilge pump</b>	yes
<b>Electric bilge pump</b>	yes
<b>Electrical installation</b>	12V/220V
<b>Start battery</b>	1 x
<b>Service battery</b>	2 x 140 Ah
<b>Bowthruster battery</b>	2 x
<b>Battery charger</b>	Mastervolt
<b>Shorepower</b>	with cable
<b>Extra info</b>	Snelheidsmeter functioneert niet

## NAVIGATION

<b>Compass</b>	2 x
<b>Depth sounder/log</b>	Raymarine ST60 Tridata
<b>Windset</b>	Raymarine ST60
<b>VHF</b>	Shipmate RS 8300
<b>Autopilot</b>	Raymarine
<b>Radar/GPS/plotter</b>	Raymarine RL70C
<b>Navigation lights</b>	yes

## EQUIPMENT

<b>Sprayhood with grab rail</b>	Grey, middle window can be opened (New windows 2022)
<b>Cockpit cover</b>	Spacious grey cover with windows (detachable side/back panels)
<b>Bimini</b>	Blue
<b>Cockpit cushions</b>	Blue - leather
<b>Cockpit table</b>	yes
<b>Bathing platform</b>	Teak on bathing platform (original 12mm)
<b>Boarding ladder</b>	stainless steel
<b>Deck shower</b>	On bathing platform



Anchor	Stainless steel
Anchor chain	50 Meter
Windlass	electrical Lofrans Tigres
Capstan	On windlass
Outboard support	yes
Sea railing	wire
Grab rail (superstructure)	stainless steel
Railing side opening gates	2 x
Lifebuoy	Besto - white
Danbuoy	Seago Buoy
Radar reflector	yes
Fenders	yes
Mooring lines	yes
Radio-cd player	Alpine with Bluetooth
Speakers in salon	yes

## RIGGING

Rigging	sloop (2003)
Standing rigging	wire
Brand mast	Seldén
Material mast	aluminium
Spreaders	2 x
Mainsail	Elvstrom vertical battened (2003)
Stoway mast	yes
Genoa	Elvstrom (2003)
Genoa furler	Furlex 300S
Reefing System	main in-mast furling
Backstay adjuster	mechanical Hasselfors
Boomvang	gasspring Rodkicker
Genoa sheetwinches	2 x Harken 48 ST
Halyard winches	2 x Harken 40 ST













## BAVARIA 44-3





## BAVARIA 44-3



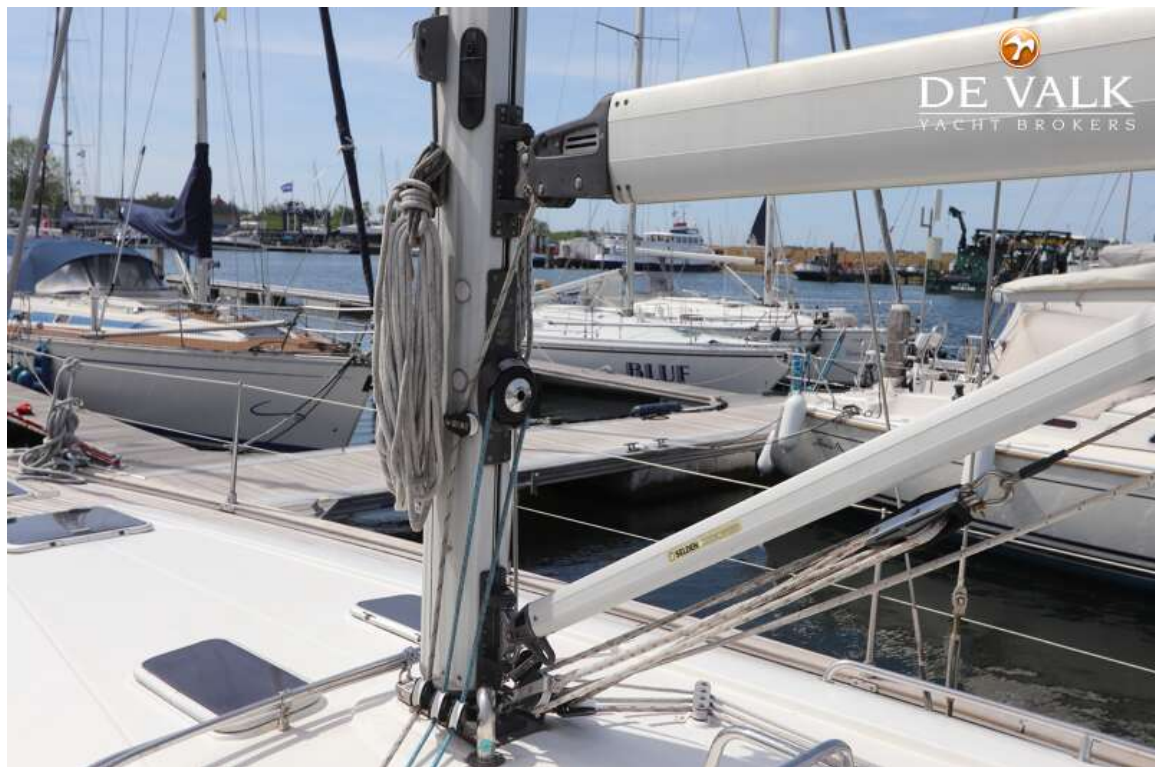
## BAVARIA 44-3





## BAVARIA 44-3



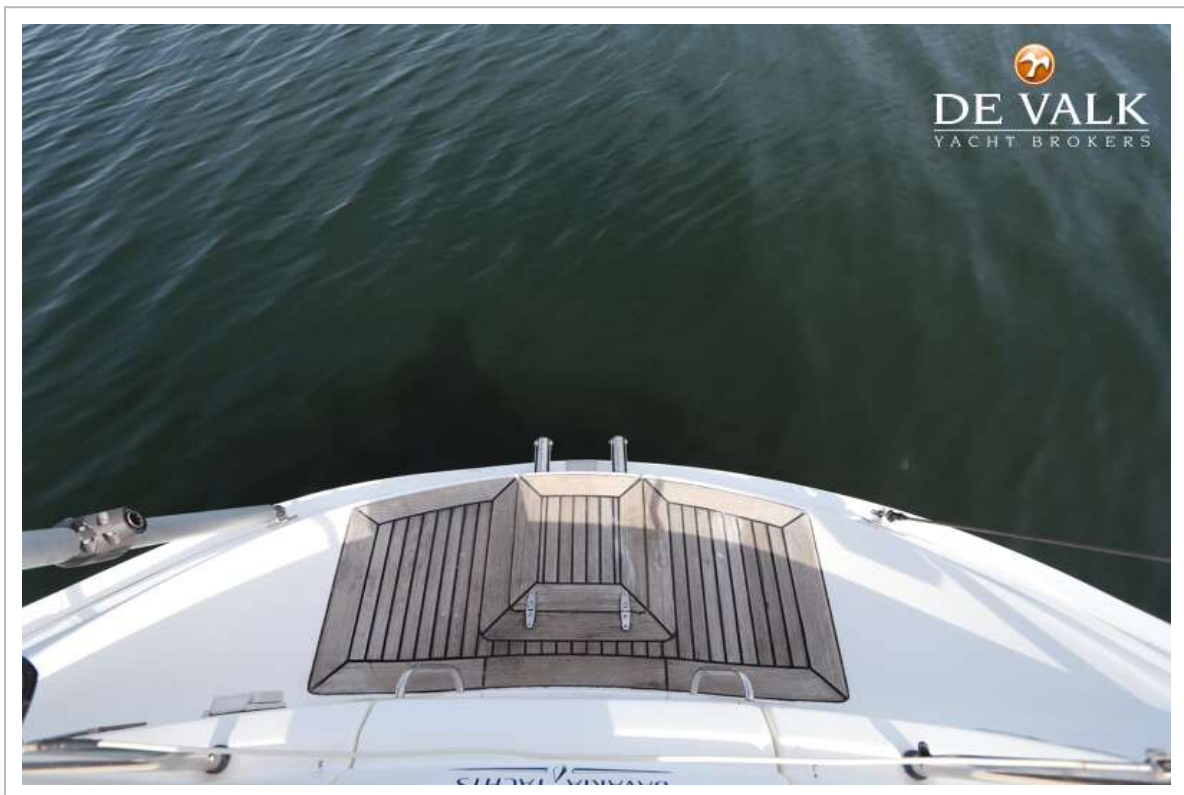
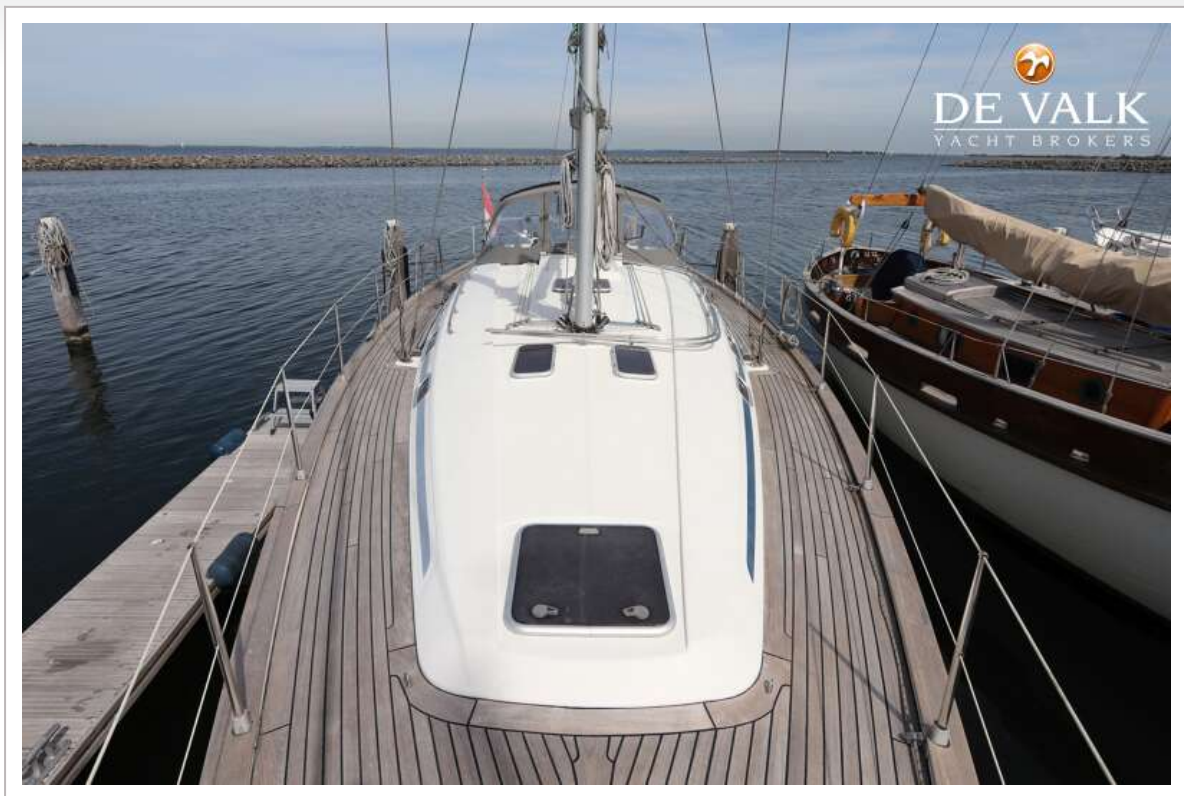








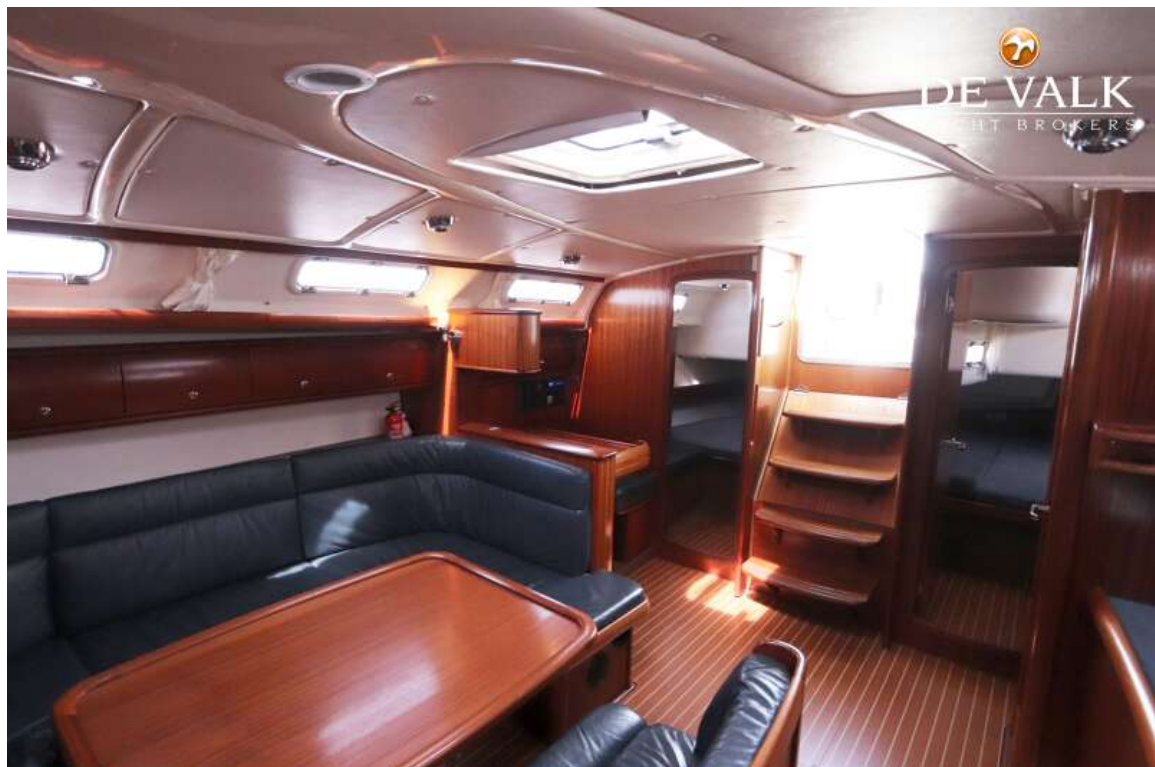
## BAVARIA 44-3







## BAVARIA 44-3

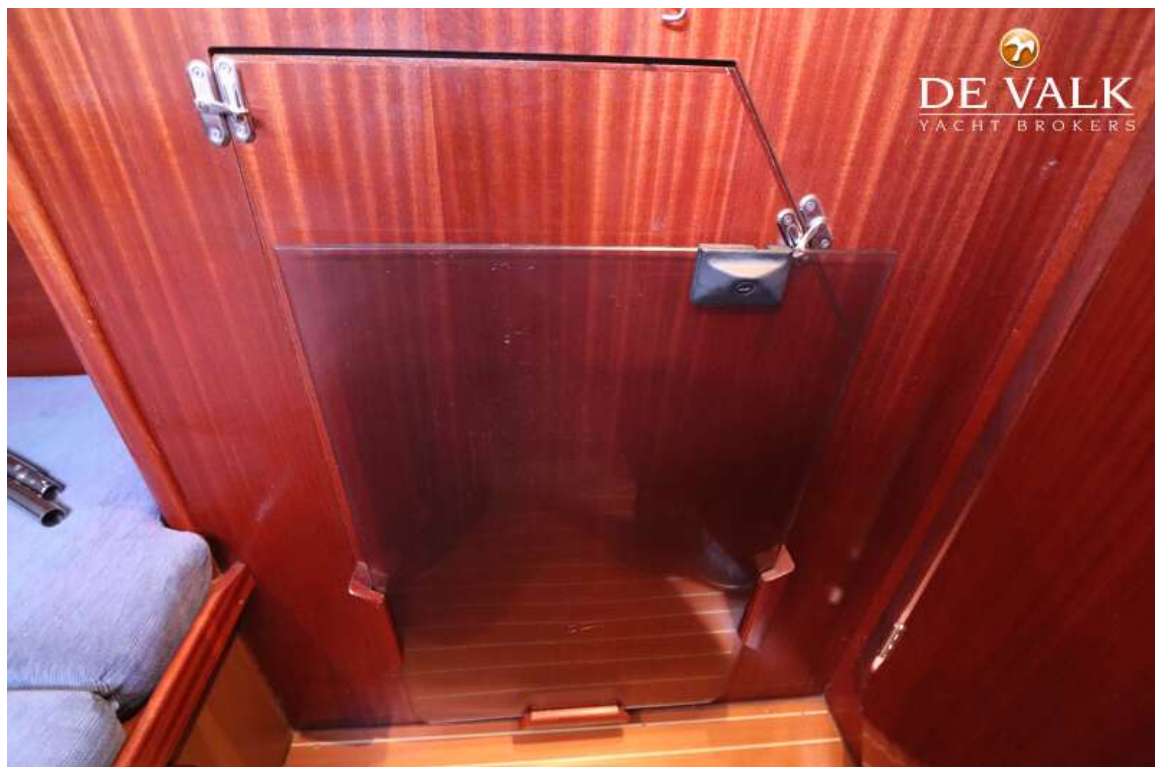
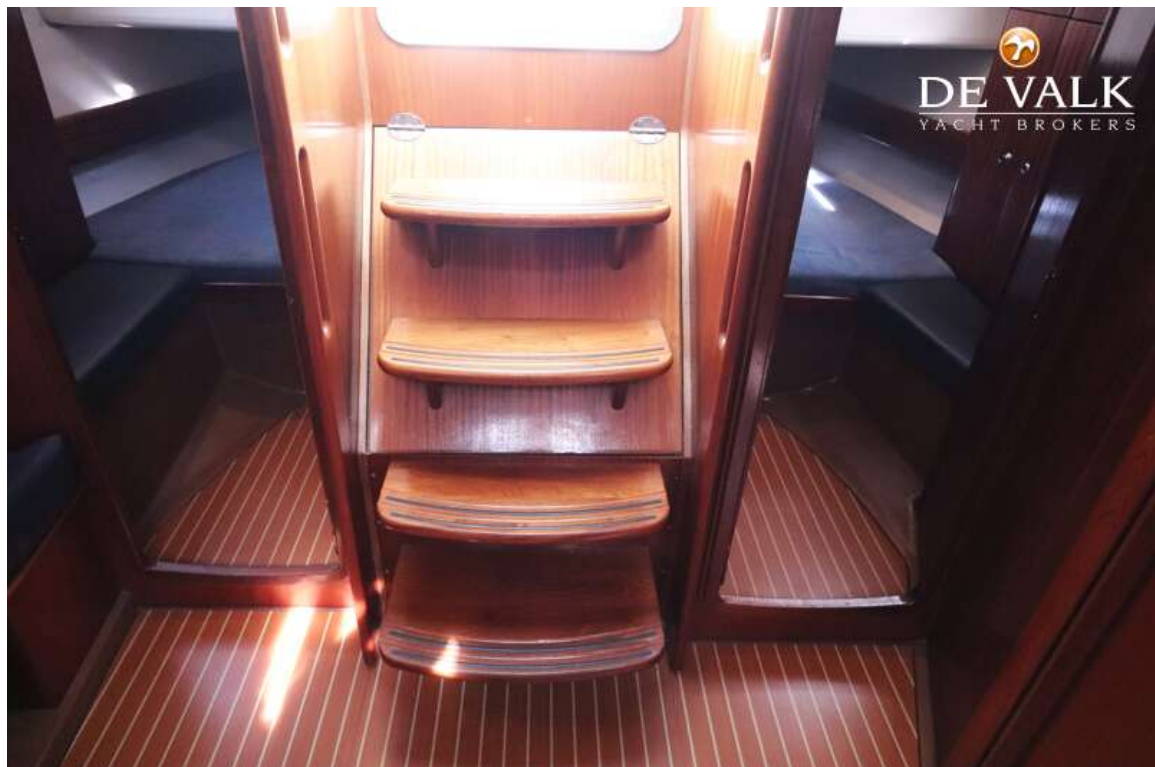


# BAVARIA 44-3





## BAVARIA 44-3

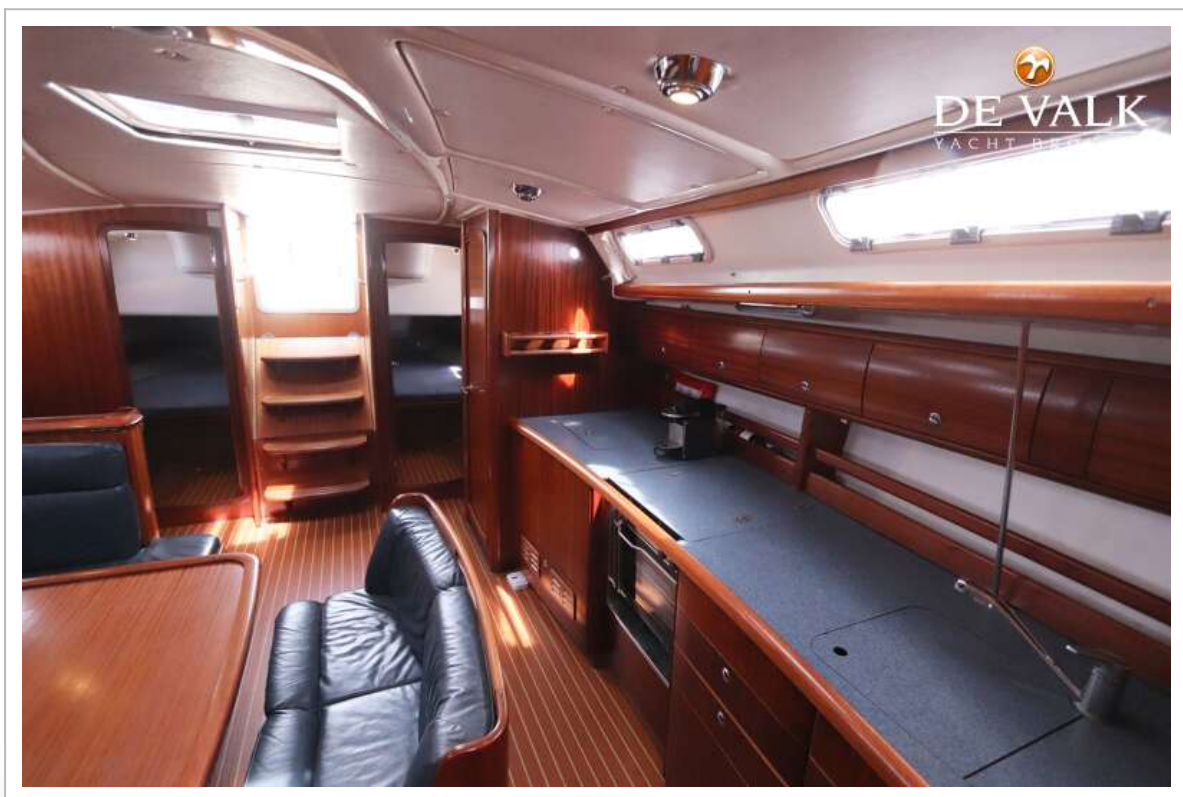


# BAVARIA 44-3





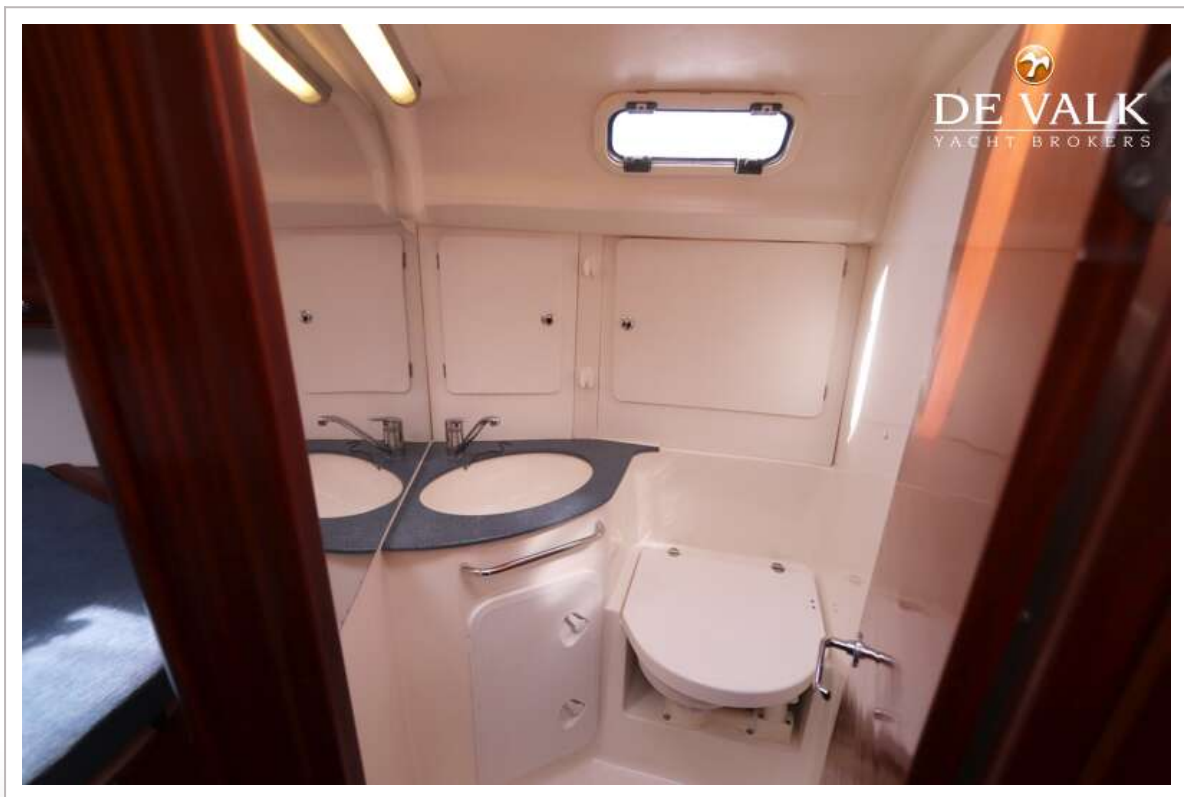
## BAVARIA 44-3



## BAVARIA 44-3

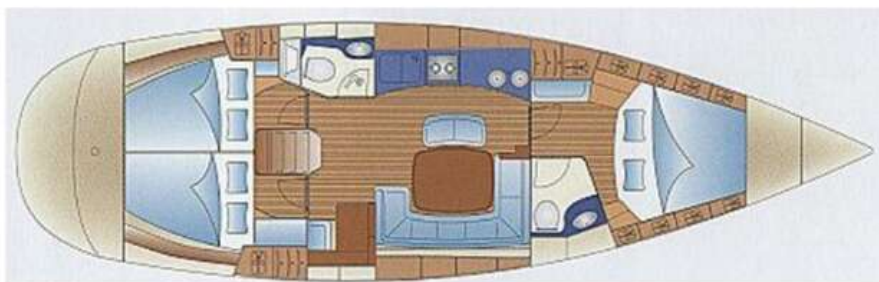






## BAVARIA 44-3







## BAVARIA 44-3

