



DE VALK  
YACHT BROKERS



## TULLIO ABBATE 52 EXCEPTION



DE VALK  
YACHT BROKERS

# TULLIO ABBATE 52 EXCEPTION

## BROKER'S COMMENTS

Release the speed demon in you with this exciting Tullio Abbate 52 Exception. Italian design with two powerful Baudoin diesel engines guarantee plenty of speed and many smiles on the water. This Tullio Abbate Exception 52 is also comfortably equipped with reversible air conditioning and strong generator, which also makes it possible to stay on board longer. The interior offers a spacious salon and galley with standing height, two bathrooms and a separate cabin. Are you looking for speed on the water? Then make an appointment to view this Tullio Abbate 52 Exception.

*Jochem Heijermans*

## SPECIFICATIONS

|                     |                            |                |                                 |
|---------------------|----------------------------|----------------|---------------------------------|
| <b>Dimensions</b>   | 15.00 x 4.22 x 0.50 (m)    | <b>Builder</b> | Tullio Abbate                   |
| <b>Built</b>        | 1994                       | <b>Cabins</b>  | 1                               |
| <b>Material</b>     | GRP                        | <b>Berths</b>  | 4                               |
| <b>Engine(s)</b>    | 2 x Baudoin VBT1600 diesel | <b>Hp/Kw</b>   | 2 x 600.00 (hp), 441.00 (kw)    |
| <b>Asking price</b> | sold (VAT )                | <b>Lying</b>   | elsewhere / Not at sales office |

## CONTACT

|                     |                          |                  |                   |
|---------------------|--------------------------|------------------|-------------------|
| <b>Sales office</b> | De Valk Belgium          | <b>Telephone</b> | +32 586 80 218    |
| <b>Address</b>      | 1401 PT Nieuwpoort<br>BE | <b>E-mail</b>    | belgium@devalk.nl |

## DISCLAIMER

These particulars are given in good faith as supplied but cannot be guaranteed.



# TULLIO ABBATE 52 EXCEPTION

## GENERAL

|                              |                            |
|------------------------------|----------------------------|
| Model                        | TULLIO ABBATE 52 EXCEPTION |
| Type                         | motor yacht                |
| LOA (m)                      | 15,00                      |
| Beam (m)                     | 4,22                       |
| Draft (m)                    | 0,50                       |
| Headroom (m)                 | 2,00                       |
| Year built                   | 1994                       |
| Builder                      | Tullio Abbate              |
| Country                      | Italy                      |
| Displacement (t)             | 17                         |
| CE norm                      | NA                         |
| Hull material                | GRP                        |
| Hull colour                  | white                      |
| Hull shape                   | deep-V                     |
| Superstructure material      | GRP                        |
| Rubbing strake               | rubber                     |
| Deck material                | GRP                        |
| Deck finish                  | paint                      |
| Superstructure deck finish   | paint                      |
| Cockpit deck finish          | paint                      |
| Antifouling (year)           | 2019                       |
| Window frame                 | aluminium                  |
| Window material              | tempered glass             |
| Deckhatch                    | 2x                         |
| Portholes                    | aluminium                  |
| Fuel tank (litre)            | aluminium 1000             |
| Fuel tank 2 (litre)          | aluminium 1000             |
| Level indicator (fuel tank)  | yes                        |
| Freshwater tank (litre)      | stainless steel 500        |
| Level indicator (freshwater) | yes                        |



# TULLIO ABBATE 52 EXCEPTION

|                |           |
|----------------|-----------|
| Wheel steering | hydraulic |
|----------------|-----------|

## ACCOMMODATION

|                       |                     |
|-----------------------|---------------------|
| Cabins                | 1                   |
| Berths                | 4                   |
| Crew cabin            | yes                 |
| Floor                 | carpet              |
| Saloon                | yes                 |
| Headroom saloon (m)   | 2                   |
| Air-conditioning      | reverse cycle airco |
| Galley                | yes                 |
| Countertop            | plastic             |
| Sink                  | stainless steel 2x  |
| Cooker                | electric 2 burner   |
| Microwave             | yes                 |
| Fridge                | yes                 |
| Hot water system      | 220V + engine       |
| Water pressure system | electrical          |
| Owners cabin          | twin single         |
| Wardrobe              | hanging             |
| Wet bar               | yes                 |

## MACHINERY

|                    |         |
|--------------------|---------|
| No of engines      | 2       |
| Make               | Baudoin |
| Type               | VBTL600 |
| HP                 | 600     |
| kW                 | 441     |
| Fuel               | diesel  |
| Year installed     | 1994    |
| Maximum speed (kn) | 40 kn   |



# TULLIO ABBATE 52 EXCEPTION

|                          |                              |
|--------------------------|------------------------------|
| Cruising speed (kn)      | 30                           |
| Engine hours             | 560                          |
| Engine cooling system    | freshwater heat exchanger    |
| Drive                    | shaft                        |
| Engine controls          | bowden cable                 |
| Gearbox                  | hydraulic                    |
| Exhaust                  | watercooled                  |
| Thrust bearing           | yes                          |
| Propeller type           | fixed                        |
| Propeller blades         | 4                            |
| Propeller shaft material | stainless steel              |
| Shaft lubrication        | water                        |
| Electric bilge pump      | yes                          |
| Electrical installation  | 12V/220V                     |
| Generator                | silent separator Onan 7.5Kva |
| Batteries                | 5                            |
| Start battery            | 2021                         |
| Service battery          | 2021                         |
| Battery monitor          | yes                          |
| Battery charger          | 2x Lettronautica 12V/40Ah    |
| Shorepower               |                              |
| Trimtabs                 | yes                          |

## NAVIGATION

|                        |         |
|------------------------|---------|
| Compass                | yes     |
| Electric compass       | Navmann |
| Rudder angle indicator | yes     |
| Plotter/GPS            | Navmann |
| Navigation lights      | yes     |
| Searchlight            | yes     |



## EQUIPMENT

|                            |                 |
|----------------------------|-----------------|
| Sea railing                | stainless steel |
| Grab rail (superstructure) | stainless steel |
| Pushpit                    | yes             |
| Pulpit                     | yes             |
| Lifejackets                | yes             |
| Horn                       | electric        |
| Fenders                    | yes             |
| Mooring lines              | yes             |
| Radio                      | yes             |
| Cockpit speakers           | yes             |
| Speakers in salon          | yes             |
| Clock - barometer          | yes             |





# TULLIO ABBATE 52 EXCEPTION



# TULLIO ABBATE 52 EXCEPTION





# TULLIO ABBATE 52 EXCEPTION



# TULLIO ABBATE 52 EXCEPTION





# TULLIO ABBATE 52 EXCEPTION



# TULLIO ABBATE 52 EXCEPTION





# TULLIO ABBATE 52 EXCEPTION



# TULLIO ABBATE 52 EXCEPTION







# TULLIO ABBATE 52 EXCEPTION

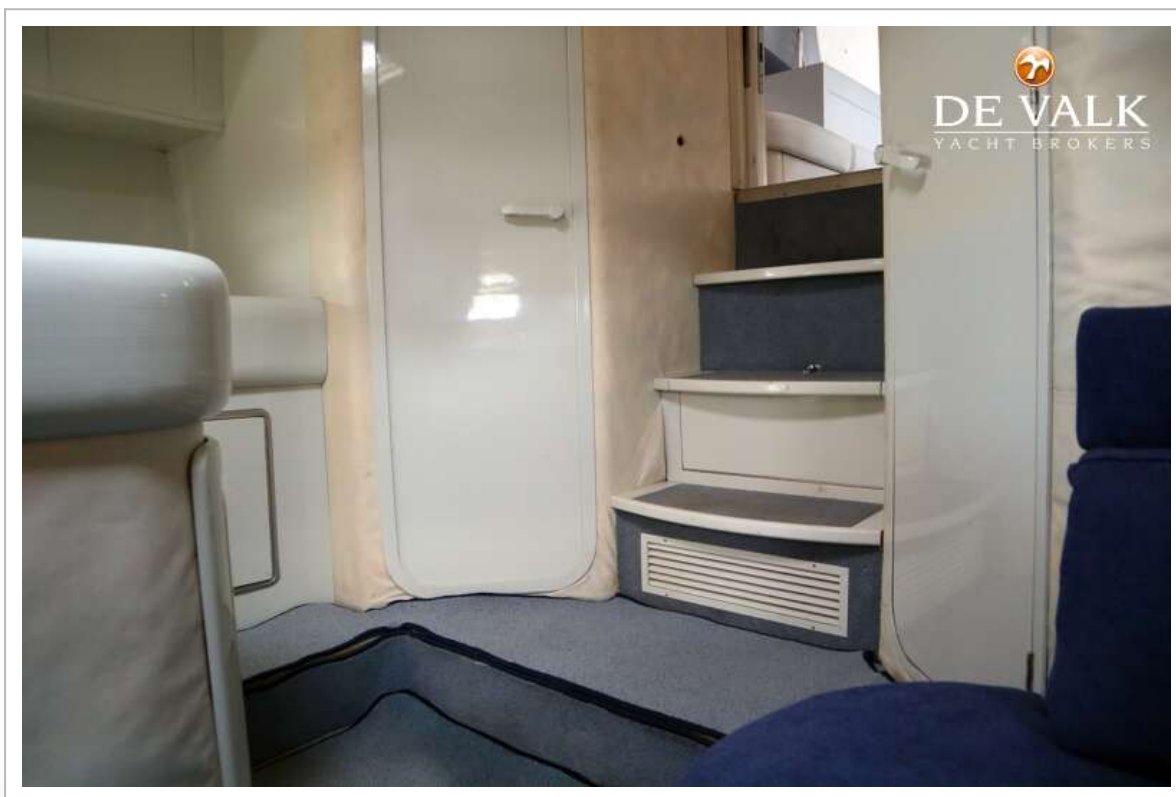




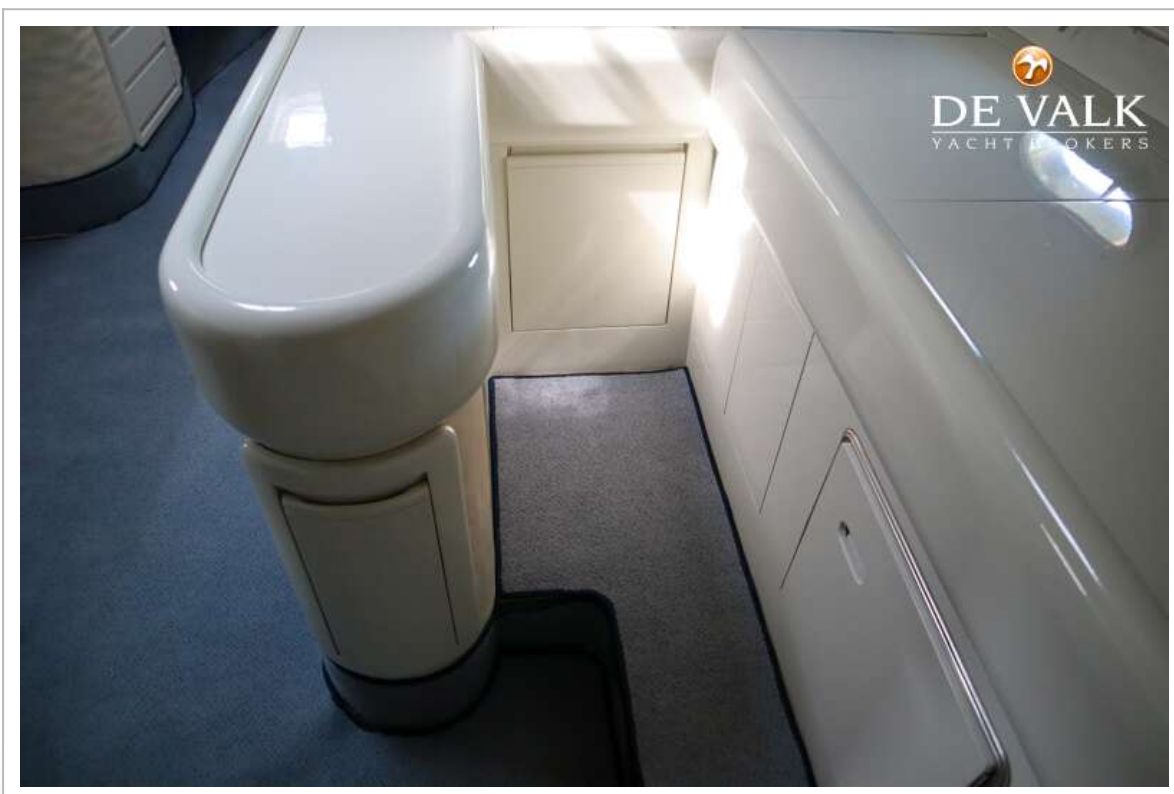
# TULLIO ABBATE 52 EXCEPTION



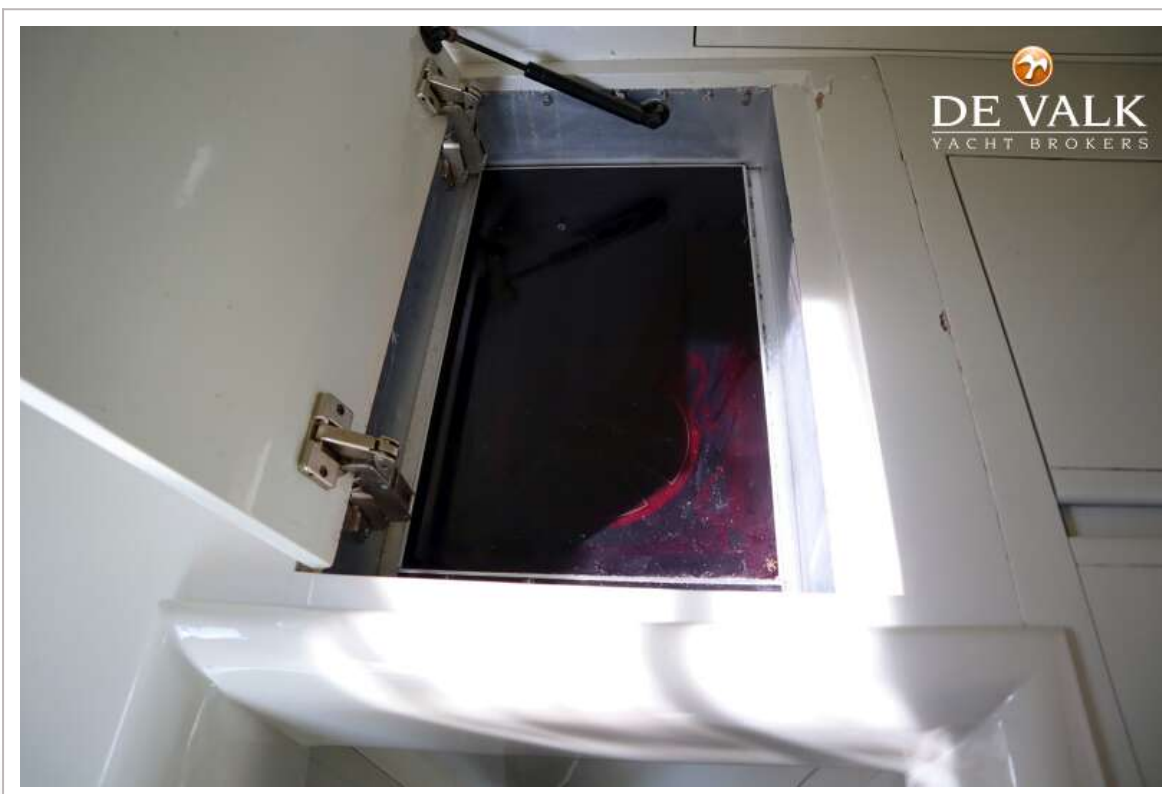
# TULLIO ABBATE 52 EXCEPTION



## TULLIO ABBATE 52 EXCEPTION



## TULLIO ABBATE 52 EXCEPTION





# TULLIO ABBATE 52 EXCEPTION



## TULLIO ABBATE 52 EXCEPTION



## TULLIO ABBATE 52 EXCEPTION

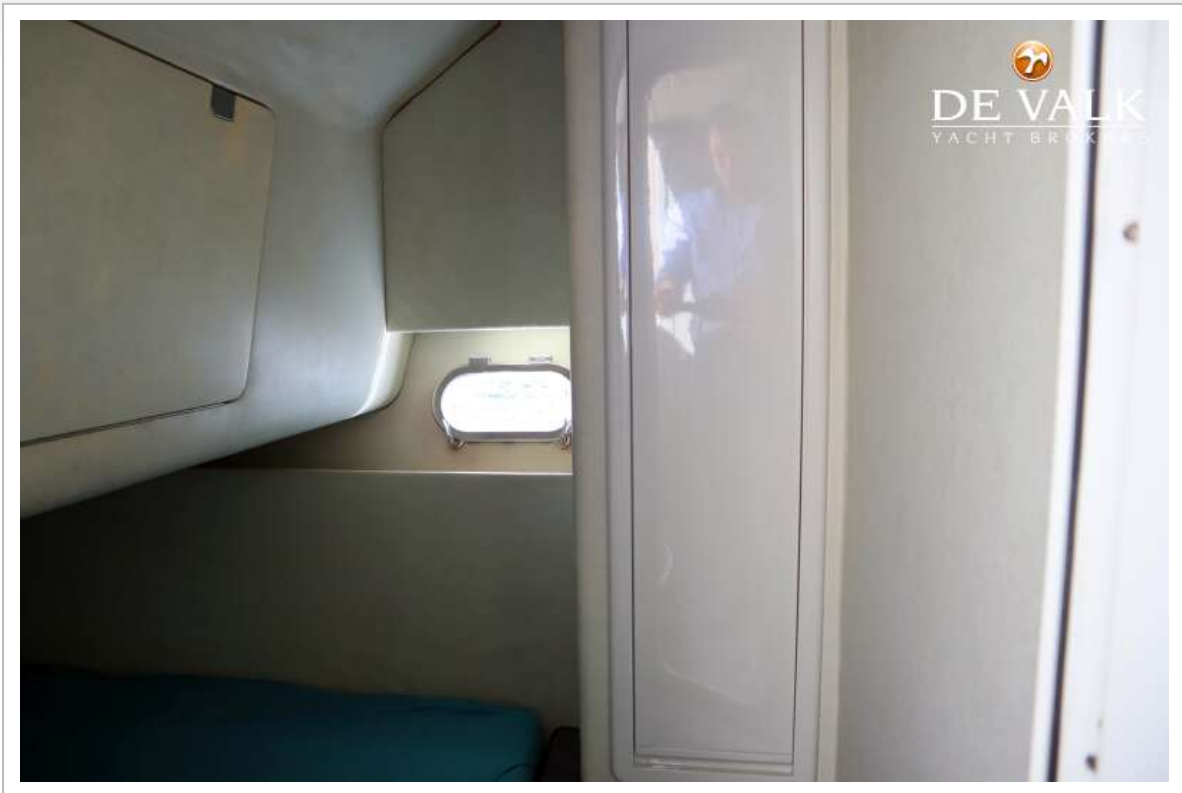


## TULLIO ABBATE 52 EXCEPTION





# TULLIO ABBATE 52 EXCEPTION



# TULLIO ABBATE 52 EXCEPTION

