



DE VALK  
YACHT BROKERS



## MAC 40 OFFSHORE CATAMARAN



DE VALK  
YACHT BROKERS

# MAC 40 OFFSHORE CATAMARAN

## BROKER'S COMMENTS

Uniquely built Mac 40 Offshore Catamaran, an Offshore Catamaran that automatically puts a smile on your face. The ship is equipped with two exceptional Seatek 6-4v-9 600hp diesel engines with Bouwman indirect heat exchanger. This gives these engines optimum cooling, which is important for optimum performance. This unique Mac 40 Offshore Catamaran can be visited by appointment.

*Jochem Heijermans*

## SPECIFICATIONS

<b>Dimensions</b>	12.20 x 3.25 x 0.80 (m)	<b>Builder</b>	
<b>Built</b>	1991	<b>Cabins</b>	1
<b>Material</b>	Aluminium	<b>Berths</b>	1
<b>Engine(s)</b>	2 x Seatek 6-4v-9 diesel	<b>Hp/Kw</b>	2 x 600.00 (hp), 441.00 (kw)
<b>Asking price</b>	€ 79.500 (VAT Paid)	<b>Lying</b>	at sales office

## CONTACT

<b>Sales office</b>	De Valk Belgium	<b>Telephone</b>	+32 586 80 218
<b>Address</b>		<b>E-mail</b>	belgium@devalk.nl
	1401 PT Nieuwpoort		
	BE		

## DISCLAIMER

These particulars are given in good faith as supplied but cannot be guaranteed.



# MAC 40 OFFSHORE CATAMARAN

## GENERAL

Model	MAC 40 OFFSHORE CATAMARAN
Type	motor yacht
LOA (m)	12,20
Beam (m)	3,25
Draft (m)	0,80
Year built	1991
Displacement (t)	5
CE norm	A
Hull material	aluminium
Hull colour	red
Superstructure material	aluminium
Deck material	aluminium
Deck finish	non-skid moulded in
Superstructure deck finish	paint
Cockpit deck finish	non-skid moulded in
Antifouling (year)	2020
Deckhatch	yes
Insulation	foam
Fuel tank (litre)	aluminium 400
Fuel tank 2 (litre)	aluminium 400
Level indicator (fuel tank)	yes
Freshwater tank (litre)	aluminium Circa 200
Wheel steering	hydraulic
Outside helm position	

## ACCOMMODATION

Cabins	1
Berths	1
Floor	carpet
Open cockpit	yes



# MAC 40 OFFSHORE CATAMARAN

Saloon	yes
Headroom saloon (m)	1.60
Opening door to cockpit	yes
Galley	yes
Countertop	plastic
Sink	
Freezer	yes
Water pressure system	electrical
Ice maker	yes
Owners cabin	
Bed length (m)	2.00 x 2.00
Wardrobe	shelves
Bathroom	en suite
Toilet	en suite
Toilet system	electric
Wash basin	in the bathroom
Shower	en suite

## MACHINERY

No of engines	2
Make	Seatek
Type	6-4v-9
HP	600
kW	441
Fuel	diesel
Year installed	2001
Maximum speed (kn)	Circa 60
Cruising speed (kn)	45
Engine cooling system	freshwater heat exchanger Bowman
Drive	surface drive
Engine controls	bowden cable



# MAC 40 OFFSHORE CATAMARAN

<b>Gearbox</b>	hydraulic
<b>Exhaust</b>	watercooled
<b>Propeller type</b>	Arneson Drive
<b>Propeller blades</b>	5
<b>Propeller shaft material</b>	stainless steel
<b>Electric bilge pump</b>	yes
<b>Batteries</b>	yes
<b>Start battery</b>	(2020)
<b>Service battery</b>	(2020)
<b>Battery charger</b>	Dolphin 12V/15Ah

## NAVIGATION

<b>Compass</b>	Raytheon ST60
<b>Depth sounder</b>	yes
<b>VHF</b>	yes
<b>Rudder angle indicator</b>	yes
<b>Plotter</b>	Raytheon RCG20
<b>Navigation lights</b>	yes

## EQUIPMENT

<b>Winter cover</b>	yes
<b>Cockpit cushions</b>	yes
<b>Cockpit table</b>	yes
<b>Cockpit chairs</b>	yes
<b>Bathing platform</b>	yes
<b>Boarding ladder</b>	stainless steel
<b>Deck shower</b>	yes
<b>Anchor</b>	
<b>Lifejackets</b>	yes
<b>Horn</b>	
<b>Fenders</b>	yes

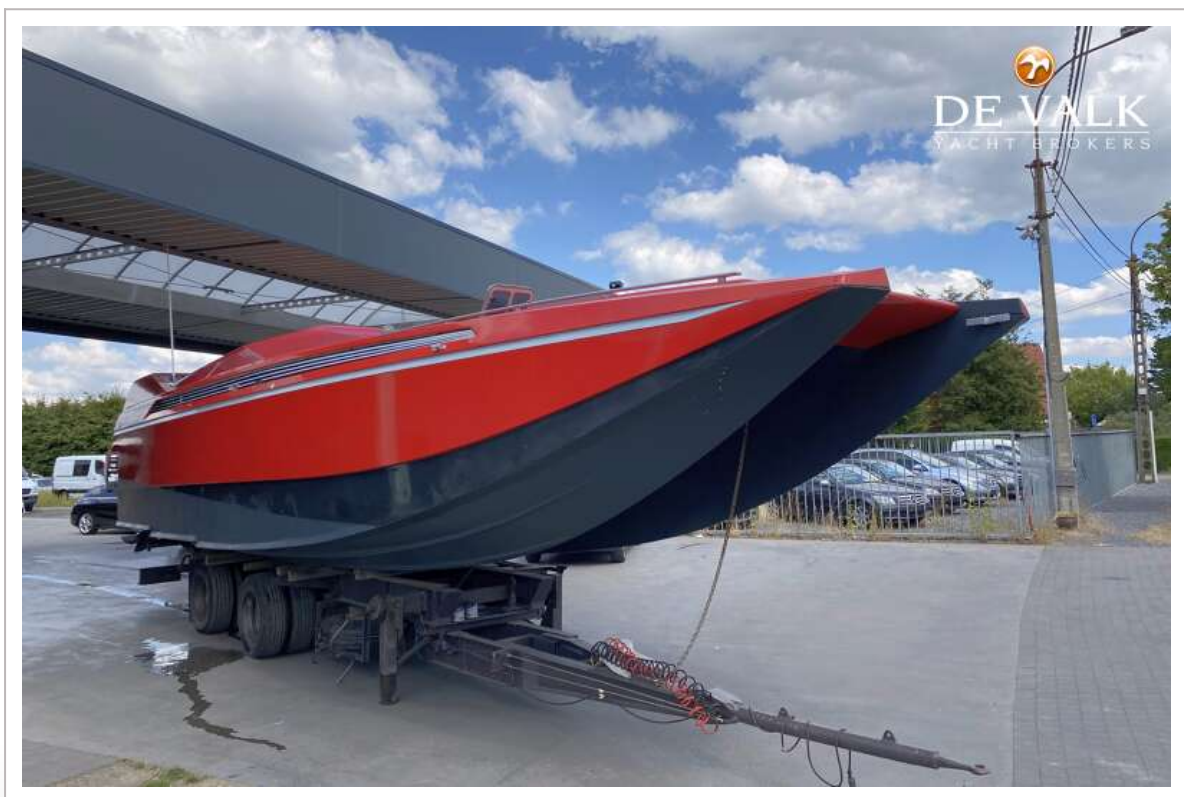


# MAC 40 OFFSHORE CATAMARAN

Mooring lines	yes
Spare parts	yes
Tools	yes
Radio	yes
Radio-cd player	yes
Cockpit speakers	yes
Speakers in salon	yes
Speakers in cabin	yes
Clock - barometer	yes
Fire extinguisher	yes
Extinguisher in engine room	yes



# MAC 40 OFFSHORE CATAMARAN



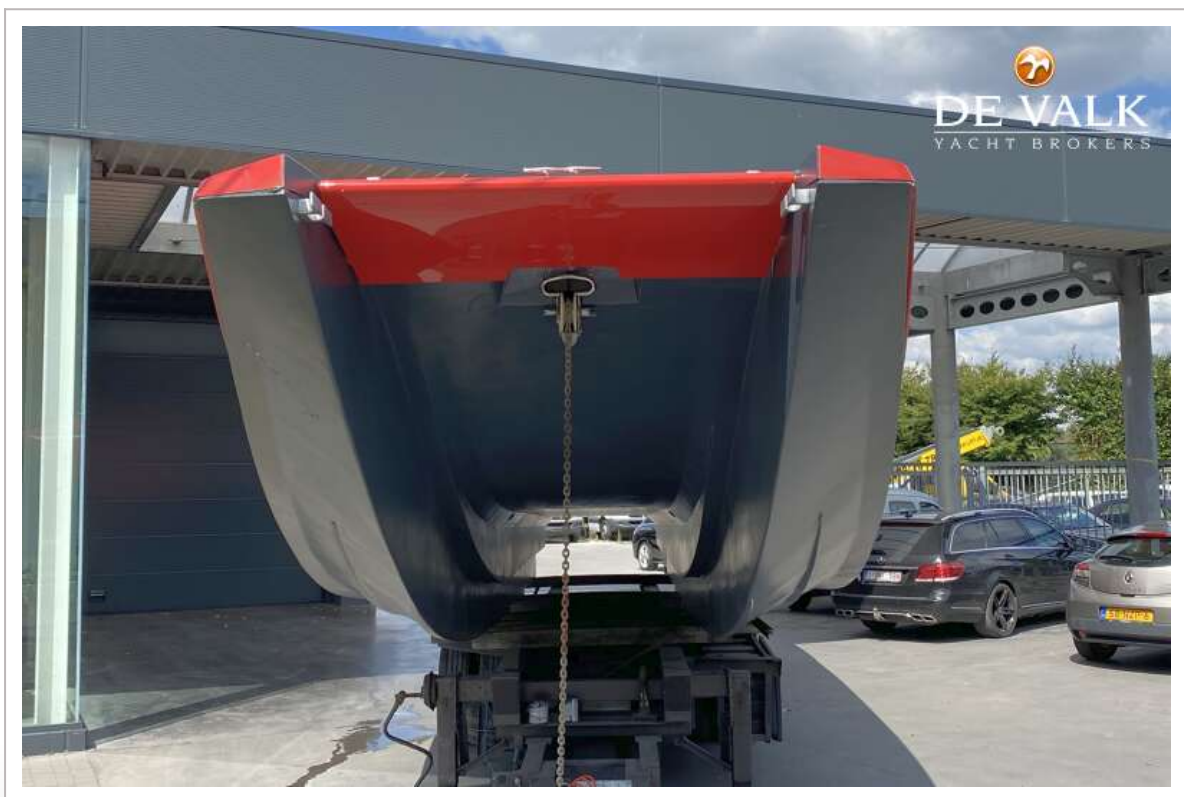
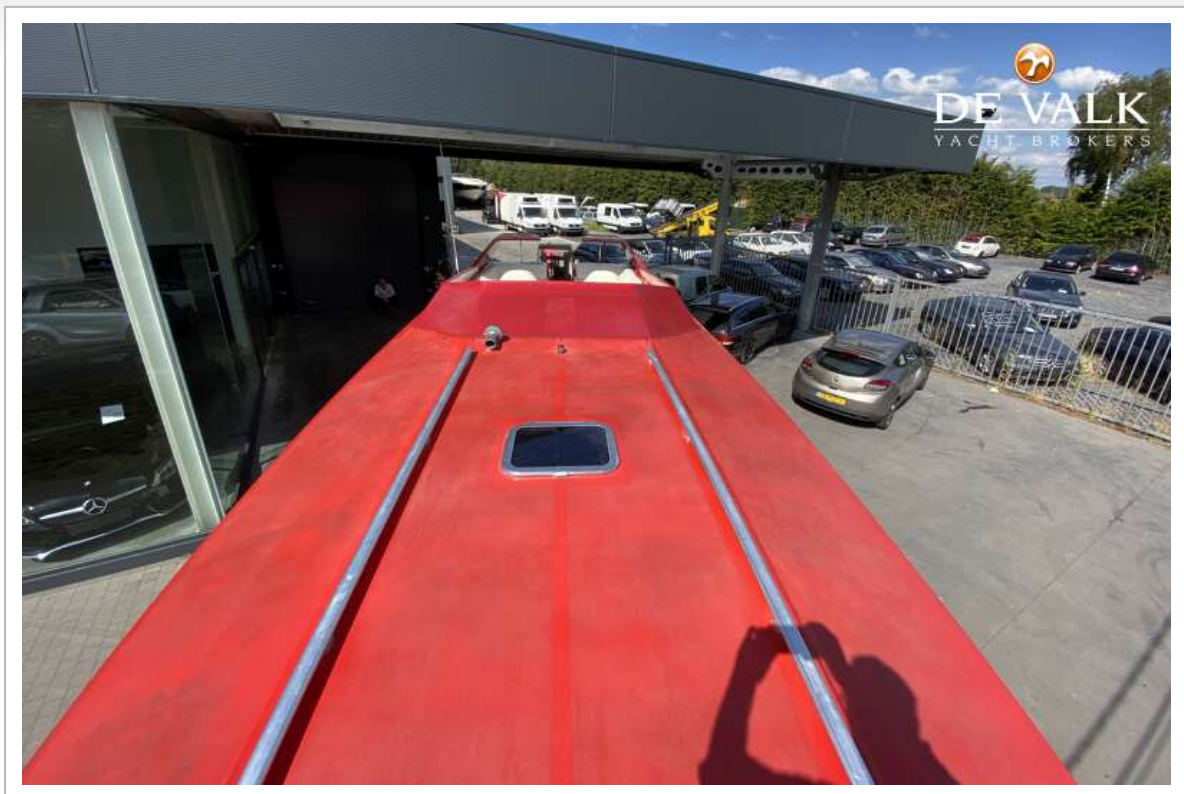


# MAC 40 OFFSHORE CATAMARAN





# MAC 40 OFFSHORE CATAMARAN

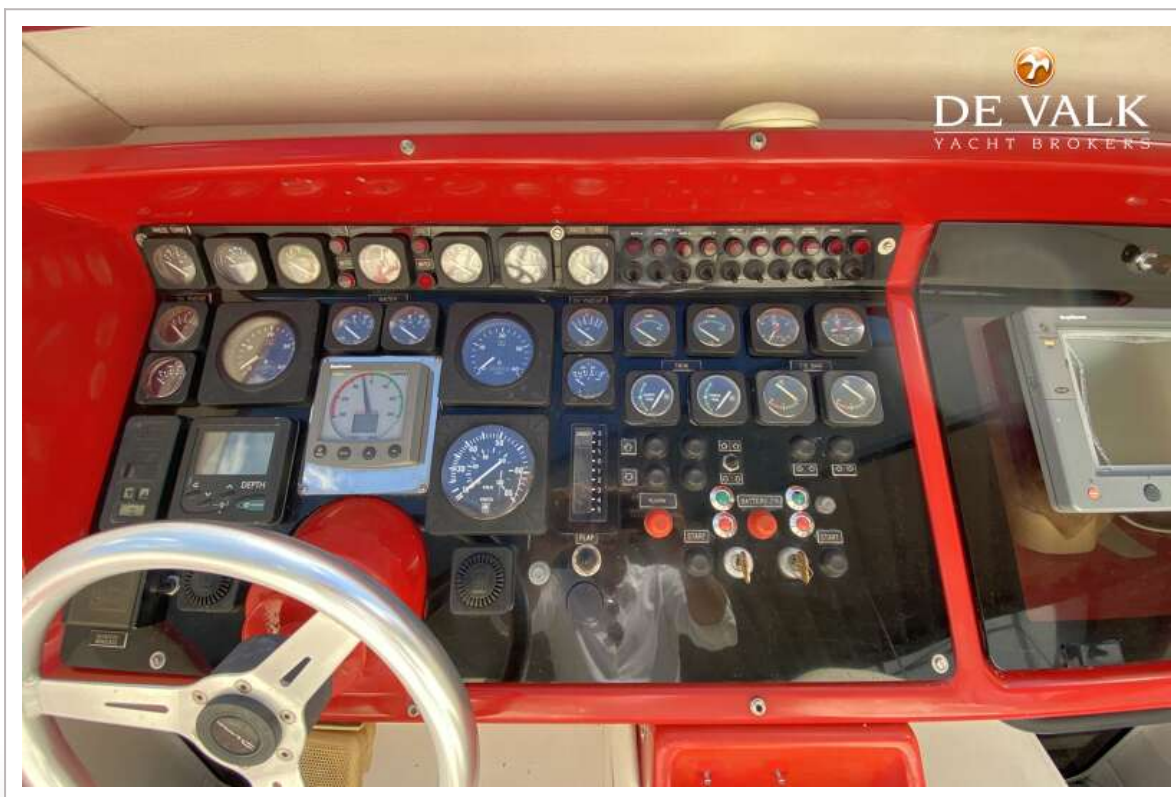


# MAC 40 OFFSHORE CATAMARAN





# MAC 40 OFFSHORE CATAMARAN



# MAC 40 OFFSHORE CATAMARAN





# MAC 40 OFFSHORE CATAMARAN





# MAC 40 OFFSHORE CATAMARAN



# MAC 40 OFFSHORE CATAMARAN





# MAC 40 OFFSHORE CATAMARAN



# MAC 40 OFFSHORE CATAMARAN



# MAC 40 OFFSHORE CATAMARAN





# MAC 40 OFFSHORE CATAMARAN



# MAC 40 OFFSHORE CATAMARAN

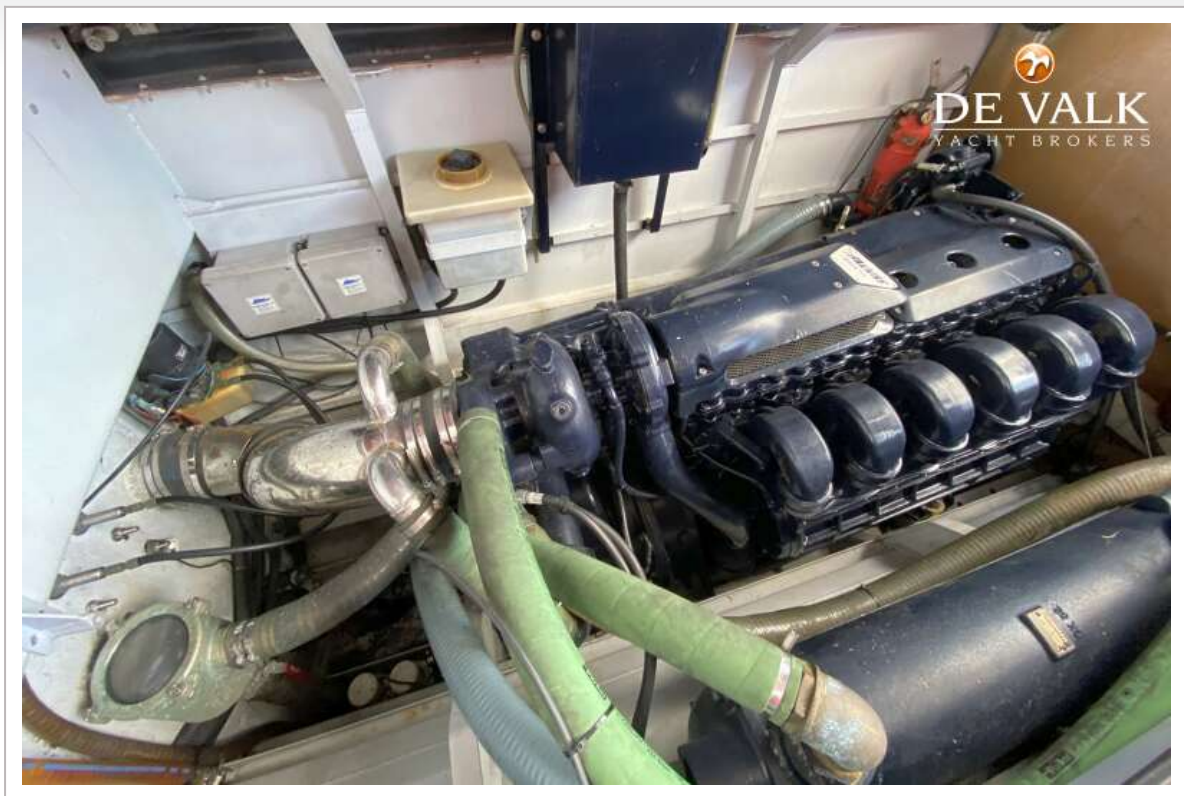


# MAC 40 OFFSHORE CATAMARAN





# MAC 40 OFFSHORE CATAMARAN



# MAC 40 OFFSHORE CATAMARAN

