



DE VALK
YACHT BROKERS



NELSON 45 OPEN COCKPIT



DE VALK
YACHT BROKERS

NELSON 45 OPEN COCKPIT

BROKER'S COMMENTS

Excellent opportunity to be the next owner of this unique Nelson 45 with open cockpit. Good size pilothouse / decksalon with I-shape settee and open cockpit. Wide side decks and excellent 360 degree visibility. Sturdy, reliable Ford Sabre diesels and proven sea keeping performance for in- and offshore cruising. In detail this Nelson 45 shows her age so hence the lower asking price for a quick and uncomplicated sale. A good basis to let her shine again and show off her good looks and Nelson heritage.

Marc Weijenberg

SPECIFICATIONS

Dimensions	13.70 x 3.96 x 1.18 (m)	Builder	Seaward Marine & Tyler Mouldings
Built	1982	Cabins	1
Material	GRP	Berths	3
Engine(s)	2 x Ford Sabre 2704ET diesel	Hp/Kw	2 x 250.00 (hp), 183.75 (kw)
Asking price	sold (VAT)	Lying	at sales office

CONTACT

Sales office	De Valk Sint Annaland B.V.	Telephone	+31 (0)166 601 000
Address	Koelhuisweg 4 4697 RM Sint Annaland NL	E-mail	sintannaland@devalk.nl

DISCLAIMER

These particulars are given in good faith as supplied but cannot be guaranteed.



NELSON 45 OPEN COCKPIT

GENERAL

Model	NELSON 45 OPEN COCKPIT
Type	motor yacht
LOA (m)	13,70
Beam (m)	3,96
Draft (m)	1,18
Air draft (m)	2,10
Headroom (m)	1,90
Year built	1982
Builder	Seaward Marine & Tyler Mouldings
Country	Great Britain
Designer	Arthur Mursell
Displacement (t)	14
CE norm	NA
Hull material	GRP
Hull colour	blue
Hull shape	round-bilged
Superstructure material	GRP
Rubbing strake	rubber
Deck material	GRP
Deck finish	teak (2000)
Superstructure deck finish	teak (2000)
Cockpit deck finish	teak
Dorades	2 x
Window frame	aluminium
Window material	tempered glass
Deckhatch	yes
Portholes	
Mast can be lowered	manual
Fuel tank (litre)	GRP 2 x 590
Fuel tank 2 (litre)	GRP 2 x 295



NELSON 45 OPEN COCKPIT

Freshwater tank (litre)	GRP 455 + 385
Blackwater tank (litre)	GRP (not in use)
Blackwater tank extraction	deck extraction + uw line
Wheel steering	hydraulic
Extra info	In- and exterior needs work, varnish, paint etc.
Extra info	Airdraft mast up 5,00 mtr

ACCOMMODATION

Cabins	1
Berths	3
Interior	teak
Floor	teak and holly + carpets
Open cockpit	yes
Pilot house/deck saloon	With L-shaped sofa
Headroom saloon (m)	1,90
Heating	diesel ducted hot air Eberspacher
Dinette	Opposite of galley
Galley	yes
Sink	stainless steel 2 x
Cooker	electric Kenyon 3-burner (220v)
Microwave/oven combi	Moulinex Opticook (220v)
Fridge	2 x Isotherm
Hot water system	220V + engine
Water pressure system	electrical
Owners cabin	v-bed
Bed length (m)	2,00 x 0,80
Wardrobe	hanging and shelves
Bathroom	1
Toilet	en suite
Toilet system	electric Altena
Wash basin	in the bathroom



NELSON 45 OPEN COCKPIT

Shower	en suite
Bathroom	shared II (daytoilet)
Toilet	1 x
Toilet system	manual
Wash basin	at the toilet
Shower	
Extra info	Fwd area, cabin, bathroom & galley rebuilt in 2000.

MACHINERY

No of engines	2
Make	Ford Sabre
Type	2704ET
HP	250
kW	183,75
Fuel	diesel
Year installed	1982
Year of overhaul	2004 stb engine 2007 port engine
Maximum speed (kn)	18
Cruising speed (kn)	7
Consumption (l/hr)	15
Engine hours	1820
Engine cooling system	freshwater heat exchanger
Drive	shaft
Shaft seal	(renewed)
Engine controls	bowden cable
Gearbox	Twin Disc MG507
Exhaust	watercooled
Propeller type	fixed
Propeller blades	2 x 3
Propeller shaft material	stainless steel
Shaft lubrication	water



NELSON 45 OPEN COCKPIT

Manual bilge pump	yes
Electric bilge pump	yes
Electrical installation	24v/220v
Generator	wet exhaust (small defect)
Start battery	1 x 140amp (2017)
Service battery	2 x 230amp (2017)
Battery charger	Constavolt 24v/50amp
Inverter	Victron (24-12v/20amp)
Shorepower	with cable
Extra info	2007 port engine replaced 2004 stbrd engine cylinderhead

NAVIGATION

Compass	Sestrel
Electric compass	Via autopilot
Depth sounder	Autohelm ST30
Log	Autohelm ST30
VHF	Sailor RT144C
Autopilot	Cetrek 727 + joystick
Rudder angle indicator	VDO
Radar	Raytheon 41X
GPS	(not working)
Navigation lights	yes
Searchlight	yes

EQUIPMENT

Cockpit cover	yes
Cockpit cushions	yes
Bathing platform	yes
Boarding ladder	stainless steel
Deck shower	Hot + cold
Anchor	CQR Plough



NELSON 45 OPEN COCKPIT

Anchor 2	CQR Plough
Anchor chain	45 mtr
Windlass	electrical Vetus (24v) + remote control
Sea railing	stainless steel
Grab rail (superstructure)	stainless steel
Railing side opening gates	yes
Pushpit	yes
Pulpit	yes
Life raft	container Lifeguard
Life raft (pers)	8 pers
Last life raft survey	Survey due
Lifebuoy	2 x
Wiper	3 x (with wash)
Horn	electric
Fenders	yes
Mooring lines	yes
Radio-cd player	yes
Speakers in salon	yes



NELSON 45 OPEN COCKPIT



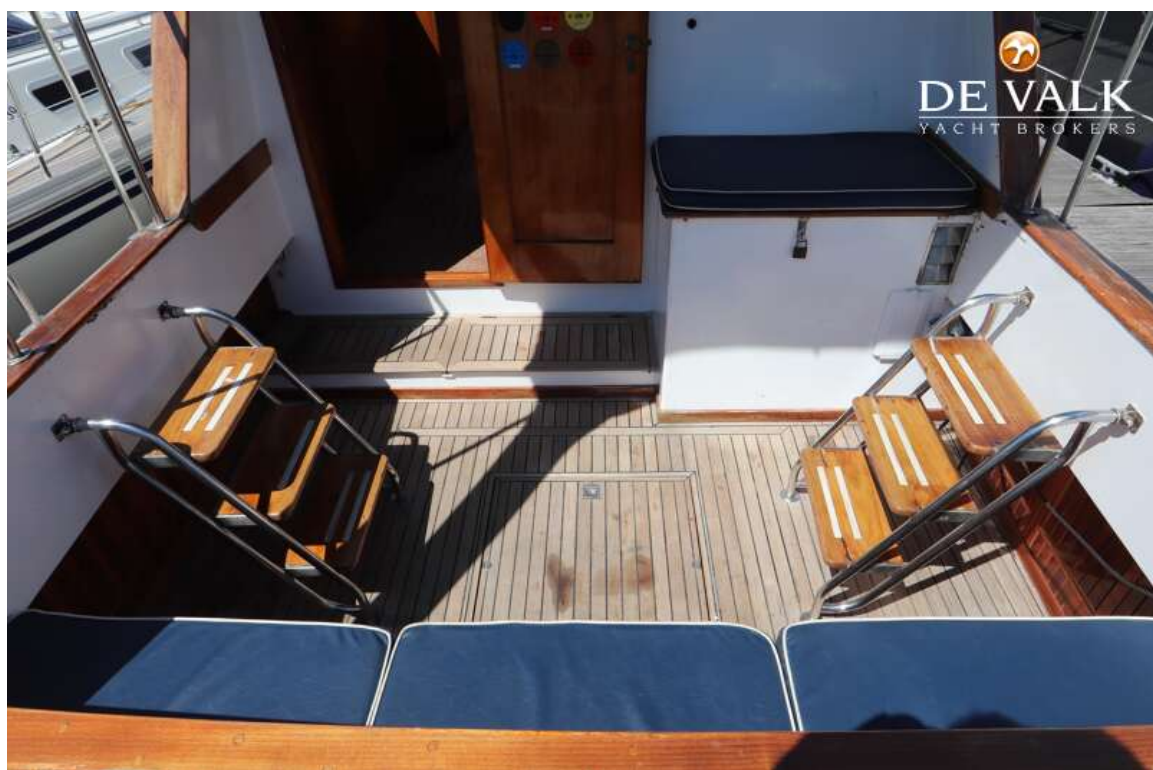
NELSON 45 OPEN COCKPIT



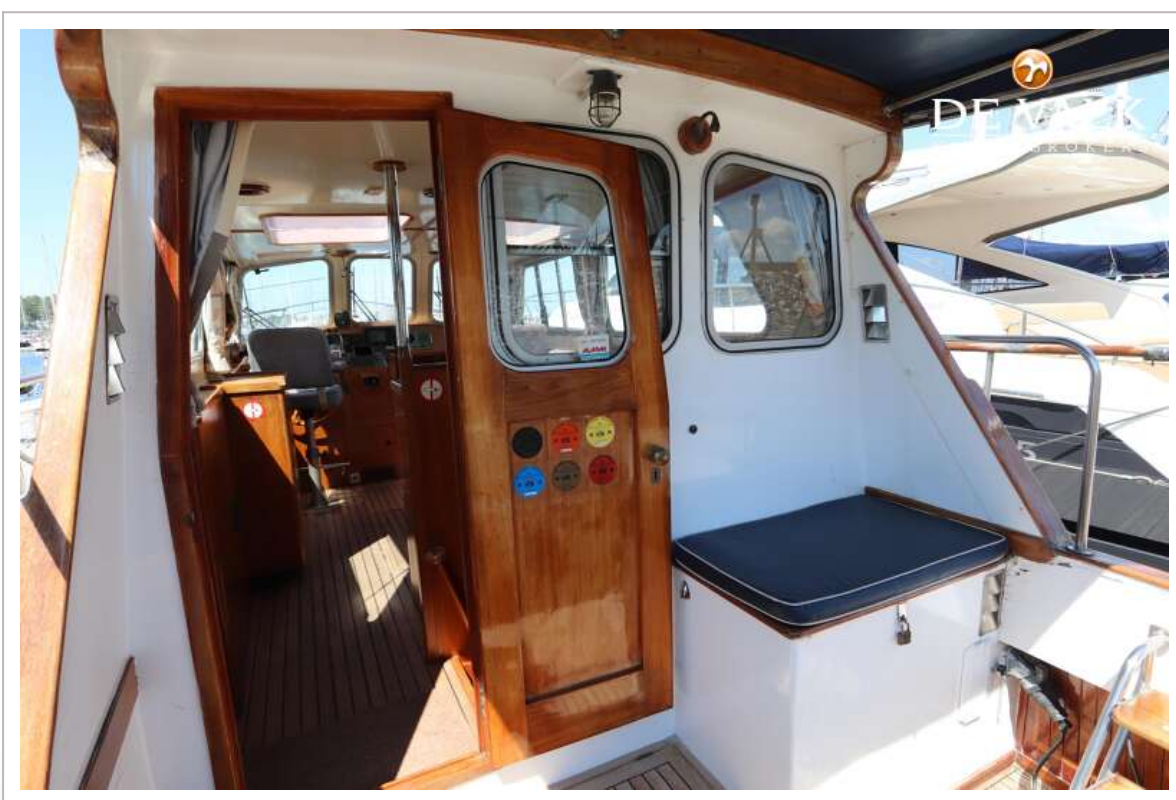
NELSON 45 OPEN COCKPIT



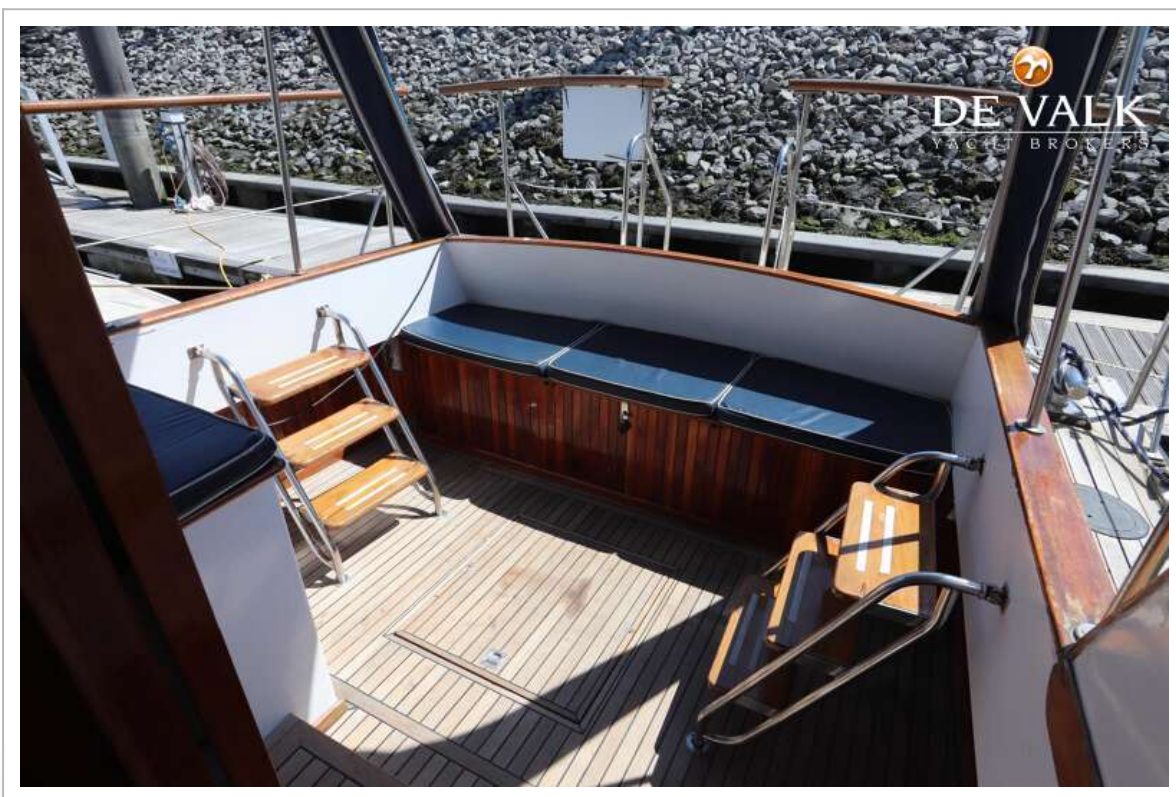
NELSON 45 OPEN COCKPIT



NELSON 45 OPEN COCKPIT



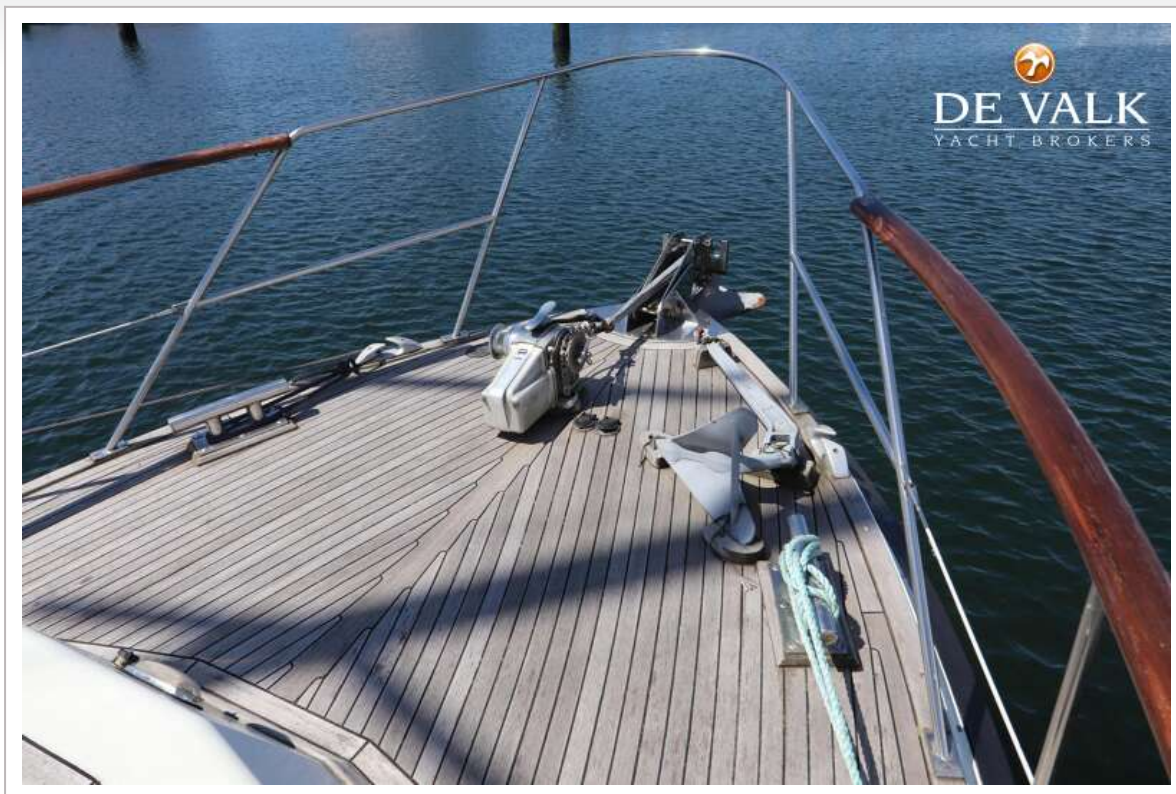
NELSON 45 OPEN COCKPIT



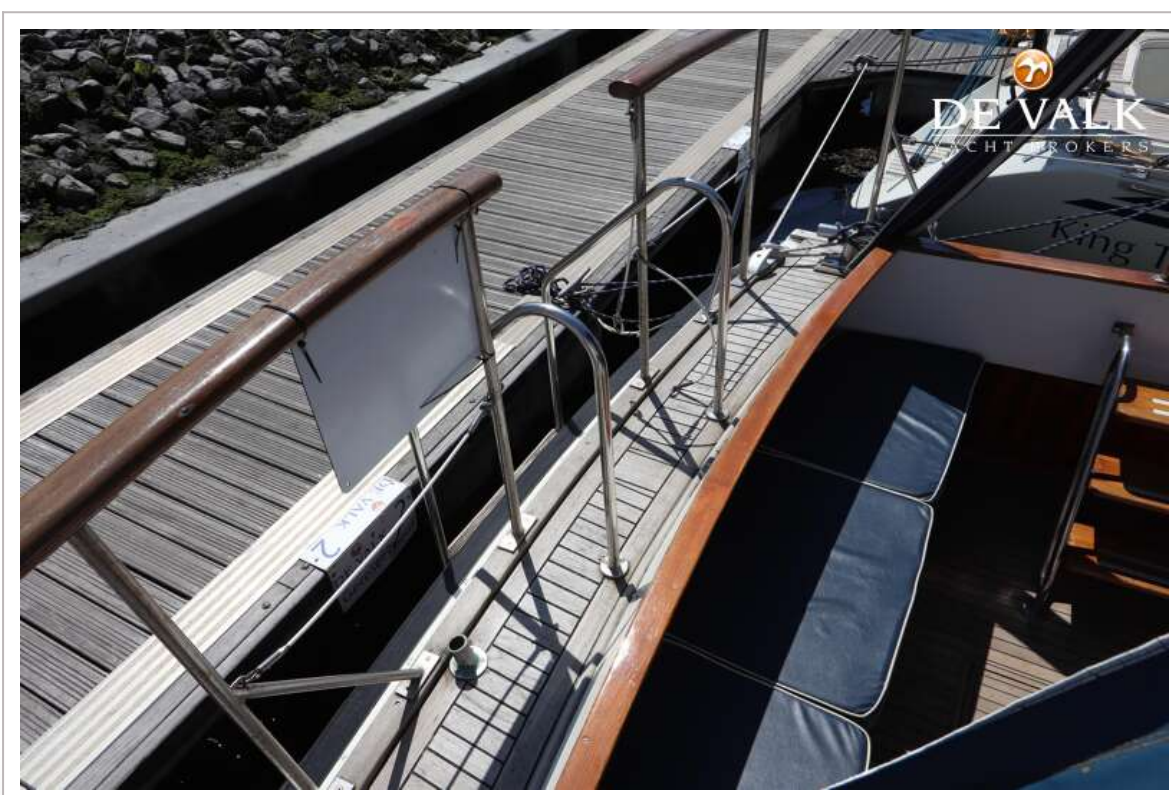
NELSON 45 OPEN COCKPIT



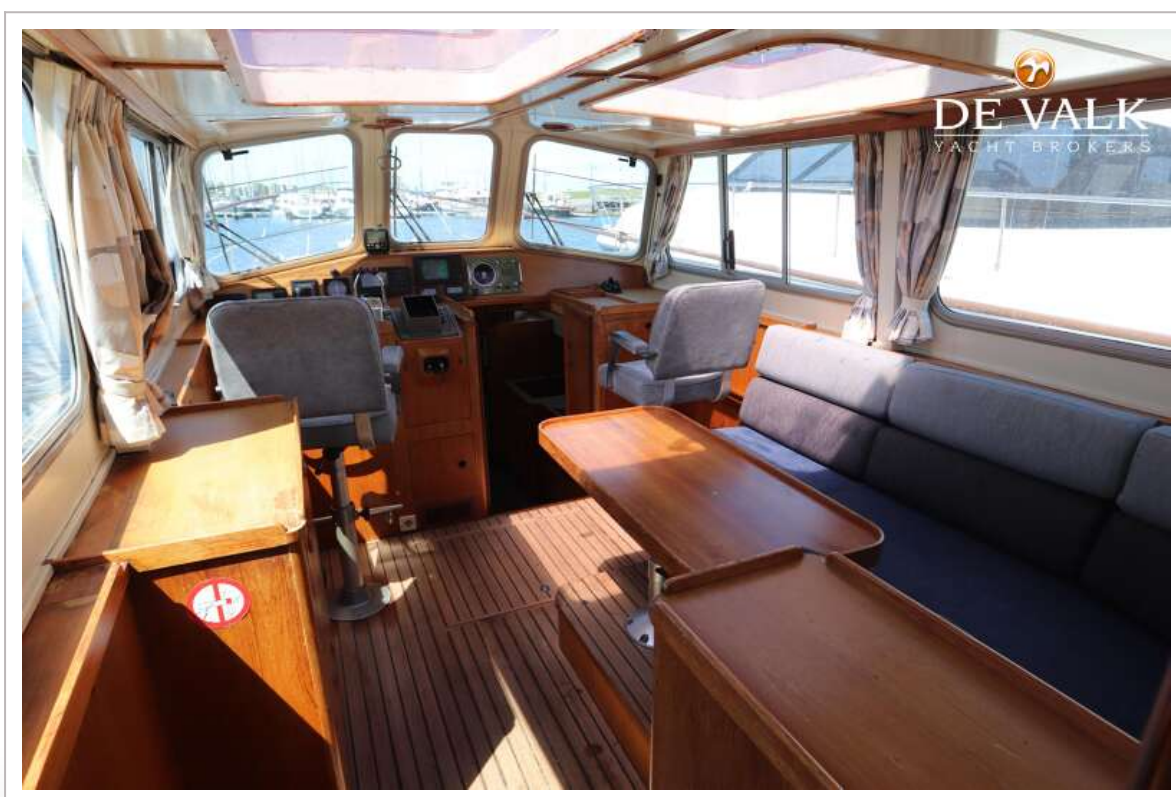
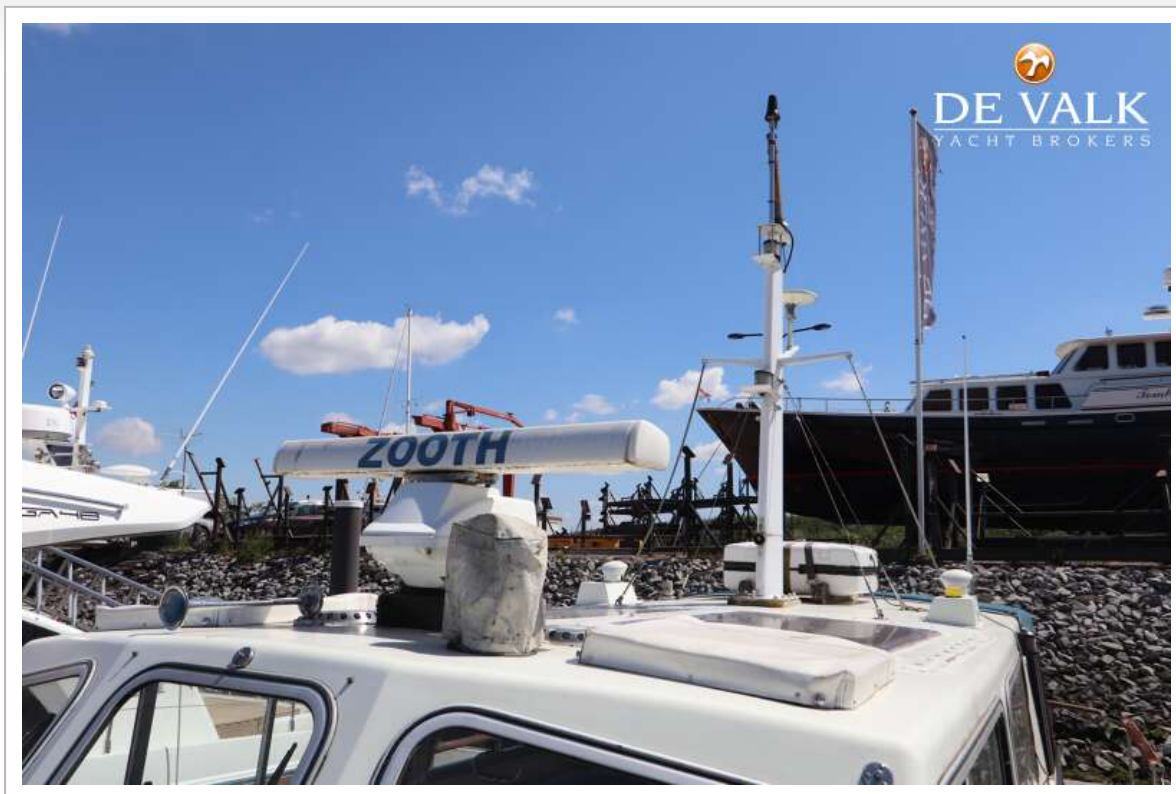
NELSON 45 OPEN COCKPIT



NELSON 45 OPEN COCKPIT



NELSON 45 OPEN COCKPIT



NELSON 45 OPEN COCKPIT



NELSON 45 OPEN COCKPIT



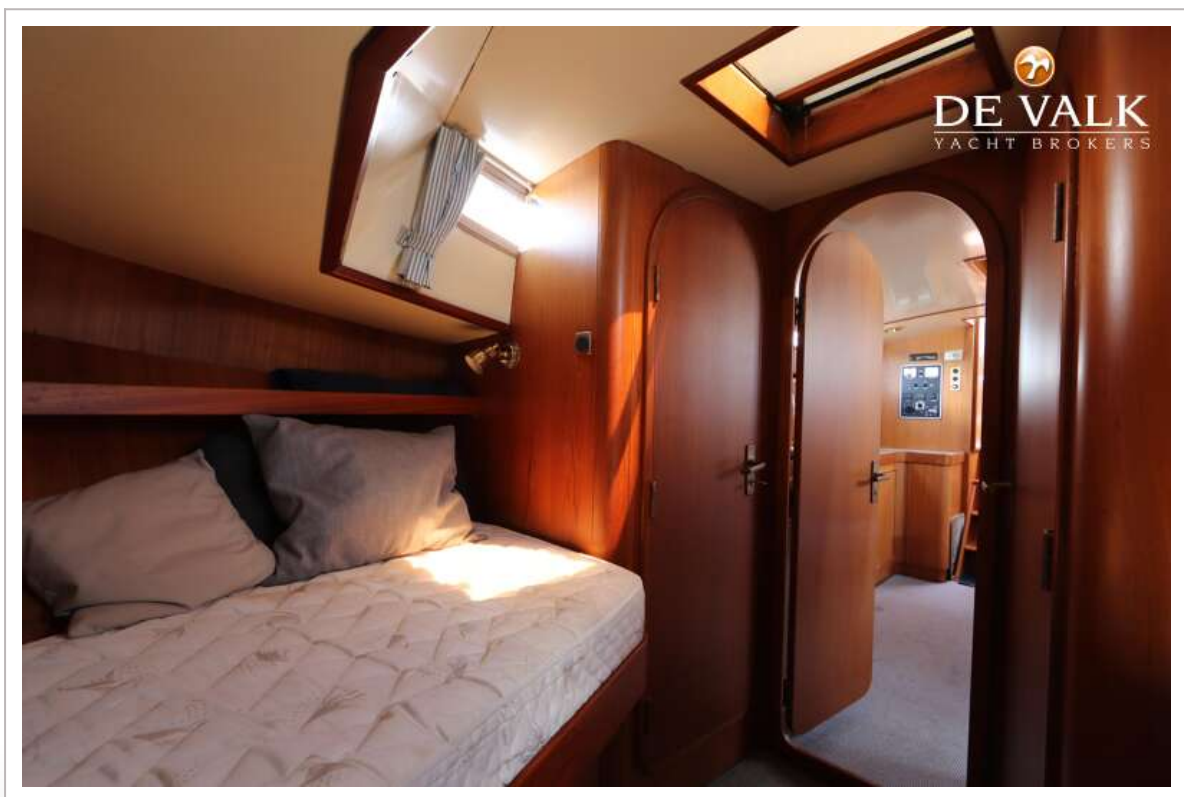
NELSON 45 OPEN COCKPIT



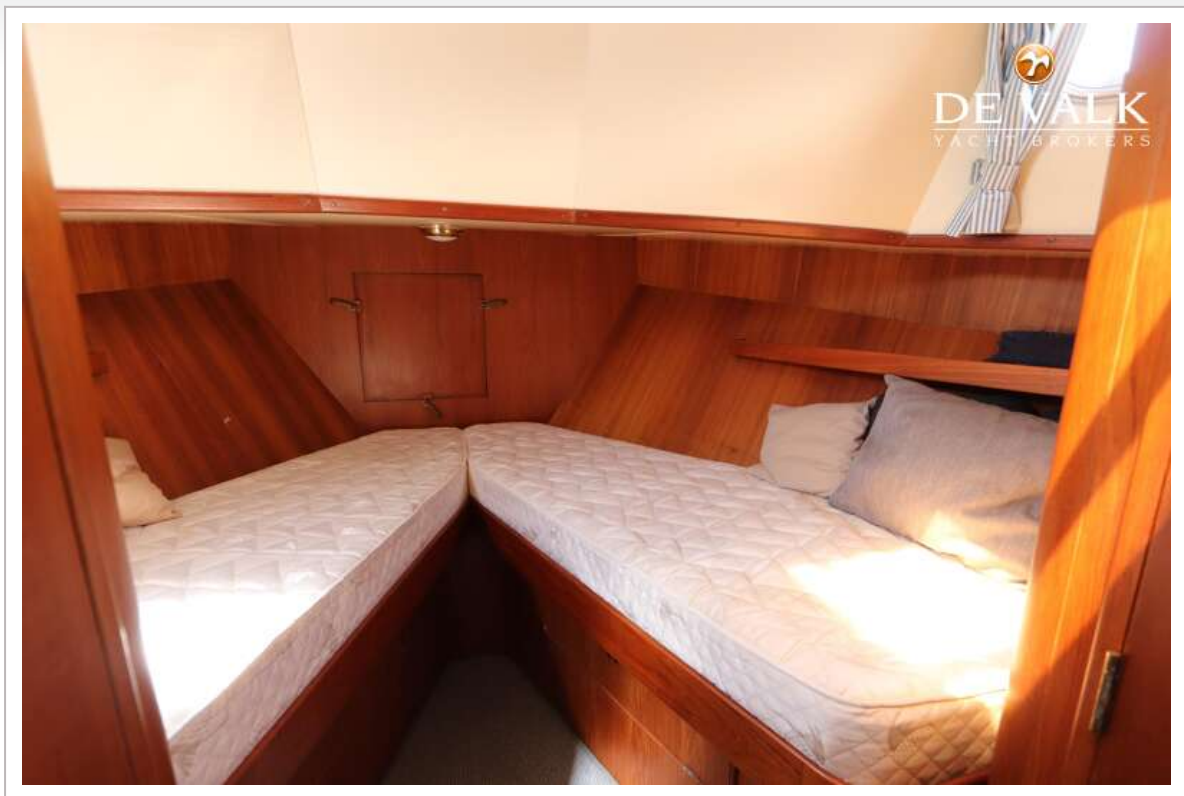
NELSON 45 OPEN COCKPIT



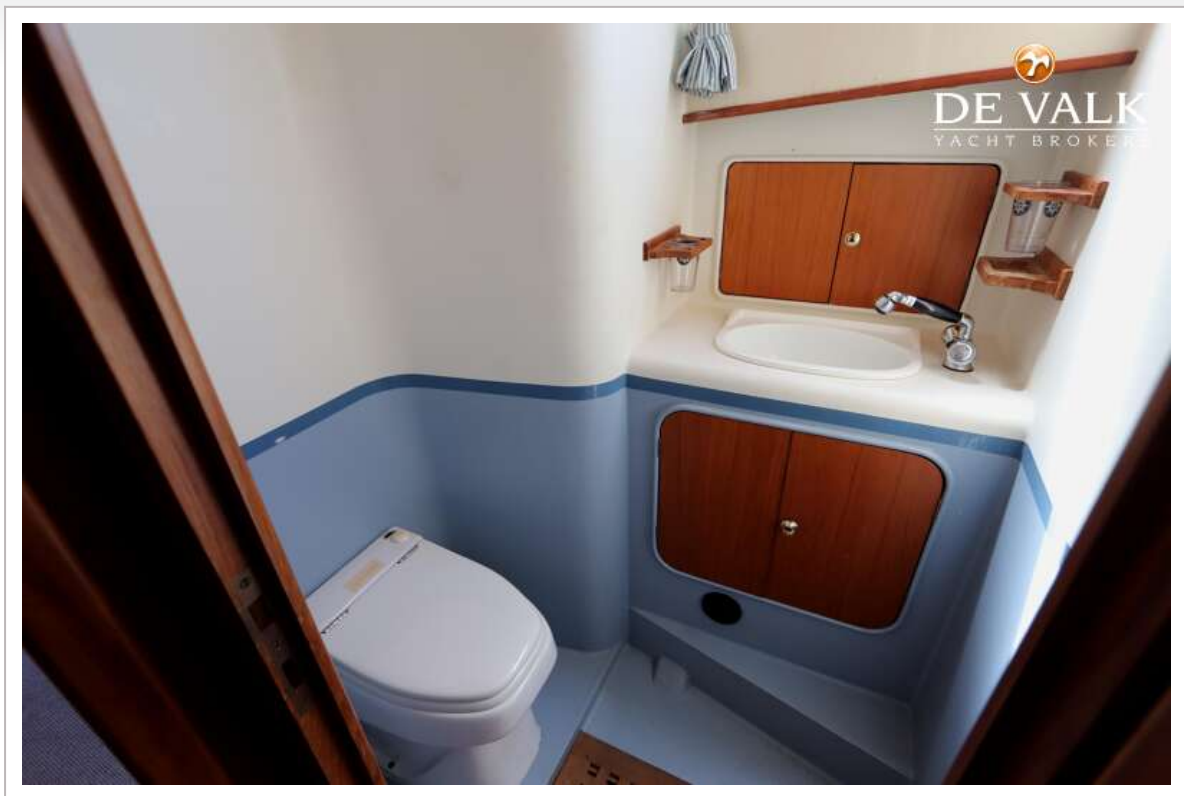
NELSON 45 OPEN COCKPIT



NELSON 45 OPEN COCKPIT



NELSON 45 OPEN COCKPIT



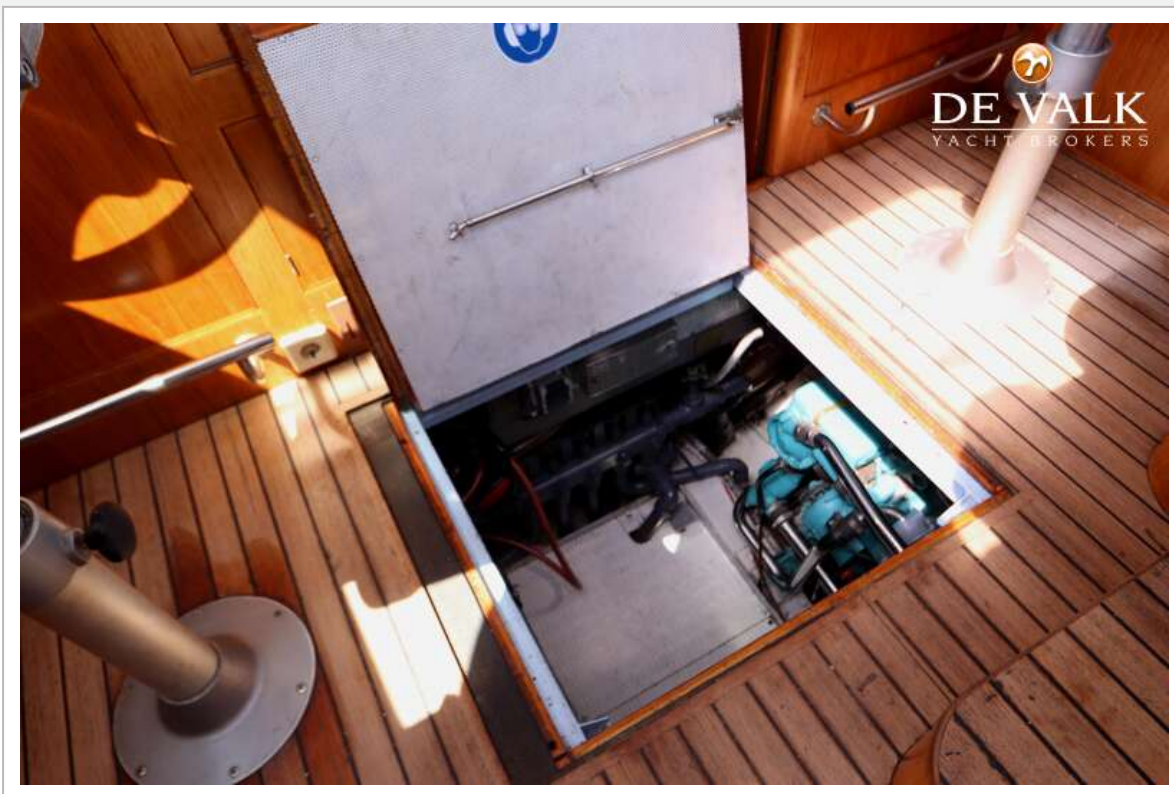
NELSON 45 OPEN COCKPIT



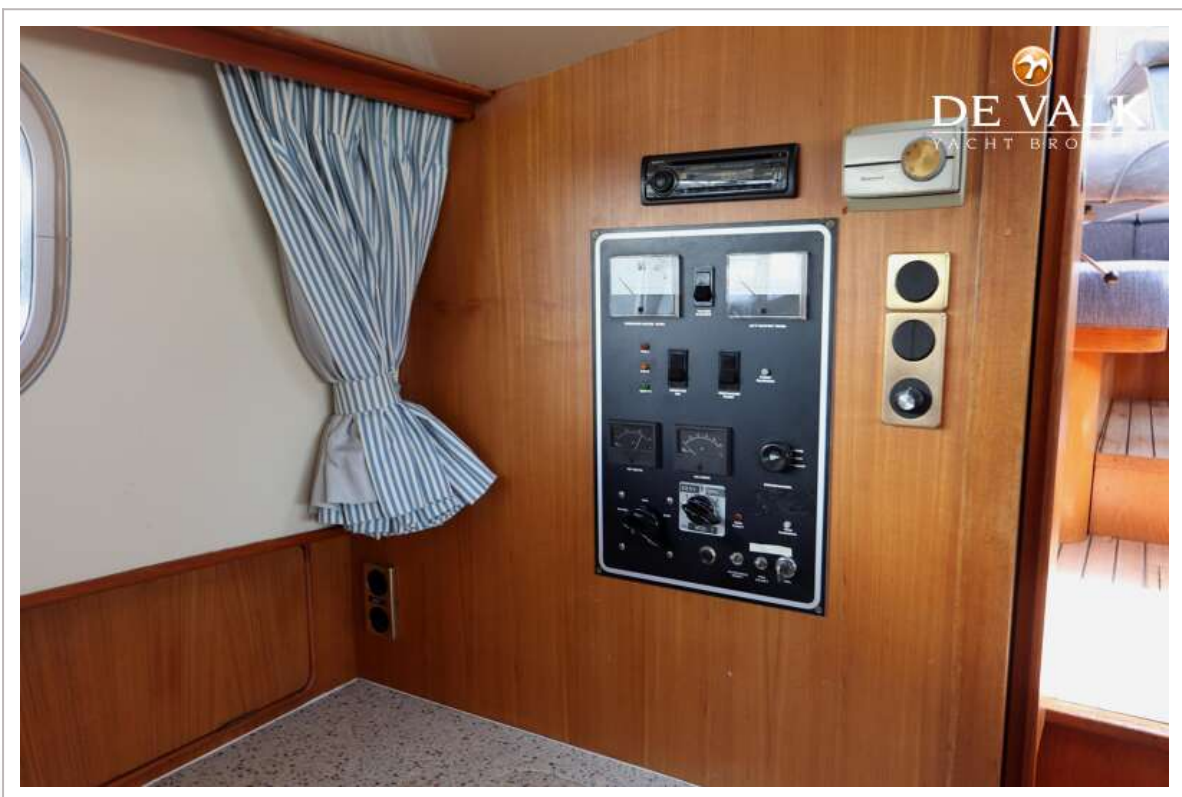
NELSON 45 OPEN COCKPIT



NELSON 45 OPEN COCKPIT



NELSON 45 OPEN COCKPIT



NELSON 45 OPEN COCKPIT

