



DE VALK
YACHT BROKERS



LONG RANGE TRAWLER 42



DE VALK
YACHT BROKERS

LONG RANGE TRAWLER 42

BROKER'S COMMENTS

This Long Range Trawler 42 is quite unique on the European market. In "as new" condition this trawler was conceived, built and fitted out for Atlantic crossings and any other destination you can think of. Very comparable and in some cases even better than Diesel Duck and Seahorse Trawlers. Much effort was put into safety, comfort, reliability and range. She can cruise up to 5000nm. With her full beam salon you will be surprised how much accommodation, storage and space has been created. A rare opportunity to obtain an almost new, true "go anywhere, escape from it all" Trawler Yacht.

Marc Weijenberg

SPECIFICATIONS

Dimensions	12.82 x 4.50 x 1.40 (m)	Builder	Heijmans Scheepsbouw
Built	2020	Cabins	1
Material	Steel	Berths	6
Engine(s)	1 x John Deere 4045 AFM M1 diesel	Hp/Kw	160.00 (hp), 117.76 (kw)
Asking price	sold (VAT)	Lying	The Netherlands

CONTACT

Sales office	De Valk Thuishaven	Telephone	+31 35 5829042
Address	Peperstraat 7 1411 PX Naarden NL	E-mail	thuishaven@devalk.nl

DISCLAIMER

These particulars are given in good faith as supplied but cannot be guaranteed.



LONG RANGE TRAWLER 42

GENERAL

Model	LONG RANGE TRAWLER 42
Type	motor yacht
LOA (m)	12,82
Beam (m)	4,50
Draft (m)	1,40
Air draft (m)	3,70
Headroom (m)	1,95
Year built	2020
Builder	Heijmans Scheepsbouw
Country	The Netherlands
Designer	Gaastmeer Yachtdesign
Displacement (t)	22
Ballast (tonnes)	lead 1,25
CE norm	A
Hull material	steel
Hull colour	grey 6 - 20mm, rib distance 40mm
Hull shape	hard chine
Keel type	long keel
Superstructure material	aluminium 5 mm
Superstructure (mm)	yes
Deck plate thickness (mm)	5 mm
Rubbing strake	steel
Deck material	steel
Deck finish	non-skid paint
Cockpit deck finish	non-skid paint
Antifouling (year)	Ecospeed glasscoating
Window material	15mm tempered glass (Gebo) + 12 mm Lexan
Deckhatch	yes
Portholes	yes
Insulation	Rockwool foil + Masscoat temperature and sound insulation



LONG RANGE TRAWLER 42

Mast can be lowered	manual
Fuel tank (litre)	steel 2 x 1578
Fuel tank 2 (litre)	steel 2 x 884
Level indicator (fuel tank)	yes
Fuel daytank (litre)	steel 1 x 98 (incl. electric pump)
Freshwater tank (litre)	steel 2 x 900
Blackwater tank (litre)	polyethylene 80
Level indicator (blackwater)	yes
Blackwater tank extraction	deck extraction + pump
Greywater tank (litre)	1 x (+pump)
Wheel steering	hydraulic (2 x cilinder)
Emergency tiller	yes
More info on paintwork	2-component system
Extra info	Draft depends on load; 1,30 to 1,50 mtr.
Extra info	4 x watertight bulkhead, "Fishtail" rudder, CJC fuel seperator/polisher system. All tanks have large manhole-inspection lids.
Extra info	For and aft there are 3 large lazarette's/storage spaces. The sidedeck and steps on deck are well designed and large for easy access.

ACCOMMODATION

Cabins	1
Berths	6
Interior	Modern paneling
Floor	PVC
Open cockpit	yes
Pilot house/deck saloon	Two opening doors towards deck plus settee and helmsman seat,
Saloon	Full beam salon for added comfort and space
Headroom saloon (m)	2,00-2,05
Heating	central heating Kabola 9kW + kickspace heating



LONG RANGE TRAWLER 42

Dinette	with convertible sofa (into 2 pers bed)
Dinette to convert into berth	dimensions bed; 2,10 x 1,50mtr
Opening door to cockpit	yes
Galley	U-shape with brushed stainless steel countertops
Sink	1 x
Cooker	Schott 3 burners (220v, induction)
Extractor	Dometic
Microwave	Zanussi (220v)
Fridge	Liebherr 226 ltr (220v)
Hot water system	220V/engine/heating
Water pressure system	2 x pump
Dishwasher	Whirlpool (220v)
Owners cabin	v-bed
Bed length (m)	2,10 x 0,90 mtr, headroom 2,00 mtr
Wardrobe	hanging/drawers/shelves
Bathroom	en suite 1
Toilet	en suite
Toilet system	electric Jabsco
Wash basin	in the bathroom
Shower	separate
Extra info	There is enough space in the owner cabin to convert v-bed into double bed.
Bathroom	yes
Extra info	2nd bathroom/dayhead (incl. shower) between salon and pilothouse.
Washing machine	AEG 220v (toploader)
Dryer	Beko (heatpump 220v)
Extra info	The whole interior and layout breathes practicality and cruising comfort. It has mechanical ventilation as well.

MACHINERY

No of engines	1
---------------	---



LONG RANGE TRAWLER 42

Make	John Deere
Type	4045 AFM M1
HP	160
kW	117.76
Fuel	diesel
Year installed	2021
Maximum speed (kn)	8,8
Cruising speed (kn)	6,3
Consumption (l/hr)	5,1
Range (nm)	5000
Engine hours	1350
Engine cooling system	freshwater heat exchanger
Drive	shaft
Engine controls	bowden cable
Gearbox	hydraulic Twindisc (3:1 heavy duty)
Bowthruster	electric Vetus (proportional)
Exhaust	dry (new muffler 2023)
Propeller type	fixed
Propeller blades	4
Propeller shaft material	stainless steel
Shaft lubrication	oilbath Blokland
Electric bilge pump	1x 24v / 1 x 6000 ltr (220v)
Bilge alarm	+ low oil and diesel alarm
Electrical installation	24v/220v
Generator	silent separator Fisher Panda 5000i Neo (5kW)
Running hours generator	280
Start battery	2 x 230 (2020)
Service battery	2 x 230 (2023)
Generator battery	1 x 12v (2020 + batterycharger)
Bowthruster battery	2 x 12v (2020)
Battery monitor	Victron BV712 Smart + Victron graphic display
Battery charger/inverter	Victron Quattro 24v/3000watt/70 amp



LONG RANGE TRAWLER 42

Solar panel	6 x 120watt
Shorepower	with cable
Insulation transformer	Victron 3600watt
Watermaker	Schenker Zen (24v - 30 ltr/hour)
Stabilizers	Paravanes stabilizers system for under way and 0-speed.
Extra info	2 x alternator on main engine (incl. 24v/100amp)
Extra info	Acces engine via pilothouse, first part has standing headroom.

NAVIGATION

Compass	Ritchie HB845
Electric compass	Furuno SC33 Sat compass
Depth sounder/log	Furuno DST800
Windset	Furuno FL500
VHF	Furuno FM4800
VHF handheld	Lowrance
Autopilot	Furuno Navpilot 711C (+ spare hydraulic pump)
Rudder angle indicator	yes
Radar	Furuno 1945 10"/6kW with Arpa function
GPS	yes
Plotter	Furuno GP1971F 9" display
Personal computer	small heavy duty laptop with SatcomC and SART Tron ais
PC connection	yes
Wifi antenna	yes
Electronis chart(s)	C-Maps
AIS transponder	Furuno FA50 Class B
EPIRB	Jotron 406
Camera	stern and engineroom view
Navigation lights	LED + decklights
Searchlight	Powerfull 180watt LED bar
Extra info	Victron lithium 20ah back-up powerpack



LONG RANGE TRAWLER 42

EQUIPMENT

Bimini	on the coachroof
Bathing platform	yes
Boarding ladder	yes
Transom door	yes
Gangway	Aluminum
Deck shower	hot+cold water
Anchor	Delta (40kg)
Anchor chain	50 mtr (13mm) + 100 mtr line
Windlass	electrical Maxwell RX12/24v
Capstan	Maxwell RX12
Deck wash	3.5 bar (fresh/saltwater)
Dinghy	inflatable Talamex 2,70 mtr
Outboard	Honda 2,5hp (4-stroke)
Outboard support	yes
Deck crane	manual 100kg
Sea railing	steel
Railing side opening gates	2 x
Pulpit	steel
Life raft	container Viking + grab-pack
Life raft (pers)	6
Last life raft survey	yes
Lifejackets	2 x
Lifebuoy	2 x
Wiper	Speich (horizontal) with wash
Horn	air pressure
Fenders	yes
Mooring lines	yes
Spare parts	yes
Radio-cd player	Pioneer
Speakers in salon	yes



LONG RANGE TRAWLER 42

Clock - barometer	yes
Fire extinguisher	5 x
Latest extinguisher survey	2023
Auto extinguisher system	2023
Extra info	100 mtr towline plus 20 and 40 mtr warps

RIGGING

Extra info	Extra storm/emergency orange jib for wind-assisted cruising, complete with winch/halyard/stoppers/sheets
------------	--



LONG RANGE TRAWLER 42



LONG RANGE TRAWLER 42



LONG RANGE TRAWLER 42



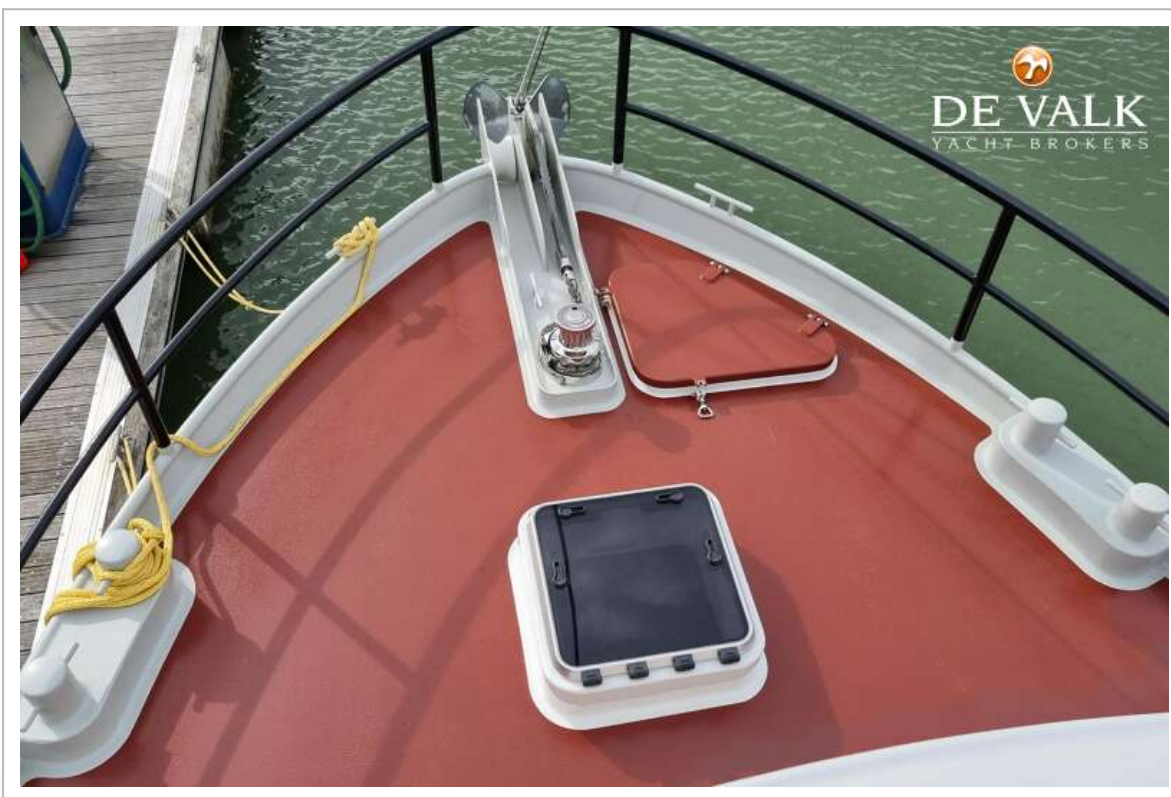
LONG RANGE TRAWLER 42



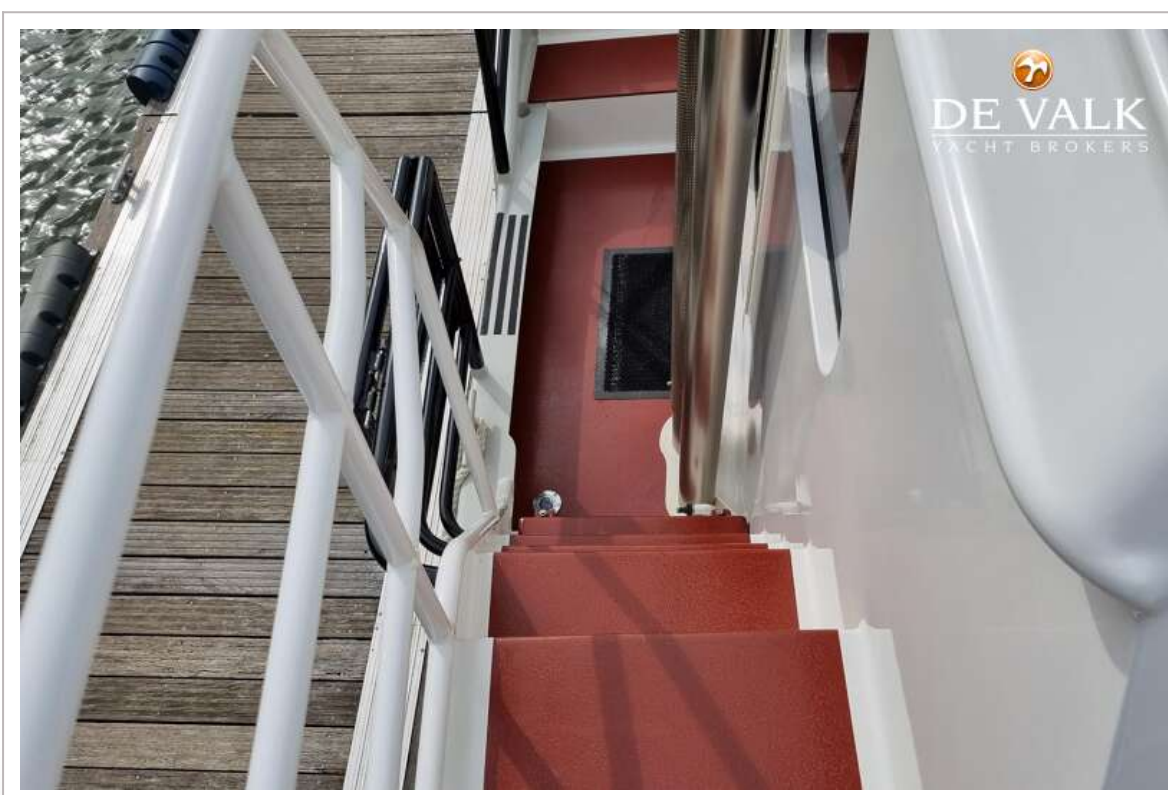
LONG RANGE TRAWLER 42



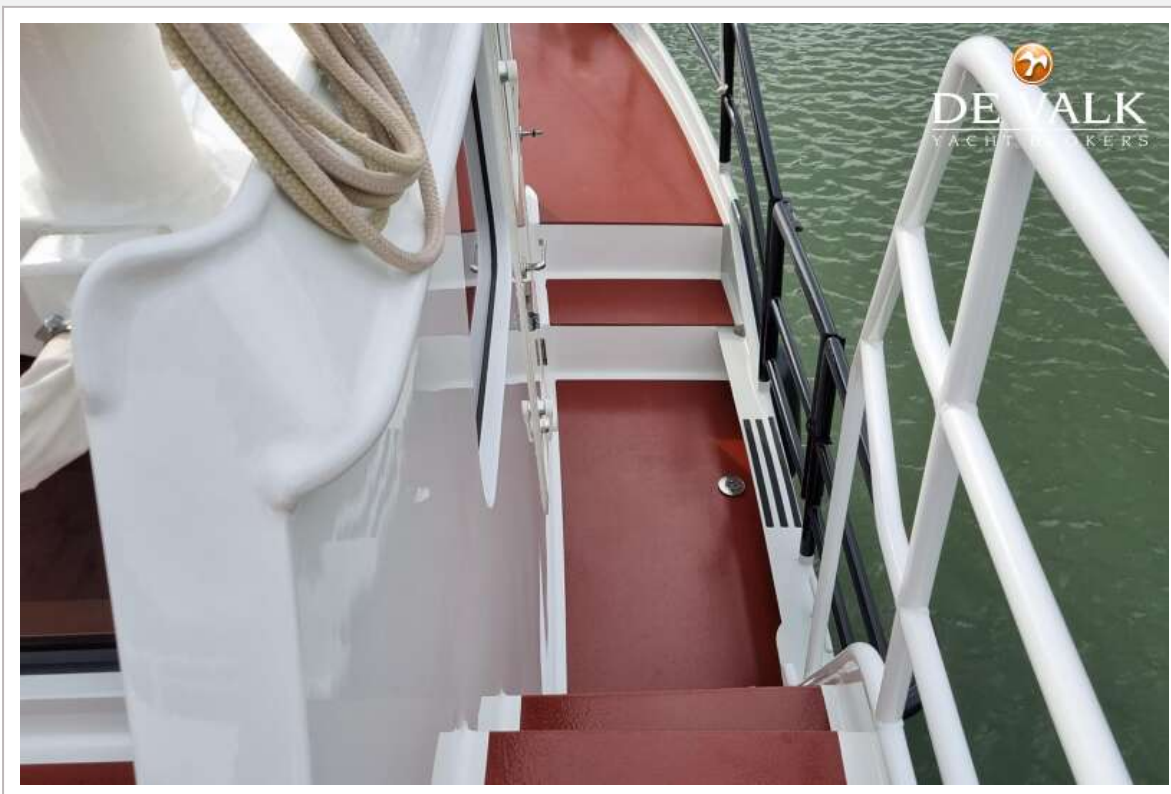
LONG RANGE TRAWLER 42



LONG RANGE TRAWLER 42



LONG RANGE TRAWLER 42



LONG RANGE TRAWLER 42



LONG RANGE TRAWLER 42



LONG RANGE TRAWLER 42



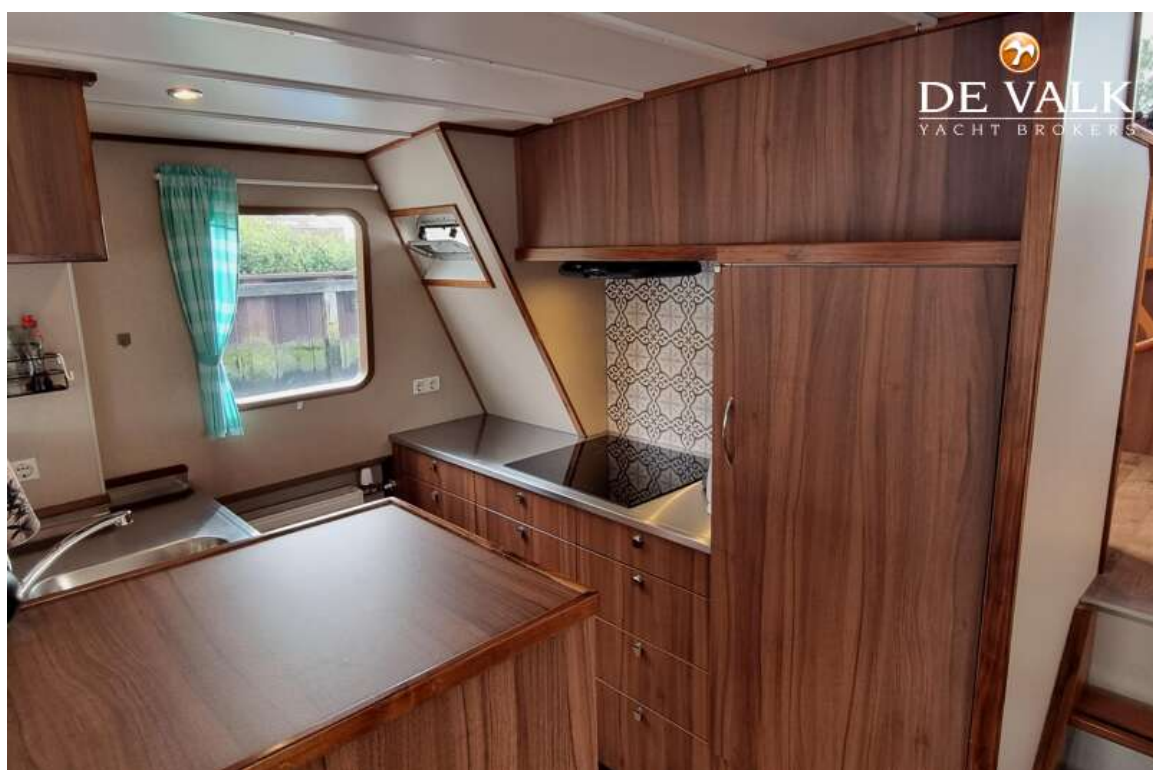
LONG RANGE TRAWLER 42



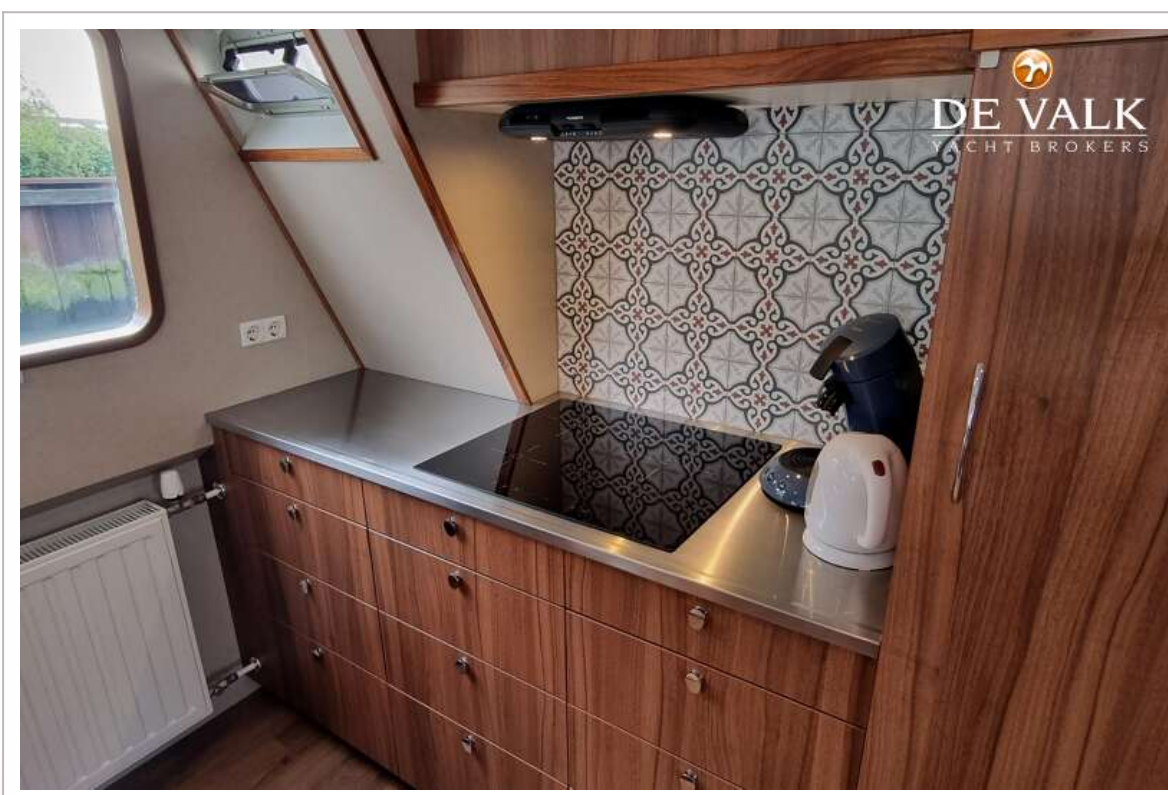
LONG RANGE TRAWLER 42



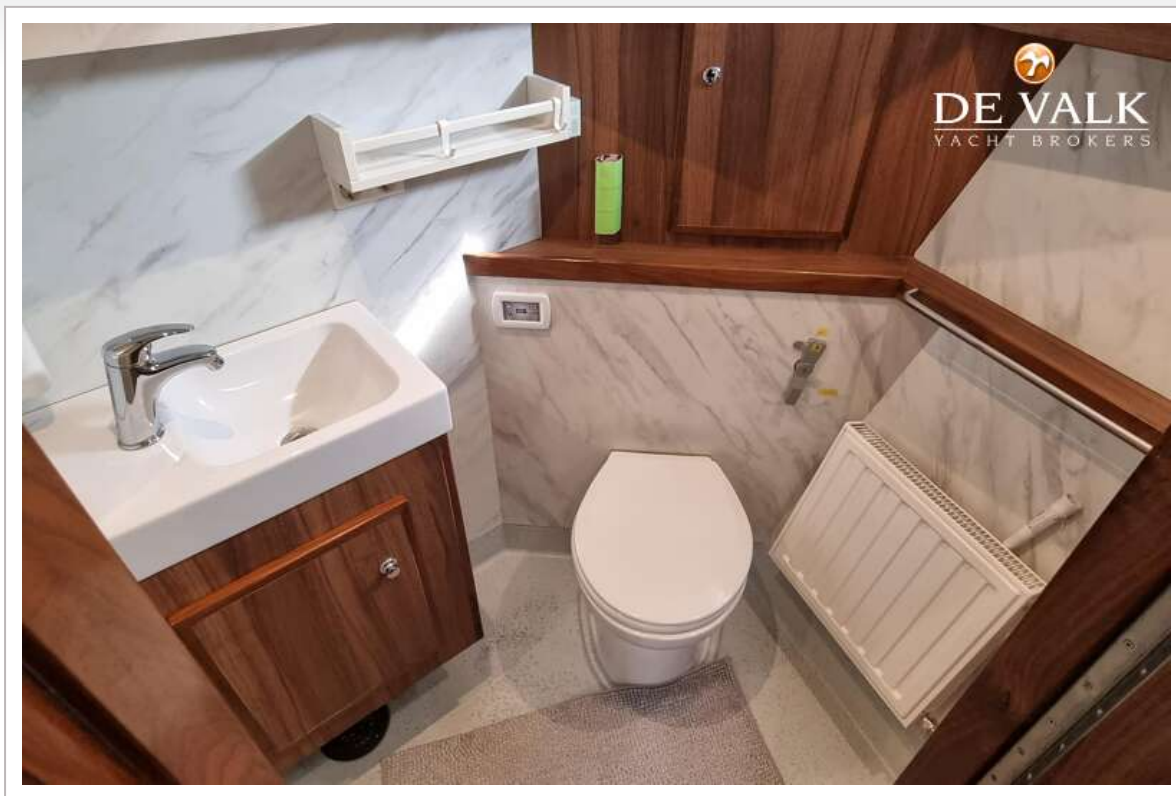
LONG RANGE TRAWLER 42



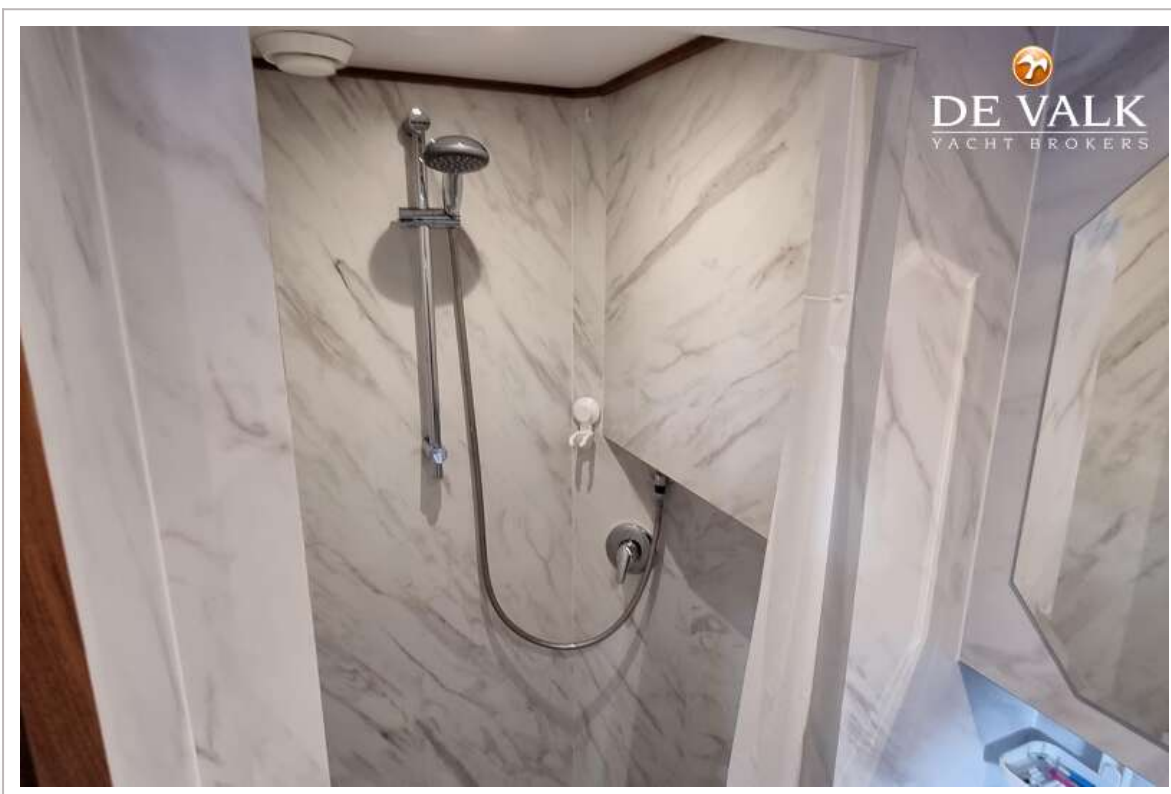
LONG RANGE TRAWLER 42



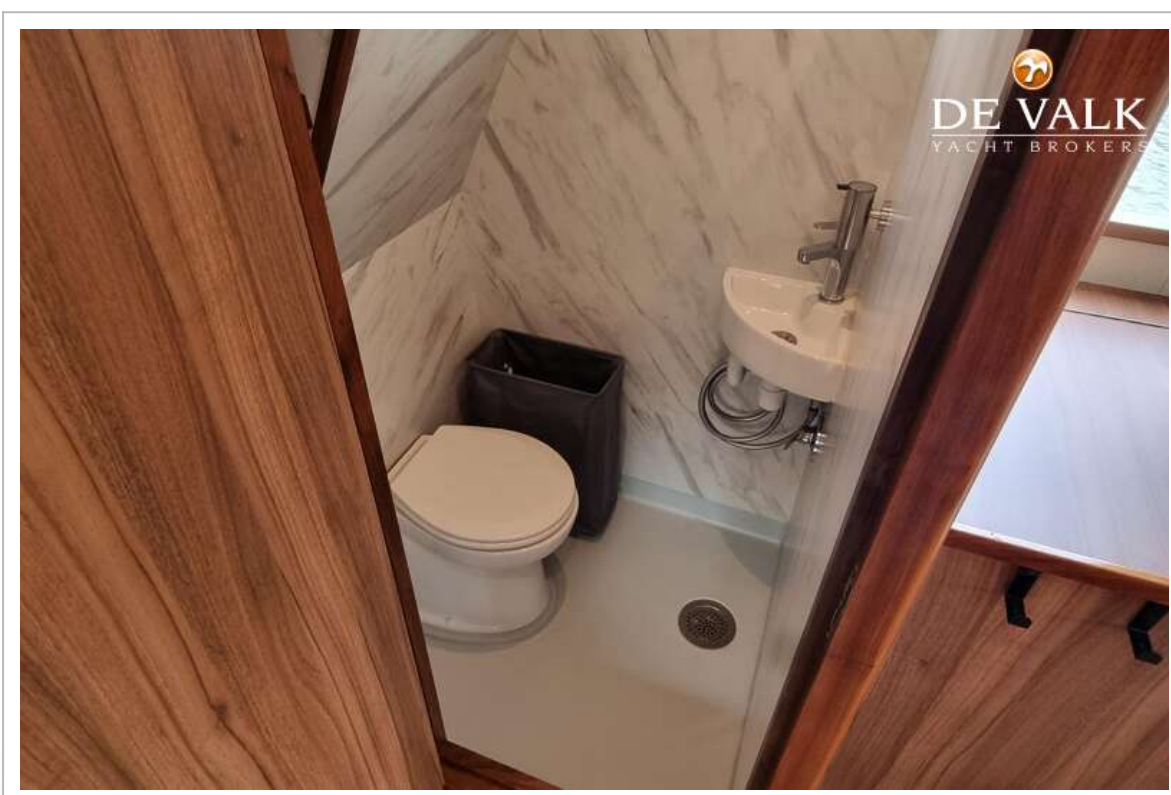
LONG RANGE TRAWLER 42



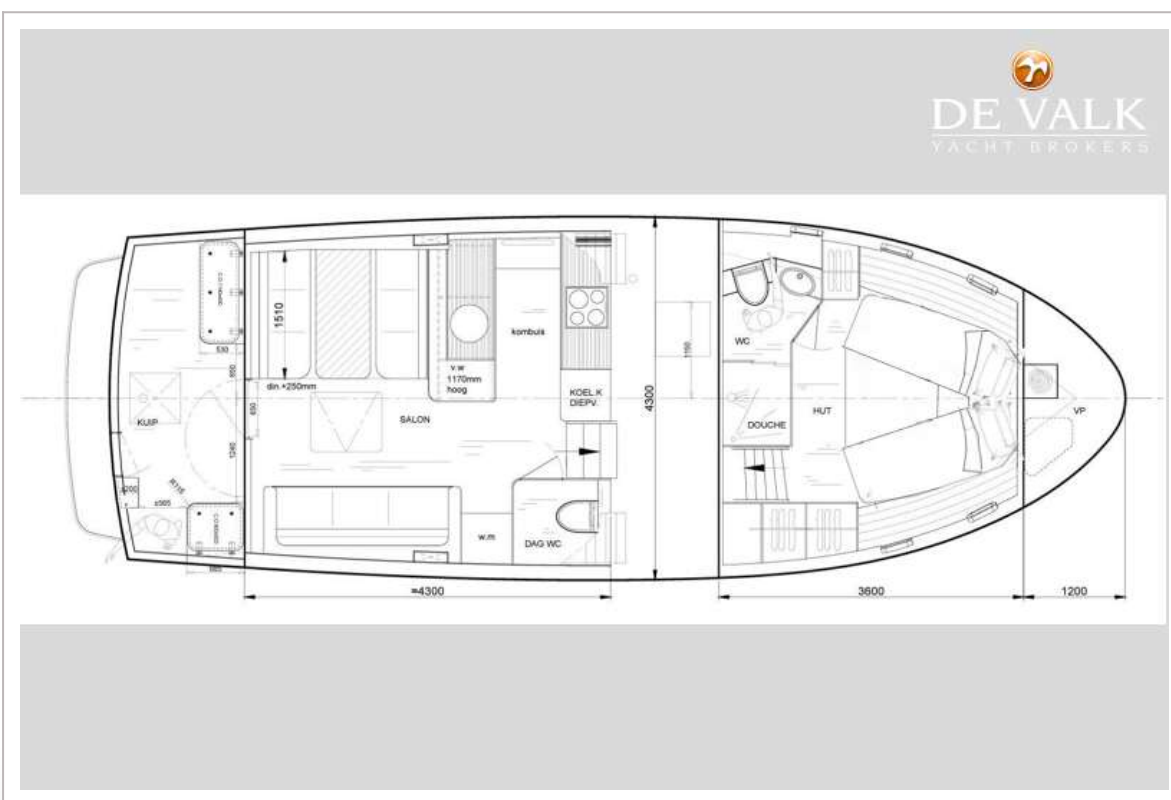
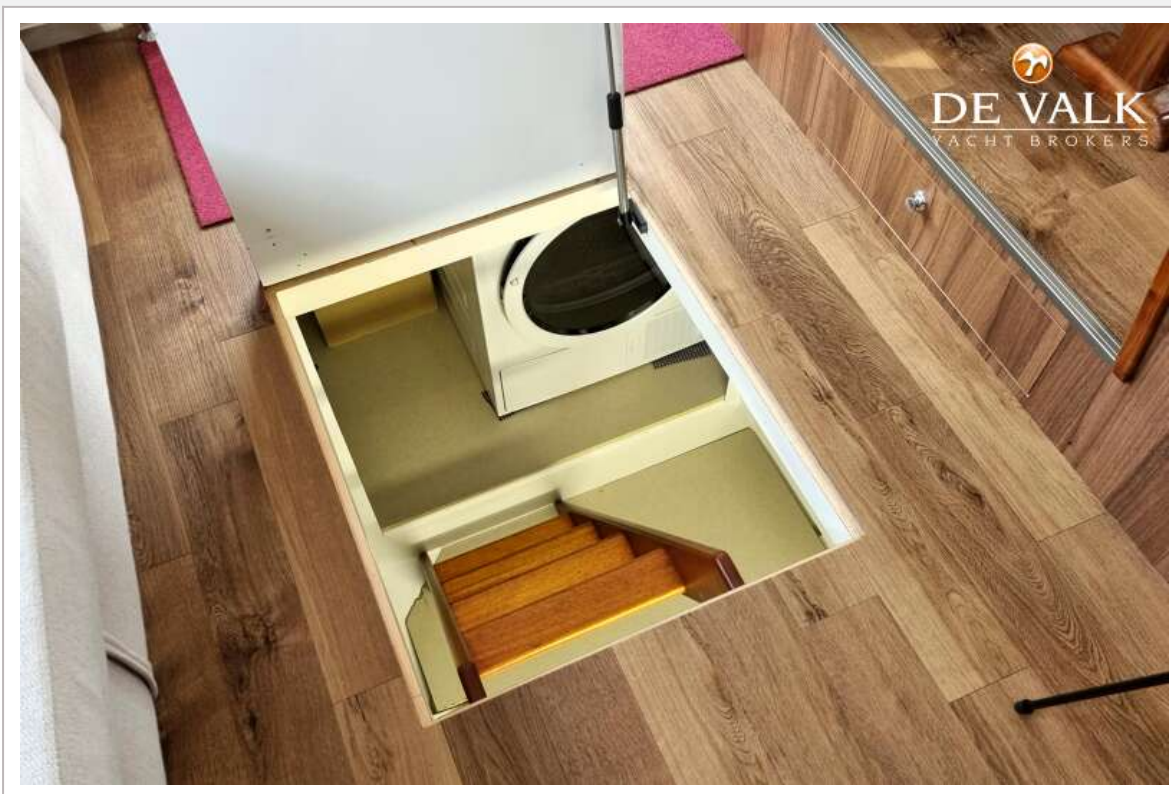
LONG RANGE TRAWLER 42



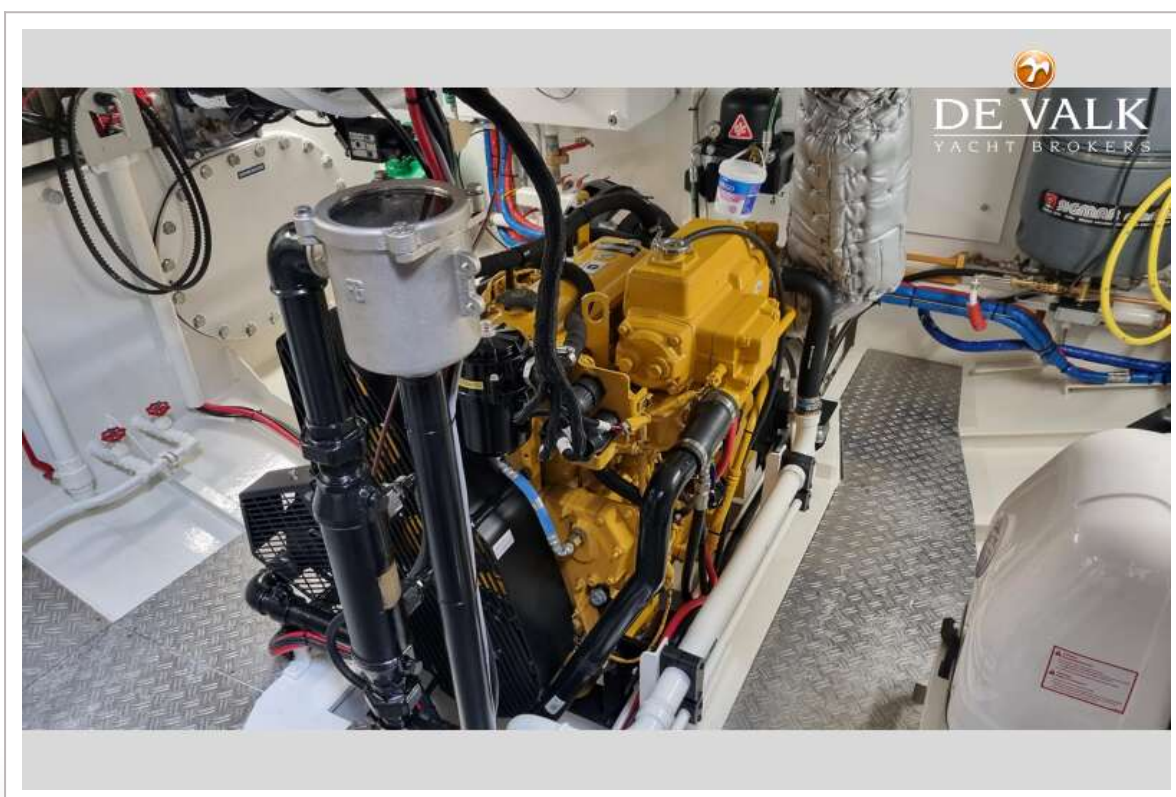
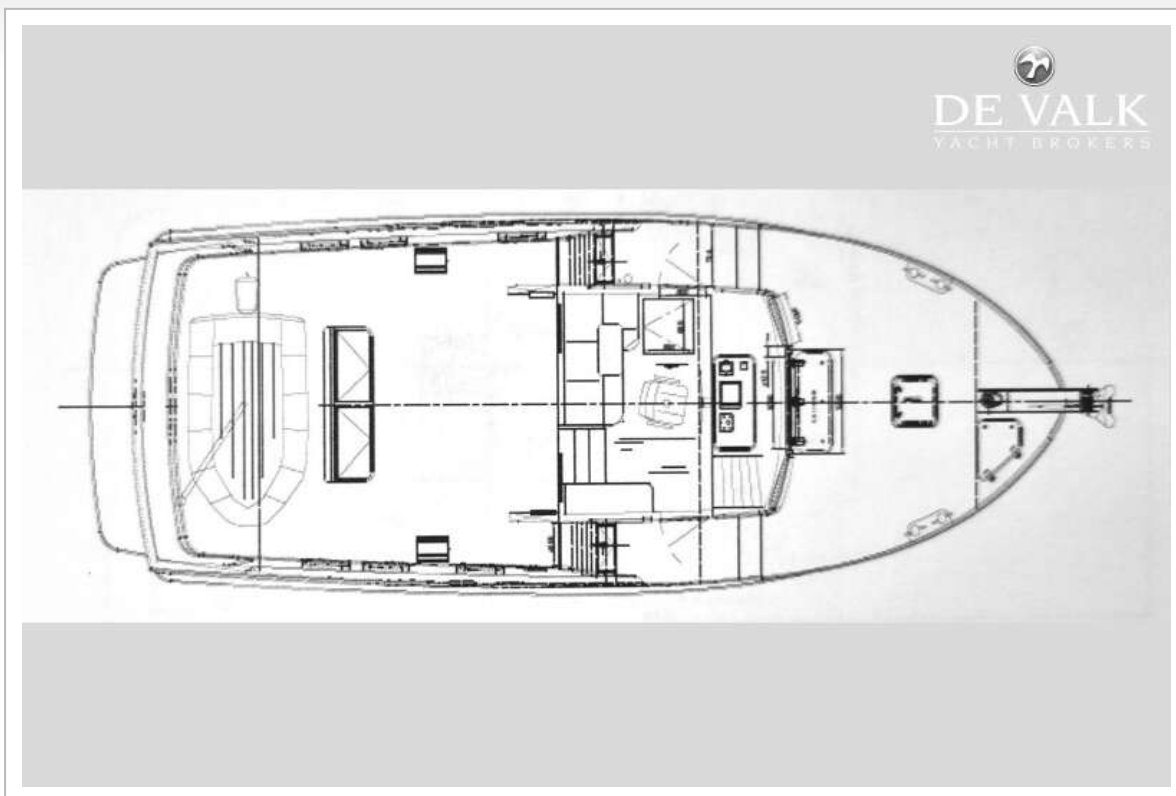
LONG RANGE TRAWLER 42



LONG RANGE TRAWLER 42



LONG RANGE TRAWLER 42



LONG RANGE TRAWLER 42



LONG RANGE TRAWLER 42

