



MULDER SUPER FAVORITE 1070 CABRIO

MULDER SUPER FAVORITE 1070 CABRIO

BROKER'S COMMENTS

Charming Dutch classic Cabrio cruiser from the famous and appreciated Mulder Shipyard. Huge open cockpit with settee (convertible to sun/sleeping bed) for weekend and holiday entertainment. This Super Favorite 1070 Cabrio has been well kept and was used on the inland fresh waterways in the Netherlands. A truly Classic design with elegant sheer lines and wooden superstructure for that extra touch of class and heritage. Good accommodations with ample galley, seating and storage area. The bathroom is fully equipped including the shower. Lots of light and ventilation via portholes and hatches.

Marc Weijenberg

SPECIFICATIONS

Dimensions	10.70 x 3.55 x 0.90 (m)	Builder	Jachtwerf Mulder
Built	1996	Cabins	1
Material	Steel	Berths	4
Engine(s)	1 x Yanmar 4JH2-DTE diesel	Hp/Kw	88.00 (hp), 64.68 (kw)
Asking price	sold (VAT)	Lying	contact sales office

CONTACT

Sales office	De Valk Sint Annaland B.V.	Telephone	+31 (0)166 601 000
Address	Koelhuisweg 4 4697 RM Sint Annaland NL	E-mail	sintannaland@devalk.nl

DISCLAIMER

These particulars are given in good faith as supplied but cannot be guaranteed.



MULDER SUPER FAVORITE 1070 CABRIO

GENERAL

Model	MULDER SUPER FAVORITE 1070 CABRIO
Type	motor yacht
LOA (m)	10,70
Beam (m)	3,55
Draft (m)	0,90
Air draft (m)	2,35
Headroom (m)	1,92
Year built	1996
Builder	Jachtwerf Mulder
Country	The Netherlands
Designer	Guido de Groot Design
Displacement (t)	8
CE norm	NA
Hull material	steel
Hull colour	white
Hull shape	hard chine
Superstructure material	mahogany
Deck material	steel
Deck finish	non-skid paint
Cockpit deck finish	teak
Antifouling (year)	2020
Window frame	aluminium
Window material	tempered glass
Deckhatch	yes
Portholes	
Insulation	rockwool
Mast can be lowered	manual
Fuel tank (litre)	polyethylene 400
Freshwater tank (litre)	polyethylene 400
Wheel steering	hydraulic



MULDER SUPER FAVORITE 1070 CABRIO

Extra info

Large open cockpit with big sunbed (2,30 x 1,65)

ACCOMMODATION

Cabins	1
Berths	4
Interior	mahogany
Floor	carpet
Open cockpit	With teak-holly floor
Saloon	yes
Headroom saloon (m)	1,92
Heating	diesel ducted hot air Eberspacher D3L
Dinette to convert into berth	(2,00 x 1,25)
Convertible berth	In cockpit / annex sunbed
Opening door to cockpit	yes
Galley	yes
Countertop	
Sink	stainless steel
Cooker	3 flame Gimeg
Fridge	Electrolux 12v/220v/gas
Hot water system	by engine 55 ltr Vetus
Water pressure system	electrical
Owners cabin	v-bed
Bed length (m)	2,00 x 0,75 + fill-in piece
Wardrobe	hanging and drawers
Bathroom	shared I
Toilet	shared
Toilet system	manual
Wash basin	in the bathroom
Shower	
Extra info	Cosy interior done in handcrafted Mahogany.



MULDER SUPER FAVORITE 1070 CABRIO

MACHINERY

No of engines	1
Make	Yanmar
Type	4JH2-DTE
HP	88
kW	64,68
Fuel	diesel
Year installed	1996
Maximum speed (kn)	7,5
Cruising speed (kn)	6
Consumption (l/hr)	4
Engine hours	1425
Engine cooling system	freshwater heat exchanger
Drive	shaft
Shaft seal	Volvo Seal
Engine controls	bowden cable
Gearbox	mechanical Hurth HSW
Bowthruster	electric Vetus 50kgf/5hp
Exhaust	watercooled
Propeller type	fixed
Propeller blades	3
Propeller shaft material	stainless steel
Shaft lubrication	water
Manual bilge pump	yes
Electrical installation	12v/220v
Start battery	1 x 140amp
Service battery	1 x 140amp
Bowthruster battery	2 x 100amp
Battery charger/inverter	Mastervolt Combi 12v/1200watt/50amp
Shorepower	with cable



MULDER SUPER FAVORITE 1070 CABRIO

NAVIGATION

Depth sounder	Vetus Combi-3
VHF handheld	yes
Rudder angle indicator	yes
Plotter/GPS	Raymarine Axiom7(2020)
AIS receiver	yes
Navigation lights	yes

EQUIPMENT

Fixed windscreen	With Mahogany trim
Sprayhood	yes
Cockpit cover	Annex Bimini
Cockpit cushions	yes
Cockpit table	yes
Bathing platform	yes
Boarding ladder	stainless steel
Deck shower	Hot+cold
Anchor	Fortress
Anchor chain	Chain-line
Sea railing	stainless steel
Pulpit	yes
Lifejackets	yes
Wiper	3 x
Fenders	yes
Mooring lines	yes
Radio-cd player	yes
Cockpit speakers	yes
Extra info	2 x helm-seat



MULDER SUPER FAVORITE 1070 CABRIO



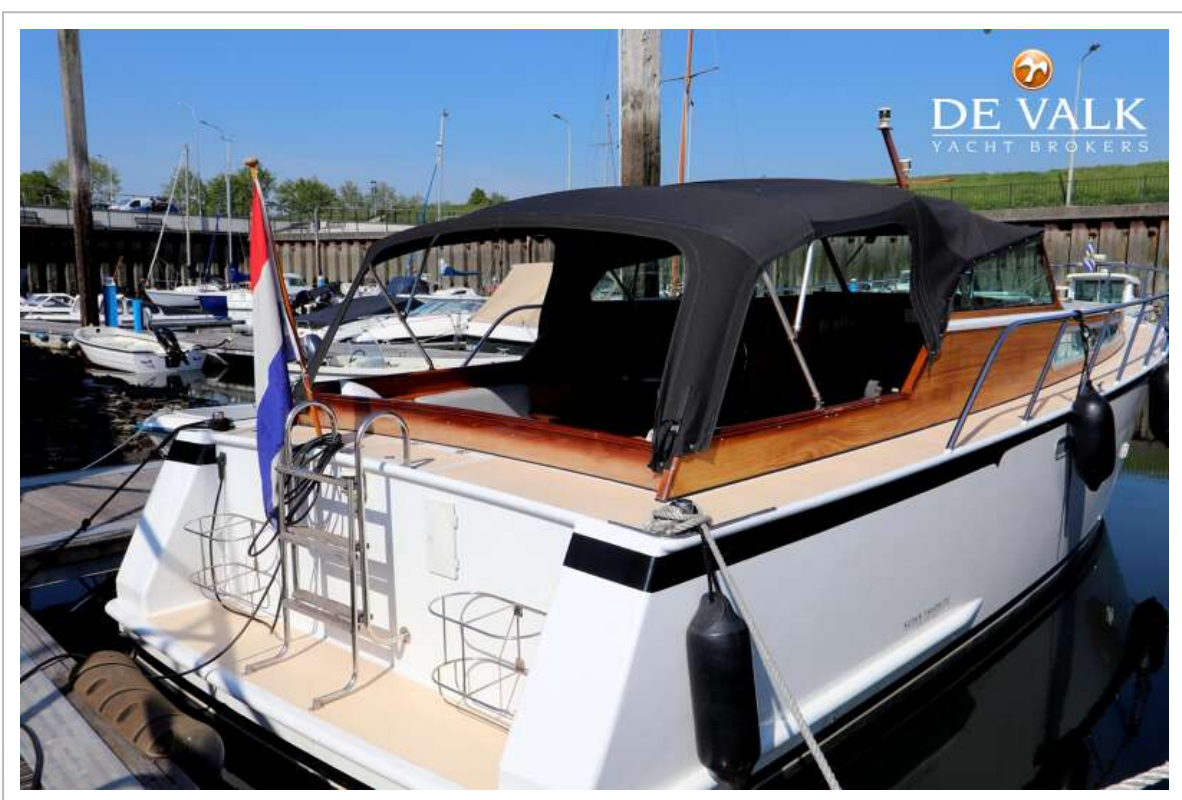
MULDER SUPER FAVORITE 1070 CABRIO



MULDER SUPER FAVORITE 1070 CABRIO



MULDER SUPER FAVORITE 1070 CABRIO



MULDER SUPER FAVORITE 1070 CABRIO



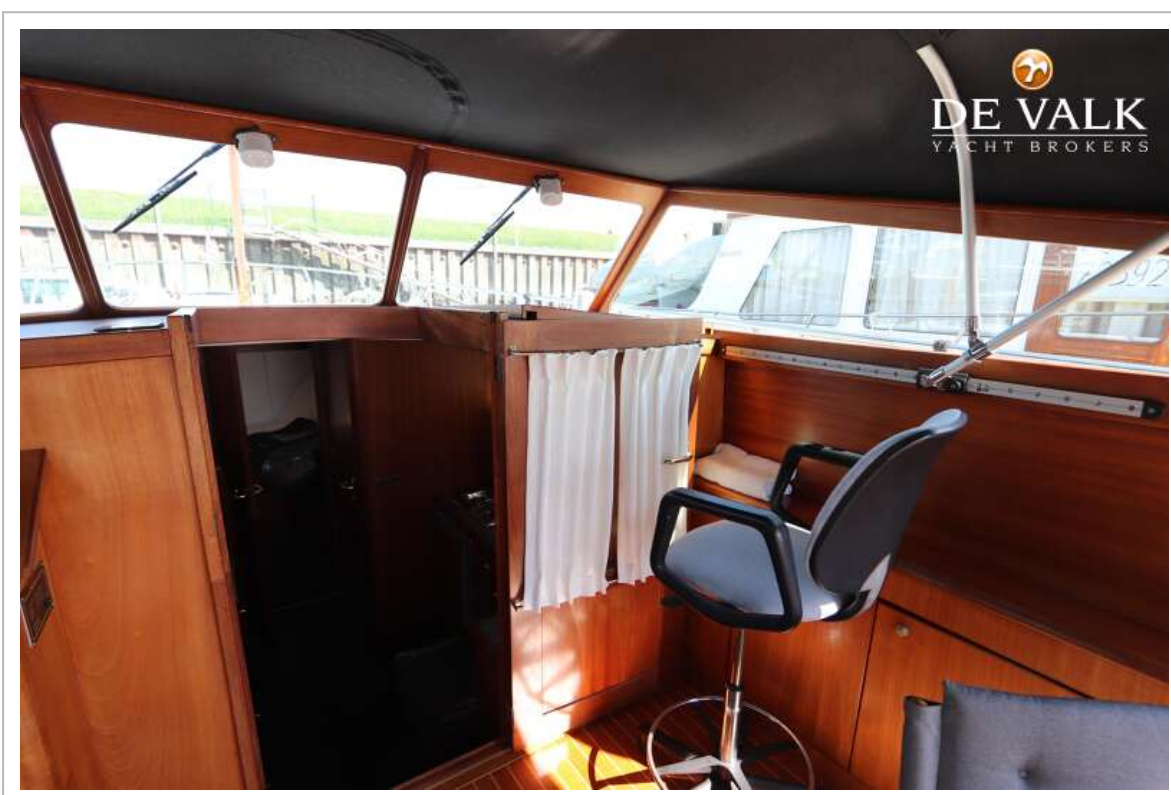
MULDER SUPER FAVORITE 1070 CABRIO



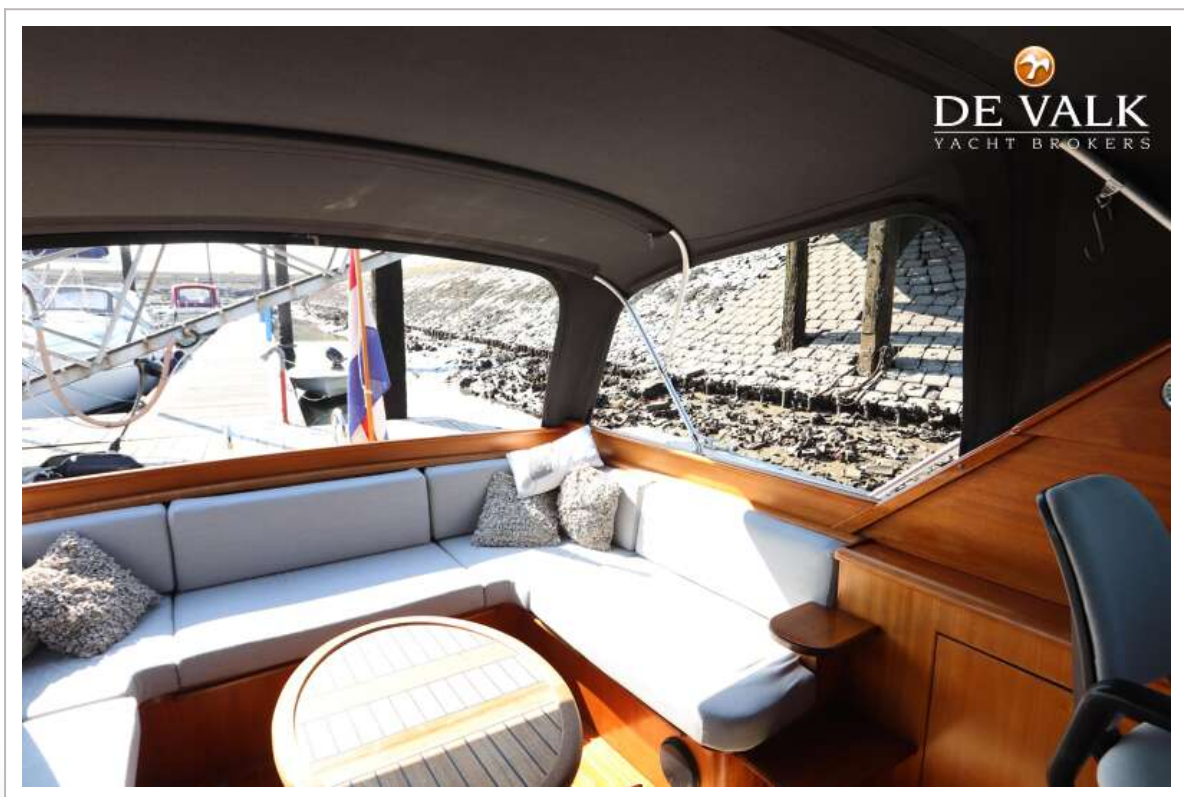
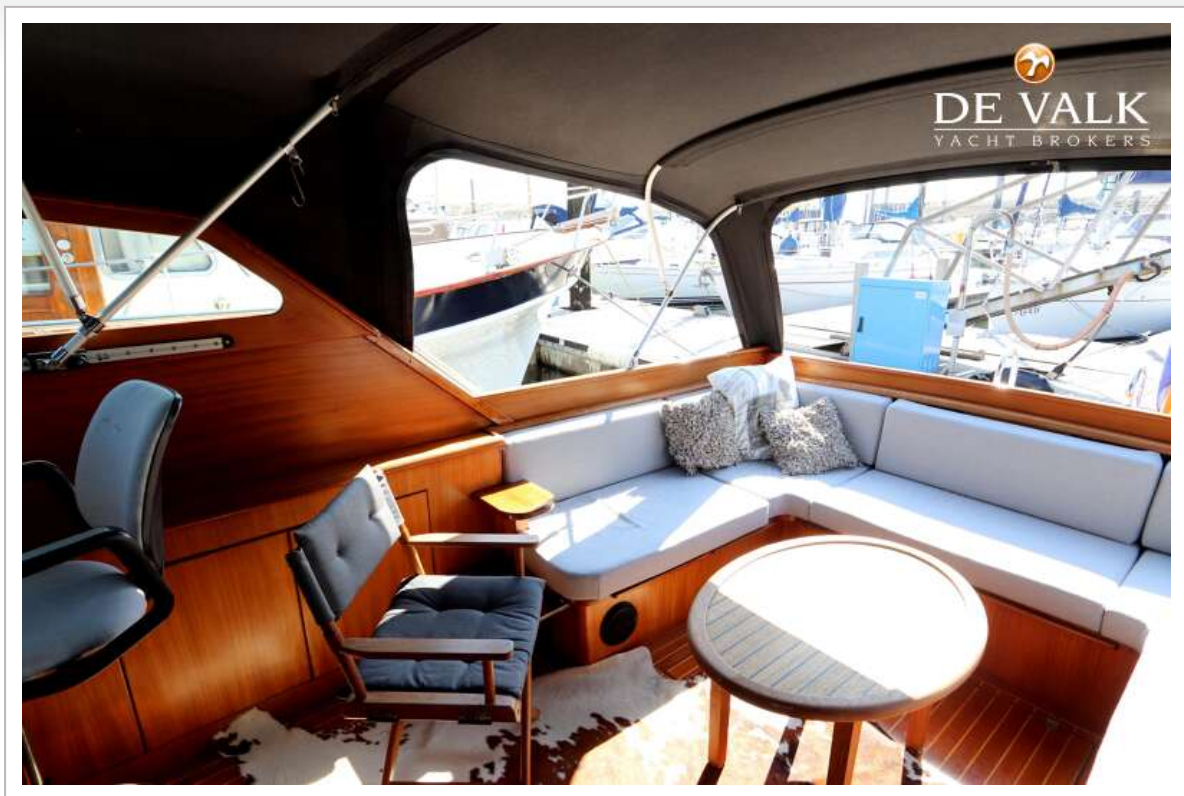
MULDER SUPER FAVORITE 1070 CABRIO



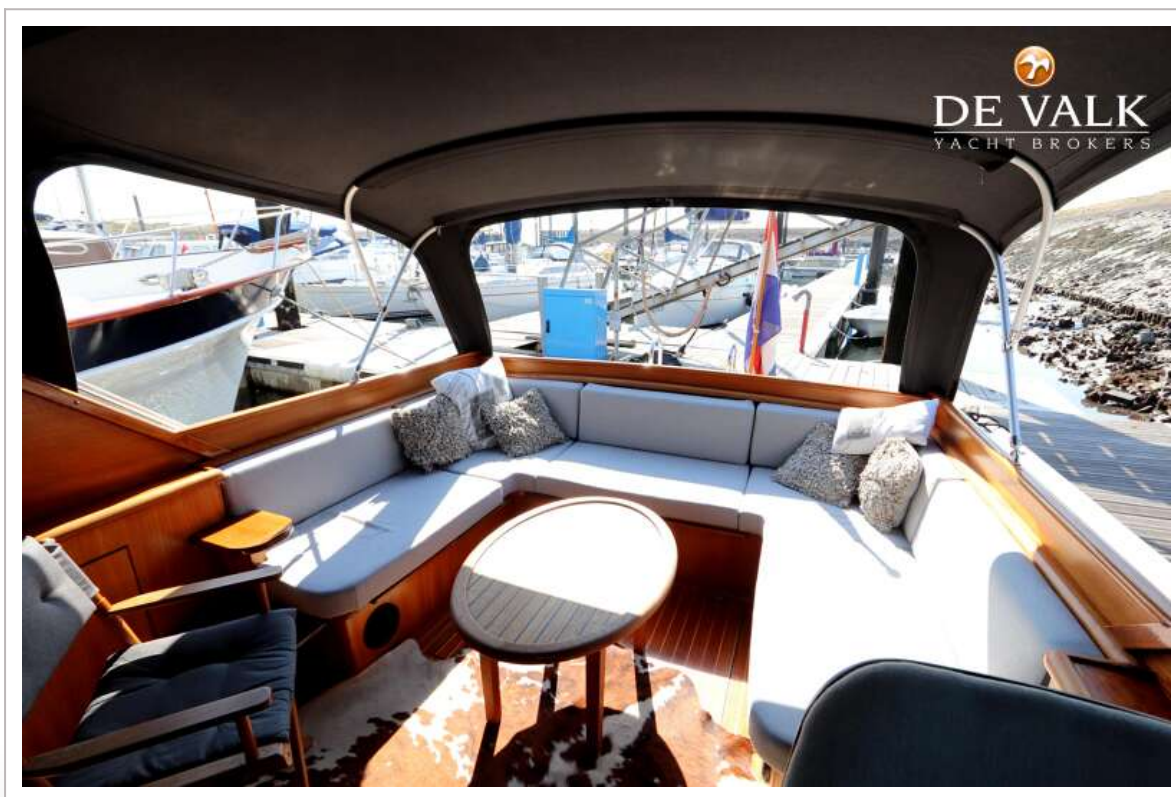
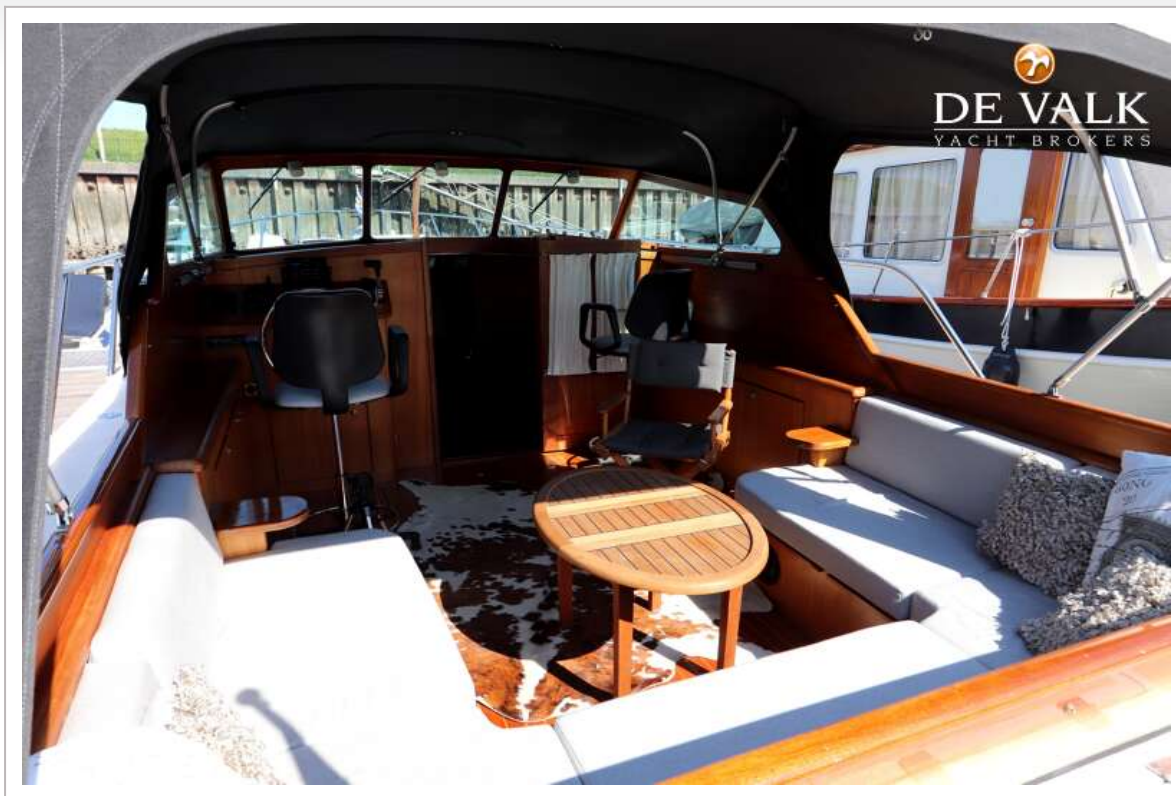
MULDER SUPER FAVORITE 1070 CABRIO



MULDER SUPER FAVORITE 1070 CABRIO



MULDER SUPER FAVORITE 1070 CABRIO



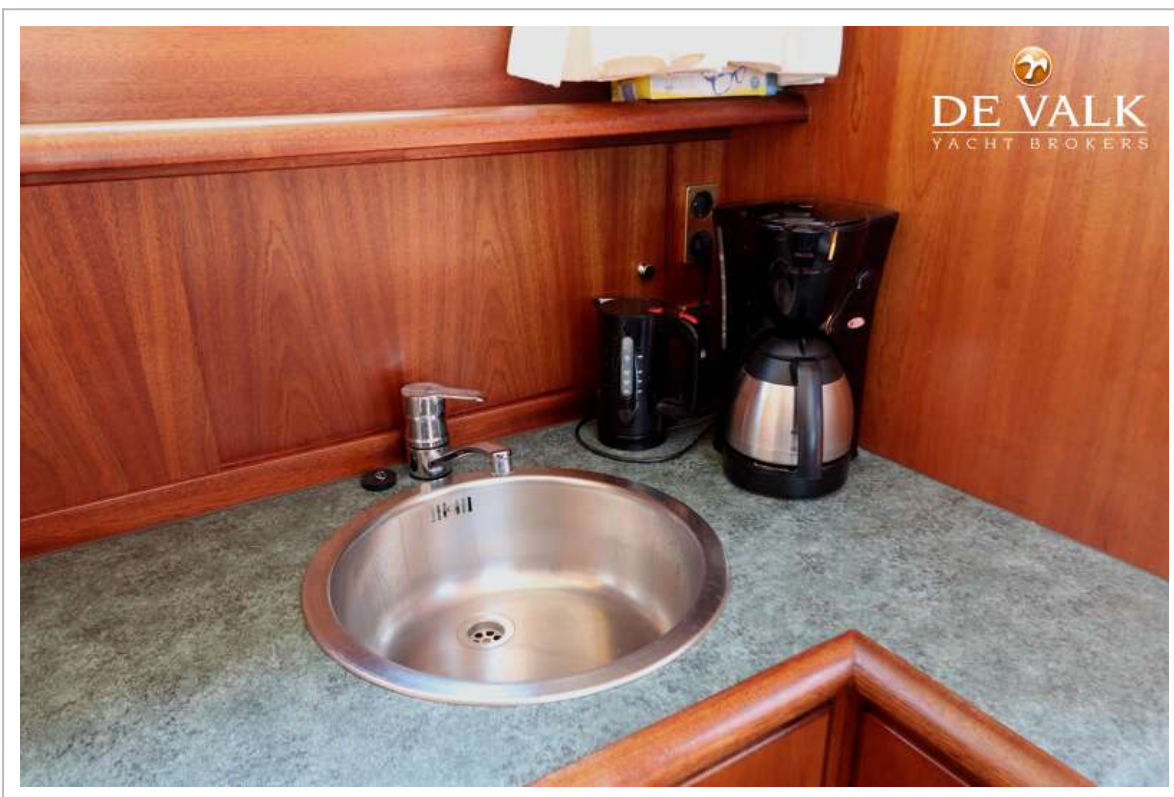
MULDER SUPER FAVORITE 1070 CABRIO



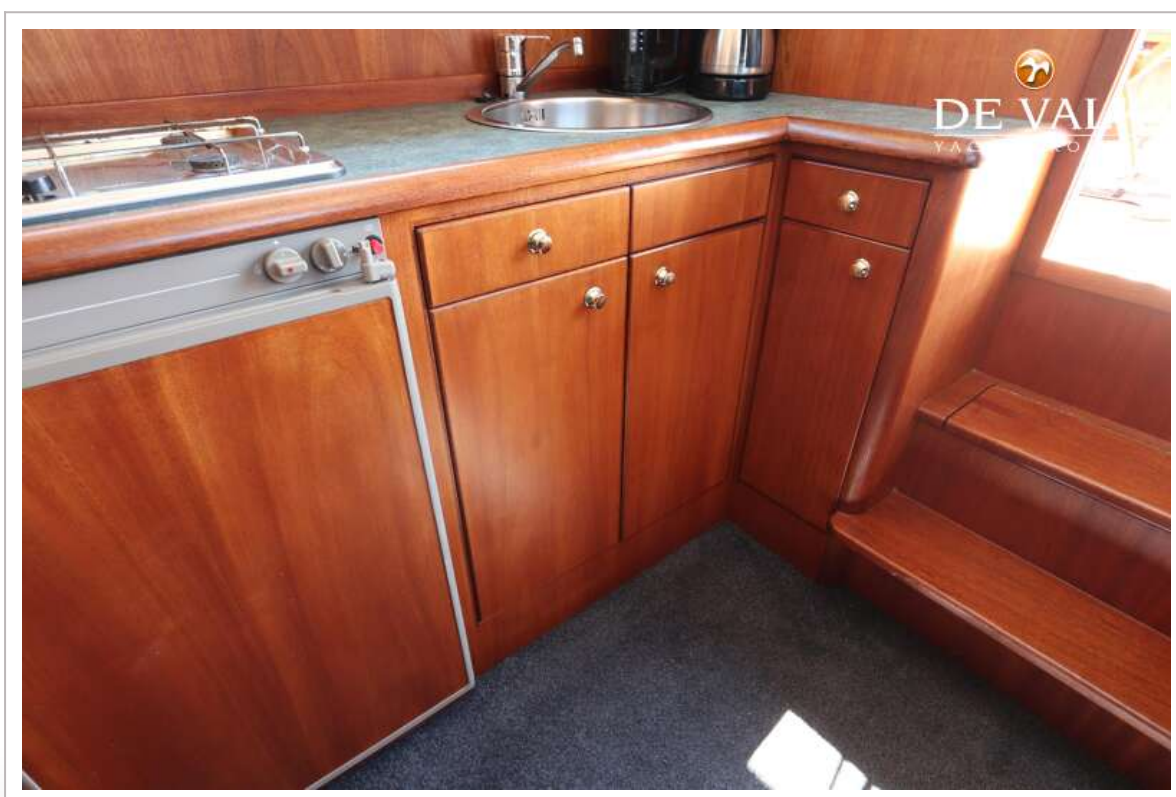
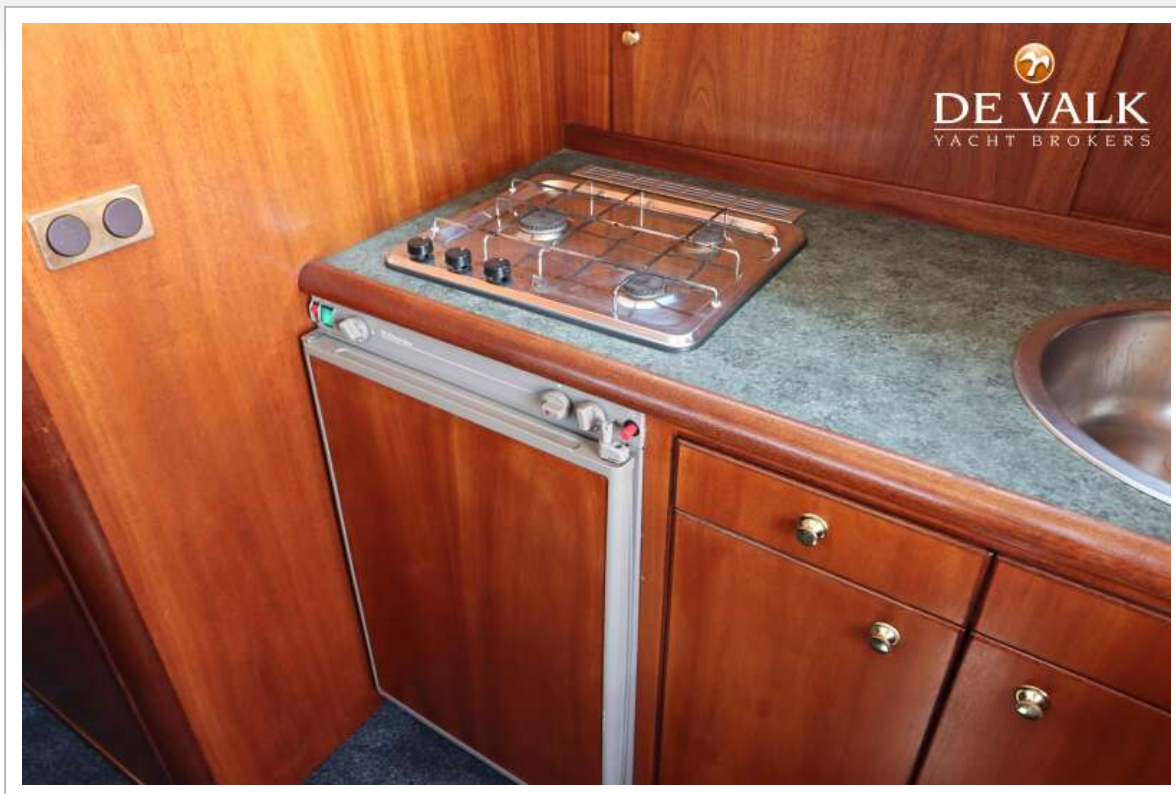
MULDER SUPER FAVORITE 1070 CABRIO



MULDER SUPER FAVORITE 1070 CABRIO



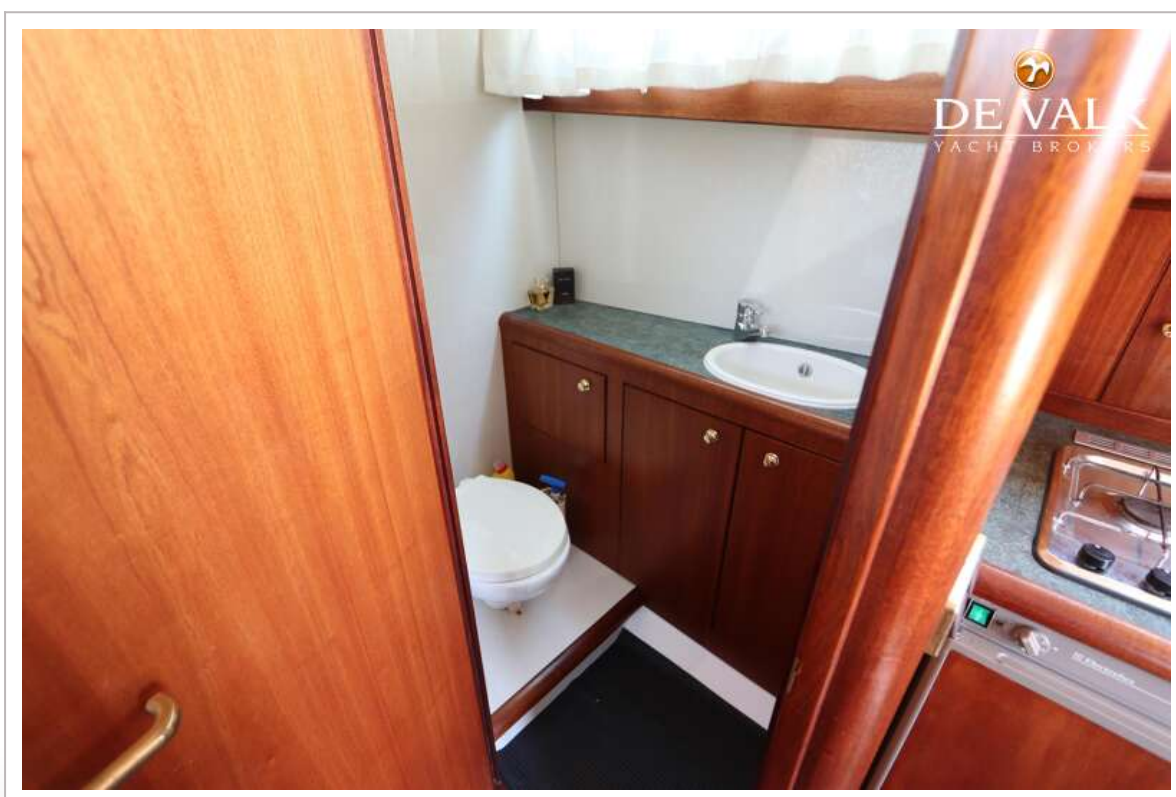
MULDER SUPER FAVORITE 1070 CABRIO



MULDER SUPER FAVORITE 1070 CABRIO



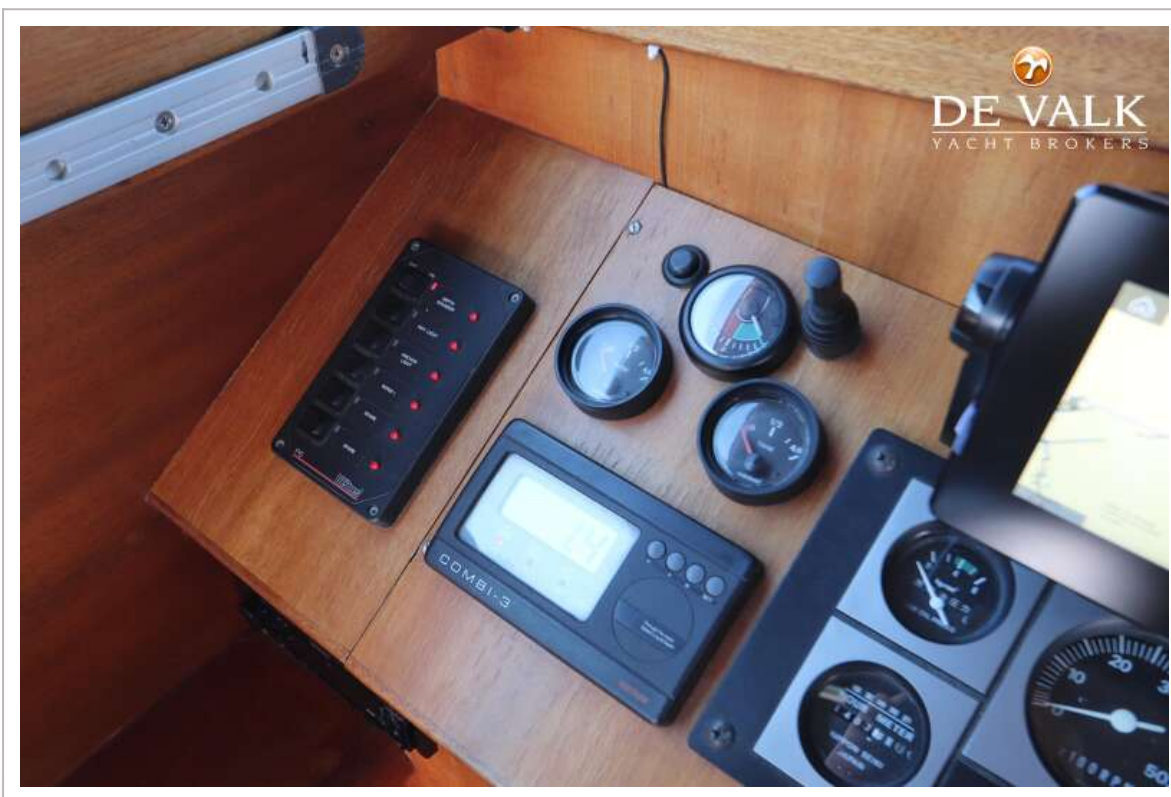
MULDER SUPER FAVORITE 1070 CABRIO



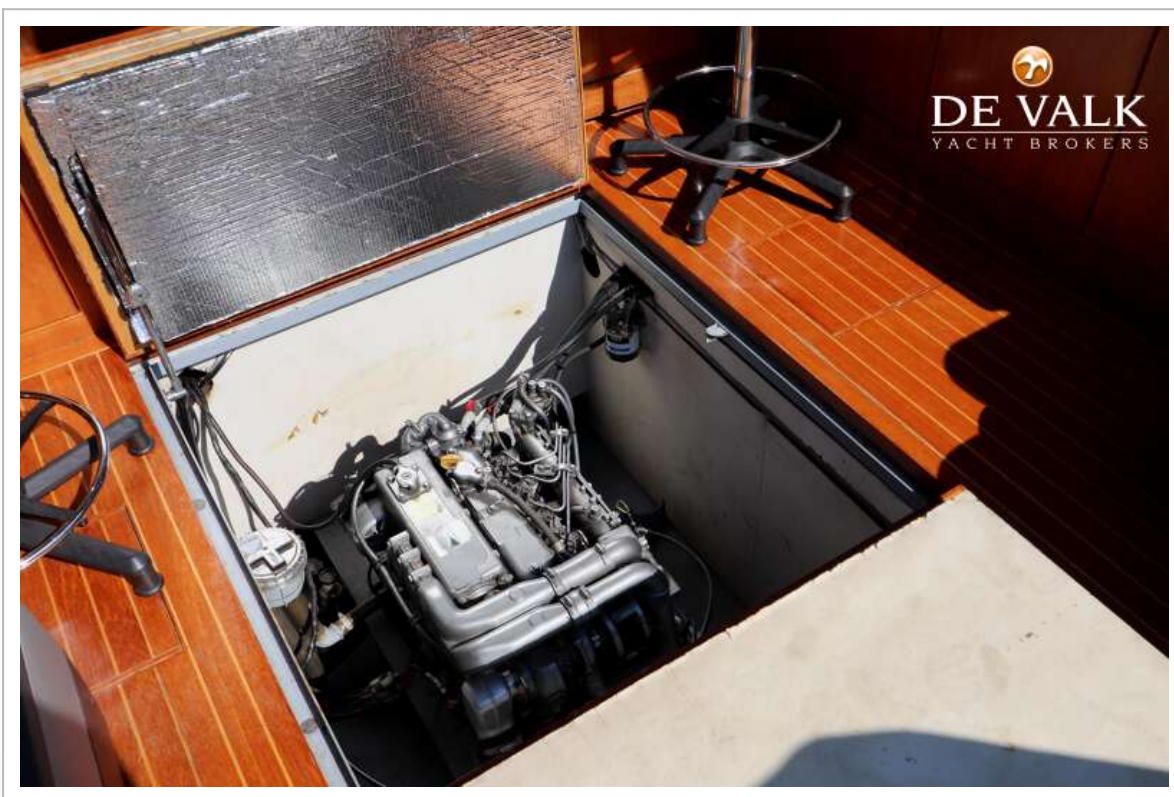
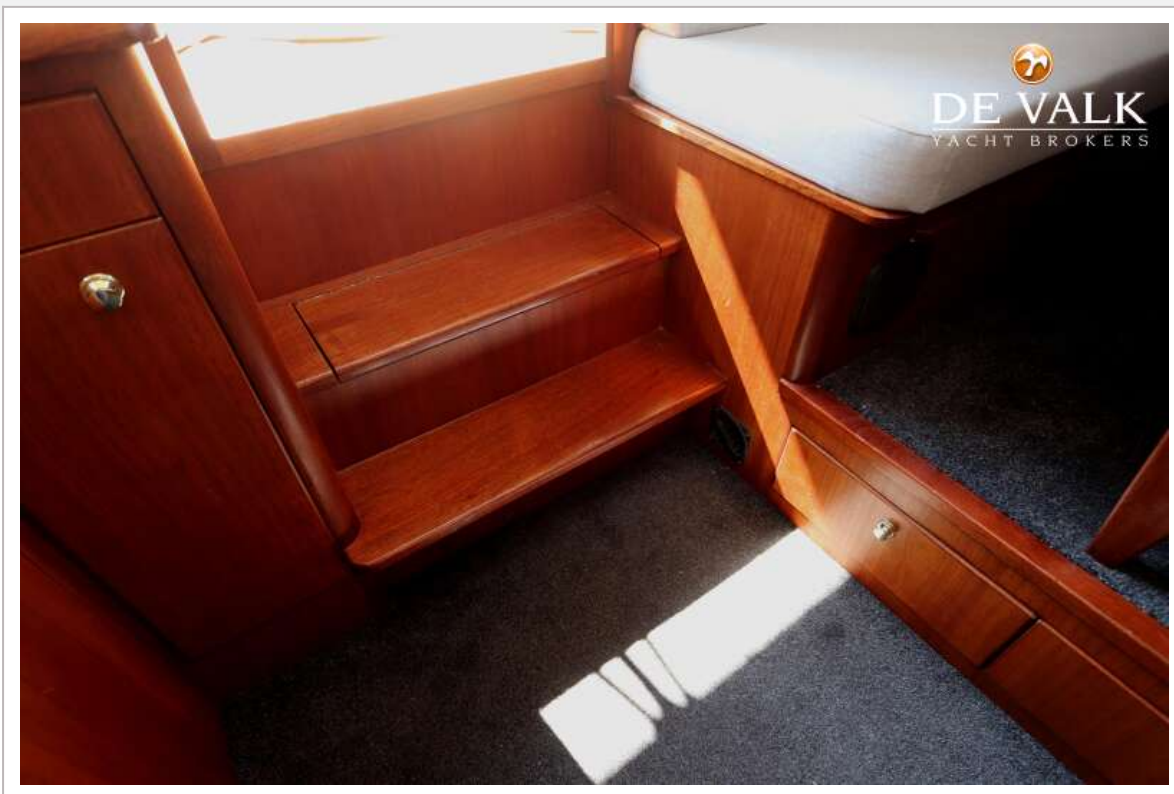
MULDER SUPER FAVORITE 1070 CABRIO



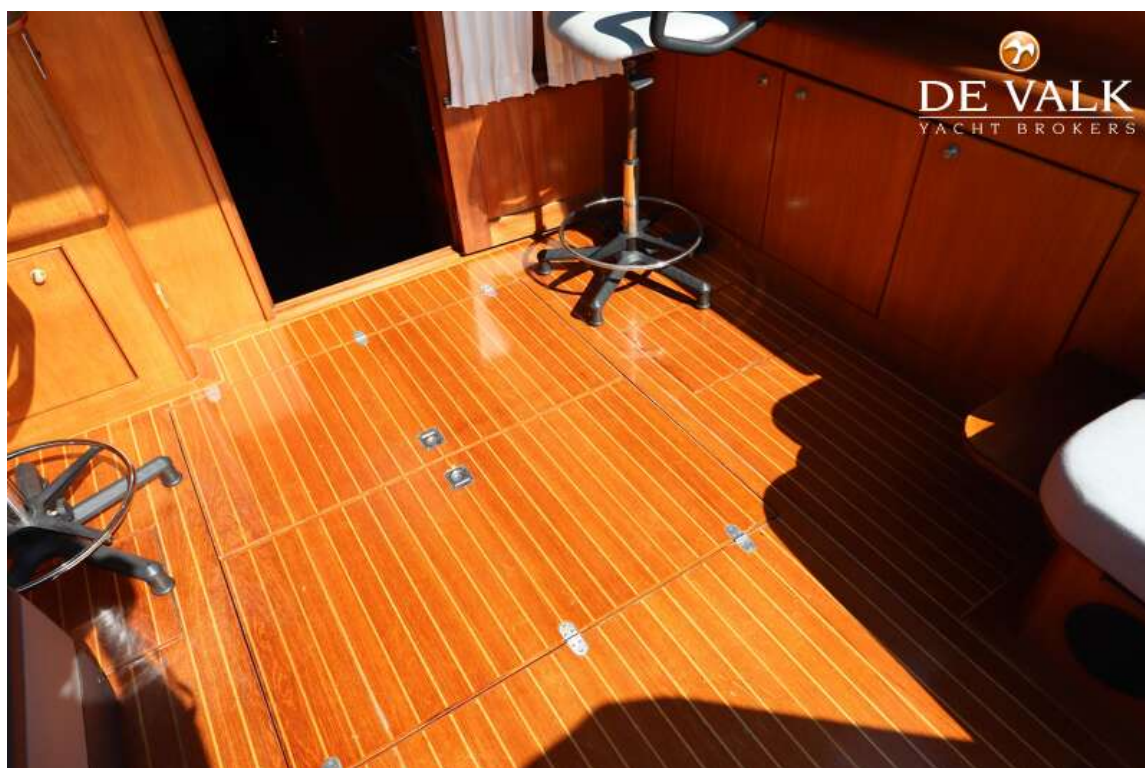
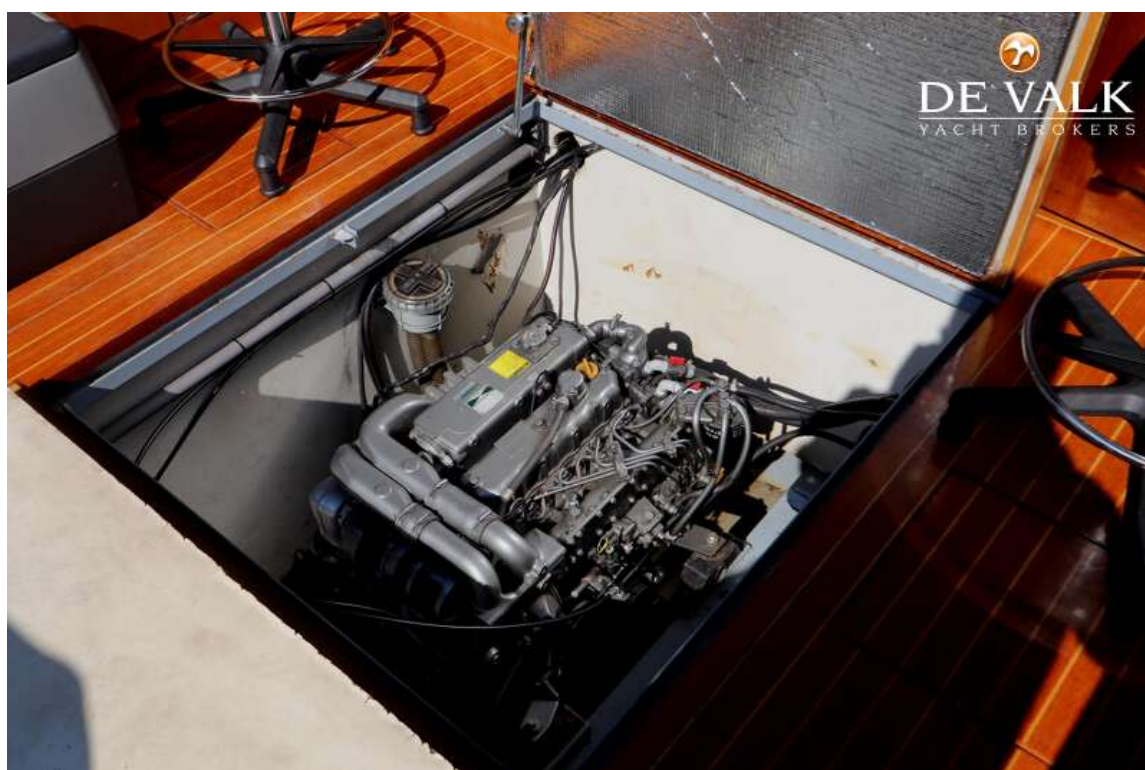
MULDER SUPER FAVORITE 1070 CABRIO



MULDER SUPER FAVORITE 1070 CABRIO



MULDER SUPER FAVORITE 1070 CABRIO



MULDER SUPER FAVORITE 1070 CABRIO



MULDER SUPER FAVORITE 1070 CABRIO

