



DUFOUR 385 GRAND LARGE



DUFOUR 385 GRAND LARGE

BROKER'S COMMENTS

This Dufour 385 Grand'large from 2006 has only been used by her first and current owner. With her relatively shallow keel of 1,76m you can pretty much use her anywhere and the 3 comfortable cabins can be enjoyed by you and your family and/or guests. This very well maintained Dufour Grand large is the limited edition version, which means that she is equipped with a lot of extras.. Now to be admired and inspected in Hindeloopen 7 days a week.

Johan Nooitgedagt

SPECIFICATIONS

Dimensions	11.72 x 3.93 x 1.76 (m)	Builder	Dufour Yachts SA
Built	2006	Cabins	3
Material	GRP	Berths	7
Engine(s)	1 x Volvo Penta D2-40 diesel	Hp/Kw	40.00 (hp), 29.40 (kw)
Asking price	sold (VAT)	Lying	contact Hindeloopen

CONTACT

Sales office	De Valk Hindeloopen B.V.	Telephone	+31 514 52 40 00
Address	Oosterstrand 1 8713 JS Hindeloopen NL	E-mail	hindeloopen@devalk.nl

DISCLAIMER

These particulars are given in good faith as supplied but cannot be guaranteed.



DUFOUR 385 GRAND LARGE

GENERAL

Model	DUFOUR 385 GRAND LARGE
Type	sailing yacht
LOA (m)	11,72
LWL (m)	9,84
Beam (m)	3,93
Draft (m)	1,76
Air draft (m)	16,50
Headroom (m)	1,98
Year built	2006
Builder	Dufour Yachts SA
Country	France
Designer	Umberto Felci / Patrick Roséo
Displacement (t)	6,98
Ballast (tonnes)	cast iron 1,95
CE norm	A
Hull material	GRP
Hull colour	white
Hull shape	round-bilged
Keel type	fin keel with bulb
Superstructure material	GRP
Rubbing strake	rubber
Deck material	GRP
Deck finish	non-skid moulded in
Superstructure deck finish	non-skid moulded in
Cockpit deck finish	teak
Antifouling (year)	yes
Window frame	aluminium
Window material	polycarbonate
Portholes	aluminium
Fuel tank (litre)	polyethylene 160



DUFOUR 385 GRAND LARGE

Freshwater tank (litre)	polyethylene 320
Blackwater tank (litre)	polyethylene
Blackwater tank extraction	deck extraction + uw line
Wheel steering	cable steering 2 x Whitlock
Emergency tiller	yes

ACCOMMODATION

Cabins	3
Berths	7
Interior	mahogany
Floor	teak and holly
Open cockpit	yes
Saloon	yes
Headroom saloon (m)	1,98
Heating	diesel ducted hot air Webasto
Navigation center	yes
Chart table	yes
Dinette	yes
Dinette to convert into berth	yes
Galley	yes
Countertop	plastic
Sink	stainless steel 2 x
Cooker	calor gas Eno
Oven	Eno
Fridge	Isotherm 12V
Hot water system	220V + engine Quick 20 l
Water pressure system	electrical
Owners cabin	double bed Forward
Bed length (m)	2,35 x 1,40
Wardrobe	drawers and shelves
Bathroom	separate



DUFOUR 385 GRAND LARGE

Toilet	shared
Toilet system	manual
Wash basin	in the bathroom
Shower	separate
Guest cabin 1	double bed Port
Wardrobe	drawers and shelves
Guest cabin 2	double bed Starboard
Wardrobe	drawers and shelves

MACHINERY

No of engines	1
Make	Volvo Penta
Type	D2-40
HP	40
kW	29,40
Fuel	diesel
Year installed	2006
Maximum speed (kn)	7
Cruising speed (kn)	6
Consumption (l/hr)	3
Engine cooling system	freshwater heat exchanger
Drive	sail-drive
Engine controls	bowden cable
Gearbox	mechanical
Exhaust	watercooled
Manual bilge pump	yes
Electric bilge pump	yes
Electrical installation	12V & 220V
Batteries	yes
Start battery	yes
Service battery	yes



DUFOUR 385 GRAND LARGE

Battery monitor	yes
Battery charger	yes
Diode battery combiners	yes
Shorepower	with cable

NAVIGATION

Compass	2x Plastimo Olympic 135 on steering pedestal
Depth sounder	Raymarine ST60 Tridata
Depth sounder/log	Raymarine ST60 Tridata
Log	Raymarine ST60 Tridata
Windset	Raymarine ST60+ wind needs repair
Repeater	Raymarine ST60 Graphic inside
VHF	Shipmate RS 8300
VHF handheld	Shipmate
Autopilot	Raymarine ST6002
Rudder angle indicator	Raymarine ST6002
Radar	Raymarine
GPS	Raymarine
Radar/GPS/plotter	Raymarine RL 70 C
Weather receiver	Cresta

EQUIPMENT

Sprayhood with grab rail	yes
Cockpit table	yes
Bathing platform	yes
Boarding ladder	aluminum
Deck shower	Warm & Cold
Anchor	Delta
Anchor chain	yes
Windlass	electrical
Sea railing	stainless steel



DUFOUR 385 GRAND LARGE

Grab rail (superstructure)	stainless steel
Pushpit	yes
Pulpit	yes
Lifebuoy	yes
Radar reflector	yes
Fenders	yes
Mooring lines	yes
Radio-cd player	Kenwood
Cockpit speakers	yes
Speakers in salon	yes
Clock - barometer	yes

RIGGING

Rigging	sloop
Standing rigging	wire
Brand mast	Sparcraft
Material mast	aluminium
Spreaders	2 x
Mainsail	yes
Mainsail cover	yes
Battcars	yes
Genoa	yes
Genoa furler	yes
Genoa cover	yes
Reefing System	quick-one-line-reefing
Boomvang	gasspring
Genoa sheetwinches	2 x Harken ST 44.2
Halyard winches	2 x Harken ST 32.2
Multifunctional winches	halyard/sheet winches



DUFOUR 385 GRAND LARGE



DUFOUR 385 GRAND LARGE



DUFOUR 385 GRAND LARGE



DUFOUR 385 GRAND LARGE



DUFOUR 385 GRAND LARGE



DUFOUR 385 GRAND LARGE



DUFOUR 385 GRAND LARGE



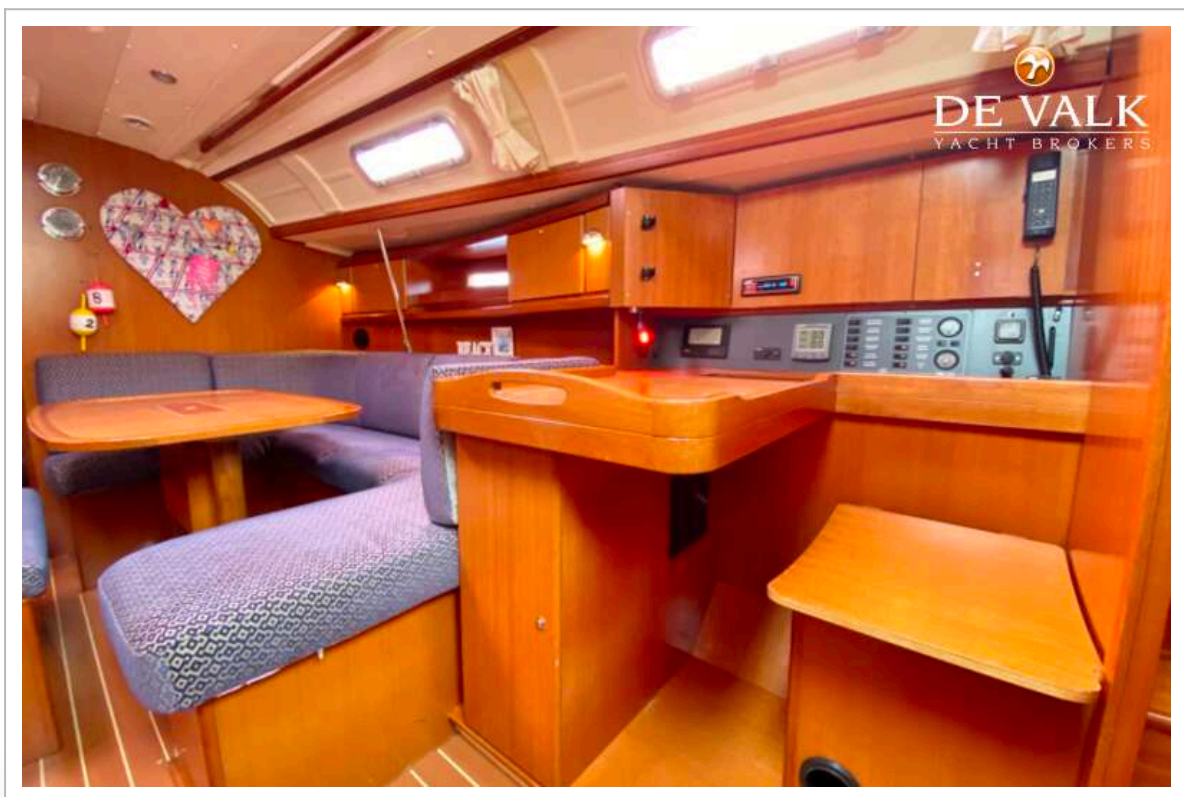
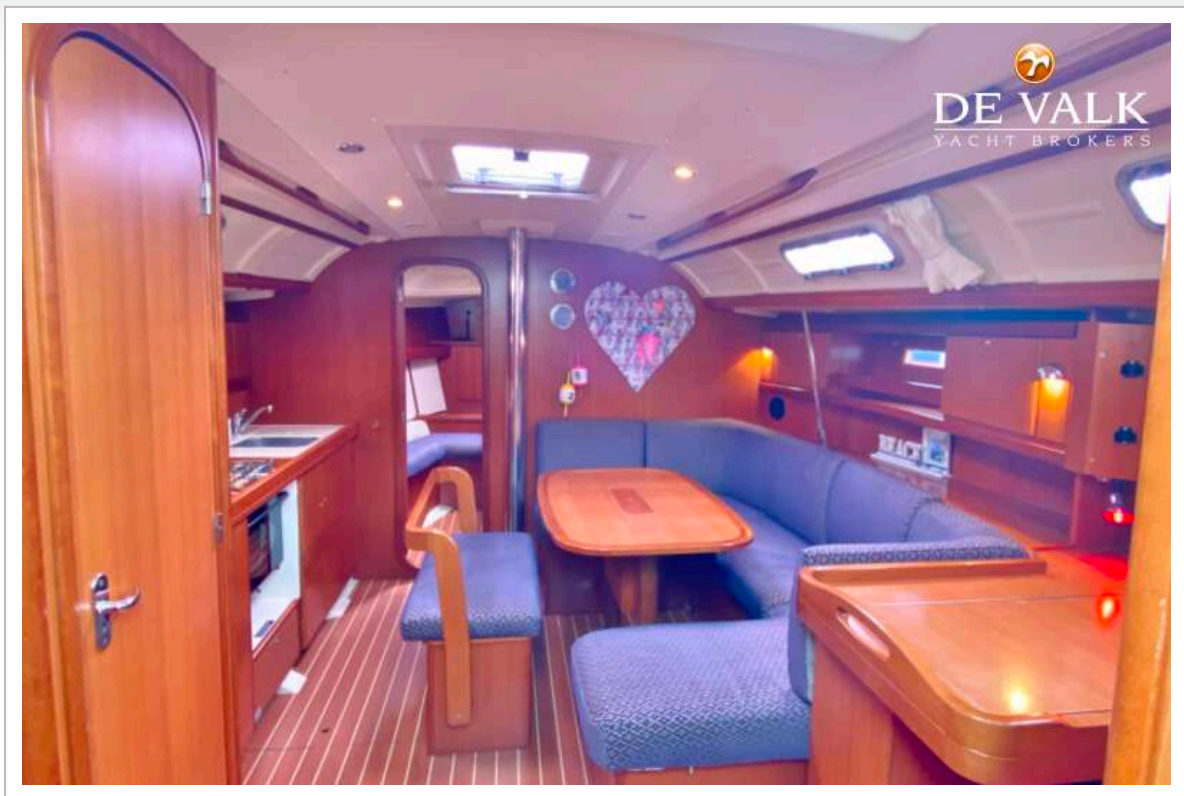
DUFOUR 385 GRAND LARGE



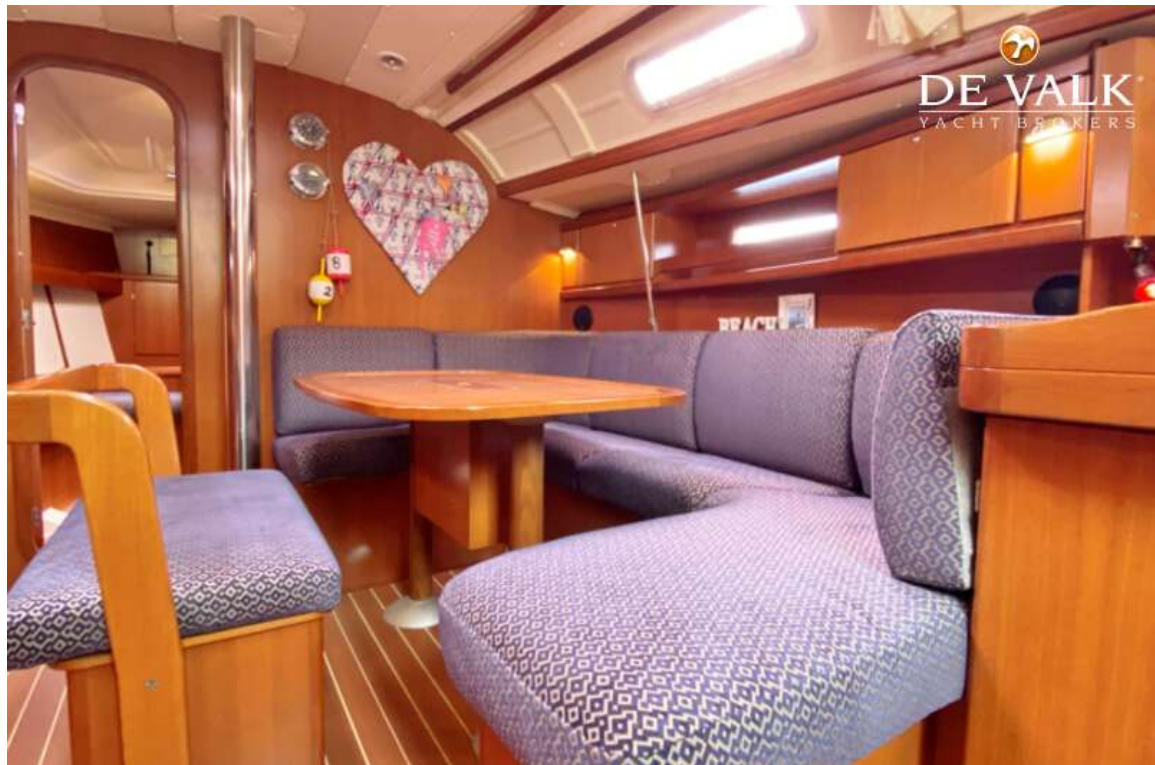
DUFOUR 385 GRAND LARGE



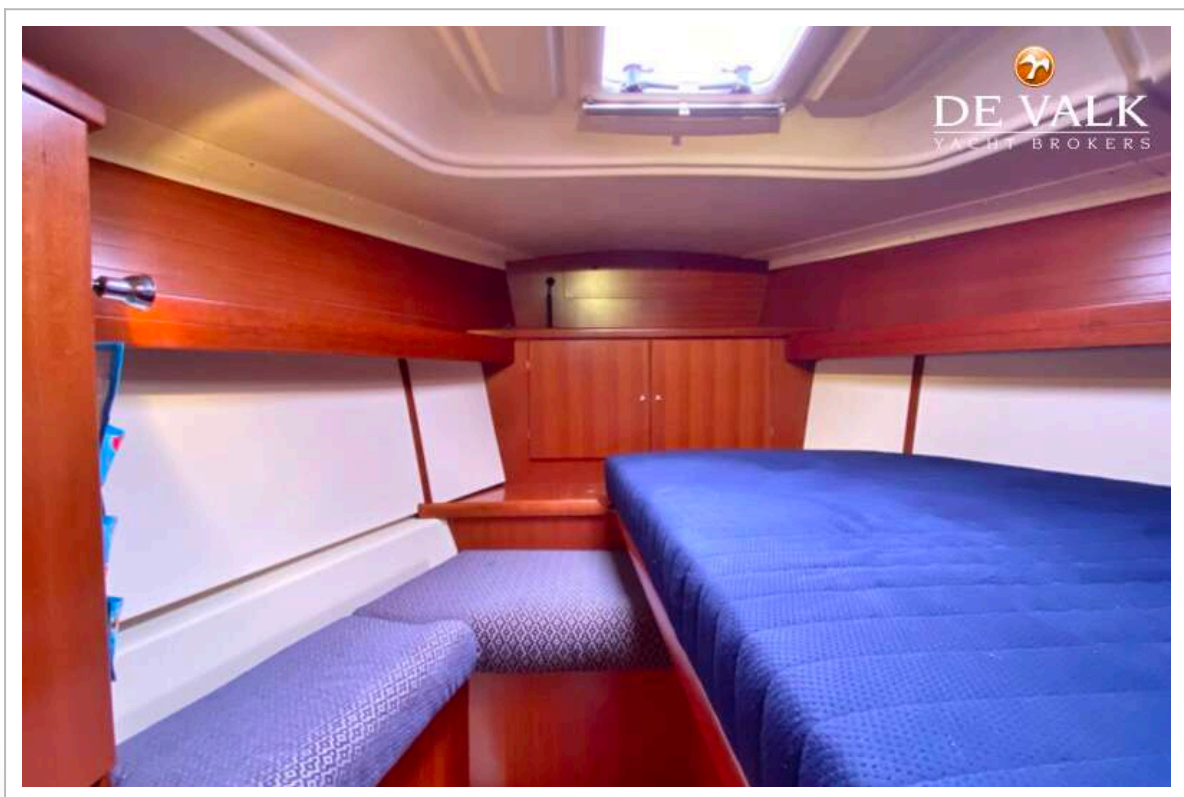
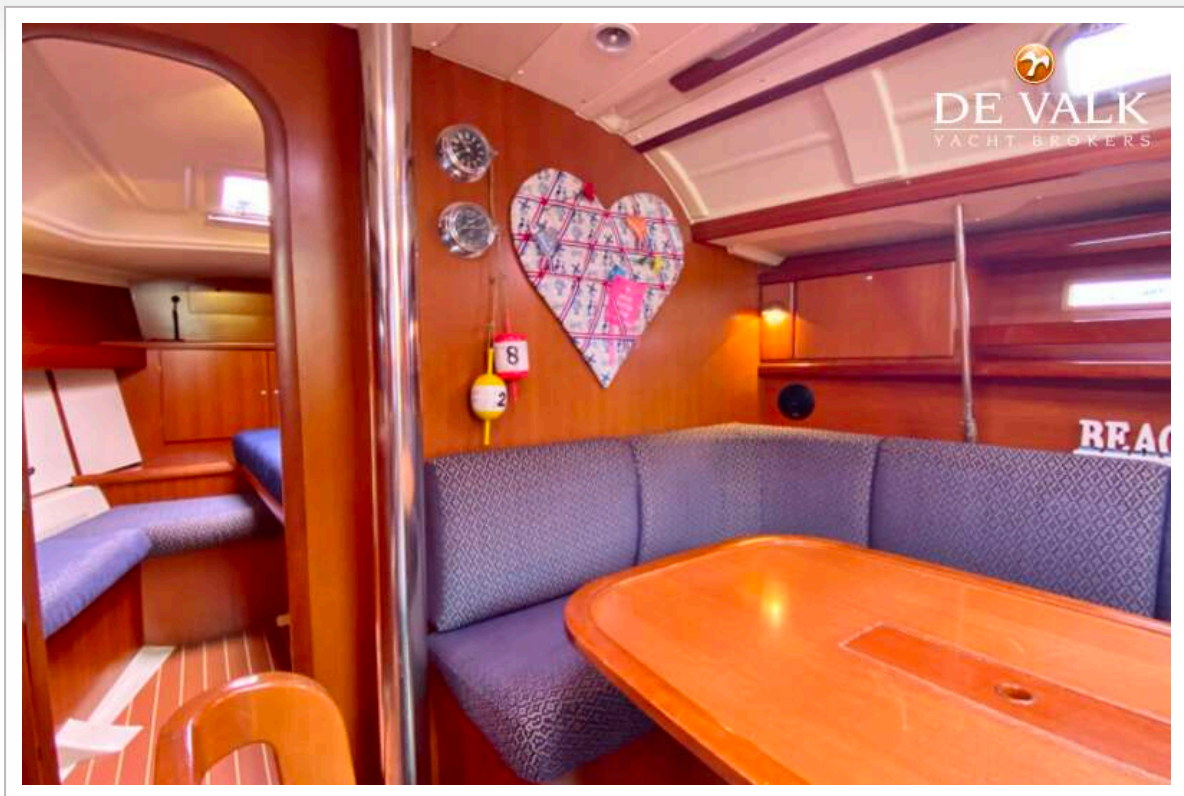
DUFOUR 385 GRAND LARGE



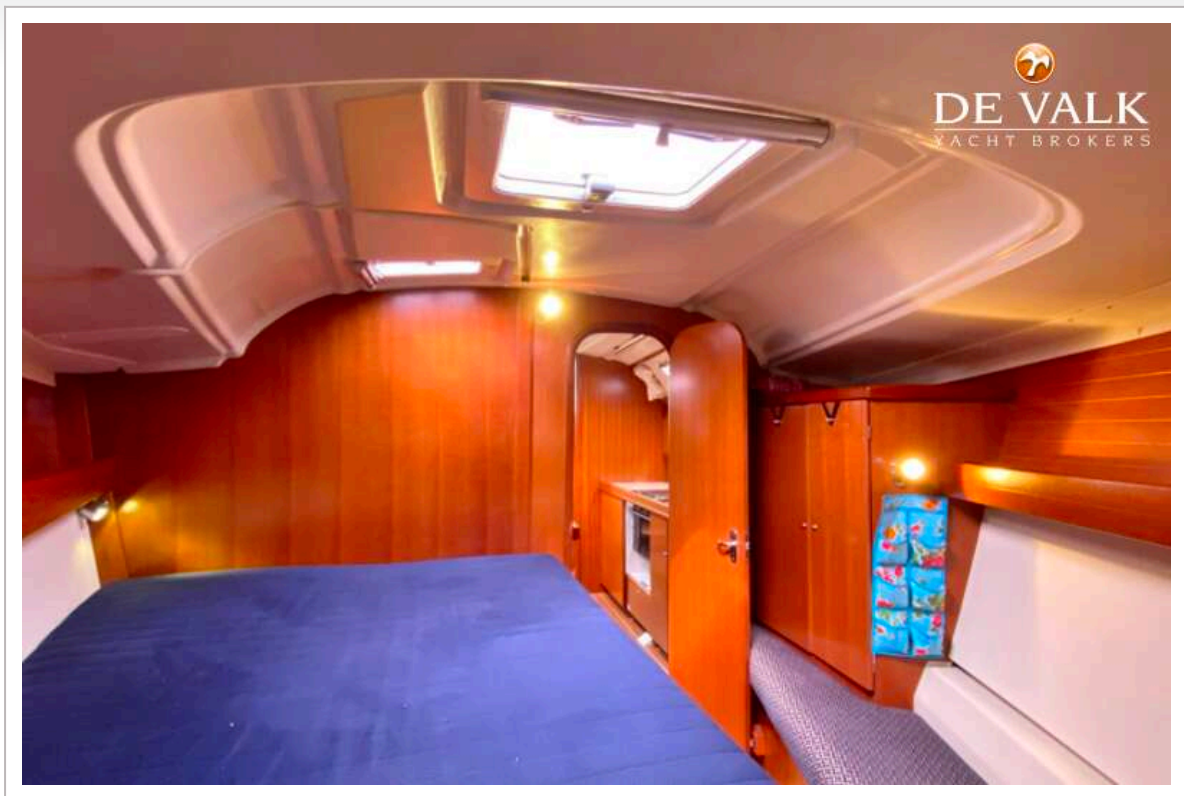
DUFOUR 385 GRAND LARGE



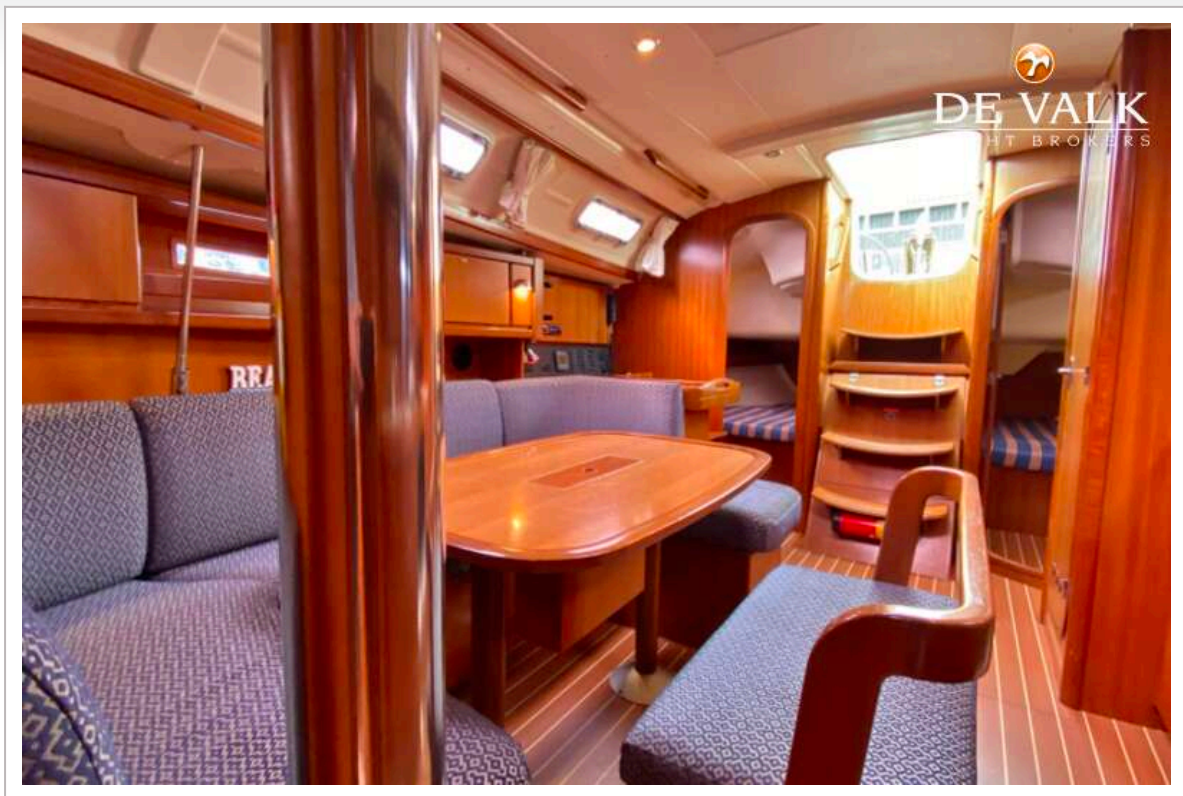
DUFOUR 385 GRAND LARGE



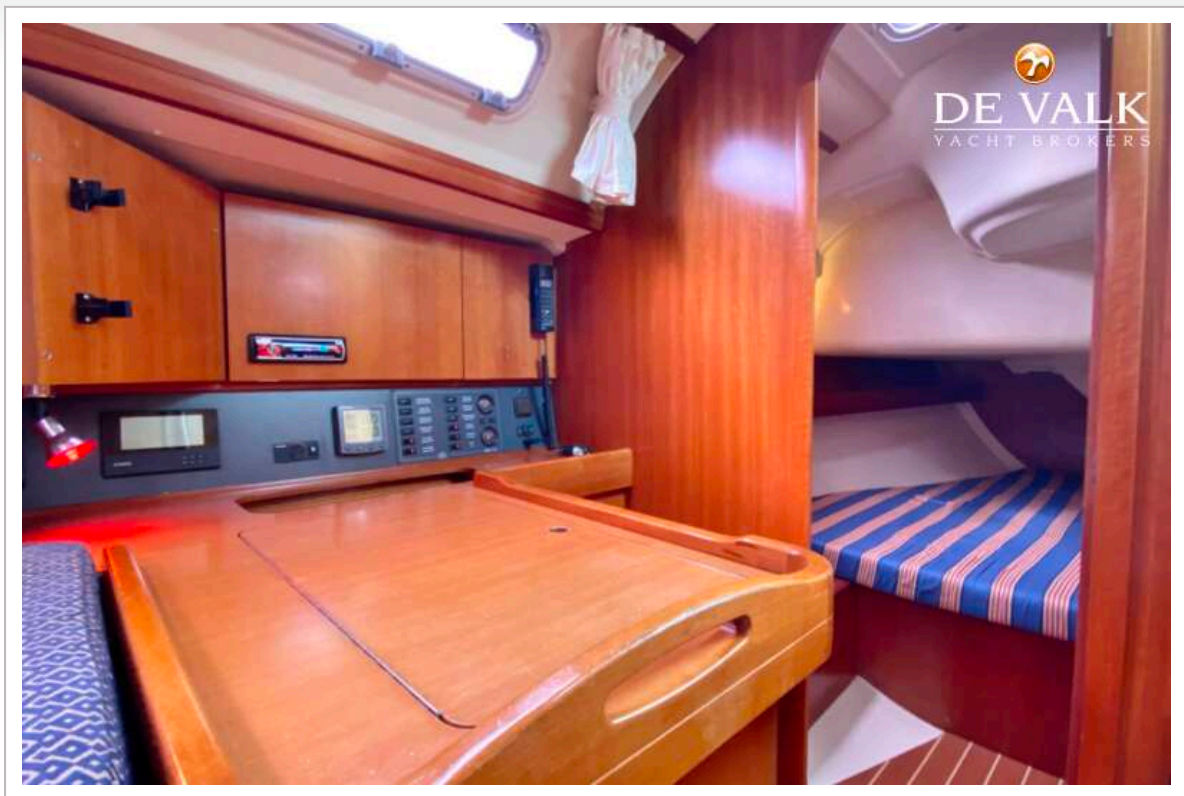
DUFOUR 385 GRAND LARGE



DUFOUR 385 GRAND LARGE



DUFOUR 385 GRAND LARGE



DUFOUR 385 GRAND LARGE



DUFOUR 385 GRAND LARGE



DUFOUR 385 GRAND LARGE

