



BAVARIA 33 CRUISER



BAVARIA 33 CRUISER

BROKER'S COMMENTS

Nice Bavaria 33 Cruiser from 2005 from her first and only owner. The Cruiser series from Bavaria are considered to be the most successful and this Bavaria 33 Cruiser will show you why. With her new 2018 updated sails her handling and performance she will meet your expectations. From her cockpit she is very safe and comfortable to handle, no need to go forward on deck. Surprisingly spacious below decks with ample headroom and full size double berths and not to forget lots of light and ventilation. Good stowage space to. Only sailed with the family. To be seen by appointment only.

Marc Weijenberg

SPECIFICATIONS

Dimensions	10.65 x 3.48 x 1.85 (m)	Builder	Bavaria Yachtbau GmBh
Built	2005	Cabins	2
Material	GRP	Berths	6
Engine(s)	1 x Volvo Penta D1-30 diesel	Hp/Kw	29.00 (hp), 21.32 (kw)
Asking price	sold (VAT)	Lying	contact Sint Annaland

CONTACT

Sales office	De Valk Sint Annaland B.V.	Telephone	+31 (0)166 601 000
Address	Koelhuisweg 4 4697 RM Sint Annaland NL	E-mail	sintannaland@devalk.nl

DISCLAIMER

These particulars are given in good faith as supplied but cannot be guaranteed.



BAVARIA 33 CRUISER

GENERAL

Model	BAVARIA 33 CRUISER
Type	sailing yacht
LOA (m)	10,65
LWL (m)	9,00
Beam (m)	3,48
Draft (m)	1,85
Air draft (m)	14,82
Headroom (m)	1,88
Year built	2005
Builder	Bavaria Yachtbau GmbH
Country	Germany
Designer	J&J Design
Displacement (t)	5,4
Ballast (tonnes)	cast iron 1,45
CE norm	A
Hull material	GRP
Hull colour	white
Hull shape	round-bilged
Keel type	fin keel
Superstructure material	GRP
Rubbing strake	aluminum
Deck material	GRP
Deck finish	non-skid moulded in
Superstructure deck finish	non-skid moulded in
Cockpit deck finish	teak
Window material	polycarbonate
Deckhatch	yes
Portholes	aluminium
Fuel tank (litre)	polyethylene 120
Freshwater tank (litre)	polyethylene 200



BAVARIA 33 CRUISER

Blackwater tank (litre)	polyethylene 30
Blackwater tank extraction	deck extraction + uw line
Wheel steering	cable steering Lewmar
Emergency tiller	yes
Extra info	"collapsible" steering wheel for easy access in cockpit

ACCOMMODATION

Cabins	2
Berths	6
Interior	cherry
Floor	woodprint
Saloon	with L-shape settee
Headroom saloon (m)	1,88
Heating	diesel ducted hot air Webasto (2 x vent)
Chart table	yes
Dinette	(sleeping for 2 persons)
Galley	yes
Countertop	plastic
Sink	stainless steel 1 x
Cooker	calor gas Bavaria 2 burner
Oven	Bavaria
Fridge	toploading Weaco 12v
Hot water system	220V + engine
Water pressure system	electrical
Owners cabin	v-bed
Bed length (m)	with slats 2,00 x 2,00/0,50
Wardrobe	hanging and shelves
Bathroom	shared 1
Toilet	shared
Toilet system	manual Jabsco
Wash basin	in the bathroom



BAVARIA 33 CRUISER

Shower	shared
Guest cabin 1	double bed
Bed length (m)	2,00 x 1,60
Wardrobe	hanging and shelves
Extra info	there is an abundance of light and ventilation in the interior with clever use of fixed deck windos, portholes and deckhatches.

MACHINERY

No of engines	1
Make	Volvo Penta
Type	D1-30
HP	29
kW	21,32
Fuel	diesel
Year installed	2005
Maximum speed (kn)	7
Cruising speed (kn)	6
Consumption (l/hr)	3
Engine hours	700
Engine cooling system	freshwater heat exchanger
Drive	sail-drive
Saildrive seal	new 03/2016
Engine controls	bowden cable
Gearbox	mechanical Volvo Penta S-130S
Exhaust	watercooled
Propeller type	fixed Volvo Penta
Propeller blades	2
Manual bilge pump	1 x
Electric bilge pump	1 x
Electrical installation	12/220v
Start battery	1 x



BAVARIA 33 CRUISER

Service battery	2 x (2021)
Battery charger	Victron IVO 12v/50amp-3
Shorepower	with cable
Extra info	documented service history

NAVIGATION

Compass	Plastimo Horizon
Electric compass	via autopilot
Depth sounder/log	Raymarine ST60+ Bidata
Windset	Raymarine ST60+
VHF	with cockpit connection Raymarine Ray240E DSC
Autopilot	Raymarine ST6002 /S1G
Rudder angle indicator	via autopilot
Radar	Raymarine 2kW digital
GPS	Raymarine Raystar 125
Plotter	Raymarine C70
Electronic chart(s)	Navionics XG28 (2021 update)
Navigation lights	yes

EQUIPMENT

Sprayhood with grab rail	yes
Bimini	yes
Cockpit cushions	full set
Cockpit table	fixed with storage
Bathing platform	yes
Boarding ladder	stainless steel
Deck shower	yes
Anchor	CQR Plough 15kg
Anchor chain	50 mtr
Windlass	electrical Lewmar
Sea railing	wire



BAVARIA 33 CRUISER

Grab rail (superstructure)	stainless steel
Pushpit	yes
Pulpit	yes
Life raft	valise (or bag) XM Yachting (2015)
Life raft (pers)	4
Last life raft survey	must be serviced
Lifejackets	4 x inflating, 3 x conventional
Lifebuoy	yes
Danbuoy	yes
Radar reflector	Blipper (in mast)
Fenders	yes
Mooring lines	yes
Spare parts	an assortement
Fire extinguisher	3 x
Latest extinguisher survey	???

RIGGING

Rigging	sloop
Standing rigging	wire
Brand mast	Seldén
Material mast	aluminium
Spreaders	2 x set
Mainsail cover	with Lazy Jacks "easy-stowe"
Fully battened mainsail	with Rutgerson riders Den Boer Sails cross-cut (2018)
Genoa	with UV strip Den Boer Sails Tri-radial (2018)
Genoa furler	Furlex 200S
Reefing System	quick-one-line-reefing
Backstay adjuster	tackle
Boomvang	gasspring Seldén Rodkicker
Genoa sheetwinches	2 x Lewmar 30ST
Halyard winches	2 x Lewmar 16ST





BAVARIA 33 CRUISER



BAVARIA 33 CRUISER



BAVARIA 33 CRUISER



BAVARIA 33 CRUISER



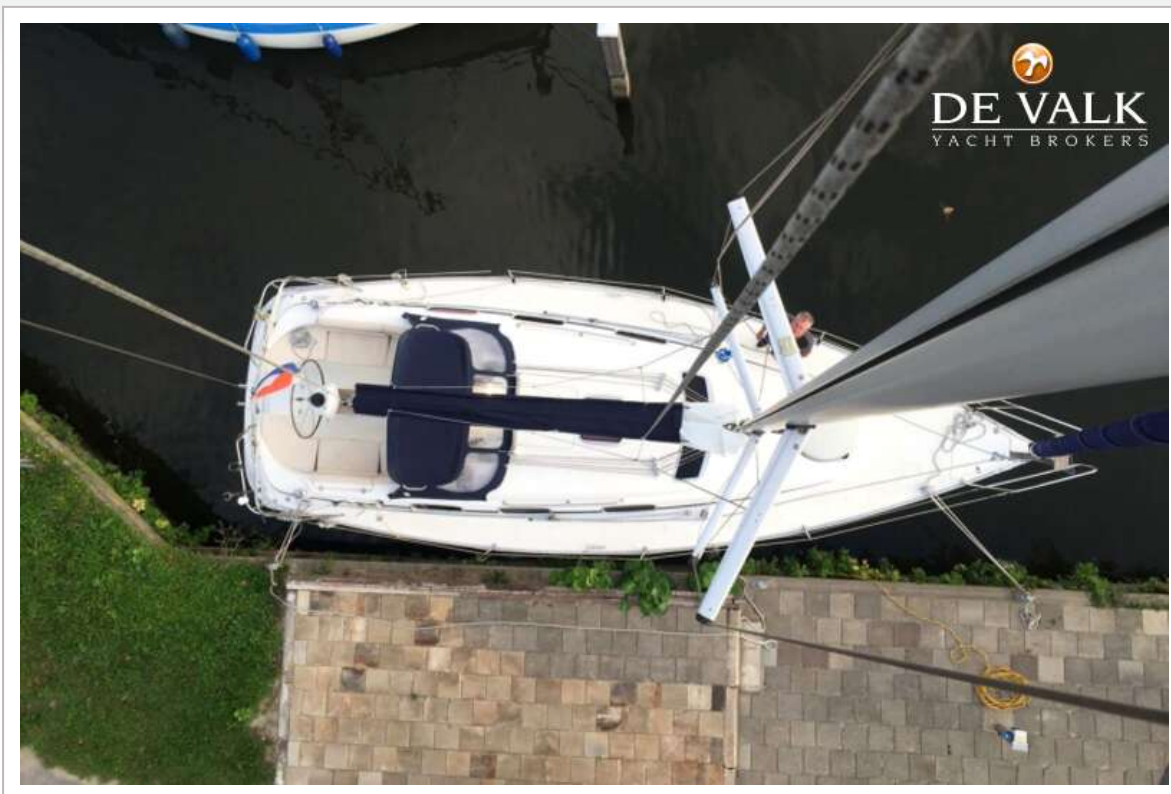
BAVARIA 33 CRUISER



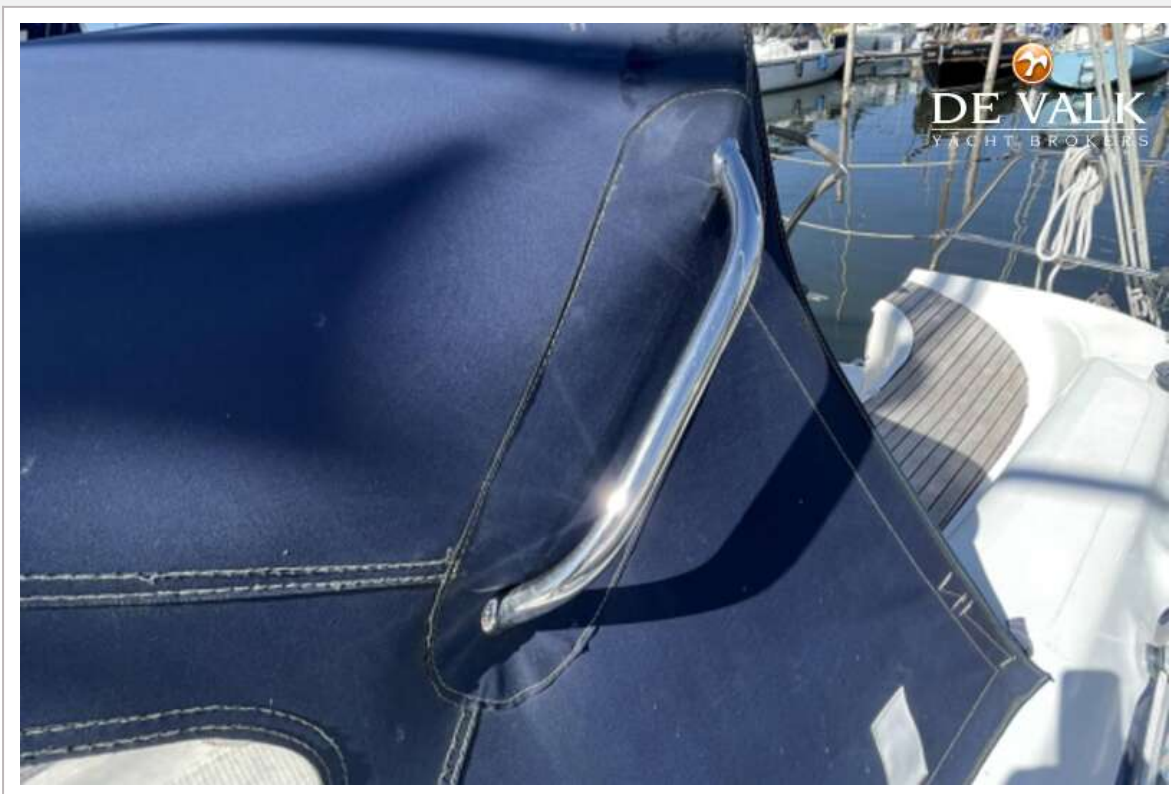
BAVARIA 33 CRUISER



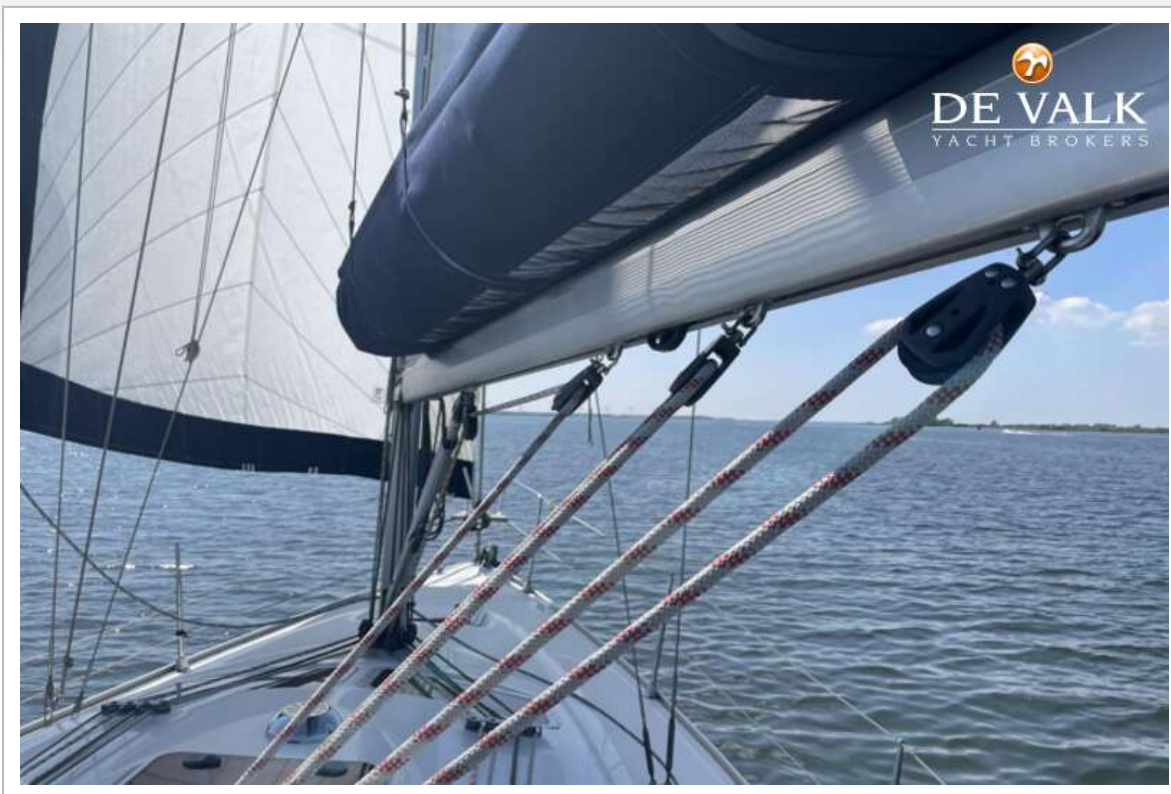
BAVARIA 33 CRUISER



BAVARIA 33 CRUISER



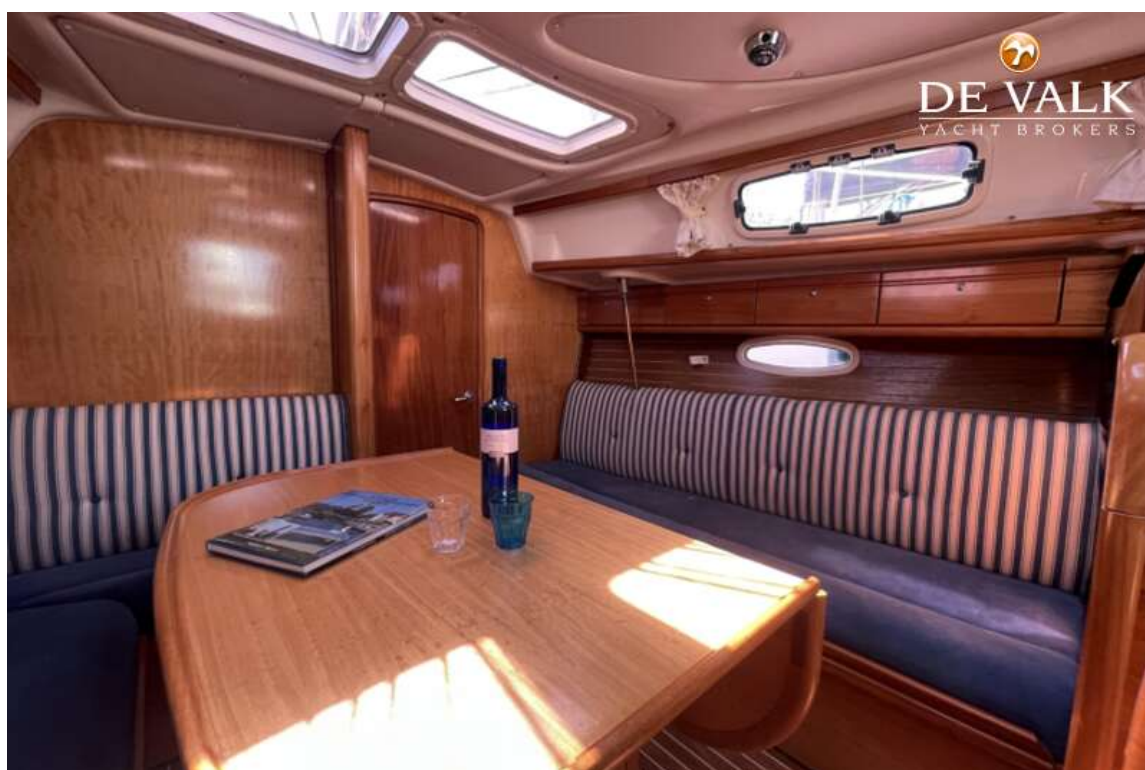
BAVARIA 33 CRUISER



BAVARIA 33 CRUISER



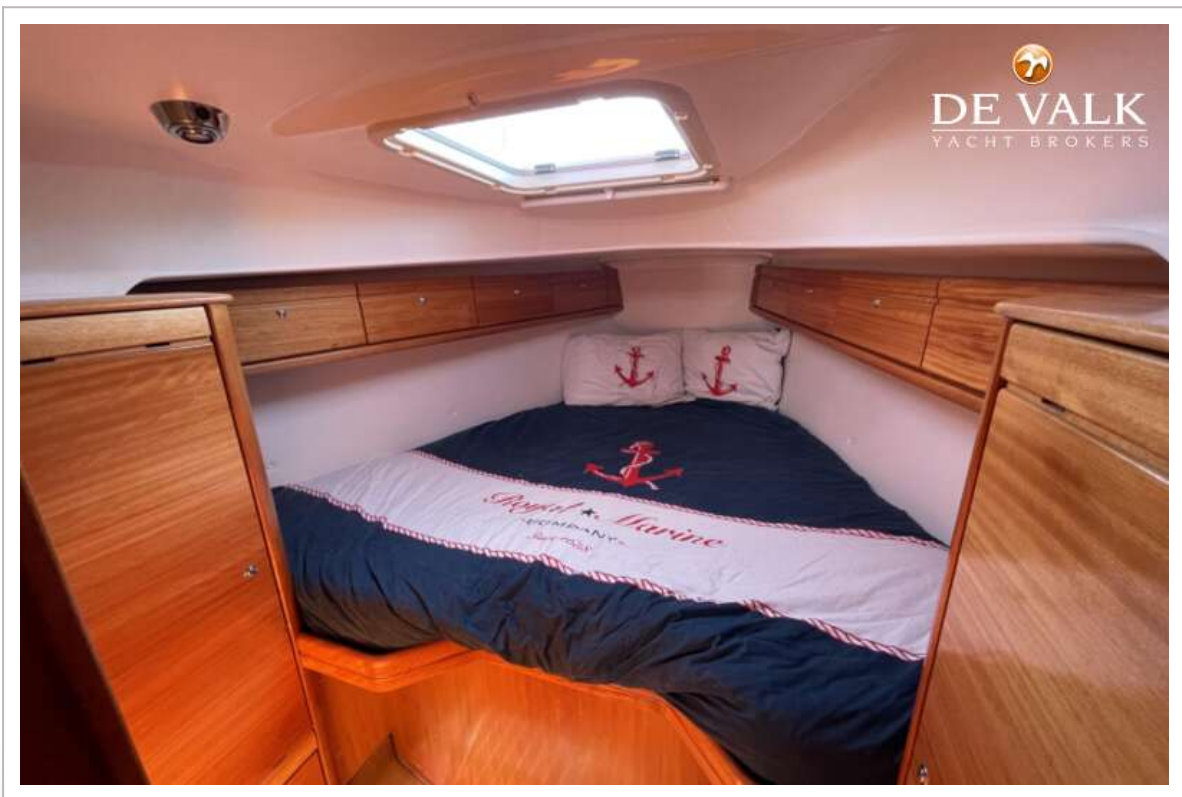
BAVARIA 33 CRUISER



BAVARIA 33 CRUISER



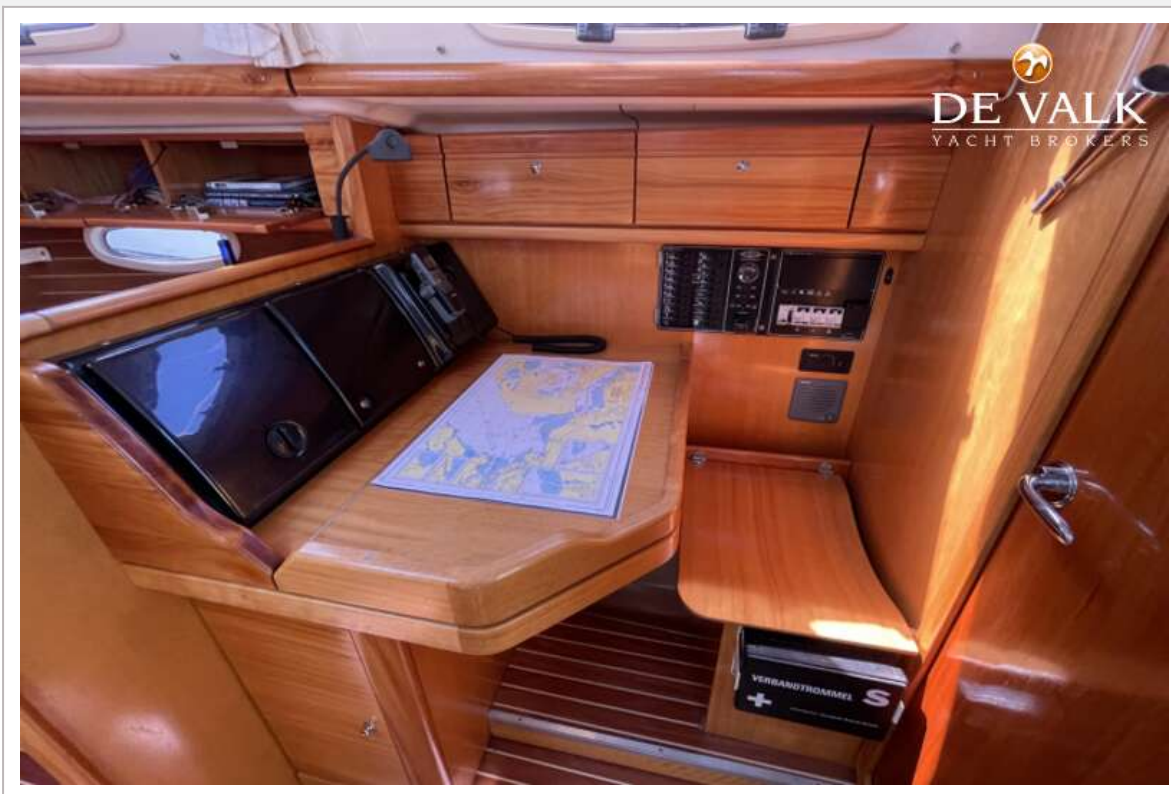
BAVARIA 33 CRUISER



BAVARIA 33 CRUISER



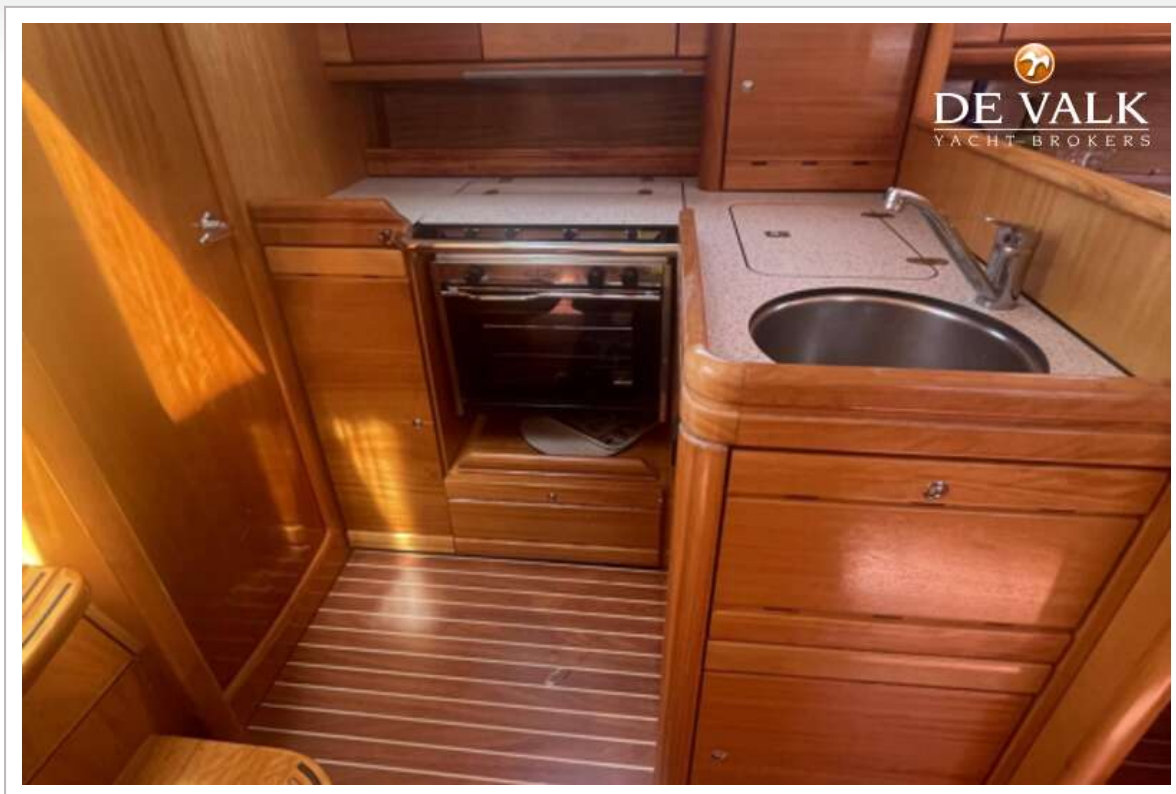
BAVARIA 33 CRUISER



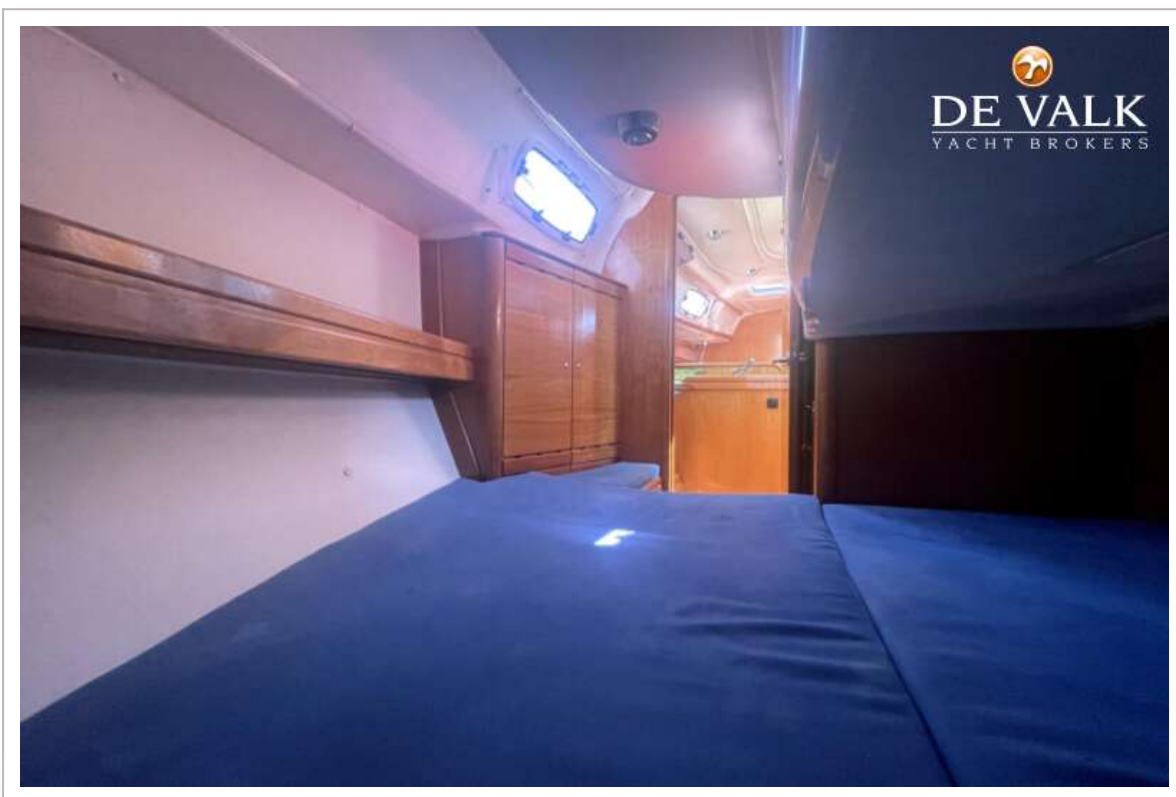
BAVARIA 33 CRUISER



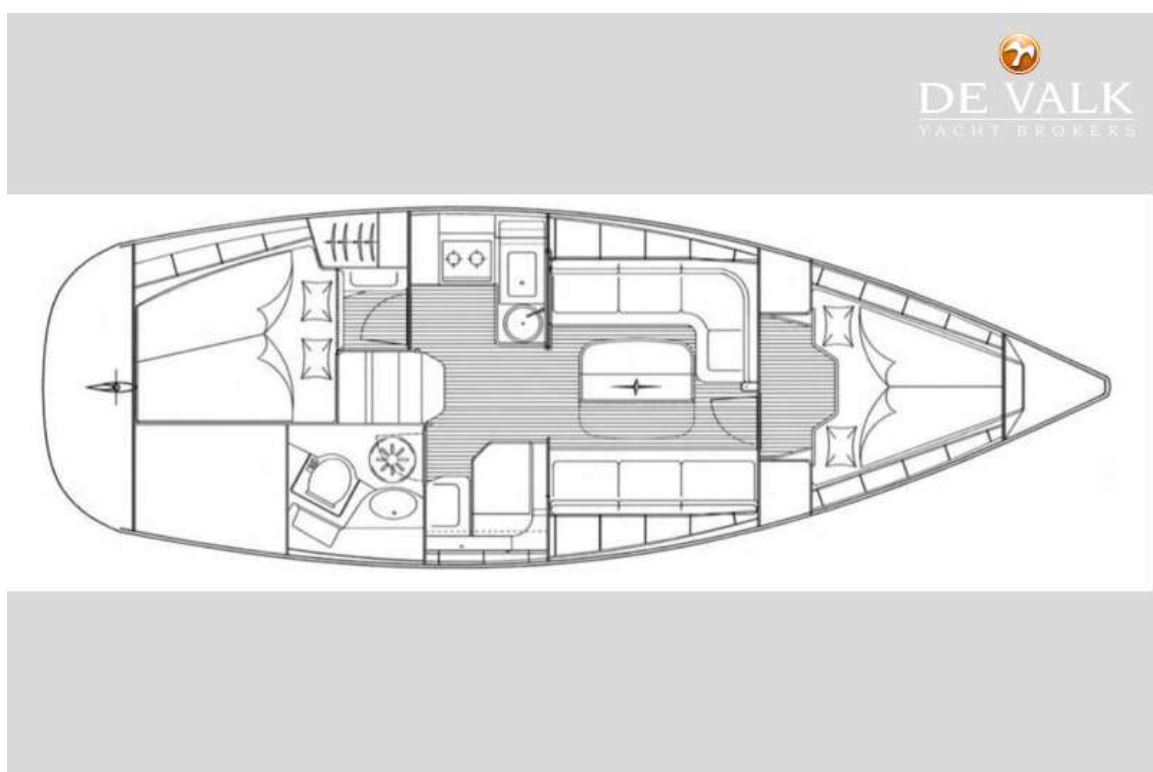
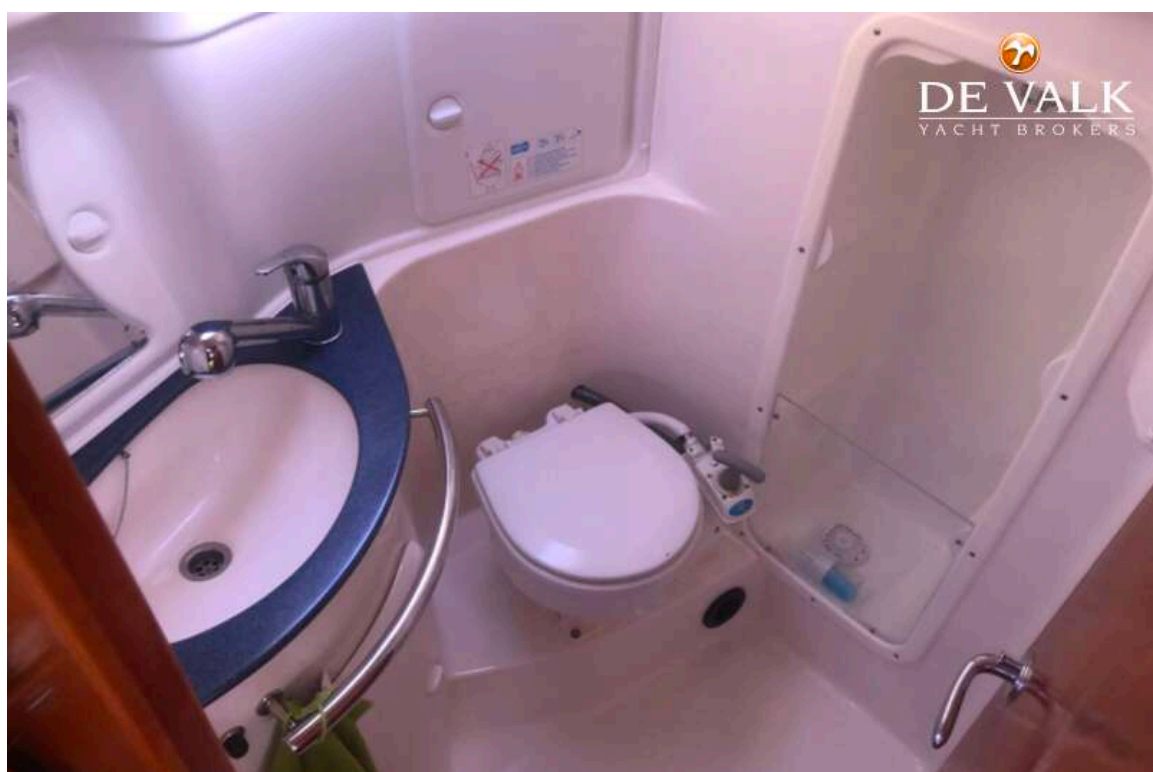
BAVARIA 33 CRUISER



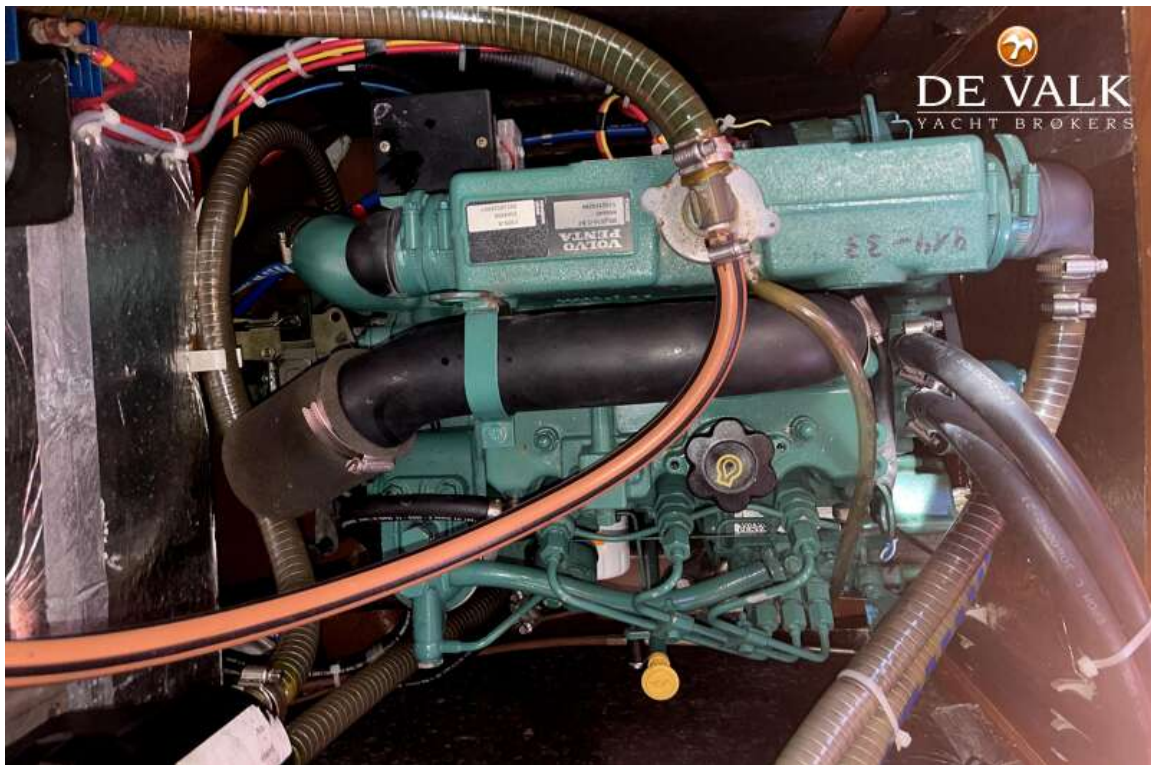
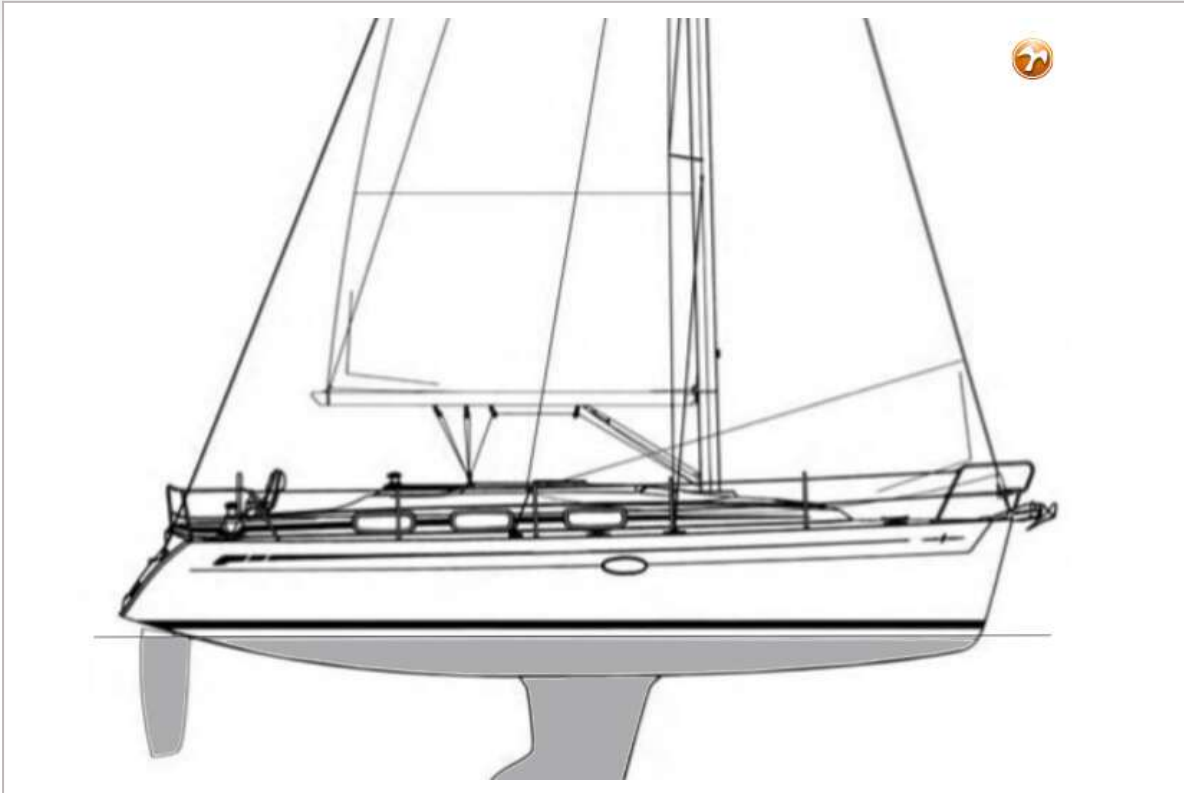
BAVARIA 33 CRUISER



BAVARIA 33 CRUISER



BAVARIA 33 CRUISER



BAVARIA 33 CRUISER



BAVARIA 33 CRUISER

