



DE VALK
YACHT BROKERS



PRINCESS V48



DE VALK
YACHT BROKERS

PRINCESS V48

BROKER'S COMMENTS

The Princess V48 was built by one of Europe's leading boat manufacturers and ticks all the boxes for a modern sports cruiser; large cockpit, sunbeds fore and aft, dinghy garage, hardtop with sliding roof, powerful and modern diesel engines on shaft drives, spacious accommodation inside and out and much more. Designed by Bernard Olesinski, she offers great performance, easy handling and excellent sea keeping. Come take a look at this Princess V48 in Sint Annaland as soon as you can. Nowadays boats like this won't stay on the market long!

Nick Lanting

SPECIFICATIONS

Dimensions	14.68 x 4.01 x 1.02 (m)	Builder	Princess Yachts International
Built	2005	Cabins	2
Material	GRP	Berths	6
Engine(s)	2 x Volvo Penta D9-575 EVC diesel	Hp/Kw	2 x 575.00 (hp), 423.20 (kw)
Asking price	sold (VAT)	Lying	at sales office

CONTACT

Sales office	De Valk Sint Annaland B.V.	Telephone	+31 (0)166 601 000
Address	Koelhuisweg 4 4697 RM Sint Annaland NL	E-mail	sintannaland@devalk.nl

DISCLAIMER

These particulars are given in good faith as supplied but cannot be guaranteed.



GENERAL

Model	PRINCESS V48
Type	motor yacht
LOA (m)	14,68
Beam (m)	4,01
Draft (m)	1,02
Headroom (m)	1,99
Year built	2005
Launched	2005
Builder	Princess Yachts International
Country	United Kingdom
Designer	Bernard Olesinski
Displacement (t)	12,3
CE norm	B
Hull material	GRP
Hull colour	blue
Hull shape	deep-V
Superstructure material	GRP
Rubbing strake	stainless steel With rubber insert
Deck material	GRP
Deck finish	non-skid moulded in
Superstructure deck finish	non-skid moulded in
Cockpit deck finish	teak
Antifouling (year)	2020
Window material	tempered glass
Deckhatch	2 x
Portholes	stainless steel With integrated flyscreens
Radar arch	
Fuel tank (litre)	682
Fuel tank 2 (litre)	682
Level indicator (fuel tank)	yes



Freshwater tank (litre)	364
Level indicator (freshwater)	yes
Blackwater tank (litre)	
Blackwater tank extraction	deck extraction + pump
Outside helm position	hydraulic
Extra info	Dinghy garage; 2,90 x 1,60 mtrs

ACCOMMODATION

Cabins	2
Berths	6
Interior	cherry
Floor	carpet
Open cockpit	yes
Saloon	yes
Headroom saloon (m)	1,99
Sliding roof	Electric, canvas from 2018
Air-conditioning	reverse cycle airco 3 units
Chart table	yes
Dinette	yes
Dinette to convert into berth	2,20 x 1,00 m
Sliding door to cockpit	yes
Galley	yes
Countertop	plastic
Sink	stainless steel 2 x
Cooker	electric Plastimo 2-burner
Microwave/oven combi	Panasonic
Fridge	With ice compartment
Hot water system	220V + engine QL boiler
Water pressure system	electrical
Crockery	yes
Owners cabin	double bed Forward, headroom 1,90 m



PRINCESS V48

Bed length (m)	1,95 x 1,55
Wardrobe	hanging/drawers/shelves
Bathroom	en suite Headroom 1,84 m
Toilet	en suite
Toilet system	electric Jabsco
Wash basin	in the bathroom
Shower	en suite
Guest cabin 1	twin single Aft, headroom 1,85 m
Bed length (m)	1,80 x 0,70 (2x) or 1,80 x 1,90 with infill cushion
Wardrobe	drawers and shelves
Bathroom	en suite Headroom 1,88 m
Toilet	en suite
Toilet system	electric Jabsco
Wash basin	in the bathroom
Shower	en suite
Wet bar	In cockpit, with sink, fridge and griddle

MACHINERY

No of engines	2
Make	Volvo Penta
Type	D9-575 EVC
HP	575
kW	423,20
Fuel	diesel
Year installed	2005
Maximum speed (kn)	32
Cruising speed (kn)	25
Engine hours	620
Engine cooling system	freshwater heat exchanger
Drive	shaft
Engine controls	electrical Volvo Penta EVC



Gearbox	hydraulic
Bowthruster	Side-Power
Exhaust	watercooled
Propeller type	fixed
Propeller blades	4
Propeller shaft material	stainless steel
Shaft lubrication	water
Manual bilge pump	yes
Electric bilge pump	yes
Bilge alarm	yes
Electrical installation	24V / 220V
Generator	silent separator Onan MDKAV 7 kVA
Running hours generator	440
Batteries	yes
Start battery	yes
Service battery	yes
Generator battery	yes
Battery charger	Mastervolt Mass 24/50
Inverter	Victron Phoenix Inverter Smart 24/2000 (2020)
Diode battery combiners	yes
Shorepower	with cable
Trimtabs	Bennett, with indicators at helm

NAVIGATION

Compass	Danforth
Electric compass	In autopilot
Depth sounder	Raymarine ST60
Log	Raymarine ST60
VHF	Humination HM380-BB
Autopilot	Raymarine SY6001
Rudder angle indicator	Volvo Penta



Radar	Raymarine closed dome
GPS	Raymarine Raystar 125
Plotter	Raymarine C120
Electronic chart(s)	yes
Navigation lights	yes
Searchlight	Jabsco

EQUIPMENT

Fixed windscreen	yes
Fixed hardtop	With canvas sliding roof
Cockpit cover	2 x (1 original , 1 from 2018)
Cockpit cushions	yes
Cockpit table	yes
Bathing platform	yes
Boarding ladder	stainless steel
Transom door	yes
Deck shower	Hot & cold
Anchor	Delta
Anchor chain	yes
Windlass	electrical Lewmar
Capstan	On windlass
Dinghy	Zodiac
Outboard	Mercury 4 hp 4-stroke (2017)
Sea railing	stainless steel
Grab rail (superstructure)	stainless steel
Pulpit	yes
Wiper	2 x
Horn	electric
Fenders	yes
Mooring lines	yes
TV	Philips 55 cm in saloon



Radio-cd player	Pioneer with Bluetooth in saloon
DVD player	In TV
Cockpit speakers	2 x Sony
Speakers in salon	2 x Sony
Clock - barometer	In saloon
Fire extinguisher	yes
Extinguisher in engine room	yes
Auto extinguisher system	Seafire FM-200
Extra info	Sundeck cushions foredeck



PRINCESS V48



PRINCESS V48



PRINCESS V48



PRINCESS V48



PRINCESS V48



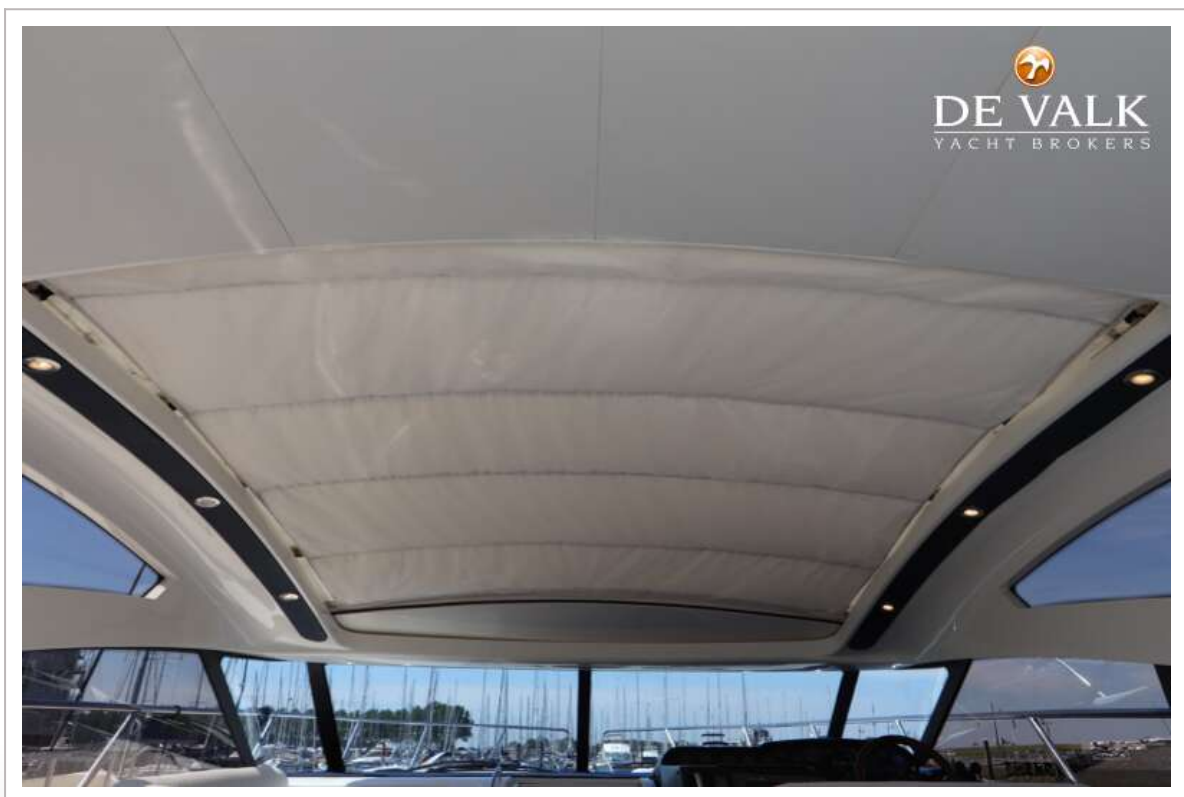
PRINCESS V48



PRINCESS V48



PRINCESS V48



PRINCESS V48



PRINCESS V48



PRINCESS V48



PRINCESS V48



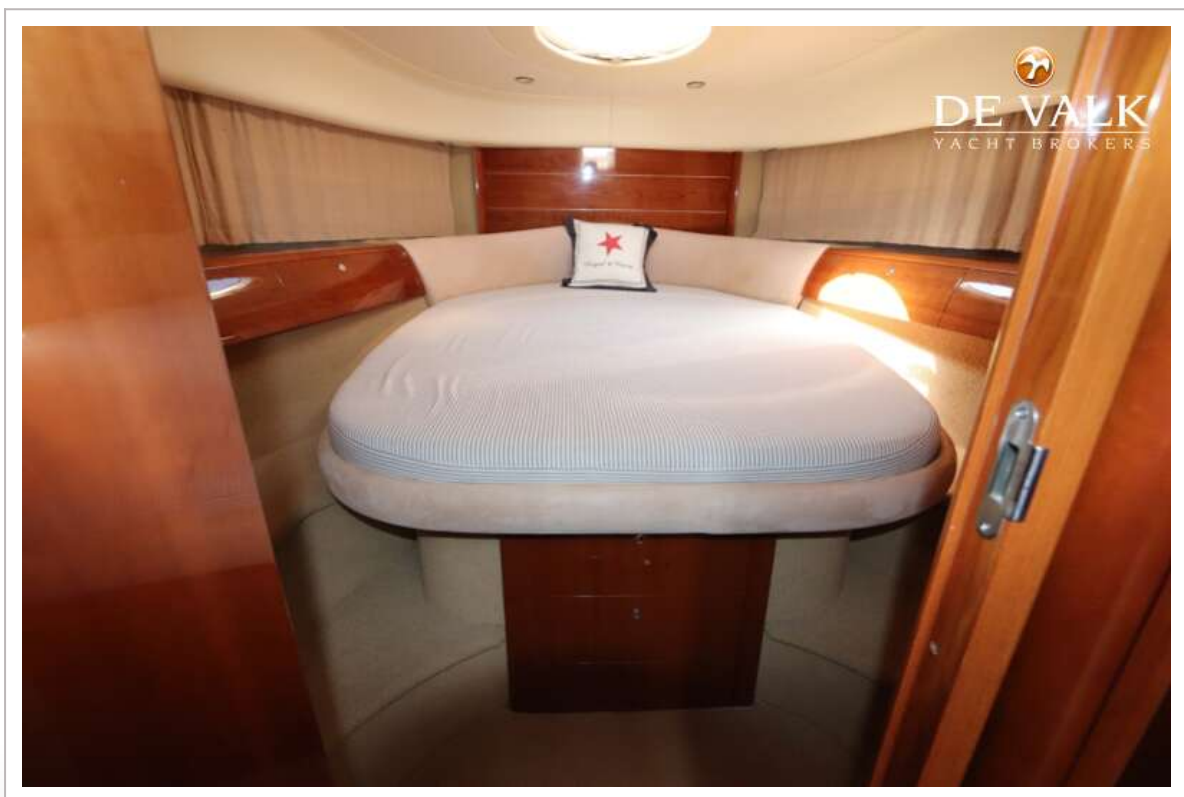
PRINCESS V48



PRINCESS V48



PRINCESS V48



PRINCESS V48



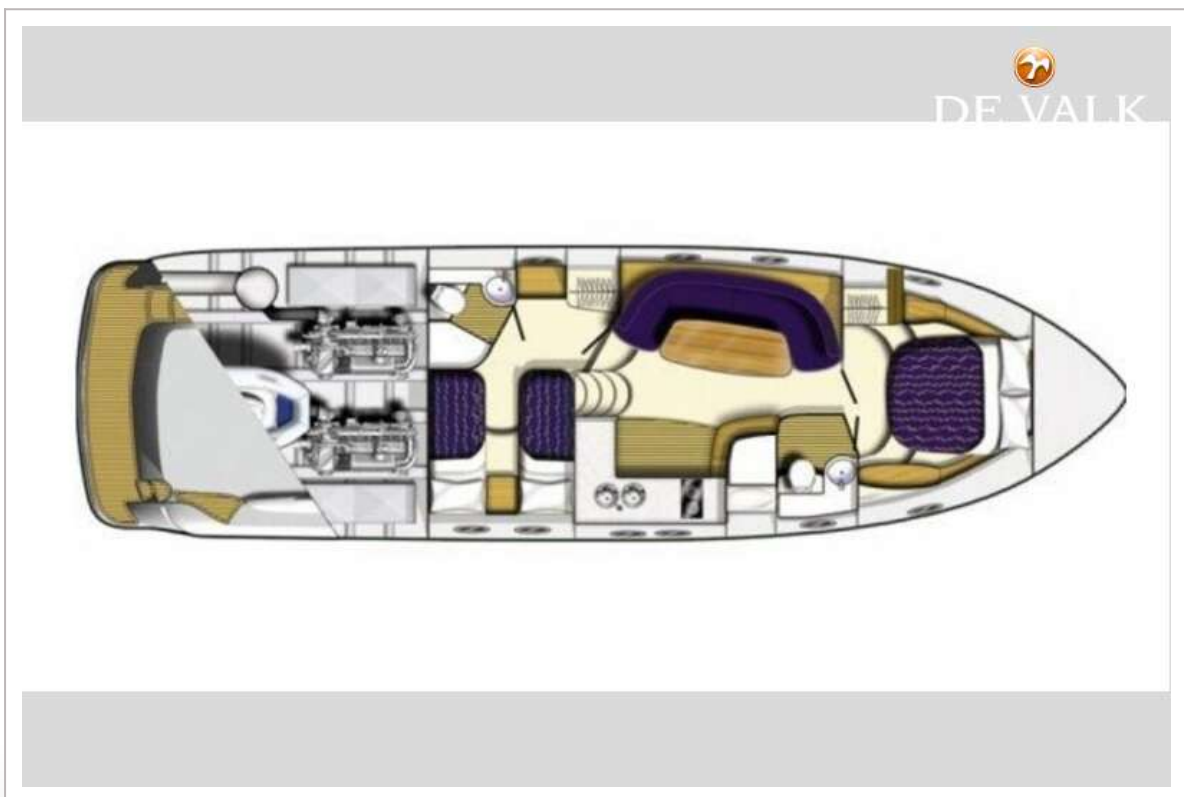
PRINCESS V48



PRINCESS V48



PRINCESS V48



PRINCESS V48



PRINCESS V48

