



GRAND BANKS 38 EASTBAY EX



GRAND BANKS 38 EASTBAY EX

BROKER'S COMMENTS

Step aboard for luxury and performance with the Grand Banks 38 Eastbay. This sophisticated boat combines timeless elegance with outstanding performance on the water. With its streamlined hull, powerful engines and sumptuous interior, the Grand Banks 38 Eastbay offers an great experience on the water.

Mark Hesselmans

SPECIFICATIONS

Dimensions	11.50 x 4.00 x 1.20 (m)	Builder	
Built	1999	Cabins	1
Material	GRP	Berths	4
Engine(s)	2 x Caterpillar diesel	Hp/Kw	2 x 375.00 (hp), 276.00 (kw)
Asking price	sold (VAT)	Lying	at sales office

CONTACT

Sales office	De Valk Loosdrecht B.V.	Telephone	+31 (0)35 582 90 30
Address	't Breukeleveense Meentje 6 1231LM Loosdrecht / Wijdmeren NL	E-mail	loosdrecht@devalk.nl

DISCLAIMER

These particulars are given in good faith as supplied but cannot be guaranteed.



GRAND BANKS 38 EASTBAY EX

GENERAL

Model	GRAND BANKS 38 EASTBAY EX
Type	motor yacht
LOA (m)	11,50
Beam (m)	4,00
Draft (m)	1,20
Year built	1999
Country	Malaysia
CE norm	B
Hull material	GRP
Hull colour	off-white
Superstructure material	wood
Deck material	GRP
Deck finish	teak
Superstructure deck finish	paint
Cockpit deck finish	teak
Window frame	aluminium
Window material	glass
Mast can be lowered	manual
Fuel tank (litre)	yes
Level indicator (fuel tank)	yes
Freshwater tank (litre)	stainless steel
Level indicator (freshwater)	yes
Wheel steering	hydraulic
Outside helm position	yes

ACCOMMODATION

Cabins	1
Berths	4
Interior	teak
Floor	wood



GRAND BANKS 38 EASTBAY EX

Open cockpit	yes
Saloon	yes
Dinette	yes
Dinette to convert into berth	yes
Opening door to cockpit	yes
Countertop	corian
Sink	stainless steel
Cooker	calor gas Seaward 3 pits
Oven	Seaward
Fridge	yes
Freezer	yes
Hot water system	220V + engine
Water pressure system	electrical
Owners cabin	v-bed
Wardrobe	drawers and shelves
Bathroom	shared
Toilet	shared
Toilet system	electric
Wash basin	in the cabin

MACHINERY

No of engines	2
Make	Caterpillar
HP	375
kW	276
Fuel	diesel
Engine hours	2275
Engine cooling system	freshwater heat exchanger
Drive	shaft
Engine controls	bowden cable
Gearbox	hydraulic



Bowthruster	electric
Propeller shaft material	stainless steel
Shaft lubrication	water
Electric bilge pump	yes
Generator	wet exhaust Mase
Batteries	yes
Start battery	yes
Service battery	3x Varta 12V 190ah.
Generator battery	Wilco royal 12V 56ah
Bowthruster battery	Varta 12V 105ah
Windlass battery	Varta 12V 105ah
Battery charger	Promatic 50-3
Inverter	yes
Shorepower	with cable

NAVIGATION

Depth sounder	Raytheon
Log	Raytheon
Autopilot	Raytheon ST7000+
Rudder angle indicator	yes
GPS	Raymarine Hybridtouch
Navigation lights	yes

EQUIPMENT

Cockpit cushions	yes
Bathing platform	yes
Boarding ladder	stainless steel
Anchor	yes
Anchor chain	yes
Windlass	electrical Maxwell
Sea railing	stainless steel



GRAND BANKS 38 EASTBAY EX

Wiper	yes
Horn	electric
Fenders	yes
Mooring lines	yes
Radio	Sony
Cockpit speakers	yes



GRAND BANKS 38 EASTBAY EX



GRAND BANKS 38 EASTBAY EX





GRAND BANKS 38 EASTBAY EX



GRAND BANKS 38 EASTBAY EX

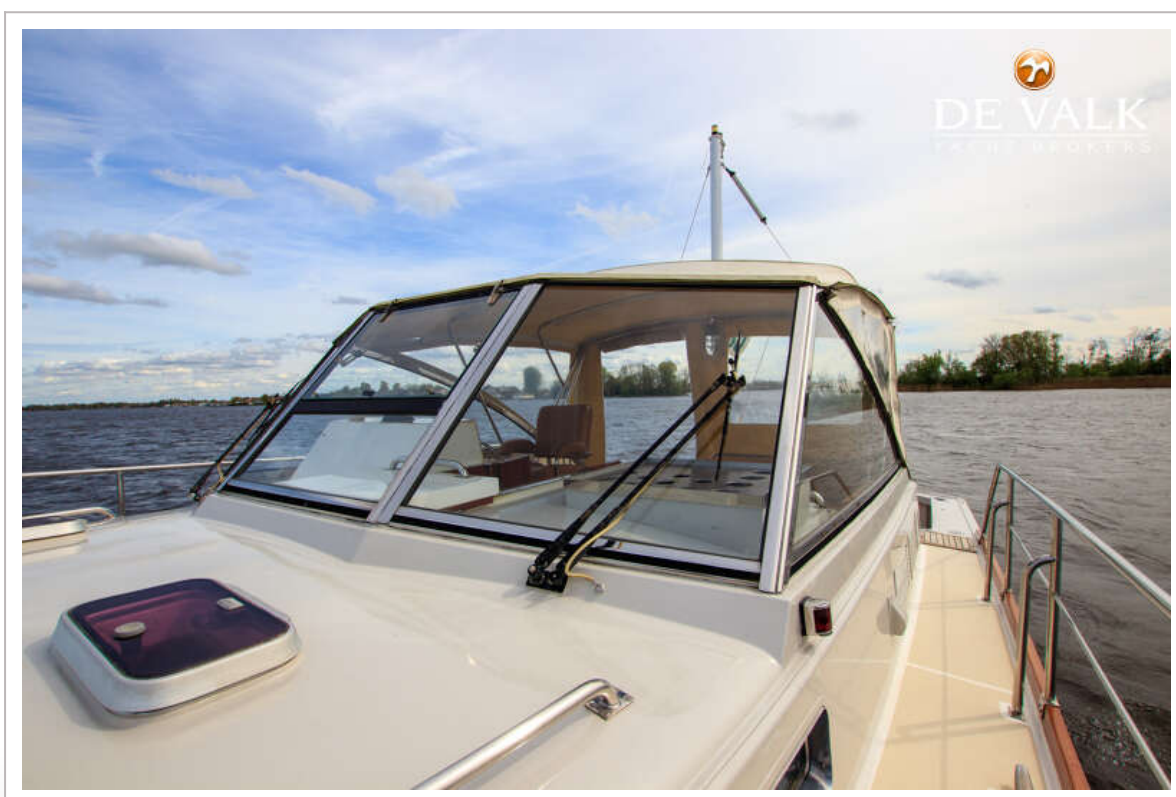




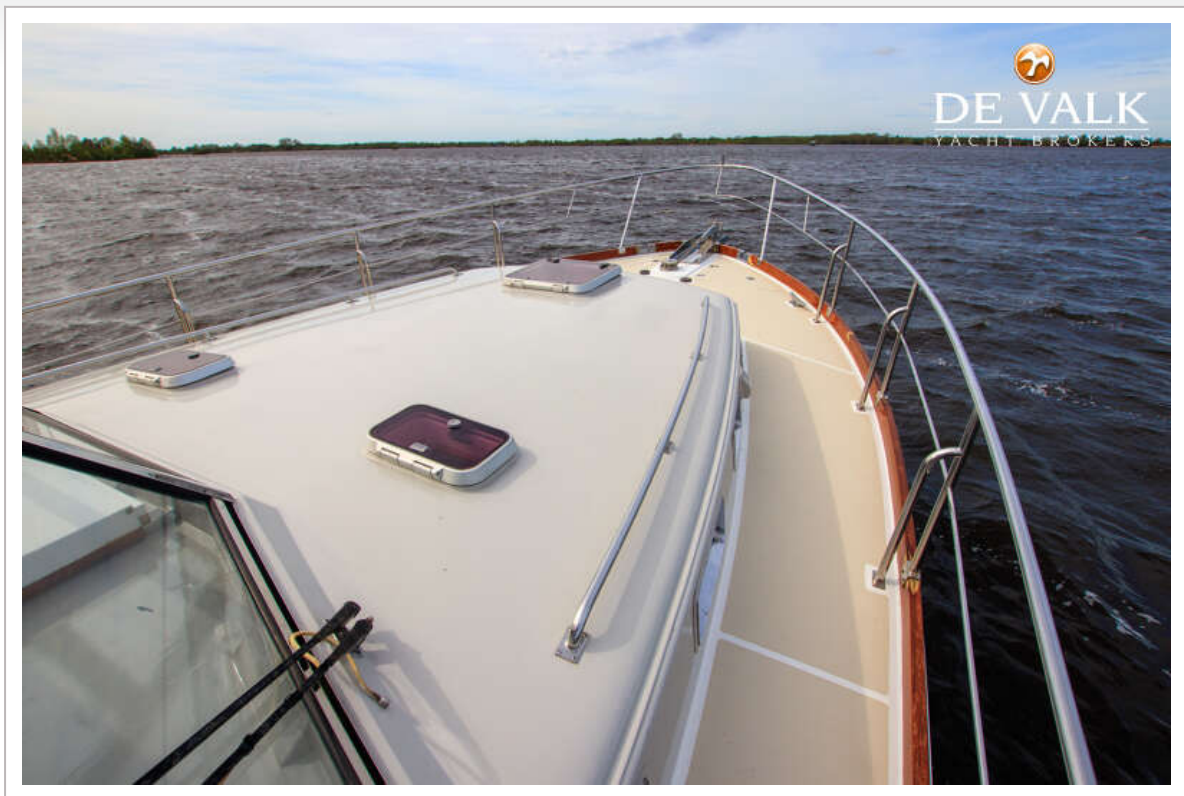
GRAND BANKS 38 EASTBAY EX



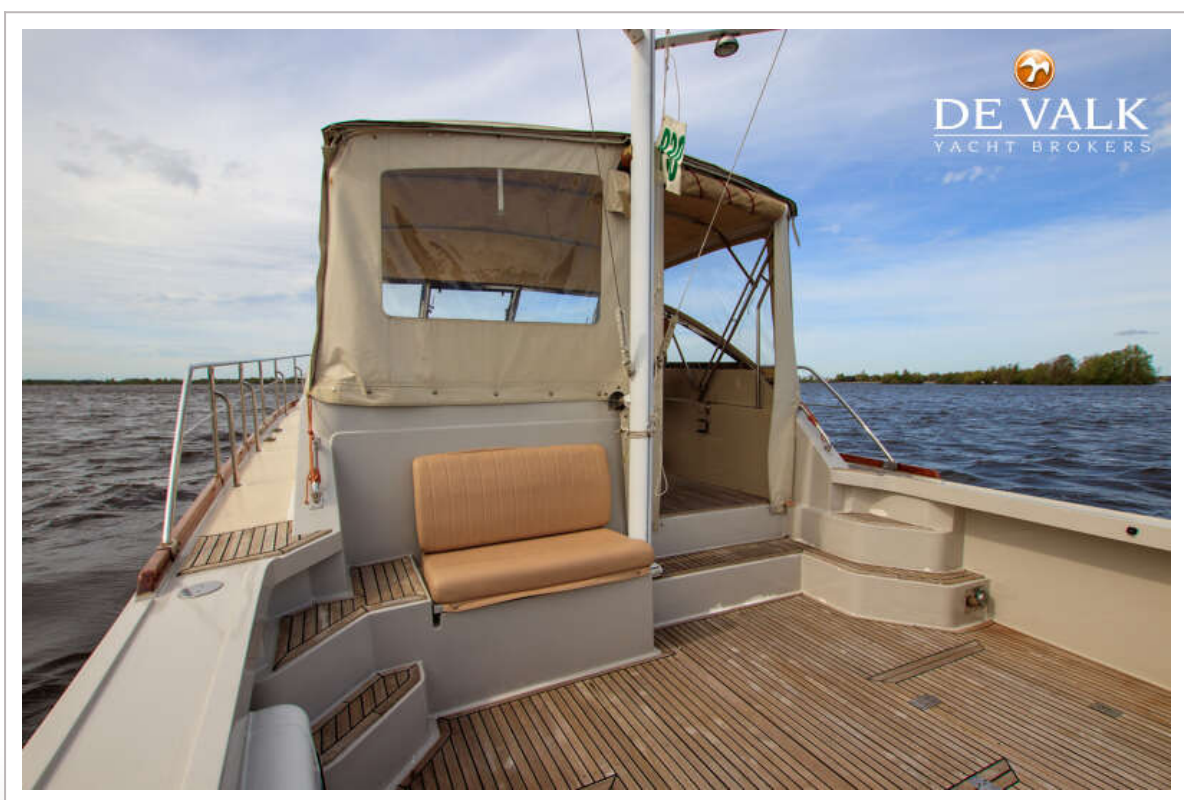
GRAND BANKS 38 EASTBAY EX



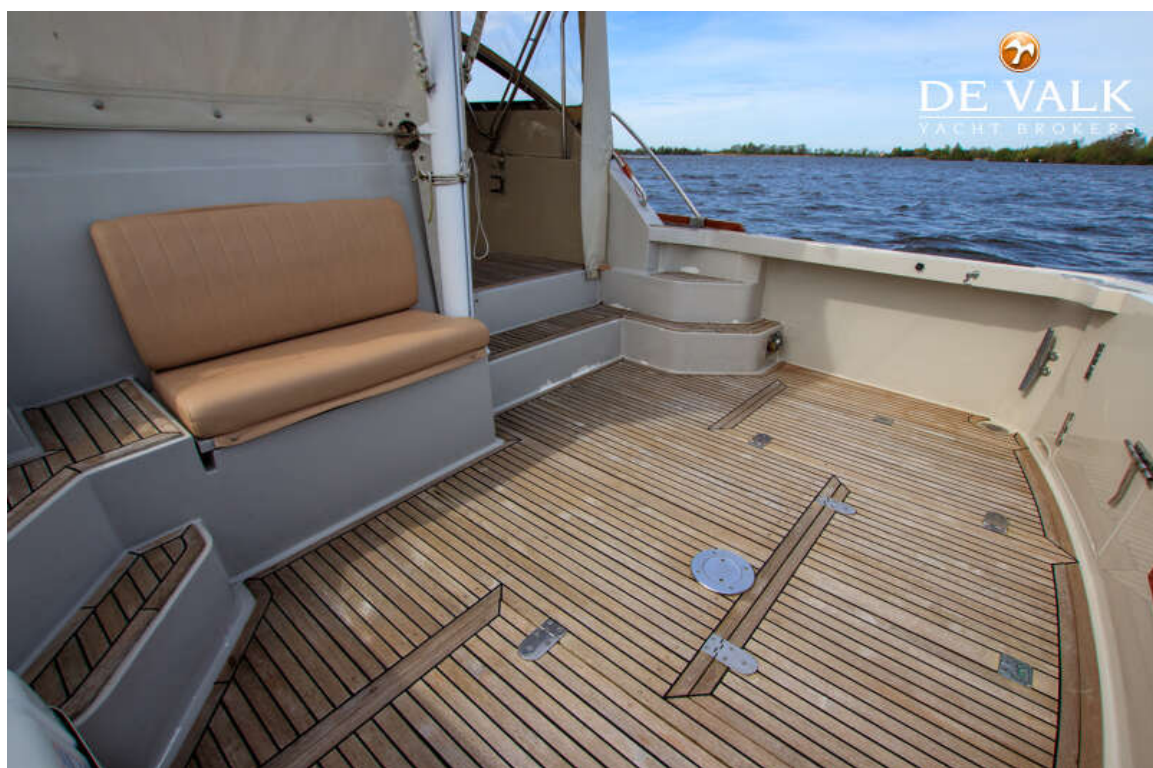
GRAND BANKS 38 EASTBAY EX



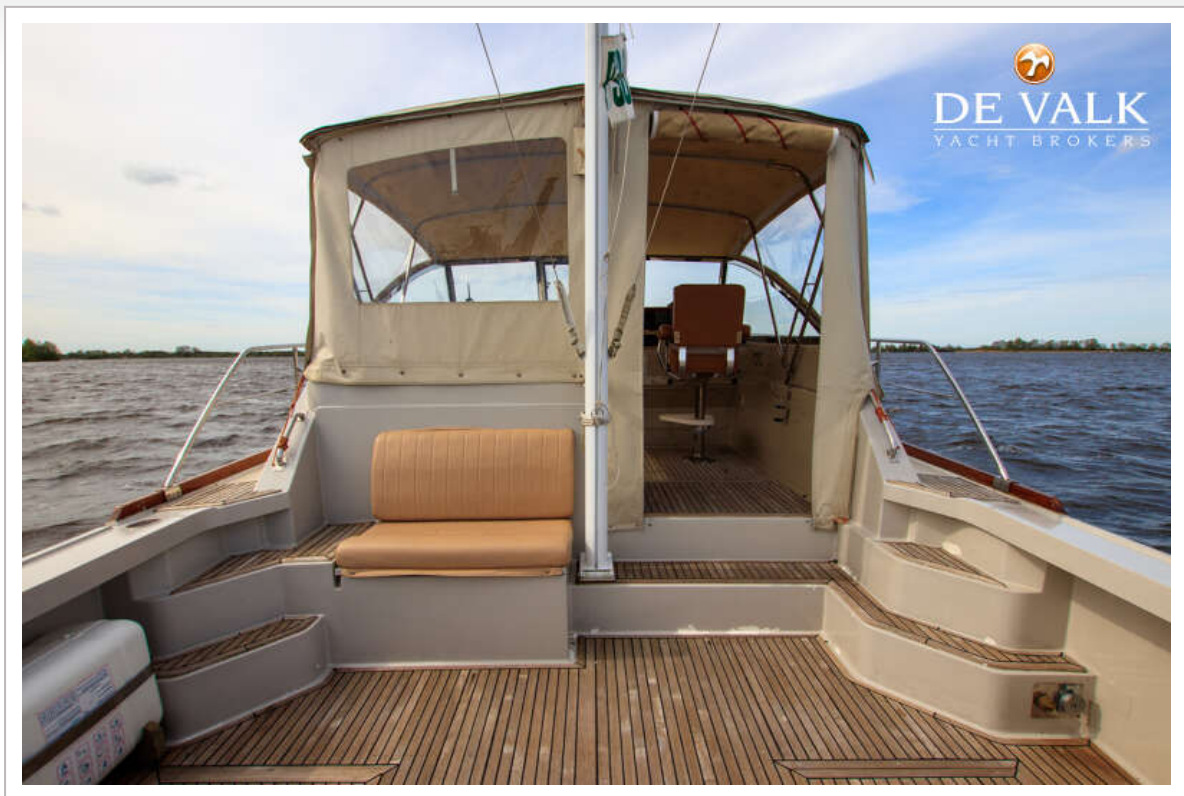
GRAND BANKS 38 EASTBAY EX



GRAND BANKS 38 EASTBAY EX



GRAND BANKS 38 EASTBAY EX



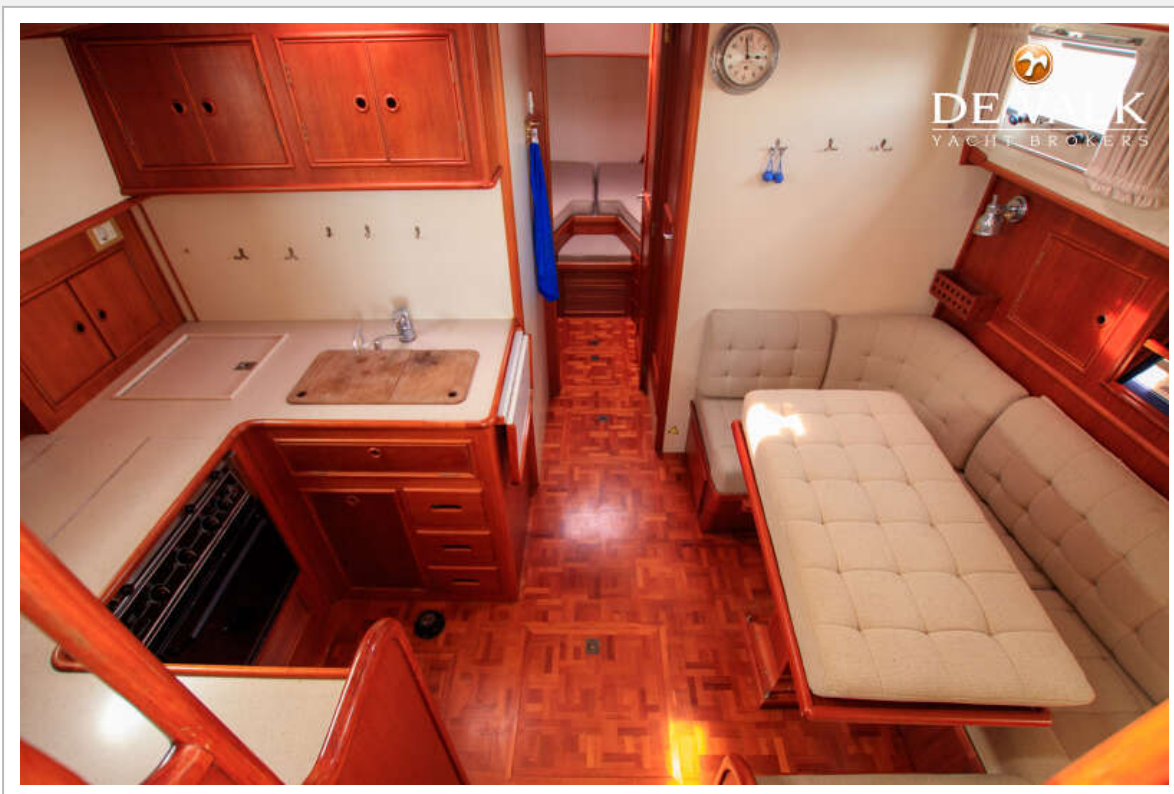
GRAND BANKS 38 EASTBAY EX



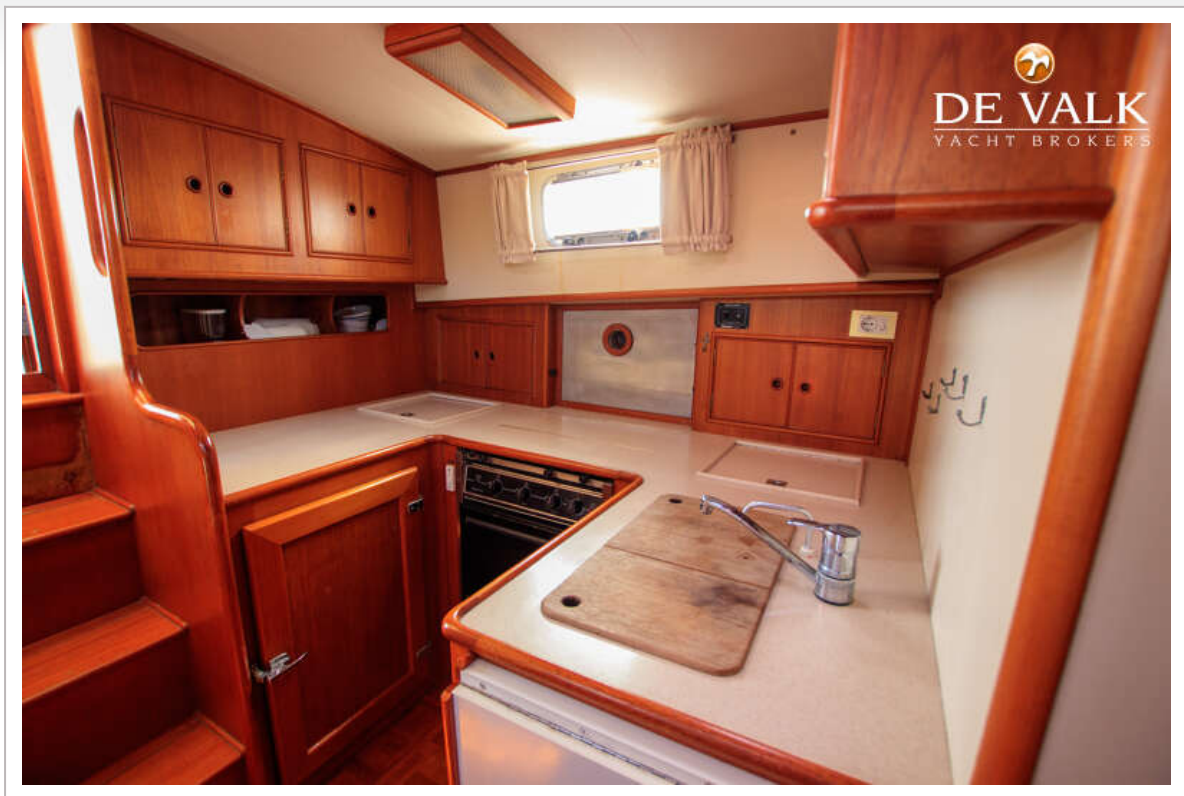
GRAND BANKS 38 EASTBAY EX



GRAND BANKS 38 EASTBAY EX



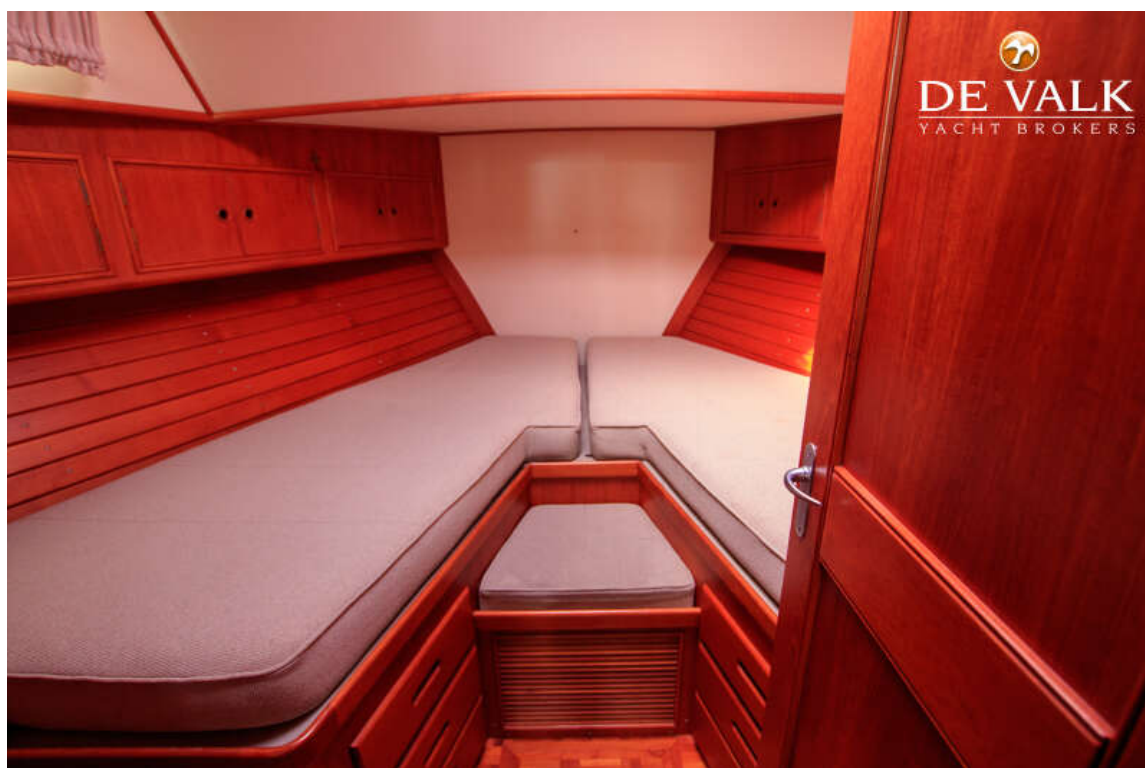
GRAND BANKS 38 EASTBAY EX



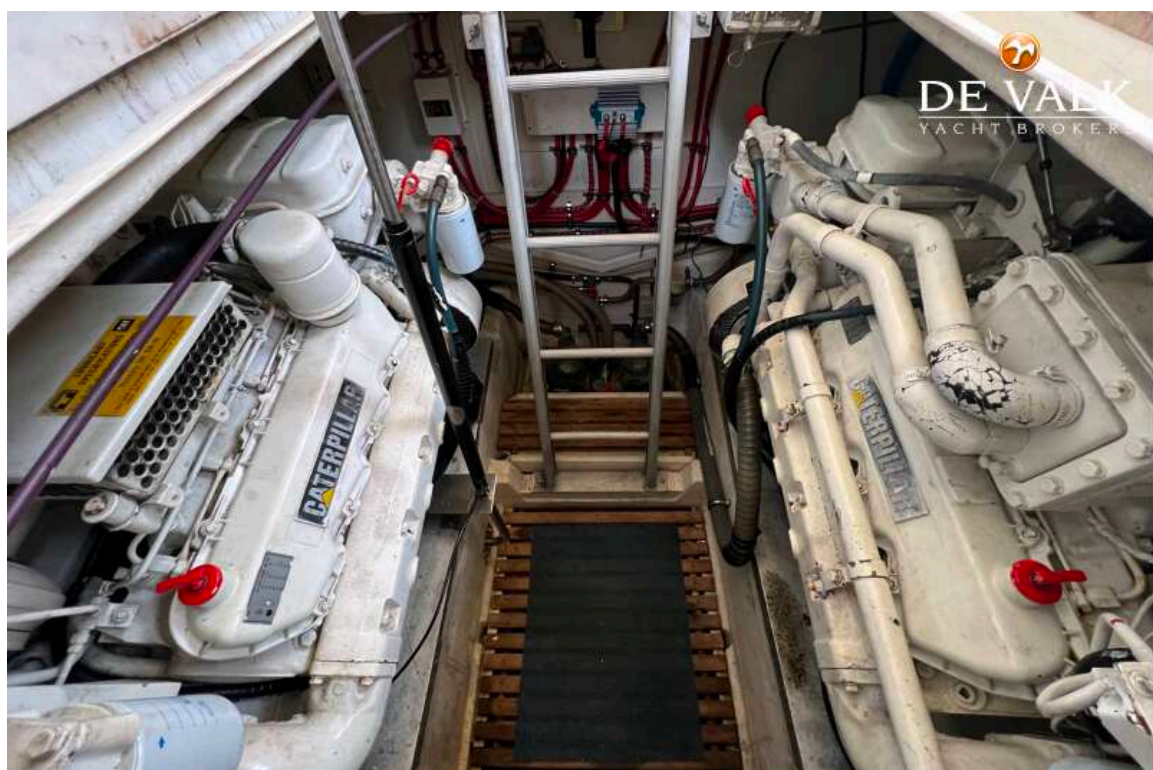
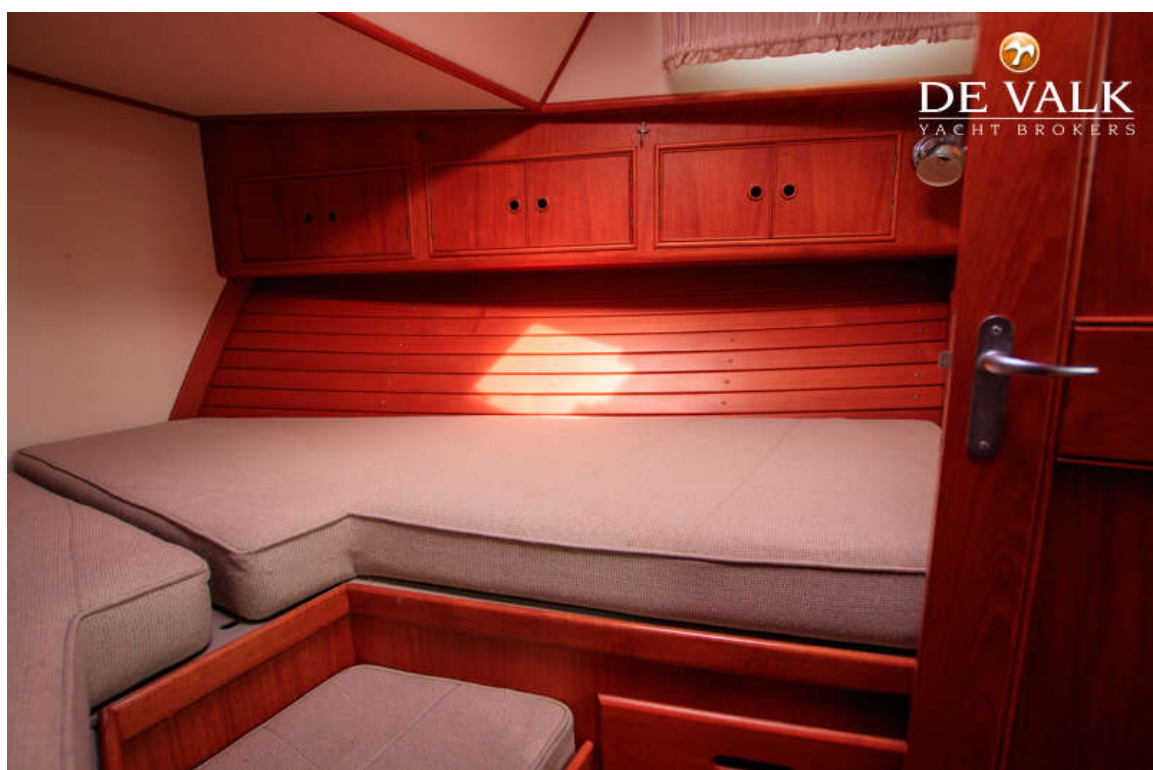
GRAND BANKS 38 EASTBAY EX



GRAND BANKS 38 EASTBAY EX



GRAND BANKS 38 EASTBAY EX



GRAND BANKS 38 EASTBAY EX

