



NELSON 42 MKII

NELSON 42 MKII

BROKER'S COMMENTS

When there ever was a safe motor yacht with heritage, the Nelson must be the prime example. Originally designed as the typical work- and pilotboat, especially the Nelson 42 "gets going, when the going gets tough". Constructed by Halmatic Ltd (who else) and completely fitted out by Dutch Atlantic yard, she is one of the better examples out there. She has numerous options, is well maintained and fitted with twin modern type diesels so you can cruise economically. So what is your plan? Cruising the French Canals, the Baltic Sea or do some comfortable European coastal hopping? She can do it all!

Pieter Bosma

SPECIFICATIONS

Dimensions	12.75 x 3.92 x 1.20 (m)	Builder	Halmatic UK & Atlantic Harlingen
Built	2000	Cabins	2
Material	GRP	Berths	5
Engine(s)	2 x Deutz DTA67-A diesel	Hp/Kw	2 x 286.00 (hp), 210.21 (kw)
Asking price	sold (VAT)	Lying	at sales office

CONTACT

Sales office	De Valk Sneek	Telephone	+31 (0)515 42 80 30
Address	Zwolsmanweg 7 8606 KC Sneek NL	E-mail	sneek@devalk.nl

DISCLAIMER

These particulars are given in good faith as supplied but cannot be guaranteed.



GENERAL

Model	NELSON 42 MKII
Type	motor yacht
LOA (m)	12,75
Beam (m)	3,92
Draft (m)	1,20
Air draft (m)	3,50
Headroom (m)	1,95
Year built	2000
Builder	Halmatic UK & Atlantic Harlingen
Country	The Netherlands
Designer	Arthur Mursell / TT Boat Design
Displacement (t)	13
CE norm	B
Hull material	GRP
Hull colour	blue
Hull shape	round-bilged
Superstructure material	GRP
Rubbing strake	rubber
Deck material	GRP
Deck finish	teak (glued)
Superstructure deck finish	teak
Cockpit deck finish	teak
Window frame	aluminium Gebo
Window material	double glazing
Deckhatch	yes
Portholes	Gebo
Insulation	foam
Mast can be lowered	hydraulic
Fuel tank (litre)	2 x 900
Level indicator (fuel tank)	new installed in 2020 - Raymarine



Freshwater tank (litre)	GRP 1000
Level indicator (freshwater)	new installed in 2020 - Raymarine
Blackwater tank (litre)	stainless steel 290
Blackwater tank extraction	deck extraction + uw line
Level indicator (greywater)	new installed in 2020 - Raymarine
Inside helm position	hydraulic
Outside helm position	hydraulic
More info on hull	Length over all 13,60 meters
Extra info	Deckhatches with screens/blinds, 2 x sliding (normal glass) windows in salon, stainless steel rack on coachroof for accessoires and gangway storage.
Extra info	This Nelson 42MkII was constructed by Halmatic in Great Britain and finished by Atlantic Yard in the Netherlands. So combining the best and it shows.
Extra info	Fuel tanks cleaned 2022.

ACCOMMODATION

Cabins	2
Berths	5
Interior	cherry
Floor	teak and holly
Aft deck	yes
Pilot house/deck saloon	with two sofa's and adjustable table
Headroom saloon (m)	1,95
Heating	Kabola Compact 7 (2015)
Air-conditioning	reverse cycle airco Frigomar (2020)
Chart table	in salon
Aft Cabin	yes
Dining room	dinette opposite galley
Dinette	with single berth (2,10 x 0,60mtr) In salon
Opening door to aft deck	yes
Galley	yes



Countertop	Corian
Sink	stainless steel 2 x
Cooker	ceramic Kenyon 3 burn(220v)
Microwave/oven combi	Sharp (2019)
Fridge	Isotherm
Hot water system	220V + engine 40 ltr (2017)
Water pressure system	electrical
Owners cabin	double bed
Bed length (m)	new mattress (2020) 2,00 x 1,50
Wardrobe	hanging/drawers/shelves
Bathroom	en suite I
Toilet	en suite
Toilet system	electric Planus Smart Marine (2020)
Wash basin	in the bathroom
Shower	en suite
Extra info	vanity table in aftcabin
Guest cabin 1	v-bed
Bed length (m)	2,00 x 0,80
Wardrobe	hanging/drawers/shelves
Bathroom	en suite II
Toilet	en suite
Toilet system	electric Planus Smart Marine (2020)
Wash basin	in the bathroom
Shower	en suite
Washing machine	Candy Aquamatig (4kg)
Extra info	Cleemann dampened pilotseat. Sliding windows in the salon. Upholstery in white; new 2015. Extra kickspace 220v heater in galley

MACHINERY

No of engines	2
Make	Deutz



Type	DTA67-A
HP	286
kW	210.21
Fuel	diesel
Year installed	2004
Maximum speed (kn)	20
Cruising speed (kn)	7
Consumption (l/hr)	13
Engine hours	1500
Engine cooling system	freshwater heat exchanger
Drive	shaft
Engine controls	electrical Morse
Gearbox	mechanical ZF Hurth HSW80
Bowthruster	electric Max Power 180
Sternthruster	electric Vetus 75kgf
Exhaust	watercooled
Propeller type	fixed
Propeller blades	5
Shaft lubrication	water
Manual bilge pump	1 x
Electric bilge pump	4 x
Electrical installation	with remote battery main switches 12/24/220v
Generator	Mastervolt Whisper 6000
Running hours generator	420
Start battery	2 x (2019)
Service battery	6 x (2019)
Generator battery	1 x (2019)
Bowthruster battery	1 x (2019)
Sternthruster battery	1 x (2019)
Battery monitor	Mastervolt
Battery charger	+ Mastervolt 24v/25amp + Mastervolt 12v/15amp Mastervolt 24v/50amp



Inverter	Mastervolt 24v/2500watt
Shorepower	with cable
Insulation transformer	yes
Trimtabs	Bennett
Extra info	Twin filter system with change-over valves. Soft start genset-shorepower switch
Extra info	Wireless remote controle for bow- and stern thruster

NAVIGATION

Compass	yes
Electric compass	Raymarine ST60
Multi control display	Raymarine ST60
Depth sounder	Raymarine ST60
Windset	Raymarine ST60
VHF	with outside vhf set Garmin GHS10i
Autopilot	plus inside repeater Raymarine
Rudder angle indicator	Raymarine ST60
Radar	Furuno
Plotter	Simrad Go XSE + Furuno Navnet
Electronis chart(s)	no
AIS transponder	Class B + Garmin AIS300
Camera	rearview with display
Navigation lights	yes
Searchlight	Jabsco

EQUIPMENT

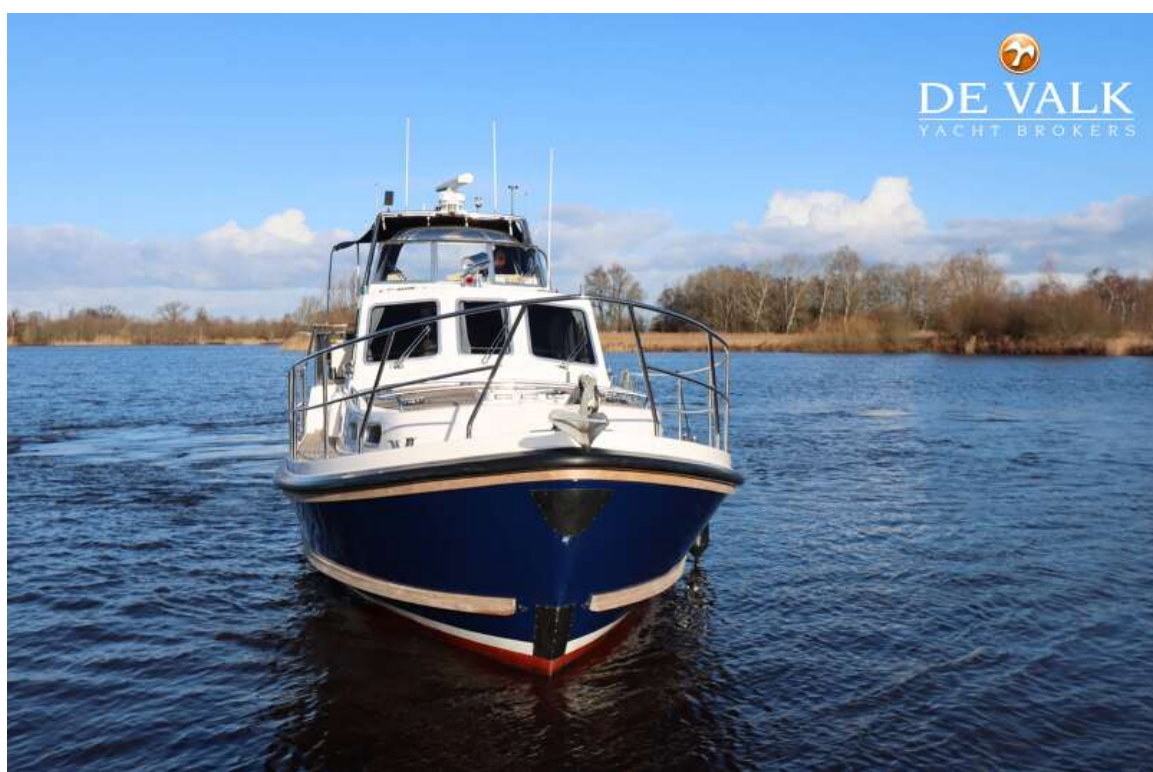
Fixed windscreen	yes
Sprayhood	yes
Cockpit cover	annex bimini
Winter cover	yes
Cockpit table	yes



Bathing platform	yes
Boarding ladder	stainless steel
Gangway	With boardingladder adapter so it can be used in various directions
Anchor	CQR Plough
Anchor chain	30 mtr chain + 40 mtr line
Windlass	electrical Lewmar Concept
Capstan	Lewmar
Sea railing	yes
Grab rail (superstructure)	stainless steel
Railing side opening gates	2 x
Pushpit	yes
Pulpit	yes
Life raft	container Seago
Life raft (pers)	4
Last life raft survey	valid till 02-2025
Lifebuoy	2 x
Wiper	with wiper controlpanel 3 x Vetus
Horn	yes
Fenders	yes
Mooring lines	yes
Radio-cd player	yes
Speakers in salon	yes
Clock - barometer	yes
Fire extinguisher	2 x



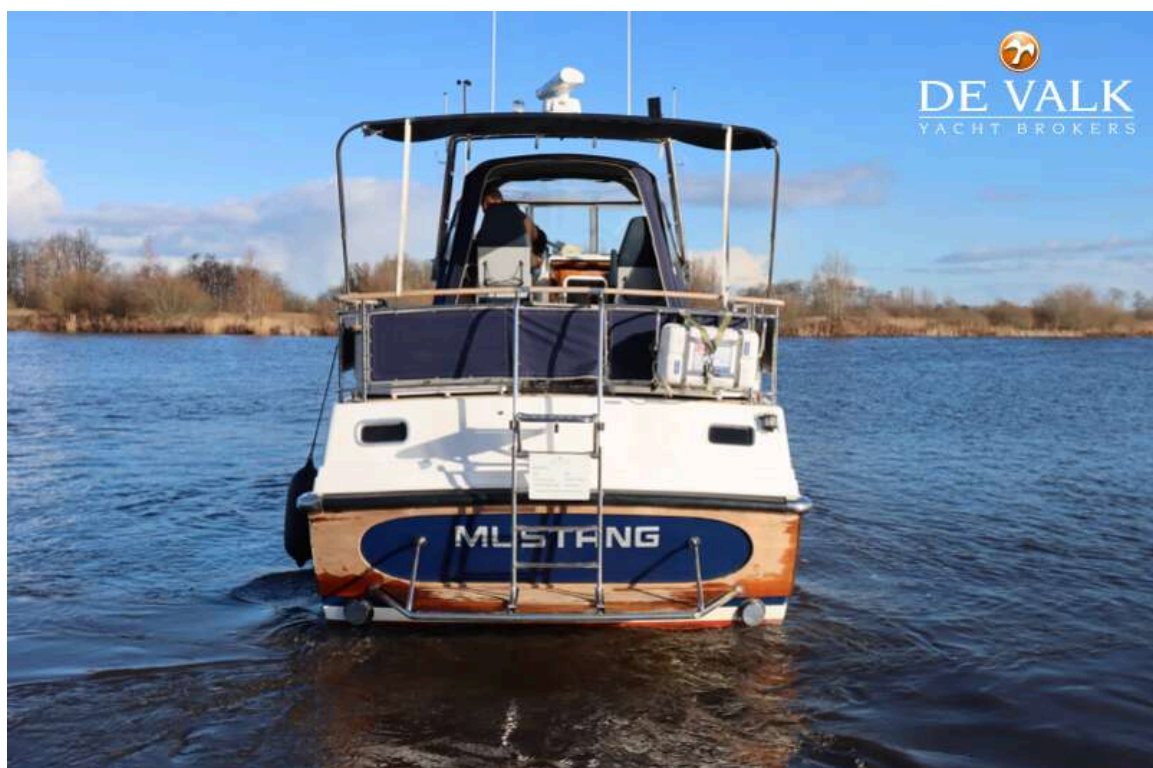
NELSON 42 MKII



NELSON 42 MKII



NELSON 42 MKII



NELSON 42 MKII



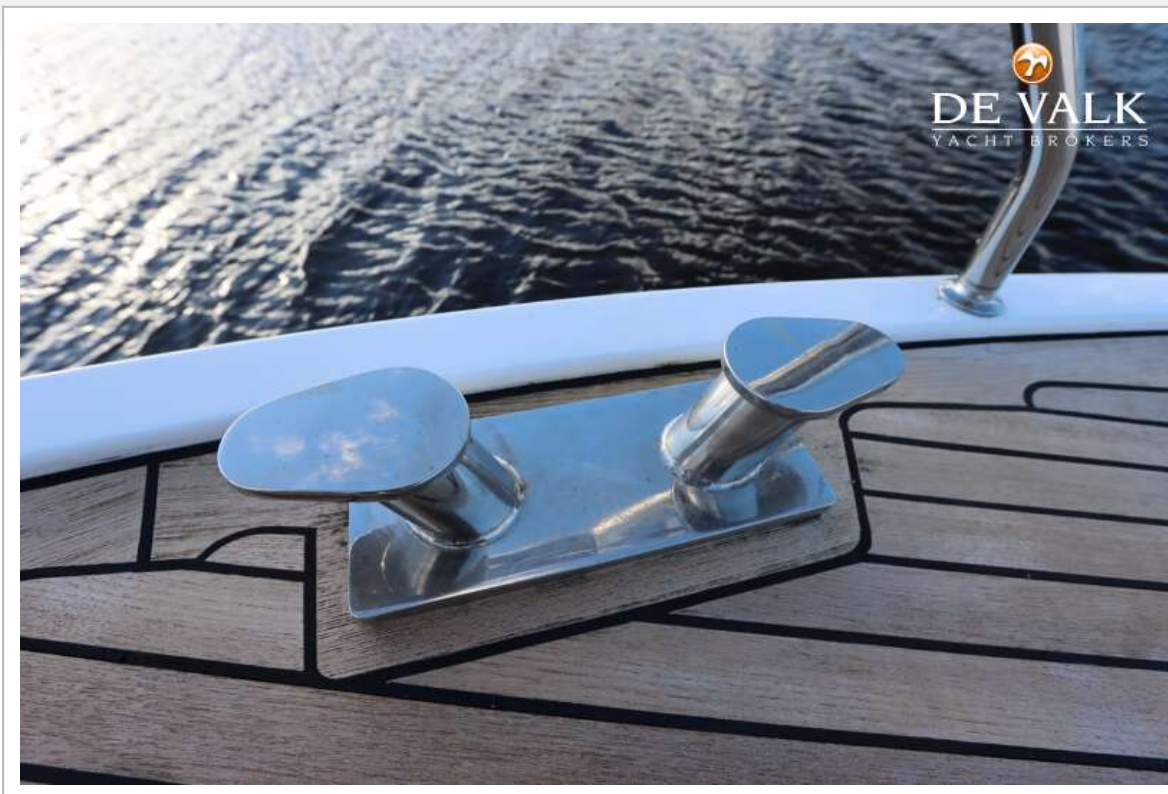
NELSON 42 MKII



NELSON 42 MKII



NELSON 42 MKII



NELSON 42 MKII



NELSON 42 MKII



NELSON 42 MKII



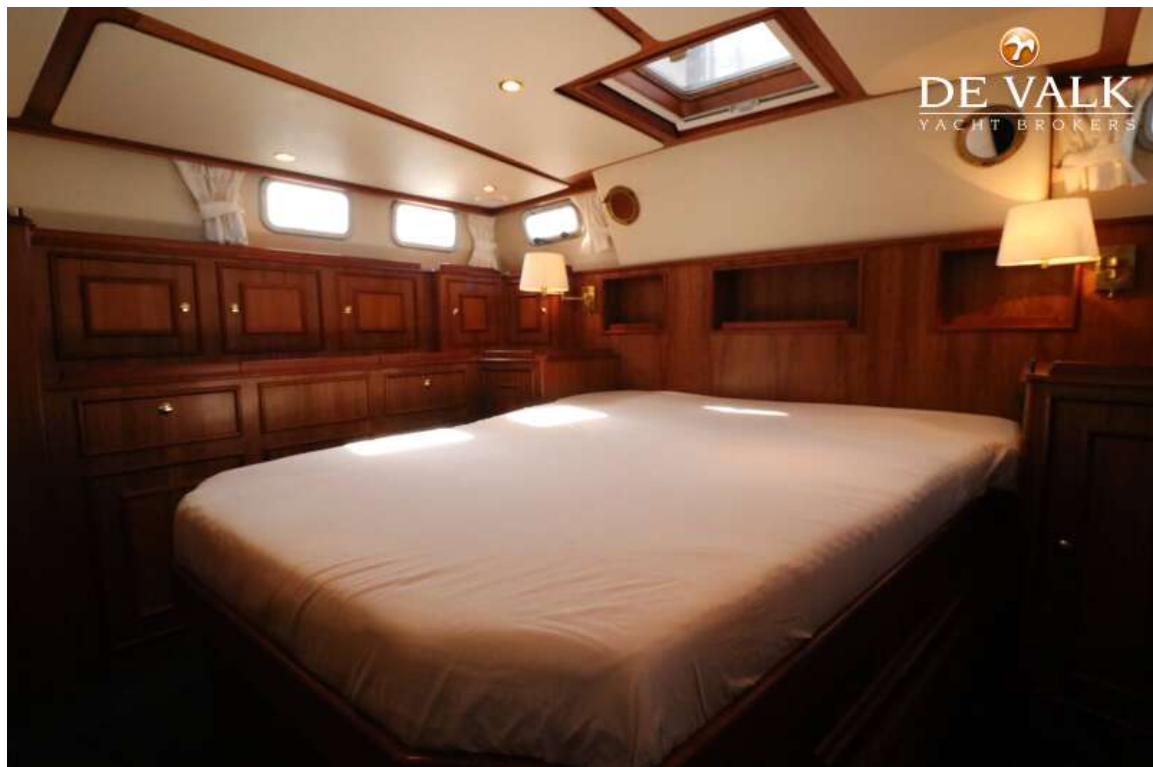
NELSON 42 MKII



NELSON 42 MKII



NELSON 42 MKII



NELSON 42 MKII



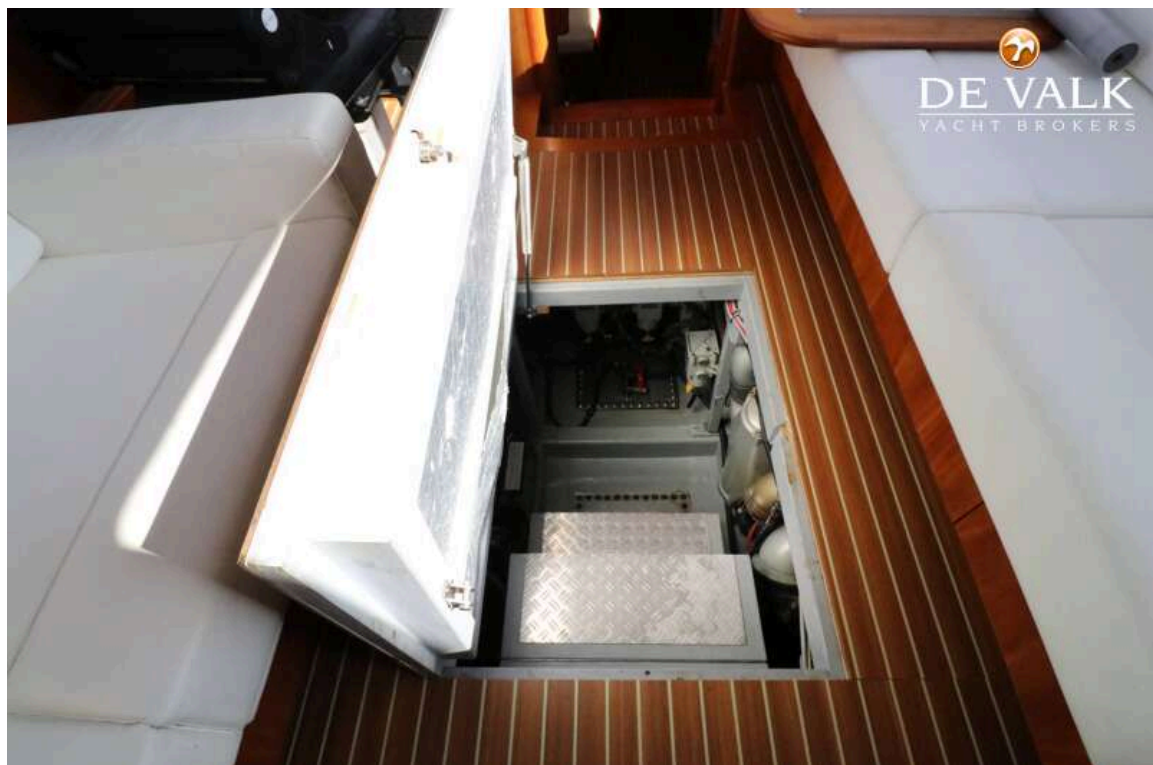
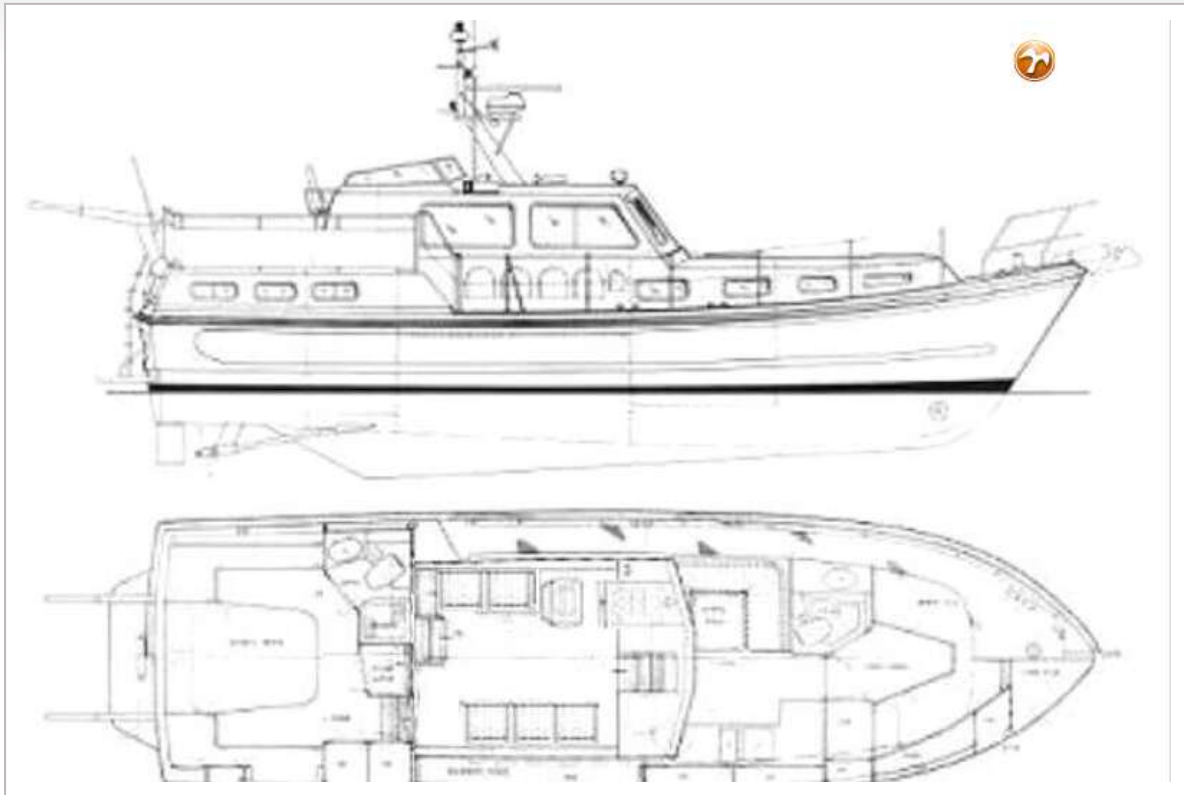
NELSON 42 MKII



NELSON 42 MKII



NELSON 42 MKII



NELSON 42 MKII



NELSON 42 MKII

