



GRANADA 375

BROKER'S COMMENTS

The Granada 375 sails very well, fast and excellent close to the wind. Beautiful Design, Scandinavian quality and teak interior. Lovingly maintained by current (3rd) owner, invested in; Rudder bearing, Gebo deck hatches, Gennaker in 2022. 3 Blade Gori propeller, Rocna anchor, anchor chain, electric windlass, sprayhood, cockpit cover, toilet in 2021. Raymarine Axiom plotter, heater, removable solar panel in 2020. Volvo Penta, refrigerator, stove in 2018. Mainsail, Genoa II in 2015. Steering position in 2012. Harken furling, forestay, main rigging in 2010. Rudder blade, osmosis treated in 2007.

Jan-Ward van Dantzig

SPECIFICATIONS

Dimensions	11.40 x 3.63 x 1.85 (m)	Builder	Granada Yachts
Built	1987	Cabins	2
Material	GRP	Berths	7
Engine(s)	1 x Volvo Penta D1-30B diesel	Hp/Kw	30.00 (hp), 22.08 (kw)
Asking price	sold (VAT)	Lying	contact Sint Annaland

CONTACT

Sales office	De Valk Sint Annaland B.V.	Telephone	+31 (0)166 601 000
Address	Koelhuisweg 4 4697 RM Sint Annaland NL	E-mail	sintannaland@devalk.nl

DISCLAIMER

These particulars are given in good faith as supplied but cannot be guaranteed.



GENERAL

Model	GRANADA 375
Type	sailing yacht
LOA (m)	11,40
Beam (m)	3,63
Draft (m)	1,85
Air draft (m)	17,30
Headroom (m)	1,90
Year built	1987
Builder	Granada Yachts
Country	Denmark
Designer	Christian Rode
Displacement (t)	6,8
Ballast (tonnes)	2,5
Hull material	GRP
Hull colour	white
Hull shape	round-bilged
Keel type	fin keel (cast iron)
Superstructure material	GRP
Deck material	GRP
Deck finish	non-skid paint
Superstructure deck finish	non-skid paint
Cockpit deck finish	teak Needs some minor maintenance
Antifouling (year)	2022
Window frame	aluminium
Window material	tempered glass
Deckhatch	Gebo (New in 2022)
Portholes	aluminium 2 x
Insulation	12 mm Balsa
Radar arch	non collapsible
Fuel tank (litre)	stainless steel 65



Level indicator (fuel tank)	yes
Freshwater tank (litre)	stainless steel 2 x 175
Level indicator (freshwater)	yes
Wheel steering	Solimar Pedestal (2008), stainless steel wheel, leather covered
Outside helm position	rack & pinion
More info on hull	Underwater hull osmosis treatment (2008), no blisters since then
More info on paintwork	yes
Extra info	New through hull fittings and new sea cocks (2008)
Extra info	New and larger stainless steel plates around keel bolts (2019)
Extra info	New Solid Ocume rudder (Modus-2008). New rudder bearing (2022)

ACCOMMODATION

Cabins	2
Berths	7
Interior	teak
Floor	teak and holly
Saloon	yes
Headroom saloon (m)	1,90
Heating	diesel ducted hot air Planar 4D-12-GP 4 kW with several openings (New in 2020)
Heating 2	electric 220V Spiral heating
Chart table	On starboard side
Dinette to convert into berth	yes
Galley	On port side
Countertop	plastic
Sink	stainless steel 1 x
Cooker	calor gas 2 burner (New in 2018)
Oven	New in 2018
Fridge	Top loader fridge (125 L) with a Waeco compressor (New in 2018)
Freezer	Small freezer compartment in the fridge



Water pressure system	electrical
Owners cabin	v-bed
Bed length (m)	2,20 x 2,00
Wardrobe	hanging and shelves
Bathroom	shared
Toilet	shared
Toilet system	manual Jabsco (New in 2021)
Wash basin	in the bathroom Plastic
Guest cabin 1	double bed (in the aft cabin)
Bed length (m)	2,00 x 1,80
Wardrobe	shelves
Extra info	Water tap in galley and bathroom replaced in 2021
Extra info	The foam in starboard saloon seating cushion replaced in 2021

MACHINERY

No of engines	1
Make	Volvo Penta
Type	D1-30B
HP	30
kW	22.08
Fuel	diesel
Year installed	2018
Maximum speed (kn)	7
Cruising speed (kn)	6
Consumption (l/hr)	2,5
Engine hours	730
Engine cooling system	freshwater heat exchanger (2018)
Drive	sail-drive
Saildrive seal	New in 2018
Engine controls	bowden cable Control handle replaced in 2021
Exhaust	watercooled (New in 2018)



Propeller type	folding Gori with Overdrive (New in 2021)
Propeller blades	3
Manual bilge pump	yes
Electric bilge pump	yes
Electrical installation	12 & 220 Volt
Start battery	1 x 70 AH Bosch (New in 2020)
Service battery	1 x 125 AH
Windlass battery	2 x 90 Ah (Also for the fridge)
Battery charger/inverter	Vetus 25 A / 500 W
Solar panel	2x Sunbeam System (on bow) & 1x over sprayhood (removable-2020)
Diode battery combiners	yes
Shorepower	with cable
Extra info	2019 : Deep part of the keel painted in licht grey epoxy
Extra info	Eco Worthy Solar Power Controller (for removable solar panel)
Extra info	Genasun GV10 MPPT Solar Charge Controller 10,5A (other panels)

NAVIGATION

Compass	Plastimo (New in 2018 - with an air bubble)
Depth sounder	Raymarine ST60
Log	Raymarine ST60
Windset	Raymarine ST60
VHF	Icom IC-M505 DSC with Command Mic in the cockpit (all 2016)
Autopilot	Raymarine with wireless remote control (100 Serie)
Radar	Raytheon RL9 (at chart table)
Plotter	Raymarine SLS30 (Slave - at chart table)
Plotter/GPS	Raymarine Axiom E7 HybridTouch in Navpod on pedestal (all 2019)
Electronic chart(s)	1 x CMap NT+
AIS transceiver	Raymarine AIS7 Class B 5 Watt (New in 2019)
Navigation lights	Anchor-, steaming-, bow (LED - New in 2022) and stern (LED)



Extra info	VHF Antenna and all electrical wiring in mast renewed (2019)
Extra info	BackBone cables (2019)

EQUIPMENT

Sprayhood	(New in 2021)
Cockpit cover	(New in 2021)
Sun awning	White
Winter cover	Can be mounted with the mast standing
Cockpit cushions	6 x loose Kapok Navy Blue cushion (New in 2021)
Cockpit table	Removable
Boarding ladder	stainless steel
Deck shower	With cold water
Anchor	Rocna Rocna 15 Kg (New in 2021)
Anchor chain	Lofrans Grade 40 - 50 m - 8 mm galvanised (New in 2020)
Anchor 2	Dredge stern anchor (10 KG) with a rope (2000)
Windlass	electrical Lofrans SX2 with a wire-less remote control (Both new in 2020)
Outboard support	Plasic
Sea railing	stainless steel Double wired
Pushpit	Stainless steel
Pulpit	Stainless steel
Life raft	RFD Seasava Plus R ORC (2001)
Life raft (pers)	container 4
Last life raft survey	2022
Lifejackets	2 x Secumar (automatic) and 2 x orange (old fashion)
Safety harness	2 x (integrated in Secumar lifejackets)
Lifebuoy	1 x
Danbuoy	1 x
Safety lines on deck	yes
Radar reflector	yes
Fenders	yes



Mooring lines	yes
Spare parts	For the engine (filters, impellor, belt)
Radio-cd player	Pioneer
Cockpit speakers	yes
Speakers in salon	yes
Clock - barometer	2 x Clock, 1 x Barometer and 1 x Thermometer
Fire extinguisher	2 x
Latest extinguisher survey	2022
Extra info	Smoke alarm, 3 x fire blanket, gashoses replaced in 2022
Extra info	Cover over steering pedestal (New in 2022)
Extra info	6 x stainless steel clamps (so also amidships)

RIGGING

Rigging	sloop
Standing rigging	wire Fore-stay and main stays renewed in 2010
Brand mast	Isomat
Material mast	aluminium
Spreaders	2 x
Mainsail	Hagoort Sails (2015)
Mainsail cover	(New in 2020)
Fully battened mainsail	Semi-full-battened
Jib I	Lion Sails (old sail)
High aspect	Lion Sails High Aspect Jib (as new)
Genoa II	Hagoort Sails (2015)
Genoa furler	2010: Harken MK IV Furling system
Genoa cover	Blue
Gennaker	M-Sails: blue Gennaker with snuffer (New in 2022)
Spinnaker	Hood Sails: Red/White (approx. 120m2)
Reefing System	slabreefing
Boomvang	Isomat boomvang with a spring
Genoa sheetwinches	2 x Barient 27-48



Halyard winches	2 x Andersen 28
Spinnaker winch	2 x Andersen 46
Winchcovers	2 x (New in 2020)
Spi-pole	aluminium
Isolated backstay	yes
Extra info	Genoa rails and chainplates reinforced (2007)
Extra info	Dyneema mainsail-, genoa- and spinnaker- halyard











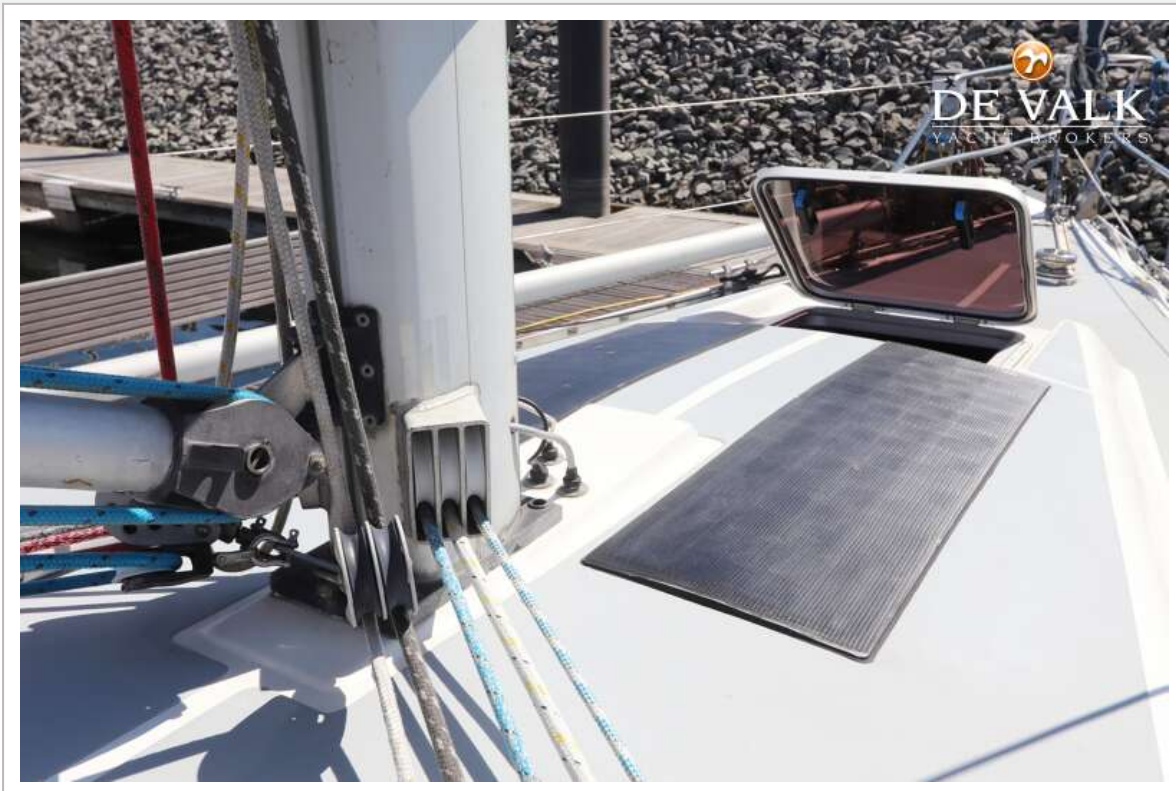
GRANADA 375



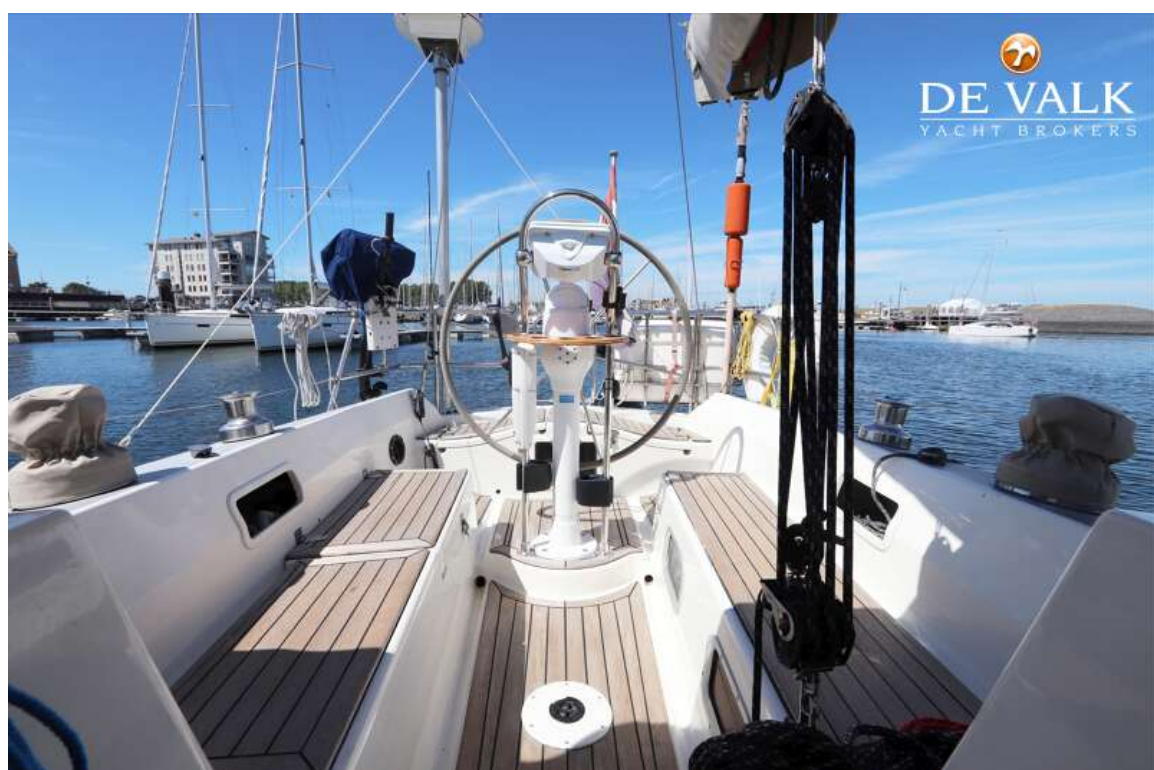
GRANADA 375



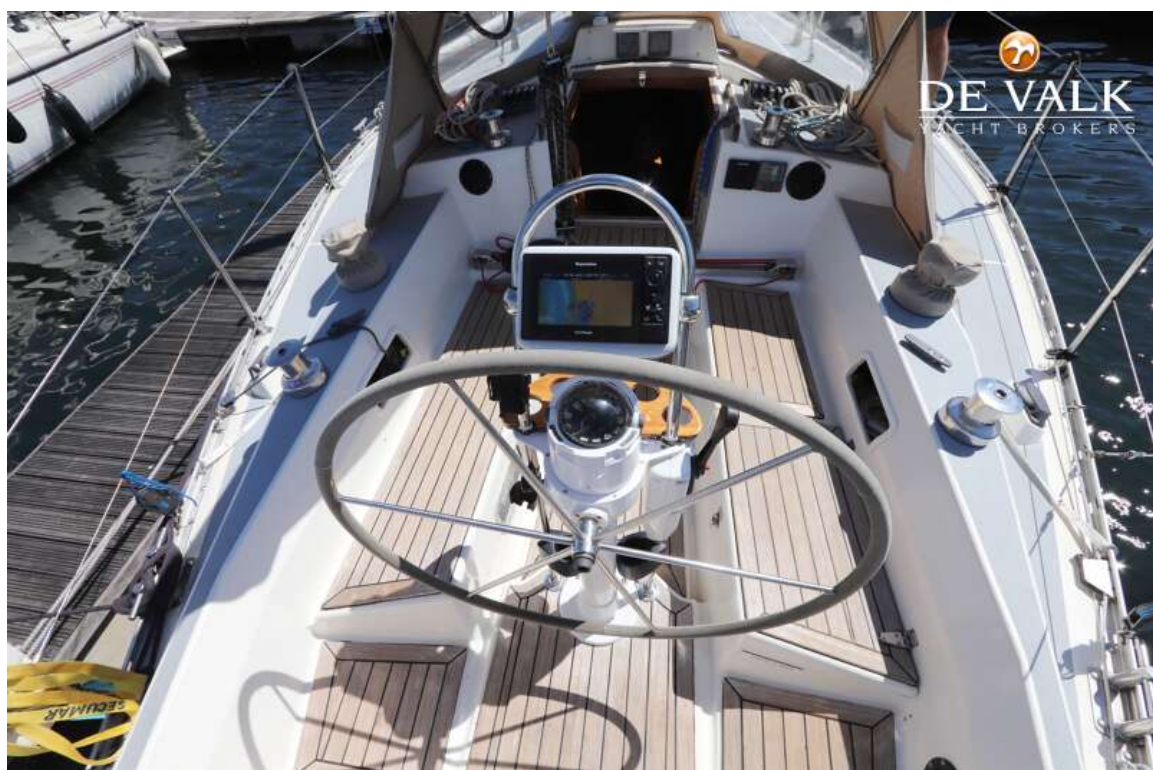
GRANADA 375



GRANADA 375



GRANADA 375



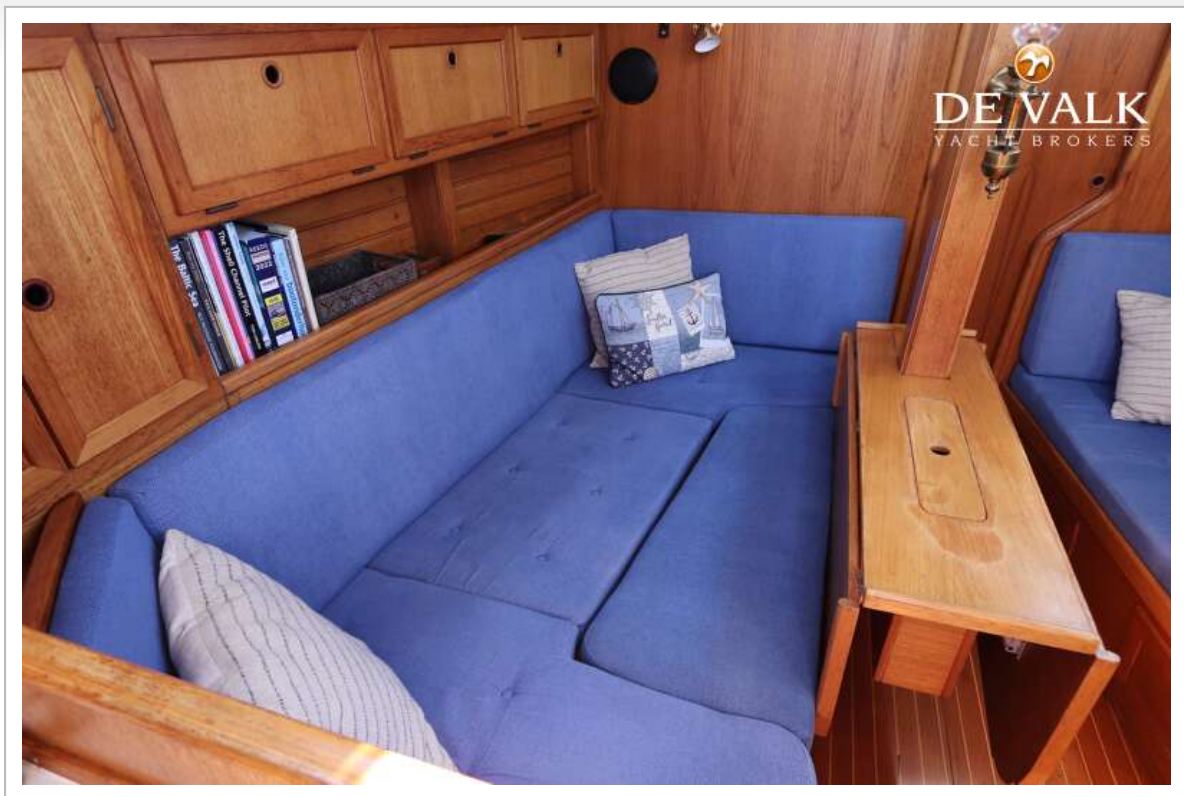
GRANADA 375



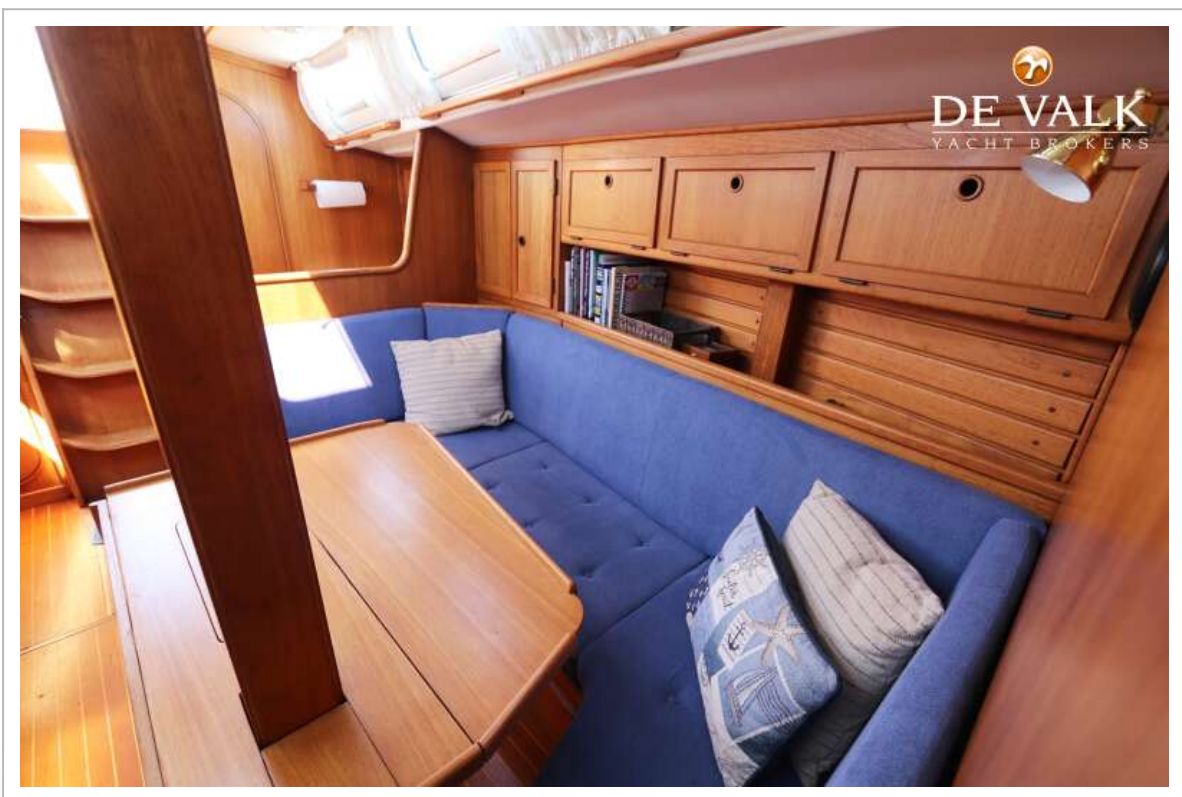
GRANADA 375



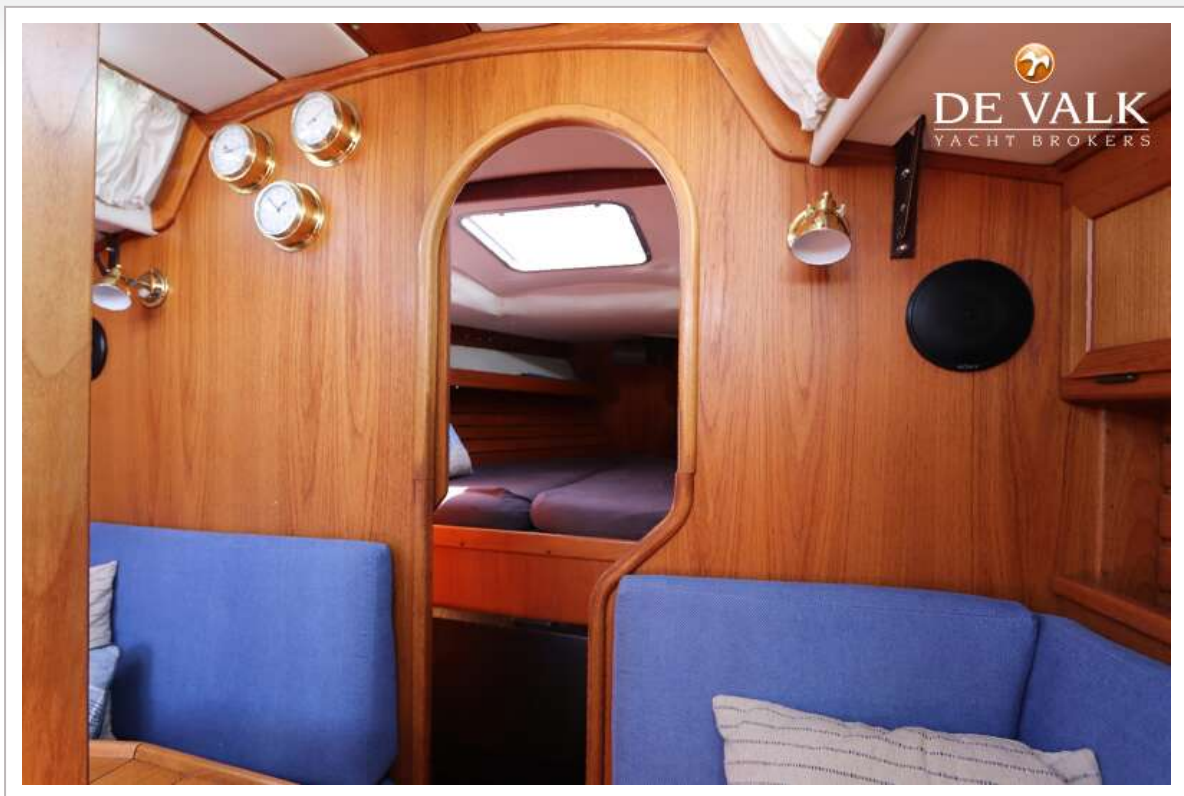
GRANADA 375



GRANADA 375



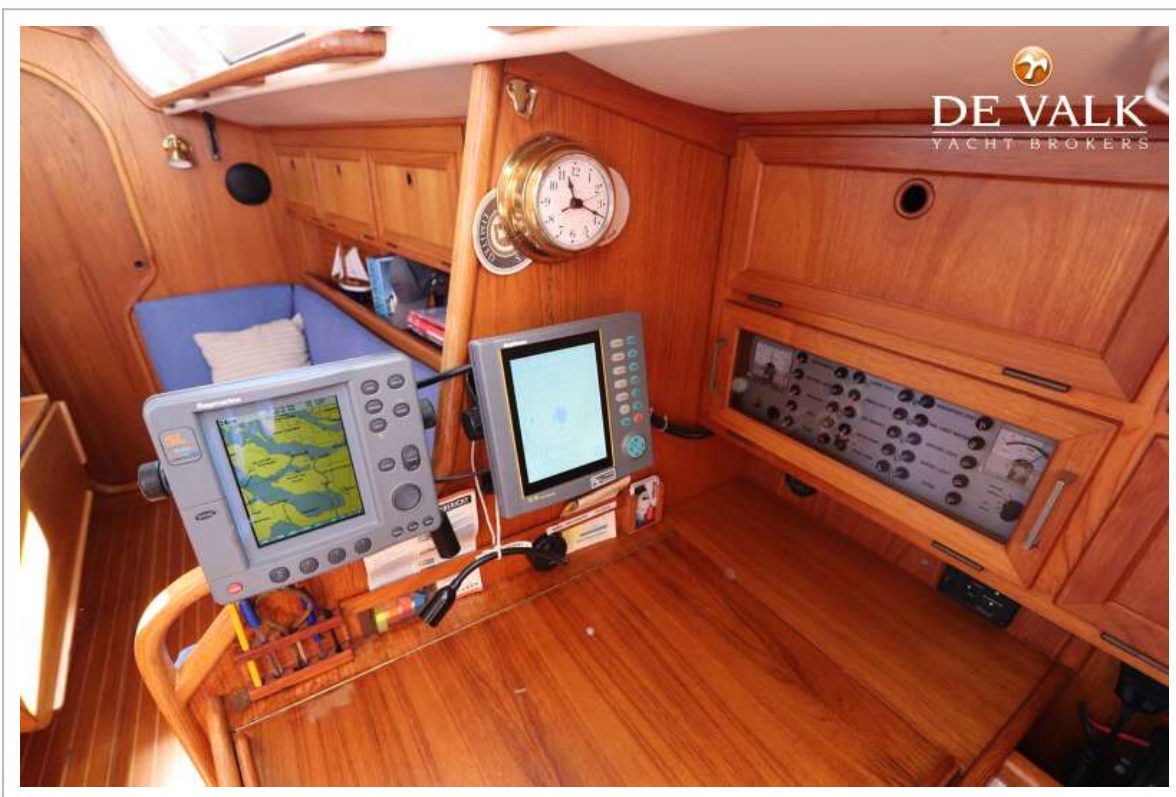
GRANADA 375



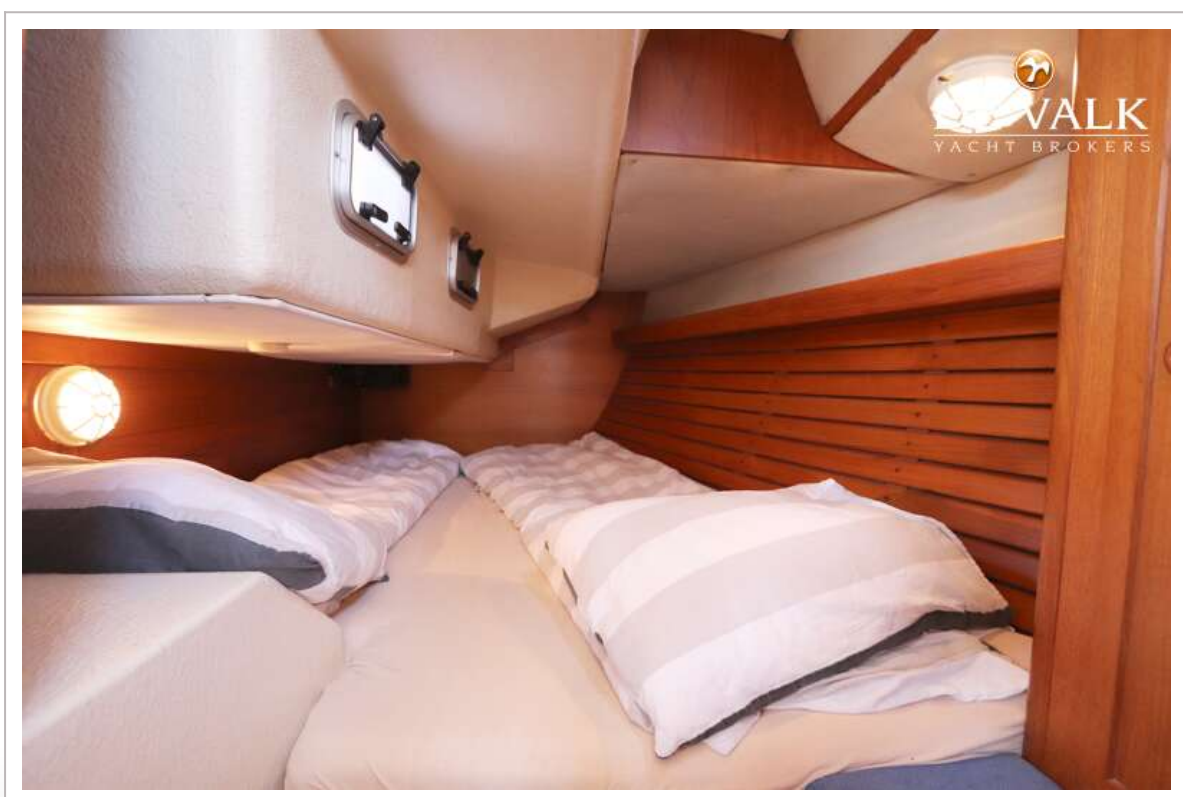
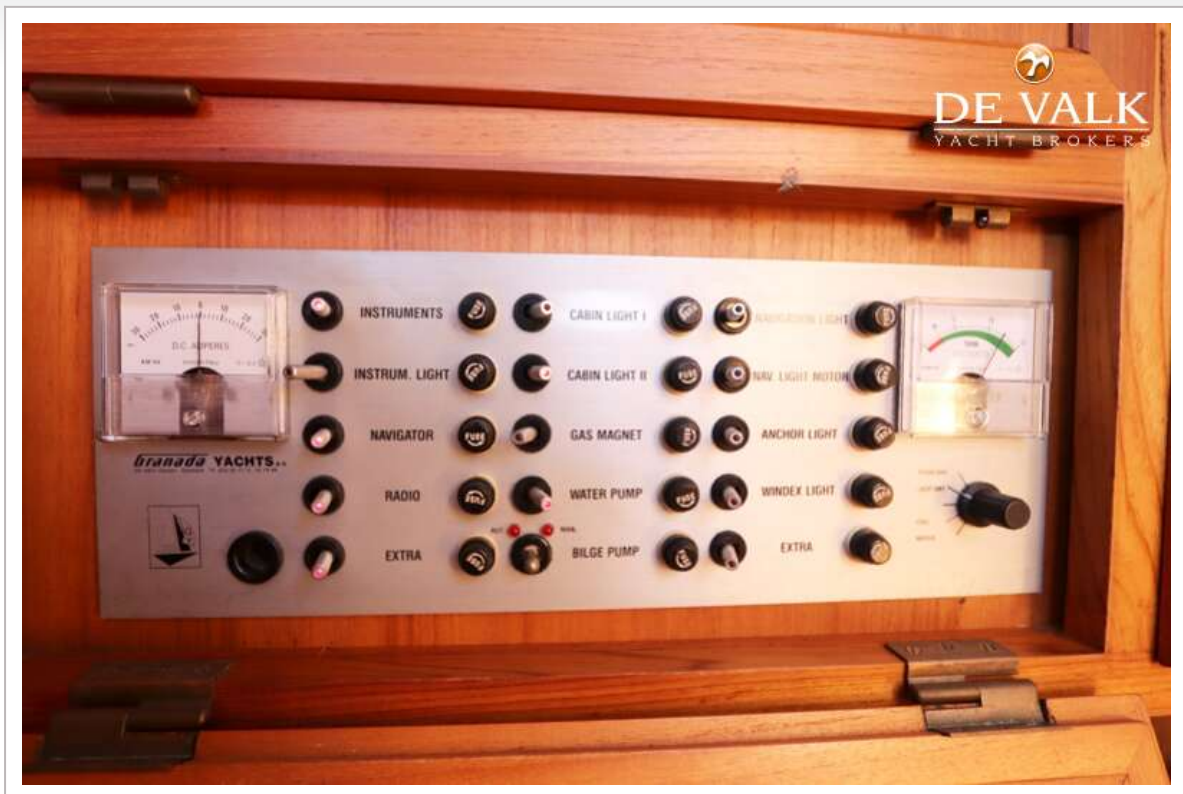
GRANADA 375



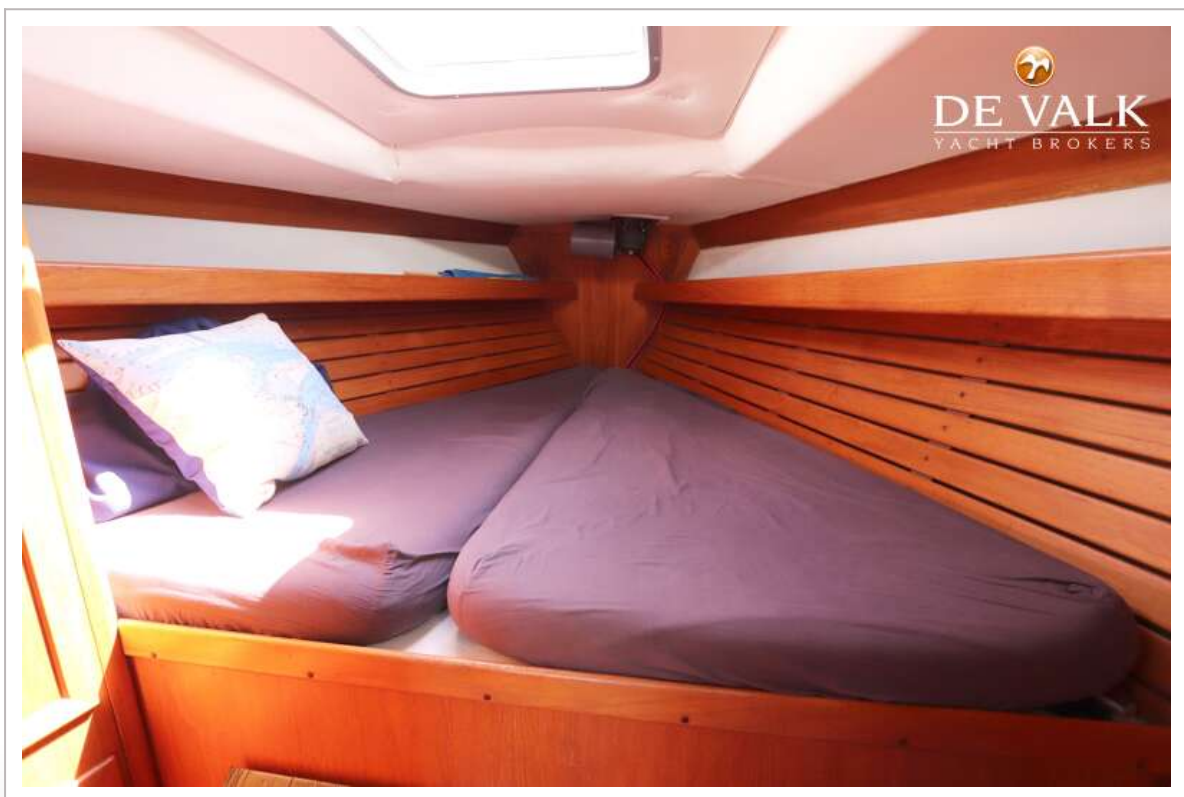
GRANADA 375



GRANADA 375



GRANADA 375



GRANADA 375





