



JEANNEAU SUN ODYSSEY 45



JEANNEAU SUN ODYSSEY 45

BROKER'S COMMENTS

This is perhaps Jeanneau's most successful model, the Sun Odyssey 45. Comfort and safety go together and make the ship ideal for sailing with the family. Easily manageable for two, but also enough space for 6 people on board. A large cockpit, spacious saloon and 2 guest cabins. The owner's cabin has a spacious double bed, easily accessible on both sides. Equipped with a furling mainsail, bow thruster and Bimini for a pleasant stay in the shade. Convince yourself of this ship and make an appointment for a viewing.

Arjen Hoeksma

SPECIFICATIONS

Dimensions	13.72 x 4.37 x 2.05 (m)	Builder	Jeanneau
Built	2007	Cabins	3
Material	GRP	Berths	6
Engine(s)	1 x Yanmar 4JH3-TE	Hp/Kw	75.00 (hp), 55.13 (kw)
Asking price	sold (VAT)	Lying	at sales office

CONTACT

Sales office	De Valk Dalmatia	Telephone	+385 914 567 834
Address	Ul. Velimira Skorpika 22000 Sibenik HR	E-mail	dalmatia@devalk.nl

DISCLAIMER

These particulars are given in good faith as supplied but cannot be guaranteed.



JEANNEAU SUN ODYSSEY 45

GENERAL

Model	JEANNEAU SUN ODYSSEY 45
Type	sailing yacht
LOA (m)	13,72
LWL (m)	11,60
Beam (m)	4,37
Draft (m)	2,05
Air draft (m)	20,00
Year built	2007
Launched	2007
Builder	Jeanneau
Country	France
Designer	Ph Briand / Jeanneau Design
Displacement (t)	9,9
CE norm	A
Hull material	GRP
Hull colour	white
Hull shape	round-bilged
Keel type	bulb keel
Superstructure material	GRP
Rubbing strake	stainless steel
Deck material	GRP
Deck finish	teak
Superstructure deck finish	non-skid moulded in
Cockpit deck finish	teak
Dorades	yes
Window material	polycarbonate
Deckhatch	yes
Portholes	
Fuel tank (litre)	240L
Level indicator (fuel tank)	yes



JEANNEAU SUN ODYSSEY 45

Freshwater tank (litre)	GRP 1x 240L 1x 210L
Level indicator (freshwater)	Liter counter
Blackwater tank (litre)	GRP 1x 85L 1x 50L
Blackwater tank extraction	deck extraction + uw line
Wheel steering	cable steering Lewmar Twin (leather covered)
Emergency tiller	yes

ACCOMMODATION

Cabins	3
Berths	6
Interior	teak
Floor	teak and holly
Saloon	yes
Headroom saloon (m)	1.98m
Heating	Eberspächer 5Kw
Navigation center	yes
Chart table	yes
Dinette	yes
Galley	yes
Countertop	plastic
Sink	stainless steel 2x
Cooker	calor gas ENO 4 burner
Oven	ENO calor gas
Microwave/oven combi	Sharp R-26ST
Fridge	yes
Freezer	yes
Hot water system	220V + engine 40L
Water pressure system	electrical
Owners cabin	double bed
Bed length (m)	2.00 x 1.60m
Wardrobe	hanging/drawers/shelves



JEANNEAU SUN ODYSSEY 45

Bathroom	en suite
Toilet	en suite
Toilet system	manual
Wash basin	in the bathroom
Shower	en suite Electric pump
Guest cabin 1	double bed
Bed length (m)	1,98 x 1,60m
Wardrobe	shelves
Bathroom	en suite
Toilet	en suite
Toilet system	manual
Wash basin	in the bathroom
Shower	en suite Electric pump
Guest cabin 2	double bed
Bed length (m)	1,98 x 1,60m
Wardrobe	shelves
Extra info	Both guest cabins can be divided by a bulkhead

MACHINERY

No of engines	1
Make	Yanmar
Type	4JH3-TE
HP	75
kW	55,13
Year installed	2007
Drive	shaft
Engine controls	bowden cable
Gearbox	Kanzaki
Bowthruster	electric Maxpower 7 HP
Exhaust	watercooled
Propeller type	fixed



JEANNEAU SUN ODYSSEY 45

Propeller blades	3
Shaft lubrication	water
Manual bilge pump	yes
Electric bilge pump	yes
Generator	Onan 2400TRE 4Kw (needs a modification)
Start battery	1x 110Ah (2021)
Service battery	3x 110Ah (2018)
Bowthruster battery	2x (2018)
Battery monitor	yes
Battery charger	Cristec 60A
Shorepower	with cable

NAVIGATION

Compass	2x
Depth sounder/log	yes
Windset	Raymarine ST60 both steering wheels
VHF	2x Raymarine 240E DSC
VHF handheld	Icom IC-M31
Autopilot	Raymarine ST6002
Radar	Raymarine 2Kw in mast
GPS	yes
Plotter/GPS	1x Raymarine E120 inside, 1x Raymarine E80 outside
Navtex	Furuno NX-300
AIS receiver	Garmin
AIS transceiver	Garmin
Navigation lights	yes

EQUIPMENT

Sprayhood with grab rail	2021
Bimini	yes
Cockpit cushions	yes



JEANNEAU SUN ODYSSEY 45

Cockpit table	yes
Boarding ladder	stainless steel
Deck shower	yes
Anchor	Cobra 25kg
Anchor chain	100 meter galvanized
Windlass	Quick 1000W, overhauled 2021
Dinghy	
Outboard	Suzuki 6 HP, 4 stroke
Outboard support	yes
Lifejackets	8x inflatable
Radar reflector	yes
Fenders	yes
Mooring lines	yes
TV	Flatscreen 20
TV receiver	Glomex TV antenna
Radio-cd player	Alpine
Cockpit speakers	yes
Speakers in cabin	yes

RIGGING

Rigging	sloop
Standing rigging	wire
Brand mast	Z-spar
Material mast	aluminium
Spreaders	2
Mainsail	yes
Stoway mast	yes
Genoa	yes
Genoa furler	yes
Reefing System	main in-mast furling
Boomvang	mechanical and tackle



JEANNEAU SUN ODYSSEY 45

Primary sheet winch

2x on coachroof, Harken ST44, 1x electric

Genoa sheetwinches

2x Harken ST53, both electric



JEANNEAU SUN ODYSSEY 45



JEANNEAU SUN ODYSSEY 45



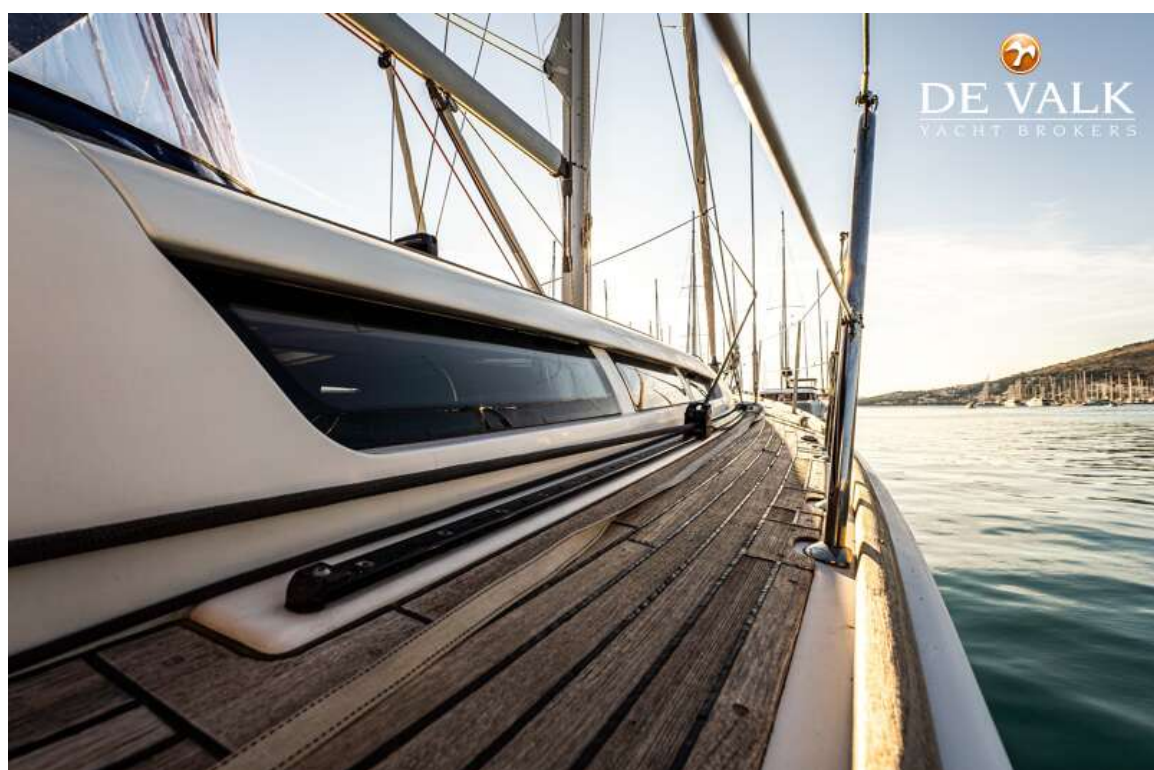
JEANNEAU SUN ODYSSEY 45

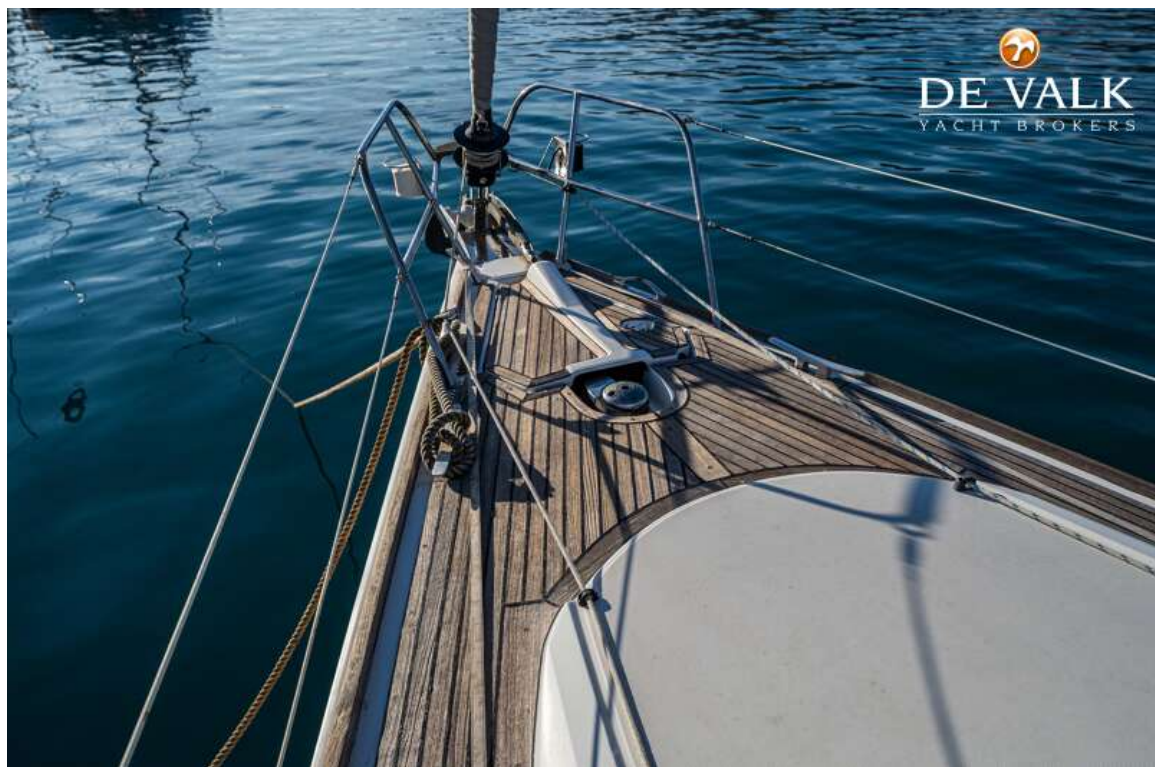
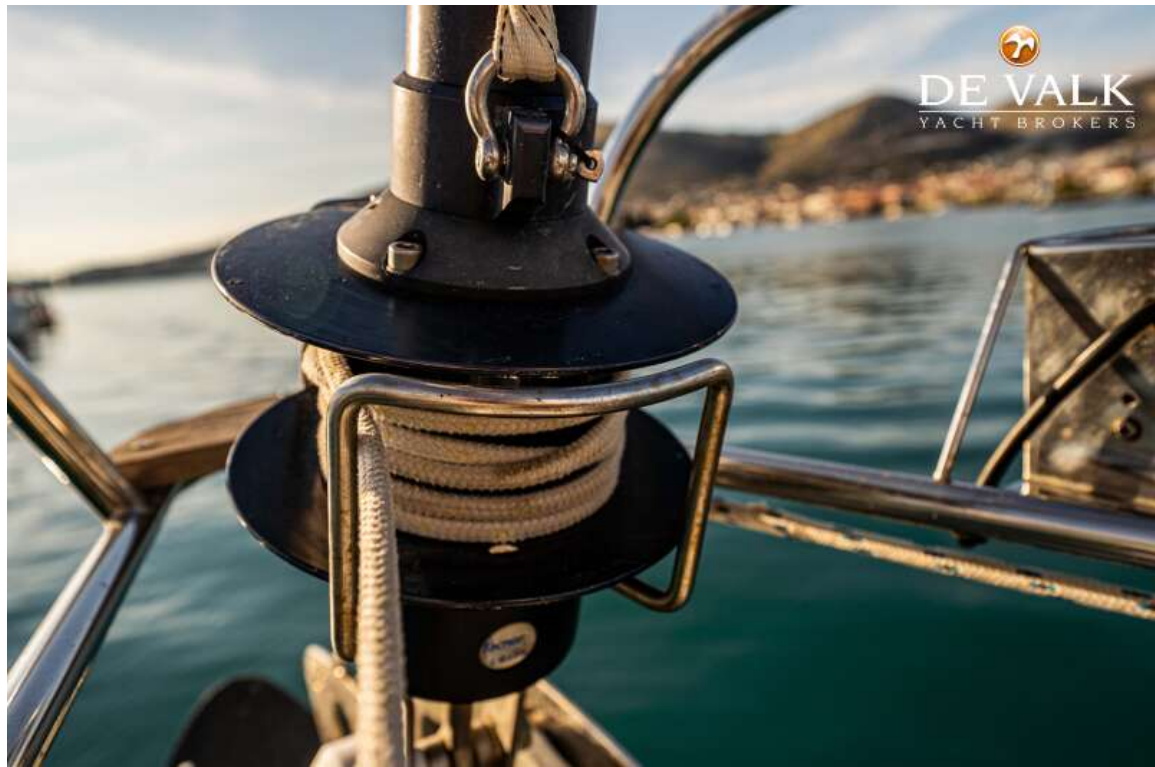


JEANNEAU SUN ODYSSEY 45



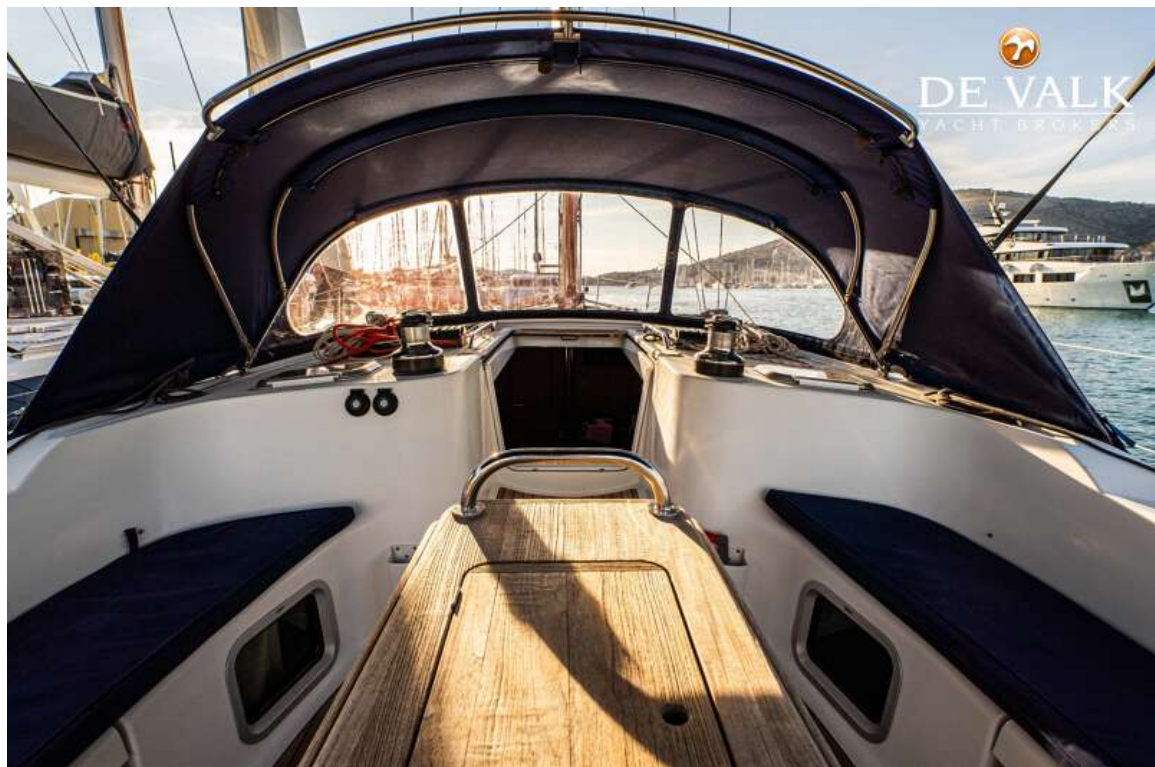
JEANNEAU SUN ODYSSEY 45







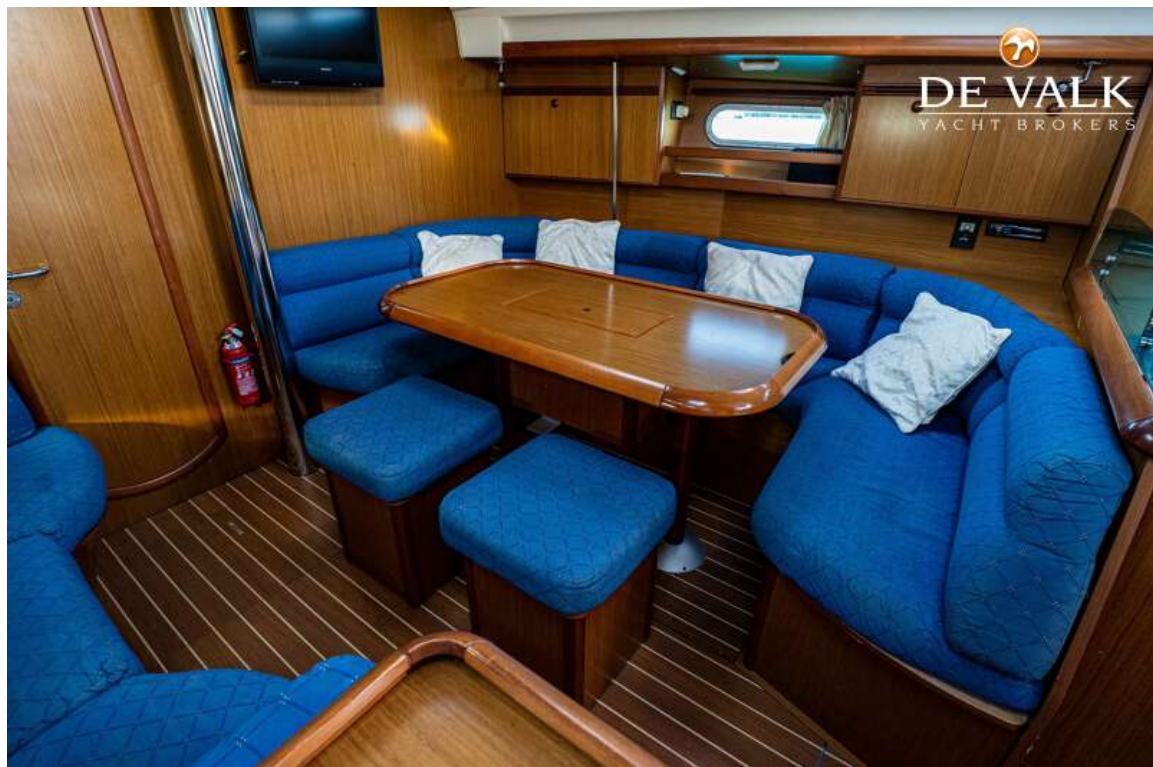
JEANNEAU SUN ODYSSEY 45

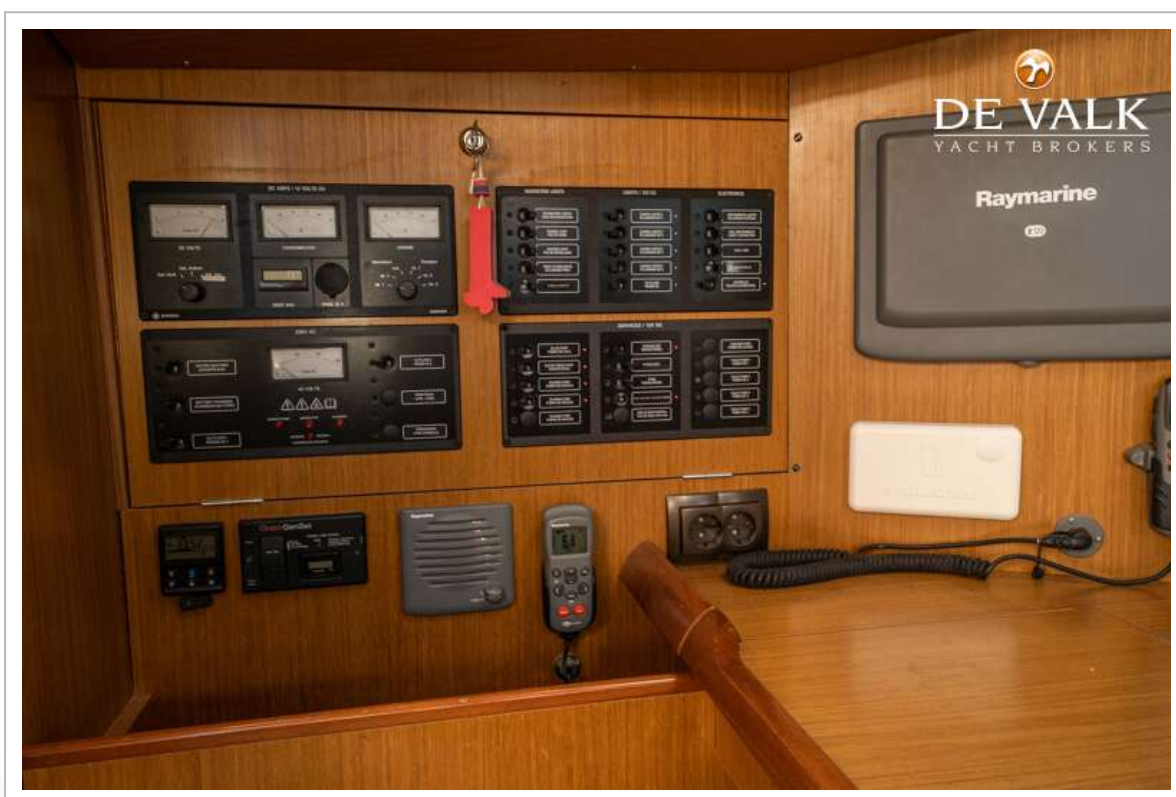


JEANNEAU SUN ODYSSEY 45

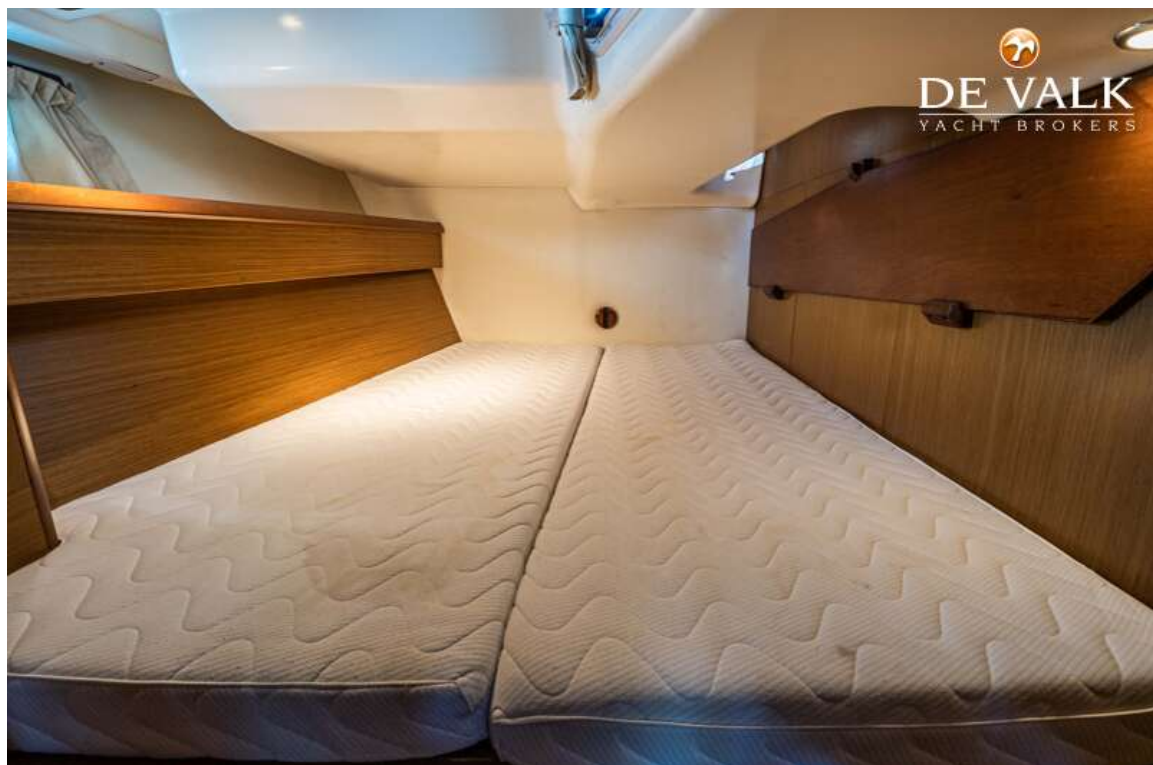
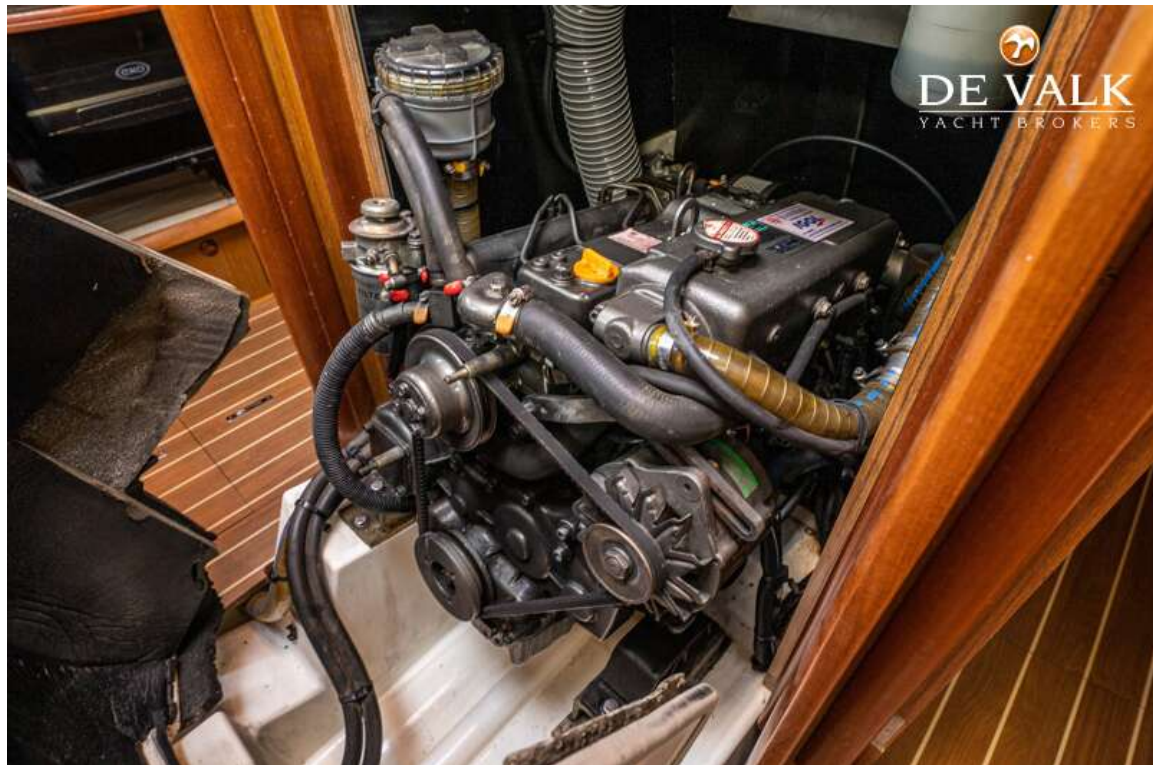


JEANNEAU SUN ODYSSEY 45

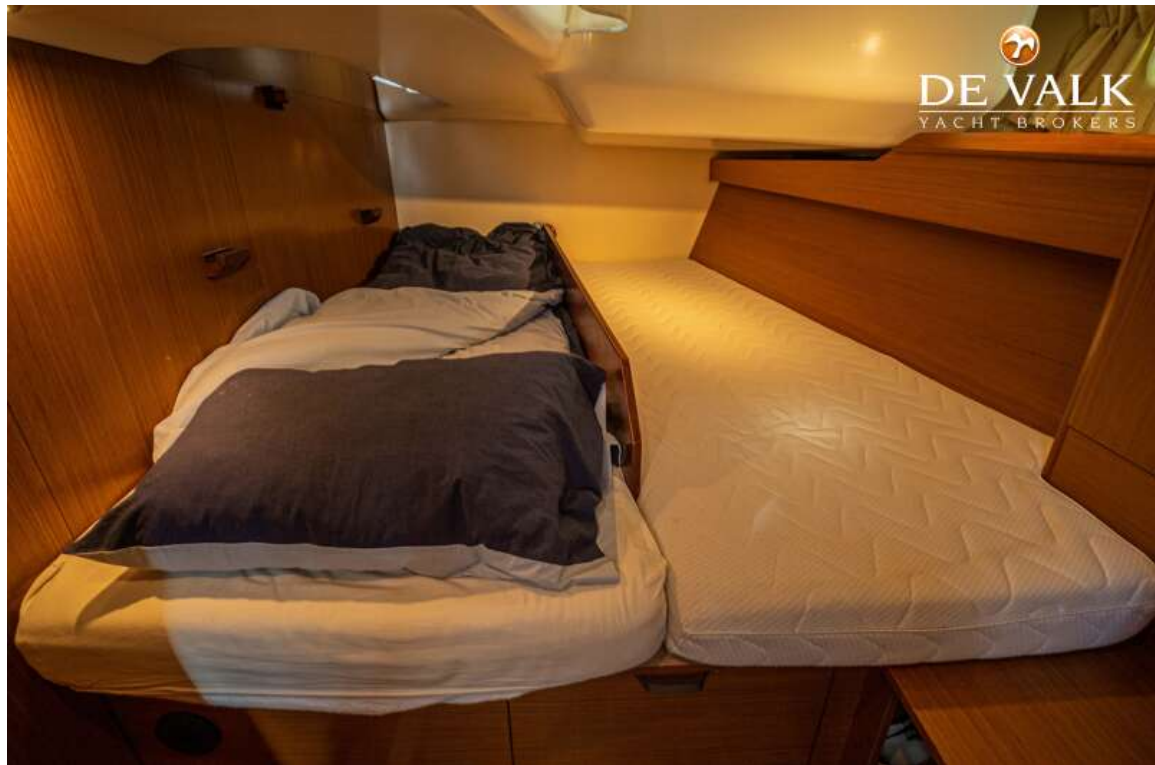




JEANNEAU SUN ODYSSEY 45



JEANNEAU SUN ODYSSEY 45



JEANNEAU SUN ODYSSEY 45

