



DE VALK
YACHT BROKERS



CONTEST 40S



DE VALK
YACHT BROKERS

BROKERAGE | CHARTER | BERTHS | FINANCE | INSURANCE | YACHT MANAGEMENT

CONTEST 40S

BROKER'S COMMENTS

Cruising at it's best, the Contest range is suited just for that. Space, comfort, reliability and quality in construction and finishing, the Contest 40S has it all. Coming on board, you will be pleasantly surprised on what this Contest 40S model has to offer. Two cabins with en suite facilities for optimum privacy and comfort. Sailing and handling is safe and reliable from the centre cockpit which gives also shelter in adverse conditions. With the wing keel she offers shallow draft but still good sail performance. And it opens up lots of sail areas.

Joris van de Rijt

SPECIFICATIONS

Dimensions	12.00 x 3.85 x 1.70 (m)	Builder	Conyplex - Medemblik
Built	1994	Cabins	2
Material	GRP	Berths	4
Engine(s)	1 x Volvo Penta MD22A diesel	Hp/Kw	59.00 (hp), 43.37 (kw)
Asking price	sold (VAT)	Lying	at sales office

CONTACT

Sales office	De Valk Sint Annaland B.V.	Telephone	+31 (0)166 601 000
Address	Koelhuisweg 4 4697 RM Sint Annaland NL	E-mail	sintannaland@devalk.nl

DISCLAIMER

These particulars are given in good faith as supplied but cannot be guaranteed.



GENERAL

Model	CONTEST 40S
Type	sailing yacht
LOA (m)	12,00
LWL (m)	10,00
Beam (m)	3,85
Draft (m)	1,70
Air draft (m)	19,00
Headroom (m)	1,99
Year built	1994
Builder	Conyplex - Medemblik
Country	The Netherlands
Designer	Dick Zaal
Displacement (t)	11
Ballast (tonnes)	4.8
CE norm	NA
Hull material	GRP
Hull colour	blue (Polished and waxed 11-2020)
Hull shape	round-bilged
Keel type	wing keel
Superstructure material	GRP
Rubbing strake	wood
Deck material	GRP
Deck finish	teak
Superstructure deck finish	teak
Cockpit deck finish	teak
Antifouling (year)	11-2020
Window frame	aluminium Gebo
Window material	perspex
Deckhatch	Gebo (2014)
Portholes	Gebo



Fuel tank (litre)	stainless steel 250
Level indicator (fuel tank)	yes
Freshwater tank (litre)	stainless steel 500
Level indicator (freshwater)	yes
Blackwater tank (litre)	polyethylene 60
Blackwater tank extraction	deck extraction + uw line
Wheel steering	rack & pinion Whitlock
Emergency tiller	yes

ACCOMMODATION

Cabins	2
Berths	4
Interior	teak
Floor	teak and holly
Saloon	yes
Headroom saloon (m)	1,99
Heating	central heating Webasto Top C 5,2kW (2019)
Navigation center	yes
Chart table	yes
Aft Cabin	yes
Dinette	yes
Galley	yes
Countertop	plastic
Sink	stainless steel
Cooker	calor gas Techimpex 3 burner
Oven	Techimpex
Fridge	Frigomatic 12v (with freezer compartment)
Hot water system	220V + engine Boiler element replaced in 2016
Water pressure system	electrical
Owners cabin	double bed
Bed length (m)	1,97 x 1,35



Wardrobe	hanging and shelves
Bathroom	en suite I
Toilet	en suite
Toilet system	manual
Wash basin	in the bathroom
Shower	separate
Guest cabin 1	v-bed + fill-in piece
Bed length (m)	2,00 x 0,70
Wardrobe	hanging and shelves
Bathroom	en suite II
Toilet	en suite
Toilet system	manual
Wash basin	in the bathroom
Shower	en suite
Extra info	Upholstery new 2011

MACHINERY

No of engines	1
Make	Volvo Penta
Type	MD22A
HP	59
kW	43,37
Fuel	diesel
Year installed	1994
Maximum speed (kn)	8
Cruising speed (kn)	7
Consumption (l/hr)	3,5
Engine hours	3400
Engine cooling system	freshwater heat exchanger
Drive	shaft
Shaft seal	yes



Engine controls	bowden cable
Gearbox	mechanical
Bowthruster	electric Sleipner SP95T/6kW
Exhaust	watercooled
Propeller type	fixed
Propeller blades	3
Propeller shaft material	stainless steel
Shaft lubrication	water
Manual bilge pump	yes
Electric bilge pump	yes
Electrical installation	12V / 220V
Start battery	1 x (2017)
Service battery	2 x (2017)
Bowthruster battery	1 x (2020)
Battery charger	Victron Pallas 12v/50amp
Shorepower	with cable
Extra info	Volvo engine hour display defect
Extra info	Renewals on main engine.

NAVIGATION

Compass	Whitlock Polaris
Electric compass	Via autopilot
Depth sounder	Raymarine I70 (2019)
Log	Raymarine I70 (2019)
Windset	Raymarine I70 (2019)
VHF	Navman VHF7100
Autopilot	Raymarine I70 (2019)
Rudder angle indicator	Via autopilot
Radar	Raymarine (2014)
GPS	Furuno GP32 Waas
Plotter	Raymarine Hybrid Touch (2016)



Navtex	Navcode (not installed)
Electronic chart(s)	1 x
Navigation lights	yes

EQUIPMENT

Fixed windscreen	yes
Sprayhood	(2008)
Cockpit table	yes
Bathing platform	yes
Boarding ladder	stainless steel
Deck shower	Hot + cold
Anchor	Bruce
Anchor chain	Approx. 50 mtr
Windlass	electrical S&L
Capstan	S\$L
Outboard support	yes
Sea railing	wire
Grab rail (superstructure)	teak
Pushpit	yes
Pulpit	yes
Life raft	valise (or bag)
Life raft (pers)	6
Last life raft survey	(2016)
Fenders	yes
Mooring lines	yes
Radio-cd player	yes
Speakers in salon	yes
Fire extinguisher	(2016)

RIGGING

Rigging	sloop
---------	-------



Standing rigging	wire (2014)
Brand mast	VMG Soromap (2014)
Material mast	aluminium coated
Spreaders	2 x 2
Mainsail cover	yes
Battcars	yes
Fully battened mainsail	UK Sails (2014)
High aspect	yes
Genoa	Bi-radial cut (2008) + uv strip
Genoa furler	Harken (2014)
Genoa cover	yes
Reefing System	quick-one-line-reefing With Dutchman system
Backstay adjuster	mechanical
Boomvang	gasspring Forespar (2014)
Genoa sheetwinches	2 x Lewmar 54ST
Halyard winches	2 x Lewmar 44ST
Multifunctional winches	1 x Lewmar
Spi-pole	aluminium
Extra info	Running rigging replaced (2014)



CONTEST 40S



CONTEST 40S



CONTEST 40S



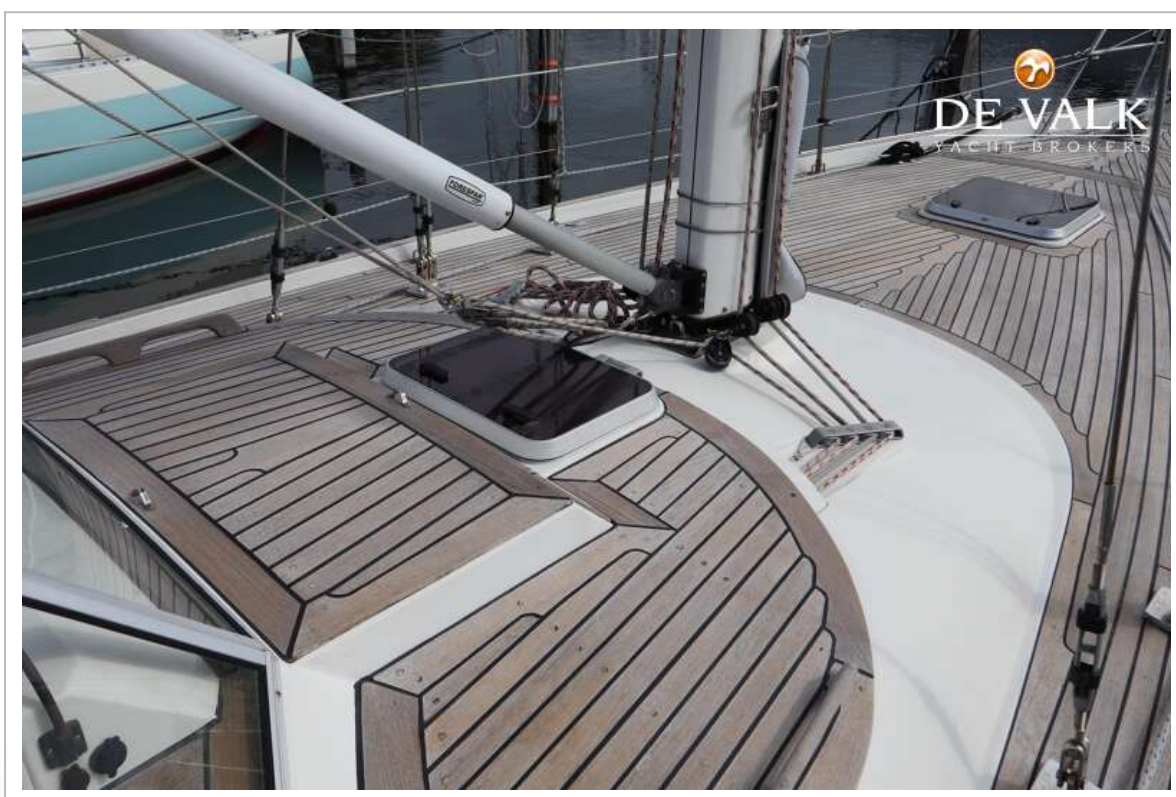
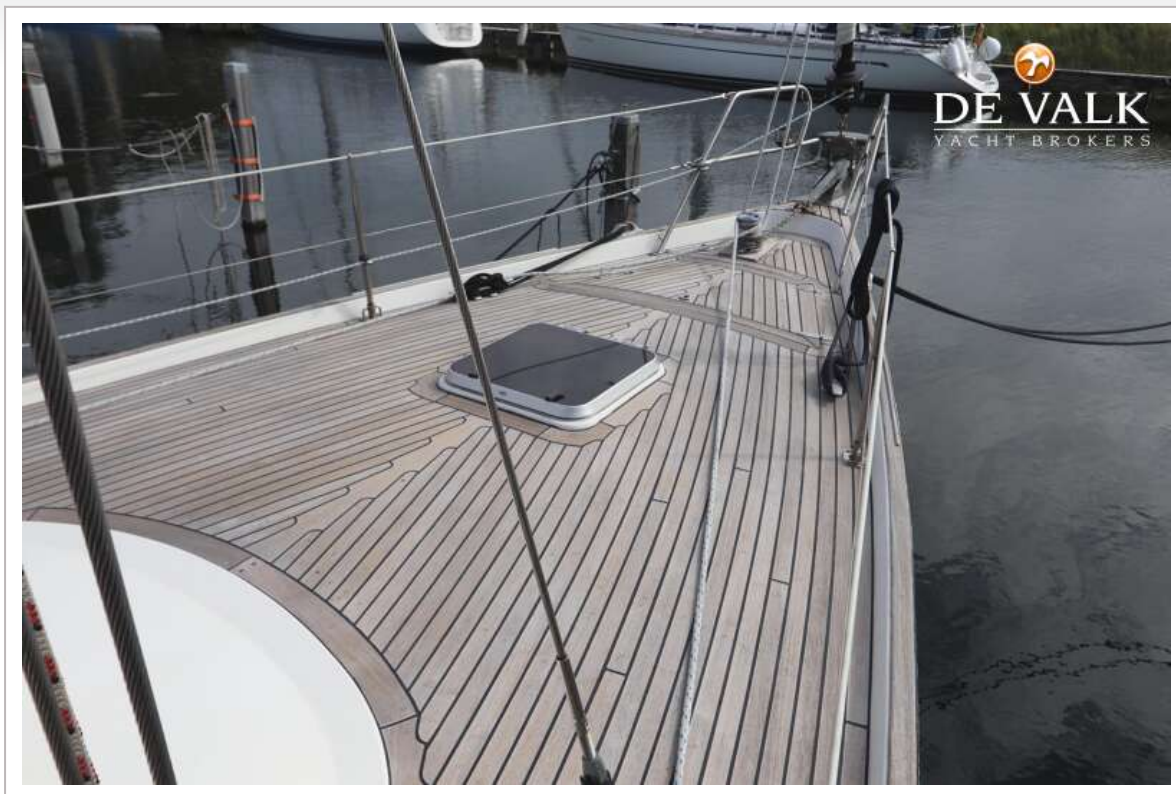
CONTEST 40S



CONTEST 40S



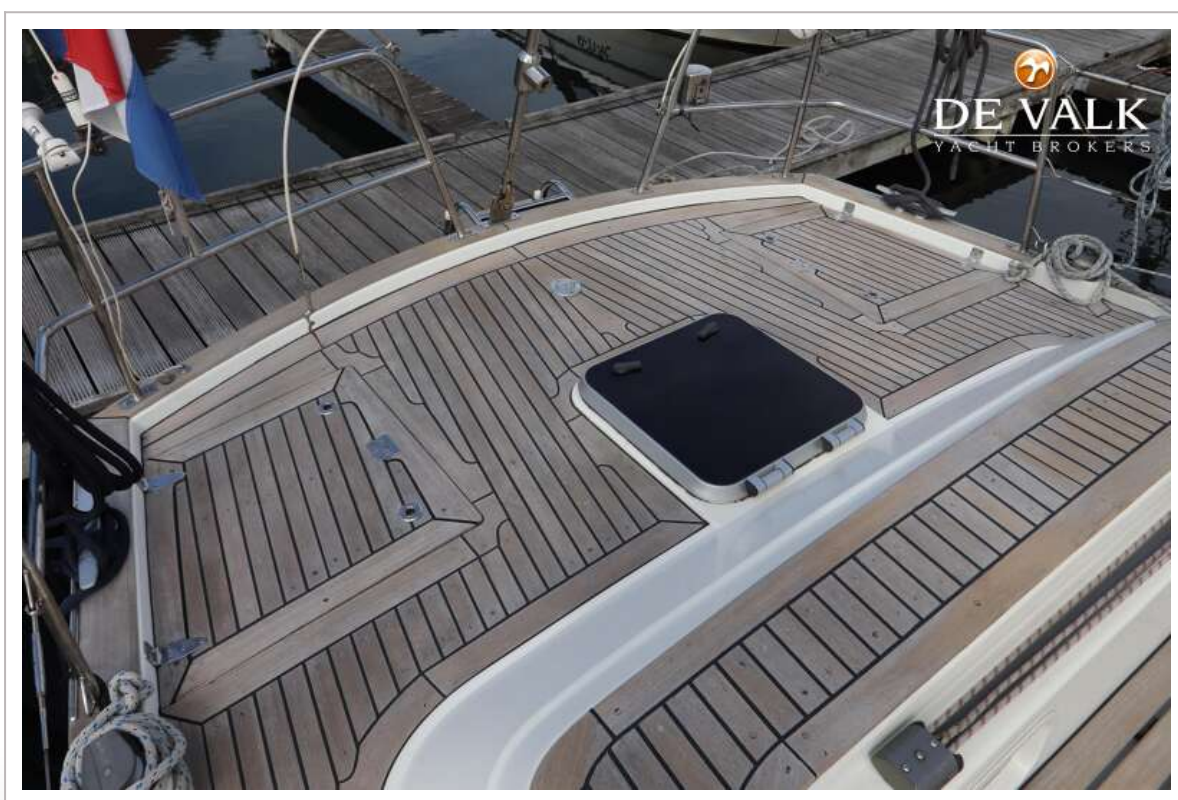
CONTEST 40S



CONTEST 40S



CONTEST 40S



CONTEST 40S



CONTEST 40S



CONTEST 40S



CONTEST 40S



CONTEST 40S



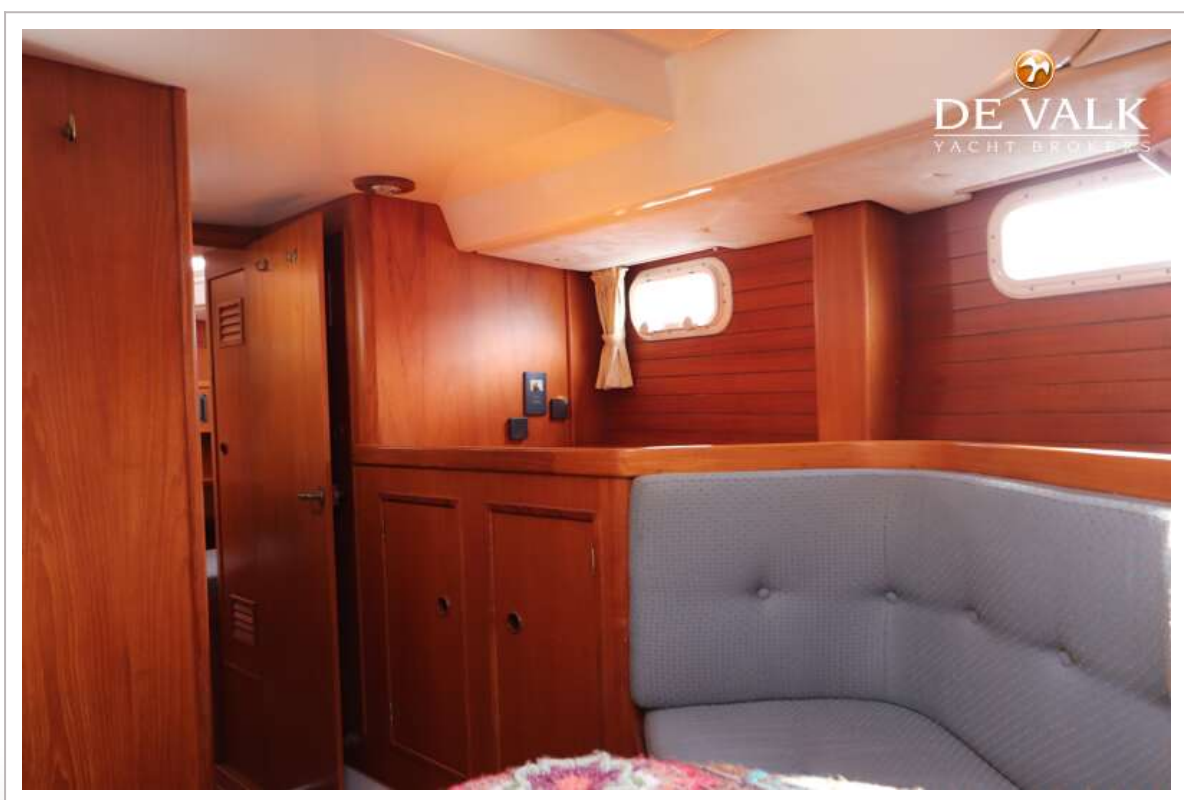
CONTEST 40S



CONTEST 40S



CONTEST 40S



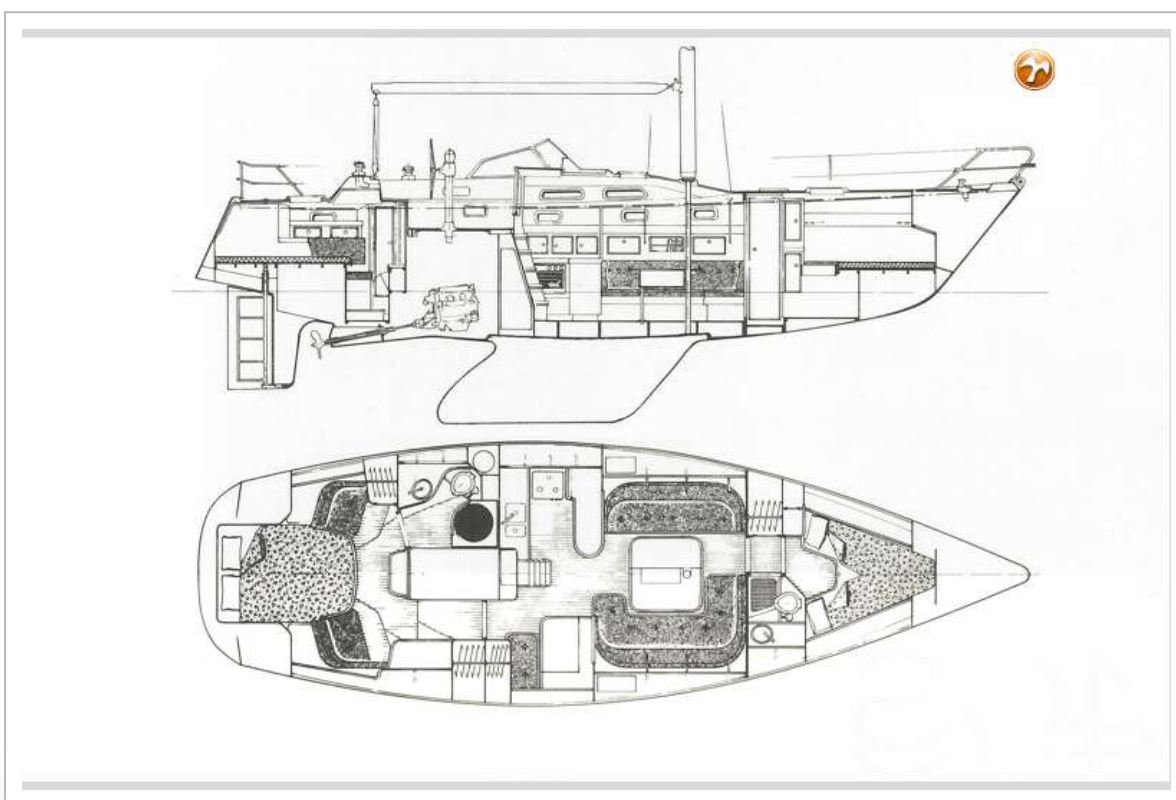
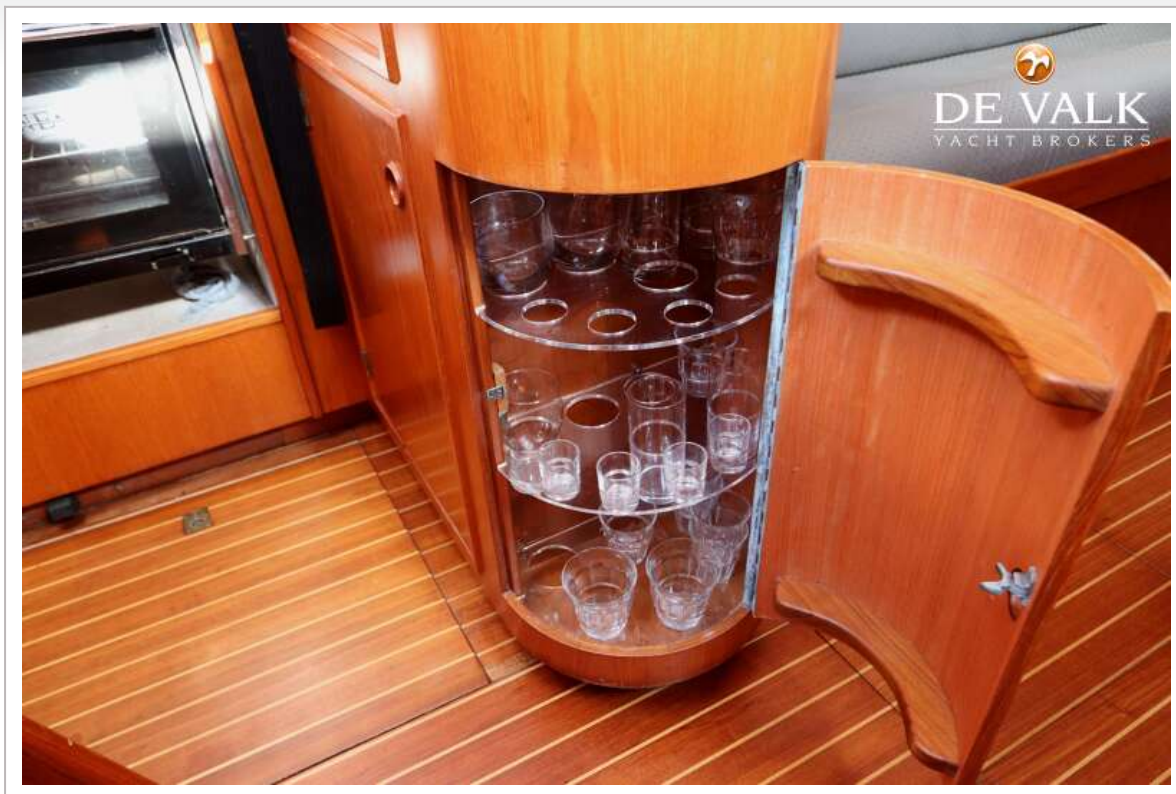
CONTEST 40S



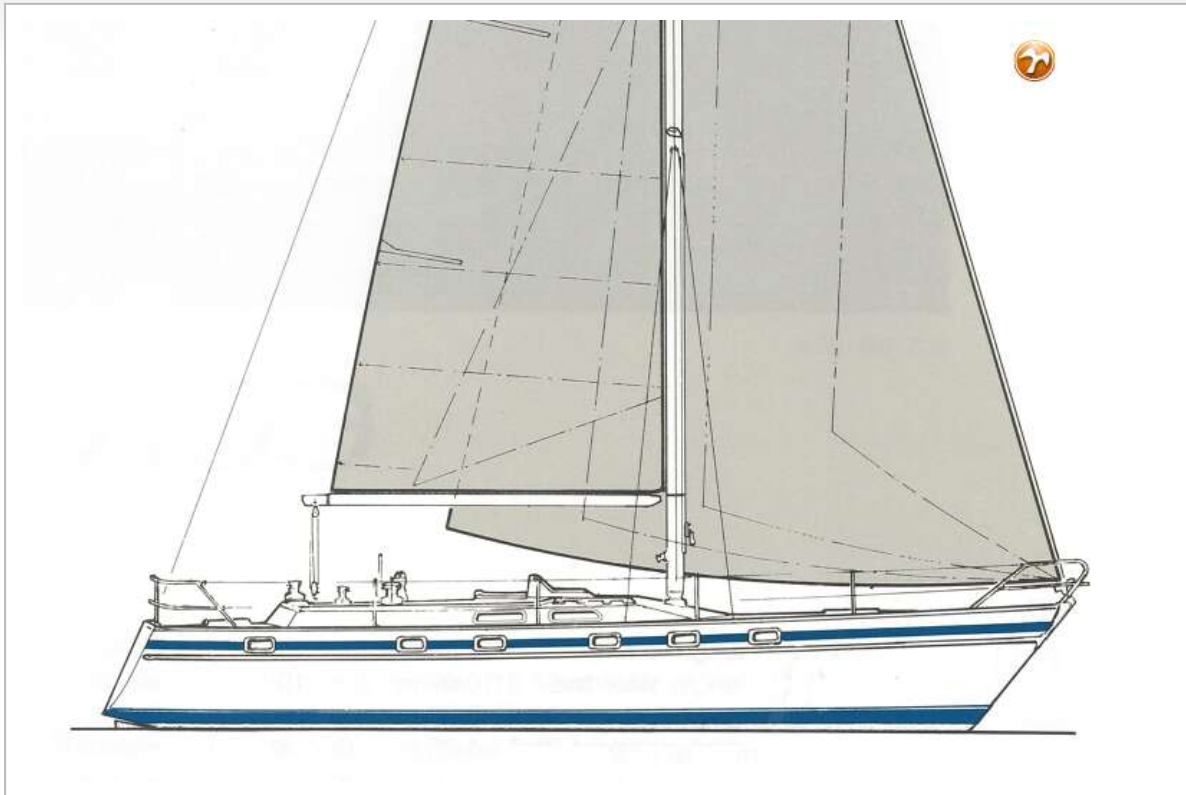
CONTEST 40S



CONTEST 40S



CONTEST 40S



CONTEST 40S



