



DE VALK  
YACHT BROKERS



## PEDRO LEVANTO 32



DE VALK  
YACHT BROKERS

## BROKER'S COMMENTS

Versatile and cleverly arranged Pedro Levanto 32. The amount of interior and storage space will surprise you. The galley and dinette in the back provide a lot of extra space and can be used as a second cabin for guests. On few other comparable motor yachts you will find such a large owner's cabin with separate shower and toilet. Easy access to engine room and space to work around the engine. With the windows and arch folded down, a vertical clearance of 2.42 meters is created. Her sole owner used her for family trips on the European inland waterways.

*Marc Weijenberg*

## SPECIFICATIONS

<b>Dimensions</b>	9.70 x 3.50 x 0.95 (m)	<b>Builder</b>	Pedro Boat BV
<b>Built</b>	2008	<b>Cabins</b>	2
<b>Material</b>	Steel	<b>Berths</b>	4
<b>Engine(s)</b>	1 x Perkins M92 diesel	<b>Hp/Kw</b>	86.00 (hp), 63.21 (kw)
<b>Asking price</b>	sold (VAT )	<b>Lying</b>	contact Sint Annaland

## CONTACT

<b>Sales office</b>	De Valk Sint Annaland B.V.	<b>Telephone</b>	+31 166 601 000
<b>Address</b>	Koelhuisweg 4 4697 RM Sint Annaland NL	<b>E-mail</b>	sintannaland@devalk.nl

## DISCLAIMER

These particulars are given in good faith as supplied but cannot be guaranteed.



## GENERAL

Model	PEDRO LEVANTO 32
Type	motor yacht
LOA (m)	9,70
LWL (m)	8,83
Beam (m)	3,50
Draft (m)	0,95
Air draft (m)	2,42
Headroom (m)	1,96
Year built	2008
Builder	Pedro Boat BV
Country	The Netherlands
Designer	Vripack / Pedro Boat
Displacement (t)	8,5
CE norm	B
Hull material	steel
Hull colour	blue
Hull thickness (mm)	4mm
Hull shape	hard chine
Superstructure material	steel
Rubbing strake	plastic
Deck material	steel
Deck finish	non-skid paint
Cockpit deck finish	non-skid paint
Window frame	aluminium Gebo
Window material	tempered glass
Deckhatch	Gebo
Portholes	Gebo
Radar arch	collapsible
Fuel tank (litre)	steel 400
Freshwater tank (litre)	stainless steel 325



<b>Blackwater tank (litre)</b>	stainless steel 280
<b>Blackwater tank extraction</b>	deck extraction + pump
<b>Wheel steering</b>	hydraulic Ultraflex
<b>More info on paintwork</b>	Awlgrip 2 comp paint
<b>Extra info</b>	Opening window in salon

## ACCOMMODATION

<b>Cabins</b>	2
<b>Berths</b>	4
<b>Interior</b>	teak
<b>Floor</b>	carpet
<b>Aft deck</b>	yes
<b>Saloon</b>	With L-shape settee
<b>Headroom saloon (m)</b>	1,96-2,00
<b>Heating</b>	diesel ducted hot air Webasto AT3500
<b>Dinette to convert into berth</b>	(bed 2,00 x 1,30m)
<b>Opening door to aft deck</b>	yes
<b>Galley</b>	yes
<b>Countertop</b>	plastic
<b>Sink</b>	stainless steel
<b>Cooker</b>	calor gas Smev 3 burner
<b>Fridge</b>	Waeco 12v (with freezer compartment)
<b>Hot water system</b>	220V + engine
<b>Water pressure system</b>	electrical
<b>Owners cabin</b>	double bed
<b>Bed length (m)</b>	2,00 x 1,50
<b>Wardrobe</b>	hanging/drawers/shelves
<b>Bathroom</b>	separate
<b>Toilet</b>	separate
<b>Toilet system</b>	manual
<b>Wash basin</b>	in the bathroom



**Shower** separate

## MACHINERY

<b>No of engines</b>	1
<b>Make</b>	Perkins
<b>Type</b>	M92
<b>HP</b>	86
<b>kW</b>	63,21
<b>Fuel</b>	diesel
<b>Year installed</b>	2008
<b>Maximum speed (kn)</b>	8
<b>Cruising speed (kn)</b>	6,5
<b>Consumption (l/hr)</b>	4
<b>Engine hours</b>	1745
<b>Engine cooling system</b>	freshwater heat exchanger
<b>Drive</b>	shaft
<b>Shaft seal</b>	yes
<b>Engine controls</b>	bowden cable
<b>Gearbox</b>	mechanical ZF Hurth
<b>Bowthruster</b>	electric Maxpower 12v/60kgf
<b>Exhaust</b>	watercooled
<b>Thrust bearing</b>	Amartech
<b>Propeller type</b>	fixed
<b>Propeller blades</b>	4
<b>Propeller shaft material</b>	stainless steel
<b>Shaft lubrication</b>	water
<b>Electric bilge pump</b>	2 x
<b>Electrical installation</b>	12/220v
<b>Start battery</b>	1 x 100ah (2014)
<b>Service battery</b>	1 x 140ah (2019)
<b>Bowthruster battery</b>	1 x 140ah (2018)



<b>Battery monitor</b>	Victron BMV-600
<b>Battery charger</b>	Victron 12v/30amp/3
<b>Shorepower</b>	with cable
<b>Extra info</b>	Victron heavy 3-stage alternator on engine
<b>Extra info</b>	Harsonic ultrasonic anti-algy hull transducer

## NAVIGATION

<b>Depth sounder/log</b>	Raymarine ST60 Tridata
<b>VHF</b>	M-Tech SX35
<b>GPS</b>	Raymarine
<b>Plotter</b>	Raymarine 7" Hybrid-touch
<b>Navigation lights</b>	yes

## EQUIPMENT

<b>Fixed windscreen</b>	(fold-down type)
<b>Sprayhood</b>	yes
<b>Cockpit cover</b>	yes
<b>Cockpit table</b>	yes
<b>Bathing platform</b>	yes
<b>Boarding ladder</b>	stainless steel
<b>Anchor</b>	Pool (stainless steel)
<b>Anchor chain</b>	Approx. 15 mtrs
<b>Windlass</b>	manual Vetus
<b>Deck wash</b>	yes
<b>Sea railing</b>	stainless steel
<b>Grab rail (superstructure)</b>	stainless steel
<b>Railing side opening gates</b>	2 x
<b>Pushpit</b>	yes
<b>Pulpit</b>	yes
<b>Wiper</b>	yes
<b>Horn</b>	yes



<b>Fenders</b>	yes
<b>Mooring lines</b>	yes
<b>Spare parts</b>	(for engine)
<b>TV</b>	+dvd player
<b>Radio-cd player</b>	JVC
<b>Speakers in salon</b>	yes
<b>Fire extinguisher</b>	(2016)
<b>Extinguisher in engine room</b>	(2008)
<b>Extra info</b>	1 x safe













# PEDRO LEVANTO 32









# PEDRO LEVANTO 32





# PEDRO LEVANTO 32

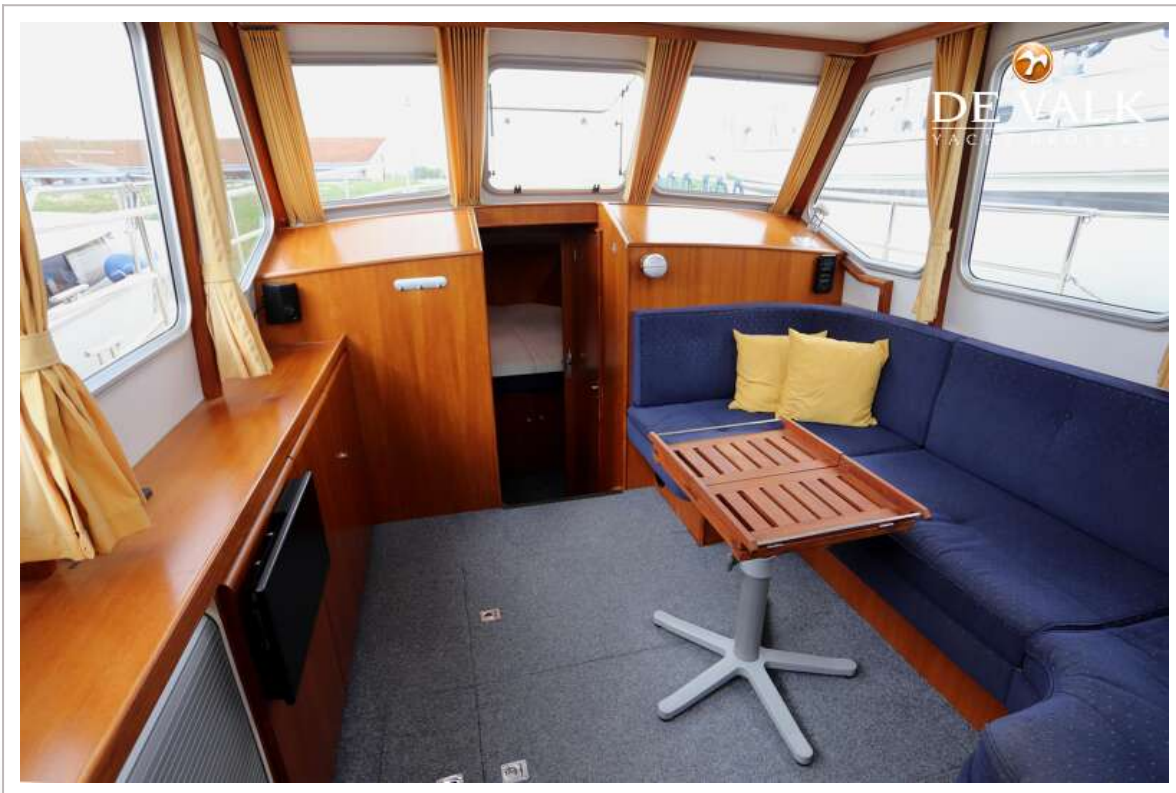


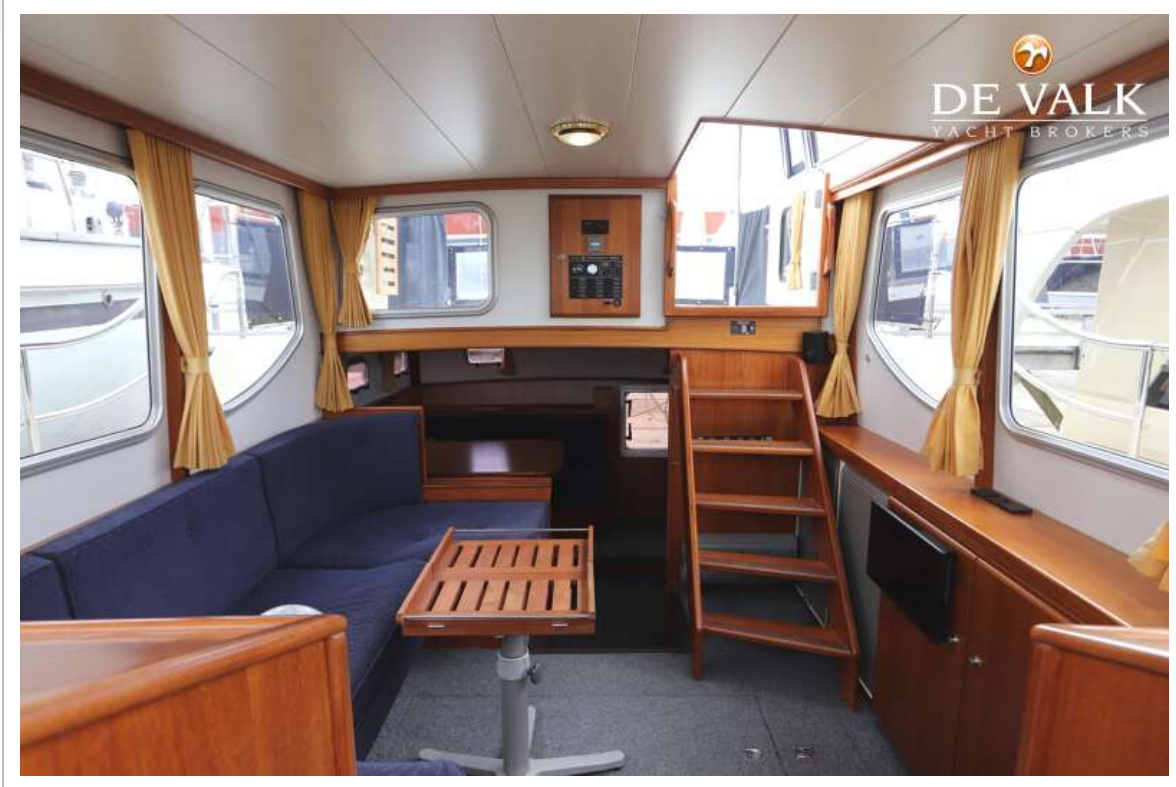
# PEDRO LEVANTO 32





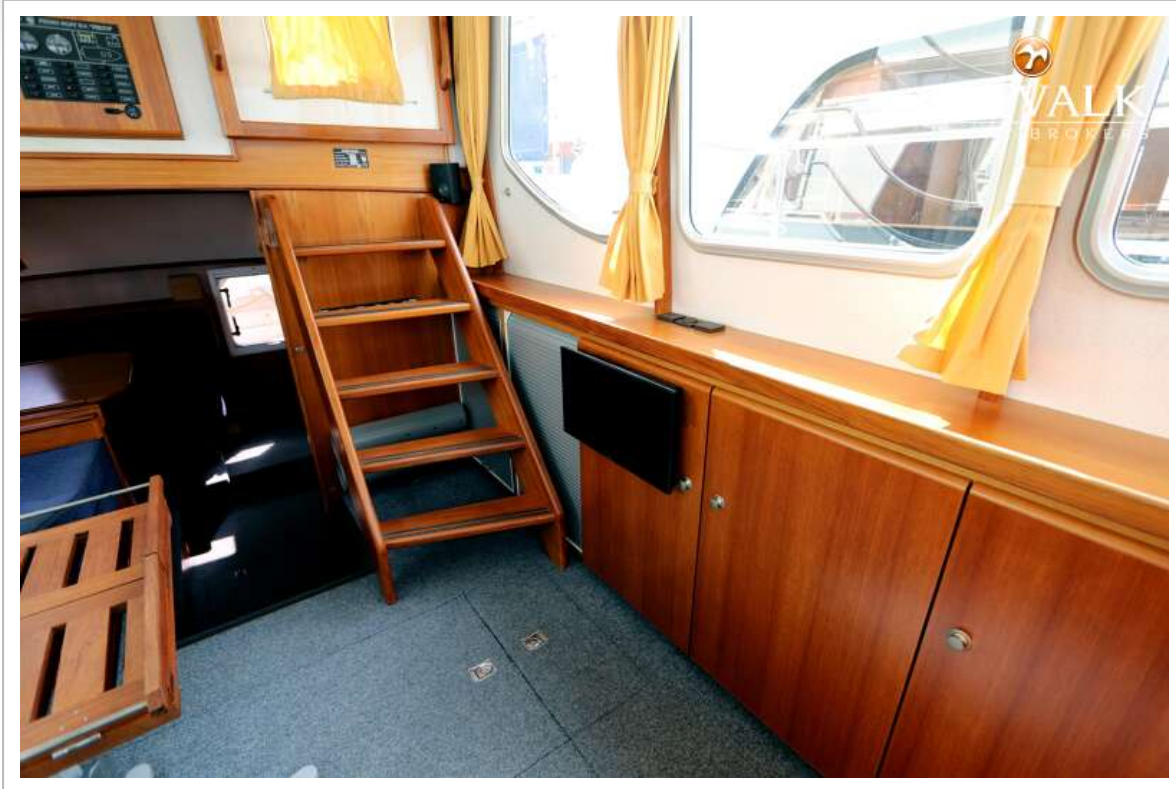
# PEDRO LEVANTO 32





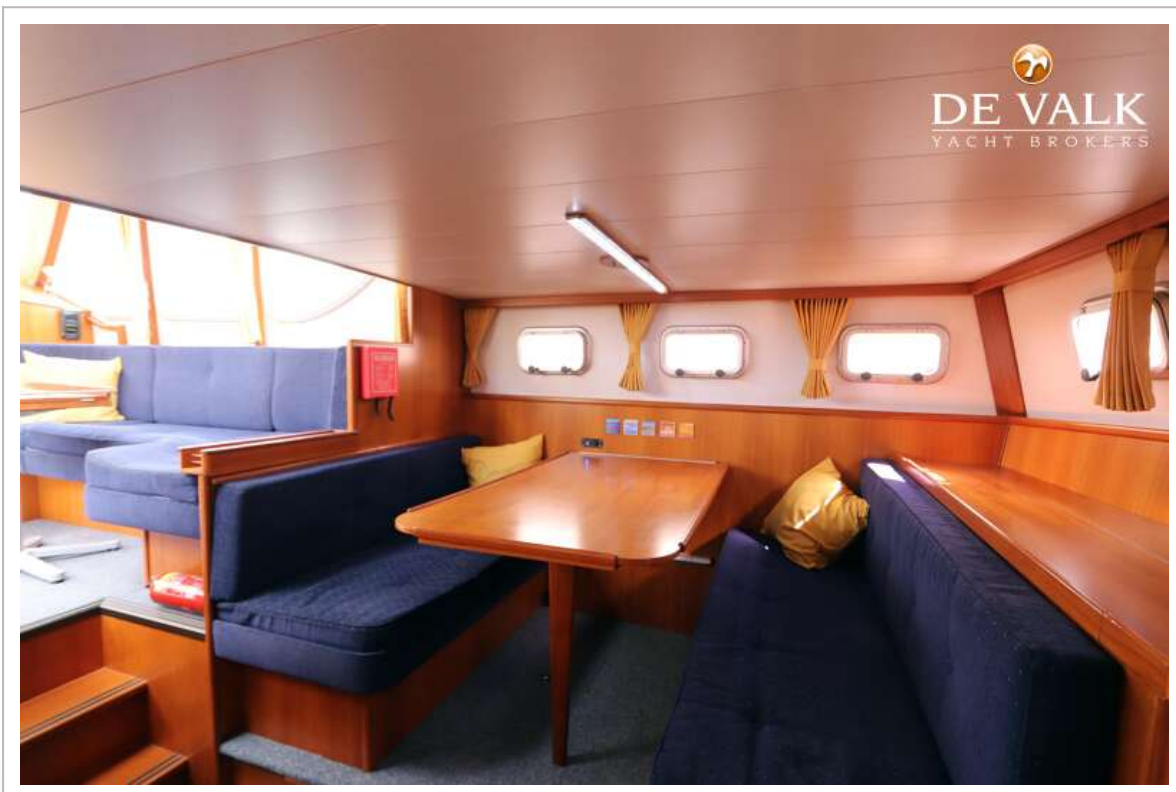
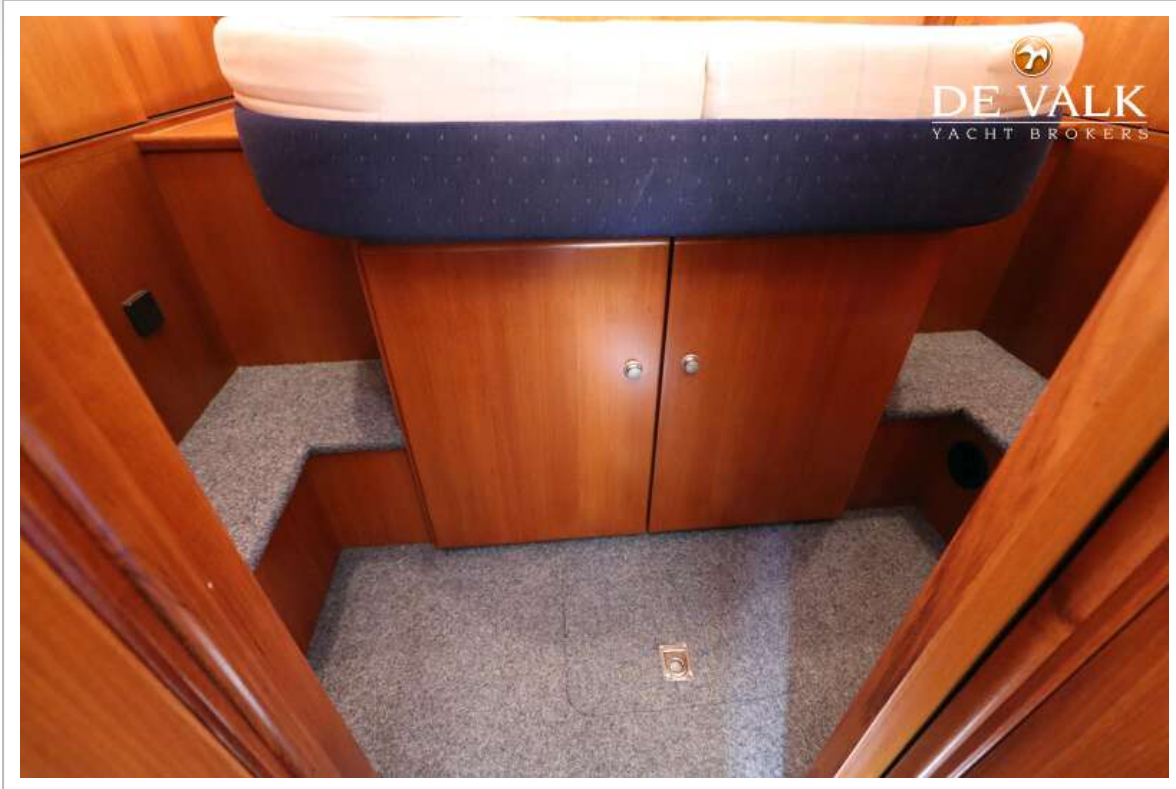


# PEDRO LEVANTO 32



# PEDRO LEVANTO 32







# PEDRO LEVANTO 32











