



BAVARIA 40 CRUISER



BAVARIA 40 CRUISER

BROKER'S COMMENTS

Distinctively designed by Bruce Farr for Bavaria, this 40 Cruiser model offers much comfort, style, accommodations and as to be expected from Bruce Farr, sail performance. She comes fully equipped with lots of goodies, updated navionics and sail inventory. We sold this yacht in 2015 to the current now 2nd owner. She has only been used for private family sailing. This is not a charter boat. Below decks you will find a contemporary interior with ample light and ventilation throughout. On decks good ergonomics with a spacious layout, twin steering wheel setup and more storage space.

Marc Weijenberg

SPECIFICATIONS

Dimensions	12.35 x 3.99 x 2.05 (m)	Builder	Bavaria Yacht GmbH
Built	2011	Cabins	3
Material	GRP	Berths	6
Engine(s)	1 x Volvo Penta D1-30 diesel	Hp/Kw	29.00 (hp), 21.32 (kw)
Asking price	sold (VAT)	Lying	at sales office

CONTACT

Sales office	De Valk Sint Annaland B.V.	Telephone	+31 (0)166 601 000
Address	Koelhuisweg 4 4697 RM Sint Annaland NL	E-mail	sintannaland@devalk.nl

DISCLAIMER

These particulars are given in good faith as supplied but cannot be guaranteed.



BAVARIA 40 CRUISER

GENERAL

Model	BAVARIA 40 CRUISER
Type	sailing yacht
LOA (m)	12,35
LWL (m)	10,75
Beam (m)	3,99
Draft (m)	2,05
Air draft (m)	18,67
Headroom (m)	1,97
Year built	2011
Builder	Bavaria Yacht GmbH
Country	Germany
Designer	Bruce Farr BMW Design Works
Displacement (t)	8,8
Ballast (tonnes)	cast iron 2,7
CE norm	A
Hull material	GRP
Hull colour	white
Hull shape	round-bilged
Keel type	fin keel
Superstructure material	GRP
Rubbing strake	aluminum
Deck material	GRP
Deck finish	non-skid moulded in
Cockpit deck finish	teak
Window frame	aluminium
Deckhatch	With blinds-moquito nets
Portholes	aluminium
Fuel tank (litre)	polyethylene 1 x 210
Freshwater tank (litre)	polyethylene 1 x 210
Blackwater tank (litre)	polyethylene 2 x 75



BAVARIA 40 CRUISER

Blackwater tank extraction	deck extraction + uw line
Wheel steering	cable steering Twin-steeringwheel
Emergency tiller	yes
Extra info	Covers for steeringwheel-pedestals and cockpit-table.

ACCOMMODATION

Cabins	3
Berths	6
Interior	oak
Floor	woodprint
Saloon	With settee
Headroom saloon (m)	1,97
Heating	diesel ducted hot air Webasto Airtop 5500
Dinette	yes
Galley	yes
Countertop	plastic
Sink	stainless steel 2 x
Cooker	calor gas Bavaria 2 burner
Oven	Bavaria
Microwave	Baumatic (220v)
Fridge	12v Waeco + Dometic with freezer (2020)
Hot water system	220V + engine
Water pressure system	electrical
Owners cabin	v-bed
Bed length (m)	2,08 x 1,80
Wardrobe	hanging and shelves
Bathroom	en suite I
Toilet	en suite
Toilet system	manual
Wash basin	in the bathroom
Shower	en suite



BAVARIA 40 CRUISER

Guest cabin 1	double bed
Bed length (m)	2,03 x 1,60
Wardrobe	hanging and shelves
Bathroom	shared II
Toilet	shared
Toilet system	manual
Wash basin	in the bathroom
Shower	shared
Guest cabin 2	double bed
Bed length (m)	2,03 x 1,60
Wardrobe	hanging and shelves
Extra info	Webasto heater service 2019 + extra heater-outlets
Extra info	Gashoses new 2019

MACHINERY

No of engines	1
Make	Volvo Penta
Type	D1-30
HP	29
kW	21,32
Fuel	diesel
Year installed	2011
Maximum speed (kn)	8
Cruising speed (kn)	6,5
Consumption (l/hr)	3,5
Engine hours	583
Engine cooling system	freshwater heat exchanger
Drive	sail-drive
Saildrive seal	New 2019
Engine controls	bowden cable
Gearbox	Volvo Penta



BAVARIA 40 CRUISER

Exhaust	watercooled
Propeller type	(2020)
Propeller blades	3
Manual bilge pump	1 x
Electric bilge pump	1 x
Electrical installation	12/220v
Start battery	1 x 65ah (2020)
Service battery	2 x 180ah (2020)
Battery monitor	Bavaria display
Battery charger	Quick 12v/45amp
Inverter	Mastervolt 12/220/300watt
Shorepower	with cable
Extra info	Enginemounts new 2017

NAVIGATION

Compass	2 x Plastimo Olympic 135
Electric compass	Via autopilot
Depth sounder	Garmin GMI-10
Log	Garmin GMI-10
Windset	Garmin GMI-10
Repeater	Garmin GMI-10
VHF	Garmin 300 + handset
VHF handheld	yes
Autopilot	Garmin GPH-12 +remote
Radar	Garmin
Plotter	Garmin 7410
Personal computer	Intel NUC tactical pc + 22" screen
PC connection	yes
Wifi antenna	Glomex weBBoat 4G
Electronis chart(s)	1 x
AIS transponder	Garmin AIS-600



BAVARIA 40 CRUISER

Navigation lights + 3 color mast-light

EQUIPMENT

Sprayhood	With stainless steel frame
Cockpit cover	yes
Cockpit table	yes
Bathing platform	Fole-open type
Boarding ladder	stainless steel
Deck shower	yes
Anchor	CQR Plough
Anchor chain	Approx. 50 mtrs
Windlass	electrical Quick 12v
Sea railing	wire
Grab rail (superstructure)	stainless steel
Railing side opening gates	2 x
Pushpit	yes
Pulpit	yes
Lifebuoy	2 x
Danbuoy	yes
Safety lines on deck	yes
Radar reflector	Tri-Lens
Fenders	yes
Mooring lines	yes
TV	Philips (connected to Fusion radio/cd)
TV receiver	DV-TB reciever
Radio-cd player	Fusion 750
Speakers in salon	Bose

RIGGING

Rigging	sloop
Standing rigging	wire



BAVARIA 40 CRUISER

Brand mast	Seldén
Material mast	aluminium
Spreaders	2 sets
Mainsail	Elvstrom (2011) furling
Stoway mast	yes
Jib	Elvstrom 35m2 (2011) furling
Jib I	Elvstrom (2018) +uvstrip
Genoa furler	Furlex 300S
Code Zero	yes
Reefing System	main in-mast furling
Backstay adjuster	mechanical
Boomvang	mechanical Selden Rodkicker
Primary sheet winch	2 x Lewmar 48ST
Secondary sheet winch	2 x Lewmar 46ST
Halyard winches	2 x Lewmar 40ST
Gennaker pole	With bowfitting, spectra halyard, sheets



BAVARIA 40 CRUISER



BAVARIA 40 CRUISER



BAVARIA 40 CRUISER



BAVARIA 40 CRUISER



BAVARIA 40 CRUISER



BAVARIA 40 CRUISER



BAVARIA 40 CRUISER



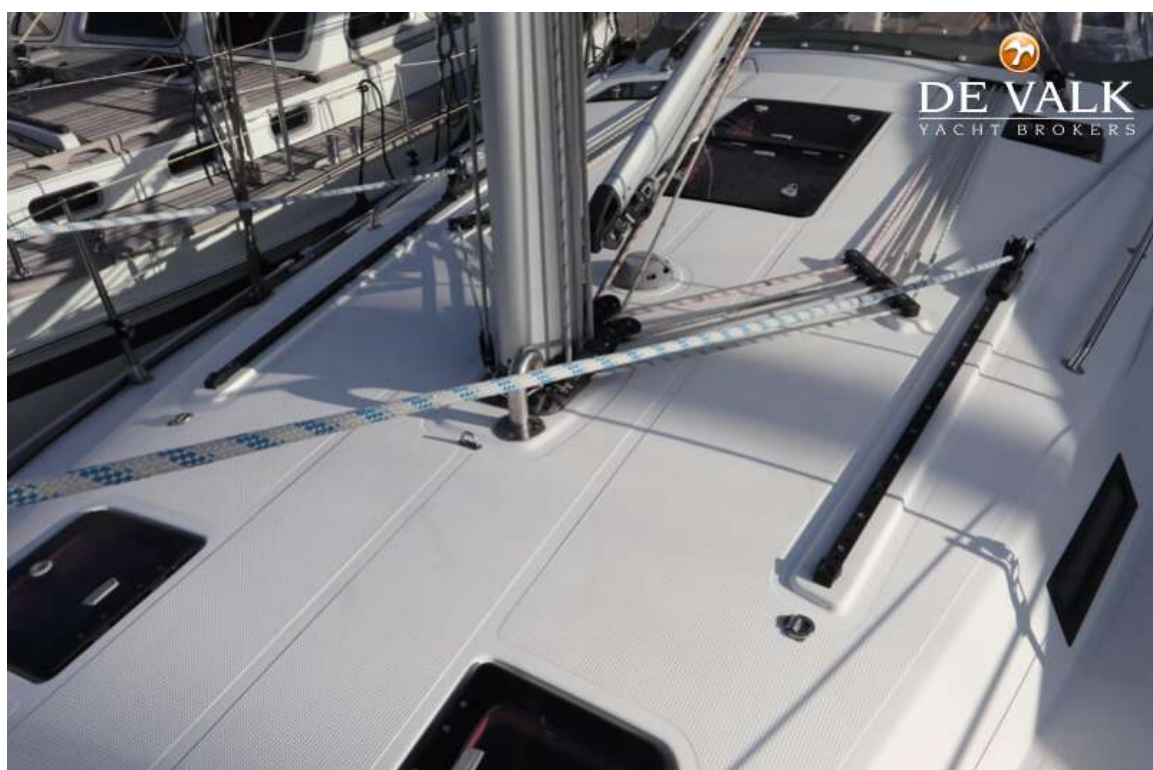
BAVARIA 40 CRUISER



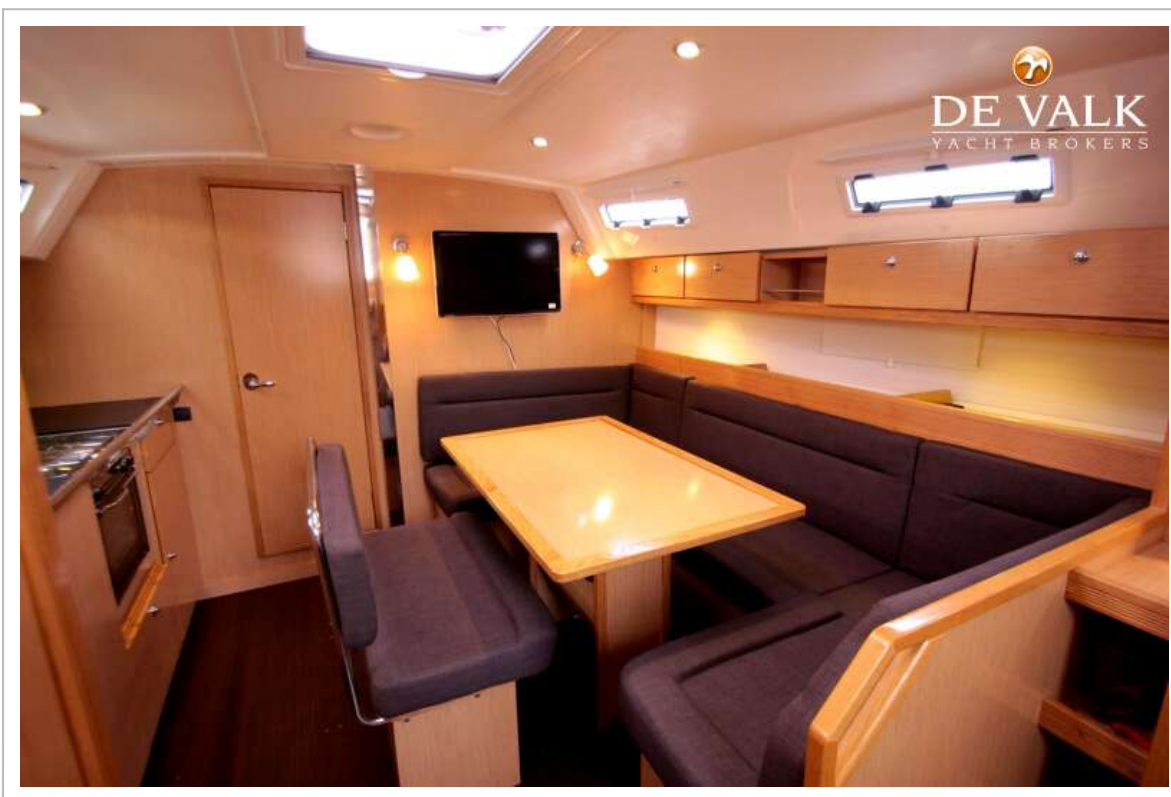
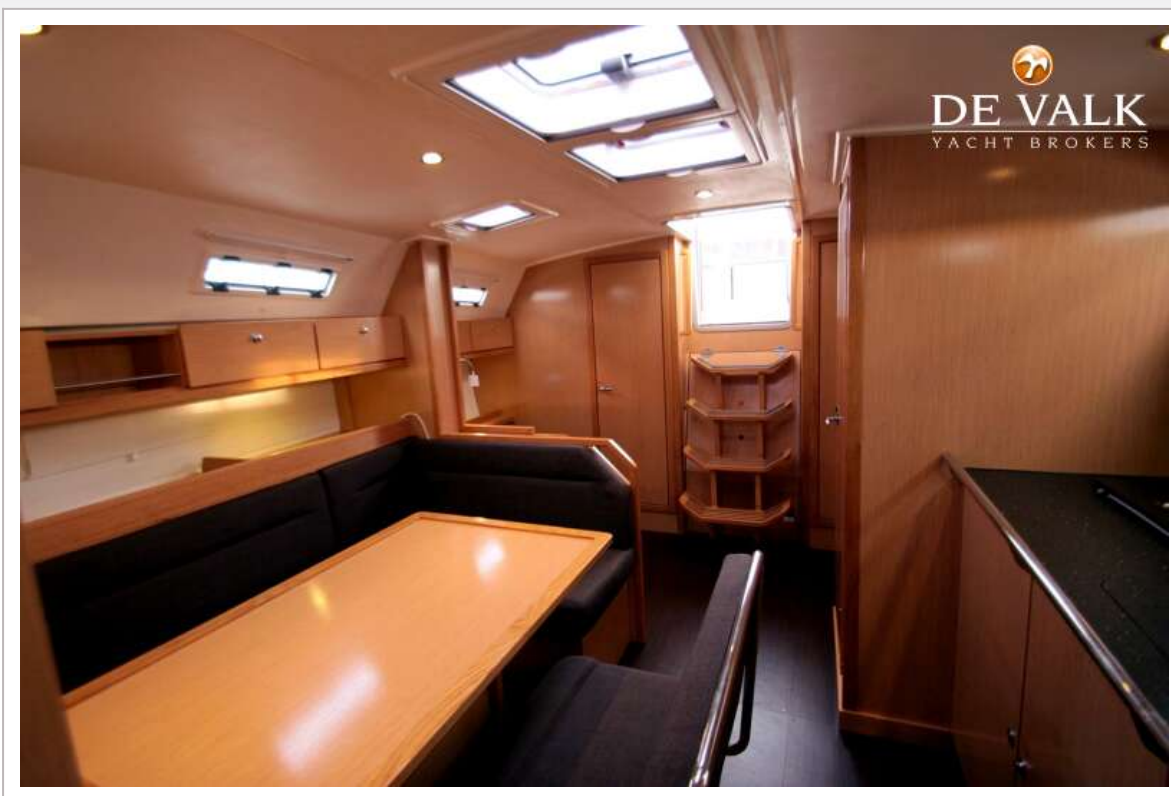
BAVARIA 40 CRUISER



BAVARIA 40 CRUISER



BAVARIA 40 CRUISER



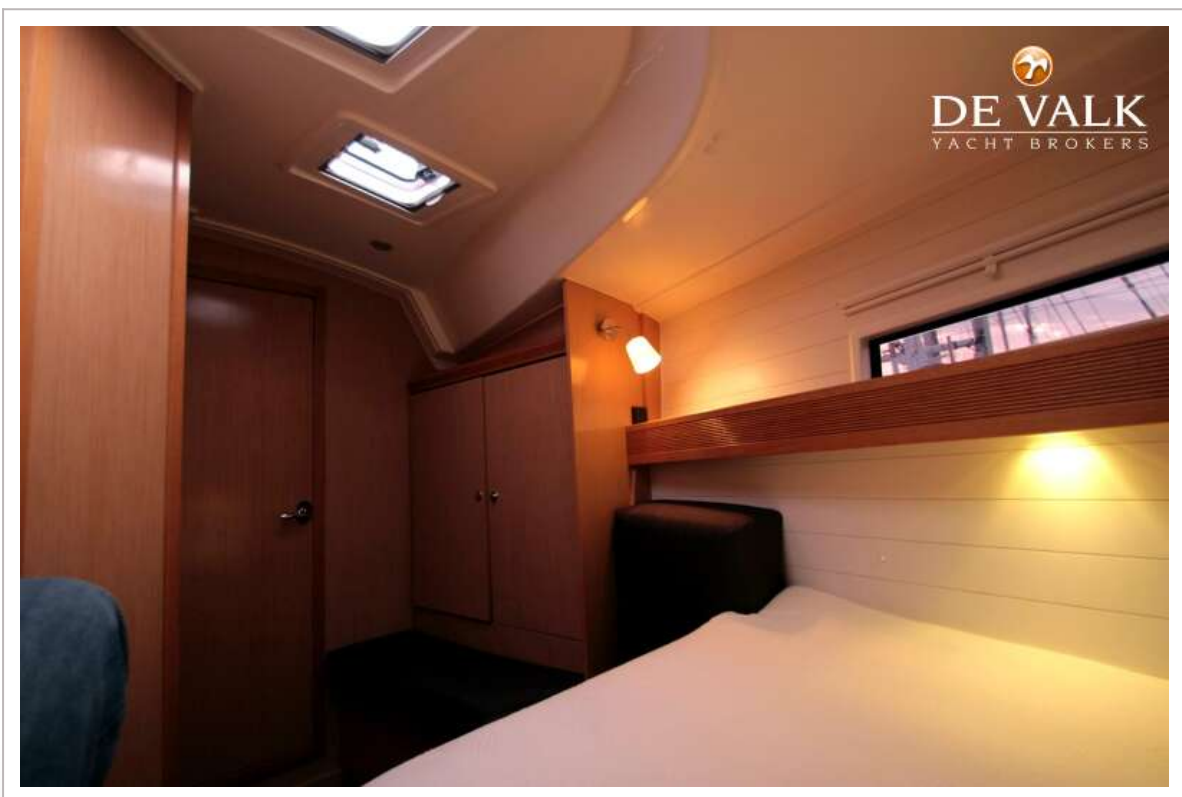
BAVARIA 40 CRUISER



BAVARIA 40 CRUISER



BAVARIA 40 CRUISER



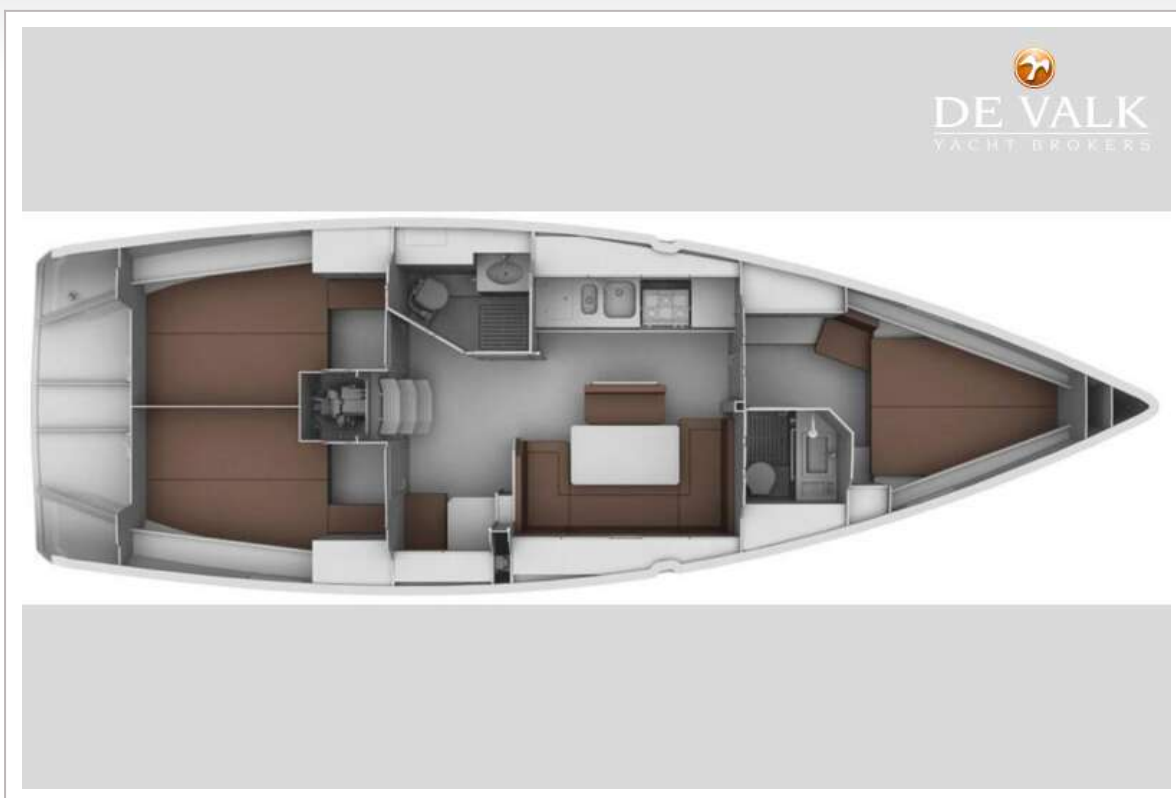
BAVARIA 40 CRUISER



BAVARIA 40 CRUISER



BAVARIA 40 CRUISER



BAVARIA 40 CRUISER

