



DE VALK
YACHT BROKERS



GRUNO 35 S COMPACT



DE VALK
YACHT BROKERS

GRUNO 35 S COMPACT

BROKER'S COMMENTS

"Sunrise" is a Gruno 35 S Compact, a traditional steel Dutch built aft cabin cruiser. Her compact size and bow and stern thrusters make her easy to handle but her interior is surprisingly spacious. She sleeps 4 and is fitted with the usual options to make life on board pleasant. The engine has very few running hours and her engine compartment is spotless. Now available for viewing in Sint Annaland.

Nick Lanting

SPECIFICATIONS

Dimensions	11.00 x 3.70 x 0.90 (m)	Builder	Jachtwerf Gruno
Built	2006	Cabins	1
Material	Steel	Berths	4
Engine(s)	1 x Vetus Deutz DT44 diesel	Hp/Kw	105.00 (hp), 77.00 (kw)
Asking price	sold (VAT)	Lying	at sales office

CONTACT

Sales office	De Valk Sint Annaland B.V.	Telephone	+31 (0)166 601 000
Address	Koelhuisweg 4 4697 RM Sint Annaland NL	E-mail	sintannaland@devalk.nl

DISCLAIMER

These particulars are given in good faith as supplied but cannot be guaranteed.



GRUNO 35 S COMPACT

GENERAL

Model	GRUNO 35 S COMPACT
Type	motor yacht
LOA (m)	11,00
Beam (m)	3,70
Draft (m)	0,90
Air draft (m)	2,70
Air draft min (m)	4,80
Headroom (m)	1,90
Year built	2006
Builder	Jachtwerf Gruno
Country	The Netherlands
Displacement (t)	9,5
CE norm	C
Hull material	steel
Hull colour	white
Hull thickness (mm)	4
Hull shape	hard chine
Superstructure material	steel
Superstructure (mm)	4
Rubbing strake	stainless steel
Deck material	steel
Deck finish	cork
Superstructure deck finish	paint
Cockpit deck finish	cork
Antifouling (year)	2020
Window frame	aluminium
Window material	tempered glass
Deckhatch	1 x
Portholes	aluminium
Radar arch	collapsible



GRUNO 35 S COMPACT

Mast can be lowered	manual
Fuel tank (litre)	steel 500
Level indicator (fuel tank)	yes
Freshwater tank (litre)	stainless steel 500
Level indicator (freshwater)	yes
Blackwater tank (litre)	stainless steel 280
Level indicator (blackwater)	yes
Blackwater tank extraction	deck extraction + pump
Outside helm position	hydraulic
Emergency tiller	yes
Extra info	Air draft windows + mast down 2,70 m.
Extra info	Air draft windows up + mast down 4,20 m.
Extra info	Air draft windows + mast up 4,80 m.

ACCOMMODATION

Cabins	1
Berths	4
Interior	cherry
Floor	carpet
Aft deck	yes
Saloon	Saloon settee converts into double bed 2,10 x 1,20m
Headroom saloon (m)	1,90
Heating	Webasto Air Top 5000
Aft Cabin	yes
Dinette	yes
Dinette to convert into berth	No
Convertible berth	Saloon settee converts into double bed 2,10 x 1,20m
Opening door to aft deck	yes
Galley	yes
Countertop	plastic
Sink	stainless steel 1 x



GRUNO 35 S COMPACT

Cooker	calor gas 4-burner, Truma remote gas lock
Extractor	Ceiling fan
Microwave	Sharp
Fridge	With freezer compartment
Hot water system	220V + engine Isotherm calorifier
Crockery	yes
Owners cabin	French bed Aft
Bed length (m)	2,00 x 1,40
Wardrobe	hanging and shelves
Bathroom	en suite
Toilet	en suite
Toilet system	electric
Wash basin	in the bathroom
Shower	en suite

MACHINERY

No of engines	1
Make	Vetus Deutz
Type	DT44
HP	105
kW	77,00
Fuel	diesel
Year installed	2006
Maximum speed (kn)	8
Cruising speed (kn)	6,5
Consumption (l/hr)	6,5
Engine hours	440
Engine cooling system	freshwater heat exchanger
Drive	shaft
Engine controls	bowden cable Vetus
Gearbox	hydraulic



GRUNO 35 S COMPACT

Bowthruster	Vetus
Sternthruster	Vetus
Exhaust	watercooled
Thrust bearing	yes
Propeller type	fixed 03/2020 renewed
Propeller blades	4
Propeller shaft material	stainless steel
Shaft lubrication	water
Electric bilge pump	yes
Electrical installation	12 V & 220 V
Batteries	yes
Start battery	1 x
Service battery	2 x 225 Ah
Bowthruster battery	yes
Sternthruster battery	yes
Battery monitor	Victron BMV6025
Battery charger/inverter	Vicron Combi MultiPlus C12/1600/71-16 + Digital Multi Control
Solar panel	2 x
Shorepower	with cable

NAVIGATION

Electric compass	Raymarine Compass
Depth sounder	yes
Depth sounder/log	Raymarine BiData
Log	Raymarine Speed (speed sensor not working, display is working)
Windset	yes
VHF	Navman VHF7100
Rudder angle indicator	VDO
Navigation lights	yes
Searchlight	yes



EQUIPMENT

Fixed windscreen	Foldable
Cockpit cover	2018, blue
Winter cover	Only for windscreen & helm
Window cover	yes
Bathing platform	yes
Boarding ladder	stainless steel
Anchor	
Anchor chain	Stainless steel
Windlass	electrical Vetus
Capstan	On anchor winch
Deck wash	At helm
Davits	No, but mounting plates are fitted
Sea railing	stainless steel
Grab rail (superstructure)	stainless steel
Railing side opening gates	Port & starboard
Pulpit	yes
Lifebuoy	yes
Wiper	3 x pantograph
Horn	electric
Fenders	yes
Mooring lines	yes
TV	Sony Bravia 46 cm in aft cabin
TV receiver	Comag
Satellite	yes
Radio-cd player	Pioneer
DVD player	yes
Speakers in salon	2 x Pioneer
Fire extinguisher	At galley
Latest extinguisher survey	08/2012
Extinguisher in engine room	Ajax FM200



GRUNO 35 S COMPACT

Auto extinguisher system

yes

Extra info

12 V & 220 V socket at helm



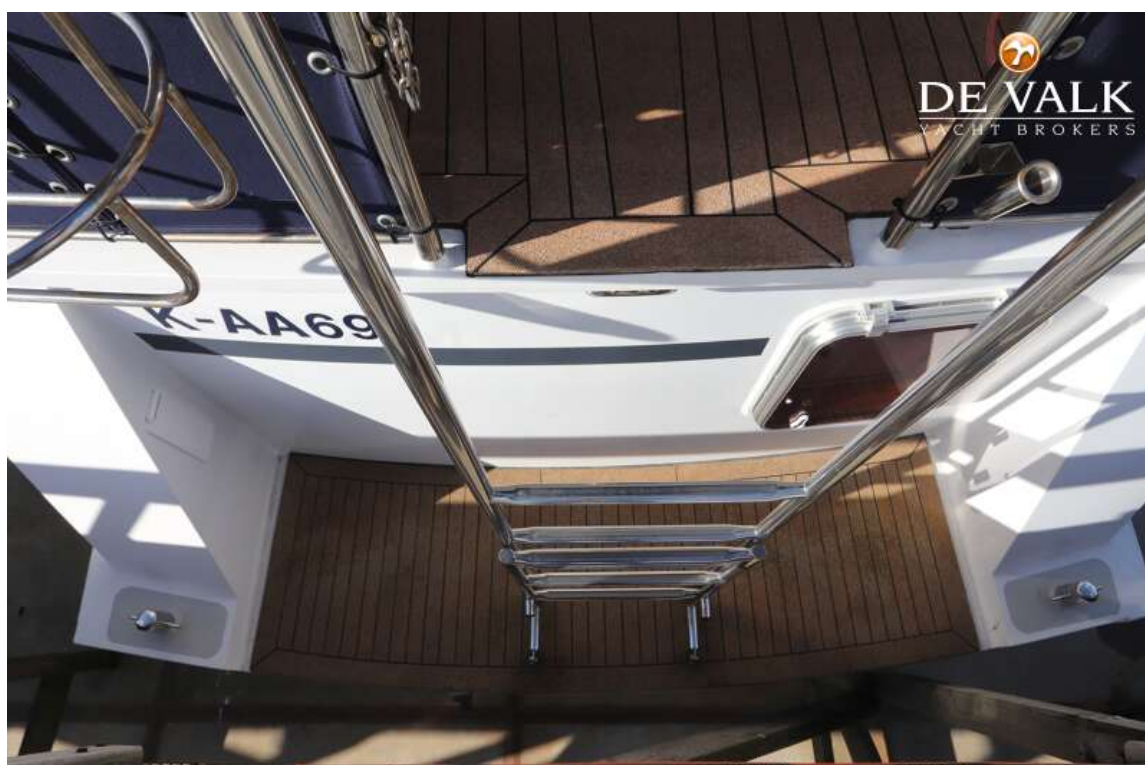
GRUNO 35 S COMPACT



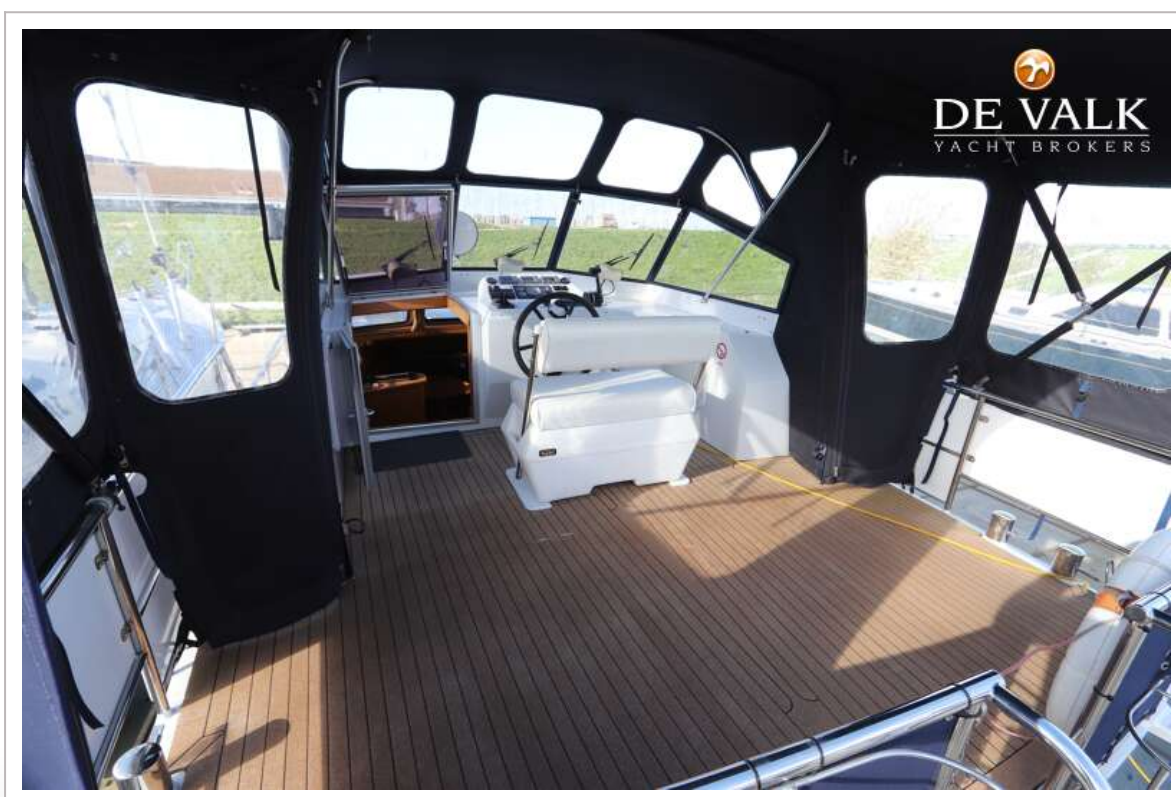
GRUNO 35 S COMPACT



GRUNO 35 S COMPACT



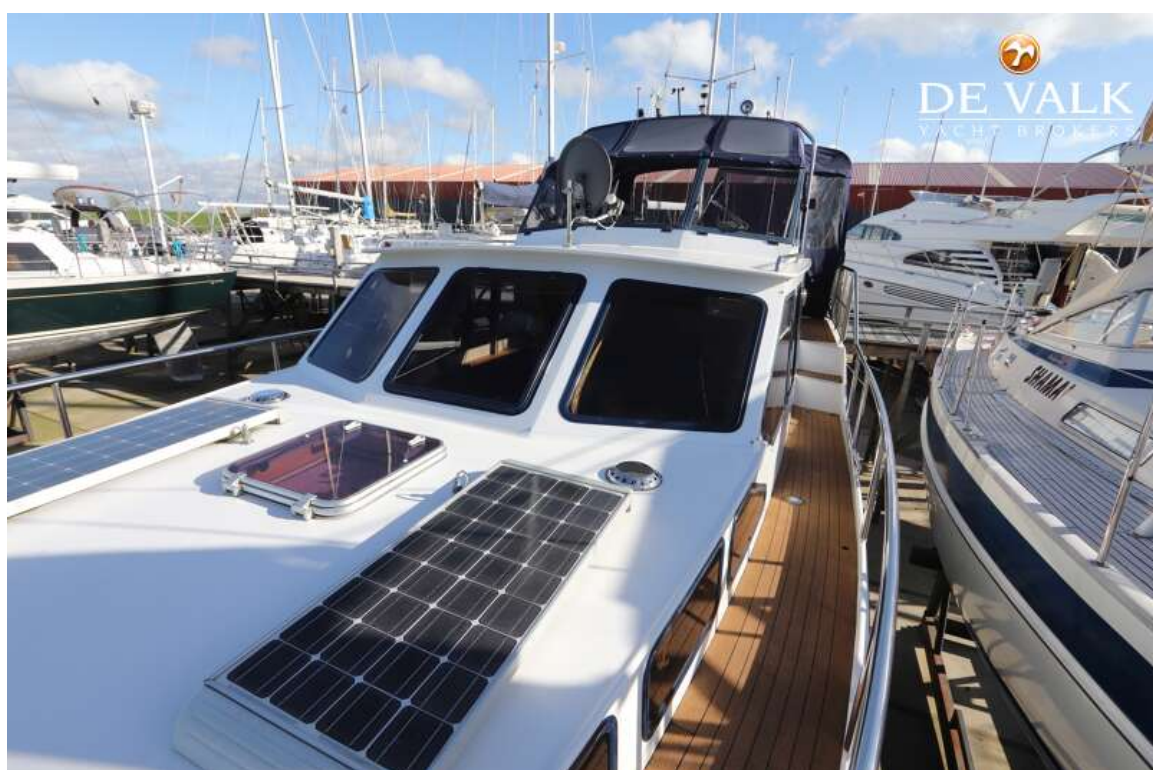
GRUNO 35 S COMPACT



GRUNO 35 S COMPACT



GRUNO 35 S COMPACT



GRUNO 35 S COMPACT



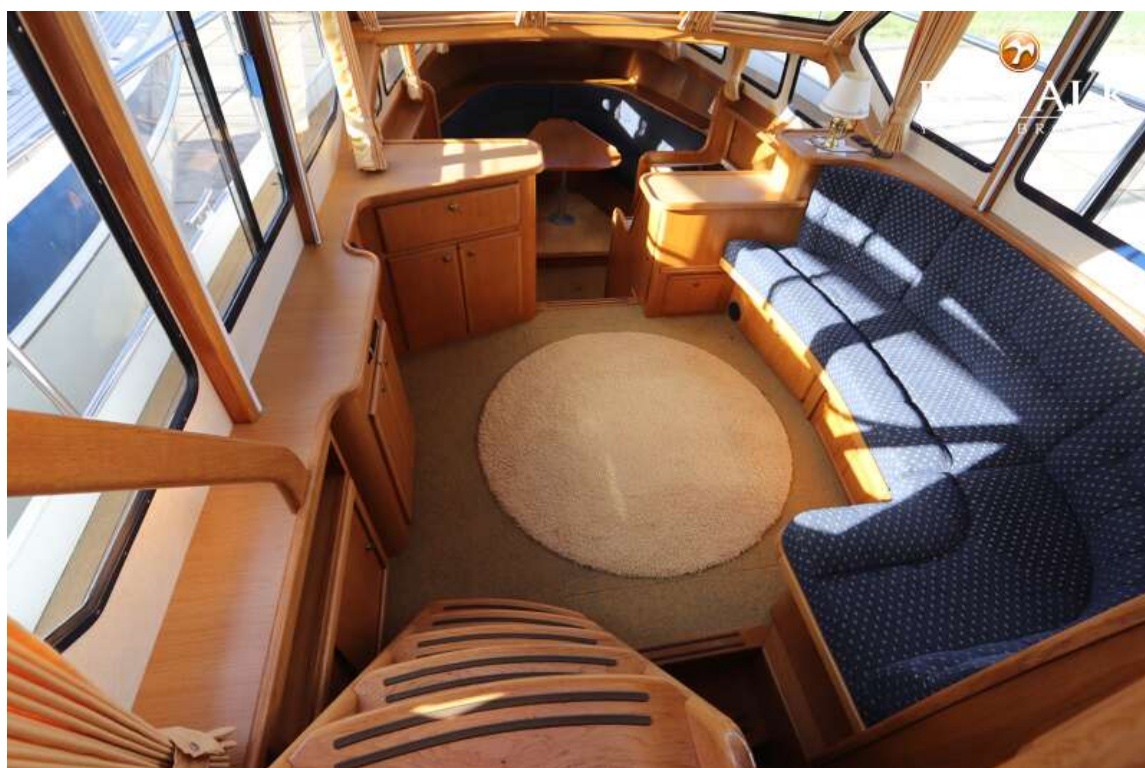
GRUNO 35 S COMPACT



GRUNO 35 S COMPACT



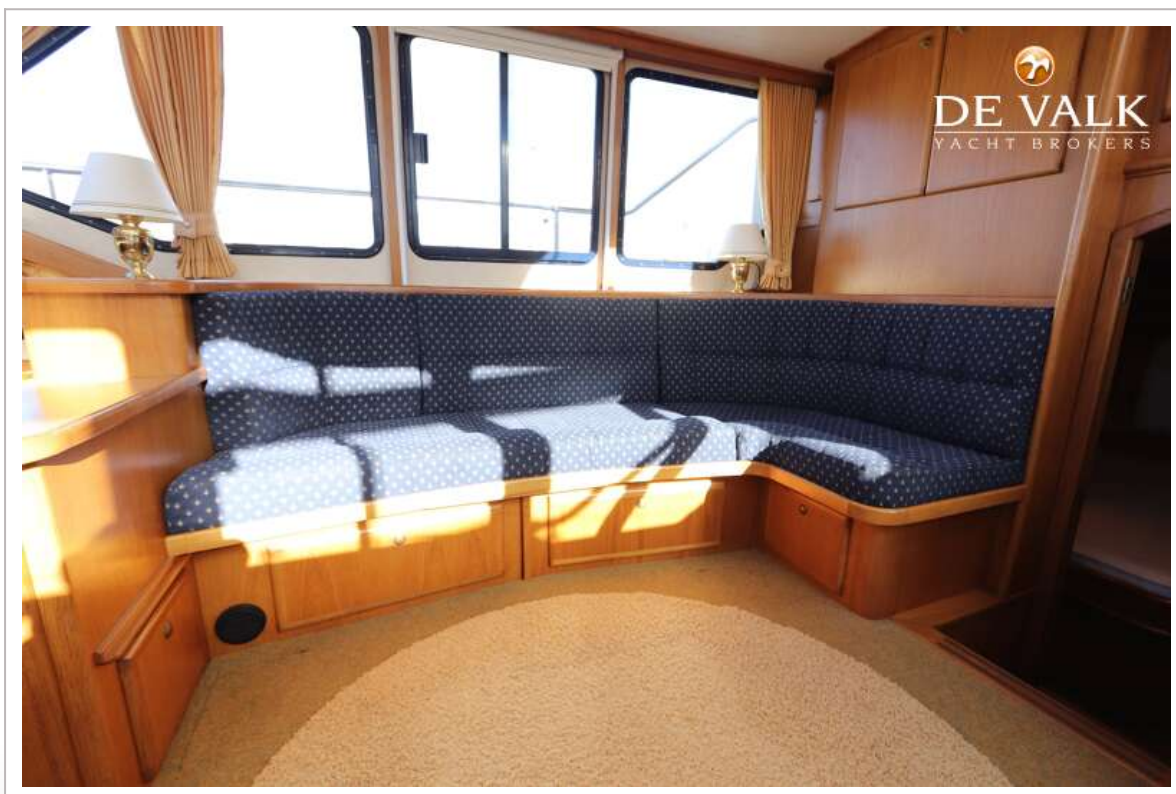
GRUNO 35 S COMPACT



GRUNO 35 S COMPACT



GRUNO 35 S COMPACT



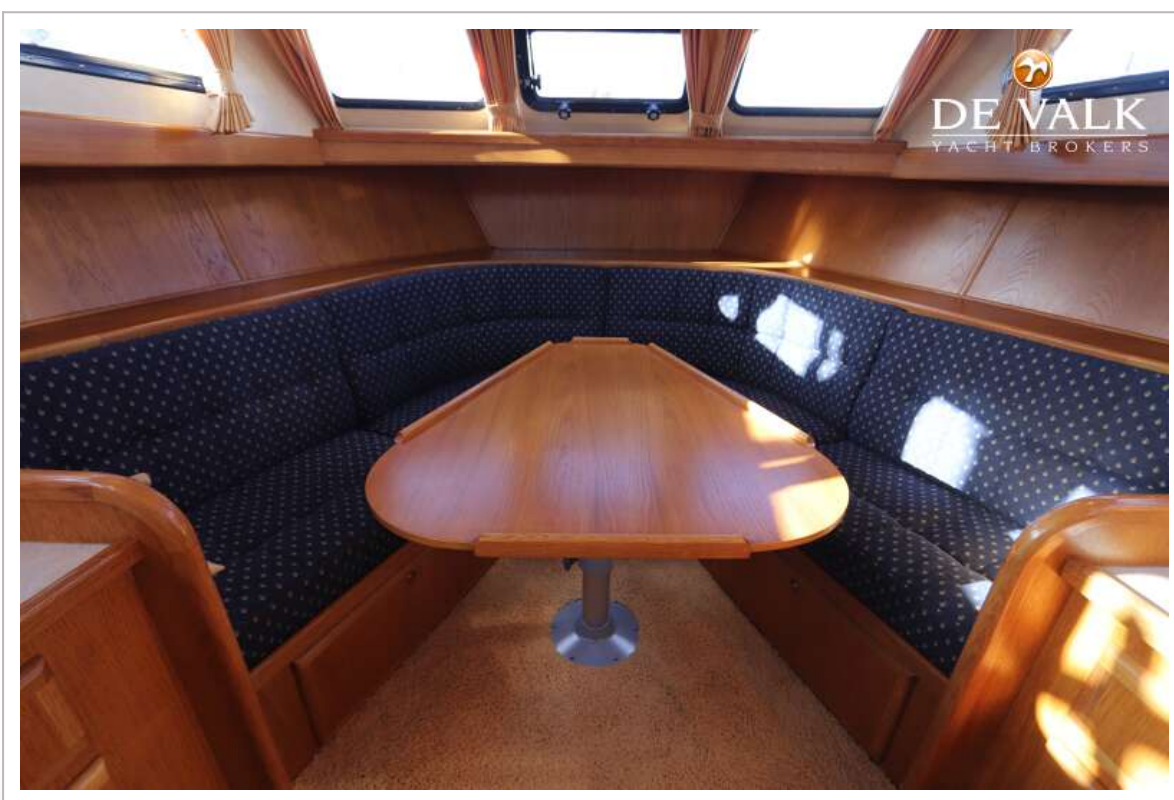
GRUNO 35 S COMPACT



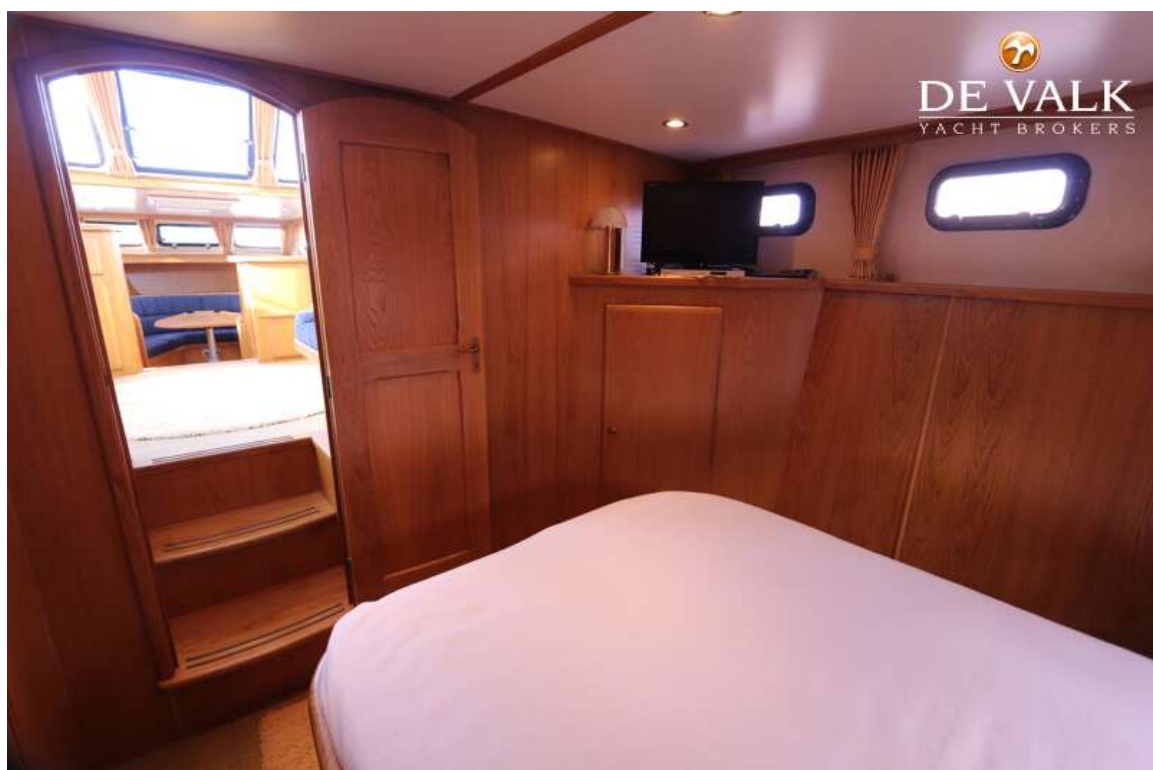
GRUNO 35 S COMPACT



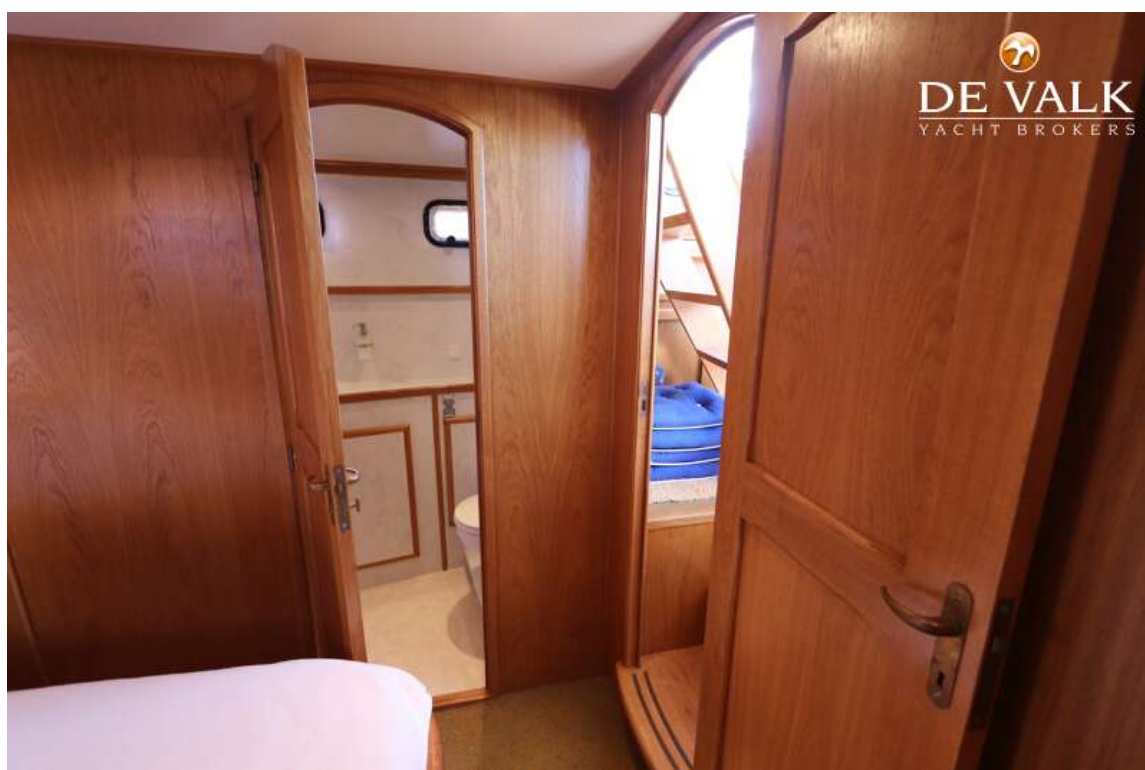
GRUNO 35 S COMPACT



GRUNO 35 S COMPACT



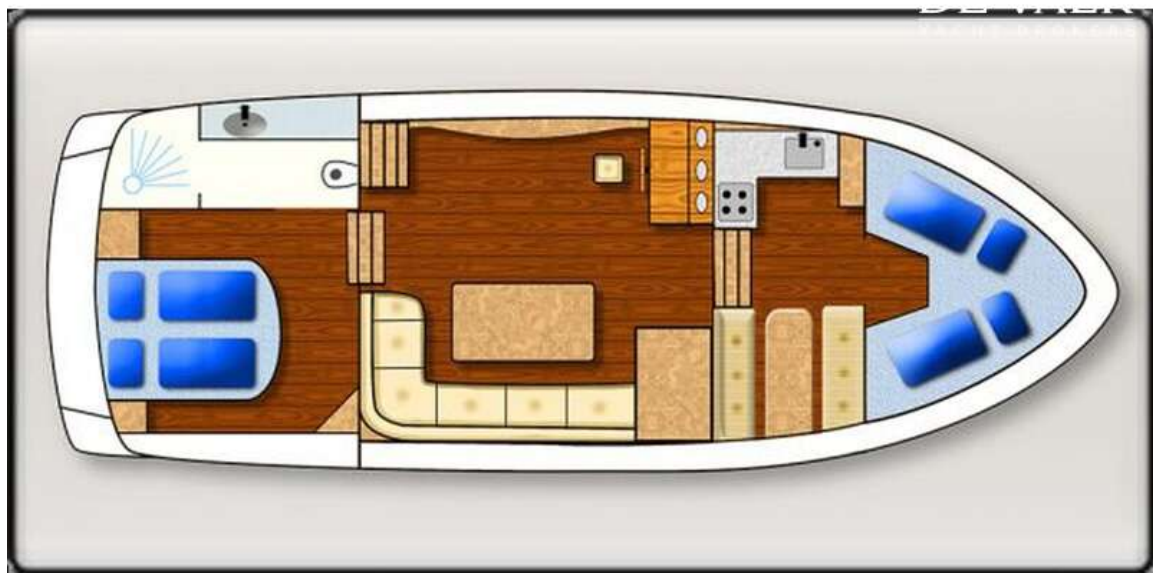
GRUNO 35 S COMPACT



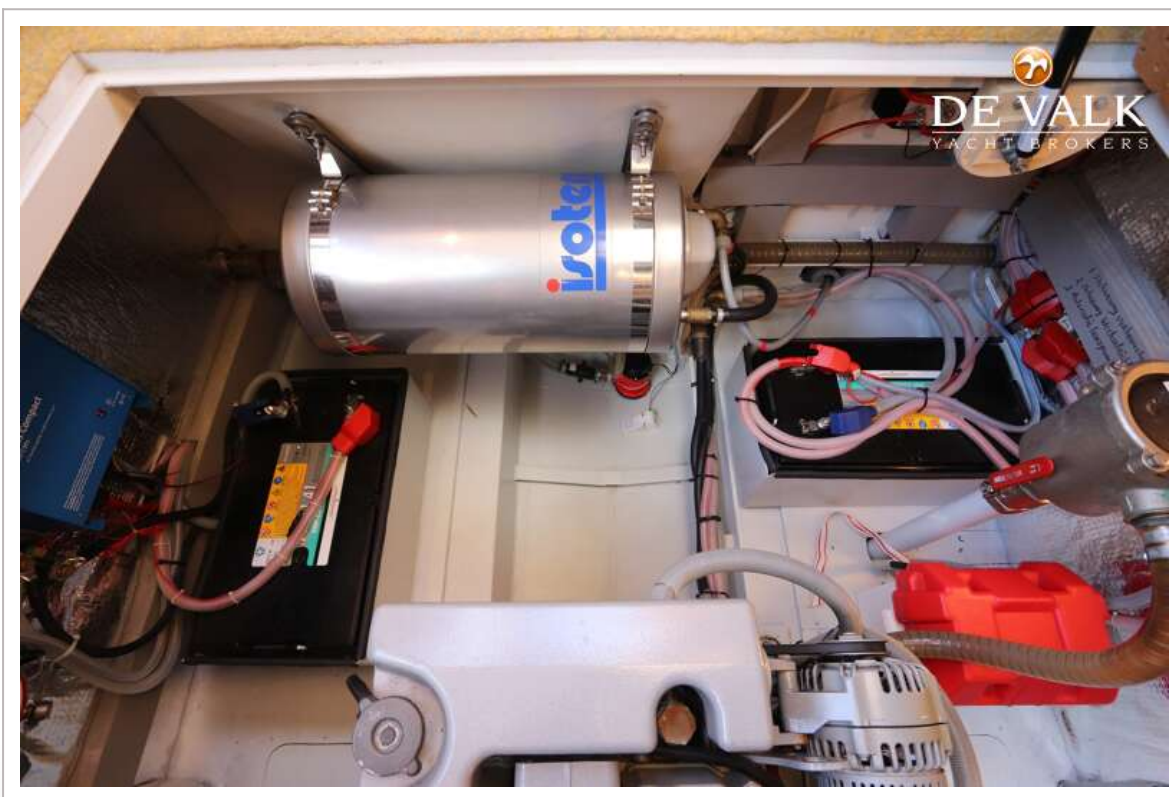
GRUNO 35 S COMPACT



GRUNO 35 S COMPACT



GRUNO 35 S COMPACT



GRUNO 35 S COMPACT



GRUNO 35 S COMPACT

