



DE VALK
YACHT BROKERS



HALLBERG RASSY 42 E



DE VALK
YACHT BROKERS

HALLBERG RASSY 42 E

BROKER'S COMMENTS

Very popular HR 42E in stunning and superb state, looking smart and even better in real. The engine has been replaced in 2003 by a 5 cylinder VW, what an immense silence! Between 2014 and 2017 so many renewals and improvements done, count with us: AWL grip hull, clean-and-go Copper coat antifouling, Sikaflex teak deck, engine shaft, propeller, rope cutter, batteries, charger/inverter, bow thruster, full electronic package, Webasto heating, rigging. All replaced during the last years. For sure this yacht is very well taken care of and in a totally ready to go condition!

Henk Sijbranda

SPECIFICATIONS

Dimensions	12.98 x 3.84 x 1.85 (m)	Builder	Hallberg Rassy Varvs AB
Built	1989	Cabins	2
Material	GRP	Berths	9
Engine(s)	1 x Volkswagen SDI 55-5 diesel	Hp/Kw	55.00 (hp), 40.42 (kw)
Asking price	sold (VAT)	Lying	at sales office

CONTACT

Sales office	De Valk Hindeloopen B.V.	Telephone	+31 514 52 40 00
Address	Oosterstrand 1 8713 JS Hindeloopen NL	E-mail	hindeloopen@devalk.nl

DISCLAIMER

These particulars are given in good faith as supplied but cannot be guaranteed.



HALLBERG RASSY 42 E

GENERAL

Model	HALLBERG RASSY 42 E
Type	sailing yacht
LOA (m)	12,98
LWL (m)	10,49
Beam (m)	3,84
Draft (m)	1,85
Headroom (m)	2,00
Year built	1989
Builder	Hallberg Rassy Varvs AB
Country	Sweden
Designer	C. Rassy / O. Enderlein
Displacement (t)	13
CE norm	NA
Hull material	GRP
Hull colour	off-white
Hull shape	round-bilged
Keel type	fin keel
Deck material	
Deck finish	teak 2015 refit/ new rubbering
Cockpit deck finish	teak
Antifouling (year)	March 2019
Dorades	2
Window frame	aluminium
Window material	glass
Fuel tank (litre)	stainless steel 300
Fuel tank 2 (litre)	stainless steel 150
Level indicator (fuel tank)	yes
Freshwater tank (litre)	GRP Total 670 new water tubes
Level indicator (freshwater)	yes
Greywater tank (litre)	New 2014



Wheel steering	cable steering
Emergency tiller	yes
More info on hull	AWL grip 2014
Extra info	New anodes March 2019

ACCOMMODATION

Cabins	2
Berths	9
Interior	teak
Floor	teak and holly
Saloon	2
Heating	Webasto 2015 Service 2020
Chart table	yes
Aft Cabin	yes
Dinette	yes
Galley	yes
Countertop	wood Print
Sink	stainless steel
Cooker	Domatic 3 burner electronic ignition, 2015
Oven	yes
Microwave	yes
Fridge	yes
Hot water system	220V + engine Boiler 40 ltr
Water pressure system	electrical
Manual and/or foot pump	Salt and fresh water combined
Owners cabin	double bed + single bed
Bed length (m)	2
Bathroom	en suite
Toilet	en suite
Toilet system	manual
Wash basin	in the bathroom



HALLBERG RASSY 42 E

Shower	en suite
Guest cabin 1	twin single
Bed length (m)	2
Wardrobe	hanging and shelves
Bathroom	separate
Toilet	separate
Toilet system	manual
Wash basin	in the bathroom
Shower	separate
Extra info	Perfect original fully refurbished cushions

MACHINERY

No of engines	1
Make	Volkswagen
Type	SDI 55-5
HP	55
kW	40,42
Fuel	diesel
Year installed	2003
Maximum speed (kn)	8,5
Cruising speed (kn)	7
Consumption (l/hr)	3,5
Engine hours	3000
Engine cooling system	freshwater heat exchanger
Drive	shaft
Shaft seal	Shaft and seal renewed 2014
Engine controls	bowden cable
Bowthruster	electric New built in Maxpower 2016
Exhaust	watercooled
Propeller type	Fixed new 2016
Propeller blades	3



HALLBERG RASSY 42 E

Propeller shaft material	stainless steel New shaft 2014
Manual bilge pump	yes
Electric bilge pump	yes
Electrical installation	12
Generator	Coupled to engine 2,7 Kw
Batteries	5 x 105 Ah 2016
Start battery	2020
Bowthruster battery	2 x Gel
Battery charger/inverter	New 2014 Victron 12/1600/70
Solar panel	2 x 85 Watt
Shorepower	with cable
Extra info	Rope cutter new 2015
Extra info	Update VW motor 20202

NAVIGATION

Compass	yes
Depth sounder/log	Raymarine I-70 New 2014
Windset	Raymarine I-70 New 2014
VHF	Simrad RS 35 AIS/ DSC + wireless remote (2014)
Autopilot	Raymarine Smartpilot, 2014
Rudder angle indicator	On pilot
Radar	Raymarine 45 cm radome 2020
Radar/GPS/plotter	C 120 New 2014
Navtex	ICS Nav4
AIS transponder	Raymarine, 2016
Navigation lights	All new LED Hella
Extra info	Whole navigation has been renewed in 2014, incl. Seataalk cables

EQUIPMENT

Fixed windscreen	yes
Sprayhood	2020



HALLBERG RASSY 42 E

Cockpit cover	Tent with windows
Bimini	2018
Cockpit cushions	yes
Cockpit table	yes
Boarding ladder	aluminum
Bow ladder	yes
Gangway	yes
Deck shower	yes
Anchor	Delta 45 kg !
Anchor chain	80 mtr
Windlass	electrical
Dinghy	2014
Outboard	Yamaha Malta
Outboard support	yes
Sea railing	wire 2018
Life raft	Last service 2016
Rope cutter	yes
Fenders	yes
Mooring lines	yes
Spare parts	yes
Radio-cd player	yes
Speakers in salon	yes

RIGGING

Rigging	sloop
Standing rigging	wire 2013 replaced
Brand mast	Seldén
Material mast	aluminium With steps in mast
Spreaders	yes
Mainsail	35 m2
Stoway mast	yes



HALLBERG RASSY 42 E

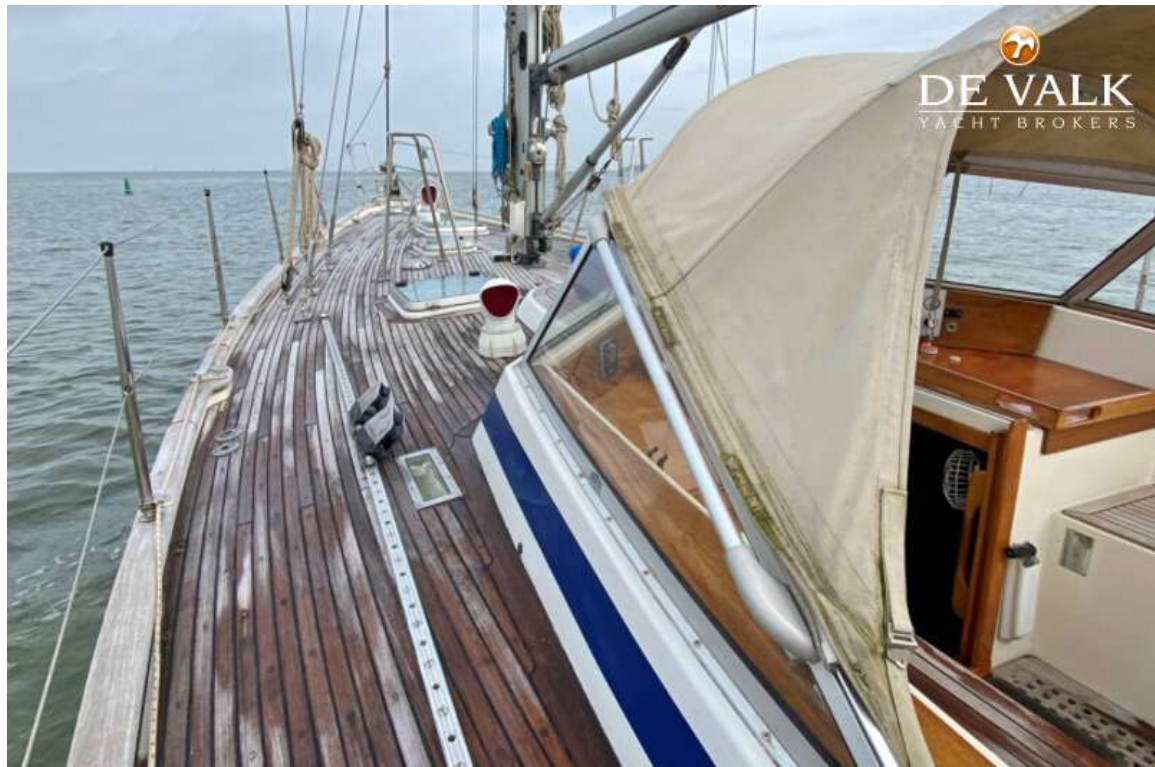
Cutterstay	yes
Genoa I	40,5 m2
Genoa II	yes
Genoa sheetwinches	Lewmar 56
Halyard winches	Lewmar 40
Extra info	Sails fully checked 2017, good state
Extra info	New rope cutter 2016



HALLBERG RASSY 42 E



HALLBERG RASSY 42 E



HALLBERG RASSY 42 E



HALLBERG RASSY 42 E



HALLBERG RASSY 42 E



HALLBERG RASSY 42 E



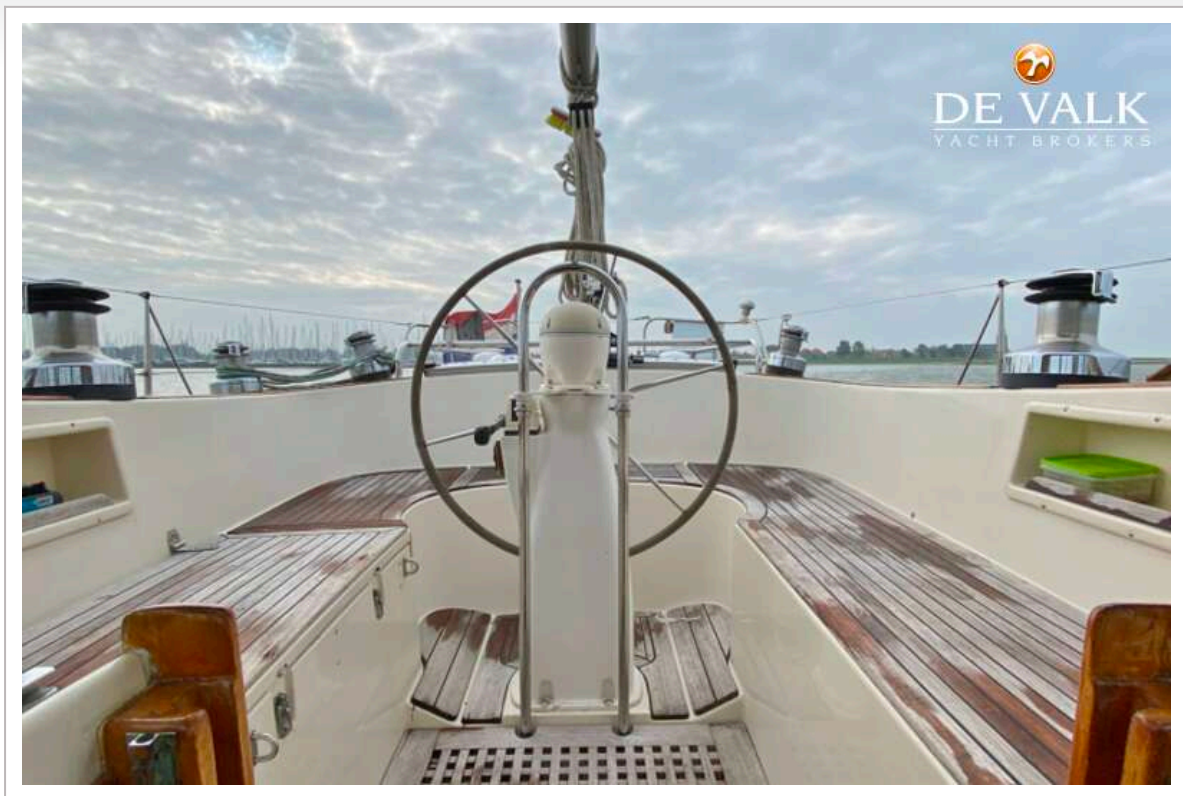
HALLBERG RASSY 42 E



HALLBERG RASSY 42 E



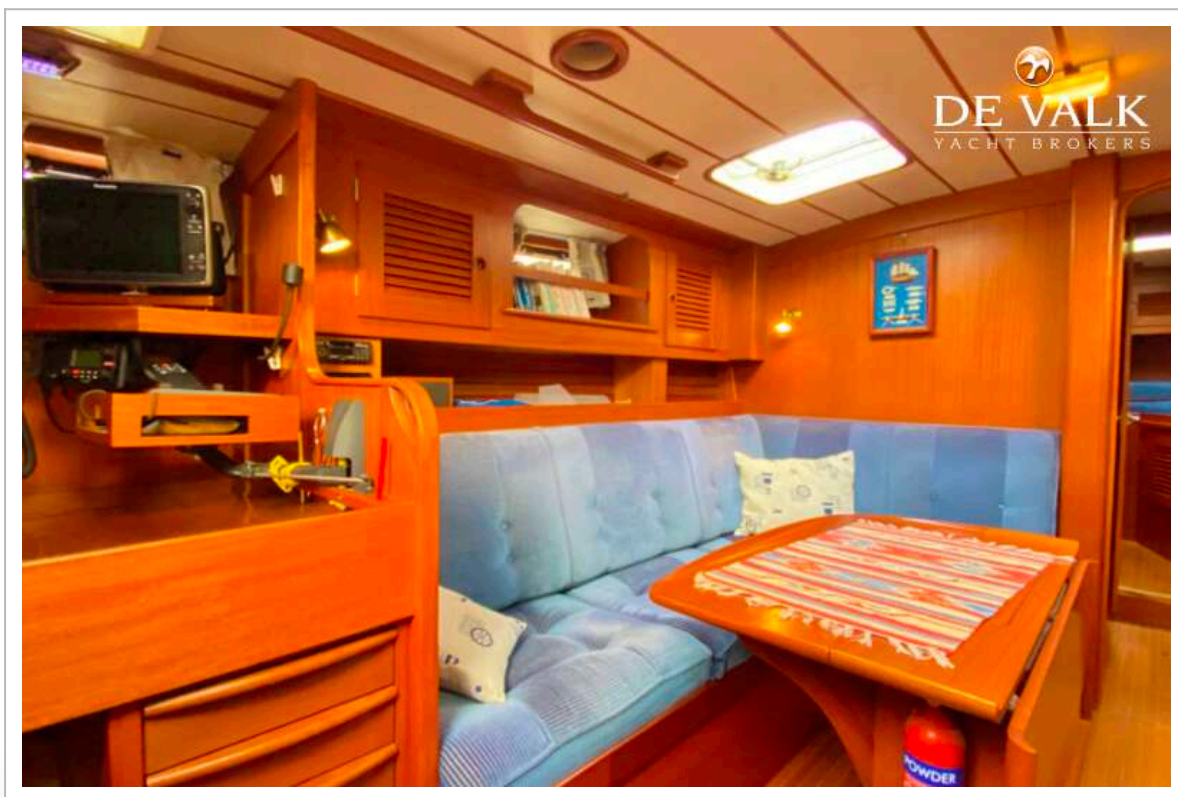
HALLBERG RASSY 42 E



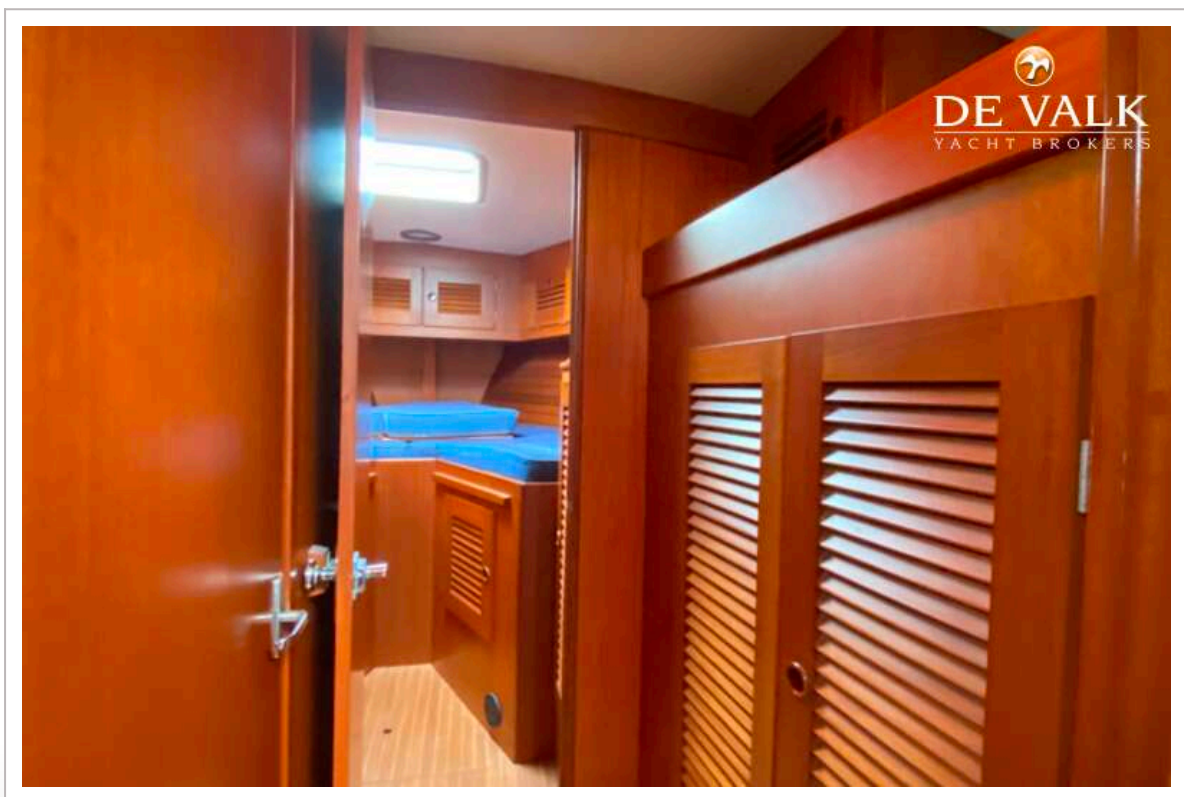
HALLBERG RASSY 42 E



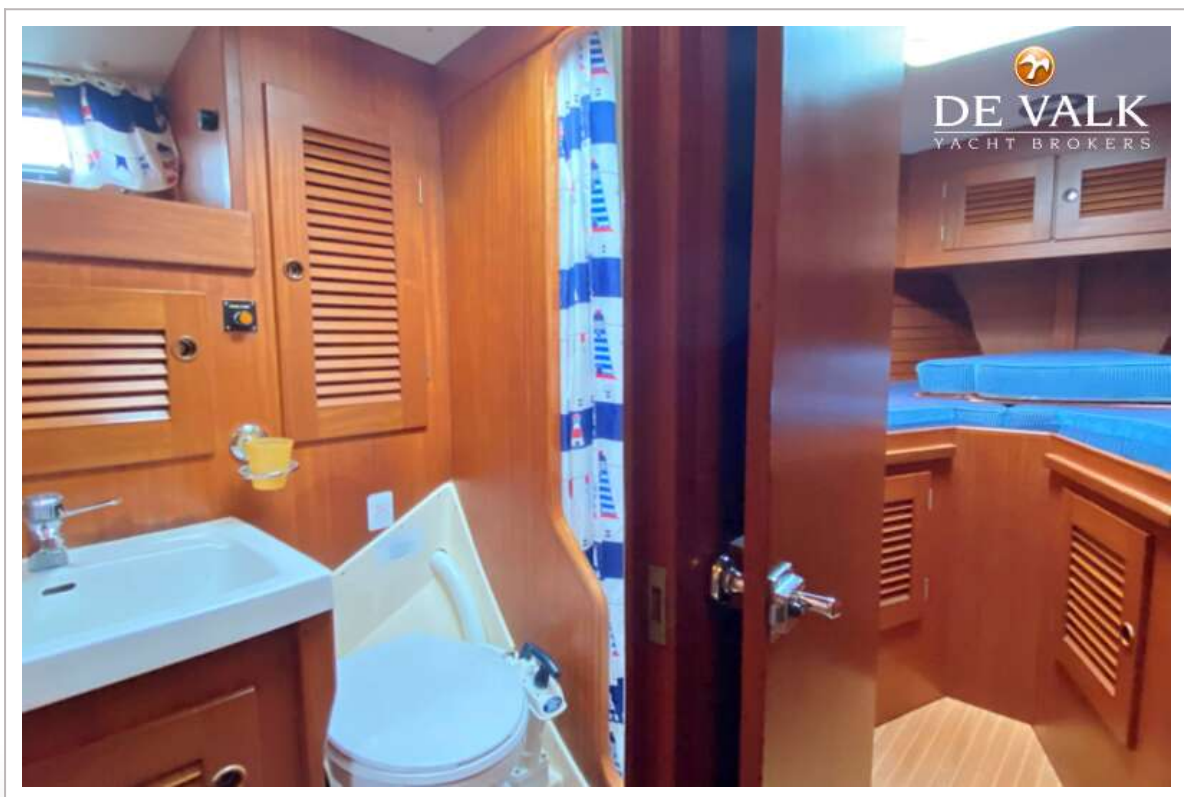
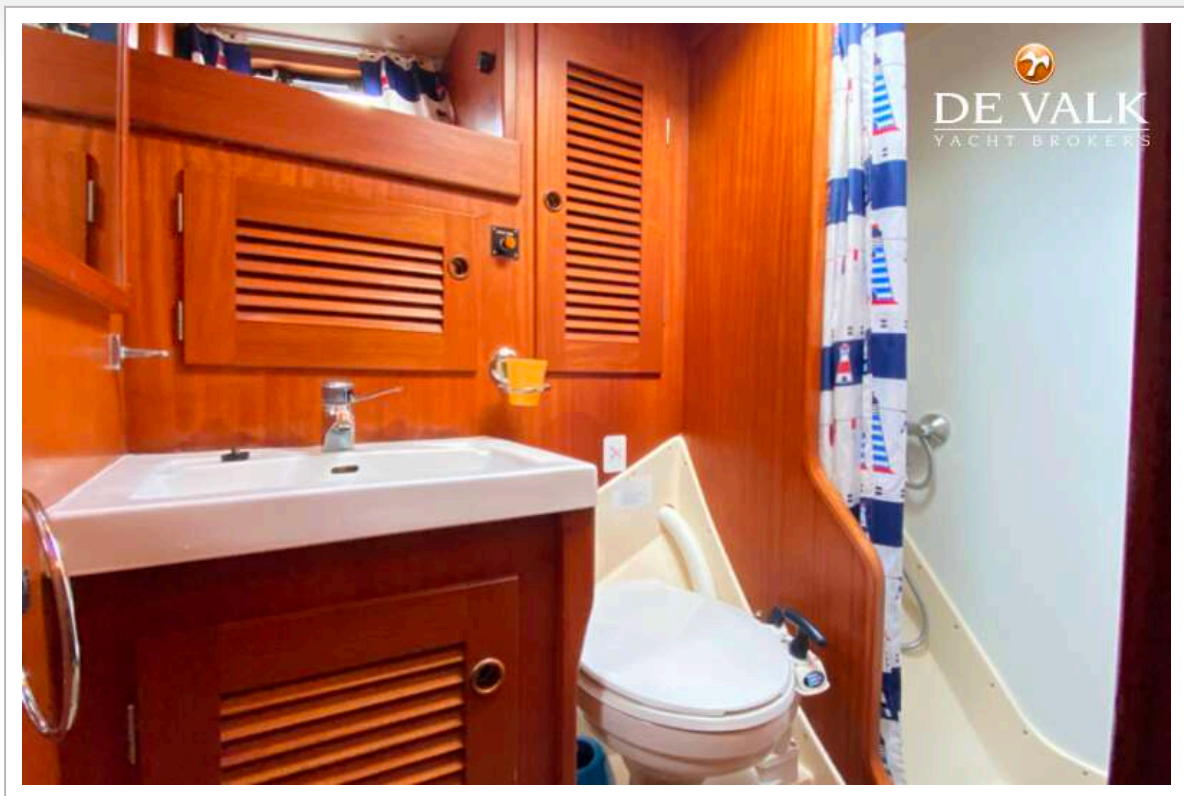
HALLBERG RASSY 42 E



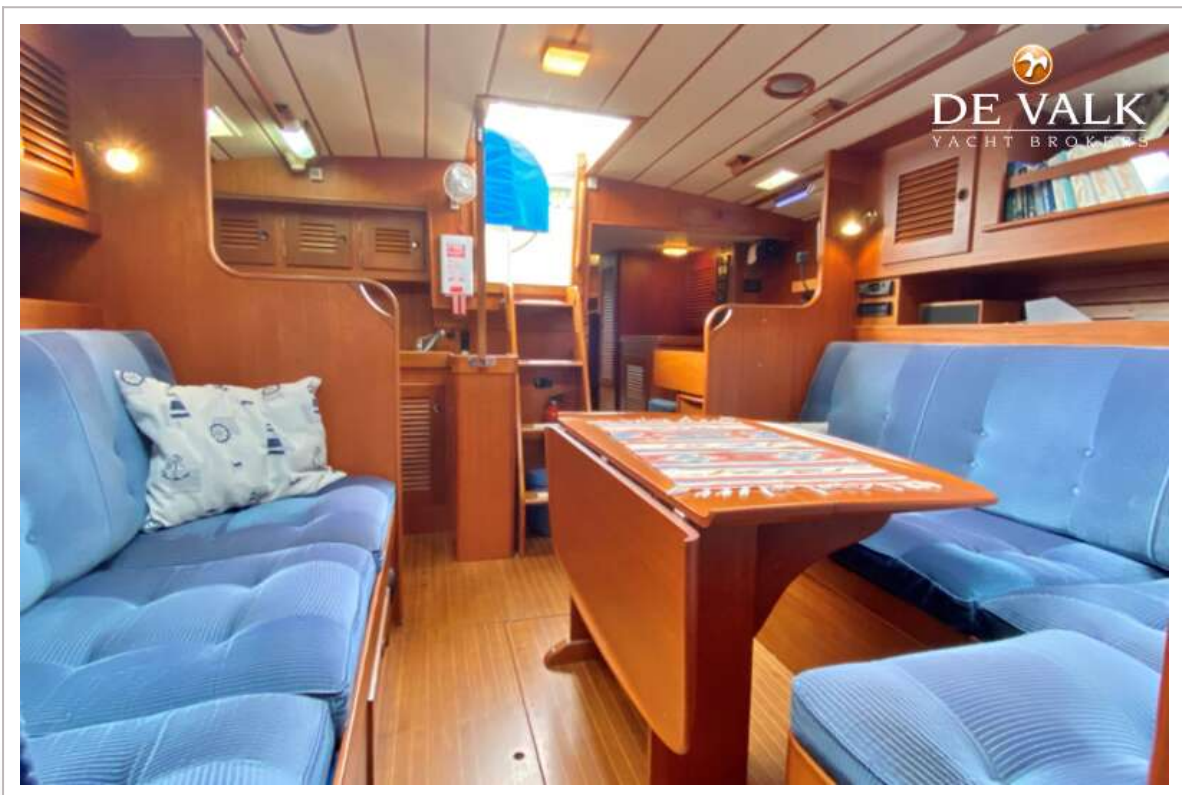
HALLBERG RASSY 42 E



HALLBERG RASSY 42 E



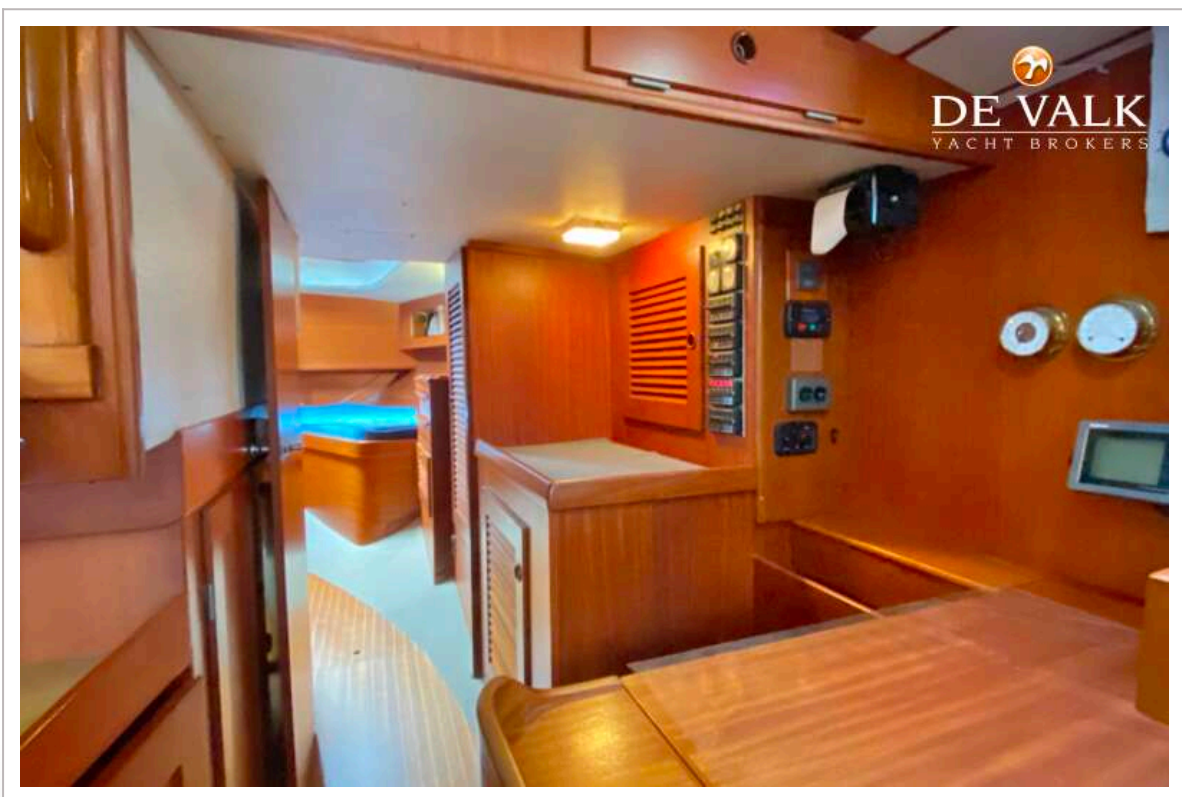
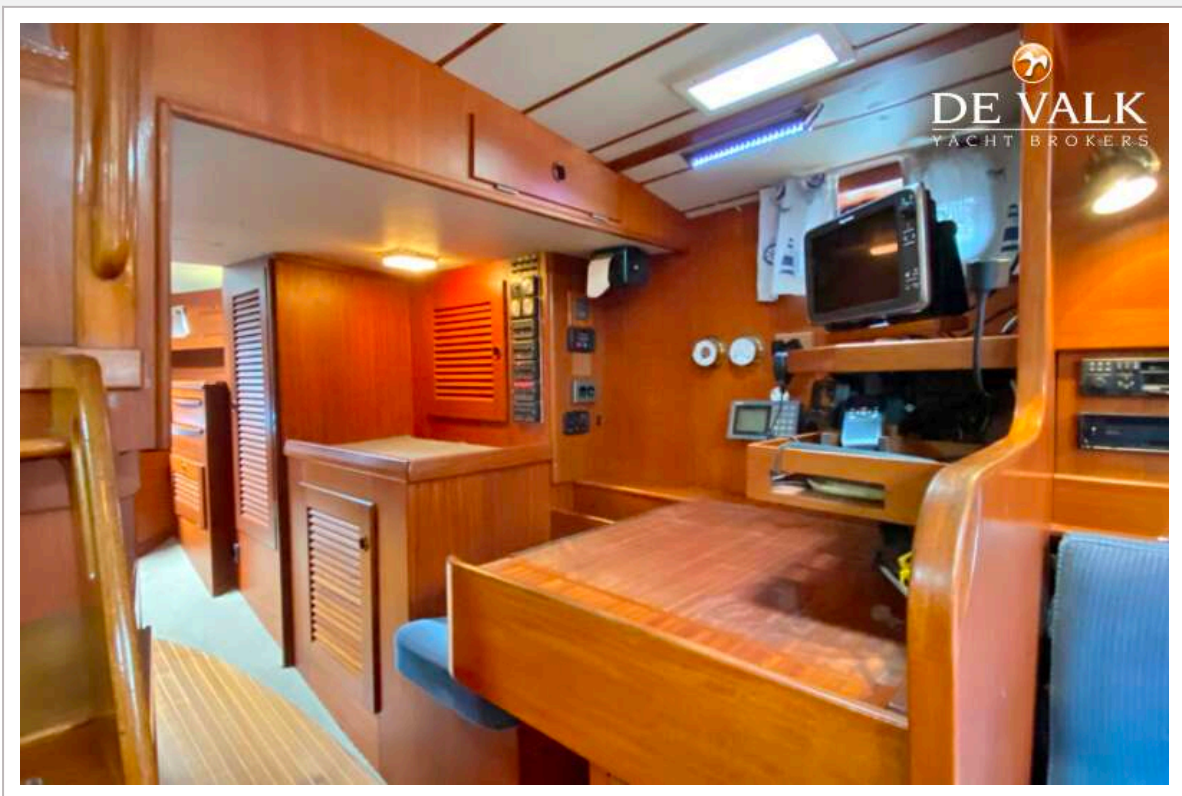
HALLBERG RASSY 42 E



HALLBERG RASSY 42 E



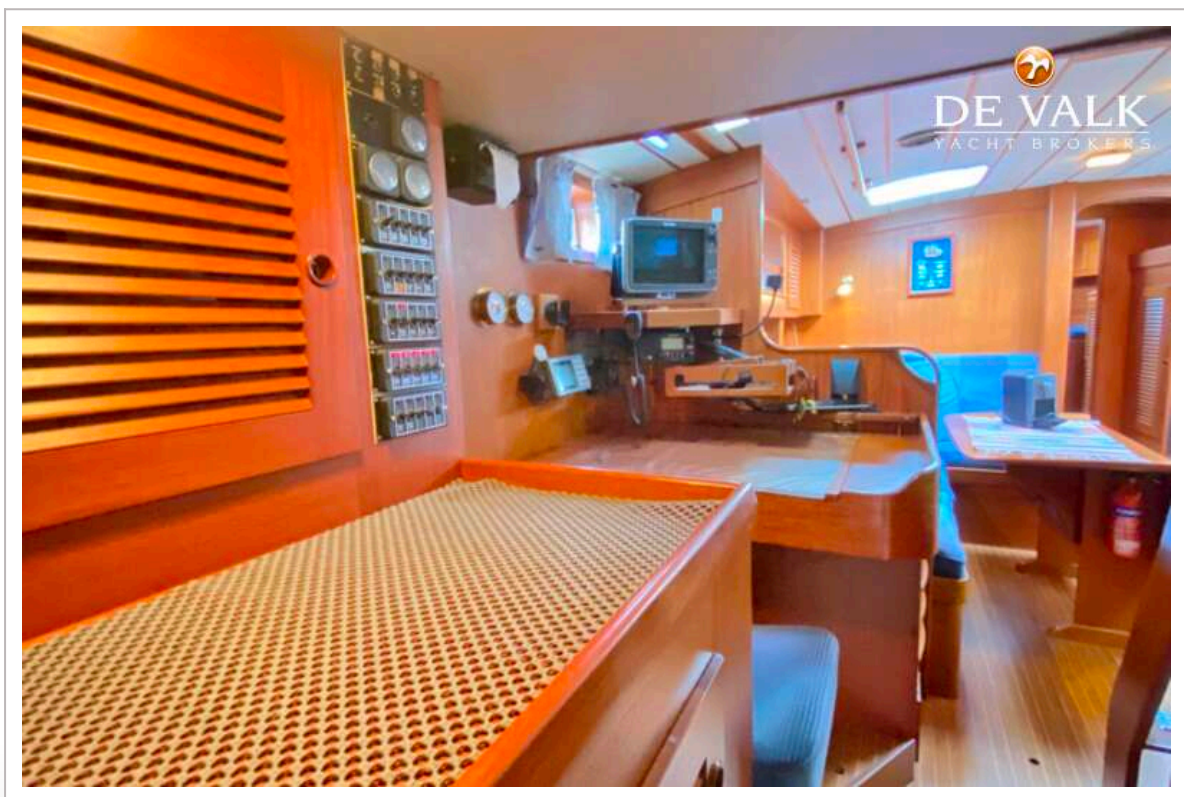
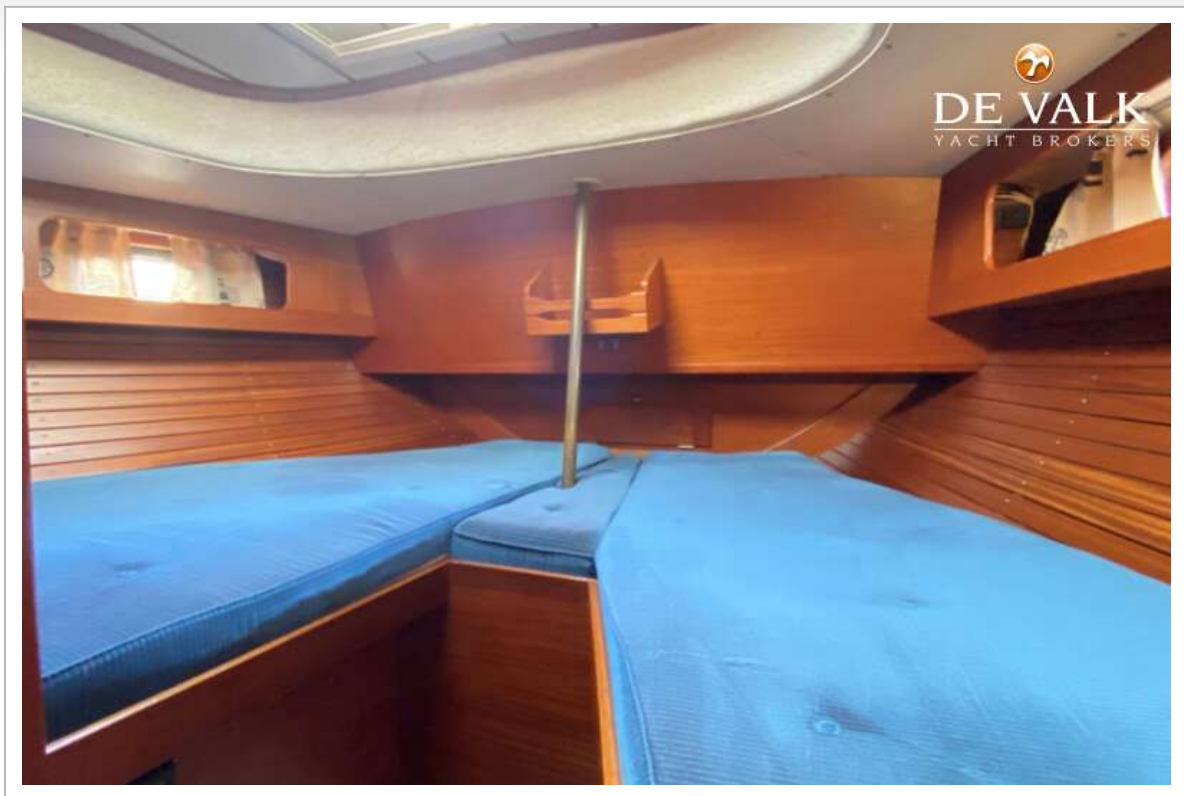
HALLBERG RASSY 42 E



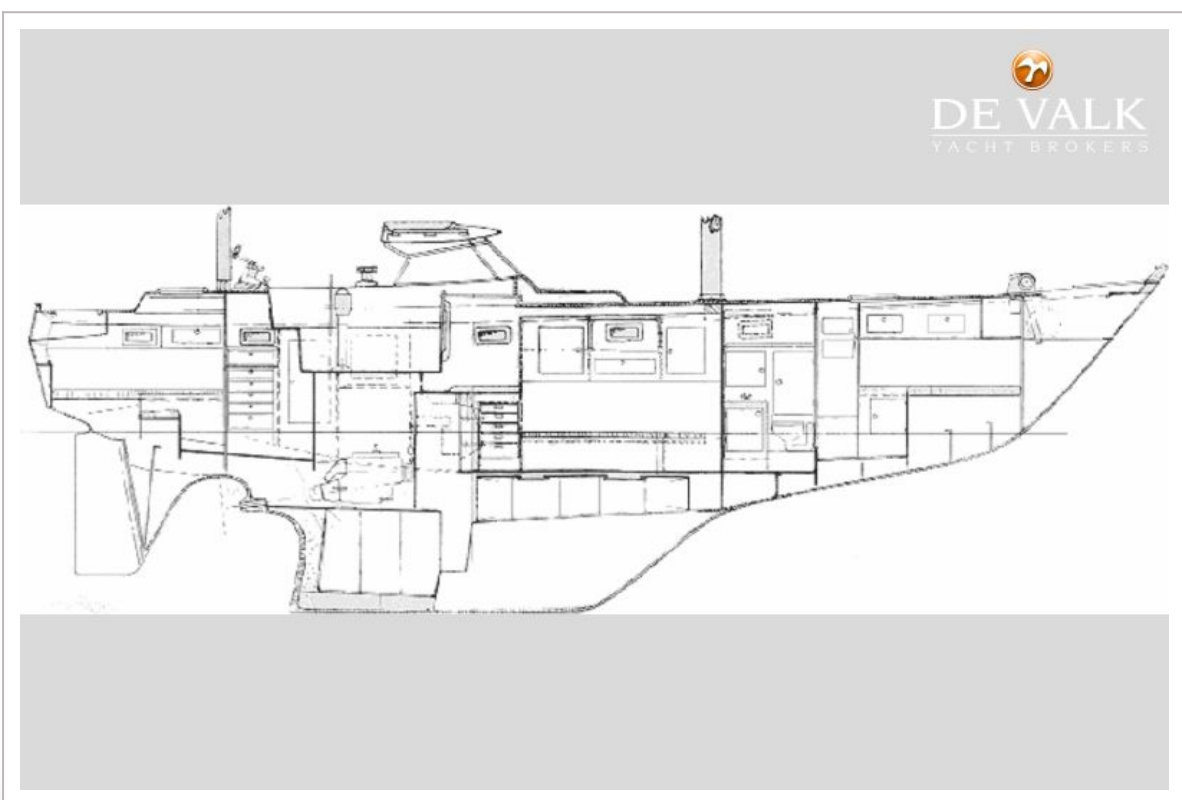
HALLBERG RASSY 42 E



HALLBERG RASSY 42 E



HALLBERG RASSY 42 E



HALLBERG RASSY 42 E

