



## ARGONAUTIC 40 ALUMINIUM OFFSHORE PILOT



# ARGONAUTIC 40 ALUMINIUM OFFSHORE PILOT

## BROKER'S COMMENTS

The Argonautic 40 Aluminium Offshore Pilot is a unique design & very robustly built, according to Lloyds 'Special Service Craft Scantling Rules'. The boat is equipped with Iveco engines driven waterjets (with only 140 hours). The waterjets & the Vector Stick control are an integrated Rolls-Royce Kamewa Steering System. Please contact our office in Sint Annaland to arrange an appointment to visit this unique & fast motorboat in Noord-Brabant, in the south-west of the Netherlands.

*Jan-Ward van Dantzig*

## SPECIFICATIONS

<b>Dimensions</b>	11.98 x 4.47 x 0.76 (m)	<b>Builder</b>	Alumarine BV
<b>Built</b>	2006	<b>Cabins</b>	2
<b>Material</b>	Aluminium	<b>Berths</b>	6
<b>Engine(s)</b>	2 x Iveco NEF N60 ENT M40.10 diesel	<b>Hp/Kw</b>	2 x 400.00 (hp), 294.40 (kw)
<b>Asking price</b>	€ 189.000 (VAT Paid)	<b>Lying</b>	elsewhere / Not at sales office

## CONTACT

<b>Sales office</b>	De Valk Sint Annaland B.V.	<b>Telephone</b>	+31 (0)166 601 000
<b>Address</b>	Koelhuisweg 4 4697 RM Sint Annaland NL	<b>E-mail</b>	sintannaland@devalk.nl

## DISCLAIMER

These particulars are given in good faith as supplied but cannot be guaranteed.



# ARGONAUTIC 40 ALUMINIUM OFFSHORE PILOT

## GENERAL

Model	ARGONAUTIC 40 ALUMINIUM OFFSHORE PILOT
Type	motor yacht
LOA (m)	11,98
LWL (m)	11,20
Beam (m)	4,47
Draft (m)	0,76
Air draft (m)	5,60
Air draft min (m)	3,20
Headroom (m)	2,00
Year built	2006
Builder	Alumarine BV
Country	The Netherlands
Designer	Argonautic
Displacement (t)	11
CE norm	B
Hull material	aluminium
Hull colour	blue Royal Blue (ALW Grip)
Hull thickness (mm)	6 (hull) - 8 (around the welded in waterjets) - 10 (stern)
Hull shape	deep-V
Superstructure material	aluminium
Superstructure (mm)	6 (and Alucore plates around the Pilothouse)
Deck plate thickness (mm)	6
Rubbing strake	Closed cell PE Foam, covered with hot-sprayed Polyurea
Deck material	aluminium
Deck finish	non-skid paint (White)
Superstructure deck finish	paint (White - AWL Grip)
Cockpit deck finish	teak (12 mm)
Antifouling (year)	Partly in 2023. Old layers antifouling should be removed
Dorades	1 x
Window frame	Custom glassfiber reinforced pultrusion sections, painted black



# ARGONAUTIC 40 ALUMINIUM OFFSHORE PILOT

Window material	double glazing Rafa : 3 x harded glass - ISO Tested Light - tinted glass
Deckhatch	Lewmar
Insulation	foam (Sprayed)
Mast can be lowered	hydraulic (Aluminium white spray painted antenna mast)
Fuel tank (litre)	aluminium 900 (in centre of boat)
Level indicator (fuel tank)	yes
Fuel daytank (litre)	aluminium 700 (under front cabin)
Level indicator (daytank)	yes
Freshwater tank (litre)	polyethylene 250
Level indicator (freshwater)	yes
Blackwater tank (litre)	polyethylene 50
Level indicator (blackwater)	yes
Blackwater tank extraction	deck extraction + pump (Electric pump)
Wheel steering	electric & hydraulic - Rolls-Royce Kamewa system
Inside helm position	Varnished teak Rolls-Royce steering wheel
Emergency tiller	Emergency differential steering with waterjets via backup panel
More info on hull	Only plastic sea cocks & through hull connectors mounted
More info on paintwork	The exterior paintwork needs attention
Extra info	The boat is built with 5083 seawater resistant aluminum
Extra info	Acrosoma 5 cm thick pilothouse roof with PU Isolation
Extra info	Glass in starboard door needs to be replaced with double glazing

## ACCOMMODATION

Cabins	2
Berths	6
Interior	cherry With white vinyl and white panels (spray painted with Alex Seal)
Floor	wood (Teak with black strips)
Open cockpit	(When bathing platform is down)
Aft deck	yes
Pilot house/deck saloon	yes



# ARGONAUTIC 40 ALUMINIUM OFFSHORE PILOT

Saloon	yes
Headroom saloon (m)	2,30
Sliding roof	manual
Heating	central heating 2 x Webasto Madera 4 (each connected to one engine)
Heating 2	central heating Webasto CPAC160 16.000BTU (heat-pump needs attention)
Air-conditioning	reverse cycle airco Webasto CPAC160 16.000BTU heat-pump(to check) with seawater pump
Dining room	yes
Convertible berth	In steering area (2,00 x 1,20 m) - Headroom 1,85 m
Opening door to aft deck	2 x Folding doors
Galley	On starboard side in the pilothouse - Headroom 2,30 m
Countertop	corian (Black with white dots)
Sink	stainless steel 2 x
Cooker	ceramic Miele - 2 x burner
Fridge	Front opening fridge with Vrigomatic compressor (24 Volt)
Freezer	Small freezer compartment in the fridge
Hot water system	220V + engine 40 liter boiler (heats via starboard engine)
Water pressure system	electrical
Coffee maker	Nespresso
Owners cabin	double bed In front cabin (headroom 1,90 m) with double Swissflex SF500 bed
Bed length (m)	1,95 x 1,60
Wardrobe	hanging and shelves
Bathroom	en suite (and shared) - Headroom 1,92 m
Toilet	shared
Toilet system	electric Jabsco
Wash basin	in the bathroom
Shower	en suite With double shower head & automatic drain pump - Headroom 1,95 m
Extra info	Swissflex SF500 beds with manual control and slatts
Guest cabin 1	twin single Under steering position - Headroom 1,65 m



# ARGONAUTIC 40 ALUMINIUM OFFSHORE PILOT

Bed length (m)	2,00 x 0,85 & 2,00 x 0,80
Wardrobe	shelves
Extra info	Port side mattress is new. Starboard side bed without mattress
Washing machine	ONLY prepared for washing machine (in cabin under steering area)
Extra info	Leather swiveling and height-adjustable Sparco helmsman's seat
Extra info	Honeycomb sandwich alu plates used for floor & structural walls

## MACHINERY

No of engines	2
Make	Iveco NEF
Type	N60 ENT M40.10
HP	400
kW	294.40
Fuel	diesel
Year installed	2006
Maximum speed (kn)	22,5
Cruising speed (kn)	7
Consumption (l/hr)	40
Engine hours	135 & 142
Engine cooling system	freshwater heat exchanger (Very large cooling water filters can be linked to supply both)
Drive	jet-drive
Engine controls	electrical Rolls-Royce (Kamewa) Vector Stick (with transit & docking mode)
Gearbox	hydraulic ZF280
Exhaust	watercooled
Manual bilge pump	1 x
Electric bilge pump	2 x automatic and 1 x electric (switchable for 4 areas)
Electrical installation	12 & 24 & 230 Volt
Generator	silent separator Onan 5kW, condition unknown, needs service. Halyard exhaust



# ARGONAUTIC 40 ALUMINIUM OFFSHORE PILOT

Running hours generator	7
Start battery	2 x 85 Ah Exide - 24 Volt (new in 2022)
Service battery	2 x 240 Ah - 24 Volt gel Mastervolt (new in 2023)
Generator battery	1 x 12 Volt - Needs to be renewed
Battery monitor	Mastervolt Mass Inverter Charger Controller
Battery charger	Mastervolt 12V/25A
Battery charger/inverter	Mastervolt 24V/100A/2.000W
Diode battery combiners	Emergency switch to connect start & domestic batteries
Shorepower	with cable
Insulation transformer	Mastervolt MASS G1 3.5
Auto positioning system	yes
Trimtabs	Interceptors on waterjet system - hydraulic controlled
Extra info	Steering via 2 x Rolls-Royce (Kamewa) FF310 waterjet system & via backup & via backup buckets
Extra info	Diesel Polishing system (Separ SWK 2000/40 MK Filter)
Extra info	The stringers supporting the engine mounts and waterjet loads are extended to spread the loads in the hull structure

## NAVIGATION

Electric compass	Maretron (NMEA 2000 connected)
Depth sounder	Maretron (NMEA 2000 connected)
Log	Maretron (NMEA 2000 connected)
VHF	Sailor A1 (needs a new back-up battery)
Navigation lights	yes
Extra info	LED lights in the cockpit

## EQUIPMENT

Sun awning	Blue Performance (over the cockpit)
Cockpit table	Teak (foldable)
Cockpit chairs	2 x Foldable teak directors chair with blue cloth



# ARGONAUTIC 40 ALUMINIUM OFFSHORE PILOT

Bathing platform	Hydraulic controlled & covered with teak (Aluminium = 5mm thick)
Boarding ladder	aluminum Removable & floating white spray painted (never used)
Deck shower	(In the cockpit - hot & cold water)
Anchor	Bruce With a manual folding anchor fitting
Anchor chain	20 meter galvanised (in a PE anchor chain locker with a drain)
Anchor 2	Danforth Aluminium - without a rope (never used)
Windlass	electrical Quick 24 Volt (New buttons on the bow and a new solenoid relais)
Deck wash	Connection on bow and stern (needs to be tested, never used)
Sea railing	aluminum (White spray painted)
Grab rail (superstructure)	aluminium (White spray painted)
Pushpit	Aluminium (white spray painted)
Wiper	6 x Speich with spray position
Horn	(Manual)
Fenders	yes
Mooring lines	yes
Spare parts	yes
TV	yes
TV receiver	yes
Fire extinguisher	1 x (new in 2023)
Extinguisher in engine room	Surveyed in 2023 in Port Side engine room
Auto extinguisher system	Mabo in Starboard engine room (new in 2023)
Extra info	The boat has an A-Symmetric deck layout
Extra info	Manuals engines, jets, Rolls-Royce available, no design-drawings
Extra info	The boat is CE Certified - Category B - in November 2023, with the following WIN Code : NL-DMEDE341J323





# ARGONAUTIC 40 ALUMINIUM OFFSHORE PILOT



# ARGONAUTIC 40 ALUMINIUM OFFSHORE PILOT



# ARGONAUTIC 40 ALUMINIUM OFFSHORE PILOT





# ARGONAUTIC 40 ALUMINIUM OFFSHORE PILOT



# ARGONAUTIC 40 ALUMINIUM OFFSHORE PILOT

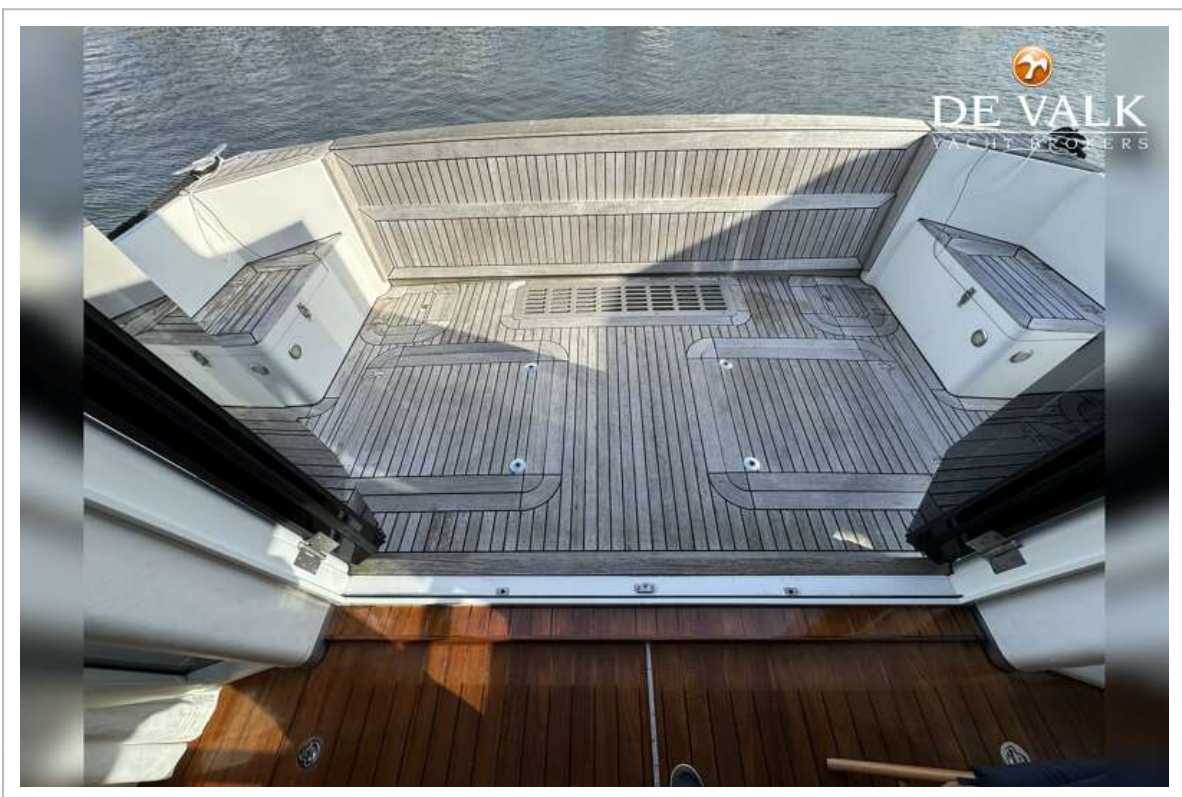


# ARGONAUTIC 40 ALUMINIUM OFFSHORE PILOT

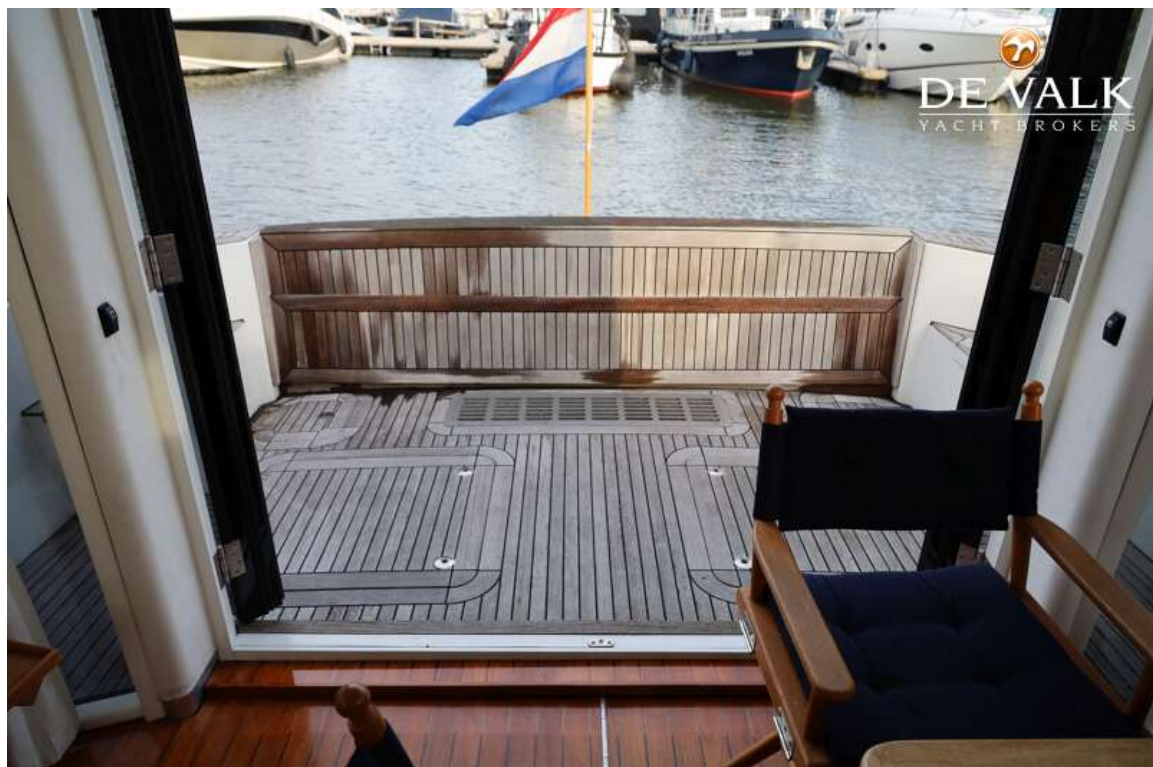
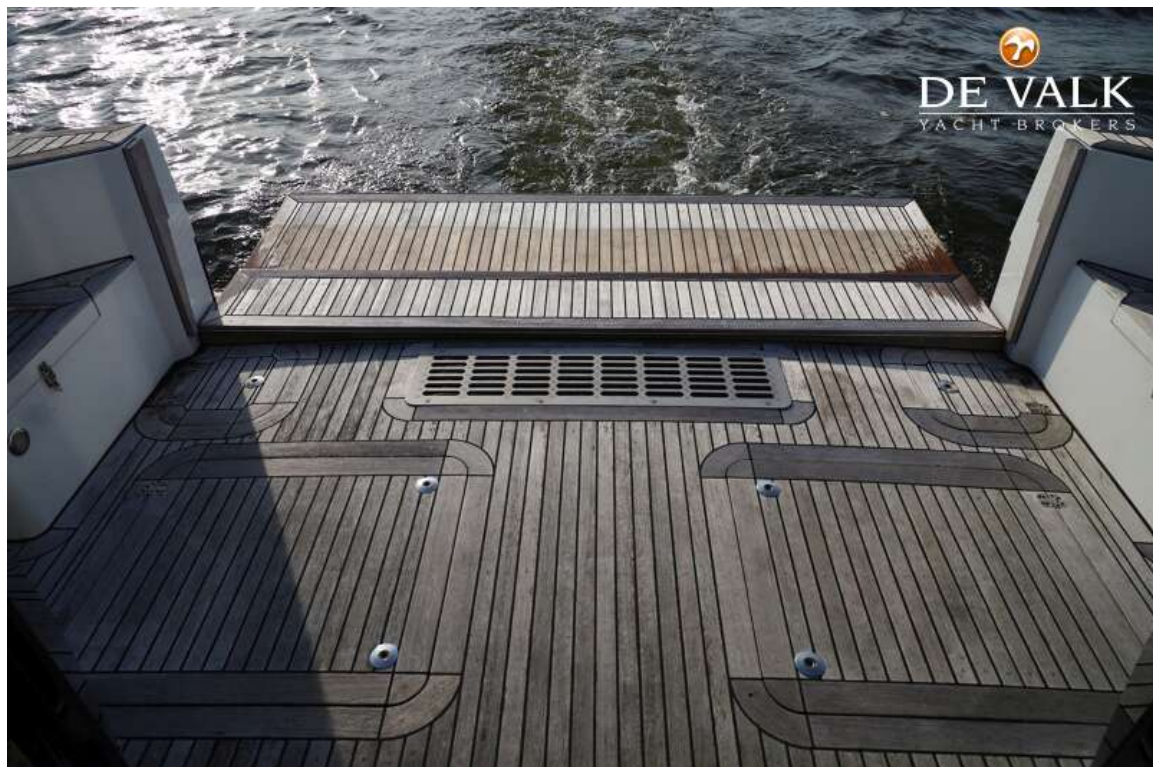




# ARGONAUTIC 40 ALUMINIUM OFFSHORE PILOT

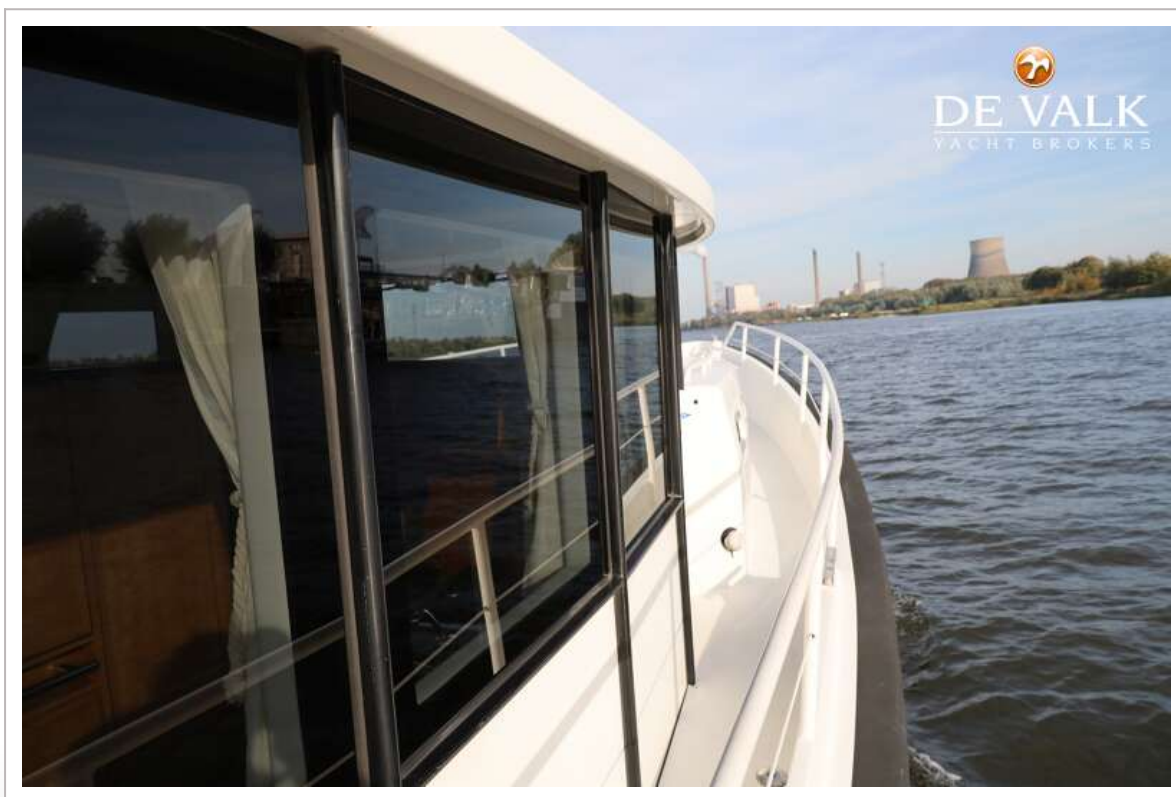


# ARGONAUTIC 40 ALUMINIUM OFFSHORE PILOT

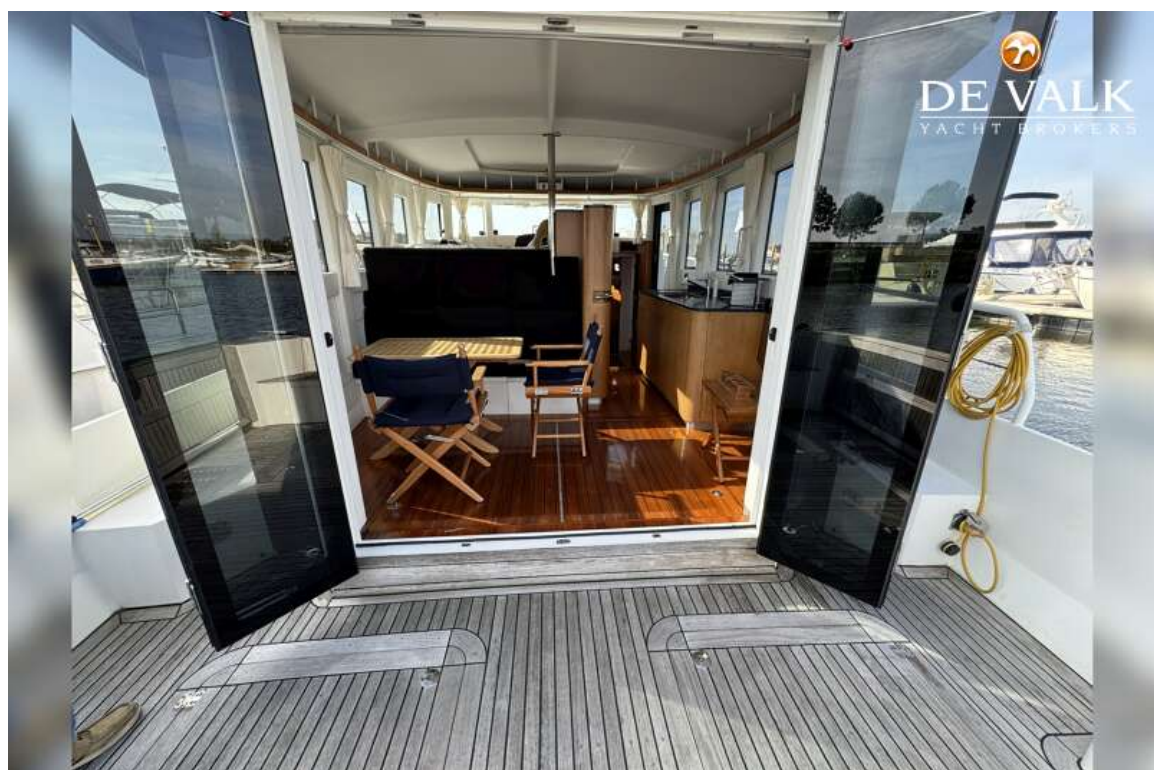




# ARGONAUTIC 40 ALUMINIUM OFFSHORE PILOT

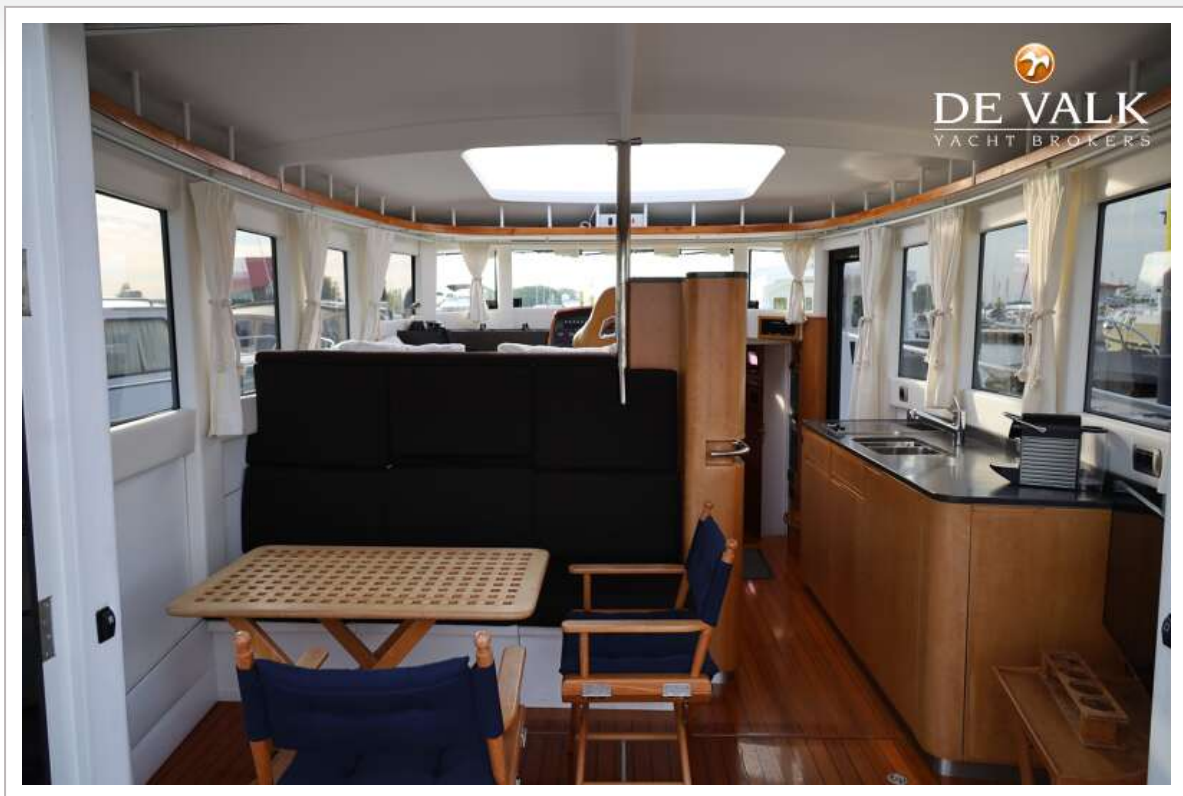


# ARGONAUTIC 40 ALUMINIUM OFFSHORE PILOT





# ARGONAUTIC 40 ALUMINIUM OFFSHORE PILOT



# ARGONAUTIC 40 ALUMINIUM OFFSHORE PILOT

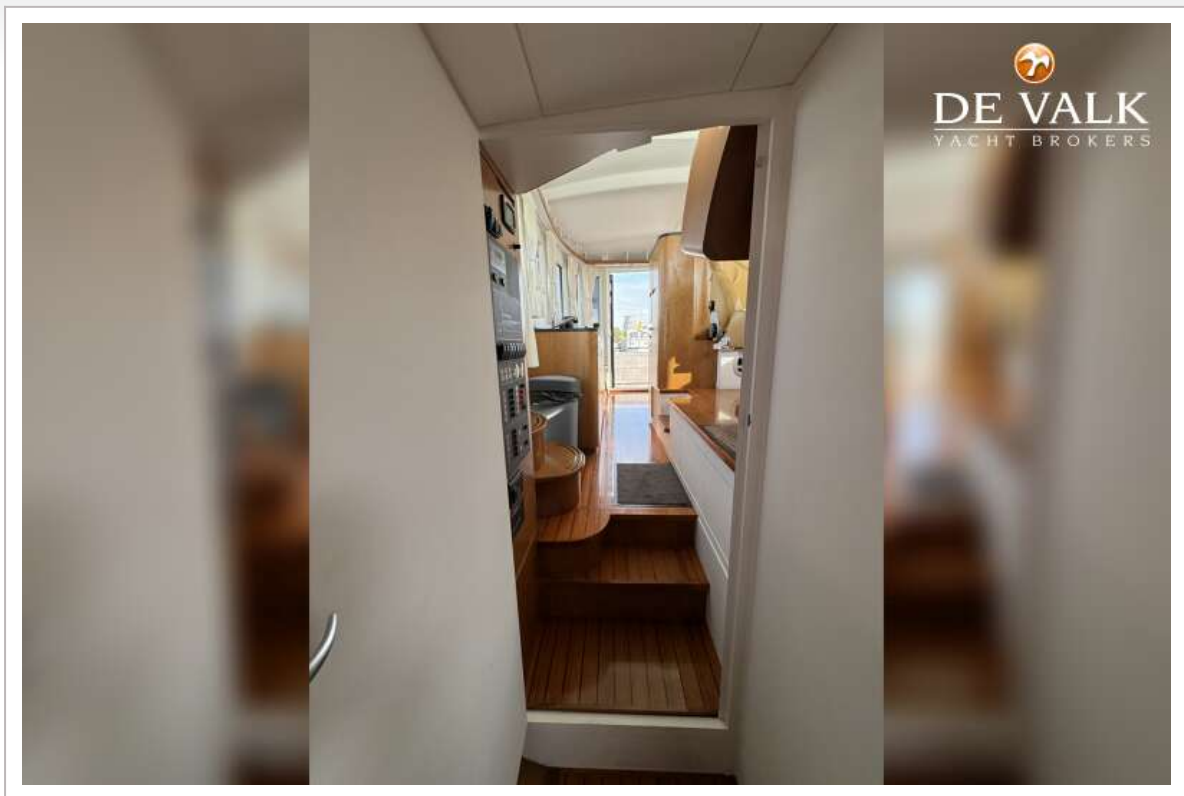




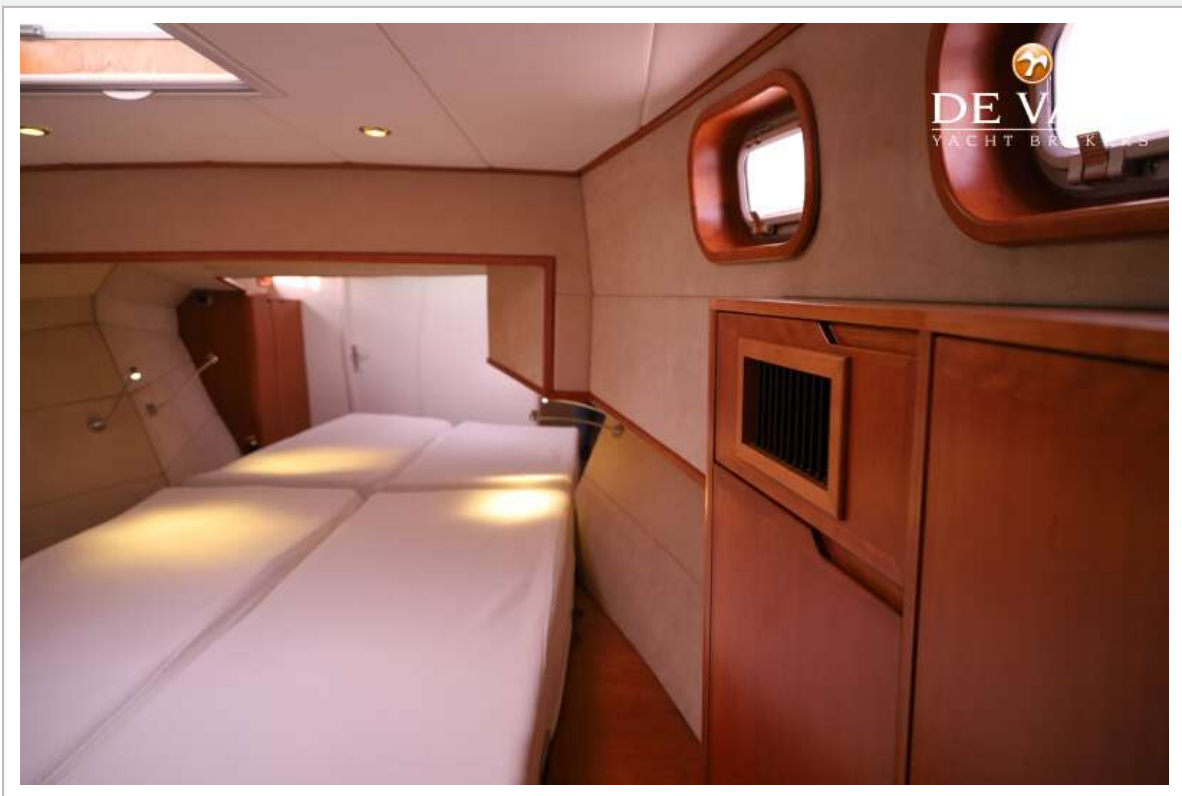
# ARGONAUTIC 40 ALUMINIUM OFFSHORE PILOT



# ARGONAUTIC 40 ALUMINIUM OFFSHORE PILOT

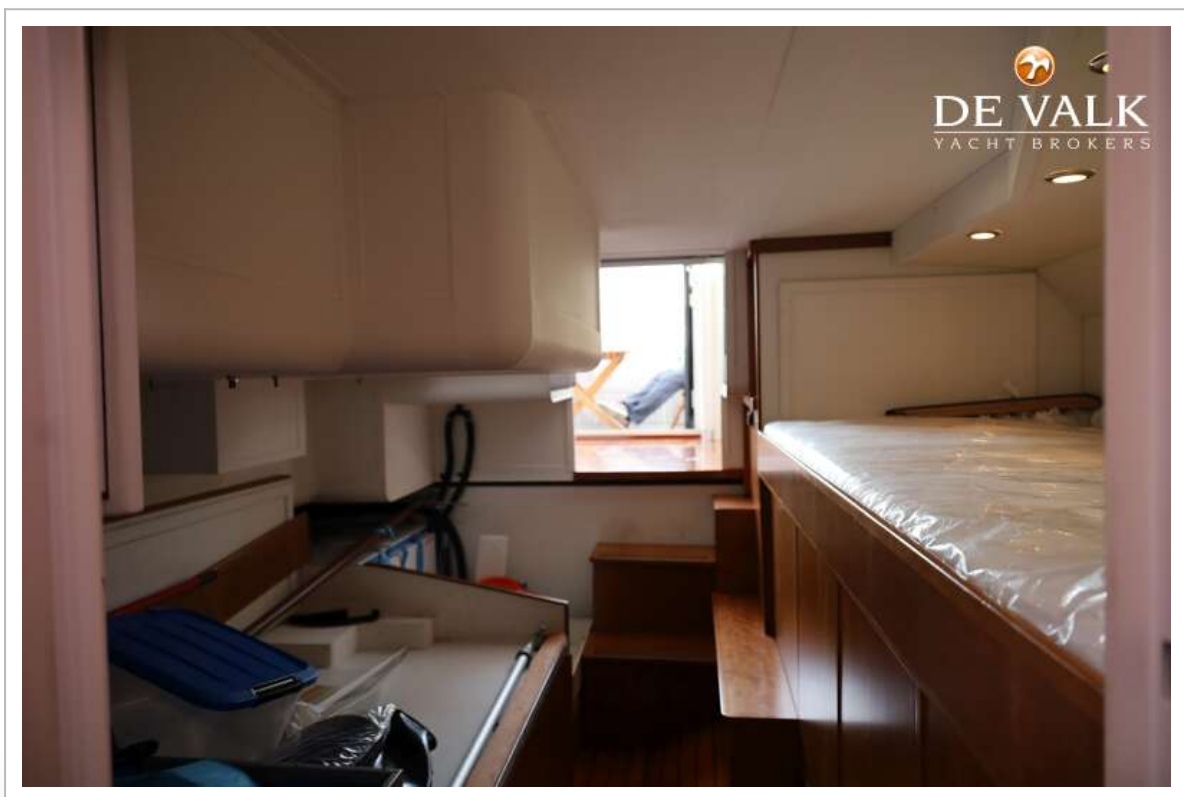
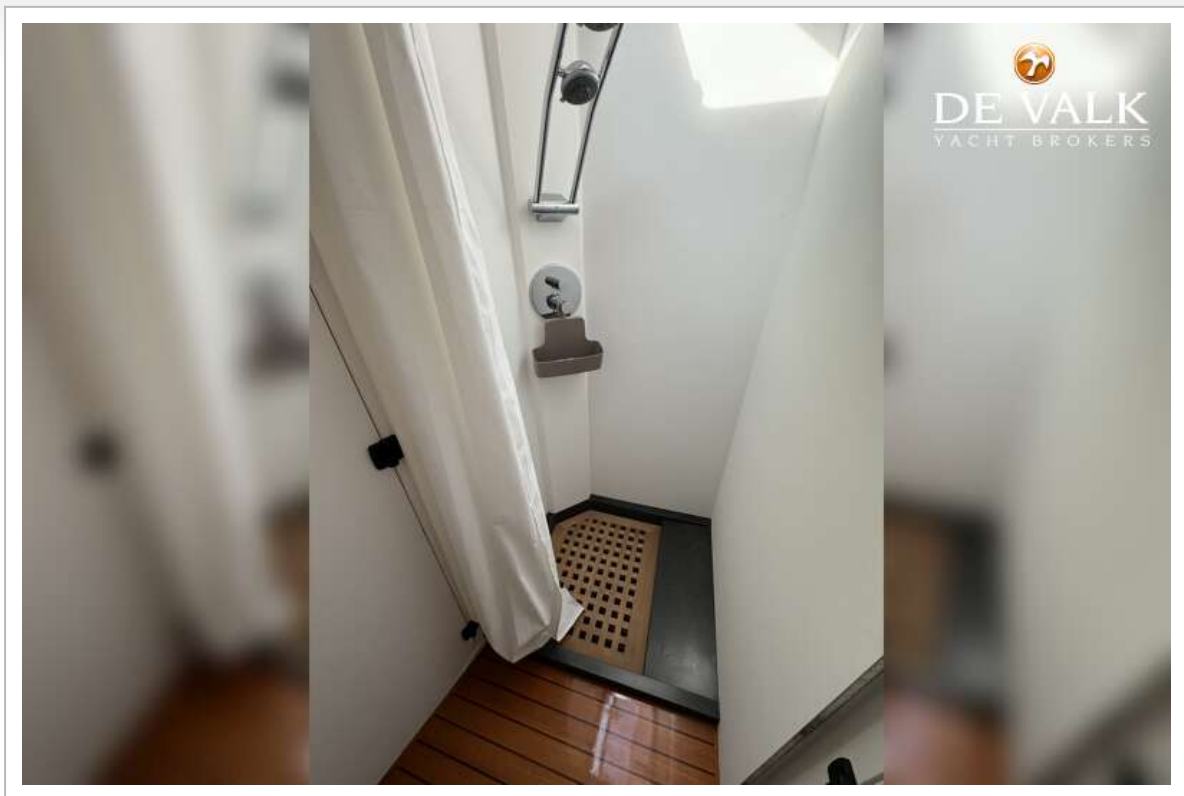


# ARGONAUTIC 40 ALUMINIUM OFFSHORE PILOT





# ARGONAUTIC 40 ALUMINIUM OFFSHORE PILOT





# ARGONAUTIC 40 ALUMINIUM OFFSHORE PILOT

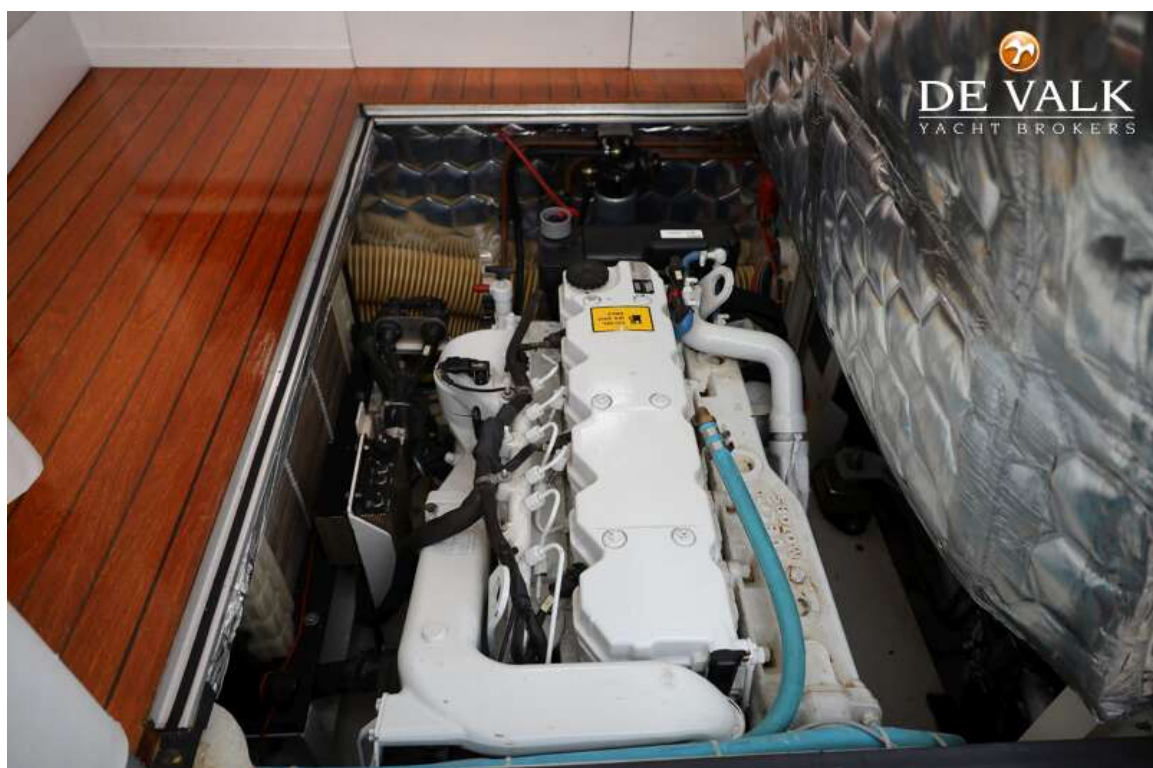
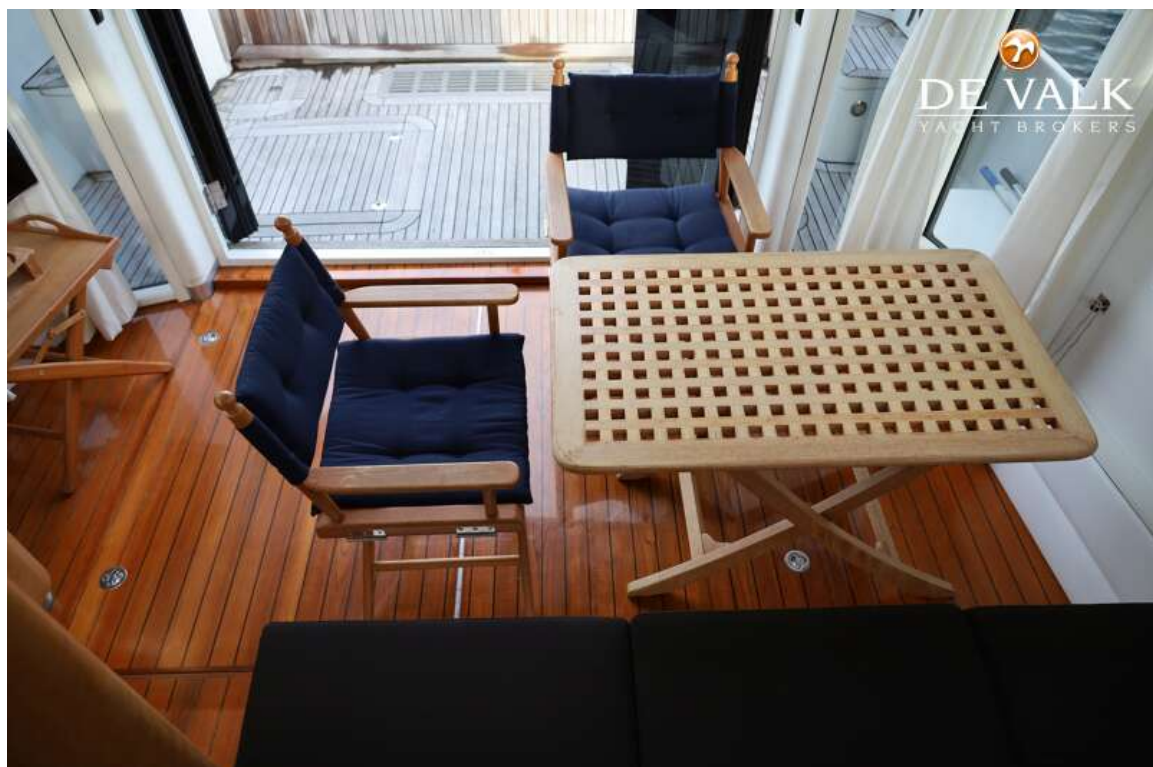


# ARGONAUTIC 40 ALUMINIUM OFFSHORE PILOT

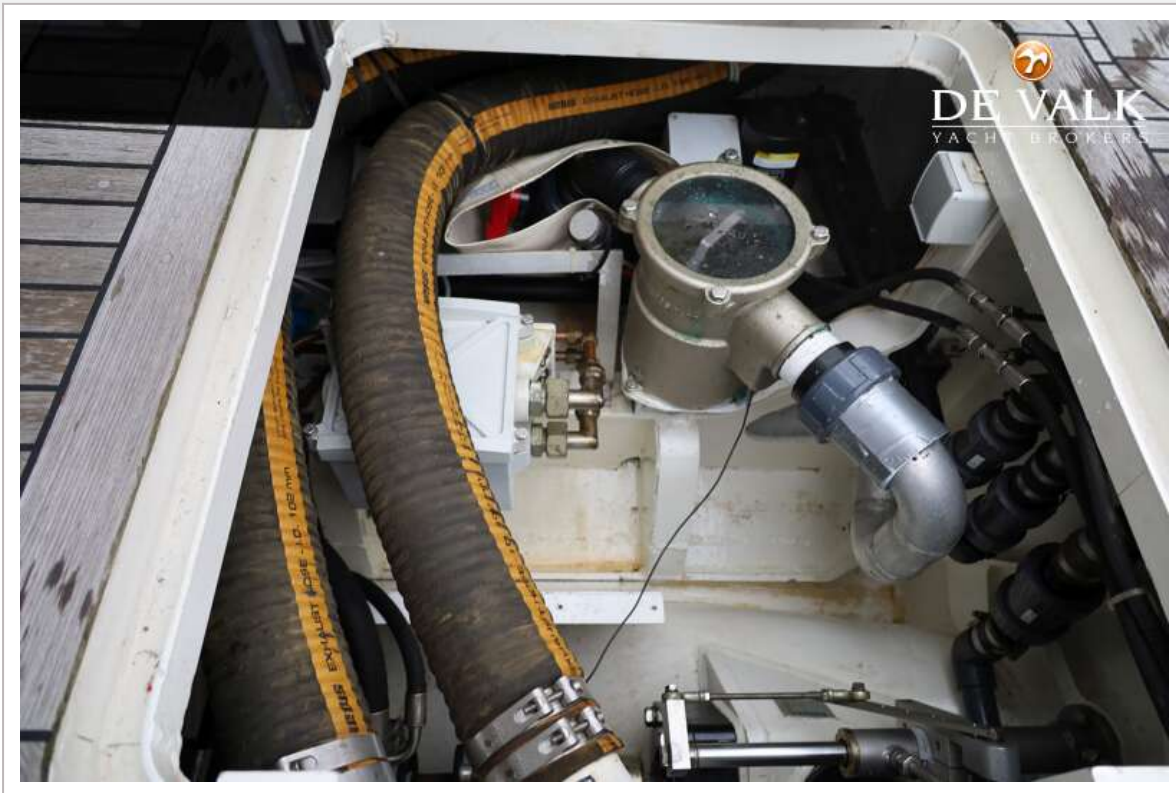




# ARGONAUTIC 40 ALUMINIUM OFFSHORE PILOT



# ARGONAUTIC 40 ALUMINIUM OFFSHORE PILOT





# ARGONAUTIC 40 ALUMINIUM OFFSHORE PILOT



# ARGONAUTIC 40 ALUMINIUM OFFSHORE PILOT

