



## HANS CHRISTIAN 48T



## BROKER'S COMMENTS

Is the Hans Christian 48T the ultimate blue water cruiser? I strongly think she is close to that. Vasco offers a very strong, solid and reliable base to start with, with a superb running overhauled engine. No doubt she needs love and attention outside. But therefore, she is very attractively priced. Just calculate reserves to make her your perfect go-any-where-in-the- world traveller. All very doable, just let me simply talk you through by phone. For sure a direct viewing will convince you even more!

*Willem Koopmans*

## SPECIFICATIONS

<b>Dimensions</b>	17.40 x 4.20 x 1.98 (m)	<b>Builder</b>	
<b>Built</b>	1988	<b>Cabins</b>	3
<b>Material</b>	GRP	<b>Berths</b>	7
<b>Engine(s)</b>	1 x Yanmar 4LH-TE diesel	<b>Hp/Kw</b>	110.00 (hp), 80.96 (kw)
<b>Asking price</b>	sold (VAT )	<b>Lying</b>	contact sales office

## CONTACT

<b>Sales office</b>	De Valk Costa Blanca	<b>Telephone</b>	+34 96 50 21 569
<b>Address</b>	Costa Blanca Region 03730 Javea Alicante ES	<b>E-mail</b>	costablanca@devalk.nl

## DISCLAIMER

These particulars are given in good faith as supplied but cannot be guaranteed.



## GENERAL

Model	HANS CHRISTIAN 48T
Type	sailing yacht
LOA (m)	17,40
LWL (m)	14,60
Beam (m)	4,20
Draft (m)	1,98
Air draft (m)	19,50
Headroom (m)	2,00
Year built	1988
Launched	1988
Displacement (t)	21
Ballast (tonnes)	lead 6.5
CE norm	NA
Hull material	GRP
Hull colour	off-white
Hull thickness (mm)	20 to 40
Hull shape	S-bilged
Keel type	long keel
Bilge keels	yes
Superstructure material	GRP
Deck material	GRP
Deck finish	teak Needs attention
Cockpit deck finish	teak Needs attention
Antifouling (year)	June 2022
Dorades	Stainless steel
Window frame	brass
Window material	glass
Deckhatch	yes
Portholes	yes
Fuel tank (litre)	320



Level indicator (fuel tank)	yes
Freshwater tank (litre)	450 (2 tanks)
Level indicator (freshwater)	yes
Blackwater tank extraction	130
Wheel steering	cable steering
Outside helm position	yes
Emergency tiller	yes
More info on hull	Solid and good looking
Extra info	Inside she is neat, clean and no upgrades needed
Extra info	1 of the 5 ever built with two masts. Main is original mast.
Extra info	Mizzen is an "add on" and can be removed. Support needs check.

## ACCOMMODATION

Cabins	3
Berths	7
Interior	Burmese teak interior
Layout	Owner in front, two guest cabins after, large salon and galley
Floor	teak and holly
Heating	Truma
Heating 2	Truma
Navigation center	Electronics can do upgrade to existing standards
Chart table	Big, also great working space for "work on distance"
Aft Cabin	Double
Dinette	Foldable
Convertible berth	In salon as pilot bed with shelf protection
Galley	Huge working space for the chef
Countertop	plastic White
Sink	stainless steel Double
Cooker	calor gas 3 burner
Oven	Force 10, the best you can have!



Fridge	yes
Hot water system	220V + engine
Water pressure system	yes
Owners cabin	double bed Spacious, located in front
Bed length (m)	2
Wardrobe	hanging and shelves
Bathroom	en suite
Toilet	en suite Jabsco
Toilet system	manual
Wash basin	in the bathroom
Shower	en suite
Guest cabin 1	double bed SB aft
Bed length (m)	2
Wardrobe	hanging and shelves
Toilet	shared Jabsco
Toilet system	manual
Wash basin	at the toilet
Guest cabin 2	single bed Port aft
Bed length (m)	2
Wardrobe	yes
Bathroom	yes
Toilet	shared
Toilet system	manual
Wash basin	at the toilet

## MACHINERY

No of engines	1
Make	Yanmar
Type	4LH-TE
HP	110
kW	80.96



Fuel	diesel
Year installed	1988
Year of overhaul	2012. Head gasket/ piston rings/ fuel system/ heat exchanger
Maximum speed (kn)	8,5
Cruising speed (kn)	6.5
Consumption (l/hr)	4
Engine hours	Ca 3700
Engine cooling system	freshwater heat exchanger
Shaft seal	Replaced in 2017 incl. supports
Engine controls	bowden cable
Gearbox	yes
Exhaust	watercooled
Propeller type	fixed
Propeller blades	3
Propeller shaft material	stainless steel
Manual bilge pump	yes
Electric bilge pump	yes
Electrical installation	12/220
Generator	Paguro 4,6 kW, spins but does not start, probably fuel problem
Running hours generator	50
Start battery	1 x new 2020
Service battery	4 x 180 Amp new 2020
Generator battery	yes
Battery charger	2x Victron 12/30/3
Inverter	yes
Wind generator	yes
Shorepower	yes
Extra info	After engine revision approx. 1100 hrs usage

## NAVIGATION

Compass	yes
---------	-----



Electric compass	Fluxgate on pilot
Depth sounder	B&G, needs check or replacement
Log	B&G, needs check or replacement
Windset	B&G, needs check or replacement
VHF	Sailor 2028
Autopilot	Simrad Robertson AP 22
Rudder angle indicator	On autopilot
Plotter	Lowrance HDS 7
Navigation lights	yes
Extra info	Electronics could be upgraded

## EQUIPMENT

Sprayhood	yes
Bimini	yes
Winter cover	yes
Boarding ladder	yes
Deck shower	yes
Anchor	yes
Anchor chain	yes
Windlass	Control at bow and steerposition
Sea railing	yes
Grab rail (superstructure)	yes
Life raft	Plastimo, out of service
Fenders	yes
Mooring lines	yes
Spare parts	yes
Radio-cd player	yes
Fire extinguisher	Out of service date
Extra info	Solid base with for sure work to be done, but as result .....

## RIGGING



<b>Rigging</b>	ketch-cutter 1 of the 5 ever built with Ketch
<b>Standing rigging</b>	wire
<b>Material mast</b>	aluminium
<b>Spreaders</b>	Double
<b>Keel stepped mast</b>	Via internal support main and mizzen
<b>Mainsail cover</b>	yes
<b>Fully battened mainsail</b>	15 years old
<b>Cutterstay</b>	yes
<b>Mizzen</b>	Fully battened, 15 years old; mast support needs reinforcement.
<b>Mizzen sailcover</b>	yes
<b>Jib</b>	Sail 15 years old
<b>Genoa I</b>	Sail 15 year old
<b>Boomvang</b>	yes
<b>Genoa sheetwinches</b>	yes
<b>Halyard winches</b>	yes
<b>Multifunctional winches</b>	yes
<b>Extra info</b>	Sails are in reasonable condition but old





# HANS CHRISTIAN 48T



# HANS CHRISTIAN 48T





# HANS CHRISTIAN 48T



# HANS CHRISTIAN 48T

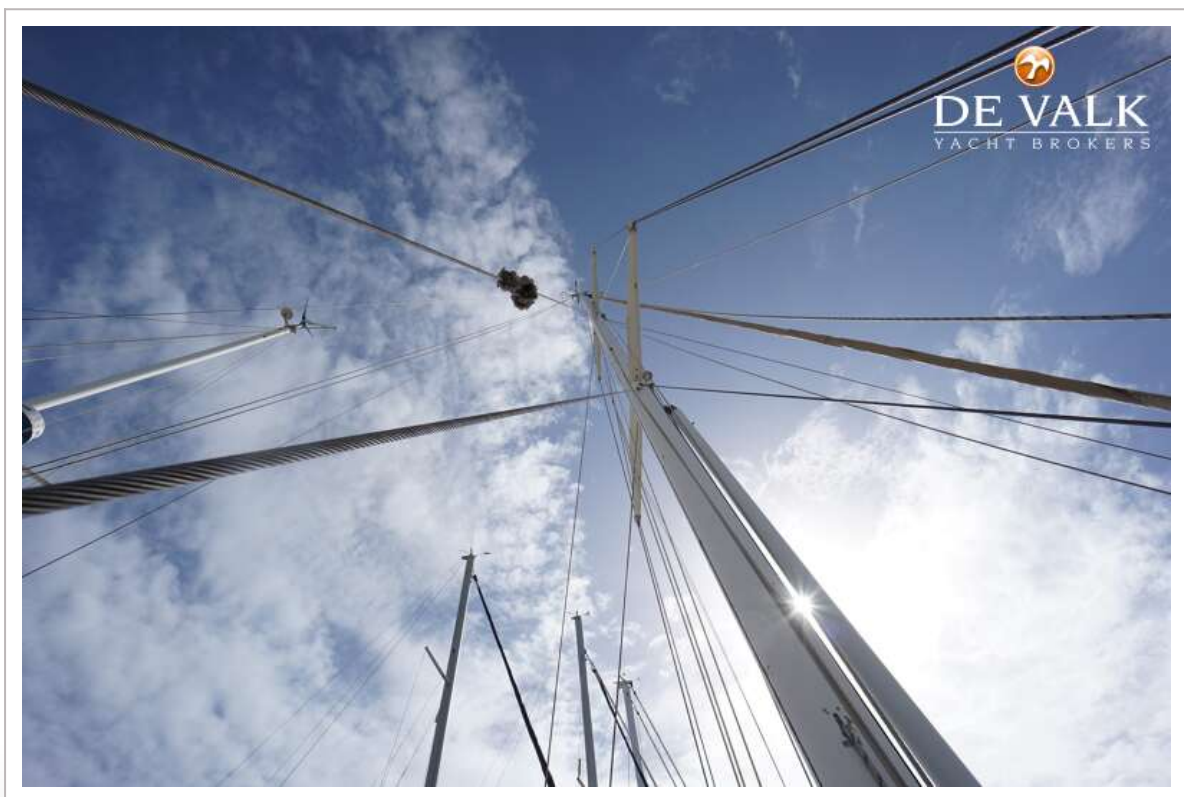




# HANS CHRISTIAN 48T



# HANS CHRISTIAN 48T





# HANS CHRISTIAN 48T





# HANS CHRISTIAN 48T





# HANS CHRISTIAN 48T





# HANS CHRISTIAN 48T





# HANS CHRISTIAN 48T





# HANS CHRISTIAN 48T



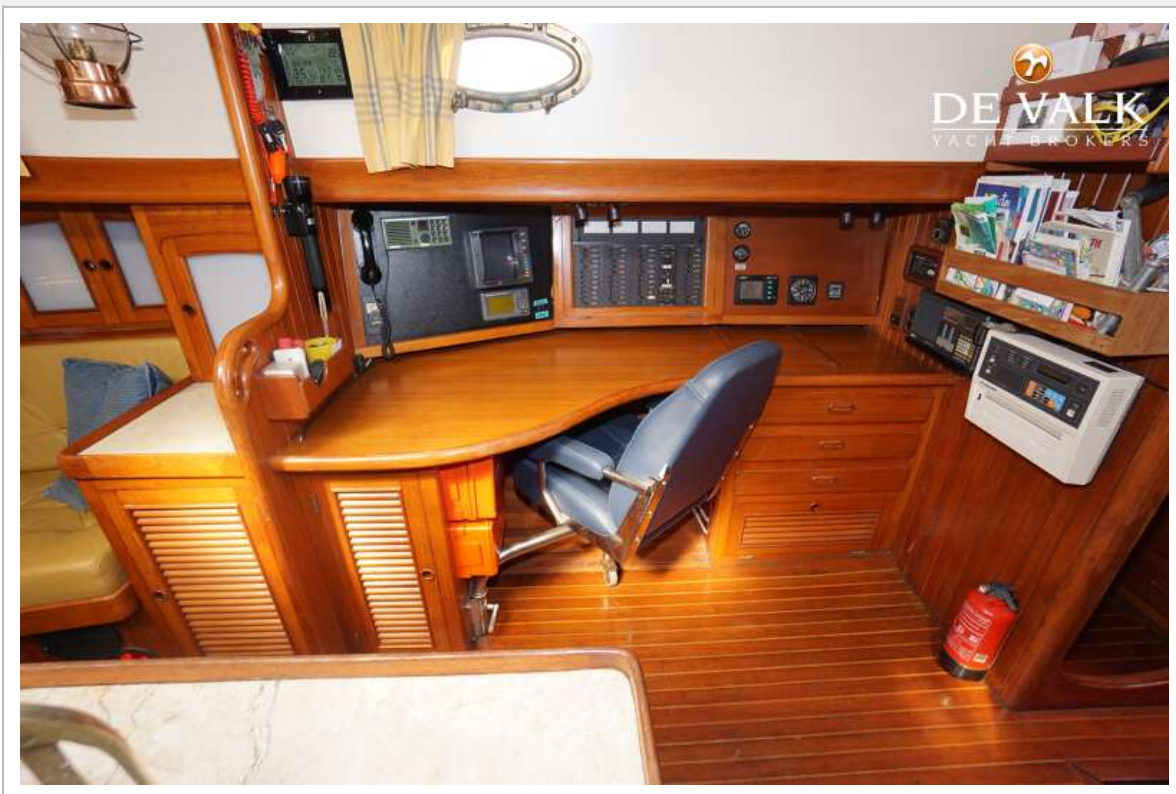


# HANS CHRISTIAN 48T



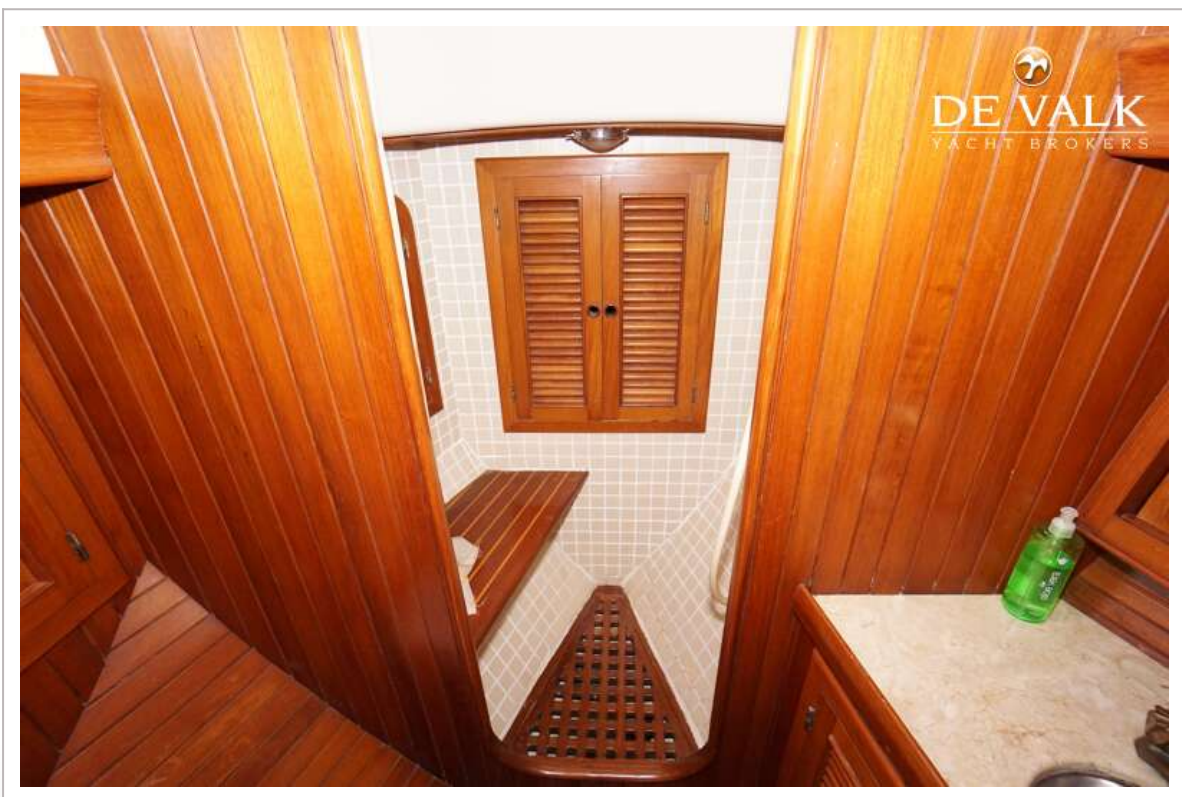


# HANS CHRISTIAN 48T

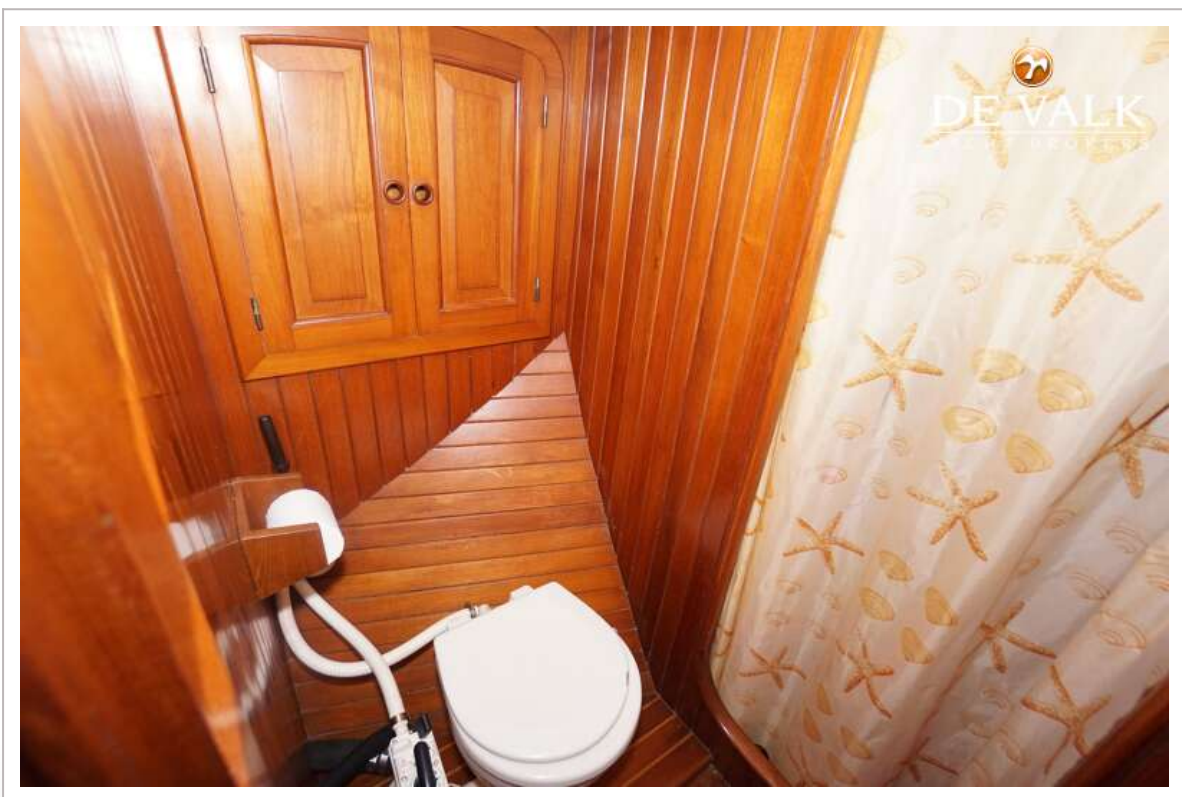




# HANS CHRISTIAN 48T

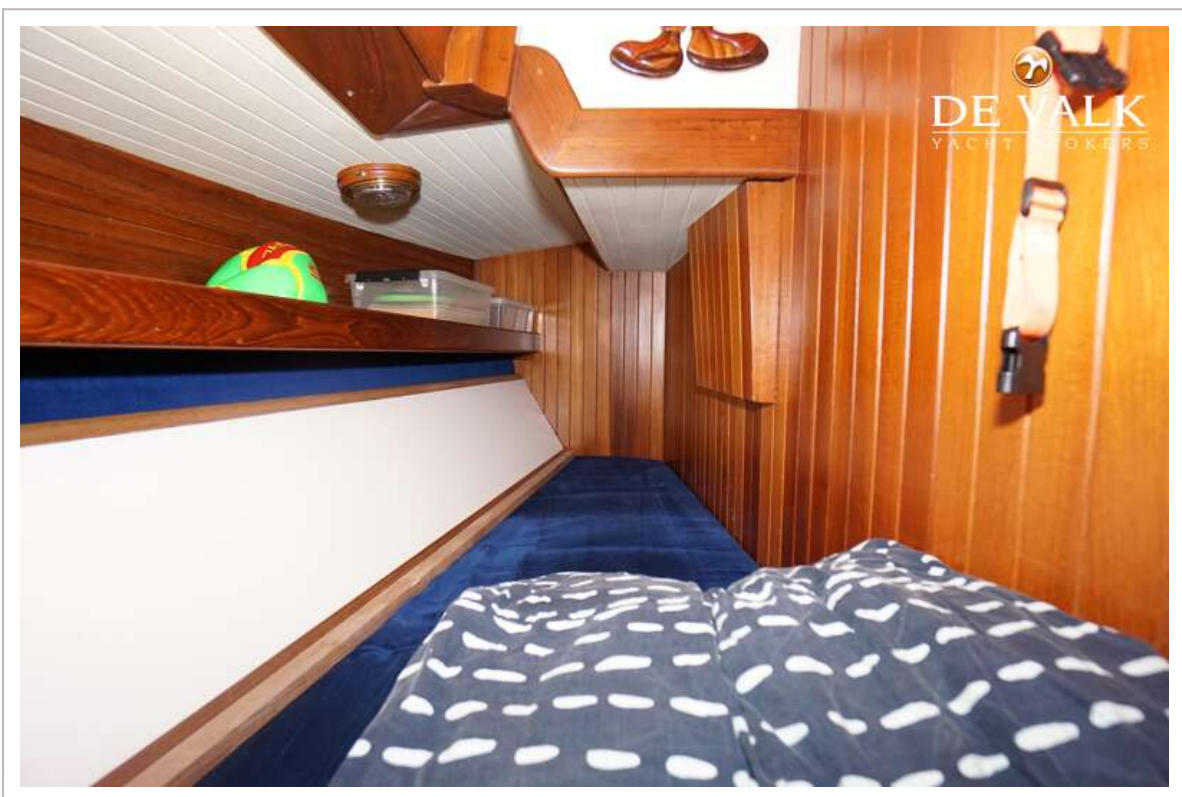


# HANS CHRISTIAN 48T





# HANS CHRISTIAN 48T





# HANS CHRISTIAN 48T

