



HALLBERG RASSY 352

BROKER'S COMMENTS

Introduced in 1978, the HR 352 was described as "A boat with future" which indeed is valid still today. Fluent lines, excellent craftsmanship, good return value. This one called "Fleur" has been pampered by her owners.

Ger Bayens

SPECIFICATIONS

Dimensions	10.54 x 3.38 x 1.68 (m)	Builder	Hallberg Rassy Varv
Built	1983	Cabins	2
Material	GRP	Berths	7
Engine(s)	1 x Vetus M417A diesel	Hp/Kw	42.00 (hp), 30.87 (kw)
Asking price	sold (VAT)	Lying	at sales office

CONTACT

Sales office	De Valk Sint Annaland B.V.	Telephone	+31 (0)166 601 000
Address	Koelhuisweg 4 4697 RM Sint Annaland NL	E-mail	sintannaland@devalk.nl

DISCLAIMER

These particulars are given in good faith as supplied but cannot be guaranteed.



GENERAL

Model	HALLBERG RASSY 352
Type	sailing yacht
LOA (m)	10,54
LWL (m)	8,70
Beam (m)	3,38
Draft (m)	1,68
Headroom (m)	1,89
Year built	1983
Builder	Hallberg Rassy Varv
Country	Sweden
Designer	Olle Enderlein
Displacement (t)	6,7
Ballast (tonnes)	cast iron 3
Hull material	GRP
Hull colour	off-white Recent paintjob
Hull shape	S-bilged
Keel type	fin keel
Superstructure material	GRP
Rubbing strake	yes
Deck material	GRP
Deck finish	anti-slip paint
Superstructure deck finish	anti-slip paint
Cockpit deck finish	teak
Window frame	aluminum
Portholes	aluminum
Fuel tank (litre)	stainless steel 150 + 80
Freshwater tank (litre)	GRP 300
Wheel steering	cable steering
More info on hull	Many layers antifouling needs some work
More info on paintwork	recent painted deck, hull. superstructure



Extra info

Teak from the decks was professionally removed and re-painted with anti-slip paint. Superstructure professionally painted.

ACCOMMODATION

Cabins	2
Berths	7
Interior	mahogany
Floor	teak and holly
Saloon	with L-shaped sette
Headroom saloon (m)	1,89
Heating	diesel ducted hot air Eberspaecher
Chart table	yes
Aft Cabin	yes
Galley	yes
Countertop	Woodprint
Sink	stainless steel
Cooker	calor gas 3 burner stainless
Oven	combined with cooker
Fridge	Isotherm + holdingplate
Hot water system	220V + engine Isothemp
Water pressure system	electrical
Owners cabin	double bed + single bed
Wardrobe	hanging
Guest cabin 1	v-bed
Wardrobe	hanging and drawers
Bathroom	shared
Toilet	yes
Toilet system	manual
Wash basin	in the bathroom
Shower	shared
Extra info	additional floor carpets



MACHINERY

No of engines	1
Make	Vetus
Type	M417A
HP	42,00
kW	30,87
Fuel	diesel
Year installed	2012
Maximum speed (kn)	7
Cruising speed (kn)	6
Consumption (l/hr)	3
Engine hours	300
Engine cooling system	freshwater heat exchanger
Drive	shaft
Engine controls	bowden cable
Gearbox	mechanical
Exhaust	watercooled
Propeller type	feathering Maxprop
Propeller blades	3
Propeller shaft material	stainless steel
Shaft lubrication	water
Manual bilge pump	yes
Electrical installation	12/220v
Start battery	1 x
Service battery	2 x
Battery charger	Victron Pallas 12v/25amp
Inverter	Mastervolt 12v/500watt
Shorepower	with cable

NAVIGATION

Compass	Sestrel
---------	---------



Depth sounder	Autohelm ST30
Log	VDO Sumlog
Windset	Advansea
VHF	Vertex VM3500E
Autopilot	Raymarine ST5000+
GPS	with Silva cockpit repeater MLR FX312
Radar/plotter	cockpit mounted Raymarine C-80
Navtex	Furuno NX-300
Electronic chart(s)	yes
AIS receiver	yes
Extra info	Hand bearing compas

EQUIPMENT

Fixed windscreen	yes
Sprayhood	yes
Cockpit cover	yes
Boarding ladder	stainless steel
Bow ladder	stainless steel
Anchor	Bruce
Anchor chain	yes
Windlass	electrical Quick
Sea railing	stainless steel
Pushpit	yes
Pulpit	yes
Life raft	container RFD
Life raft (pers)	4
Last life raft survey	valid till 4/2016
Lifebuoy	yes
Radar reflector	yes
Fenders	yes
Mooring lines	yes



Radio-cd player	yes
Clock - barometer	yes
Extra info	Outboard support Stainless antenna mast aft

RIGGING

Rigging	sloop
Brand mast	Seldén 2008
Material mast	aluminum
Spreaders	2 sets
Mainsail	Full batten, short luff UK Sails 2004
Mainsail cover	yes
Battcars	yes
Fully battened mainsail	yes
Jib	Hagoort 2008
Genoa II	Sail Select 2008
Genoa furler	Furlex S-300
Gennaker	Super Sail Store 2003
Reefing System	slabreefing
Backstay adjuster	mechanical
Boomvang	tackle
Primary sheet winch	2 x Lewmar 48AST
Halyard winches	2 x Anderssen 18ST
Reefing winch	1 x Anderssen 12ST
Winchcovers	yes
Extra info	ca 1.mtr Taller mast than standard



HALLBERG RASSY 352



HALLBERG RASSY 352



HALLBERG RASSY 352



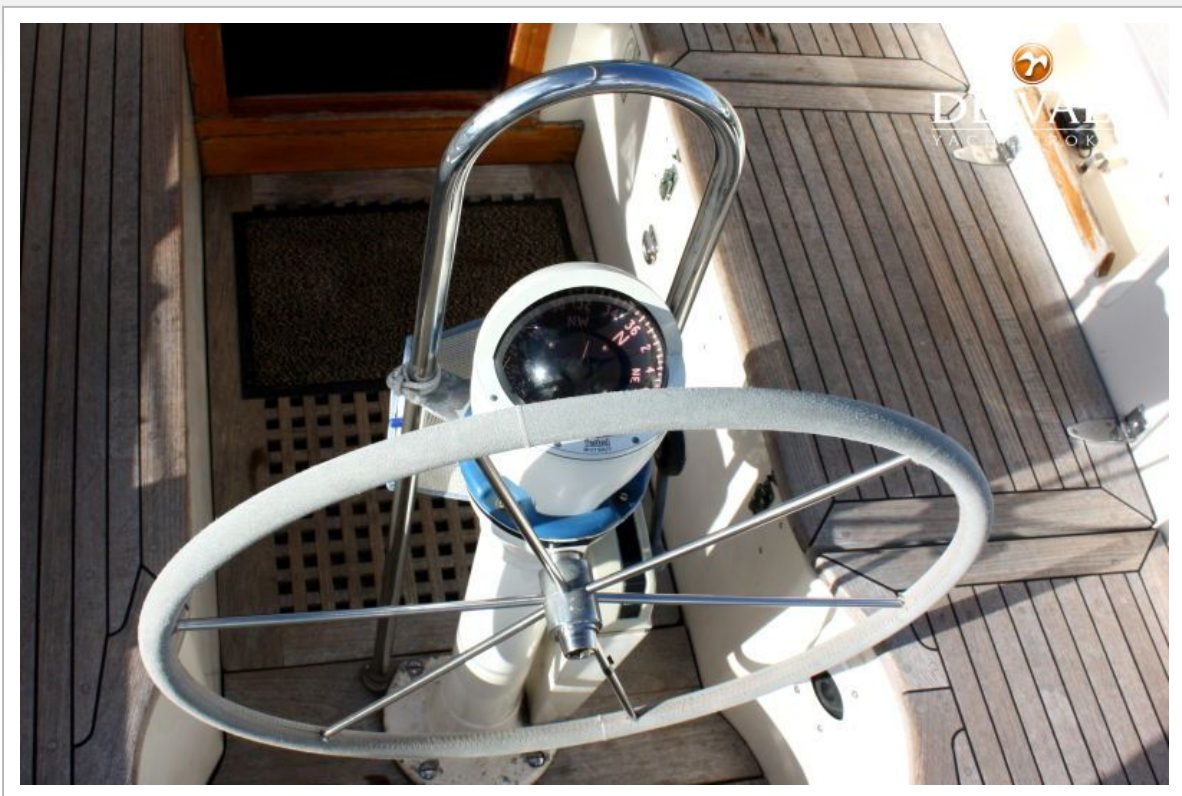
HALLBERG RASSY 352



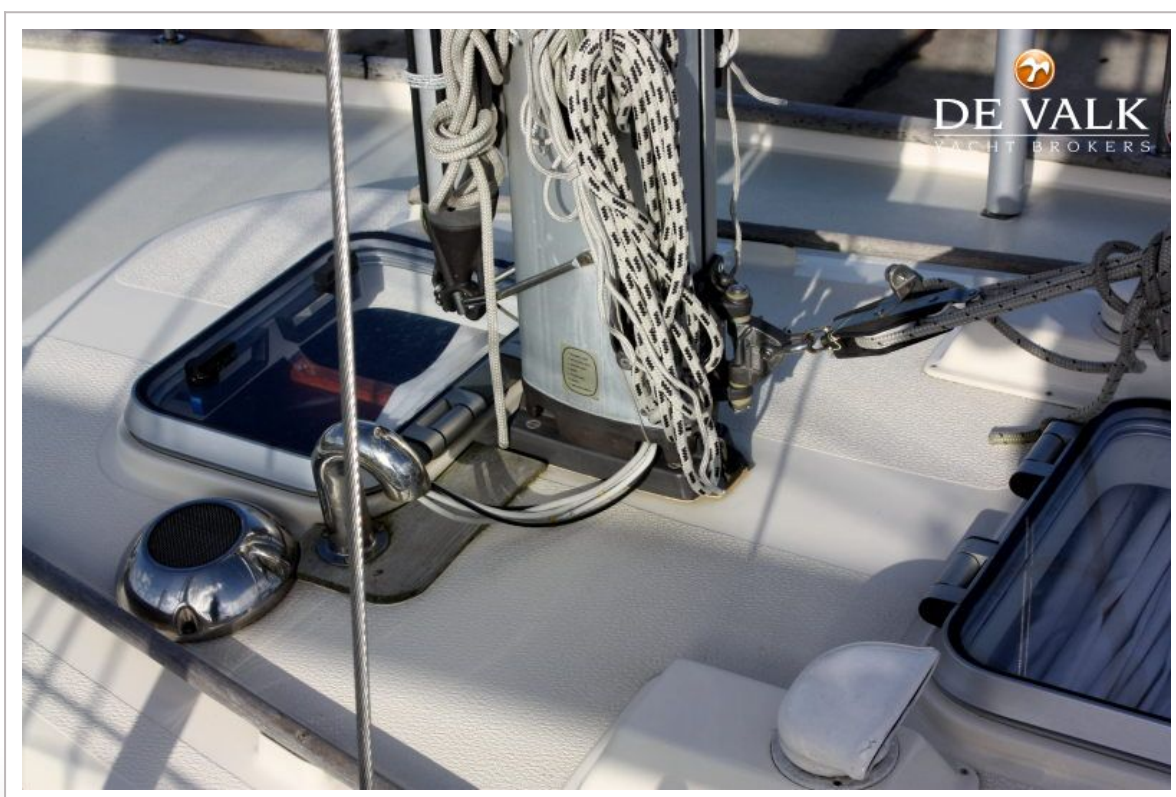
HALLBERG RASSY 352



HALLBERG RASSY 352



HALLBERG RASSY 352



HALLBERG RASSY 352



HALLBERG RASSY 352



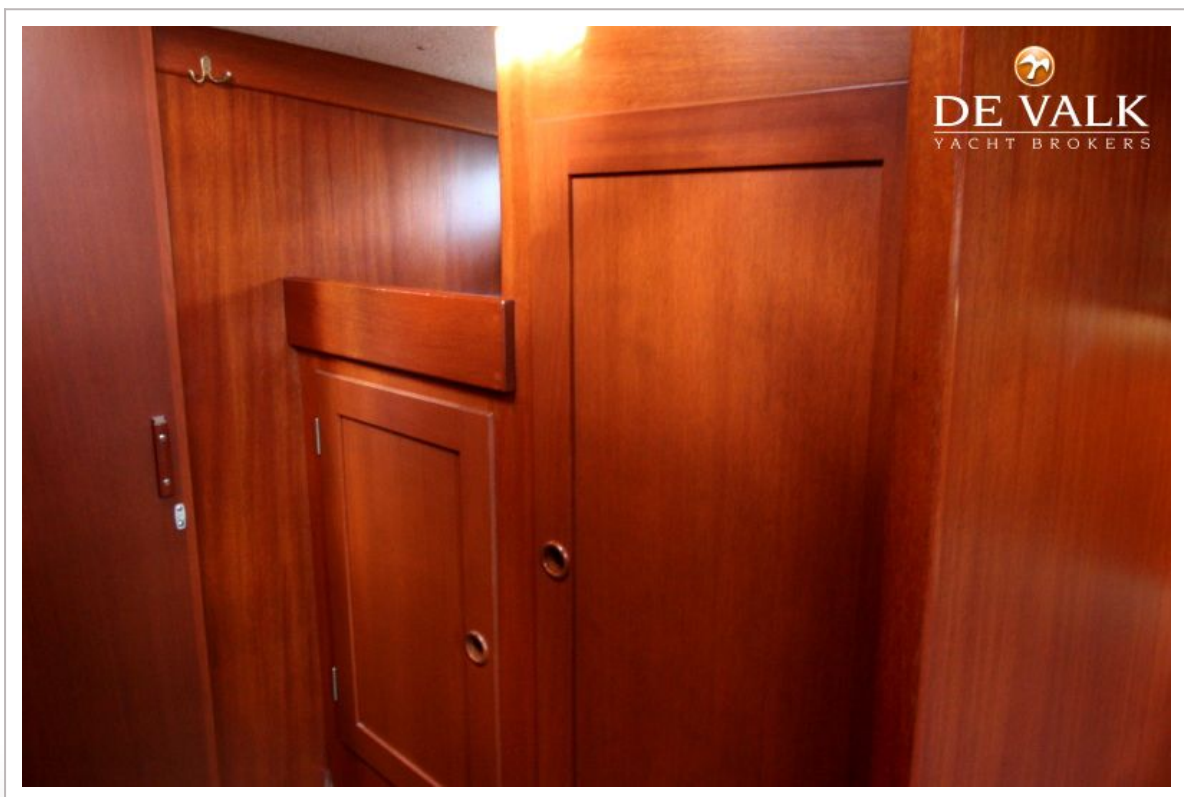
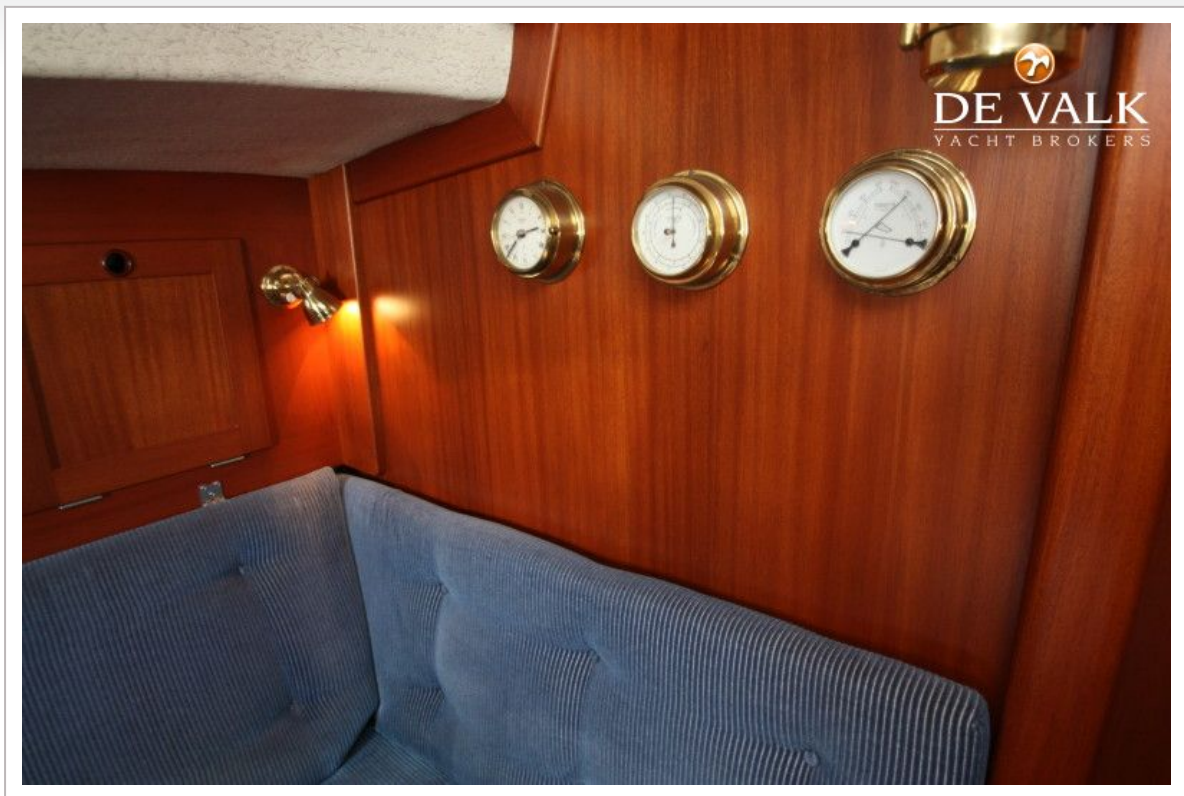
HALLBERG RASSY 352



HALLBERG RASSY 352



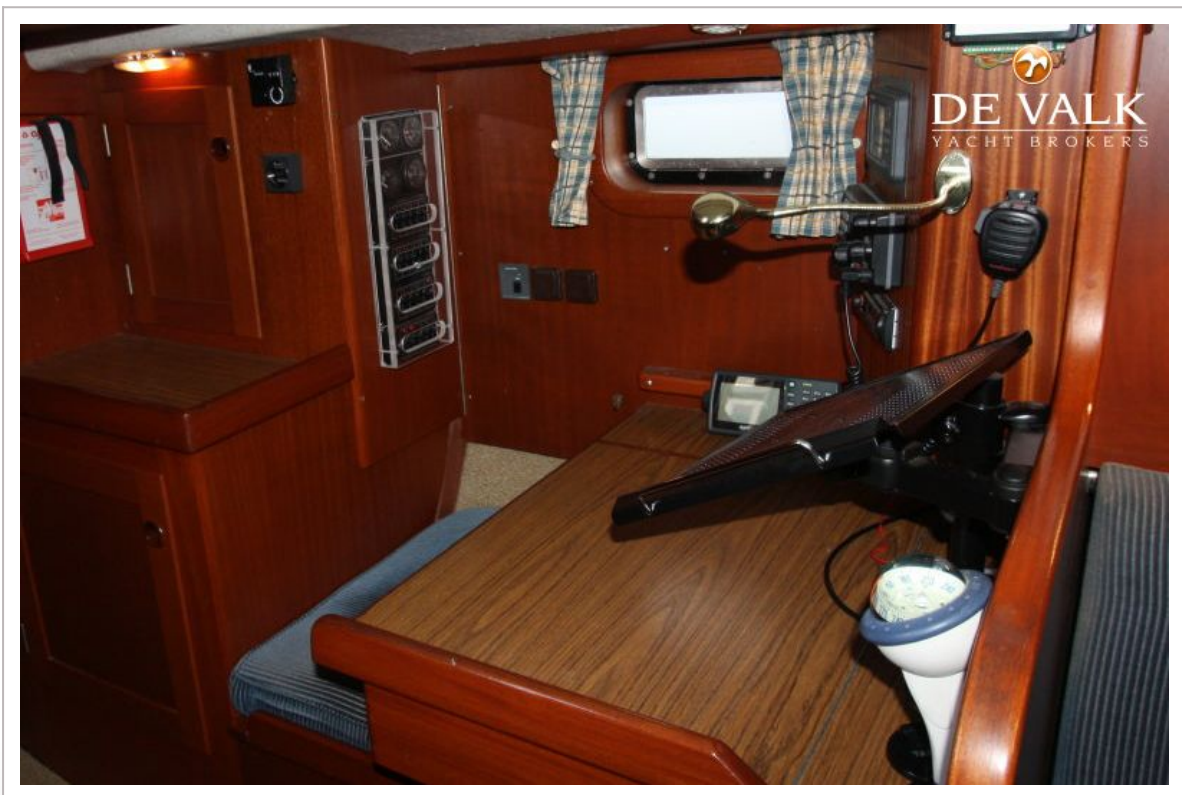
HALLBERG RASSY 352



HALLBERG RASSY 352



HALLBERG RASSY 352



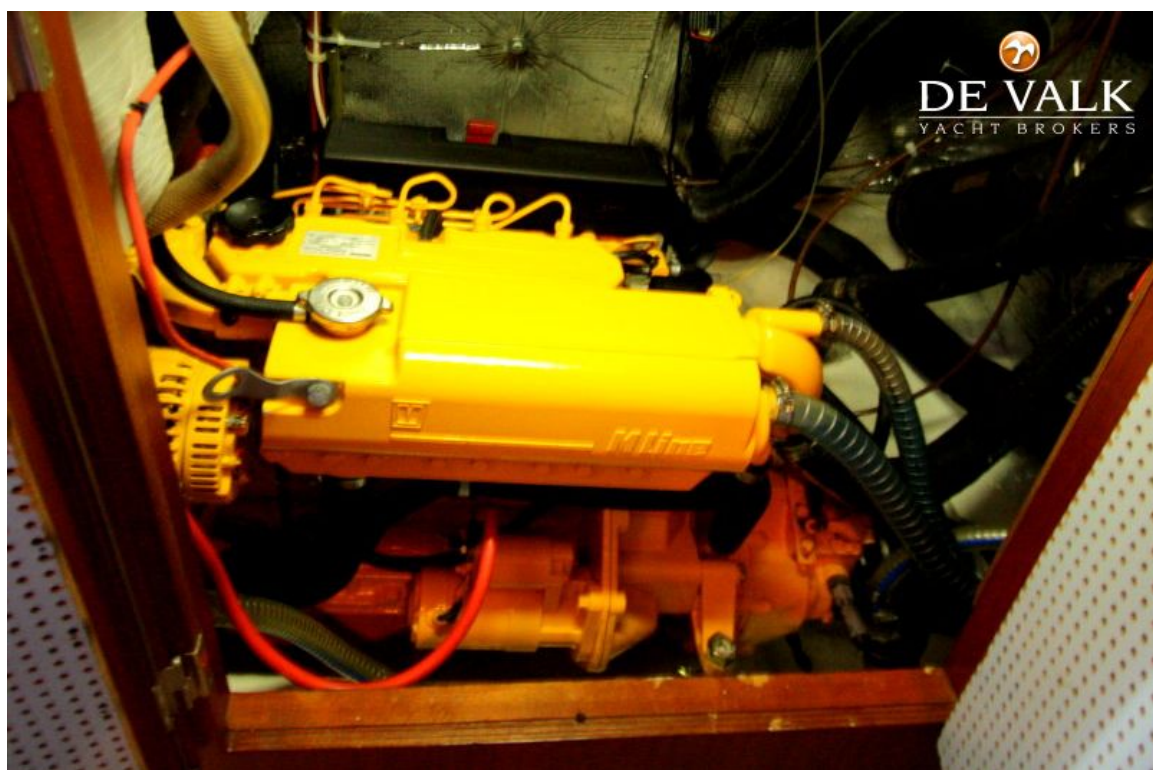
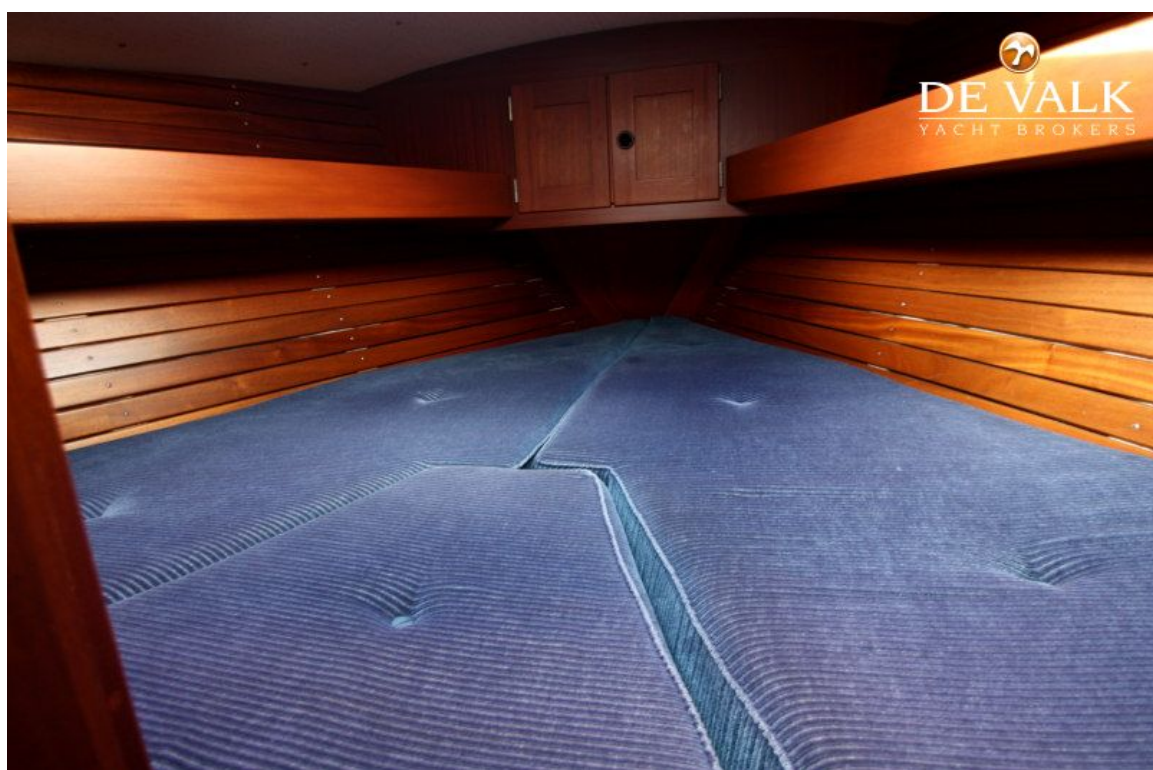
HALLBERG RASSY 352



HALLBERG RASSY 352



HALLBERG RASSY 352

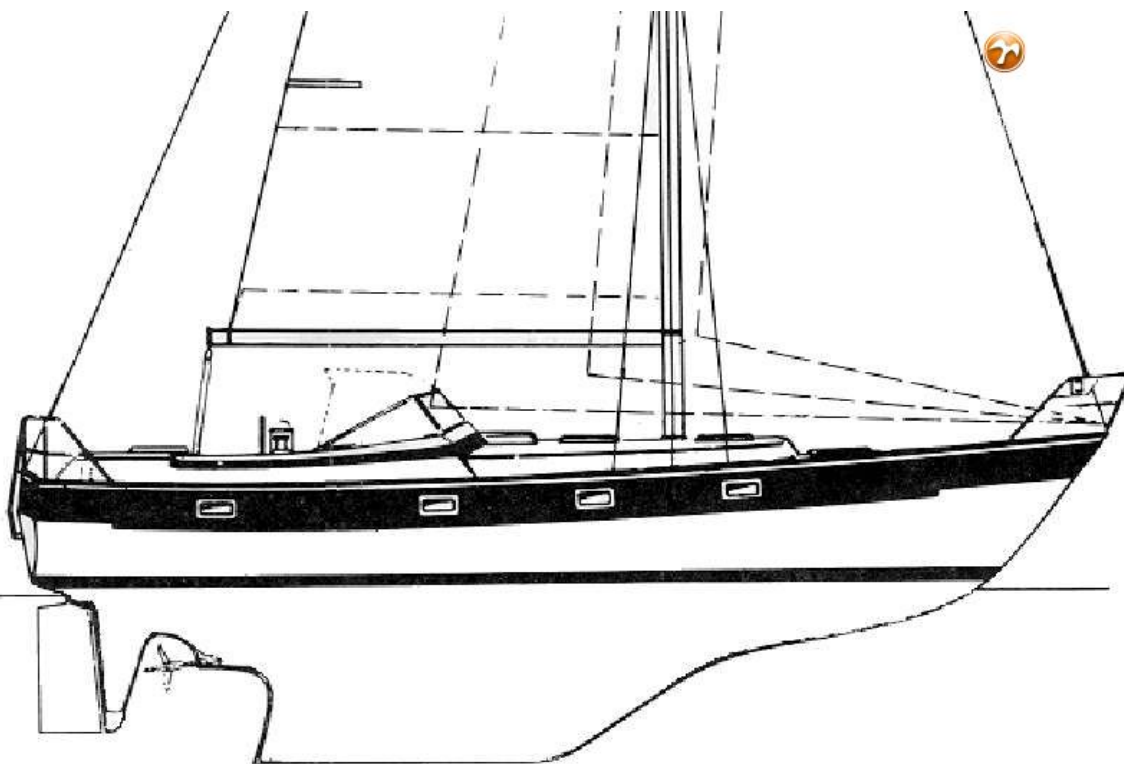
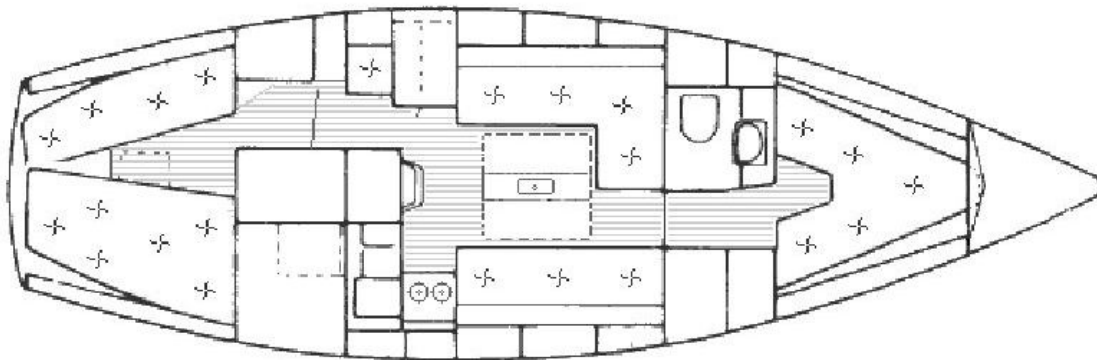


HALLBERG RASSY 352



HALLBERG RASSY 352


DE VALK
YACHT BROKERS



HALLBERG RASSY 352

