



DE VALK
YACHT BROKERS



BAVARIA 38



DE VALK
YACHT BROKERS

BROKERAGE | CHARTER | BERTHS | FINANCE | INSURANCE | YACHT MANAGEMENT

BROKER'S COMMENTS

The Bavaria 38 is a perfect family cruiser. The "Blue Motion" is among others equipped with a stoway mast, furling headsail, three cabins, sail drive, heating and bow thruster. She is very well maintained by her owner, every winter she has been checked by the yard. She is in an absolute perfect condition.

Johan Schootstra

SPECIFICATIONS

Dimensions	12.13 x 3.87 x 1.70 (m)	Builder	Bavaria Yachtbau
Built	2003	Cabins	3
Material	GRP	Berths	6
Engine(s)	1 x Volvo Penta MD 2030D diesel	Hp/Kw	29.00 (hp), 21.32 (kw)
Asking price	sold (VAT)	Lying	at sales office

CONTACT

Sales office	De Valk Hindeloopen B.V.	Telephone	+31 514 52 40 00
Address	Oosterstrand 1 8713 JS Hindeloopen NL	E-mail	hindeloopen@devalk.nl

DISCLAIMER

These particulars are given in good faith as supplied but cannot be guaranteed.



GENERAL

Model	BAVARIA 38
Type	sailing yacht
LOA (m)	12,13
LWL (m)	8,90
Beam (m)	3,87
Draft (m)	1,70
Air draft (m)	17,05
Headroom (m)	1,90
Year built	2003
Builder	Bavaria Yachtbau
Country	Germany
Designer	J&J Design
Displacement (t)	7,3
Ballast (tonnes)	cast iron 3T
Net tonnage	7t.
CE norm	A
Hull material	GRP
Hull colour	blue
Hull shape	roundbilged
Keel type	fin keel
Superstructure material	GRP
Rubbing strake	aluminum
Deck material	GRP
Deck finish	teak
Superstructure deck finish	moulded in
Cockpit deck finish	teak
Antifouling (year)	2013
Window frame	aluminium
Window material	perspex Lewmar
Fuel tank (litre)	polyethylene 150L



Level indicator (fuel tank)	yes
Freshwater tank (litre)	polyethylene 2x 150L
Blackwater tank (litre)	polyethylene 60L
Blackwater tank extraction	deck extraction
Wheel steering	mechanical
Emergency tiller	yes

ACCOMMODATION

Cabins	3
Berths	6
Interior	mahogany
Floor	teak and holly
Open cockpit	yes
Saloon	yes
Headroom saloon (m)	1,90
Heating	diesel ducted hot air Webasto
Chart table	yes
Galley	yes
Sink	stainless steel Double
Cooker	calor gas 2 burners
Oven	yes
Fridge	yes
Hot water system	220V + engine
Water pressure system	electrical
Owners cabin	v-bed
Bed length (m)	2 mtr
Wardrobe	hanging and drawers
Toilet	shared
Toilet system	manual
Wash basin	at the toilet
Shower	shared



Guest cabin 1	double bed
Bed length (m)	1,95
Wardrobe	hanging
Guest cabin 2	double bed
Bed length (m)	1,95
Wardrobe	hanging

MACHINERY

No of engines	1
Make	Volvo Penta
Type	MD 2030D
HP	29,00
kW	21,32
Fuel	diesel
Year installed	2003
Maximum speed (kn)	7
Cruising speed (kn)	6
Engine hours	480
Engine cooling system	freshwater heat exchanger
Drive	sail-drive
Engine controls	mechanical
Gearbox	mechanical
Bowthruster	electric Sidepower 75
Exhaust	watercooled
Propeller type	folding
Propeller blades	3
Manual bilge pump	yes
Electric bilge pump	yes
Electrical installation	12 & 220 volt
Batteries	yes
Start battery	12V - 55Ah (20h)



Service battery	Exide Heavy Professional 135Ah 1000A
Bowthruster battery	2x Exide 50Ah
Battery charger	Mastervolt AC master 12/35
Inverter	Victron Phoenix inverter 12V-220
Shorepower	with cable

NAVIGATION

Compass	Plastimo Olympic 135
Depth sounder	Raymarine Tridata ST60
Log	Raymarine Tridata ST60
Windset	Raymarine ST60 Wind
Repeater	Raymarine ST60 Multi
VHF	with external connection Raymarine Ray 240E (new in 2009)
Autopilot	Raymarine ST4000+
Rudder angle indicator	Raymarine ST4000+
Plotter	At chart table Raymarine Chartplotter RC320
Radar/GPS/plotter	Raymarine C80 (new in 2009)
Extra info	yes

EQUIPMENT

Sprayhood	New in 2011
Bimini	yes
Cockpit table	yes
Bathing platform	yes
Boarding ladder	stainless steel
Deck shower	yes
Anchor	CQR Plough
Anchor chain	yes
Sea railing	wire
Grab rail (superstructure)	stainless steel
Pushpit	yes



Pulpit	yes
Life raft (pers)	Avon Ocean 6 pers. (needs inspection Feb. 2015)
Lifejackets	6x Seago 175
Safety lines on deck	yes
Radar reflector	active radar reflector Sea - Me
Fenders	yes
Mooring lines	yes
TV	2x
TV receiver	2x
Radio-cd player	VDO
Speakers in salon	yes
Clock - barometer	yes
Fire extinguisher	yes

RIGGING

Rigging	fractional
Brand mast	Seldén
Material mast	aluminium
Spreaders	2
Mainsail	Vertical battened, 32,10 m2 (2003)
Stoway mast	yes
Genoa	45,80 m2 (2010)
Genoa furler	yes
Genoa cover	yes
Reefing System	main in-mast furling
Backstay adjuster	tackle
Boomvang	gasspring
Primary sheet winch	2x Harken 44 - 2 speed
Secondary sheet winch	2x Harken 40 - 2 speed
Extra info	saildrive cuff replaced in 2013



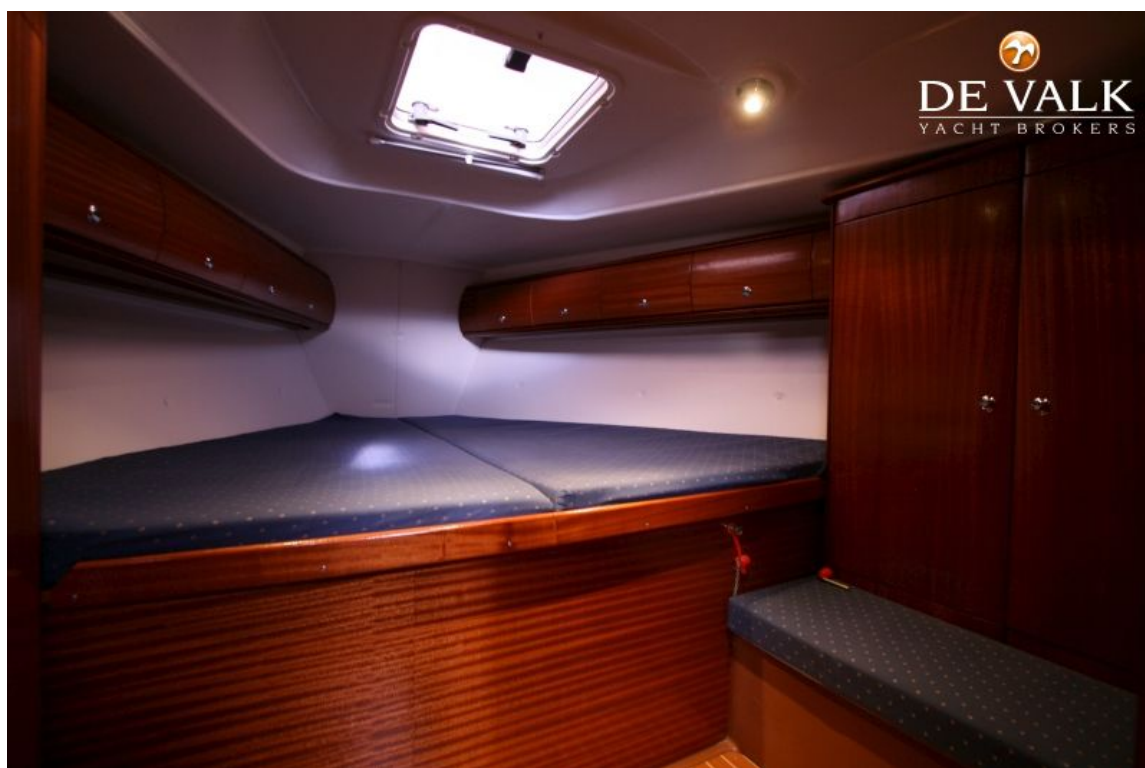
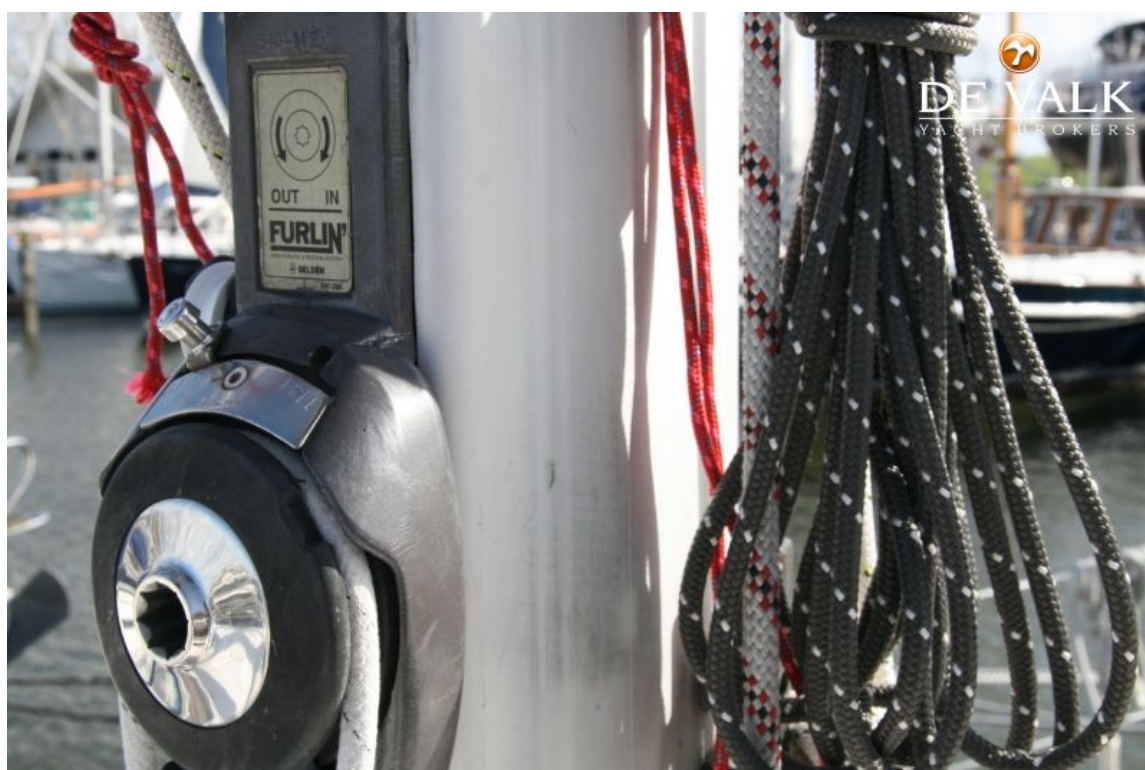




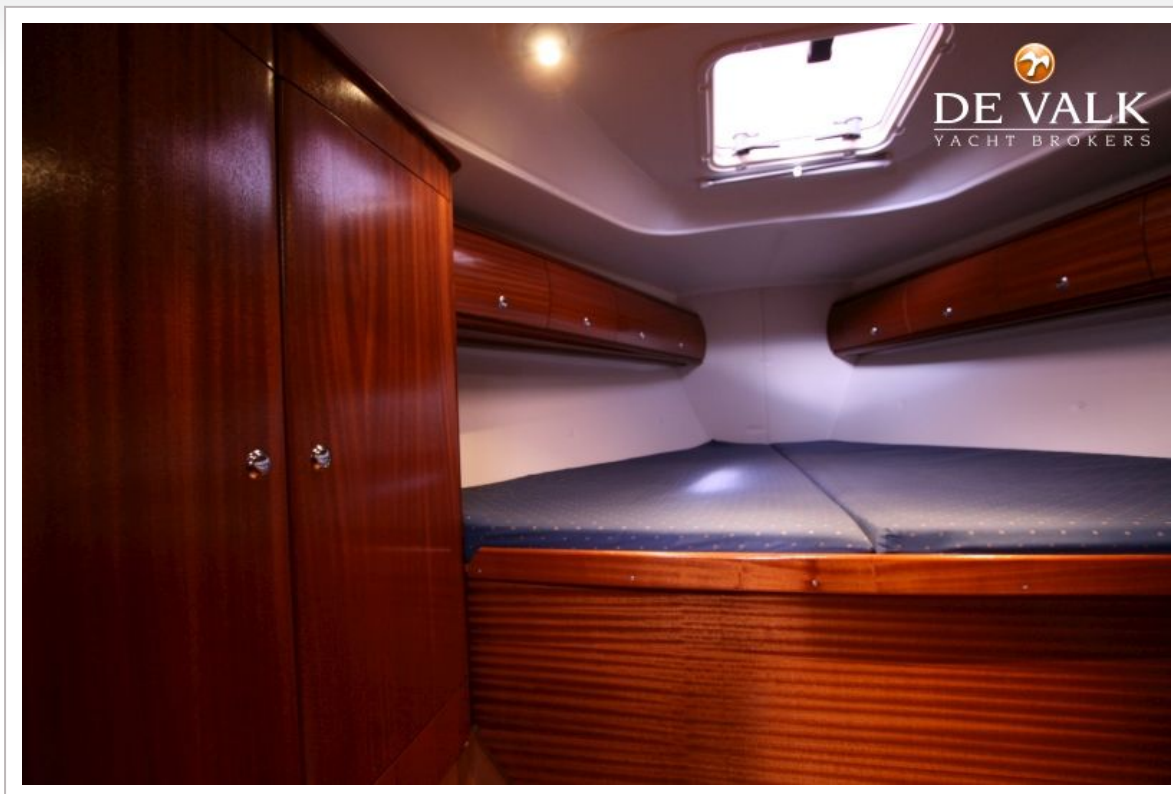




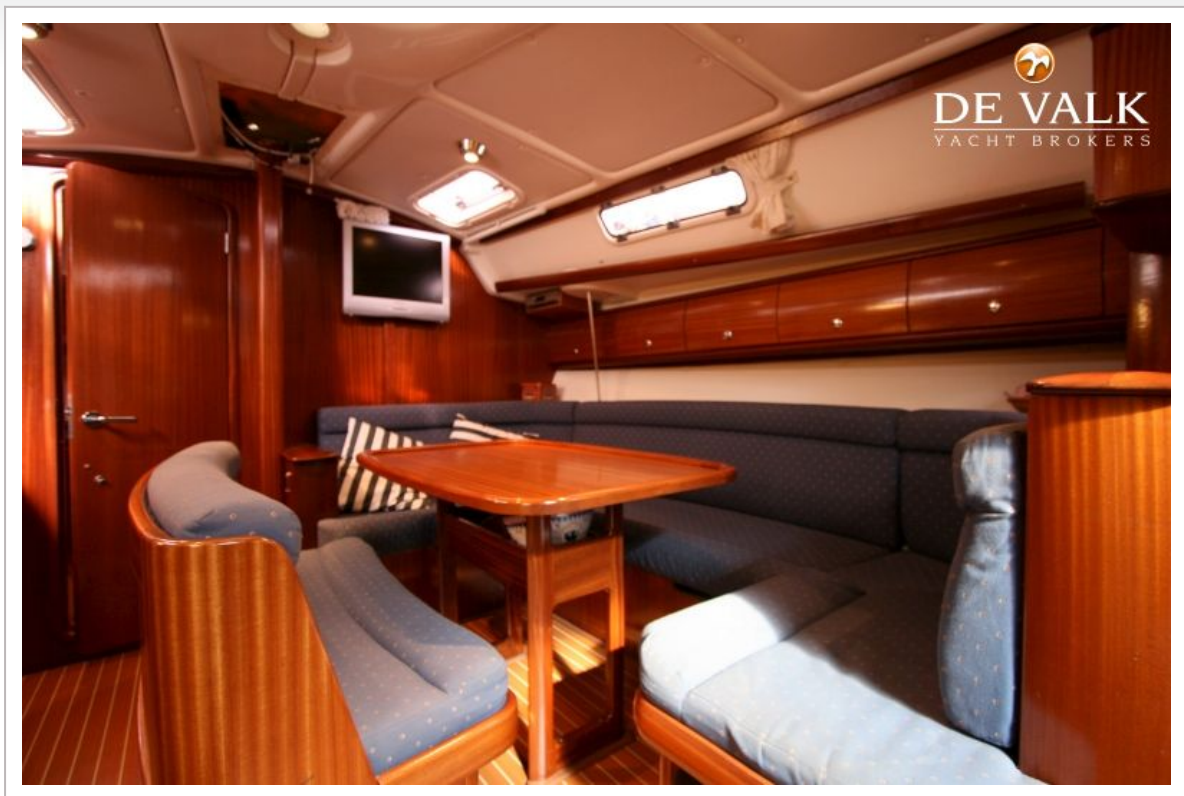




BAVARIA 38



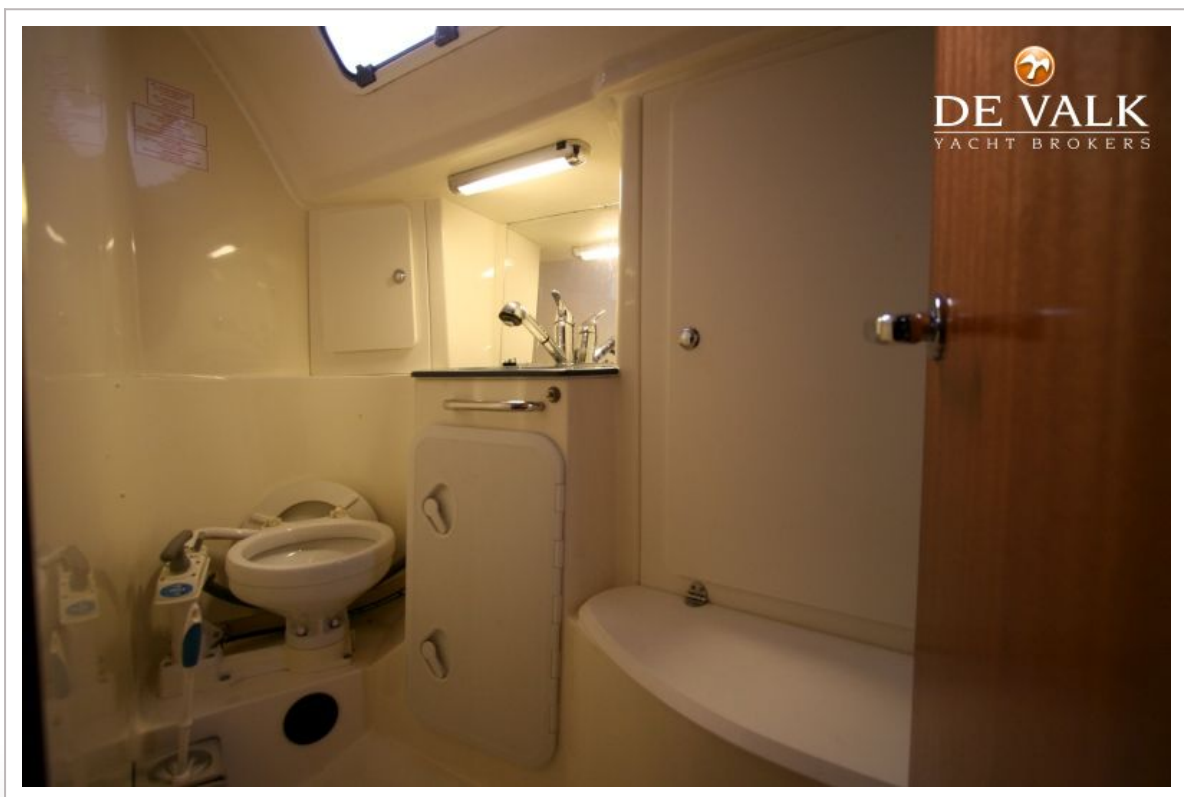
BAVARIA 38





BAVARIA 38





BAVARIA 38



