



DE VALK
YACHT BROKERS



BAVARIA 44



DE VALK
YACHT BROKERS

BROKERAGE | CHARTER | BERTHS | FINANCE | INSURANCE | YACHT MANAGEMENT

BROKER'S COMMENTS

The Bavaria 44-4 is an excellent performing yacht with a very smart interior lay out from the hand of J & J naval architects. The 3-spreader Selden mast, good sail wardrobe gives that little more sailing fun, together with the ease of a stow-away mainsail and furling headsails. Her elegant dark blue hull, neat (later) laid teak deck, a cockpit with twin wheels and the varnished cockpit table give this lady standing. Inside she offers a large lounge, spacious owner's stateroom in the bow section, two heads and furthermore three guest cabins offers good and private space.

Ger Bayens

SPECIFICATIONS

Dimensions	13.95 x 4.45 x 1.65 (m)	Builder	Bavaria Yachts GmbH
Built	2004	Cabins	4
Material	GRP	Berths	8
Engine(s)	1 x Volvo Penta D2-55 B diesel	Hp/Kw	55.00 (hp), 40.42 (kw)
Asking price	sold (VAT)	Lying	at sales office

CONTACT

Sales office	De Valk Sint Annaland B.V.	Telephone	+31 (0)166 601 000
Address	Koelhuisweg 4 4697 RM Sint Annaland NL	E-mail	sintannaland@devalk.nl

DISCLAIMER

These particulars are given in good faith as supplied but cannot be guaranteed.



GENERAL

Model	BAVARIA 44
Type	sailing yacht
LOA (m)	13,95
LWL (m)	11,45
Beam (m)	4,45
Draft (m)	1,65
Air draft (m)	18,40
Headroom (m)	1,92
Year built	2004
Builder	Bavaria Yachts GmbH
Country	Germany
Designer	J & J Design
Displacement (t)	9,6
CE norm	A
Hull material	GRP
Hull colour	blue
Hull shape	round-bilged
Keel type	fin keel with bulb
Superstructure material	GRP
Rubbing strake	stainless steel
Deck material	GRP
Deck finish	teak
Superstructure deck finish	teak
Cockpit deck finish	teak
Antifouling (year)	2016
Dorades	yes
Window frame	aluminium
Window material	polycarbonate
Deckhatch	with blinds 7x
Portholes	aluminium 12x



Fuel tank (litre)	polyethylene 210 in 1 tank
Level indicator (fuel tank)	yes
Freshwater tank (litre)	polyethylene 360 in 2 tanks
Level indicator (freshwater)	yes
Blackwater tank (litre)	polyethylene 80 in 1 tank
Wheel steering	rack & pinion 2x
Emergency tiller	yes
More info on paintwork	Hull Awlgrippied 2012/ 2x spot-repair 2016

ACCOMMODATION

Cabins	4
Berths	8
Interior	mahogany
Layout	Saloon, 4-cabins, two heads
Floor	teak and holly
Saloon	yes
Headroom saloon (m)	1,92
Heating	diesel ducted hot air Webasto
Chart table	yes
Aft Cabin	2X
Dining room	yes
Dinette	yes
Galley	yes
Countertop	plastic
Sink	stainless steel
Cooker	calor gas
Oven	yes
Fridge	Danfoss 12/V
Hot water system	220V + engine
Water pressure system	yes
Owners cabin	double bed



Bed length (m)	2,00 x 1,60
Wardrobe	hanging and shelves
Bathroom	shared
Toilet	shared
Toilet system	manual
Wash basin	at the toilet
Shower	shared
Guest cabin 1	bunk bed
Bed length (m)	2,00 x 0,70 / 0,60
Wardrobe	hanging and shelves
Bathroom	shared
Toilet	shared
Toilet system	manual
Wash basin	at the toilet
Shower	shared
Guest cabin 2	double bed
Bed length (m)	2,00 x 1,40
Wardrobe	drawers and shelves
Bathroom	shared
Toilet	shared
Toilet system	manual
Wash basin	at the toilet
Guest cabin 3	double bed
Bed length (m)	2,00 x 1,40
Wardrobe	drawers and shelves
Bathroom	yes
Toilet	shared
Toilet system	manual
Wash basin	at the toilet
Extra info	improved mattresses



MACHINERY

No of engines	1
Make	Volvo Penta
Type	D2-55 B
HP	55,00
kW	40,42
Fuel	diesel
Maximum speed (kn)	8
Cruising speed (kn)	7
Consumption (l/hr)	4,5
Engine cooling system	freshwater heat exchanger
Drive	sail-drive
Saildrive seal	2004
Engine controls	mechanical
Gearbox	mechanical
Bowthruster	electric Sidepower SE 80/185T (6 Hp) engine changed in 2010
Propeller type	feathering Maxprop
Propeller blades	3
Manual bilge pump	yes
Electric bilge pump	yes
Electrical installation	12/230V
Batteries	4x
Start battery	1x 53 AH
Service battery	2x 135 AH
Bowthruster battery	1x
Battery monitor	With shore current limiter Victron
Battery charger	Mask VO
Battery charger/inverter	Victron Phoenix Multi Plus 12/2500/120
Shorepower	with cable
Insulation transformer	yes
Extra info	Engine hour counter is not working (estimated hours 1000)



Extra info

Saildrive seal older than 7 years

NAVIGATION

Compass

2x Plastimo 135 Olympic

Electric compass

in Autopilot Raymarine

Depth sounder

Raymarine ST 60+Tridata

Depth sounder/log

Raymarine ST 60+ Tridata

Windset

Raymarine ST 60+

VHF

+ extra hand set at steering position Shipmate RS 8300

Autopilot

Raymarine ST 6001 Smart

Rudder angle indicator

yes

Radar/GPS/plotter

Raymarine C70

Electronis chart(s)

need update Navionics

EQUIPMENT

Sprayhood

yes

Cockpit cushions

yes

Cockpit table

yes

Bathing platform

yes

Boarding ladder

stainless steel

Transom door

yes

Anchor

CQR Plough Stainless Steel

Anchor chain

yes

Anchor 2

Fortress

Windlass

Lofrance 1200

Capstan

yes

Outboard support

yes

Sea railing

wire

Railing side opening gates

2x

Pushpit

yes

Pulpit

yes



Lifebuoy	yes
Danbuoy	yes
Fenders	yes
Mooring lines	yes
Radio-cd player	JVC
Cockpit speakers	yes
Speakers in salon	yes
Clock - barometer	Cresta

RIGGING

Rigging	sloop
Standing rigging	wire intermittent
Brand mast	Seldén
Material mast	aluminium
Spreaders	3 sets
Mainsail	1x Elvstöm Main vertical battens '07 ,1x Van de Werf Main '10
Stoway mast	yes
Genoa	Dacron Genua II Van de Werf, 2010
Genoa I	Furling with UV protection Elvström
Genoa II	Technora Van de Werf, 2010
Cutter furler	Furlex 300S
Gennaker	Small; 90 m2 with endless rope furler
Reefing System	main in-mast furling
Backstay adjuster	mechanical Lewmar
Boomvang	mechanical and tackle Rodkicker
Primary sheet winch	2x Harken 48.2 ST
Halyard winches	2x Harken 40.2 ST
Reefing winch	Selden
Spi-pole	aluminium
Extra info	Jammers Spinlock



BAVARIA 44





BAVARIA 44

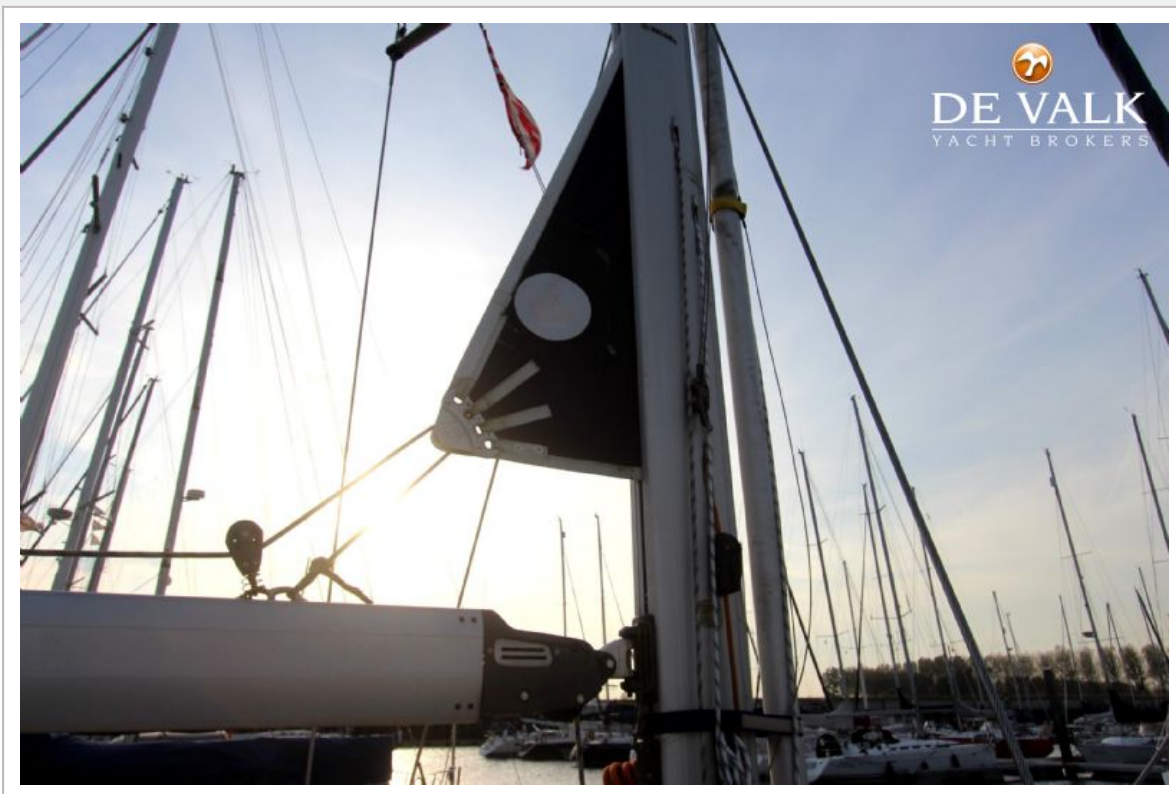


BAVARIA 44



BAVARIA 44





BAVARIA 44



BAVARIA 44



BAVARIA 44



BAVARIA 44



BAVARIA 44



BAVARIA 44



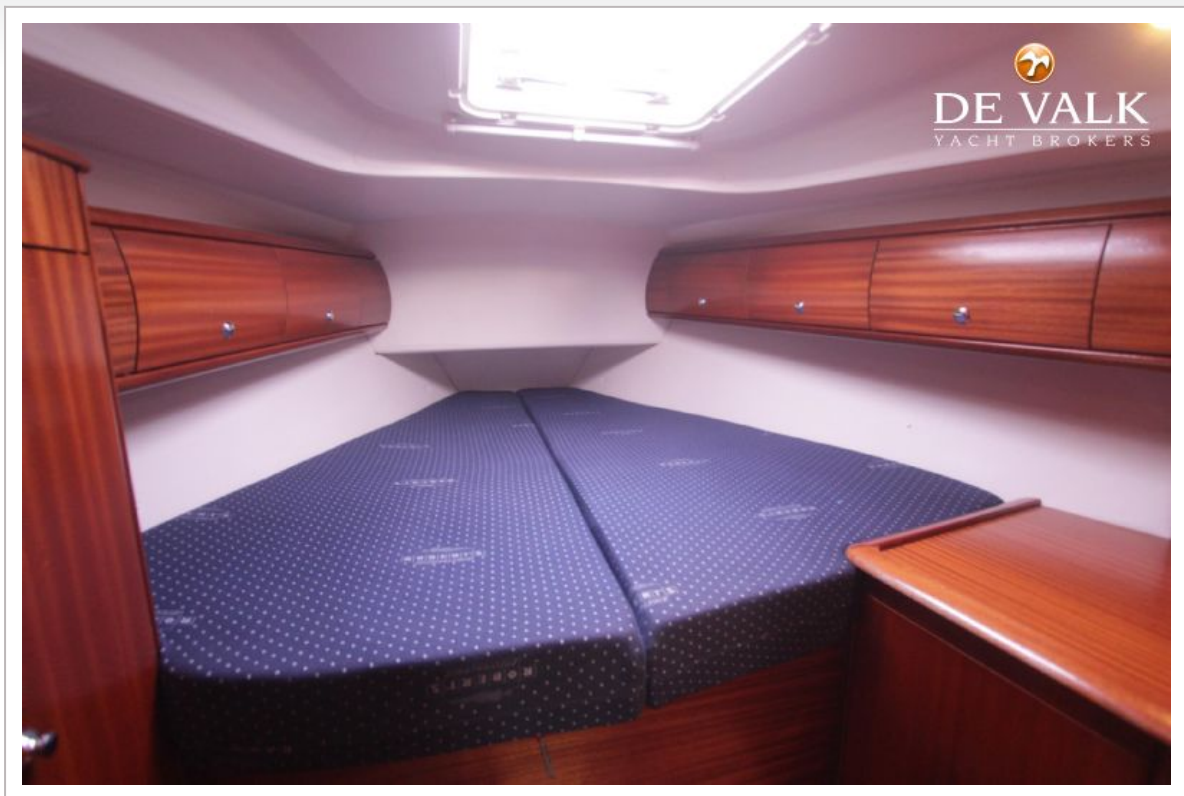
BAVARIA 44



BAVARIA 44



BAVARIA 44



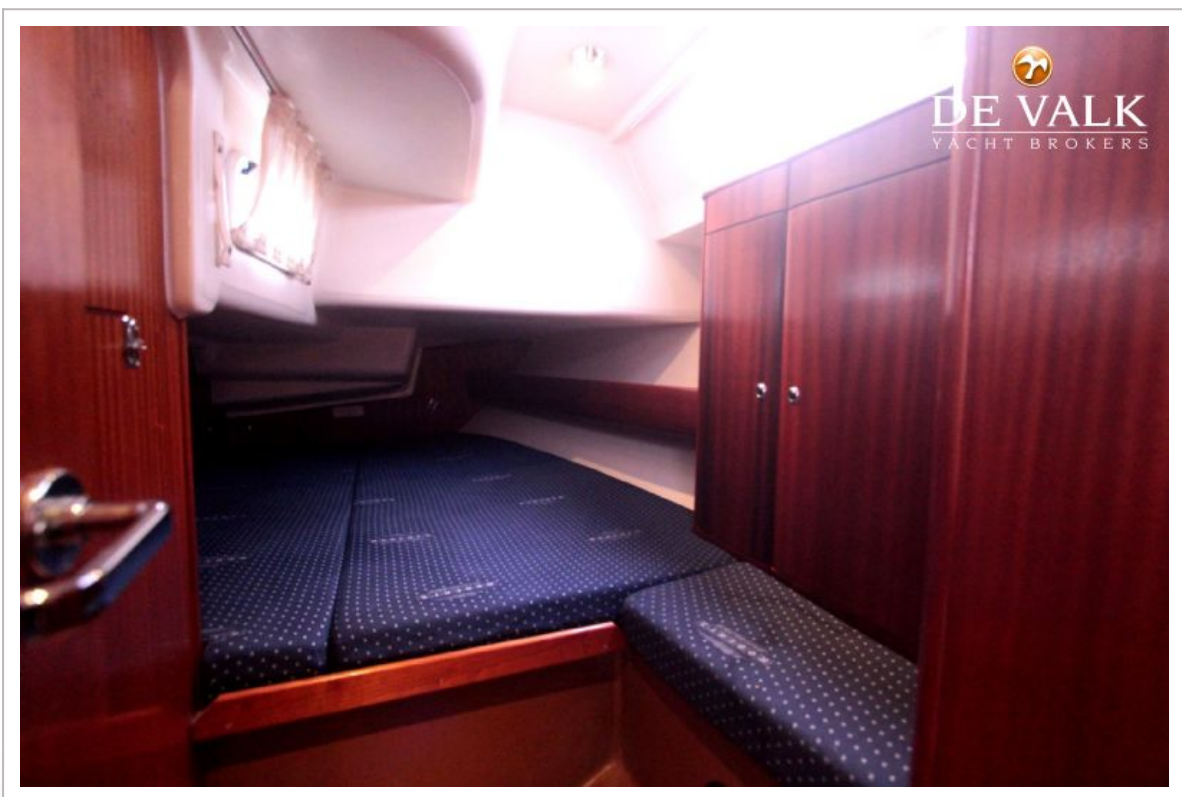
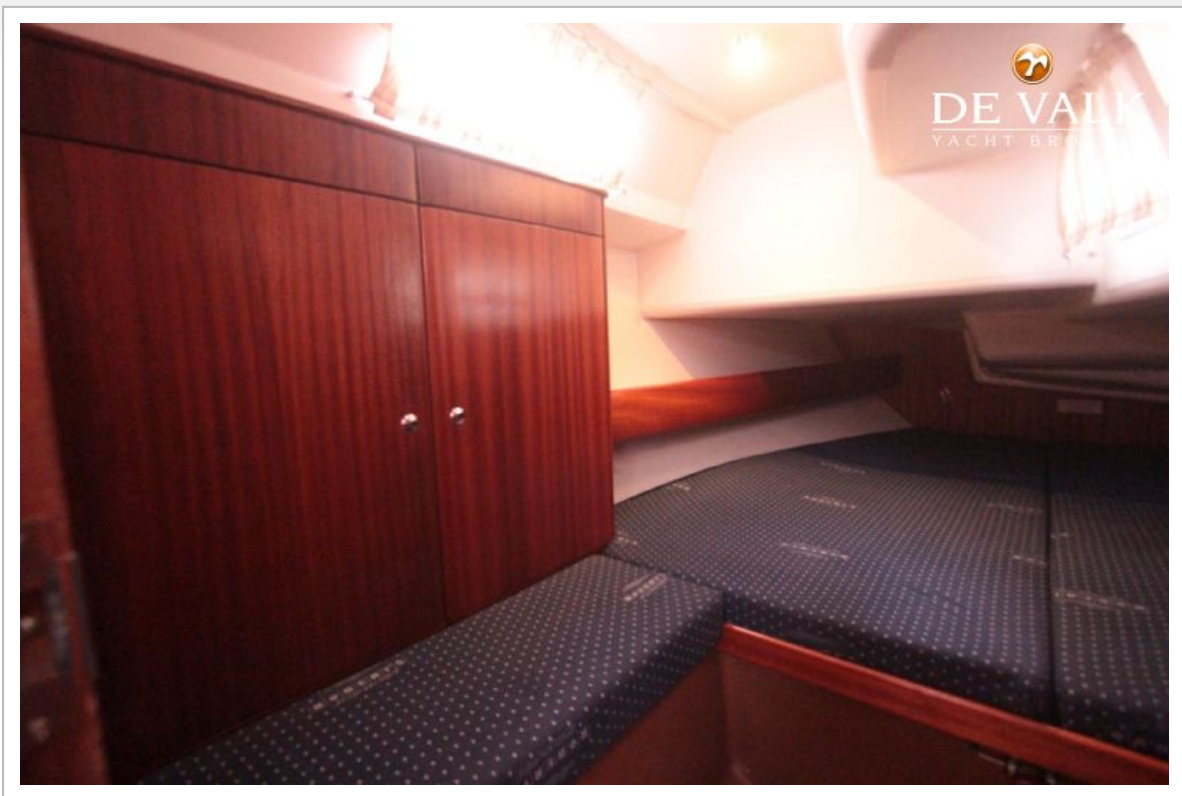
BAVARIA 44



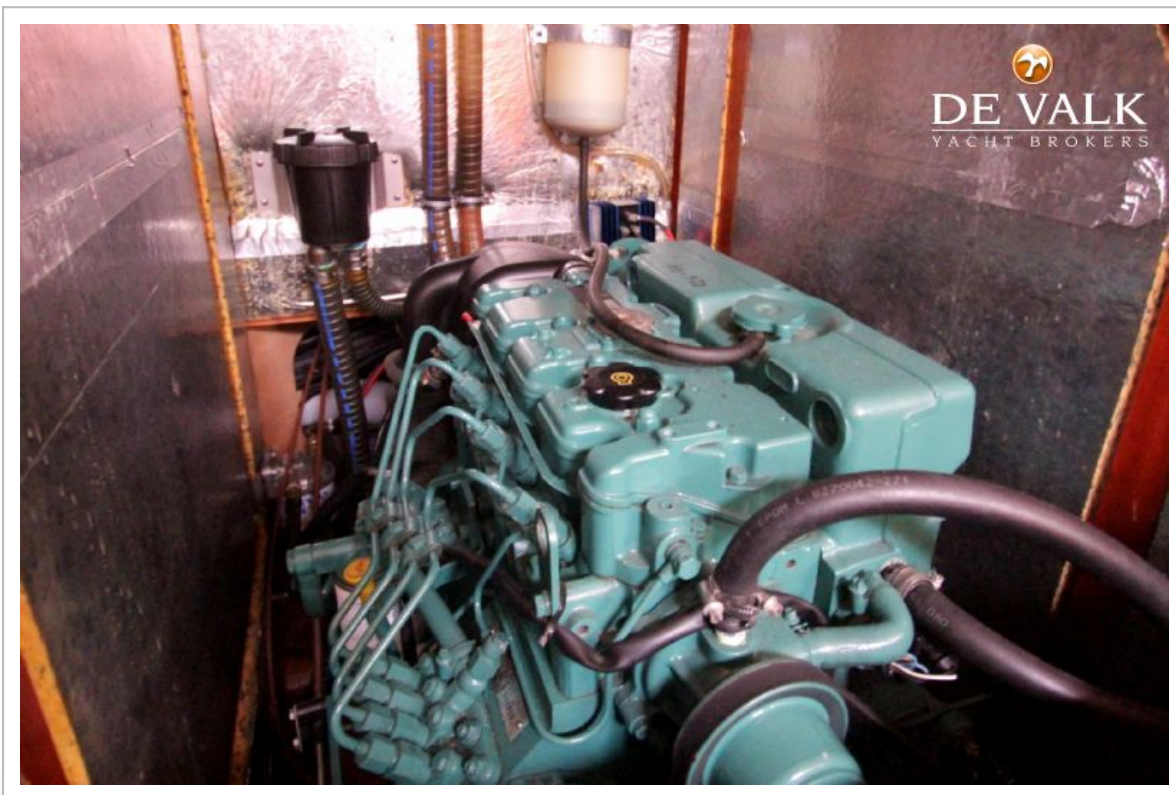
BAVARIA 44



BAVARIA 44



BAVARIA 44



BAVARIA 44



