



DE VALK
YACHT BROKERS



OCEAN CRUISER 49



DE VALK
YACHT BROKERS

BROKER'S COMMENTS

OFFERS INVITED Fast, safe and easy cruising yacht for short handed sailing in comfort and style. Designed by de Ridder, built as a light displacement in strong epoxy composites. She comes well equipped for fast offshore cruising. Owner ordered this yacht when he was 65+ and easily sailed her together with his wife for many years with great fun.

Ger Bayens

SPECIFICATIONS

Dimensions	14.85 x 4.20 x 2.60 (m)	Builder	Johan Vels Jachtbouw/Enkhuizen
Built	1997	Cabins	2
Material	Composite	Berths	8
Engine(s)	1 x Yanmar 4JH3 Diesel	Hp/Kw	50.00 (hp), 36.75 (kw)
Asking price	sold (VAT)	Lying	at sales office

CONTACT

Sales office	De Valk Sint Annaland B.V.	Telephone	+31 (0)166 601 000
Address	Koelhuisweg 4 4697 RM Sint Annaland NL	E-mail	sintannaland@devalk.nl

DISCLAIMER

These particulars are given in good faith as supplied but cannot be guaranteed.



GENERAL

Model	OCEAN CRUISER 49
Type	sailing yacht
LOA (m)	14,85
LWL (m)	13,00
Beam (m)	4,20
Draft (m)	2,60
Headroom (m)	1,92
Year built	1997
Builder	Johan Vels Jachtbouw/Enkhuizen
Country	The Netherlands
Designer	De Ridder
Displacement (t)	9,5
Ballast (tonnes)	3,57
Hull material	composite
Hull colour	white
Hull shape	round-bilged
Keel type	fin keel
Superstructure material	epoxy and foam core
Superstructure (mm)	yes
Deck material	composite
Deck finish	anti-slip paint
Superstructure deck finish	paint
Cockpit deck finish	anti-slip paint
Antifouling (year)	yes
Window frame	aluminium
Window material	tempered glass
Deckhatch	Gebo
Portholes	aluminium
Radar arch	yes
Fuel tank (litre)	300



Level indicator (fuel tank)	Tanktender
Freshwater tank (litre)	325
Blackwater tank (litre)	Not connected
Wheel steering	mechanical Edson

ACCOMMODATION

Cabins	2
Berths	8
Crew cabin	yes
Crew berths	1
Interior	White panels with cherry parts
Floor	anti-slip
Saloon	yes
Chart table	yes
Aft Cabin	yes
Dinette	yes
Galley	yes
Countertop	plastic
Sink	stainless steel
Cooker	calor gas Force 10
Oven	Force 10
Fridge	Isotherm
Freezer	Isotherm
Hot water system	220V + engine
Water pressure system	electrical
Owners cabin	double bed
Bed length (m)	2 Mtr
Wardrobe	yes
Bathroom	en suite
Toilet	en suite
Toilet system	manual



Wash basin	at the toilet
Shower	en suite
Guest cabin 1	double bed
Bed length (m)	2 Mtr
Wardrobe	yes
Bathroom	shared
Toilet	shared
Toilet system	manual
Wash basin	at the toilet
Shower	shared
Crew cabin(s)	yes
Extra info	Port Side aft is a technical area now can be turned into a third cabin

MACHINERY

No of engines	1
Make	Yanmar
Type	4JH3
HP	50,00
kW	36,75
Fuel	diesel
Year installed	1998
Maximum speed (kn)	8
Cruising speed (kn)	7
Consumption (l/hr)	4
Engine hours	1932
Engine cooling system	freshwater heat exchanger
Drive	shaft
Engine controls	bowden cable
Gearbox	mechanical
Gearbox	mechanical



OCEAN CRUISER 49

Exhaust	watercooled
Propeller type	feathering
Propeller blades	2
Propeller shaft material	stainless steel
Manual bilge pump	yes
Electric bilge pump	yes
Electrical installation	12/24/220v
Batteries	yes
Start battery	yes
Service battery	yes
Battery monitor	yes
Battery charger	Mastervolt
Inverter	Mastervolt
Solar panel	yes
Shorepower	with cable

NAVIGATION

Compass	Richie
Depth sounder	Brookes & Gatehouse
Log	Brookes & Gatehouse
Windset	Brookes & Gatehouse
VHF	Sailor A1 no Atis
Autopilot	Brookes & Gatehouse Autopilot
Radar	Furuno 1721 Mk2
Plotter	Furuno GP1650
Navtex	ICS
Transmitter	Icom 70MkII (2005)
EPIRB	Jotron (batt to be checked)

EQUIPMENT

Sprayhood	yes
-----------	-----



Cockpit cover	yes
Bimini	+ solar panels
Cockpit cushions	yes
Bathing platform	yes
Boarding ladder	yes
Deck shower	yes
Anchor	Fortress
Anchor chain	yes
Windlass	electrical Lewmar
Deck crane	manual CARbo Fibre Radar mast combined with outboard hoist
Sea railing	wire
Pushpit	yes
Pulpit	yes
Life raft	Inspection needed
Lifebuoy	yes
Fenders	yes
Radio-cd player	JVC

RIGGING

Rigging	sloop-cutter
Standing rigging	Rod 2005
Brand mast	Nordic
Material mast	carbon
Spreaders	2 sets
Keel stepped mast	yes
Mainsail cover	yes
Fully battened mainsail	ZigZag tri-radial + 3 reefingpoints(2004)
Genoa	yes
Genoa III	Furling, tri-radial (2004)
Genoa furler	Reckmann
A-symmetric spi	2004



OCEAN CRUISER 49

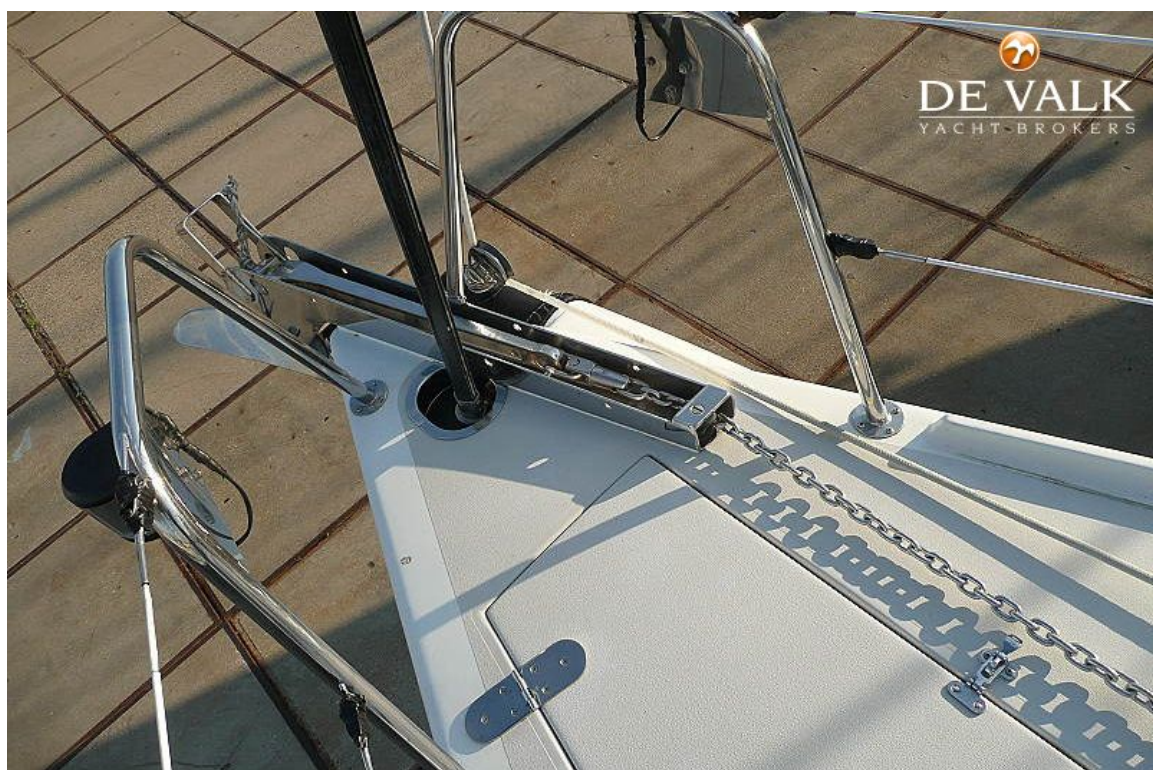
Staysail	Furling
Staysail furler	Reckmann
Stormjib	yes
Reefing System	slabreefing
Backstay adjuster	hydraulic Navtec (serviced 2009)
Boomvang	mechanical
Primary sheet winch	2 x Antal 60AST
Secondary sheet winch	2 x Antal 46AST
Halyard winches	electric 2 x Antal 46AST
Gennaker pole	carbon Retractable
Extra info	The last 5 years the yacht is allmost not used.



OCEAN CRUISER 49

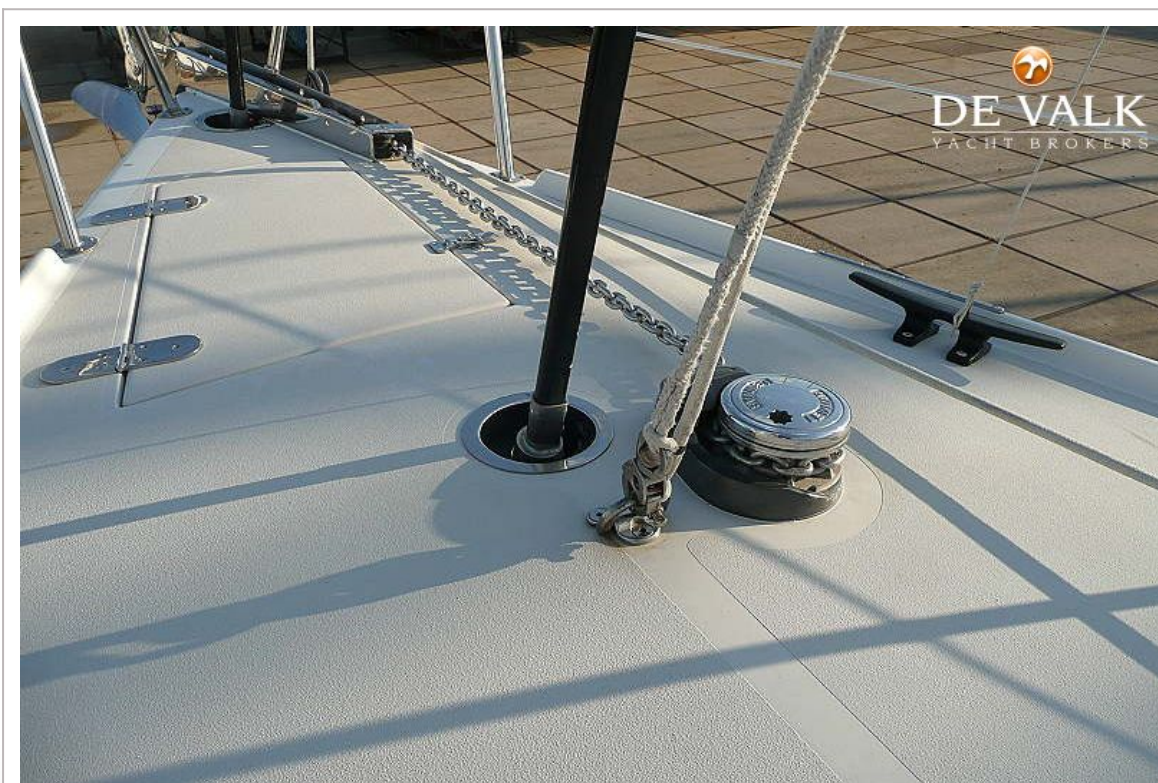
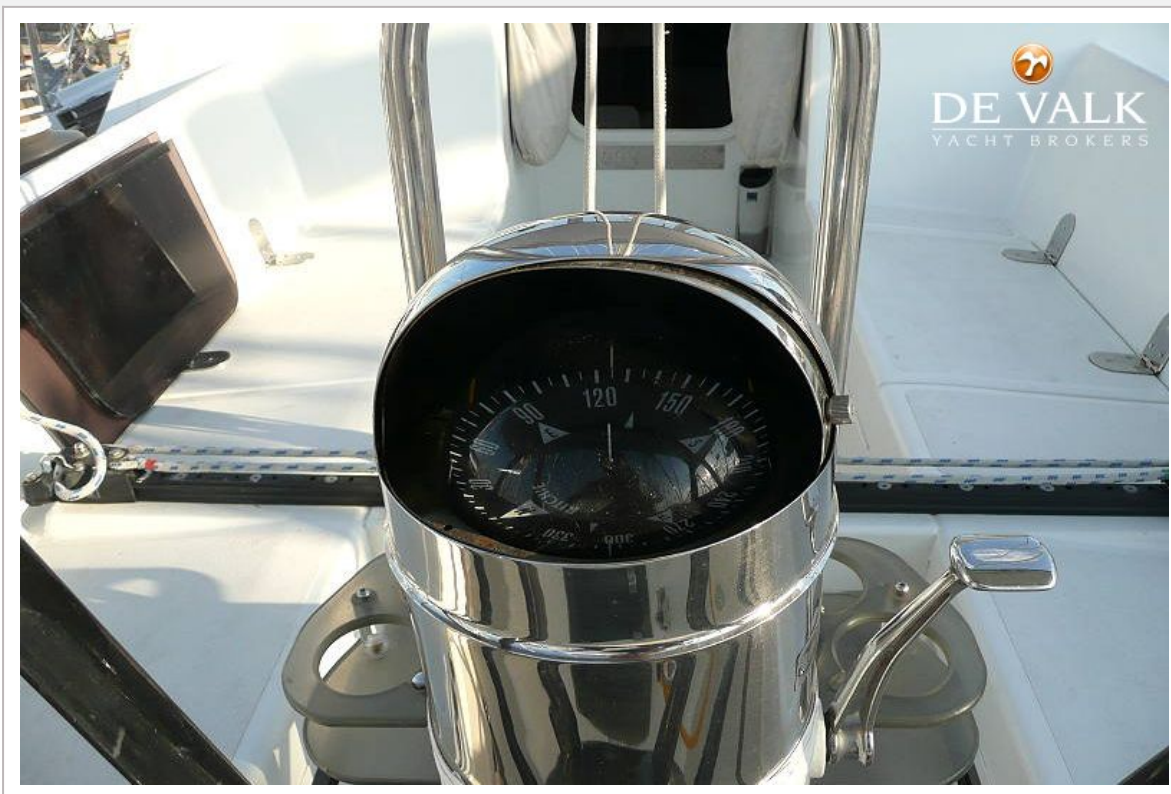


OCEAN CRUISER 49



OCEAN CRUISER 49

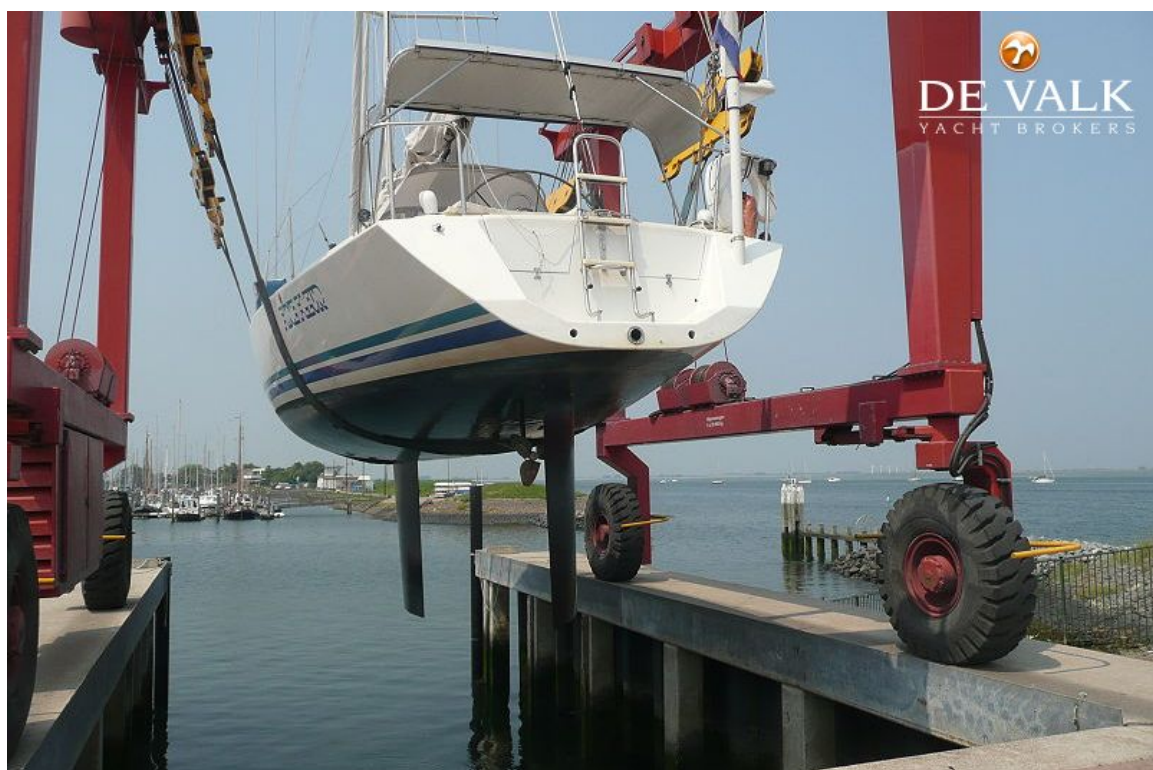




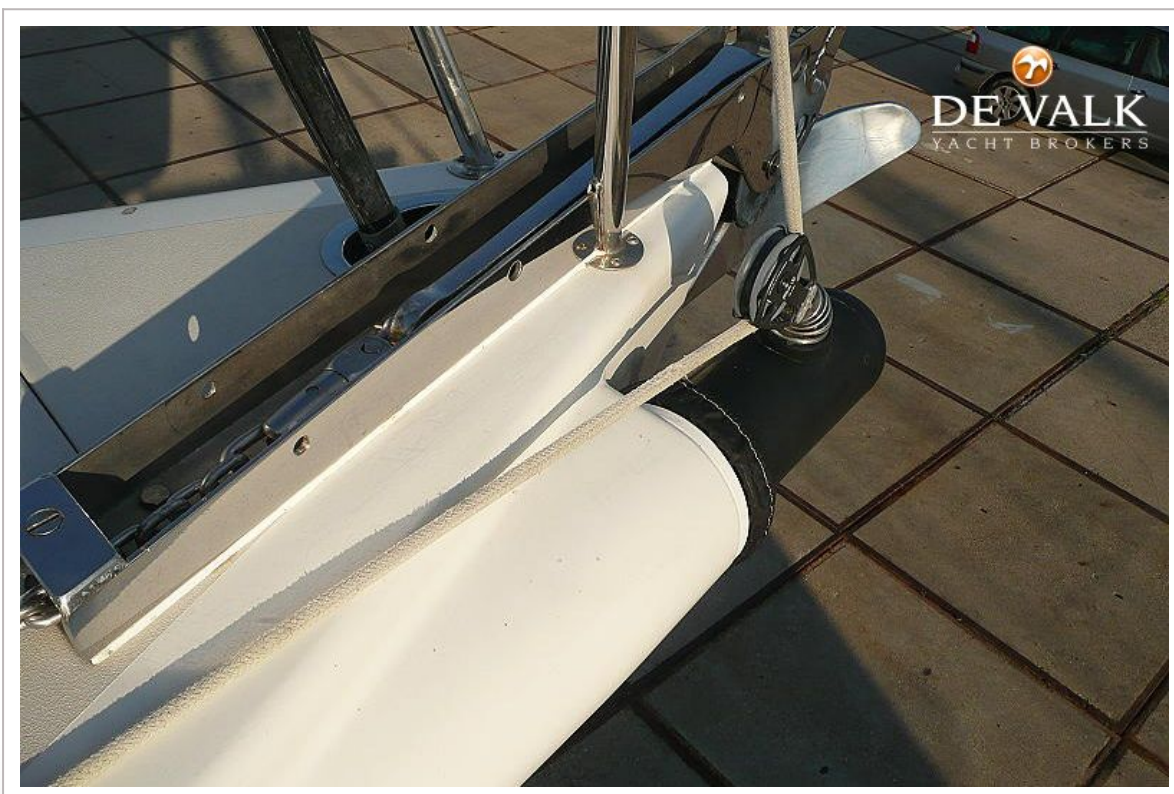
OCEAN CRUISER 49

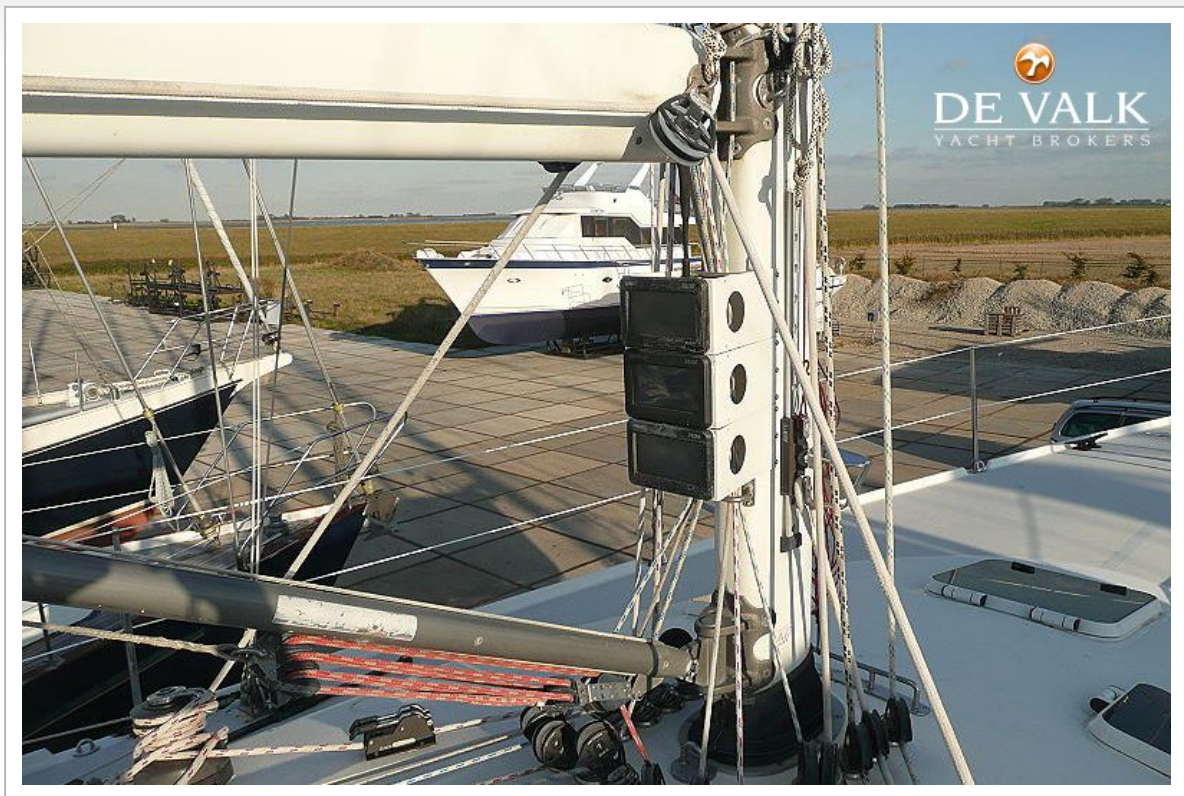


OCEAN CRUISER 49



OCEAN CRUISER 49





OCEAN CRUISER 49



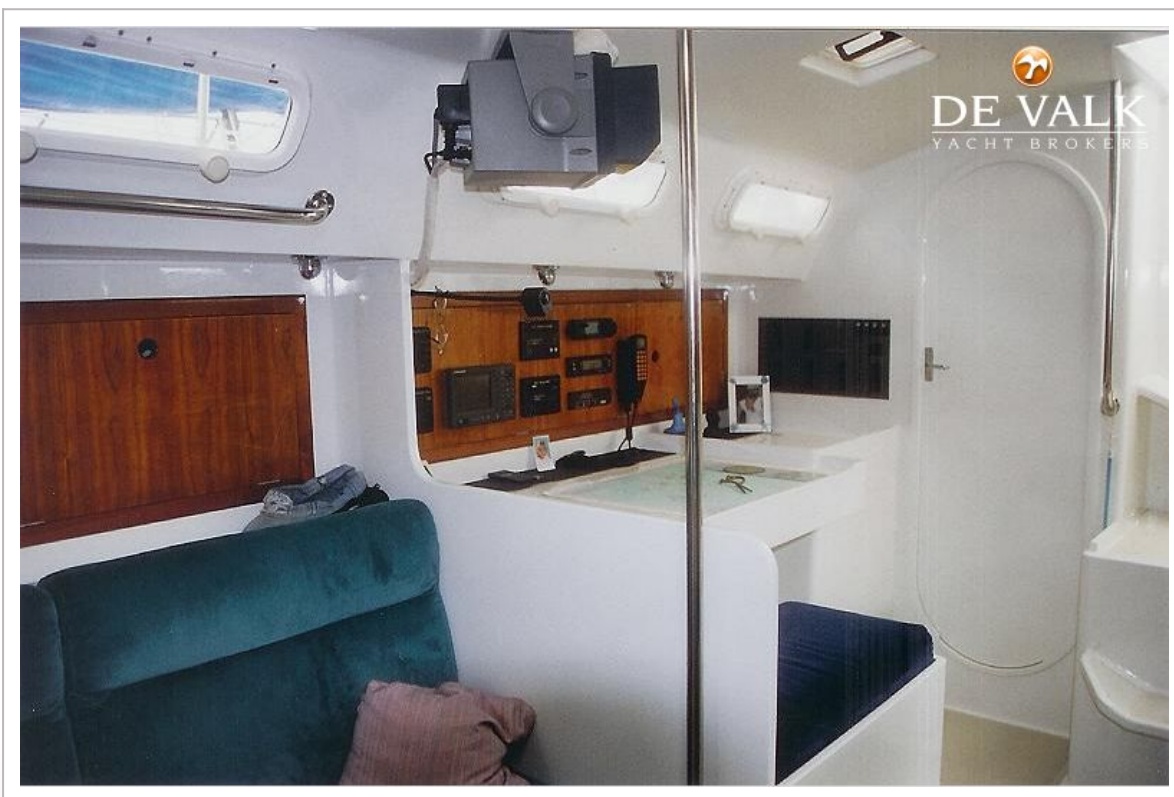
OCEAN CRUISER 49



OCEAN CRUISER 49



OCEAN CRUISER 49



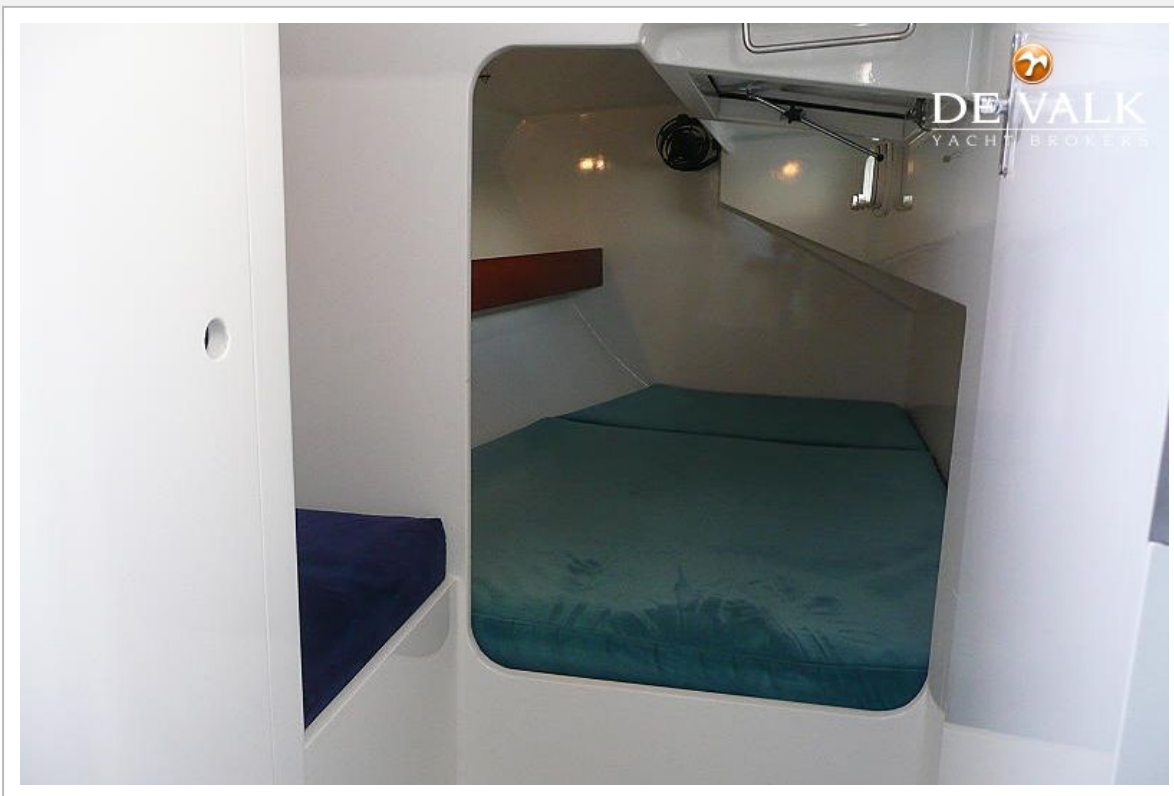
OCEAN CRUISER 49



OCEAN CRUISER 49

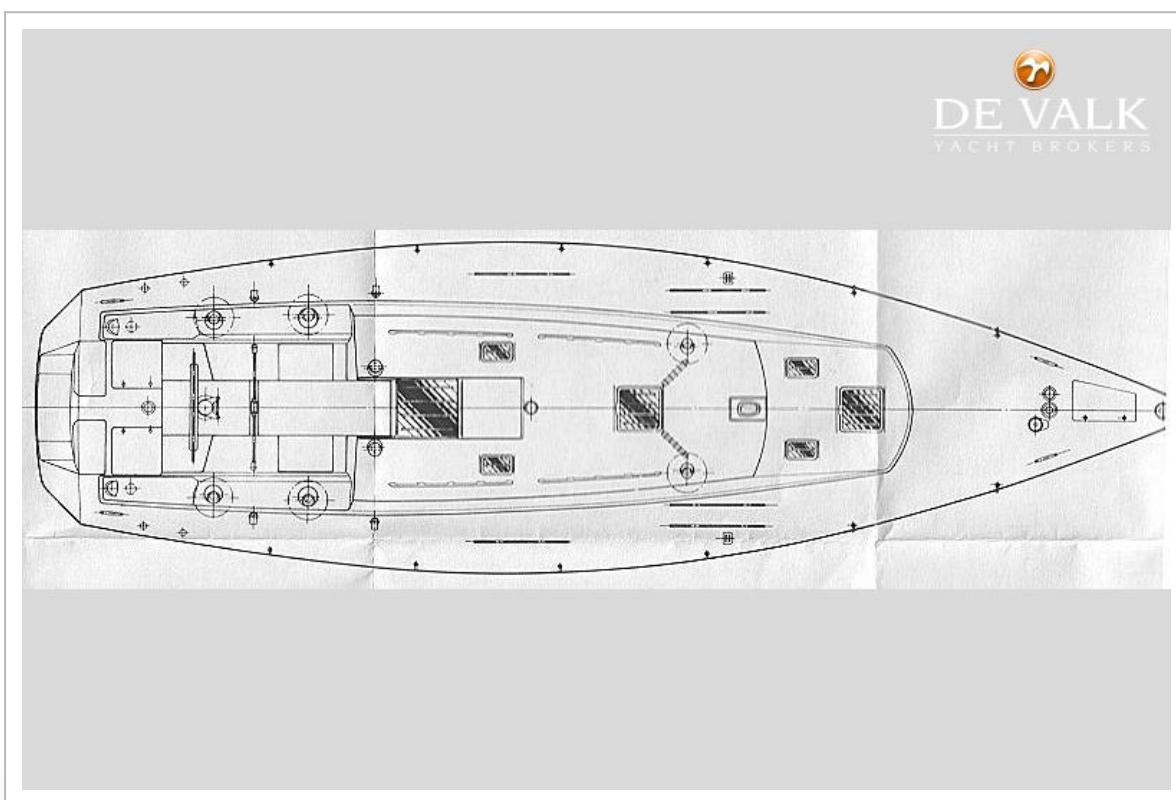
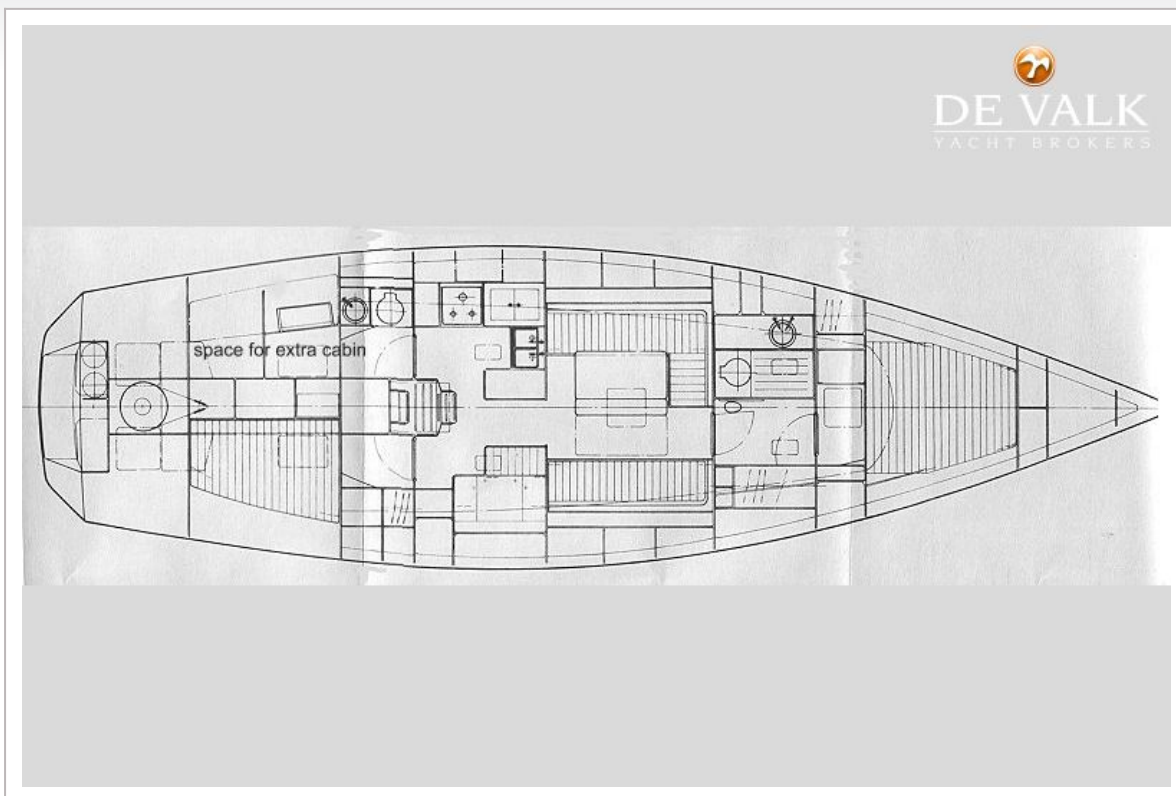


OCEAN CRUISER 49





OCEAN CRUISER 49



OCEAN CRUISER 49

