



DE VALK  
YACHT BROKERS



## BAVARIA 39 CRUISER



DE VALK  
YACHT BROKERS

# BAVARIA 39 CRUISER

## BROKER'S COMMENTS

The Bavaria 39 is a popular yacht from the Bavaria yard with a very high value for money rating. This size of 39 feet is for many sailors attractive. The yacht has an interior with 3 cabins/two heads which is ideal for family and/or a group of friends. With her 2nd owner, she has only been used for private sailing. Good equipment list with jet bow thruster. The interior is light and spacious and finished in mahogany showing the heritage. Large cockpit with ample seating and is deep and comfortable for in-marina use or when sailing.

*Harald Padberg*

## SPECIFICATIONS

<b>Dimensions</b>	12.14 x 3.97 x 2.00 (m)	<b>Builder</b>	Bavaria Yachtbau GmbH
<b>Built</b>	2005	<b>Cabins</b>	3
<b>Material</b>	GRP	<b>Berths</b>	6
<b>Engine(s)</b>	1 x Volvo Penta MD-2030 diesel	<b>Hp/Kw</b>	29.00 (hp), 21.32 (kw)
<b>Asking price</b>	sold (VAT )	<b>Lying</b>	at sales office

## CONTACT

<b>Sales office</b>	De Valk Monnickendam B.V.	<b>Telephone</b>	+31 (0)299 65 63 50
<b>Address</b>	Hoogedijk 6 1145 PM Katwoude NL	<b>E-mail</b>	monnickendam@devalk.nl

## DISCLAIMER

These particulars are given in good faith as supplied but cannot be guaranteed.



# BAVARIA 39 CRUISER

## GENERAL

Model	BAVARIA 39 CRUISER
Type	sailing yacht
LOA (m)	12,14
LWL (m)	11,80
Beam (m)	3,97
Draft (m)	2,00
Air draft (m)	17,05
Headroom (m)	2,00
Year built	2005
Builder	Bavaria Yachtbau GmbH
Country	Germany
Designer	J & J design
Displacement (t)	8,3
Ballast (tonnes)	cast iron 2,5
CE norm	A
Hull material	GRP
Hull colour	white
Hull shape	round-bilged
Keel type	fin keel
Superstructure material	GRP
Deck material	GRP
Deck finish	non-skid moulded in
Superstructure deck finish	non-skid moulded in
Cockpit deck finish	teak
Dorades	yes
Window frame	aluminium
Window material	polycarbonate
Deckhatch	4 x
Portholes	aluminium
Fuel tank (litre)	polyethylene 210



# BAVARIA 39 CRUISER

Freshwater tank (litre)	polyethylene 210 + 150
Blackwater tank (litre)	polyethylene 2 x 80
Blackwater tank extraction	deck extraction + uw line
Wheel steering	rack & pinion Lewmar
Emergency tiller	yes

## ACCOMMODATION

Cabins	3
Berths	6
Interior	mahogany
Layout	3 cabin's / two heads
Floor	teak and holly
Saloon	yes
Headroom saloon (m)	2,00
Heating	diesel ducted hot air Webasto
Chart table	yes
Dinette	yes
Galley	yes
Countertop	plastic
Sink	stainless steel Double
Cooker	calor gas Bavaria Yachts
Oven	Bavaria Yachts
Fridge	Waeco 12v
Hot water system	220V + engine
Water pressure system	electrical
Owners cabin	double bed
Bed length (m)	Slatted bed 2,10 x 1,80
Wardrobe	hanging/drawers/shelves
Bathroom	en suite
Toilet	en suite
Toilet system	manual



# BAVARIA 39 CRUISER

Wash basin	in the bathroom
Shower	en suite
Guest cabin 1	double bed
Bed length (m)	2,00 x 1,65
Wardrobe	hanging/drawers/shelves
Bathroom	shared
Toilet	shared
Toilet system	manual
Wash basin	in the bathroom
Shower	shared
Guest cabin 2	double bed
Bed length (m)	2,00 x 1,65
Wardrobe	hanging/drawers/shelves
Bathroom	shared
Toilet	shared
Toilet system	manual
Wash basin	in the bathroom
Shower	shared
Extra info	Original removable sofa wasn't used by owner but is present.

## MACHINERY

No of engines	1
Make	Volvo Penta
Type	MD-2030
HP	29,00
kW	21,32
Fuel	diesel
Year installed	2005
Maximum speed (kn)	7,5
Cruising speed (kn)	5,5



# BAVARIA 39 CRUISER

Consumption (l/hr)	3
Engine cooling system	freshwater heat exchanger
Drive	sail-drive
Saildrive seal	need to be replaced
Engine controls	bowden cable
Gearbox	mechanical
Bowthruster	water jet Jet Thruster (2016)
Exhaust	watercooled
Propeller type	folding Volvo Penta
Propeller blades	3
Manual bilge pump	yes
Electric bilge pump	yes
Electrical installation	12v/220v
Start battery	12v 55AH (2019)
Service battery	2x 12v 140 Ah (2019)
Bowthruster battery	2x
Battery monitor	yes
Battery charger	Quick 25A
Inverter	12V-230V 720w
Shorepower	with cable

## NAVIGATION

Compass	Plastimo Olympic
Depth sounder/log	Raymarine ST60 Tridata
Windset	Raymarine ST60
VHF	M-Tech
Autopilot	Raymarine 6001
GPS	Via plotter
Plotter	Raymarine a95 (2017)
Electronic chart(s)	Navionix
Navigation lights	yes



# BAVARIA 39 CRUISER

## EQUIPMENT

Sprayhood	yes
Bimini	yes
Cockpit cushions	yes
Cockpit table	yes
Boarding ladder	stainless steel
Deck shower	yes
Anchor	CQR Plough
Anchor chain	yes
Windlass	electrical Quick
Sea railing	wire
Grab rail (superstructure)	stainless steel
Pushpit	yes
Pulpit	yes
Binocular	yes
Radar reflector	yes
Fenders	yes
Mooring lines	yes
TV	Samsung
Radio-cd player	JVC
Speakers in salon	yes

## RIGGING

Rigging	sloop
Standing rigging	wire
Brand mast	Seldén
Material mast	aluminium
Spreaders	2 x
Mainsail	2014
Stoway mast	yes
Genoa	2014



# BAVARIA 39 CRUISER

<b>Genoa furler</b>	Furlex 300S
<b>Reefing System</b>	main in-mast furling
<b>Backstay adjuster</b>	tackle
<b>Boomvang</b>	mechanical Rodkick - Seldén
<b>Genoa sheetwinches</b>	2 x Lewmar 44ST
<b>Halyard winches</b>	2 x Lewmar 40ST





# BAVARIA 39 CRUISER



# BAVARIA 39 CRUISER





# BAVARIA 39 CRUISER



# BAVARIA 39 CRUISER

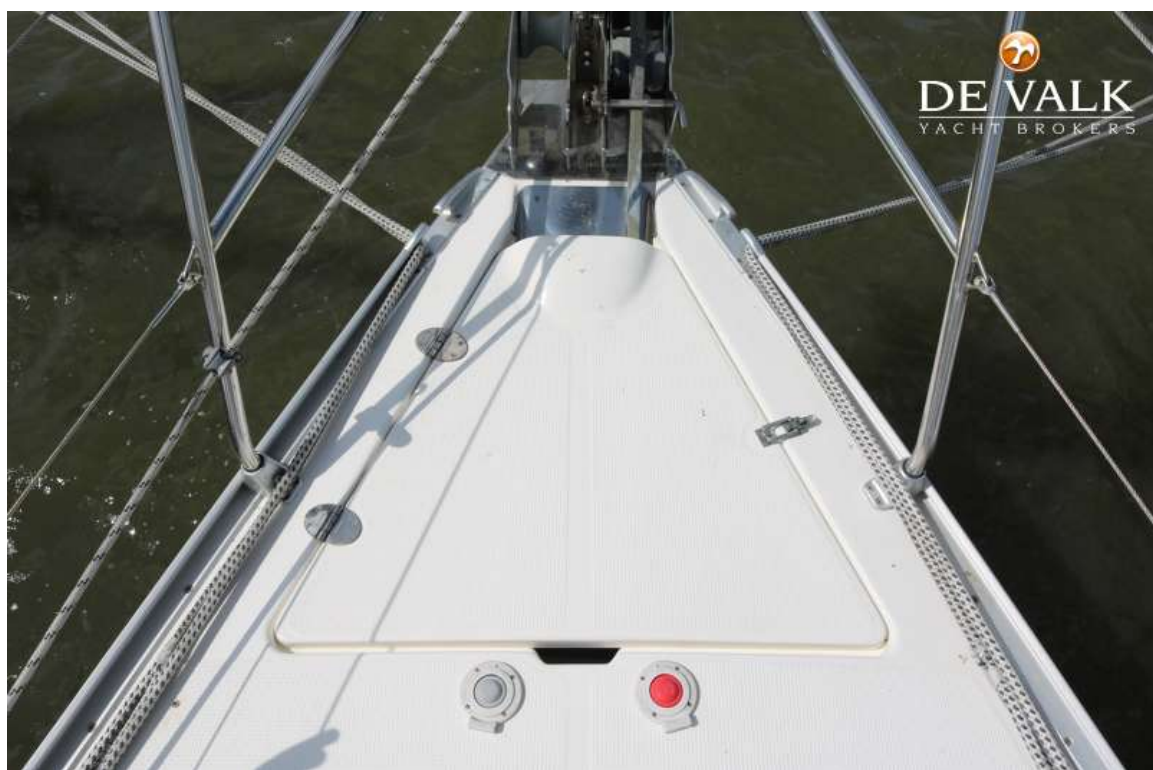




# BAVARIA 39 CRUISER



# BAVARIA 39 CRUISER

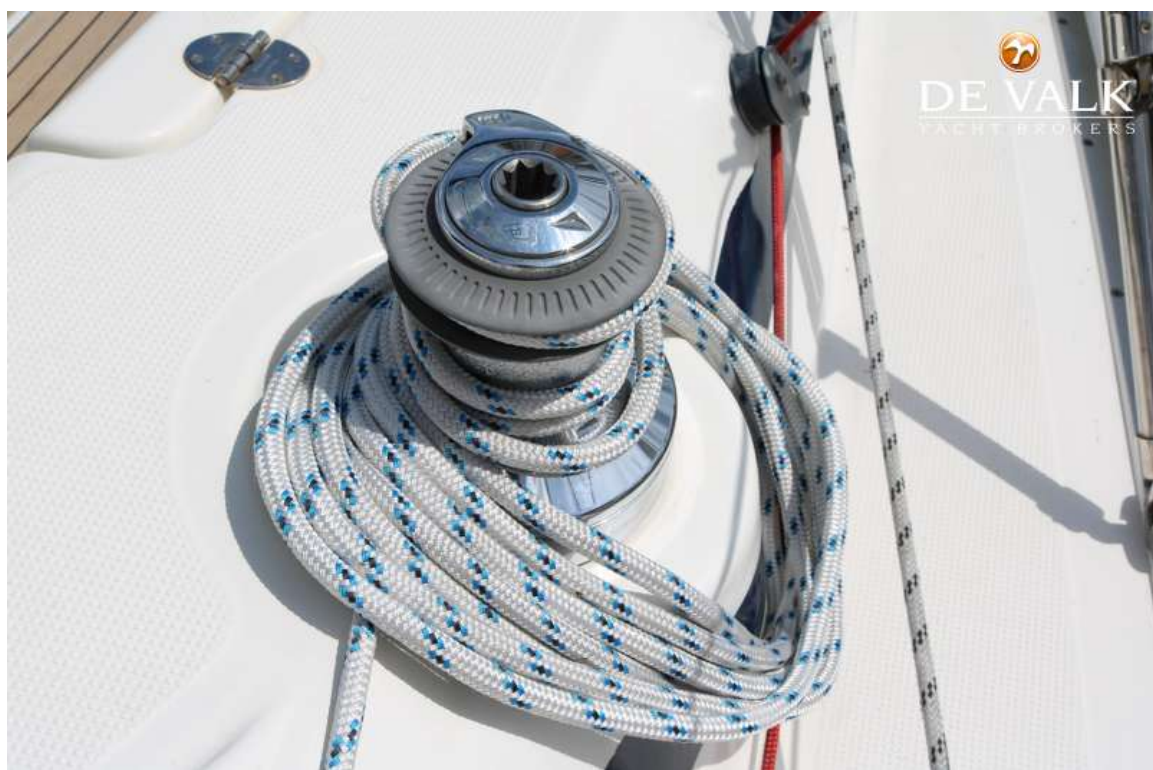




# BAVARIA 39 CRUISER



# BAVARIA 39 CRUISER





# BAVARIA 39 CRUISER

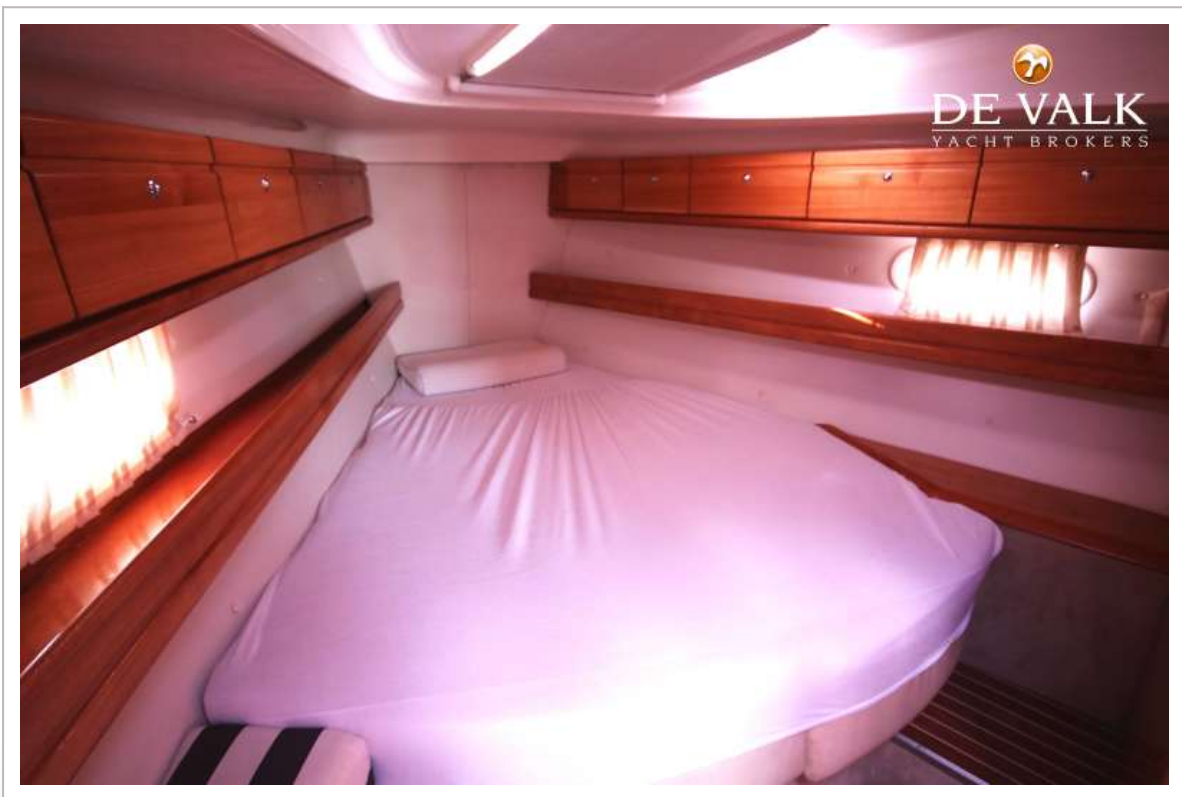


# BAVARIA 39 CRUISER

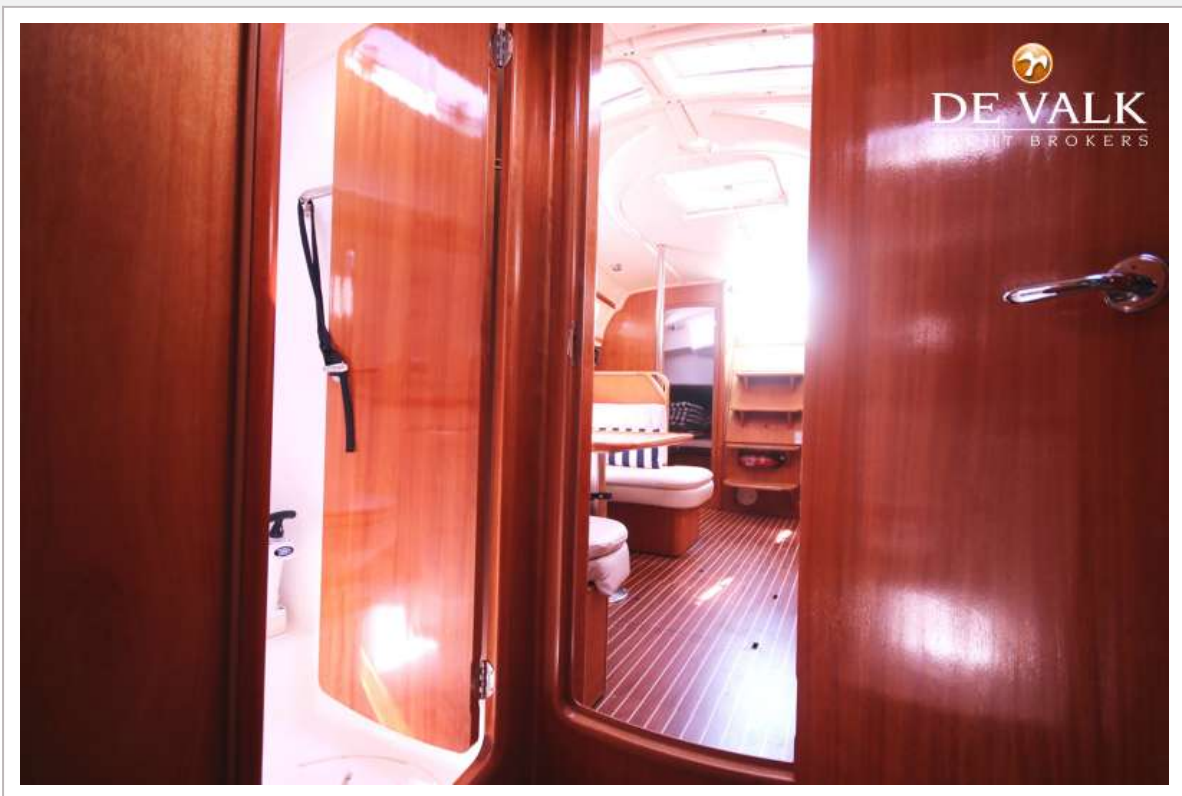




# BAVARIA 39 CRUISER



# BAVARIA 39 CRUISER





# BAVARIA 39 CRUISER

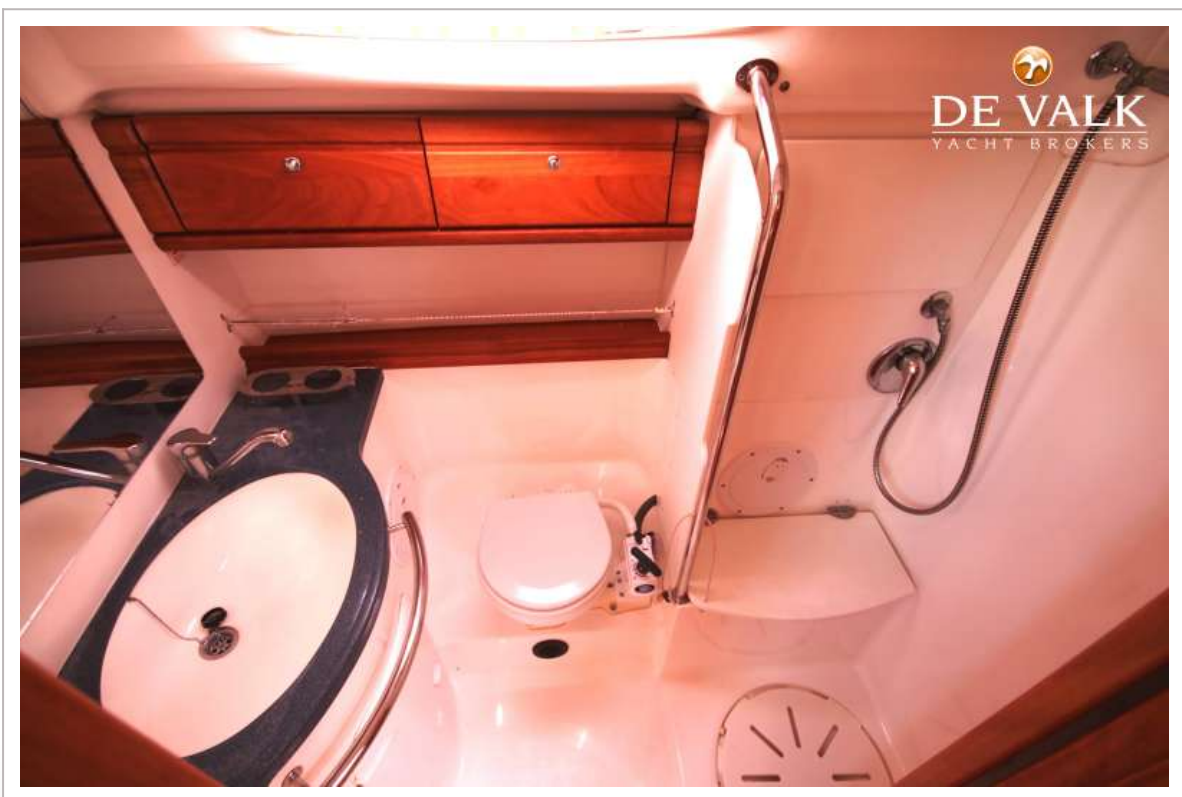


# BAVARIA 39 CRUISER





# BAVARIA 39 CRUISER



## BAVARIA 39 CRUISER





# BAVARIA 39 CRUISER

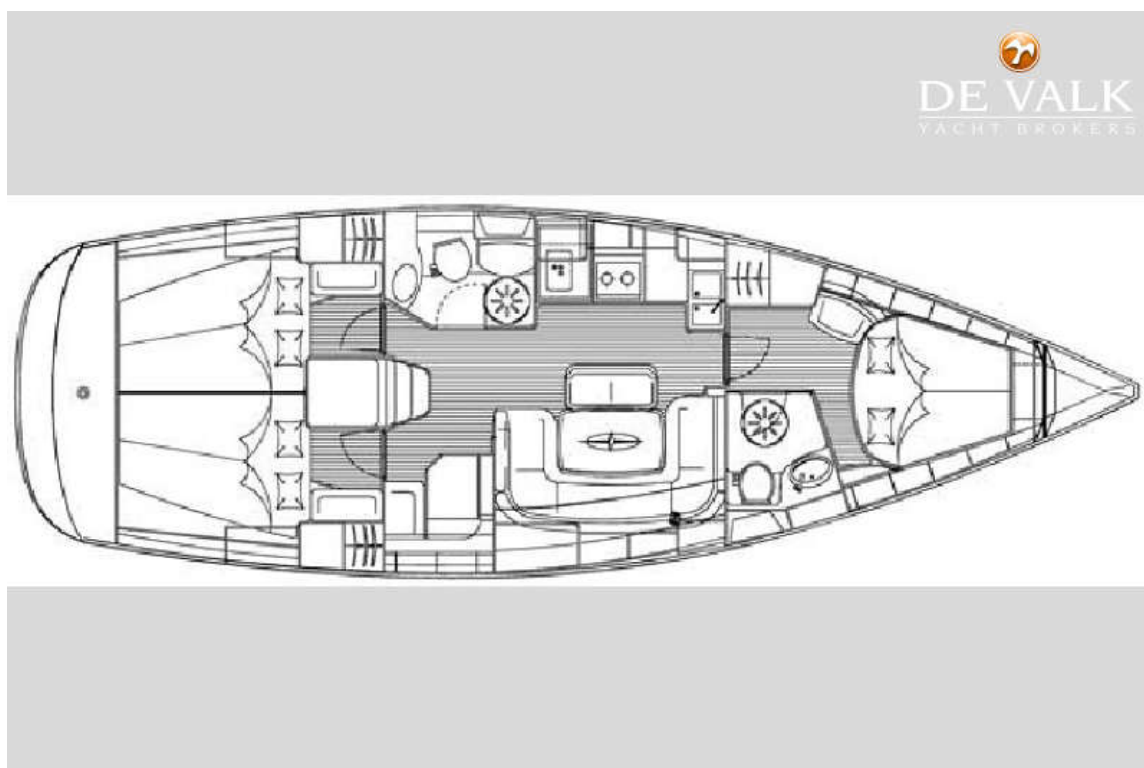


# BAVARIA 39 CRUISER

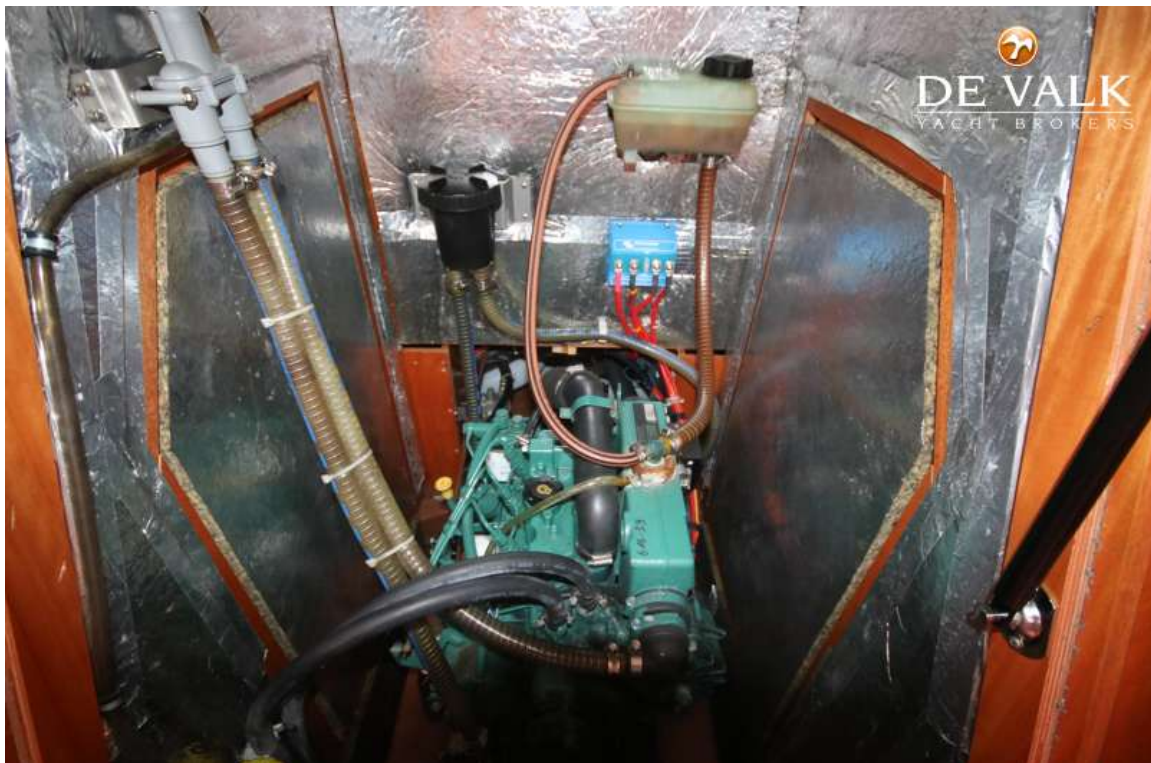
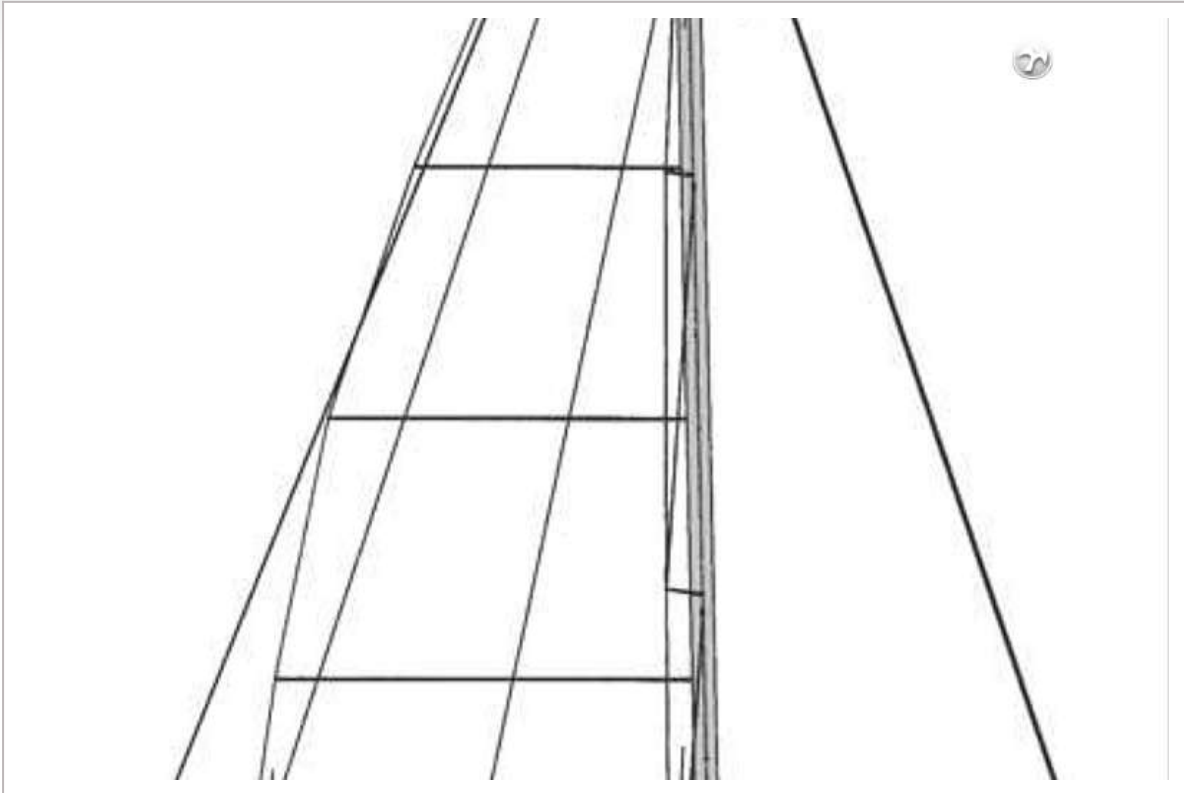




# BAVARIA 39 CRUISER



# BAVARIA 39 CRUISER



## BAVARIA 39 CRUISER

