



FINNGULF 33

FINNGULF 33

BROKER'S COMMENTS

The Finngulf 33 has acquired an excellent reputation for good sailing performance in all conditions. The quality of build and attention to detail always stands them above other boats in this class. This one owner Finngulf 33 is in excellent condition with many updates and upgrades done over the years. A great opportunity to acquire a modern, solidly built performance cruiser which feels far more substantial, above and below decks than many modern yachts of this size. Come and have a look at this Finnish beauty in our sales marina in Katwoude.

Harald Padberg

SPECIFICATIONS

Dimensions	10.13 x 3.30 x 1.80 (m)	Builder	Finngulf Yachts OY
Built	2006	Cabins	2
Material	GRP	Berths	6
Engine(s)	1 x Volvo Penta D1-30 diesel	Hp/Kw	29.00 (hp), 21.32 (kw)
Asking price	sold (VAT)	Lying	at sales office

CONTACT

Sales office	De Valk Monnickendam B.V.	Telephone	+31 (0)299 65 63 50
Address	Hoogedijk 6 1145 PM Katwoude NL	E-mail	monnickendam@devalk.nl

DISCLAIMER

These particulars are given in good faith as supplied but cannot be guaranteed.



GENERAL

Model	FINNGULF 33
Type	sailing yacht
LOA (m)	10,13
LWL (m)	9,26
Beam (m)	3,30
Draft (m)	1,80
Air draft (m)	16,30
Headroom (m)	1,90
Year built	2006
Builder	Finngulf Yachts OY
Country	Finland
Designer	Karl-Johan Stråhlmann
Displacement (t)	4,5
Ballast (tonnes)	1.8 t.
CE norm	A
Hull material	GRP
Hull colour	white
Hull shape	round-bilged
Keel type	fin keel
Superstructure material	GRP
Rubbing strake	wood
Deck material	GRP
Deck finish	teak
Superstructure deck finish	non-skid moulded in
Cockpit deck finish	teak
Antifouling (year)	2022
Dorades	2 units and 1 air ventilation opening for front cabin
Window frame	aluminium
Window material	polycarbonate
Deckhatch	2 X Lewmar



Portholes	aluminium - 7 X Lewmar
Fuel tank (litre)	stainless steel - 85 L.
Level indicator (fuel tank)	at chart table
Freshwater tank (litre)	stainless steel - 120 L.
Level indicator (freshwater)	at chart table
Blackwater tank (litre)	stainless steel - 85 L.
Blackwater tank extraction	deck extraction + uw line
Wheel steering	rack & pinion
Emergency tiller	yes
More info on hull	Hand laminated GRP sandwich construction with 15 mm foam core.
Extra info	Insect screens for all windows and hatches.
Extra info	Every winter stored in a heated indoor boat storage.
Extra info	Full history, maintenance records and invoices documented from day 1 till present.

ACCOMMODATION

Cabins	2
Berths	6
Interior	teak
Floor	teak and holly
Saloon	settees covered with Brittany Blue Alcantara upholstery
Headroom saloon (m)	1,83 cm
Heating	diesel ducted hot air - Eberspächer D4
Chart table	yes
Dinette	large drop leaf for six persons, centrally mounted.
Galley	L-Shaped
Countertop	plastic
Sink	stainless steel - 2 X
Cooker	calor gas - 2 burner
Oven	calor gas
Fridge	60L. The compressor and evaporator new installed in 2020



Hot water system	220V + engine
Water pressure system	electrical
Manual and/or foot pump	foot pump for freshwater tank and for seawater
Owners cabin	double bed
Bed length (m)	1,98 (headboard 1,66 width - footboard 1,25 width)
Wardrobe	hanging/drawers/shelves
Extra info	new Neptune mattresses in 2014 + slatted bottom in owners cabin
Guest cabin 1	v-bed
Bed length (m)	1,85 cm
Wardrobe	hanging/drawers/shelves
Bathroom	shared
Toilet	shared
Toilet system	manual
Wash basin	in the bathroom
Shower	shared
Extra info	Sea-cocks in the head replaced in 2020.
Extra info	Hot air heating outlets present in all cabins.

MACHINERY

No of engines	1
Make	Volvo Penta
Type	D1-30
HP	29
kW	21.32
Fuel	diesel
Year installed	2006
Maximum speed (kn)	7
Cruising speed (kn)	6.00
Consumption (l/hr)	3,5
Engine hours	568



Engine cooling system	freshwater heat exchanger
Drive	sail-drive
Saildrive seal	new 2014
Engine controls	bowden cable
Exhaust	watercooled
Propeller type	folding - Volvo Penta
Propeller blades	3
Manual bilge pump	yes
Electric bilge pump	yes
Electrical installation	12V / 220V
Start battery	74 Ah - new in Oct. 2021
Service battery	105 Ah - new in 2018 + 1 x spare 105 Ah - new in 2018
Windlass battery	100 Ah - new in 2022
Battery monitor	at chart table
Battery charger	Mastervolt 12/25-3
Extra info	Engine, gearbox and all related components have been serviced annually as directed by the manufacturer.

NAVIGATION

Compass	Plastimo at helm pedestal
Multi control display	Raymarine i 50 Tridata + i 70 Multi - new July 2018
Depth sounder	Raymarine
Log	transducer is new installed in 2020
Windset	Raymarine i 60 - new July 2018
VHF	Raymarine Ray60 VHF - new 2018
VHF handheld	Raymarine Ray 60 mic in cockpit - new 2018
Autopilot	Raymarine EV-100 + ACU 100 - new 2020 & 2021
Plotter/GPS	Raymarine AXIOM 9 - 9" MFD - new 2018
Navtex	Nasa Clipper - 2007
Electronic chart(s)	2 X
AIS transponder	AS 700 Class B + splitter - new 2018



Navigation lights

yes

EQUIPMENT

Sprayhood with grab rail

Colour: Gris Alu - year 2015

Sun awning

3 X

Cockpit table

yes

Bathing platform

yes

Boarding ladder

stainless steel

Anchor

Danforth

Anchor chain

stainless steel + rope

Windlass

electrical - Loftrans 1000

Sea railing

wire

Grab rail (superstructure)

stainless steel

Pushpit

stainless steel

Pulpit

stainless steel

Life raft

Plastimo 28827 G 0016

Life raft (pers)

container - 4 pers.

Last life raft survey

2021

Lifejackets

2 X

Lifebuoy

yes

Safety lines on deck

yes

Binocular

Steiner Commander 5

Fenders

6 X

Mooring lines

6 X

Fire extinguisher

2 X

Extra info

Windlass can be operated by remote control or by foot switch on the front deck.

RIGGING

Rigging

fractional

Standing rigging

wire



Brand mast	Seldén
Material mast	aluminium
Keel stepped mast	yes
Mainsail	Lazy Jack system
Mainsail cover	Colour: Gris Alu - year 2015
Battcars	with roller bearings
Fully battened mainsail	Tri-Radial DCX grey - 33,72 m2 - year 2015
Genoa	Tri-Radial DCX grey - 23,70 m2 - year 2015
Genoa furler	Furlex 200
Genoa cover	Colour: Gris Alu - year 2015
Gennaker	Approx. 125 m2 - year unknown - Good condition
Reefing System	slabreefing
Backstay adjuster	tackle - 2019
Boomvang	tackle
Primary sheet winch	2 X Harken 28ST
Halyard winches	2 X Harken 40ST
Gennaker pole	aluminium
Isolated backstay	yes
Extra info	DCX Cruise Laminate offers low stretch, high abrasion resistance and high performance!
Extra info	New running rigging 2019. In addition to the Gennaker pole, there is also an aluminum Genoa pole.



FINNGULF 33



FINNGULF 33



FINNGULF 33



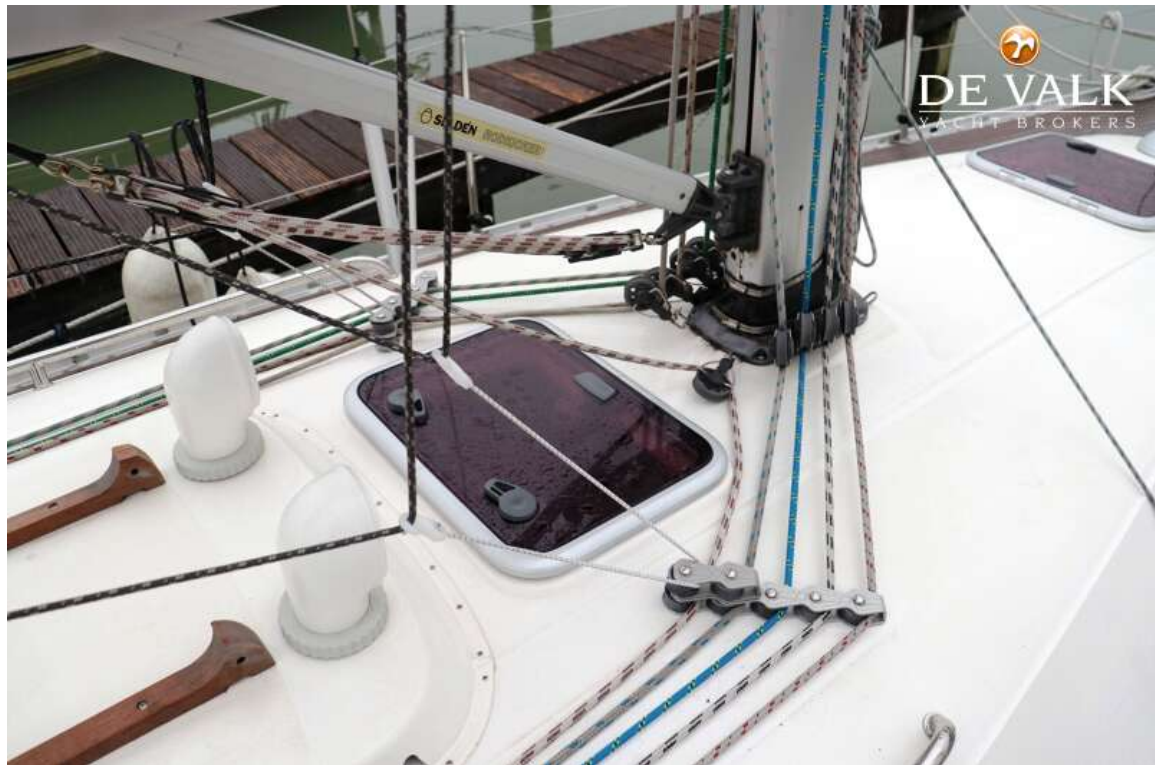
FINNGULF 33



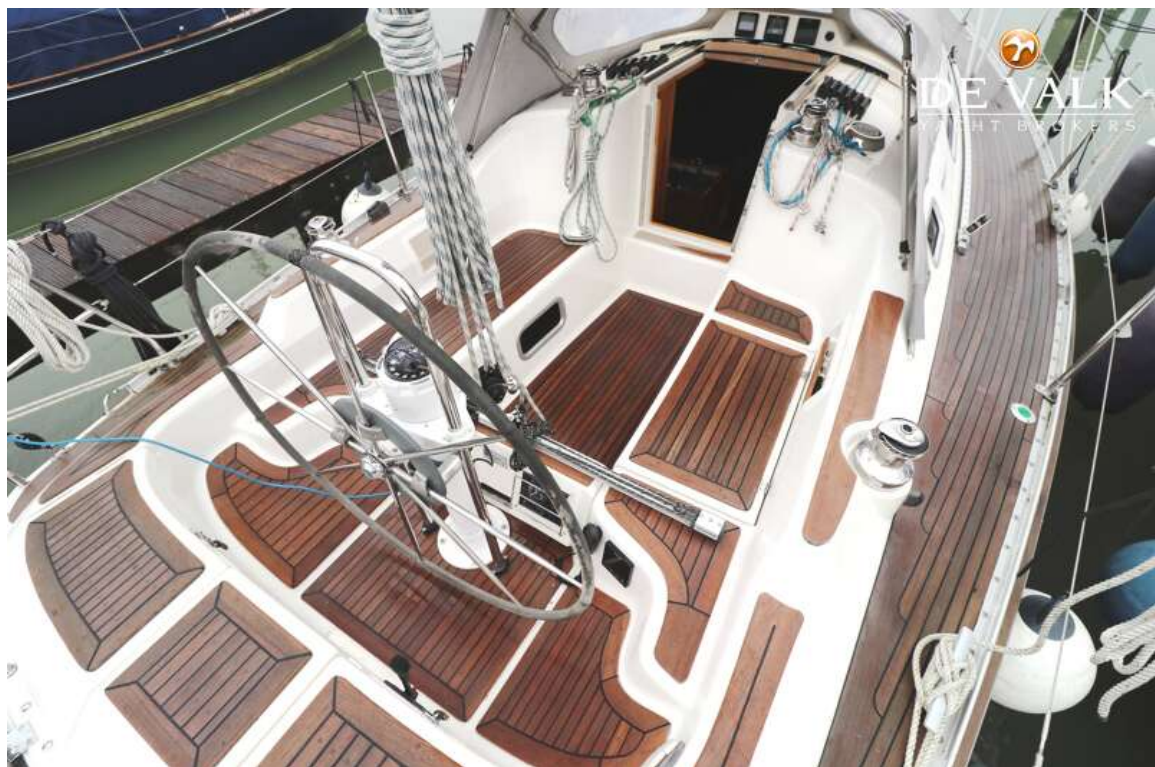
FINNGULF 33



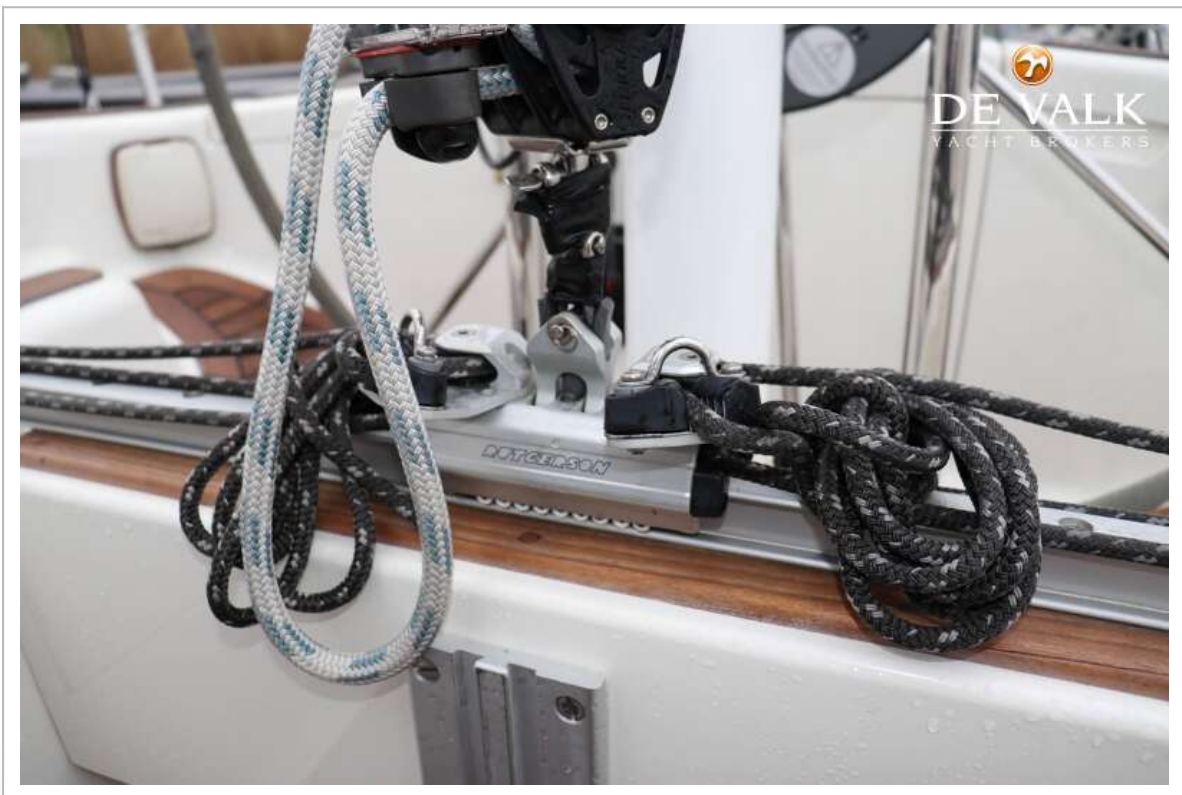
FINNGULF 33



FINNGULF 33



FINNGULF 33



FINNGULF 33



FINNGULF 33



FINNGULF 33



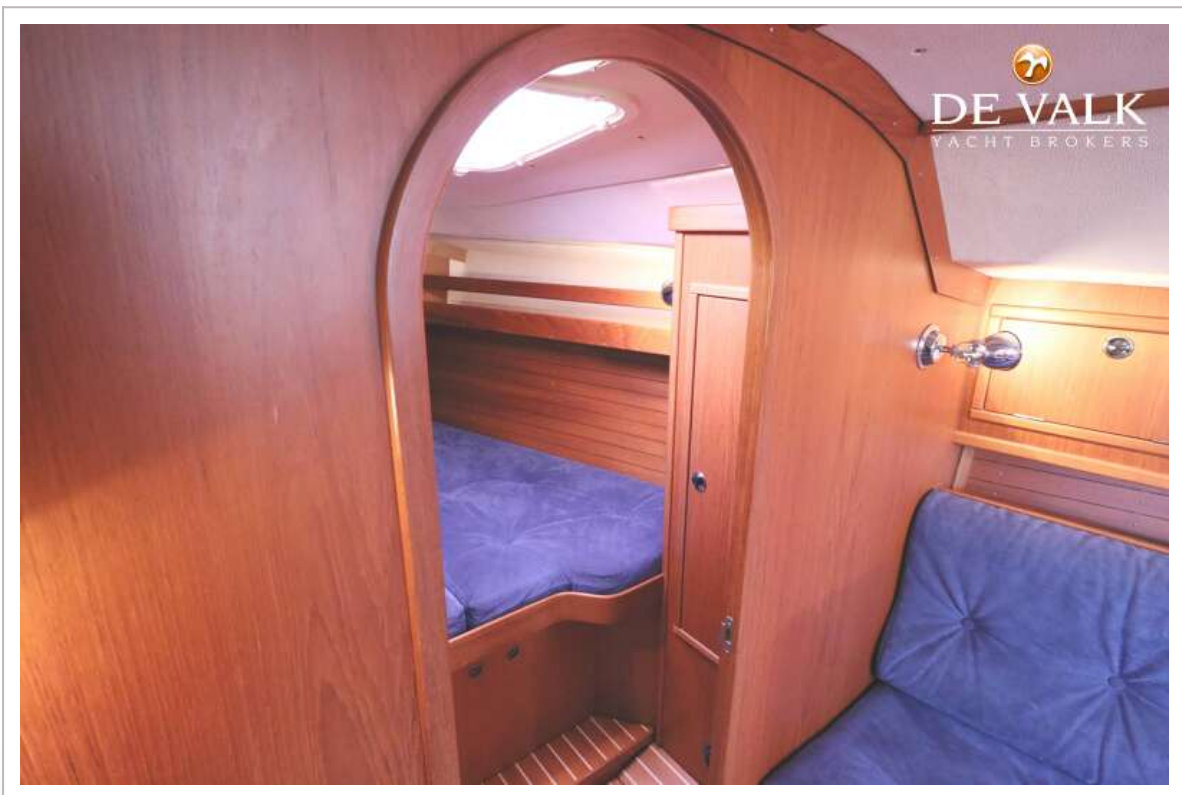
FINNGULF 33



FINNGULF 33



FINNGULF 33



FINNGULF 33



FINNGULF 33



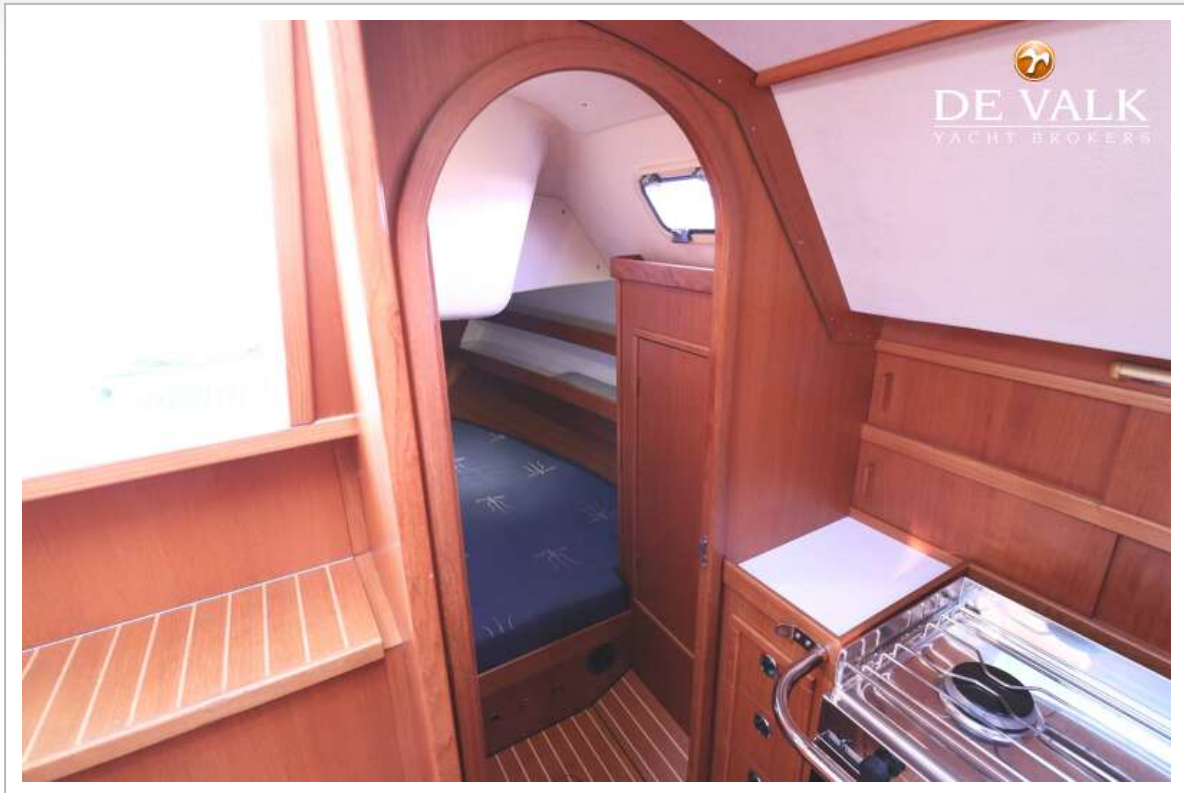
FINNGULF 33



FINNGULF 33



FINNGULF 33



FINNGULF 33

