



DE VALK  
YACHT BROKERS



## TRAWLER EXPLORER 60



DE VALK  
YACHT BROKERS

# TRAWLER EXPLORER 60

## BROKER'S COMMENTS

Custom built Aluminum trawler in true Explorer style to expand your horizons. 60 Feet of sturdy build quality, well equipped, large fuel and water tanks and fitted with stabilizers, airco and central heating, this go-anywhere Explorer 60 can handle both warmer and colder climates. She underwent a major refit in 2007 (the list is very comprehensive) and is ready for you to do some serious in- and offshore cruising. The salon, galley, pilothouse and flybridge offer good accommodations above deck and 4 double cabins below. Ample storage plus a big lazarette aft below the large enclosed cockpit.

*Marc Weijenberg*

## SPECIFICATIONS

<b>Dimensions</b>	18.32 x 5.35 x 1.82 (m)	<b>Builder</b>	Van Toledo / Interyachts Holland
<b>Built</b>	1997	<b>Cabins</b>	4
<b>Material</b>	Aluminium	<b>Berths</b>	8
<b>Engine(s)</b>	2 x Cummins 6BT5.9-M diesel	<b>Hp/Kw</b>	2 x 210.00 (hp), 154.35 (kw)
<b>Asking price</b>	sold (VAT )	<b>Lying</b>	elsewhere / Not at sales office

## CONTACT

<b>Sales office</b>	De Valk Sint Annaland B.V.	<b>Telephone</b>	+31 (0)166 601 000
<b>Address</b>	Koelhuisweg 4 4697 RM Sint Annaland NL	<b>E-mail</b>	sintannaland@devalk.nl

## DISCLAIMER

These particulars are given in good faith as supplied but cannot be guaranteed.



# TRAWLER EXPLORER 60

## GENERAL

<b>Model</b>	TRAWLER EXPLORER 60
<b>Type</b>	motor yacht
<b>LOA (m)</b>	18,32
<b>LWL (m)</b>	0,00
<b>Beam (m)</b>	5,35
<b>Draft (m)</b>	1,82
<b>Air draft (m)</b>	8,75
<b>Air draft min (m)</b>	5,30
<b>Headroom (m)</b>	2,02
<b>Year built</b>	1997
<b>Launched</b>	Complete refit 2007 by Alumarine
<b>Builder</b>	Van Toledo / Interyachts Holland
<b>Country</b>	The Netherlands
<b>Designer</b>	Piet de Jonge Yacht Design
<b>Displacement (t)</b>	50
<b>Ballast (tonnes)</b>	lead in aluminum 3,5
<b>CE norm</b>	NA
<b>Hull material</b>	aluminium
<b>Hull colour</b>	blue
<b>Hull thickness (mm)</b>	8-6 rib-distance 40cm
<b>Hull shape</b>	round-bilged
<b>Superstructure material</b>	aluminium
<b>Rubbing strake</b>	aluminum
<b>Deck material</b>	aluminium
<b>Deck finish</b>	teak
<b>Superstructure deck finish</b>	teak
<b>Cockpit deck finish</b>	teak
<b>Window material</b>	double glazing (2007)
<b>Deckhatch</b>	yes
<b>Portholes</b>	aluminium



# TRAWLER EXPLORER 60

<b>Insulation</b>	foam
<b>Flybridge</b>	yes
<b>Radar arch</b>	collapsible
<b>Mast can be lowered</b>	hydraulic
<b>Fuel tank (litre)</b>	aluminium 4 x (total 8000)
<b>Freshwater tank (litre)</b>	aluminium 2 x (total 2500)
<b>Blackwater tank (litre)</b>	aluminium 2 x (total 1800)
<b>Level indicator (blackwater)</b>	Tankwatch
<b>Blackwater tank extraction</b>	deck extraction + pump
<b>Wheel steering</b>	hydraulic (2007)
<b>Flybridge helm position</b>	hydraulic (2007)
<b>Emergency tiller</b>	yes
<b>More info on paintwork</b>	Kooij Netherlands (2-comp system) all done 2007
<b>Extra info</b>	Has a valid CVO certification

## ACCOMMODATION

<b>Cabins</b>	4
<b>Berths</b>	8
<b>Interior</b>	teak Cream panels + teak trim
<b>Floor</b>	teak and holly
<b>Open cockpit</b>	yes
<b>Pilot house</b>	yes
<b>Deck saloon</b>	yes
<b>Headroom saloon (m)</b>	1,98 - 2,02
<b>Heating</b>	central heating Eberspacher D16W (2009)
<b>Air-conditioning</b>	reverse cycle airco Webasto/CLD 40.000 BTU all cabins (2002)
<b>Dinette</b>	With two seats opposite
<b>Opening door to aft deck</b>	Partible door
<b>Galley</b>	yes
<b>Countertop</b>	
<b>Sink</b>	stainless steel 1 x



# TRAWLER EXPLORER 60

<b>Cooker</b>	ceramic Bosch (220v)
<b>Extractor</b>	yes
<b>Microwave</b>	LG (220v)
<b>Fridge</b>	Miele + extra in pilothouse
<b>Freezer</b>	Miele
<b>Hot water system</b>	220V + engine 2 x boiler
<b>Water pressure system</b>	electrical
<b>Dishwasher</b>	Siemens
<b>Owners cabin</b>	double bed
<b>Bed length (m)</b>	2,00 x 1,60
<b>Wardrobe</b>	hanging/drawers/shelves
<b>Bathroom</b>	en suite I
<b>Toilet</b>	en suite
<b>Toilet system</b>	electric Vacu-flush
<b>Wash basin</b>	in the bathroom
<b>Shower</b>	en suite
<b>Extra info</b>	Tempur matrass
<b>Guest cabin 1</b>	double bed VIP-cabin
<b>Bed length (m)</b>	2,00 x 1,80
<b>Wardrobe</b>	hanging and shelves
<b>Bathroom</b>	en suite II
<b>Toilet</b>	en suite
<b>Toilet system</b>	electric Tecma
<b>Wash basin</b>	at the toilet
<b>Shower</b>	en suite
<b>Extra info</b>	Tempur matrass
<b>Guest cabin 2</b>	
<b>Bed length (m)</b>	2,00 x 1,35
<b>Wardrobe</b>	hanging and shelves
<b>Bathroom</b>	III
<b>Toilet</b>	shared
<b>Toilet system</b>	electric Vacuflush



# TRAWLER EXPLORER 60

Wash basin	in the bathroom
Shower	shared Prepared/voorbereid/vorbereitet
Extra info	Tempur matrass
Guest cabin 3	bunk bed
Bed length (m)	2,00 0,80
Wardrobe	shelves
Extra info	Tempur matrass
Washing machine/dryer combi	Miele Hydromatic
Central vacuum cleaner	Dust-Control

## MACHINERY

No of engines	2
Make	Cummins
Type	6BT5.9-M
HP	210
kW	154,35
Fuel	diesel
Year installed	1996
Maximum speed (kn)	11
Cruising speed (kn)	8
Consumption (l/hr)	20ltr - 8 knots
Range (nm)	3000 - 8 knots
Engine hours	2680
Engine cooling system	freshwater heat exchanger
Drive	shaft
Engine controls	electrical EMC
Gearbox	hydraulic
Bowthruster	hydraulic Bowthruster 35hp
Exhaust	watercooled
Thrust bearing	Amartech
Propeller type	fixed



# TRAWLER EXPLORER 60

<b>Propeller blades</b>	4
<b>Propeller shaft material</b>	stainless steel Amartech, with rope cutters
<b>Shaft lubrication</b>	water
<b>Electric bilge pump</b>	4 x
<b>Bilge alarm</b>	yes
<b>Electrical installation</b>	12/24/220v
<b>Generator</b>	silent separator Onan E-QD 11kW (2007)
<b>Running hours generator</b>	1125
<b>Generator 2</b>	Hydrogen 10kW (hydraulic)
<b>Start battery</b>	2 x
<b>Service battery</b>	4 x Mastervolt Lion cells 4 x 24v/5000Wh (2016)
<b>Generator battery</b>	1 x + Mastervolt charger
<b>Battery monitor</b>	Mastervolt + automatic AC switching
<b>Battery charger</b>	Mastervolt 24v/20-3
<b>Battery charger/inverter</b>	2 x Mastervolt 24v/2000watt/60amp (2016)
<b>Diode battery combiners</b>	yes
<b>Shorepower</b>	with cable
<b>Insulation transformer</b>	Mastervolt Mass Gi3.5 + insulation checkpanel
<b>Stabilizers</b>	fin Koopnautic Searocq246 (hydraulic)
<b>Extra info</b>	Flowscan fuelconsumption indicators
<b>Extra info</b>	Mastervolt GPRS monitor-module prepared for cellphone app
<b>Extra info</b>	Debug fuelfilter system

## NAVIGATION

<b>Compass</b>	Ritchie
<b>Compass on flybridge</b>	Ritchie
<b>Electric compass</b>	Brookes & Gatehouse
<b>Depth sounder</b>	Simrad IS42
<b>Log</b>	Simrad IS42
<b>Windset</b>	Brookes & Gatehouse
<b>Repeater</b>	Simrad + Brookes & Gatehouse



# TRAWLER EXPLORER 60

<b>VHF</b>	Garmin GHS10i + Furuno H2721
<b>VHF handheld</b>	Icom + Cobra Marine
<b>Autopilot</b>	Simrad AP35 + Simrad FU35 joystick
<b>Rudder angle indicator</b>	Simrad
<b>Radar</b>	Furuno 17" open array
<b>GPS</b>	Furuno Navnet
<b>Plotter</b>	Furuno Navnet + flybridge repeater
<b>Electronic chart(s)</b>	2 x
<b>AIS transponder</b>	Furuno Navnet Class B
<b>EPIRB</b>	Jotron Class 2 (valid till 2011)
<b>Camera</b>	FLIR Night-vision + 4-way cameras
<b>Navigation lights</b>	yes
<b>Searchlight</b>	ITT remote
<b>Extra info</b>	Shipmodule Nmea multiplexer
<b>Extra info</b>	RR Active antenna system

## EQUIPMENT

<b>Cockpit cover</b>	yes
<b>Bimini</b>	yes
<b>Bathing platform</b>	Fold-down type hydraulic
<b>Boarding ladder</b>	aluminum
<b>Gangway</b>	Aluminum
<b>Deck shower</b>	yes
<b>Anchor</b>	Bruce
<b>Anchor chain</b>	70mtr (2019)
<b>Chain counter</b>	(2020)
<b>Windlass</b>	hydraulic Lofrans ProjectX4 (2019)
<b>Windlass aft</b>	hydraulic 2 x Meissner (capstan 2-speed)
<b>Deck wash</b>	Fore and aft
<b>Dinghy</b>	rigid inflatable Zodiac Solas-2 (2015)
<b>Outboard</b>	Yamaha 20hp (2015) 4-stroke





# TRAWLER EXPLORER 60

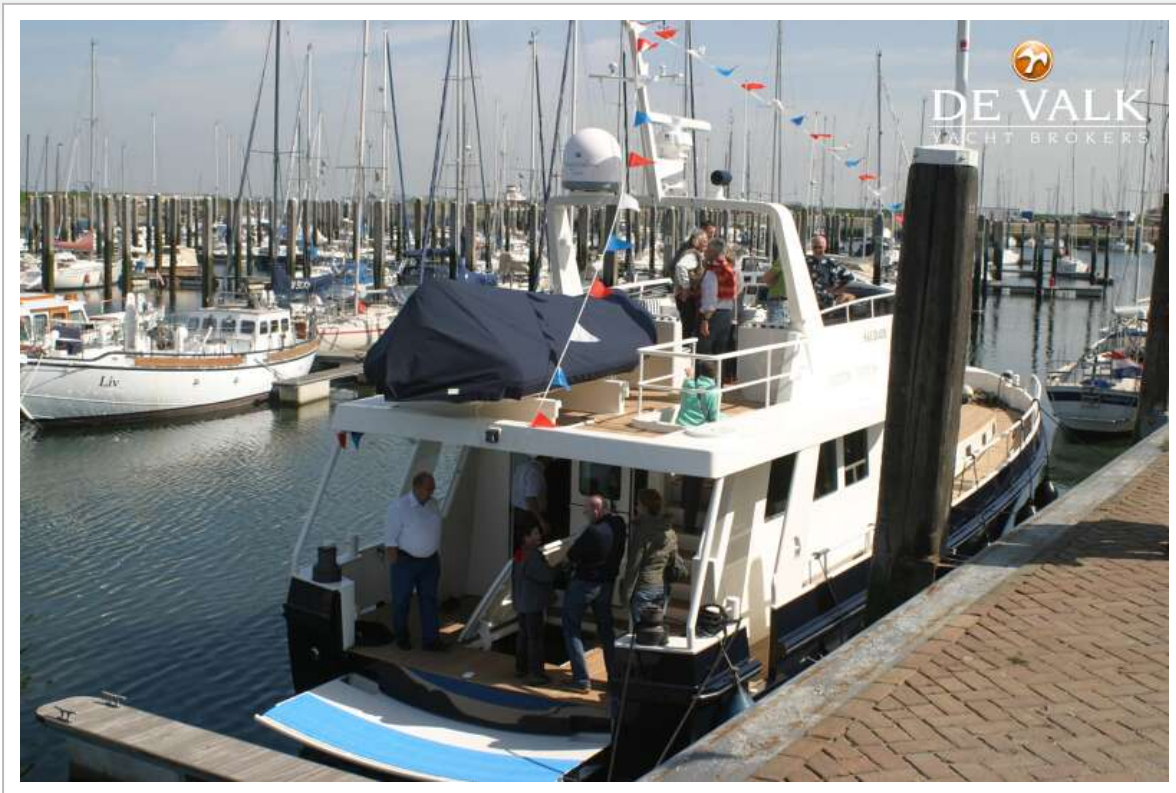
Deck crane	hydraulic Opacmare (500kg)
Sea railing	aluminum
Grab rail (superstructure)	aluminium
Railing side opening gates	2 x
Pushpit	yes
Pulpit	yes
Life raft	valise (or bag) 2 x Seasava PlusX
Life raft (pers)	2 x 6 pers
Last life raft survey	(valid till 2021)
Lifejackets	yes
Lifebuoy	2 x (+lifefling)
Wiper	5 x Exalto + wash
Horn	air pressure
Fenders	yes
Mooring lines	yes
Spare parts	yes
Tools	yes
Alarm system	yes
TV	Samsung in lift-cabinet
TV receiver	yes
TracVision ball	KVH 6hp (may need an update)
Radio-cd player	3 x
DVD player	Samsung
Surround Sound System	yes
Cockpit speakers	+ flybridge
Speakers in salon	yes
Speakers in cabin	yes
Clock - barometer	Complete Schatz set
Fire extinguisher	2 x 6ltr
Latest extinguisher survey	2018
Auto extinguisher system	12 x Knock-Out (2018)



# TRAWLER EXPLORER 60



# TRAWLER EXPLORER 60





# TRAWLER EXPLORER 60



# TRAWLER EXPLORER 60

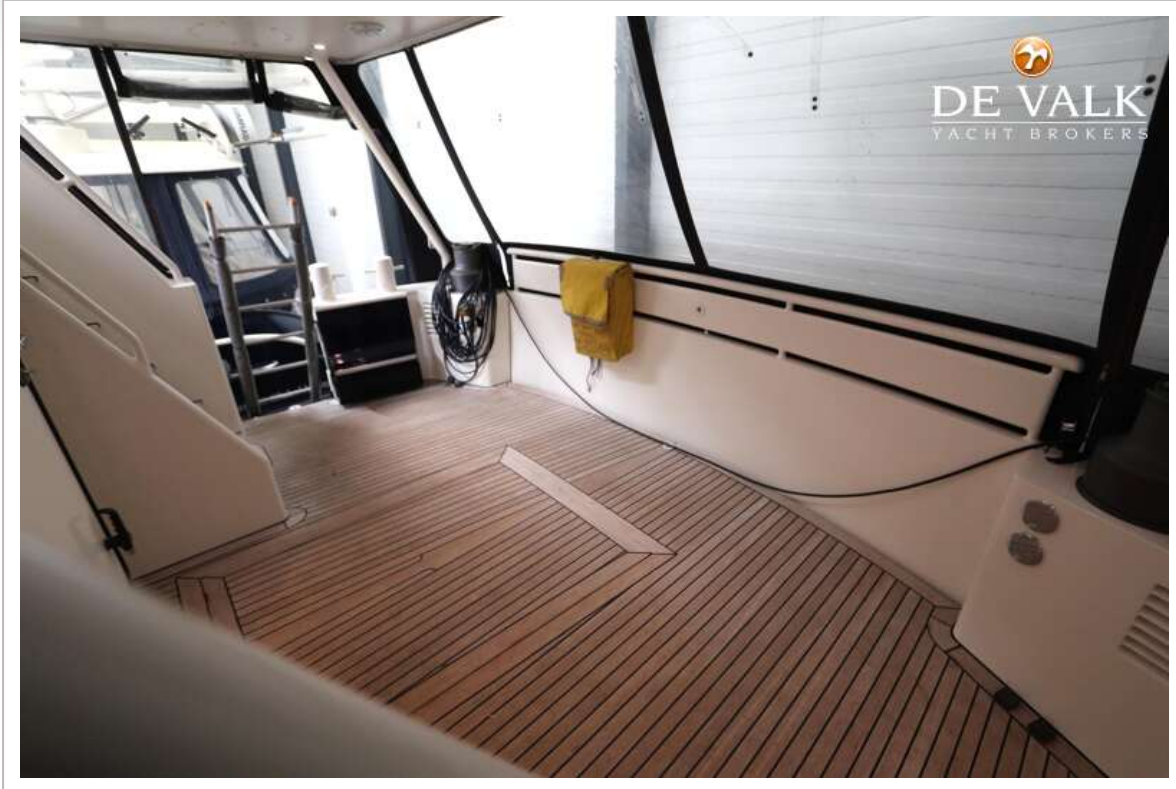




# TRAWLER EXPLORER 60



# TRAWLER EXPLORER 60





# TRAWLER EXPLORER 60

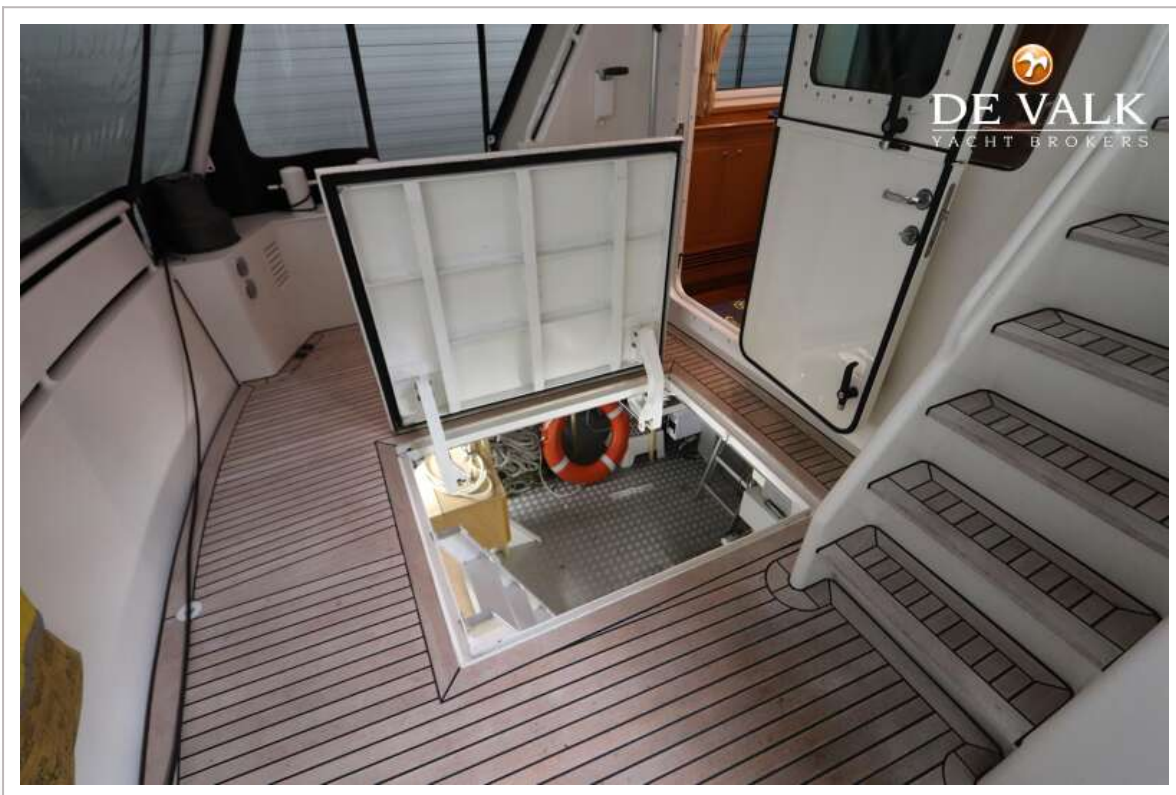
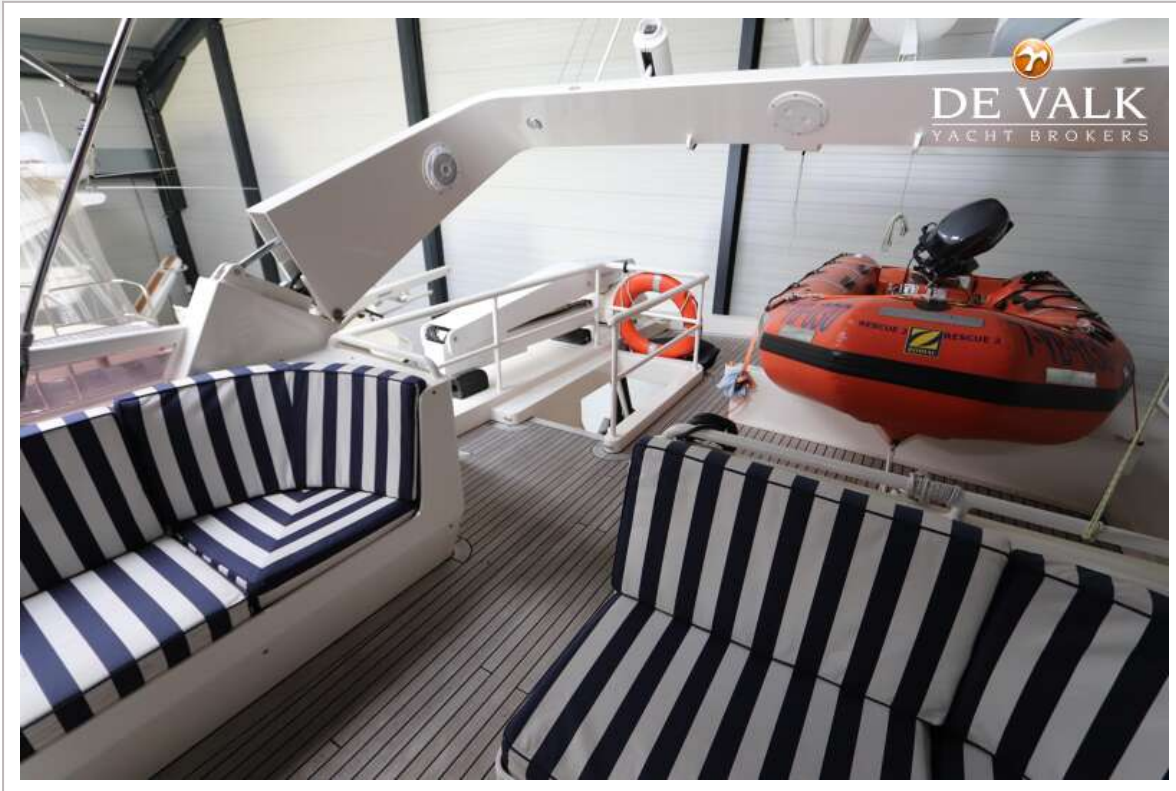




# TRAWLER EXPLORER 60

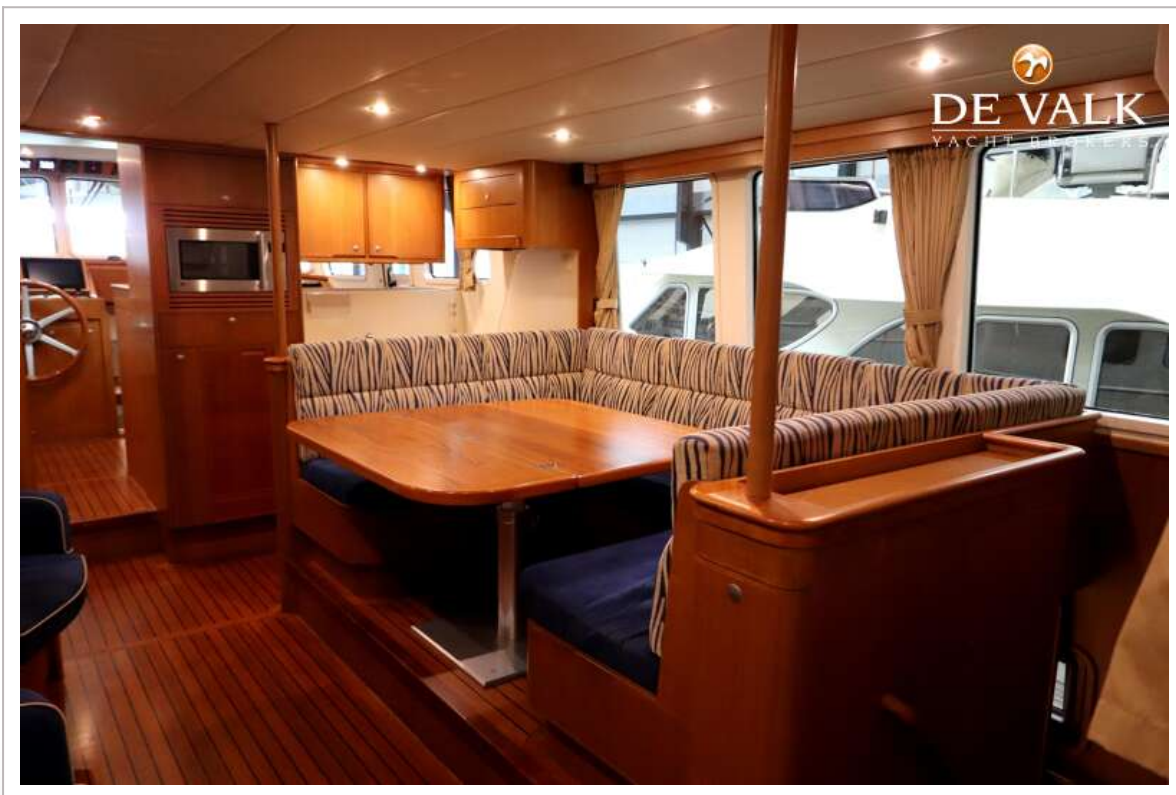


# TRAWLER EXPLORER 60

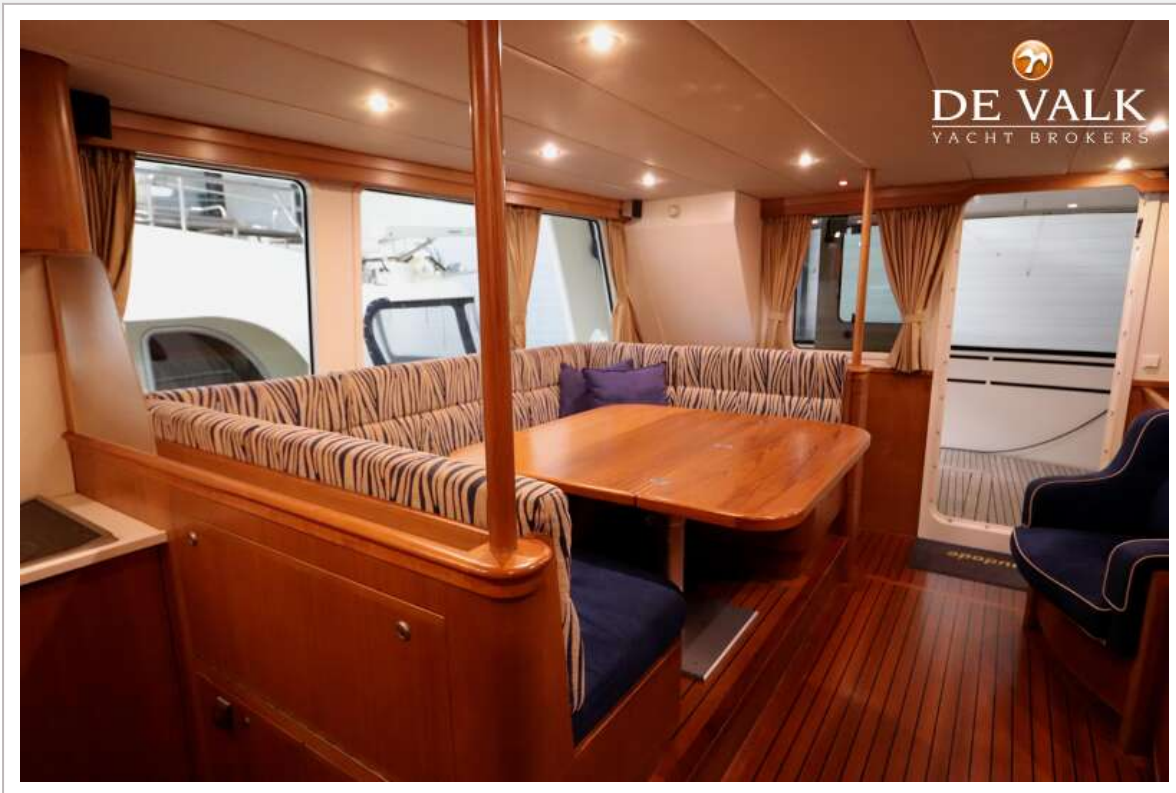




# TRAWLER EXPLORER 60

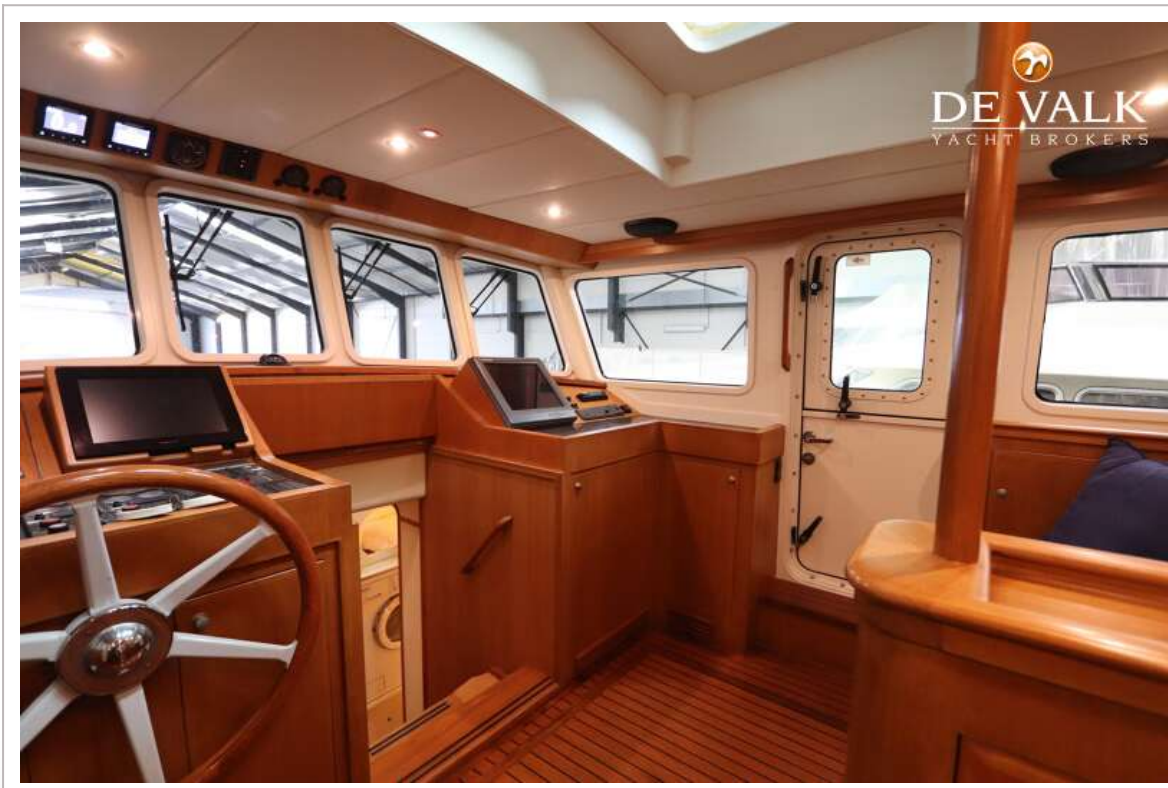
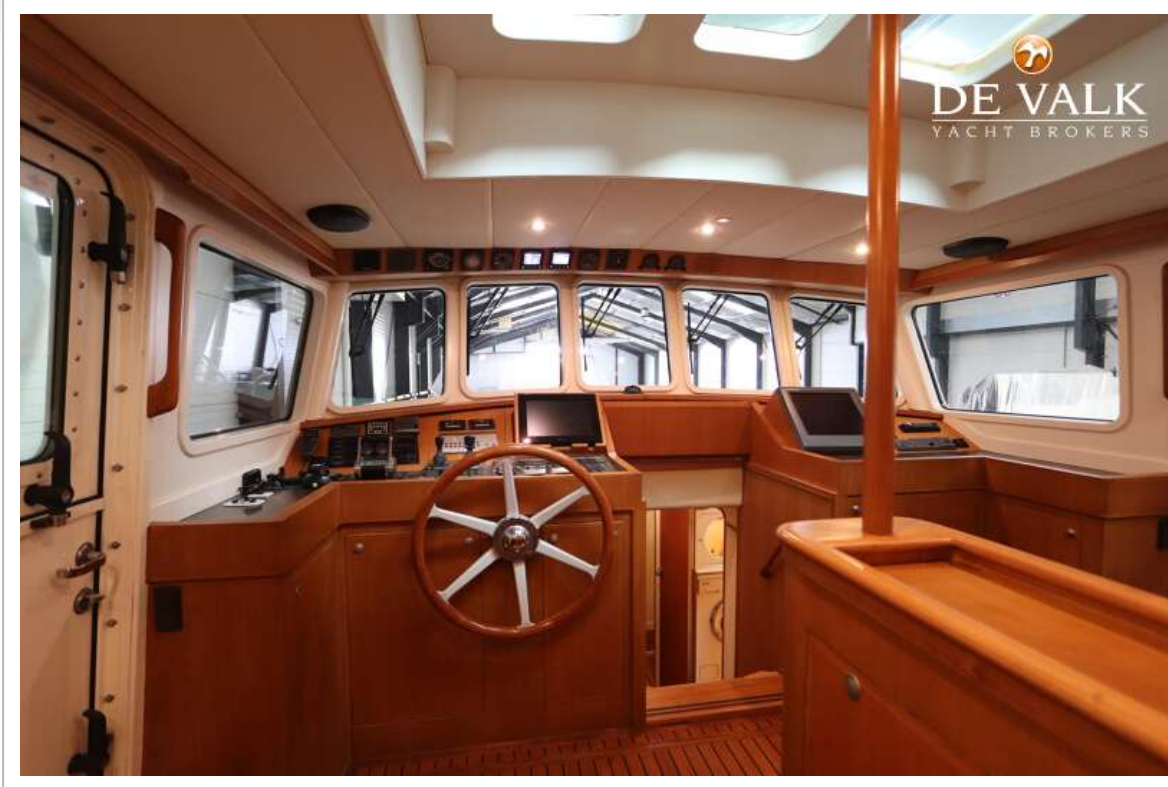


# TRAWLER EXPLORER 60

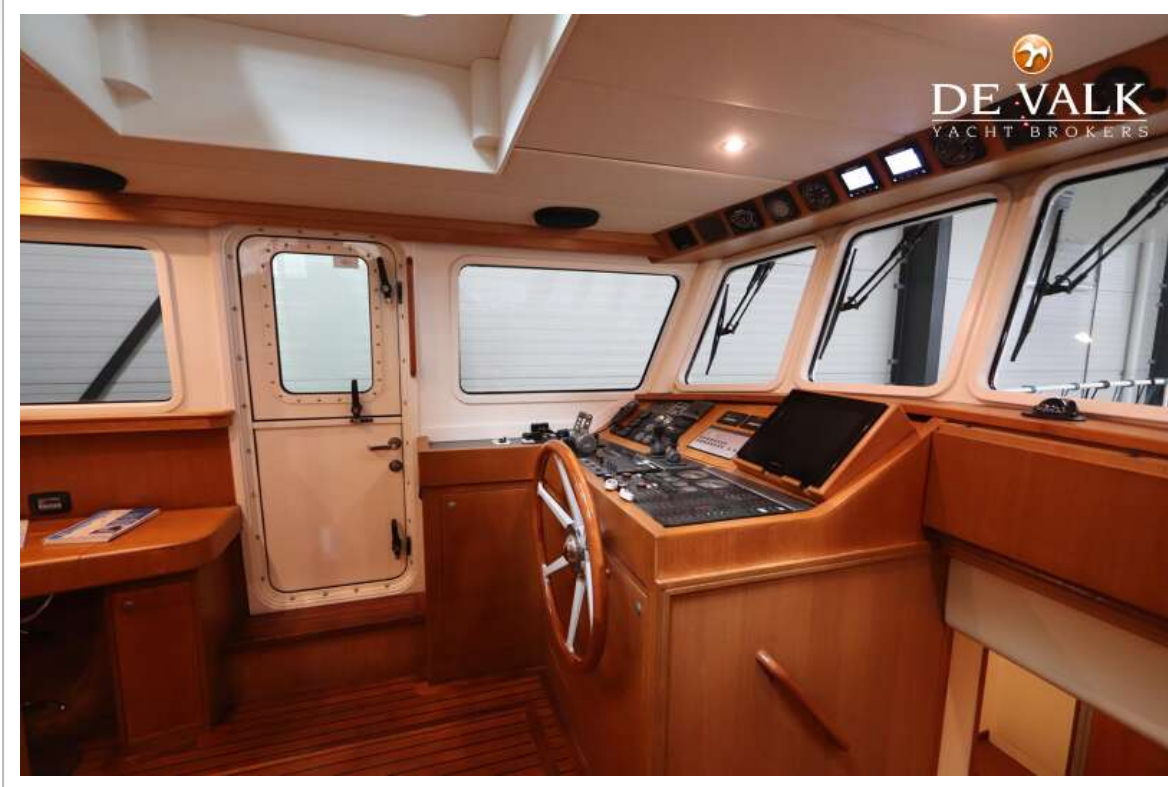




# TRAWLER EXPLORER 60

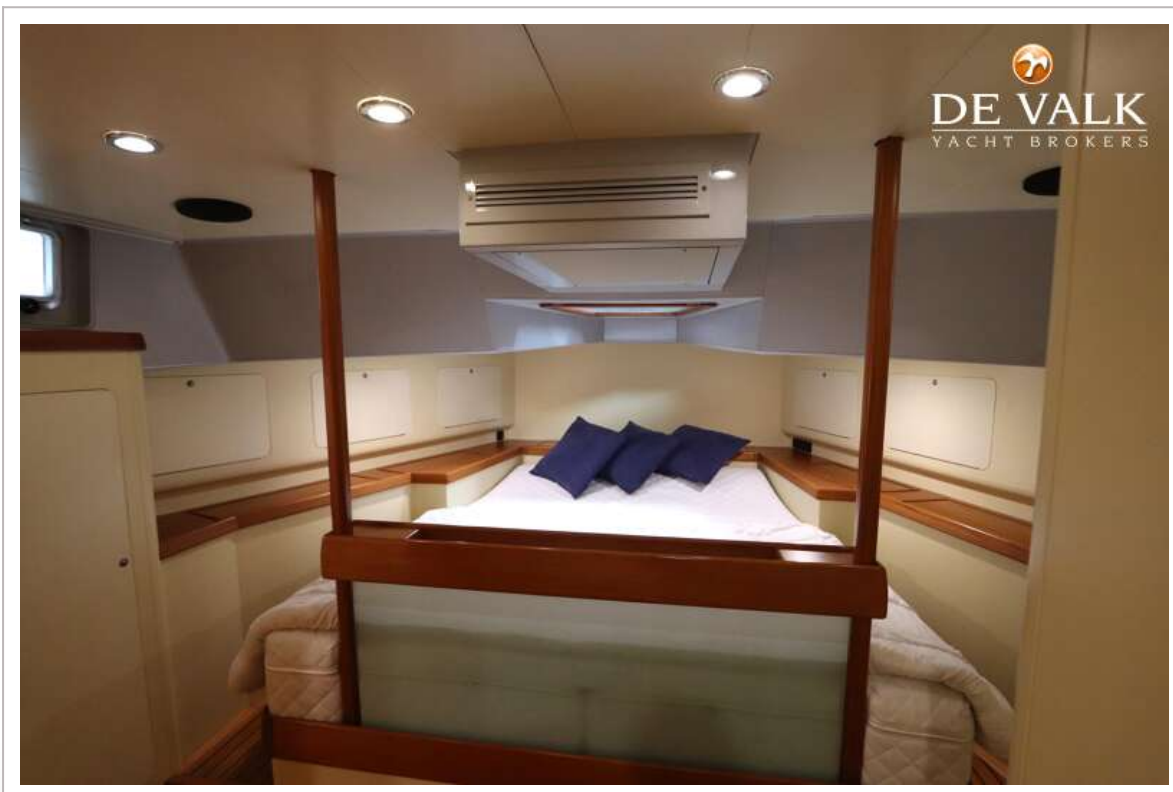


# TRAWLER EXPLORER 60

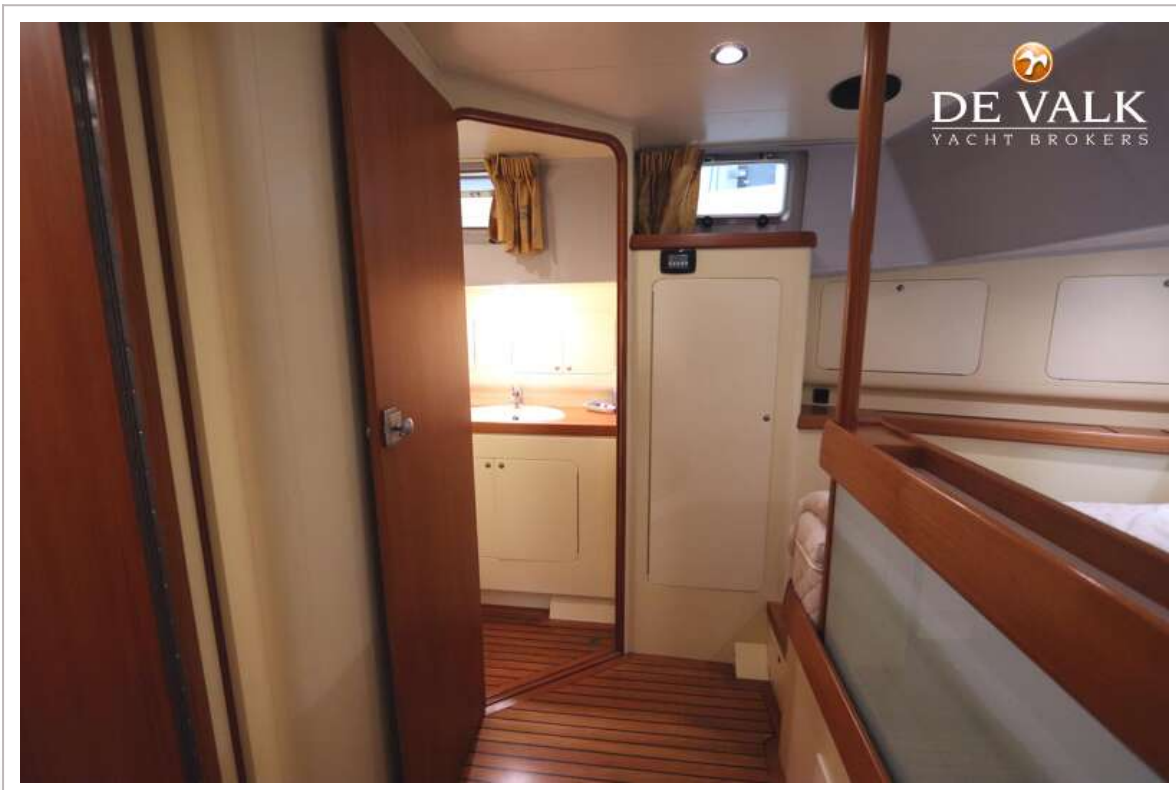




# TRAWLER EXPLORER 60

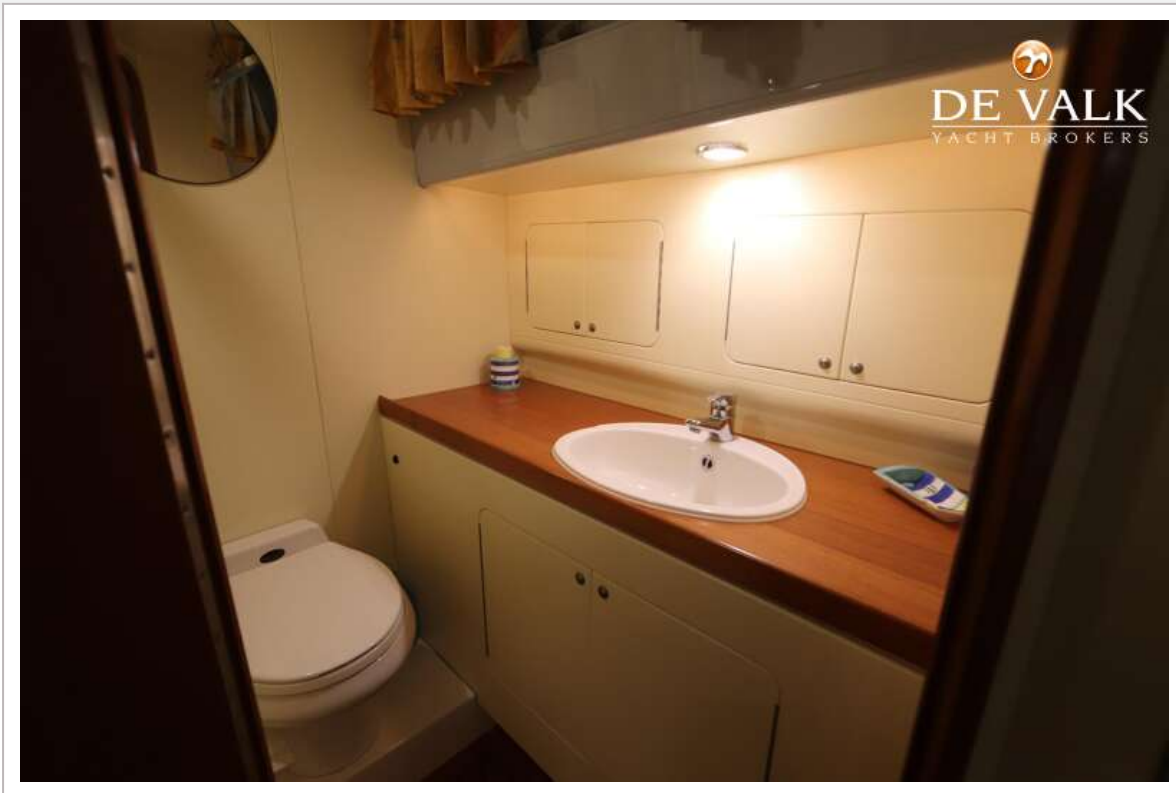


# TRAWLER EXPLORER 60





# TRAWLER EXPLORER 60



# TRAWLER EXPLORER 60

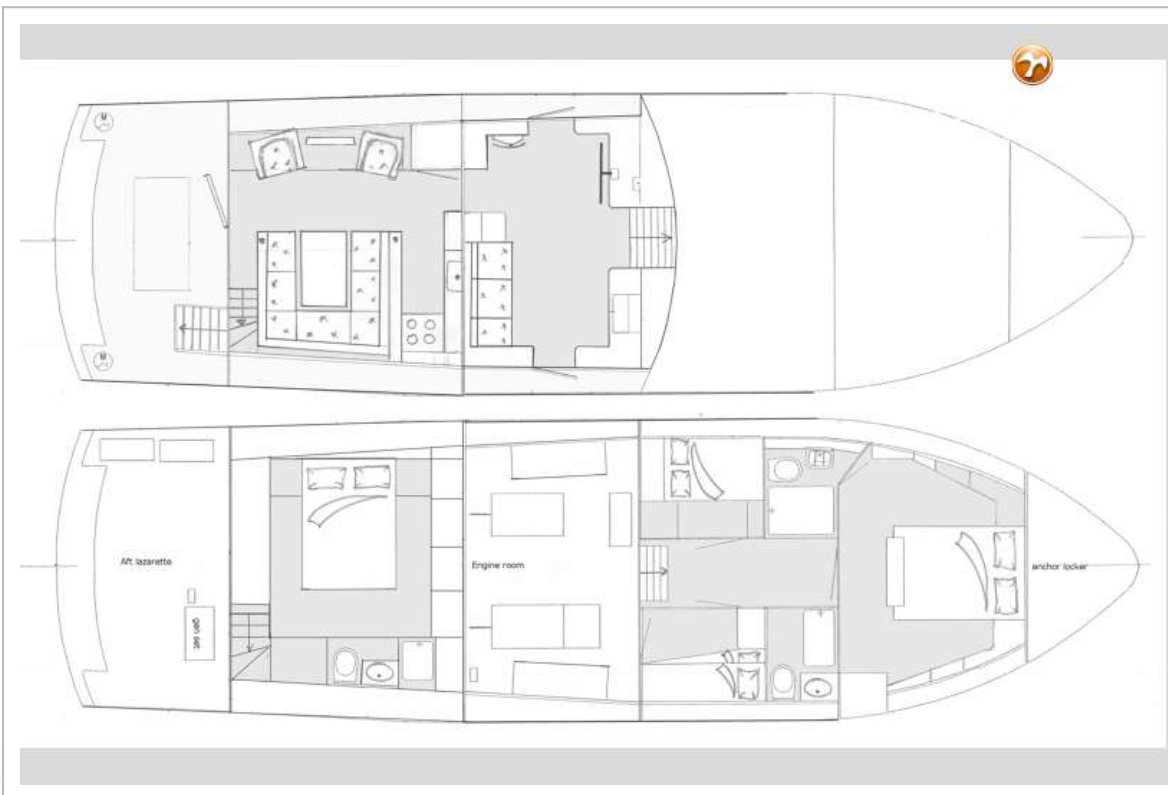


# TRAWLER EXPLORER 60

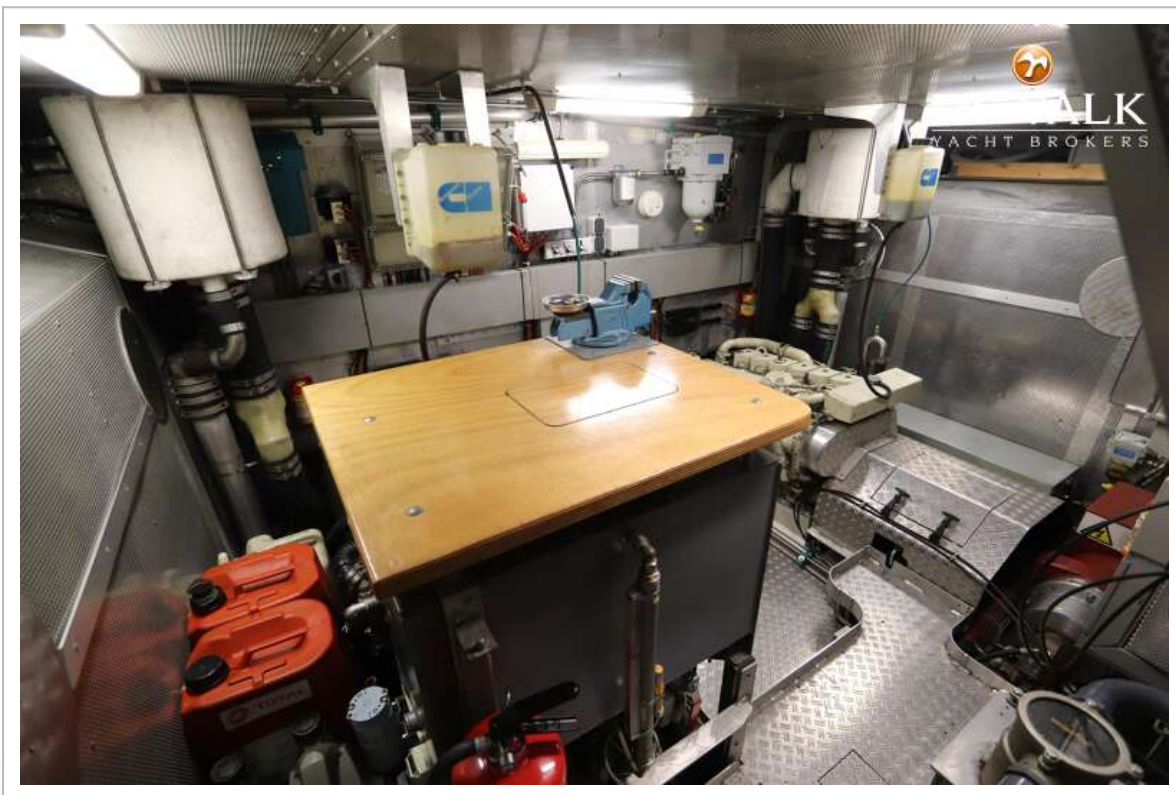
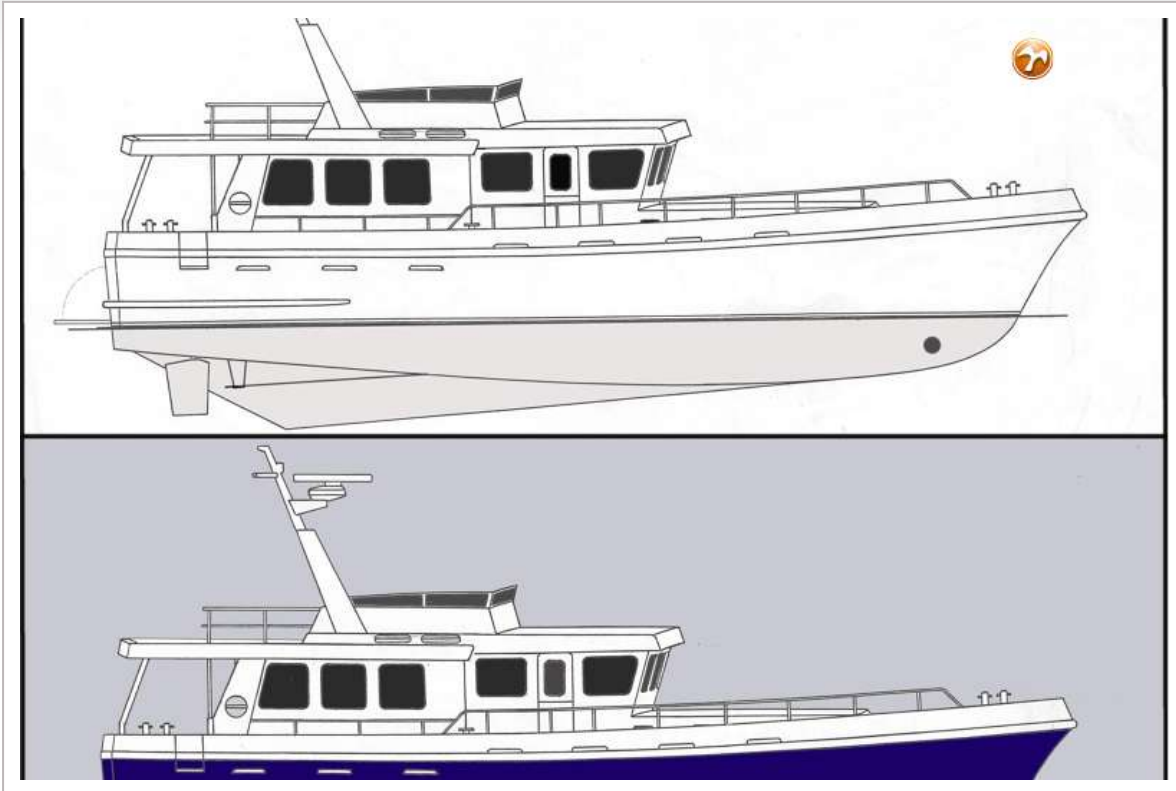




# TRAWLER EXPLORER 60

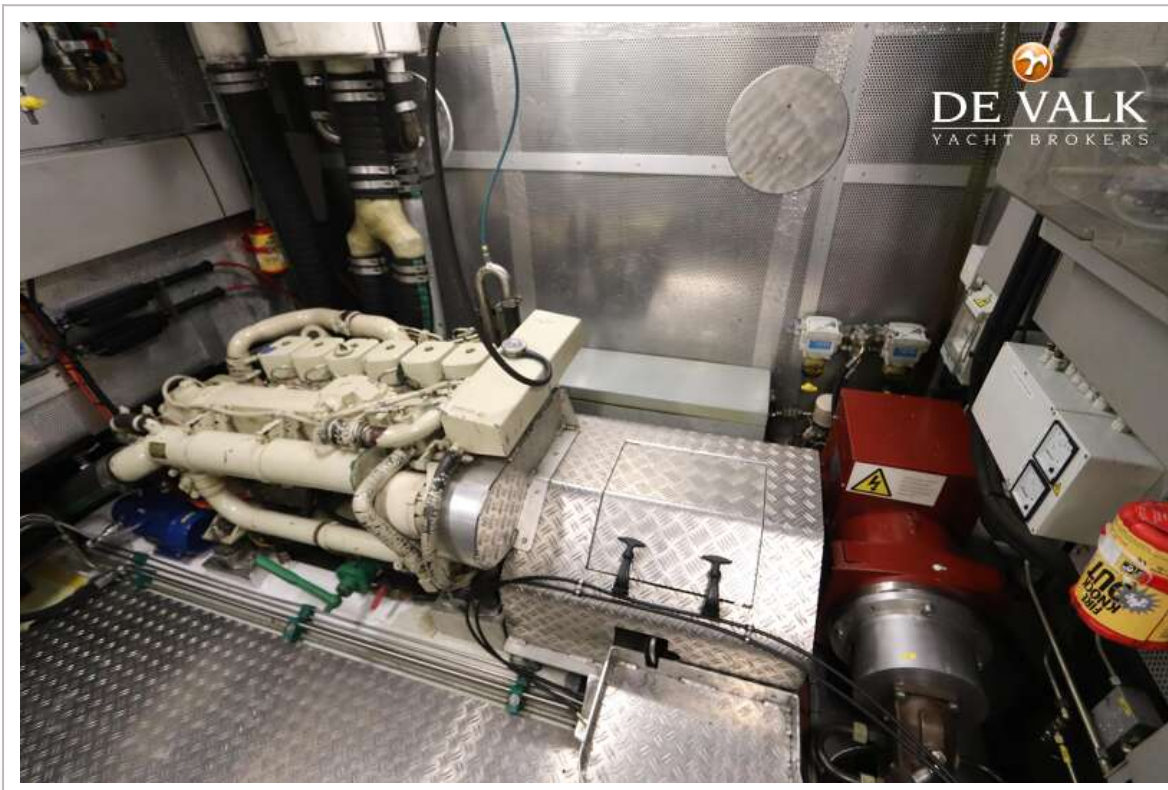


# TRAWLER EXPLORER 60





# TRAWLER EXPLORER 60



# TRAWLER EXPLORER 60

