



DE VALK  
YACHT BROKERS



JONMERI 40



DE VALK  
YACHT BROKERS

## BROKER'S COMMENTS

The Jonmeri 40 is a yacht with a rich classic look, nice lines, well balanced design with nice accommodations below decks, built with love and care that meets the highest quality even to Scandinavian standards. The Jonmeri 40 is also a excellent offshore cruising yacht. She has good stowage space and is a safe and stable yacht for cruising with family and friends. Walking her decks and looking at the details, make you realize this yacht is very well built.

*Henk Sijbranda*

## SPECIFICATIONS

<b>Dimensions</b>	12.10 x 3.85 x 2.08 (m)	<b>Builder</b>	Jonmeri Yachts
<b>Built</b>	1992	<b>Cabins</b>	2
<b>Material</b>	GRP	<b>Berths</b>	6
<b>Engine(s)</b>	1 x Volvo Penta 2003T diesel	<b>Hp/Kw</b>	43.00 (hp), 31.61 (kw)
<b>Asking price</b>	sold (VAT )	<b>Lying</b>	contact Hindeloopen

## CONTACT

<b>Sales office</b>	De Valk Hindeloopen B.V.	<b>Telephone</b>	+31 514 52 40 00
<b>Address</b>	Oosterstrand 1 8713 JS Hindeloopen NL	<b>E-mail</b>	hindeloopen@devalk.nl

## DISCLAIMER

These particulars are given in good faith as supplied but cannot be guaranteed.



## GENERAL

Model	JONMERI 40
Type	sailing yacht
LOA (m)	12,10
LWL (m)	10,00
Beam (m)	3,85
Draft (m)	2,08
Air draft (m)	18,50
Headroom (m)	1,85
Year built	1992
Builder	Jonmeri Yachts
Country	Finland
Designer	Jorma Nyman
Displacement (t)	8,5
Ballast (tonnes)	4
Hull material	GRP
Hull colour	blue
Hull shape	round-bilged
Keel type	fin keel
Superstructure material	GRP
Deck material	GRP
Deck finish	teak
Superstructure deck finish	teak
Cockpit deck finish	teak
Dorades	3x
Window frame	aluminium
Window material	tempered glass
Deckhatch	2x Lewmar
Fuel tank (litre)	stainless steel 2x 140
Freshwater tank (litre)	stainless steel 2x 225
Blackwater tank (litre)	stainless steel 70



Wheel steering	cable steering Solimar with cover
Emergency tiller	yes

## ACCOMMODATION

Cabins	2
Berths	6
Interior	teak
Floor	teak and holly
Open cockpit	2x
Saloon	yes
Headroom saloon (m)	1,90
Heating	diesel ducted hot air Webasto 3900 Evo - 2014
Navigation center	Easy access via aft cockpit
Chart table	yes
Aft Cabin	yes
Galley	yes
Countertop	wood
Sink	stainless steel Double
Cooker	calor gas Techimpex - 3 burner
Oven	In cooker
Fridge	Big fridge - new refrigeration compressor
Hot water system	220V + engine
Water pressure system	electrical
Manual and/or foot pump	yes
Owners cabin	v-bed
Bed length (m)	1,96
Wardrobe	hanging and shelves
Bathroom	shared
Toilet	yes
Toilet system	yes
Wash basin	yes



Shower	yes
Guest cabin 1	twin single
Bed length (m)	2,10+
Wardrobe	shelves

## MACHINERY

No of engines	1
Make	Volvo Penta
Type	2003T
HP	43,00
kW	31,61
Fuel	diesel
Maximum speed (kn)	7
Cruising speed (kn)	6,5
Engine cooling system	freshwater heat exchanger
Drive	shaft
Engine controls	bowden cable
Gearbox	mechanical
Exhaust	watercooled
Propeller type	feathering Maxprop (2011)
Propeller blades	3
Propeller shaft material	stainless steel
Shaft lubrication	water
Manual bilge pump	yes
Electric bilge pump	yes
Electrical installation	12 / 220V
Start battery	1x 105Ah
Service battery	2x 105Ah
Battery monitor	Mastervolt Battery Monitor BTM-I
Battery charger	Mastervolt 12/50 - 3
Shorepower	with cable



## NAVIGATION

Compass	Suunto
Depth sounder	Raymarine ST60 DEPTH
Log	Raymarine ST60 SPEED
Windset	Raymarine ST60+ CH WIND and ST60 WIND
Repeater	Raymarine ST60+ GRAPHIC and Raymarine ST70 Multi-talented displa
VHF	Raymarine
Autopilot	Raymarine ST70
Radar	Raymarine
Radar/GPS/plotter	Raymarine C80
Navtex	Lo-Kata Navtex 1
AIS receiver	Raymarine AIS650 Class B Transceiver
Navigation lights	yes

## RIGGING

Rigging	sloop
Standing rigging	Rod 2007
Brand mast	Isomat
Material mast	aluminium
Spreaders	2 pair
Keel stepped mast	yes
Mainsail	North Sails
Mainsail cover	yes
Battcars	yes
Fully battened mainsail	yes
Genoa I	yes
Genoa II	yes
Genoa furler	Harken
Gennaker	yes
Spinnaker	yes



<b>Stormjib</b>	yes
<b>Reefing System</b>	quick-one-line-reefing
<b>Backstay adjuster</b>	hydraulic Sailtec
<b>Boomvang</b>	gasspring
<b>Primary sheet winch</b>	2x Harken 32 two speed
<b>Genoa sheetwinches</b>	2x Harken 64 two speed
<b>Halyard winches</b>	2x Harken 42 two speed and 4x Harken 32 two speed
<b>Spinnaker winch</b>	2x Harken two speed
<b>Reefing winch</b>	1x Harken 18
<b>Spi-pole</b>	aluminium 2x
<b>Jockey-pole</b>	aluminium 1x
<b>Isolated backstay</b>	yes







# JONMERI 40







# JONMERI 40

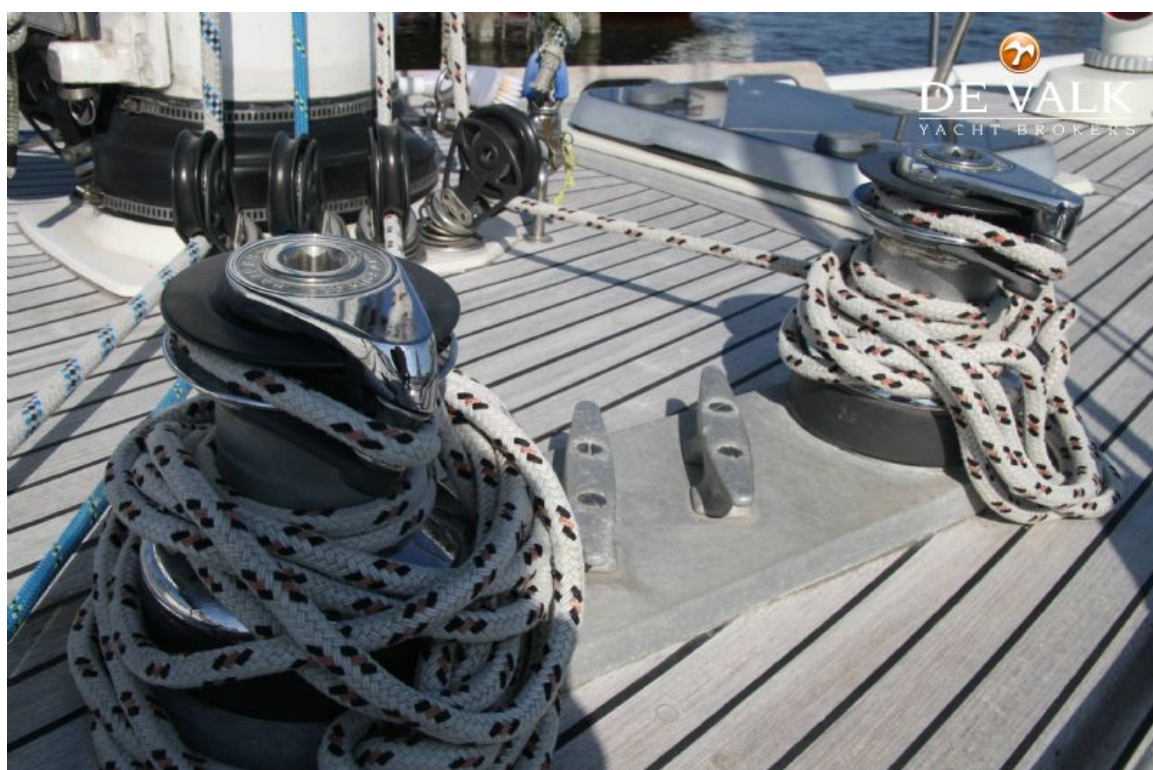


# JONMERI 40



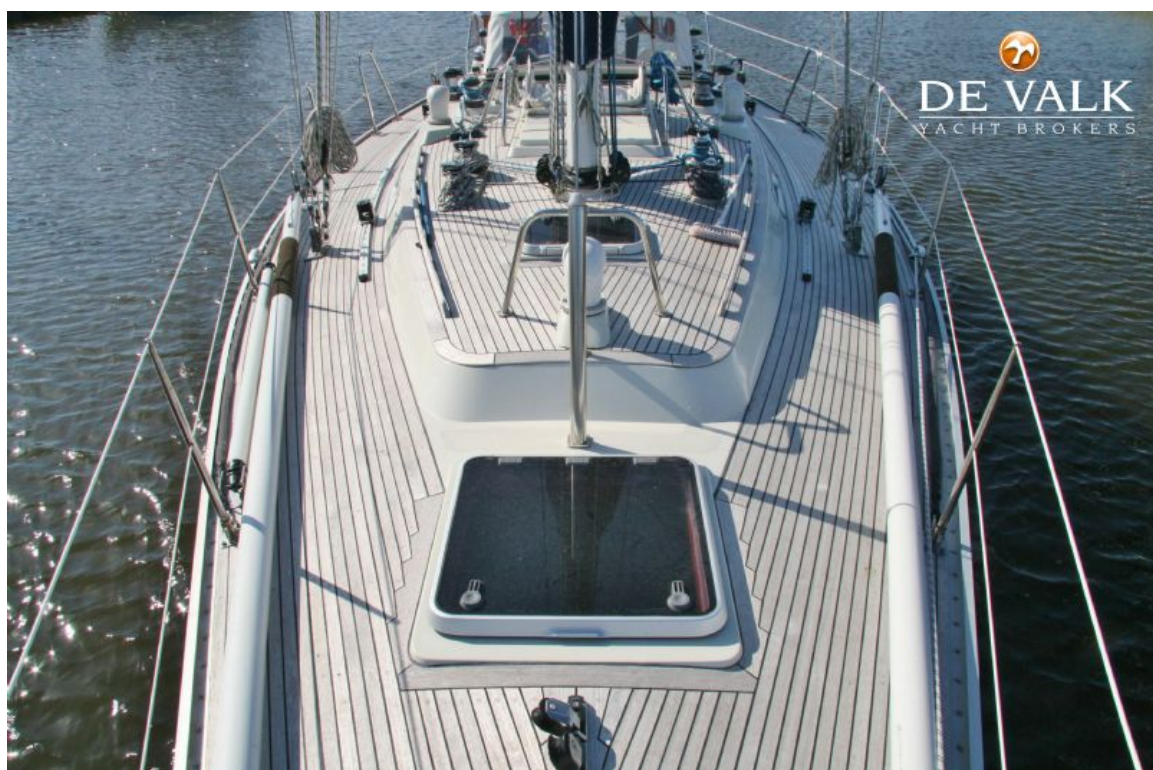








# JONMERI 40







# JONMERI 40



# JONMERI 40

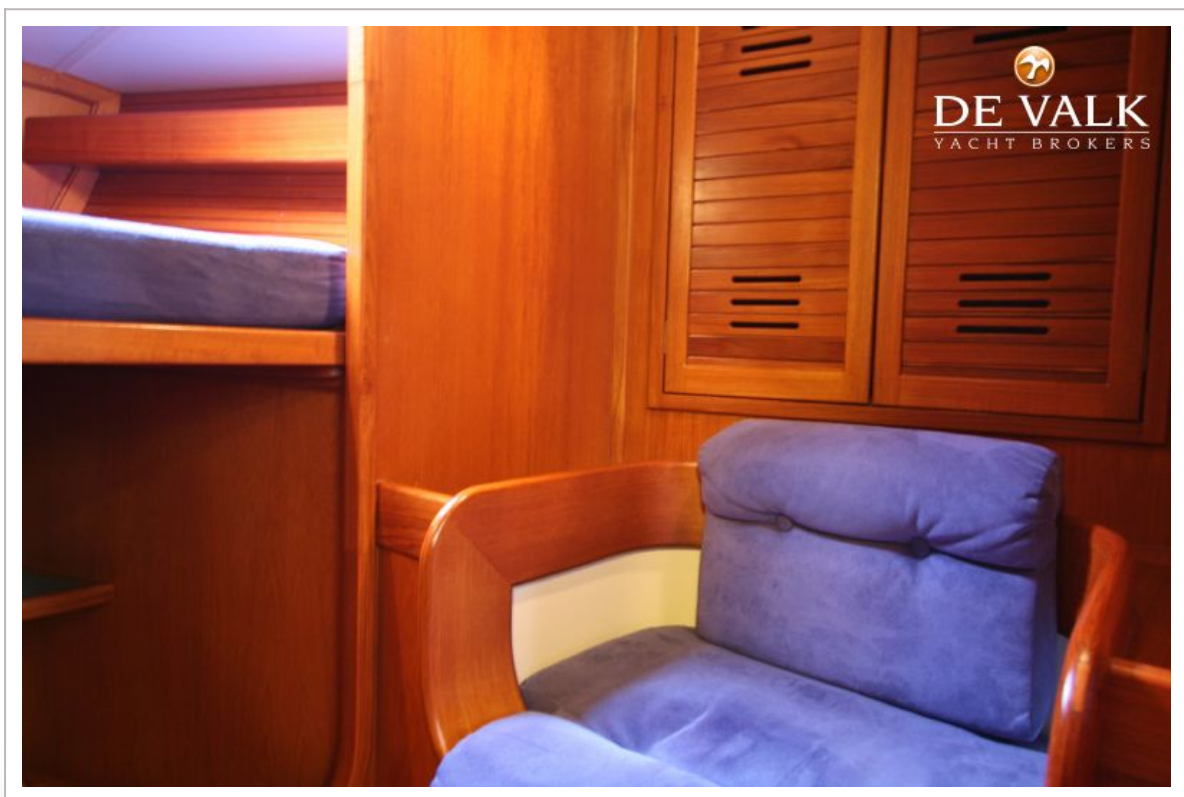
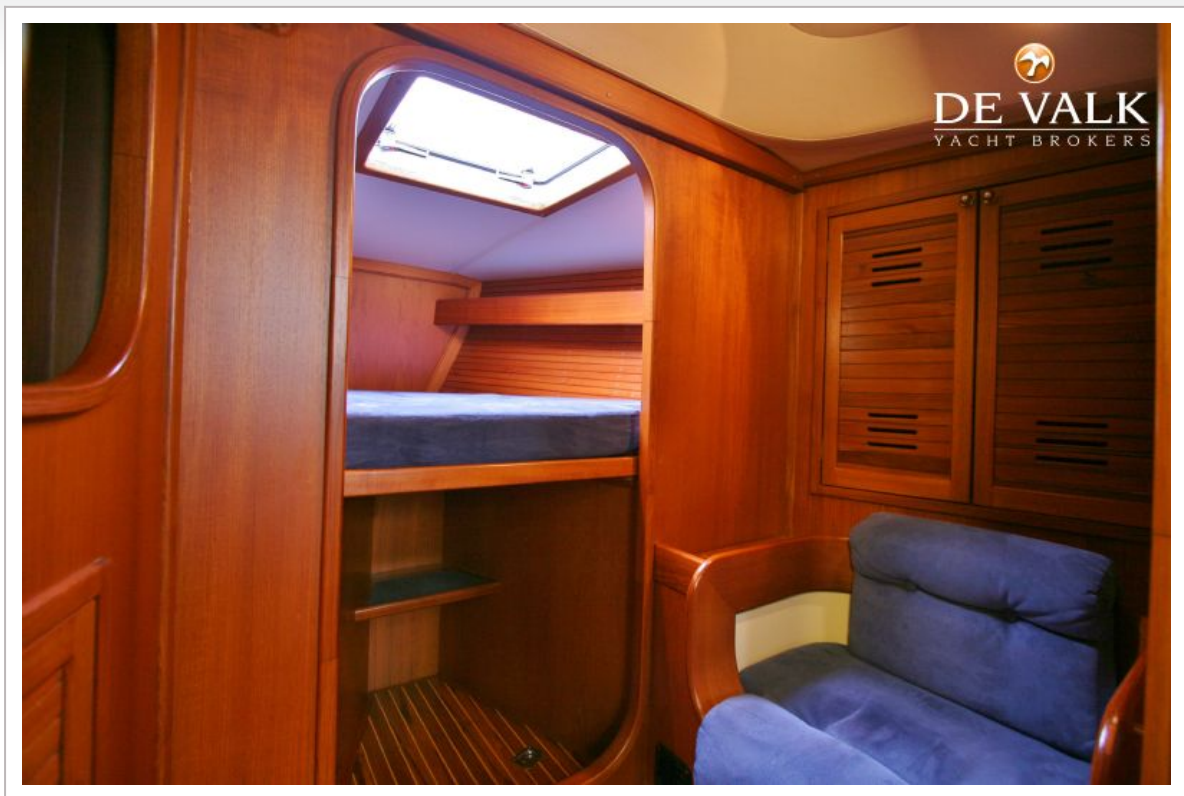




# JONMERI 40



# JONMERI 40

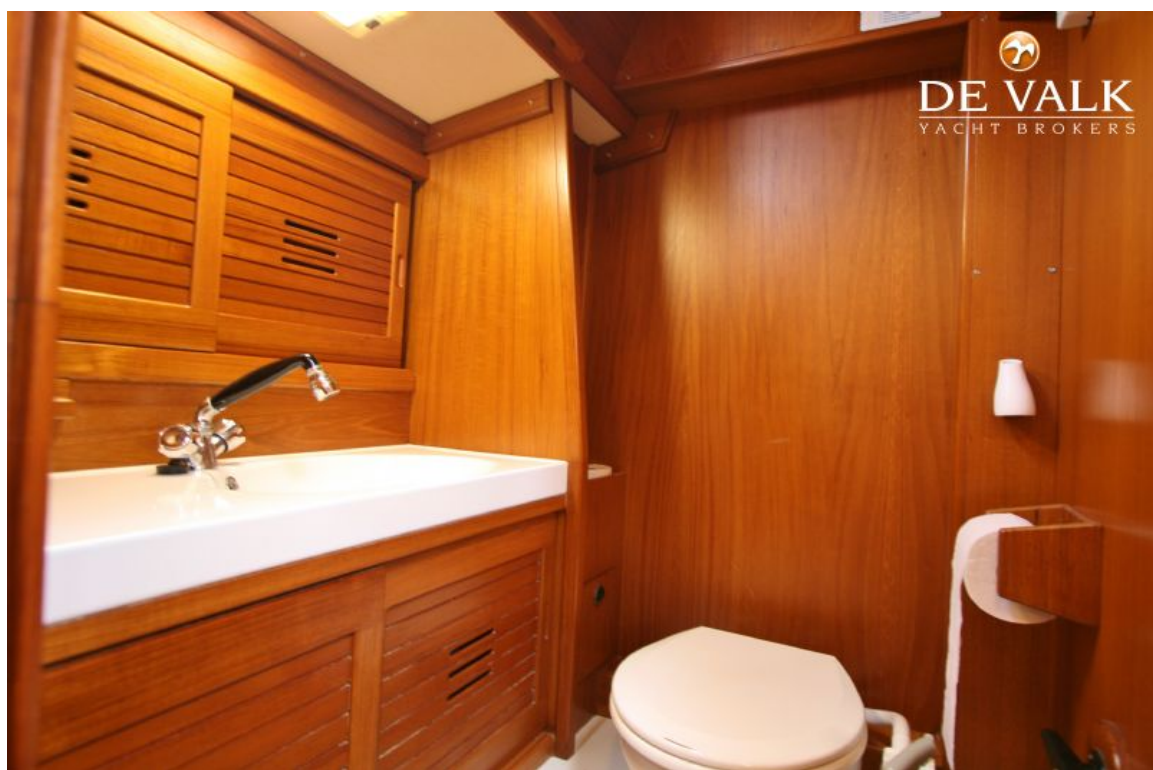




# JONMERI 40

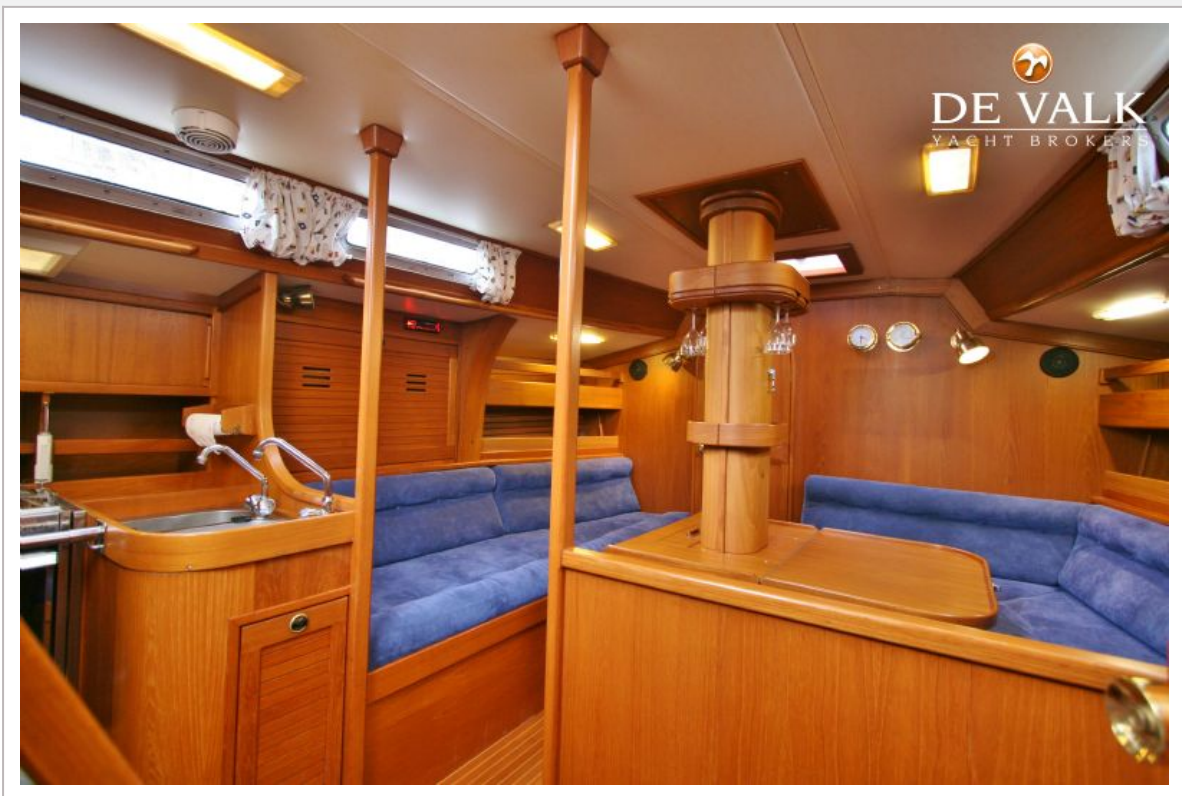


## JONMERI 40





# JONMERI 40

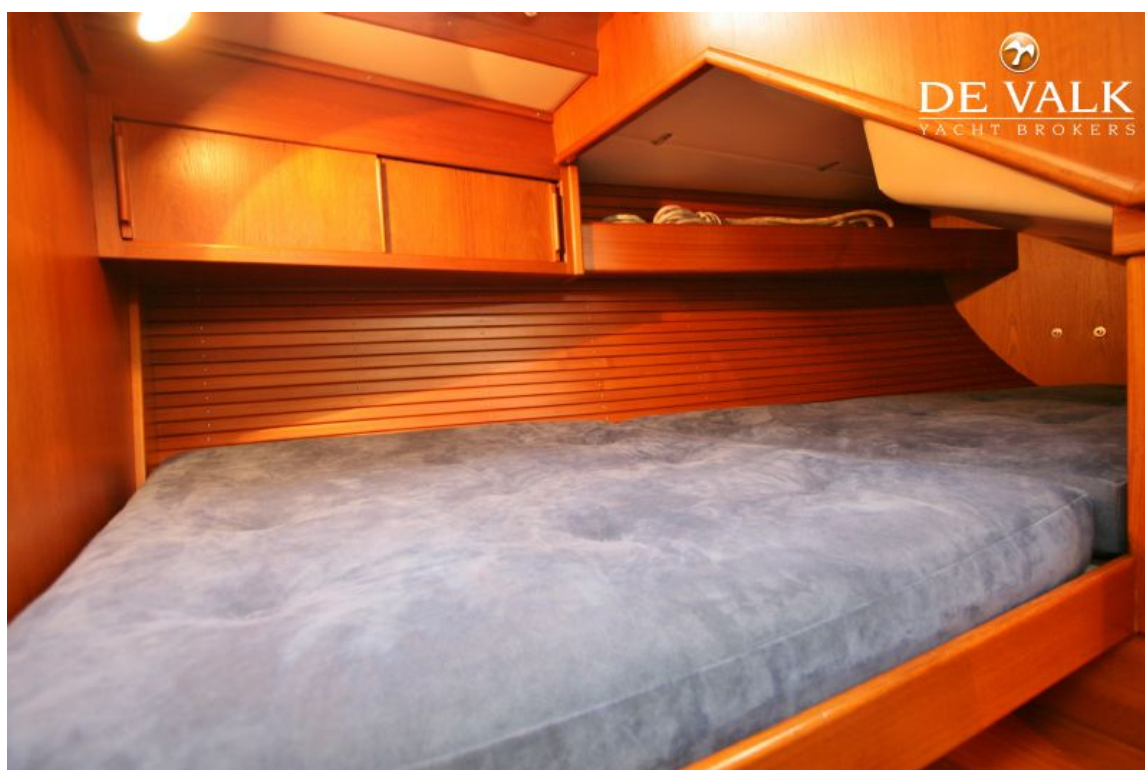


# JONMERI 40





# JONMERI 40



## JONMERI 40

