



DE VALK
YACHT BROKERS



NORTHERN MARINE 78



DE VALK
YACHT BROKERS

BROKER'S COMMENTS

Beautiful North West American craftsmanship. Sturdy and reliable world cruiser capable of sailing 4000 miles without refueling. Cockpit, entrance, saloon, galley, head and master bedroom with ensuite facilities all at deck level. She will be auctioned on January 31th 2018 in cooperation with Schipveiling and BVA Auctions. For further details and viewing days go to: <https://en.bva-auctions.com/auction/index/29776> starting price of the auction EUR. 250.000, offers can be made from January 24th on the website of BVA..

Hans Visser

SPECIFICATIONS

Dimensions	23.50 x 6.60 x 2.00 (m)	Builder	Northern Marine
Built	2003	Cabins	4
Material	GRP	Berths	9
Engine(s)	1 x Cummins KT19M Diesel	Hp/Kw	600.00 (hp), 441.00 (kw)
Asking price	sold (VAT)	Lying	elsewhere / Not at sales office

CONTACT

Sales office	De Valk Loosdrecht	Telephone	+31 35 582 90 30
Address	't Breukeleveense Meentje 6 1231 LM Loosdrecht / Wijdmeren The Netherlands	E-mail	loosdrecht@devalk.nl

DISCLAIMER

These particulars are given in good faith as supplied but cannot be guaranteed.



GENERAL

Model	NORTHERN MARINE 78
Type	motor yacht
LOA (m)	23,50
Beam (m)	6,60
Draft (m)	2,00
Headroom (m)	2,20
Year built	2003
Launched	2003
Builder	Northern Marine
Country	U.S.A.
Designer	Northern marine
Displacement (t)	130
CE norm	NA
Hull material	GRP
Hull colour	white
Hull shape	round-bilged
Keel type	box keel
Superstructure material	GRP
Rubbing strake	stainless steel
Deck material	GRP
Deck finish	anti-slip paint
Superstructure deck finish	anti-slip paint
Cockpit deck finish	anti-slip paint
Dorades	yes
Window frame	aluminium
Window material	yes
Deckhatch	Aluminum
Portholes	aluminium 16
Insulation	yes
Flybridge	yes



Flybridge cover	yes
Mast can be lowered	hydraulic Reducing overall height with approx. 4 mtr.
Fuel tank (litre)	GRP Total approx. 17,725 liters in 5 tanks
Fuel tank 2 (litre)	In total 4 bulk tanks and 1 daytank
Level indicator (fuel tank)	Hart Tank tender + glasses
Fuel daytank (litre)	GRP 470
Level indicator (daytank)	Hart tank tender
Freshwater tank (litre)	GRP 3780
Level indicator (freshwater)	Hart Tank tender
Blackwater tank (litre)	GRP 660
Level indicator (blackwater)	Hart Tank Tender
Blackwater tank extraction	deck extraction + pump 2 independant pumps for both tanks and switchover for redundancy
Greywater tank (litre)	GRP 470
Level indicator (greywater)	Hart Tank Tender
Wheel steering	hydraulic
Inside helm position	yes
Outside helm position	3 docking stations one on each wing and one in the cockpit t(5)
Flybridge helm position	hydraulic
More info on hull	The length overall according CE regulations is 24,02 M.

ACCOMMODATION

Cabins	4
Berths	9
Interior	mahogany Award winning traditional interior with high gloss finish
Layout	Owner
Floor	carpet
Aft deck	yes
Pilot house	With wing doors
Deck saloon	With side and aft entrance
Headroom saloon (m)	2,20



Heating	central hot water Hurricane over airco air handlers
Air-conditioning	reverse cycle airco HVAC
Navigation center	In Pilothouse
Chart table	In pilot house
Dining room	In the deck salon
Opening door to cockpit	yes
Opening door to aft deck	yes
Galley	U shaped fully equiped
Countertop	corian
Sink	Corian Double sink
Cooker	electric Viking - 4 burner
Oven	Viking 100
Extractor	Built in
Microwave/oven combi	Viking 70 cm
Fridge	Viking with Freezer drawers in Galley (3 ft wide)
Freezer	Viking drawers in Laundry with refrigerator on top
Hot water system	220V + engine 2x 100 liter boiler
Water pressure system	electrical Headhunter pump with 2nd backup pump
Dishwasher	Viking
Kettle	yes
Crockery	Full for 6
Waste compactor	Viking
Owners cabin	French bed On deck level
Bed length (m)	King size bed 200 x 200
Wardrobe	walk-in closet Walk in closet
Bathroom	en suite
Toilet	en suite
Toilet system	electric Head Hunter
Wash basin	in the bathroom
Shower	en suite
Bath tub	en suite
Extra info	Bathroom with his and hers mirrored each with own entrance



Guest cabin 1	double bed Vip Cabin Port
Bed length (m)	King size bed 200 x 200
Wardrobe	hanging/drawers/shelves
Bathroom	en suite
Toilet	en suite
Toilet system	electric Head Hunter
Wash basin	in the bathroom
Shower	en suite
Guest cabin 2	double bed Vip Cabin Starboard
Bed length (m)	King size bed 200 x 200
Wardrobe	hanging/drawers/shelves
Bathroom	en suite
Toilet	en suite Head Hunter
Toilet system	electric
Wash basin	in the bathroom
Shower	en suite
Extra info	Starboard vip head gives acces to tankroom and bulbous bow
Guest cabin 3	twin single Can be used as crew cabin
Bed length (m)	100 x 200
Wardrobe	hanging/drawers/shelves
Toilet	en suite
Toilet system	electric Headhunter
Wash basin	in the bathroom
Shower	en suite
Extra info	Each cabin has full ensuite
Extra info	Laundry room port aft in front of engine room
Extra info	Dayhead at salon level
Washing machine/dryer combi	220 V 50 Hz in Laundry room
Ironing facilities	In Laundry room
Central vacuum cleaner	Not used since 2008
Flybridge	yes
Wet bar	On the aft deck



Extra info

BBQ on the aft deck

Extra info

Dinghy petrol fuel tank for refueling on expedition (400 liter)

MACHINERY

No of engines

1

Make

Cummins

Type

KT19M

HP

600,00

kW

441,00

Fuel

diesel

Year installed

2003

Maximum speed (kn)

12

Cruising speed (kn)

8,5

Consumption (l/hr)

40 liter/h @ 9 knots

Range (nm)

4250 @ 1050rpm

Engine hours

3000

Engine cooling system

freshwater heat exchanger

Drive

shaft

Shaft seal

Dripless

Engine controls

electrical 5 helm stations/docking stations

Gearbox

hydraulic ZF 4:1

Secondary engine

Cummins Pony engine for hydraulics with chaindrive
homersystem

Engine controls

pneumatic

Bowthruster

hydraulic 100hp

Sternthruster

hydraulic 55hp

Exhaust

watercooled

Thrust bearing

yes

Propeller type

fixed

Propeller blades

5

Propeller shaft material

stainless steel 5" Custom shaft



Shaft lubrication	water
Electric bilge pump	5 electric bilge pumps one for each section and emergency engine
Bilge alarm	yes
Electrical installation	12&24 V DC and 110/220/240/380/400 AC 50 and 60 Hz
Generator	Onan 21.5 kw 110volt @ 60Hz
Running hours generator	Apr. 7500 hours completer rebuilt @ 5000 hours
Generator 2	Onan 21.5 kw / 110volt @ 60 Hz + night genset 9 KW @ 110V 60Hz
Running hours generator 2	2nd 21.5 7500 hours complete rebuilt @ 5000 hours
Batteries	10 x 8DL maintenance free for all (need replacement)
Start battery	2 x 12V 210Amp for engine and all generators incl. crossover
Service battery	2 x 4x255 amp 12 volt AMG service groups with crossover
Generator battery	On start battery main engine
Battery monitor	yes
Battery charger	Newmar 24V and 12V backup battery chargers
Inverter	2x independent 1100 Watt 110V for navigation and computers
Battery charger/inverter	2x 4000 watt 110V ac charger/ inverter 24volt 140AH
Diode battery combiners	Atseashore power converter anything in, 2 fase 110 60 Hz on boa
Shorepower	with cable 5 including 3 2 phase 50 Amp 110 VI glendenning cablemasters
Insulation transformer	Iso Boost 1000 for USA shorepower
Watermaker	60 gph (needs service)
Stabilizers	fin Trac stabilizers running on 2 pto pumps on main engine
Extra info	ABT hydraulic System with 3 pumps, main engine, auxillery and EI
Extra info	Elaborate fuel transfer system and fuel polishing system
Extra info	Oil change system with new and waste oil tanks on board

NAVIGATION

Compass	Magnetic compass
---------	------------------



Electric compass	Gyro compasses for the dual Simrad AP20 hydraulic autopilots
Depth sounder	Simrad IS15 information system with repeaters
Forw. looking depth sounder	Furuno forward looking echo sounder with tracking
Log	Simrad IS15 information system with repeaters
Windset	Simrad IS15 information system with repeaters
Repeater	On the fly bridge
Fish finder	Furuno
VHF	3 x independent I-com 127 Vhf 2 in pilothouse and 1 on fly
VHF handheld	Needs new battery
Autopilot	2x fully independant and redundant Simrad AP20
Rudder angle indicator	Simrad
Radar	2x Furuno 96 mile radars with open scanner 1x simrad stand alone
GPS	3 x furuno gp 31 GPS
Plotter	Nobeltec navigation computer with second backup computer
Radar/plotter	2 interchangeable flatscreens on flybridge
Radar/GPS/plotter	5 flatscreen interchangeable screens in pilothouse
Weather receiver	yes
Wifi antenna	With G3 modem router
Electronic chart(s)	Nobeltec worldwide with dongle (needs update)
AIS receiver	Furuno AIS integrated on the Nobeltec navigation computer
AIS transponder	Furuno AIS integrated on the Nobeltec navigation computer
Personal MOB transmitter	yes
Camera	2x Elbex in engineroom and aft deck (need service)
Navigation lights	Fully compliant
Searchlight	2 x 30 cm remote controlled 360 degrees Carlisle & Fish
Loudhailer	yes
Extra info	Por and starboard AC/DC distribution with changeover/backup

EQUIPMENT

Fixed windscreen	5 x
------------------	-----



Cockpit cover	For cushions
Sun awning	For aft cockpit
Cockpit cushions	For all seats outside
Cockpit table	On aft deck
Bathing platform	yes
Boarding ladder	stainless steel
Transom door	yes
Gangway	Manual
Deck shower	On aft deck
Anchor	Fortress Stainless steel 200 kg.
Anchor chain	200 meter - 15mm
Anchor 2	Fortress
Anchor chain	80 meter of heavy duty line
Windlass	hydraulic Muir 6000
Capstan	Electric on foredeck
Windlass aft	electrical On bathing platform
Deck wash	yes
Dinghy	rigid inflatable
Outboard	90hp
Deck crane	hydraulic EZ 3500EX Nautical structures heavy duty hydraulic crane on deck
Sea railing	stainless steel
Grab rail (superstructure)	yes
Railing side opening gates	yes
Pushpit	yes
Pulpit	yes
Life raft	container
Life raft (pers)	12
Last life raft survey	2010
Lifejackets	Several hard body
Safety harness	Several
Lifebuoy	yes



Danbuoy	yes
Rope cutter	yes
Wiper	5 Exalto windshield wipers
Horn	air pressure
Fenders	Several
Mooring lines	Ample
Spare parts	Ample
Tools	Ample
Alarm system	yes
TV	Full entertainment set with plasma tv in all cabins including dvd, cd, radio and option for direct tv. Large wide screen tv with full entertainment set in the salon Full entertainment in each cabin Plus salon, Flybridge and pilot
TracVision ball	Direct TV sat tracker (no card)
Radio-cd player	6 x
DVD player	4 x
Surround Sound System	In salon
Cockpit speakers	yes
Speakers in salon	yes
Speakers in cabin	yes
Clock - barometer	yes
Fire extinguisher	Need service
Auto extinguisher system	yes

RIGGING

Rigging	Aluminium Mast for all antennas, lights and misc.
Mast lowering system	Hydraulic






DE VALK
YACHT BROKERS



BROKERAGE | CHARTER | BERTHS | FINANCE | INSURANCE | YACHT MANAGEMENT


DE VALK
YACHT BROKERS



**This yacht will be auctioned,
for further details please visit www.devalk.nl**

**Dit schip zal worden geveild,
voor meer informatie gaat u naar www.devalk.nl**

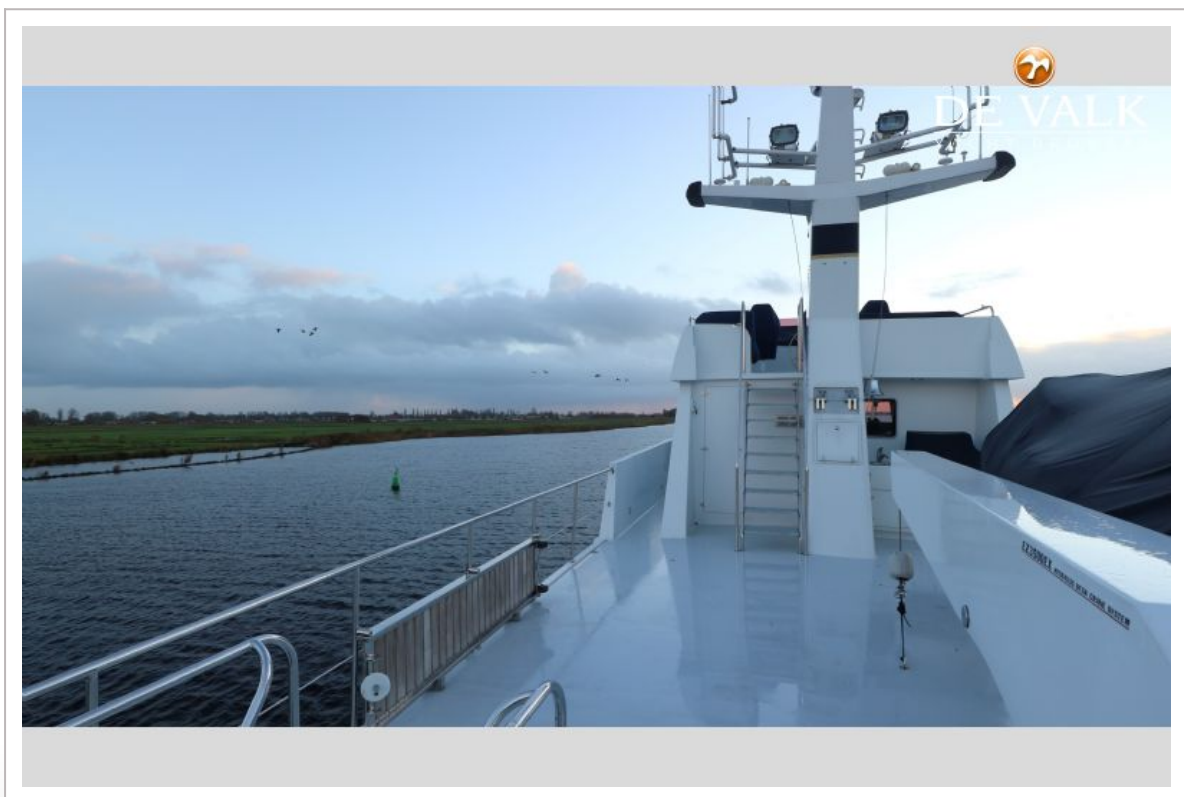
**Dieses Schiff wird versteigert,
für weitere informationen besuchen Sie www.devalk.nl**

WWW.DEVALK.NL

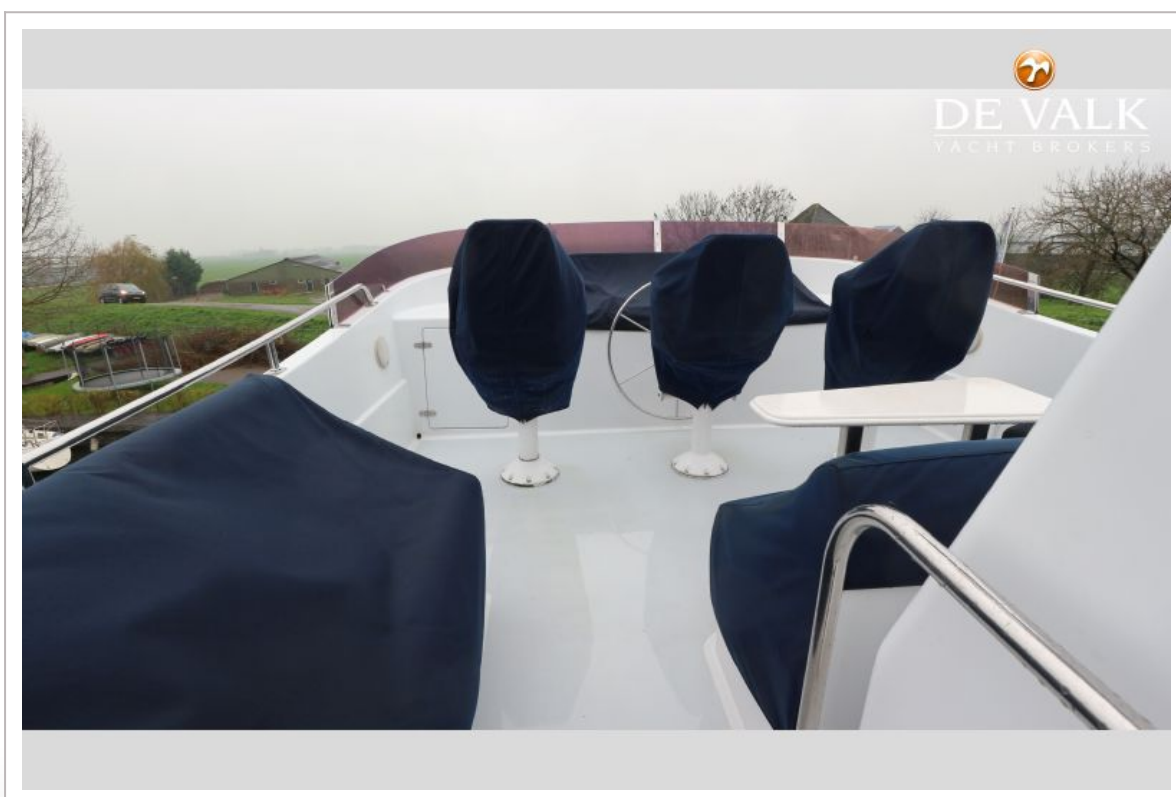

DE VALK
YACHT BROKERS



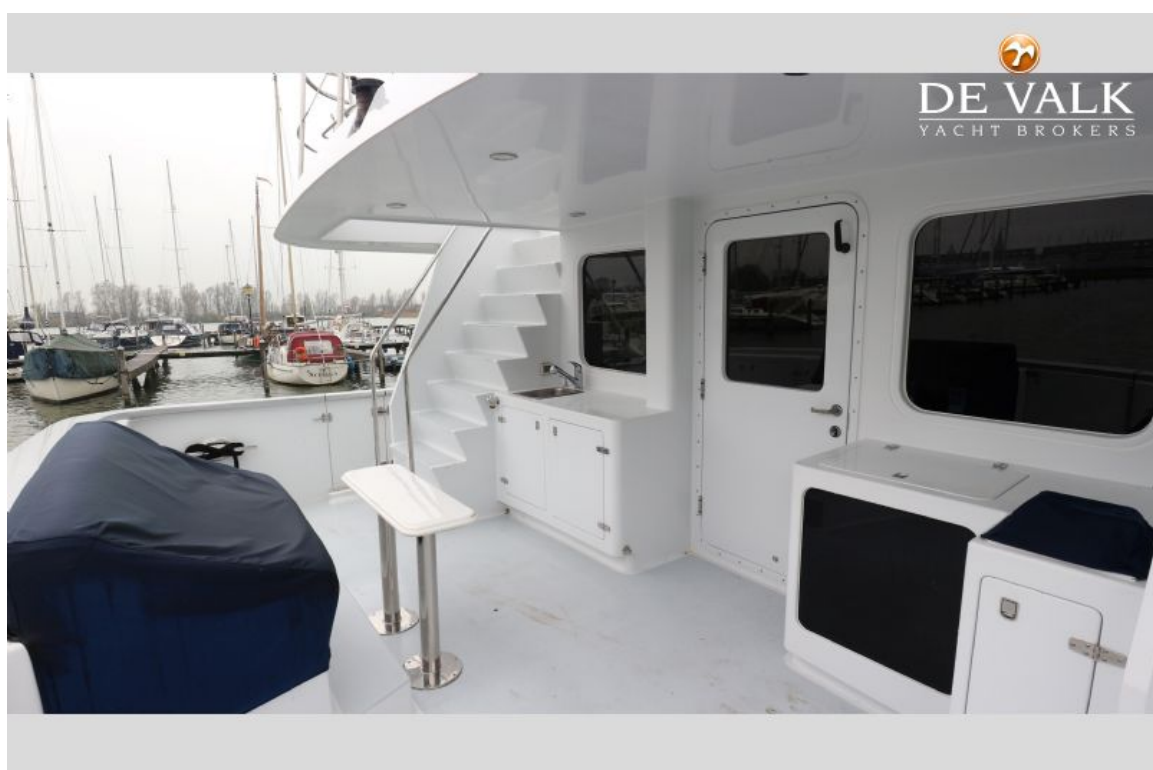
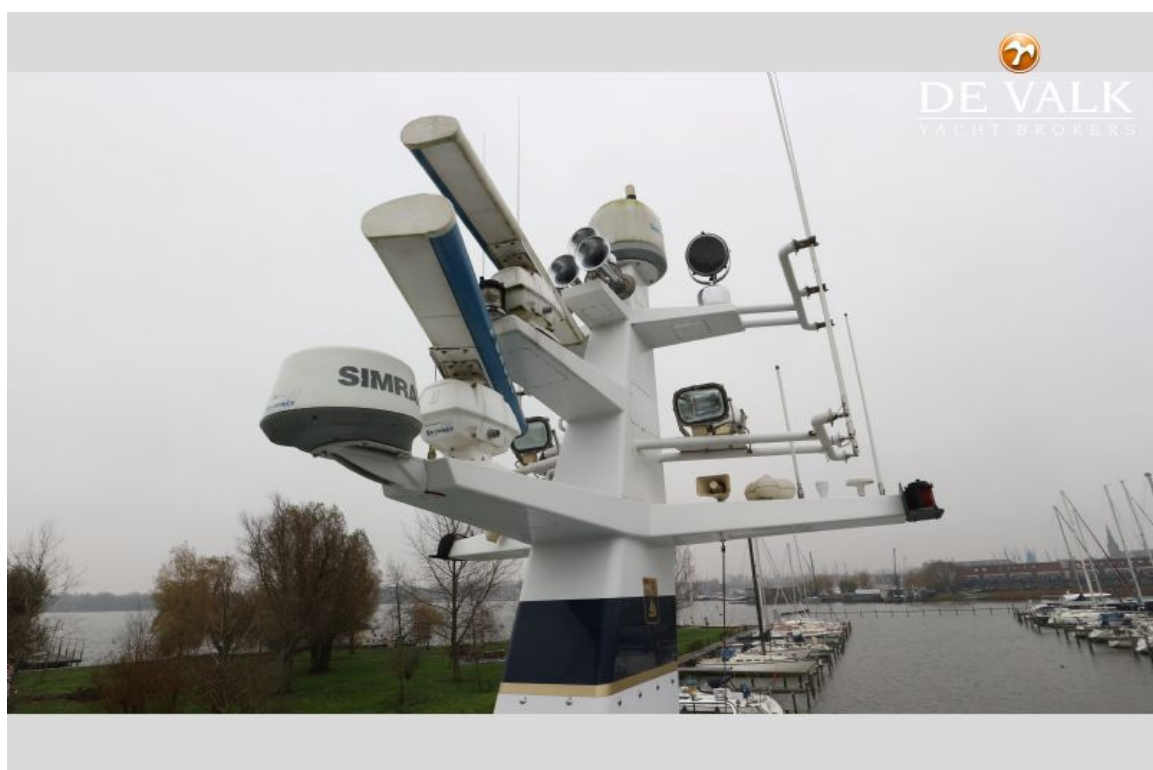




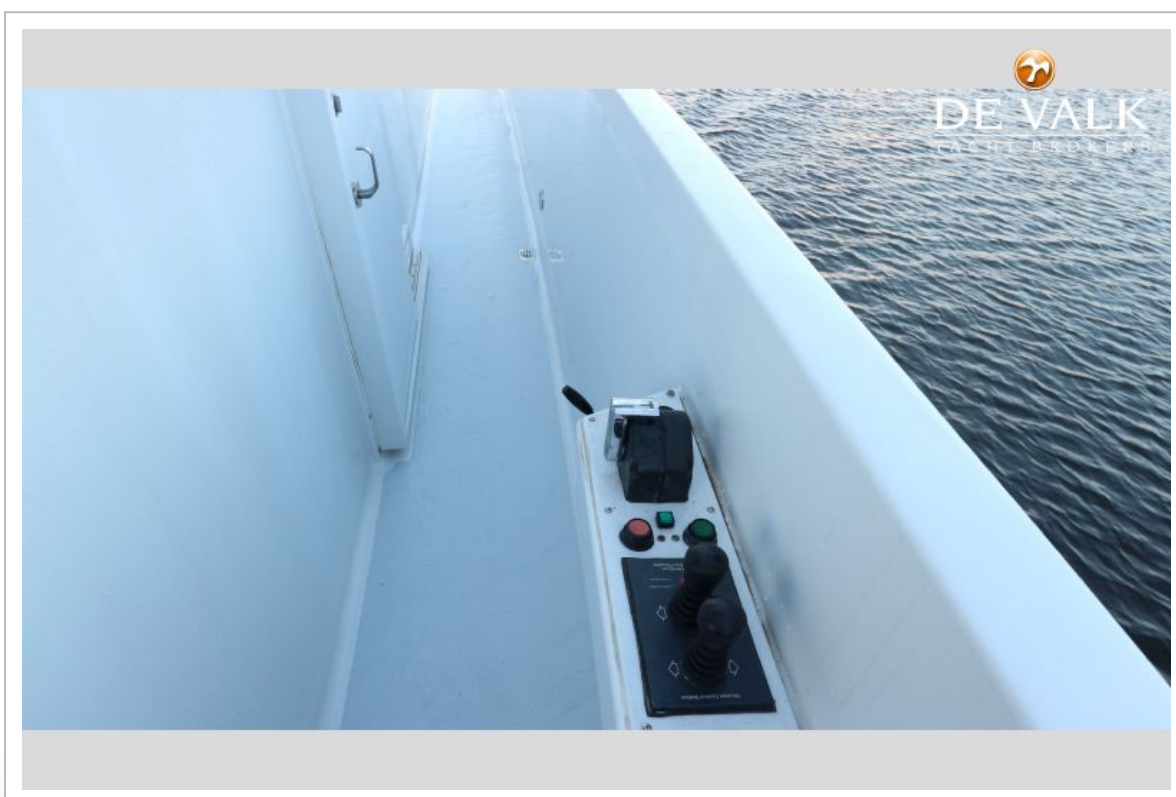
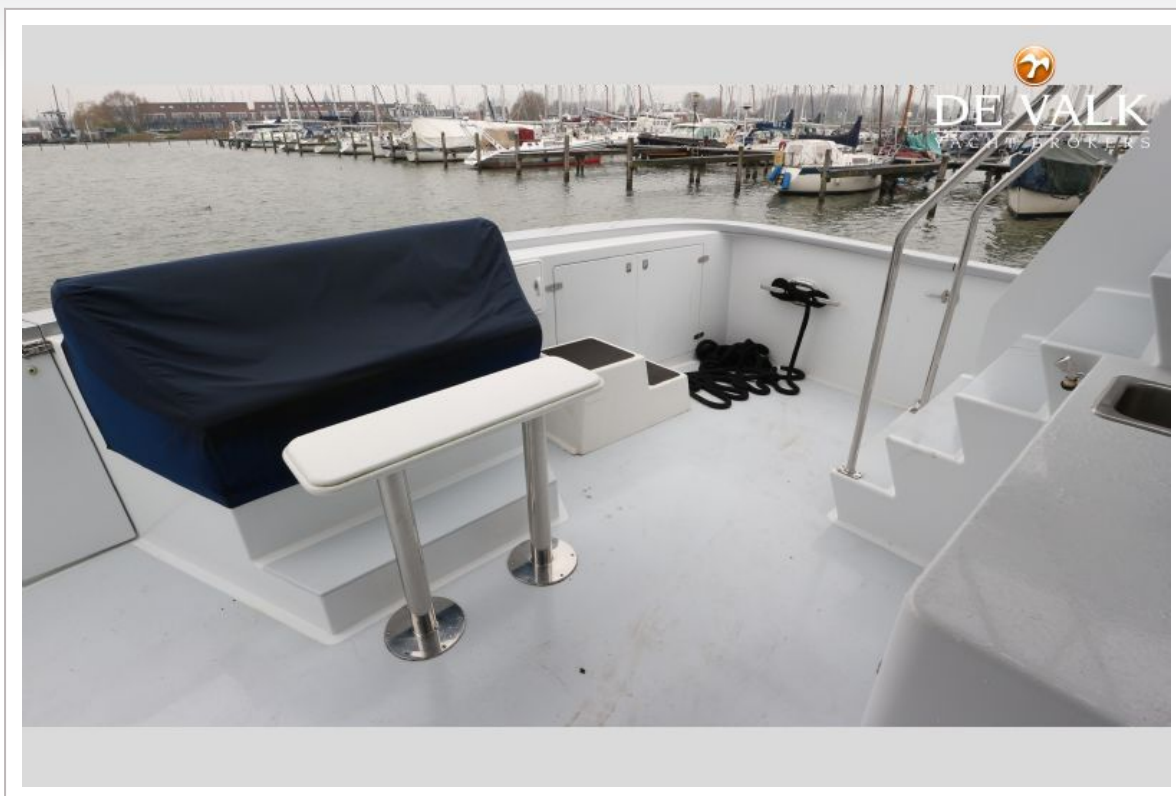


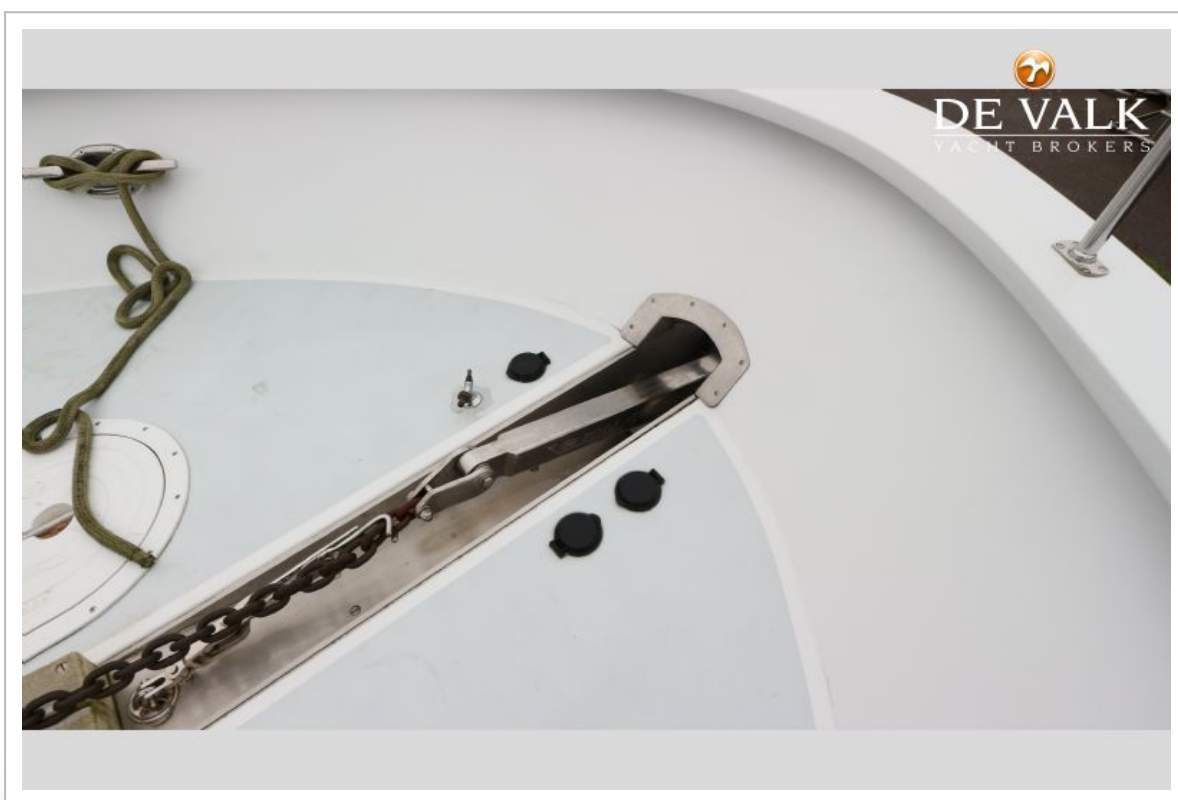
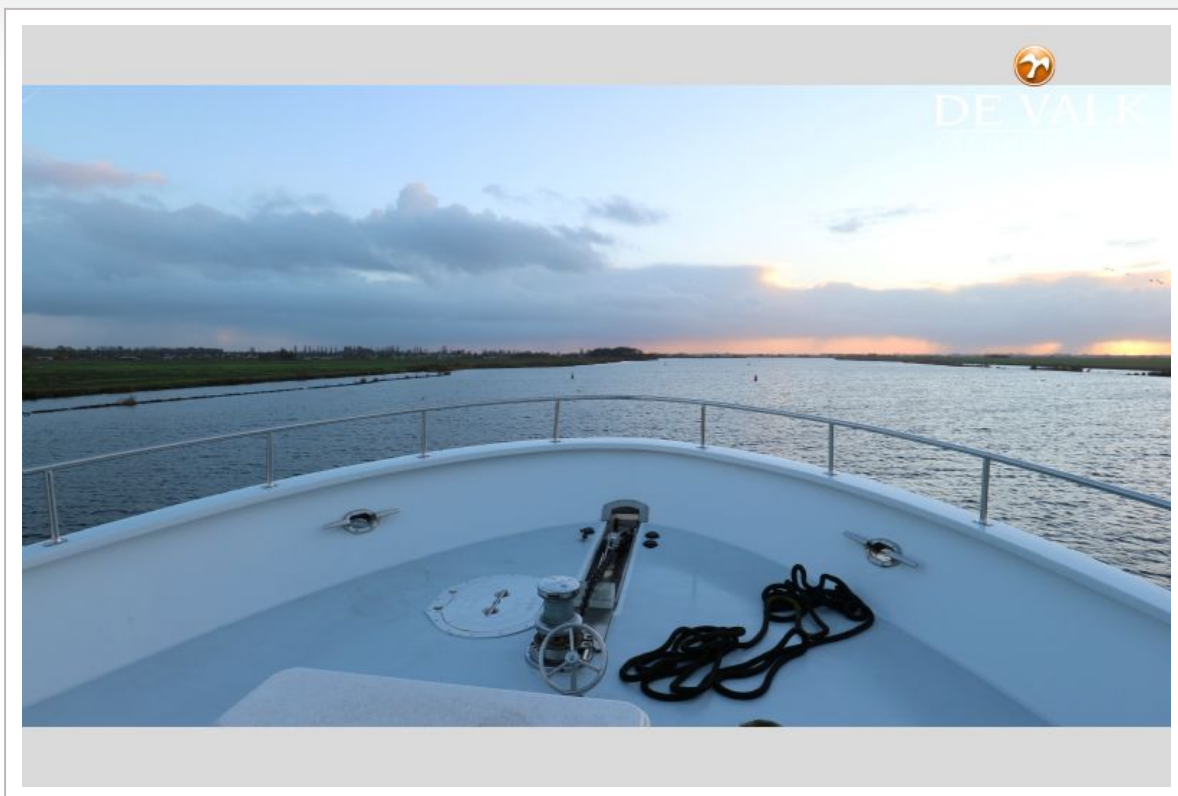




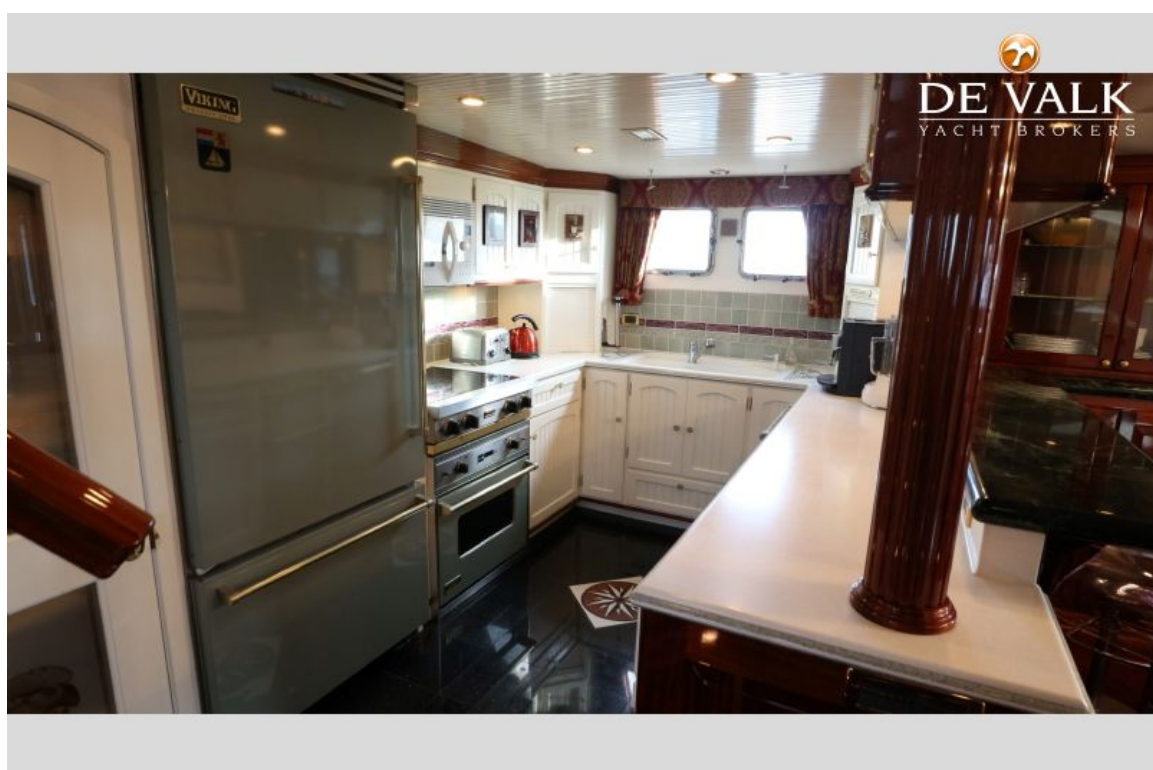
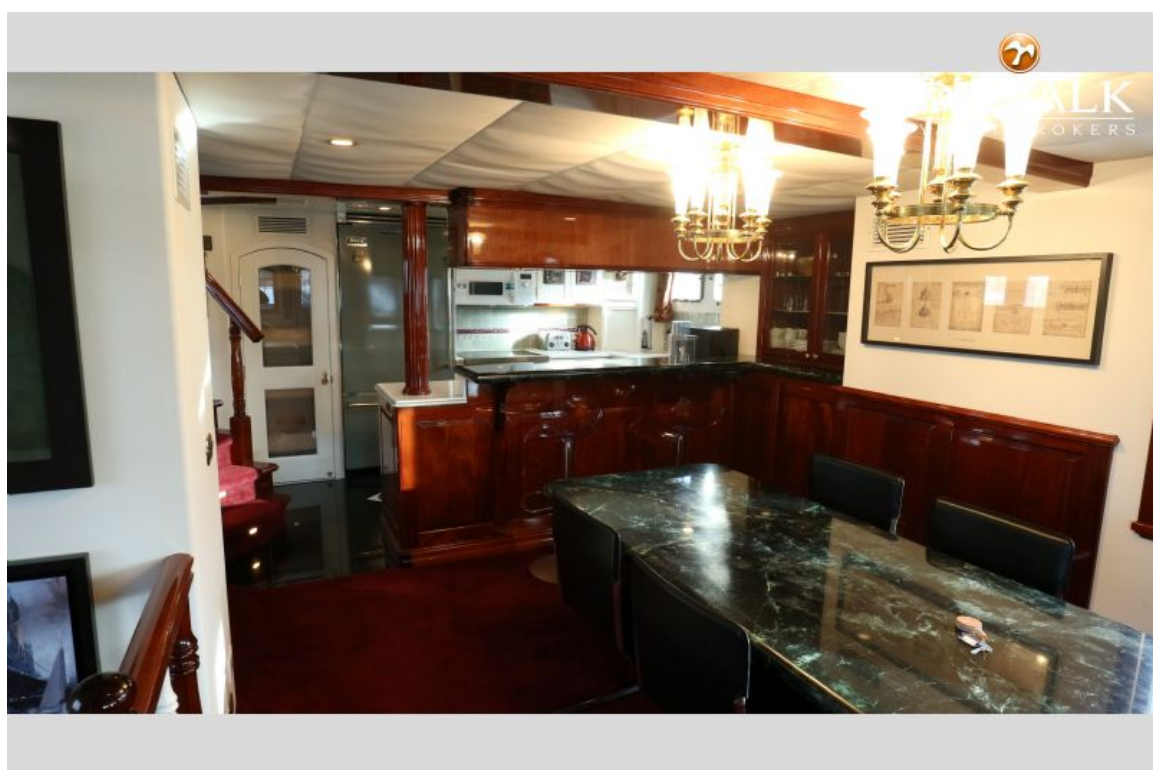


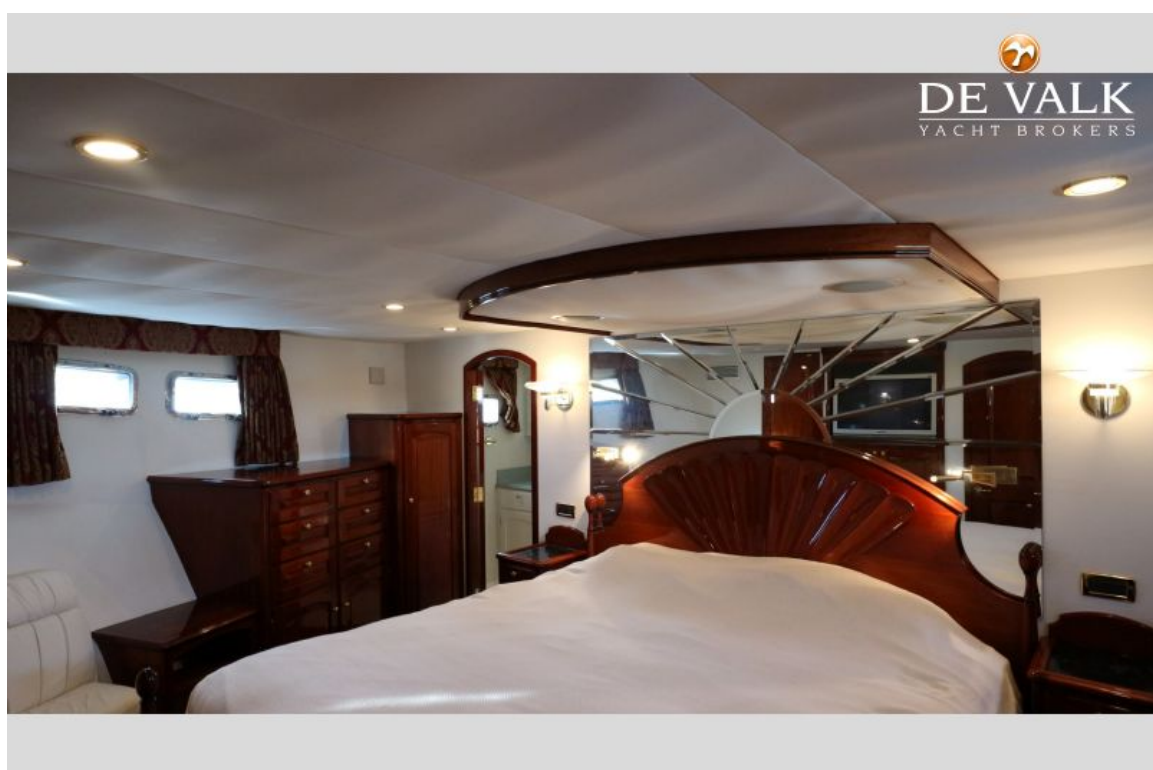
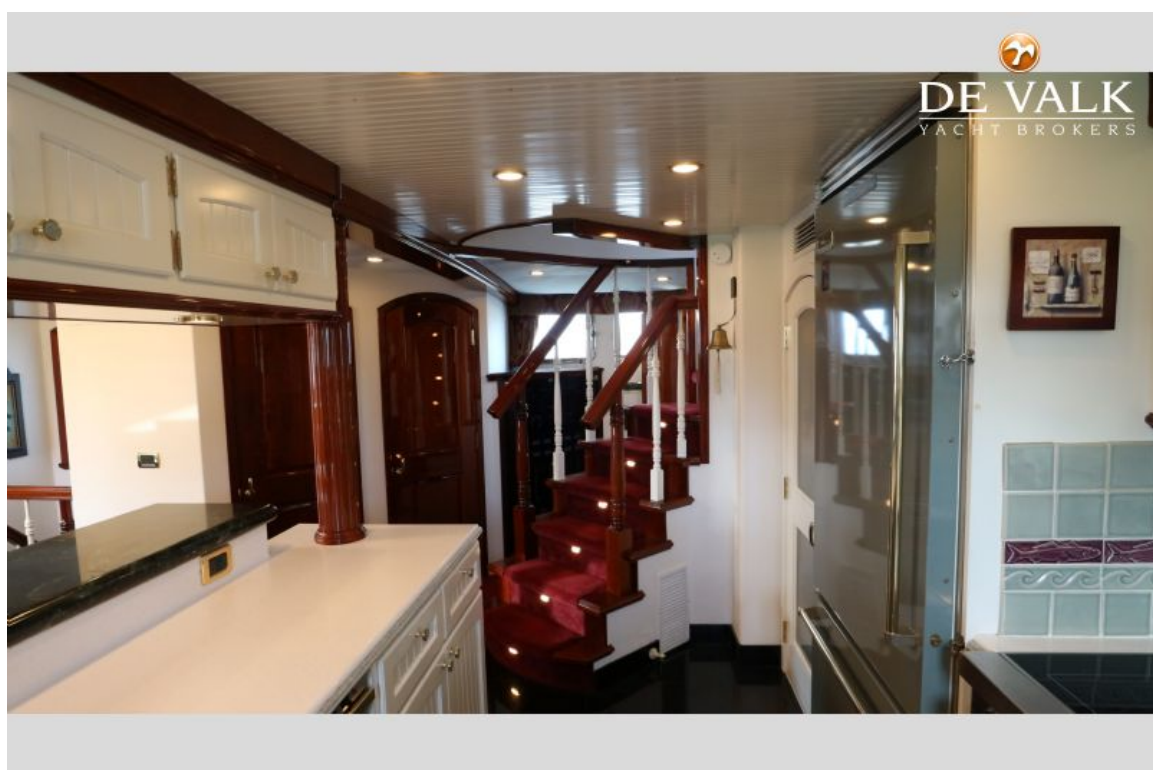
NORTHERN MARINE 78

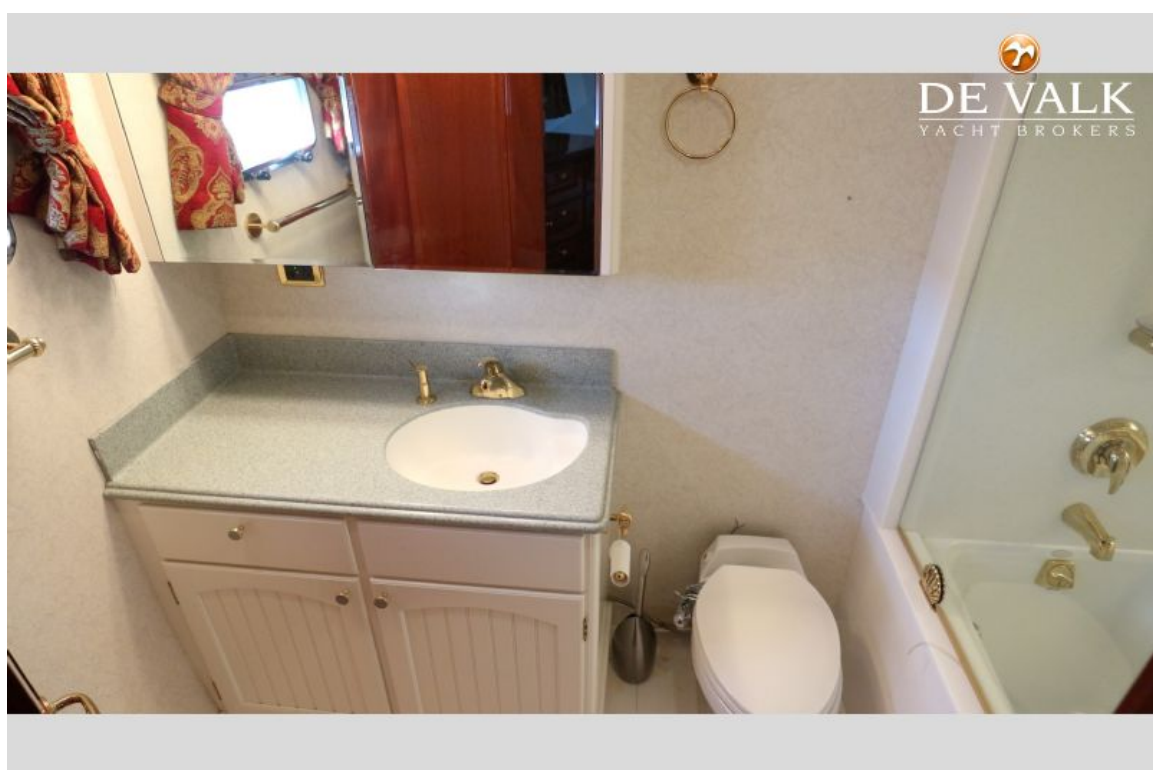
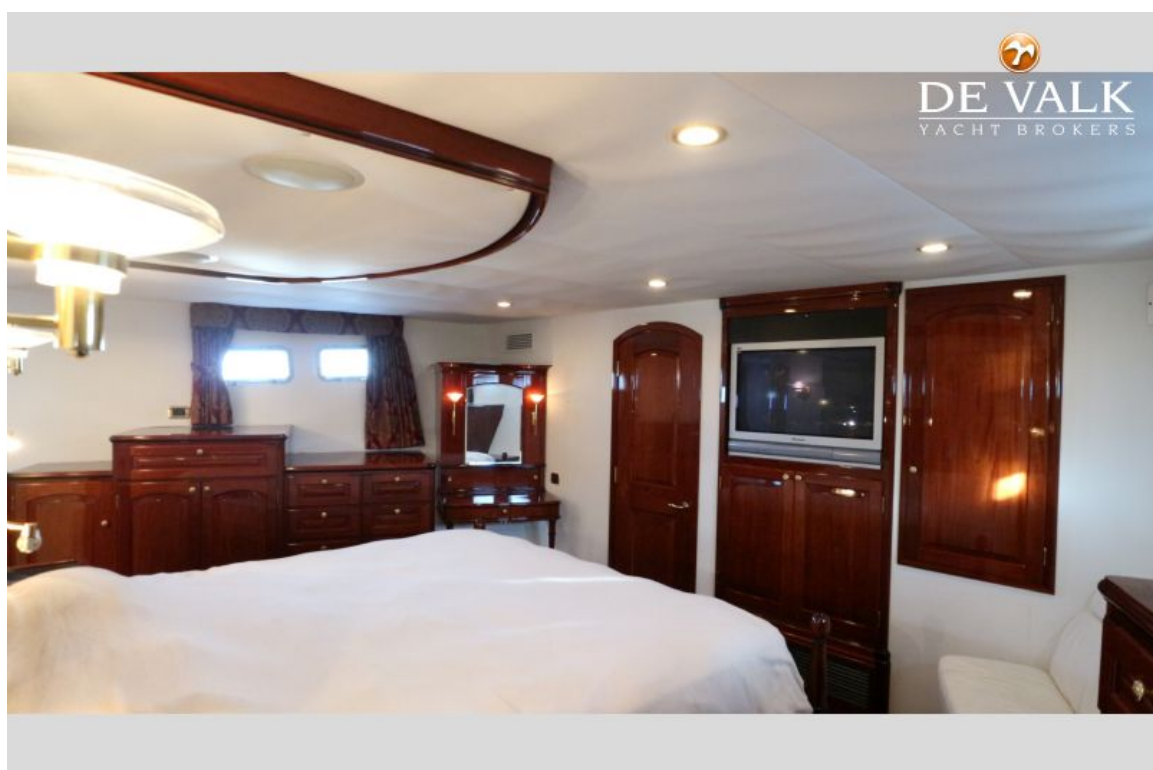




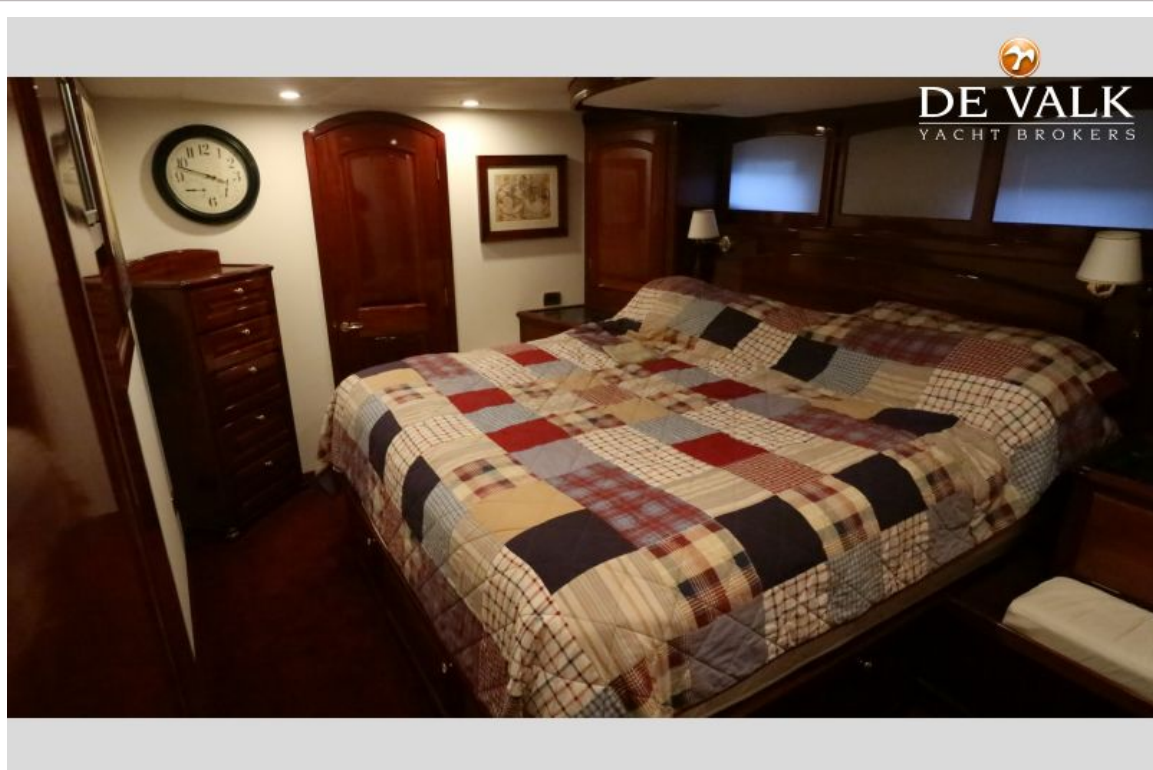
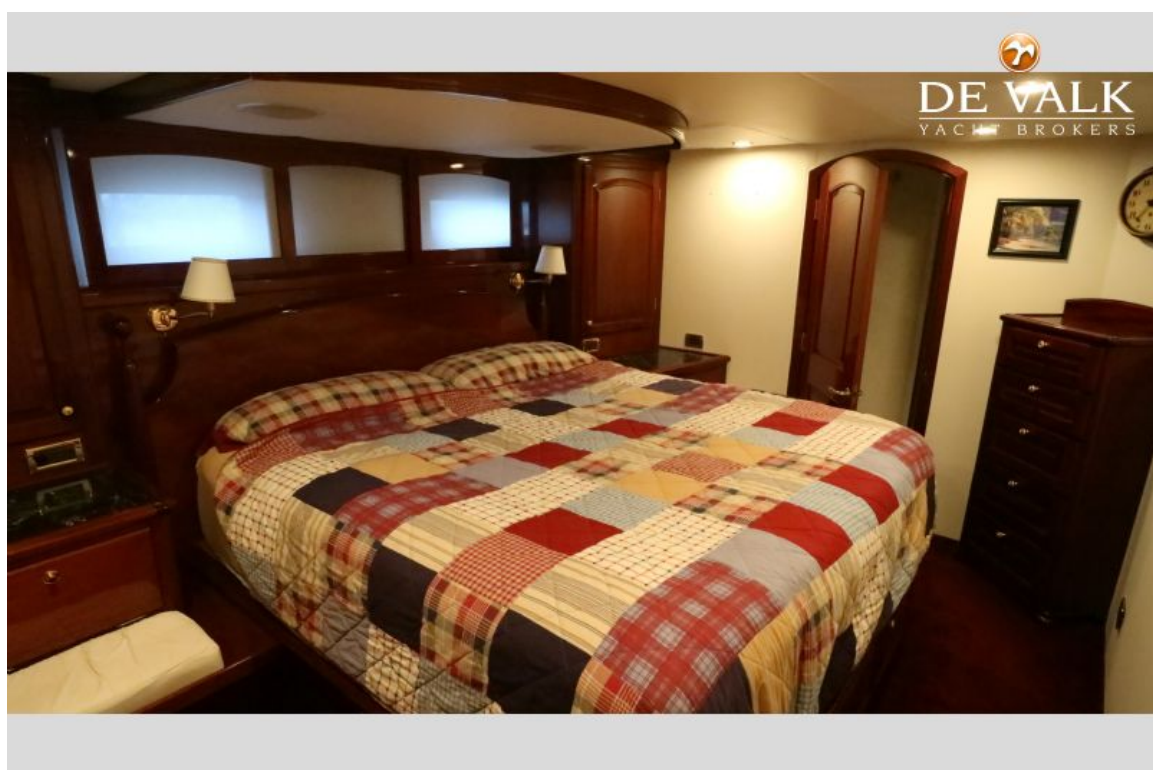


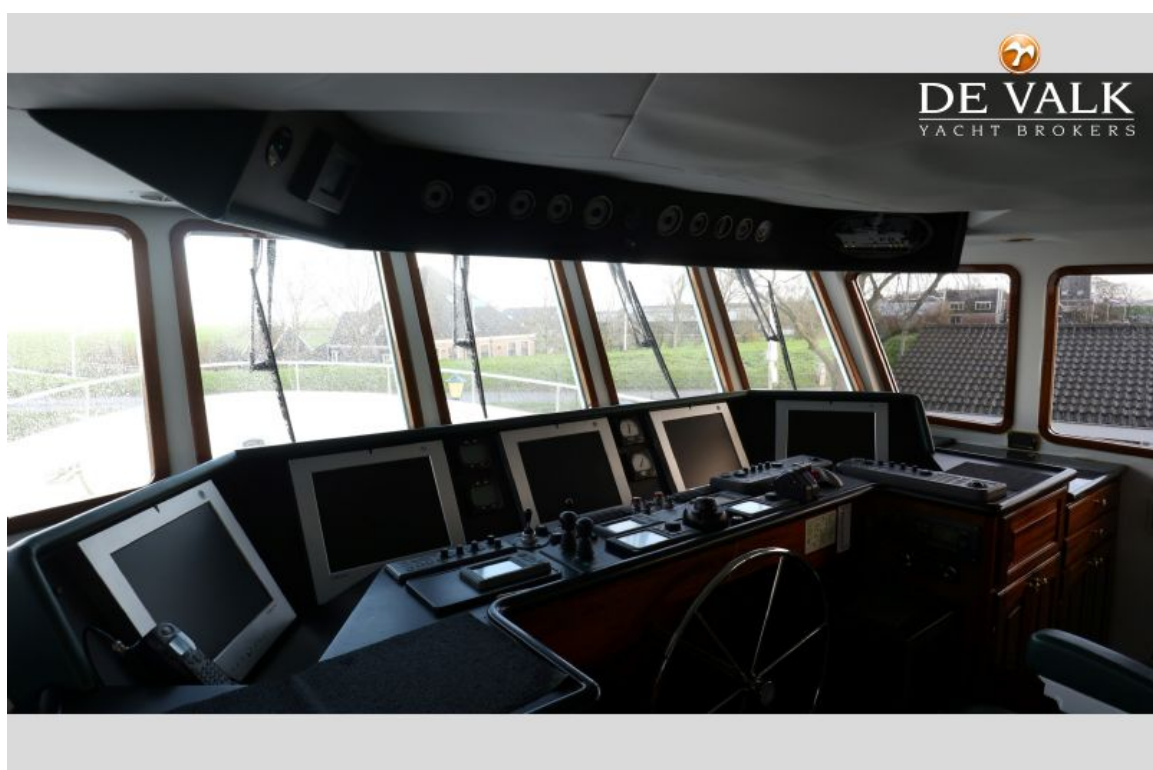
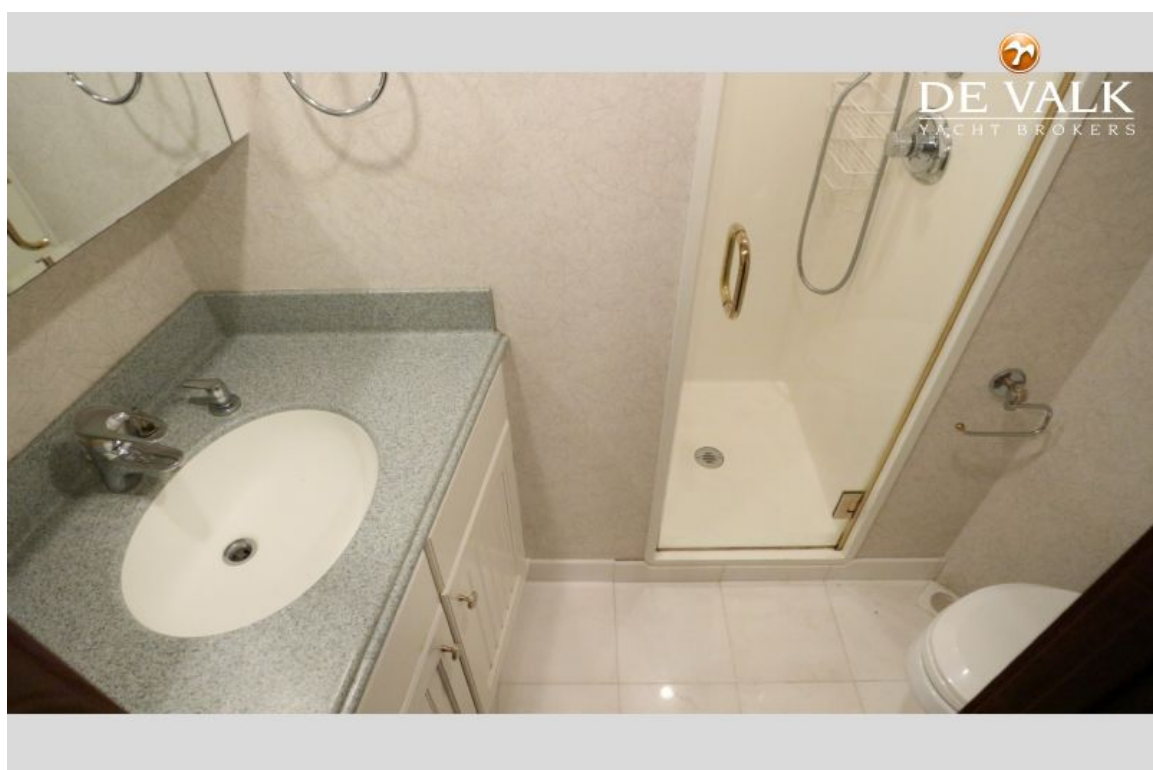


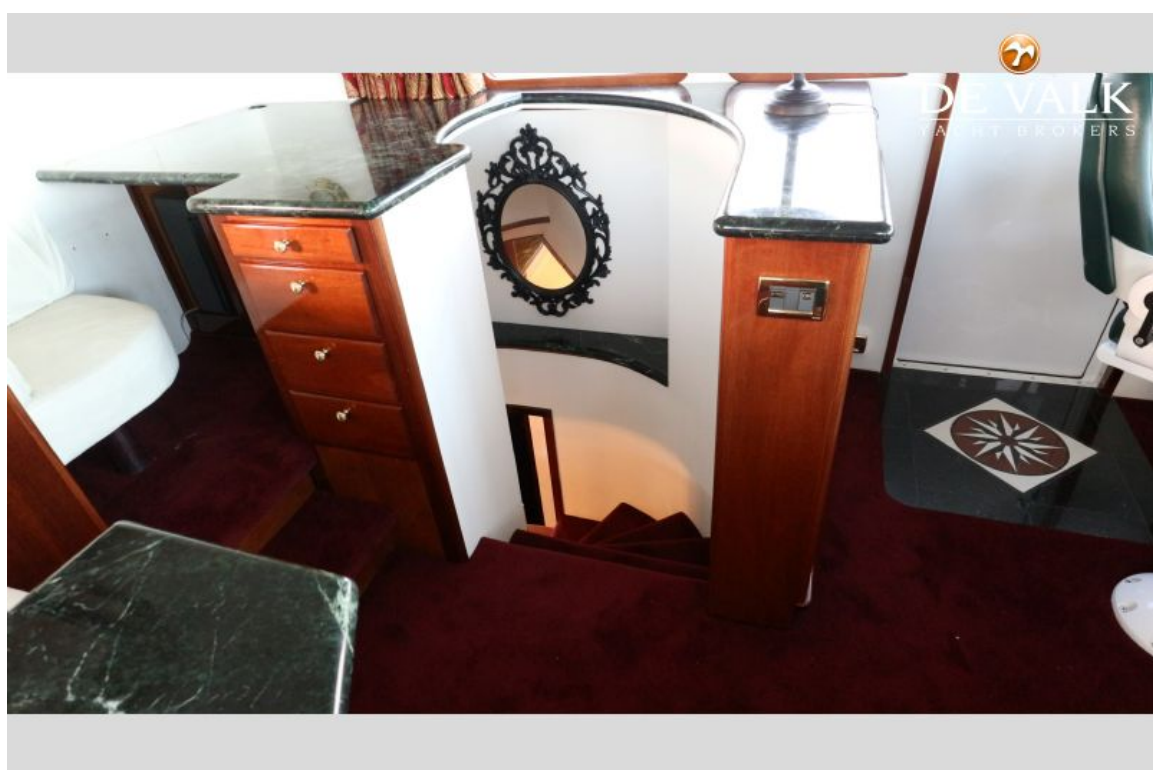
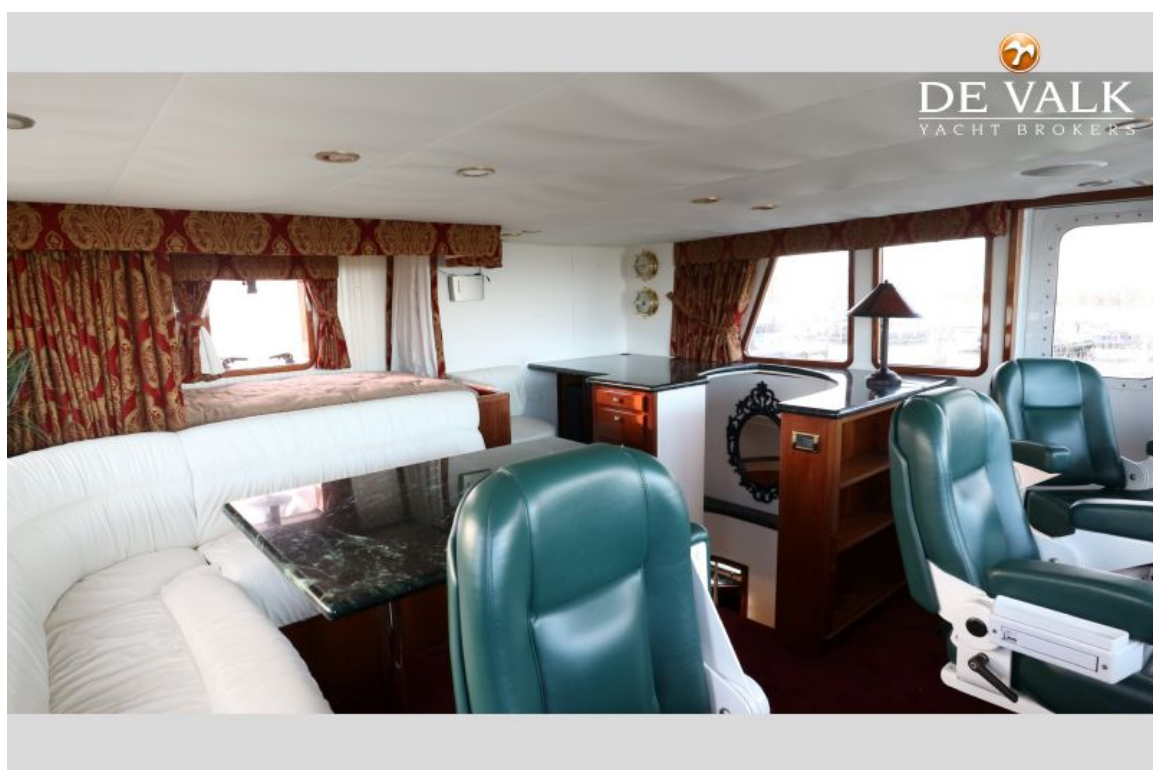


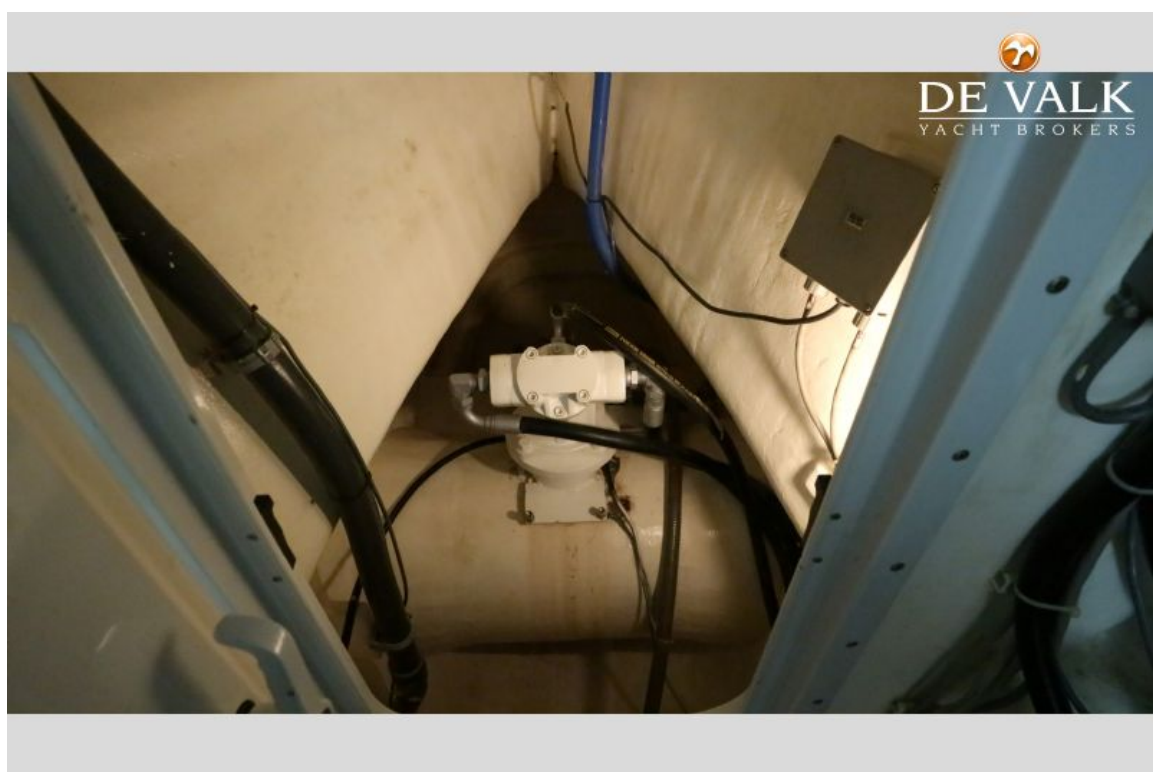


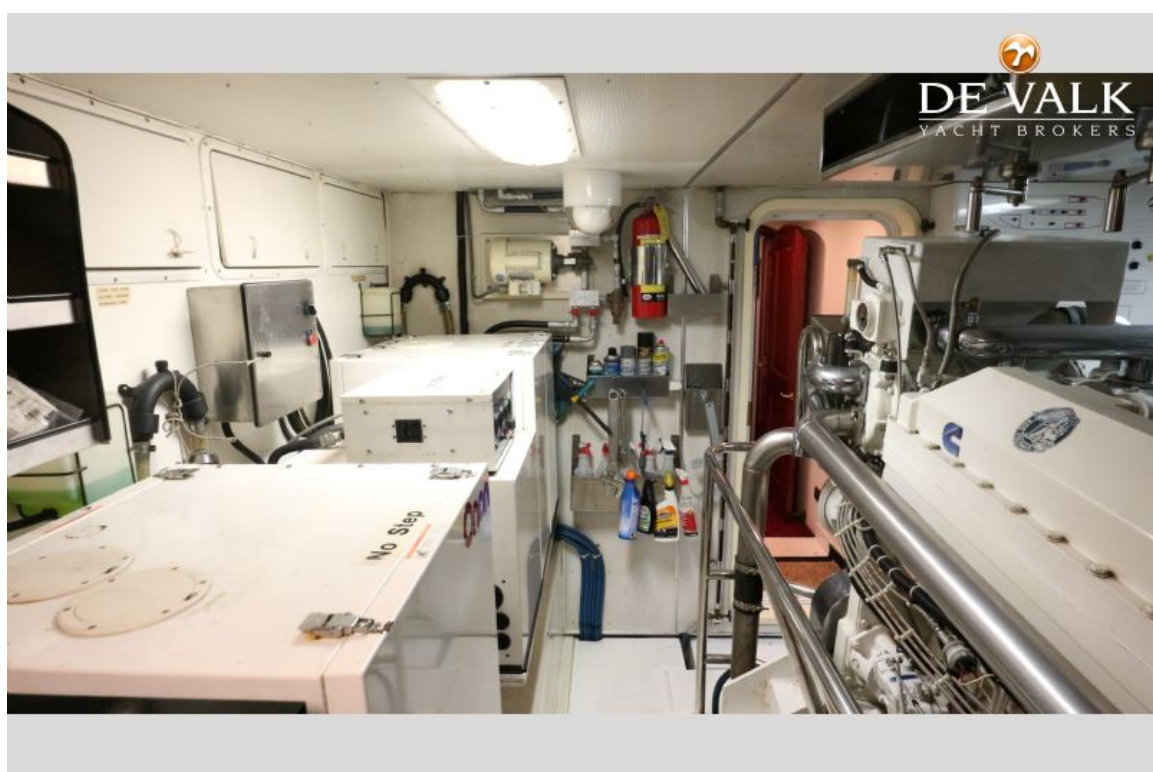
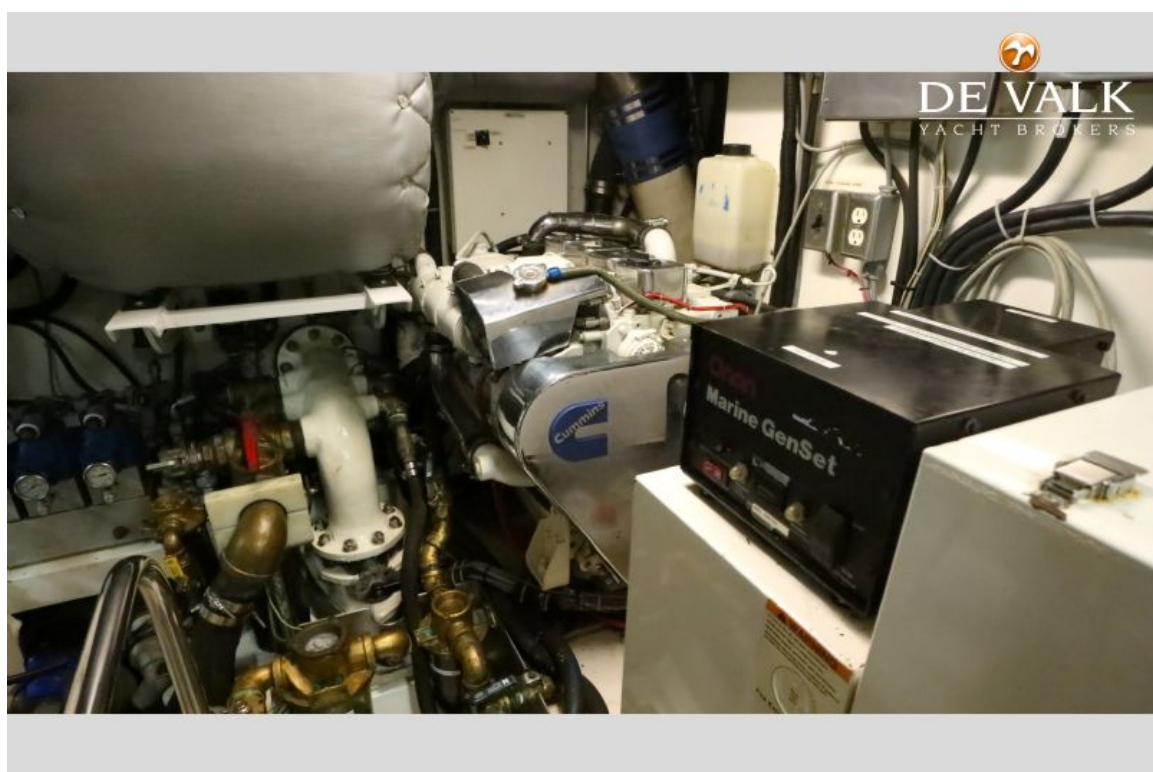
NORTHERN MARINE 78

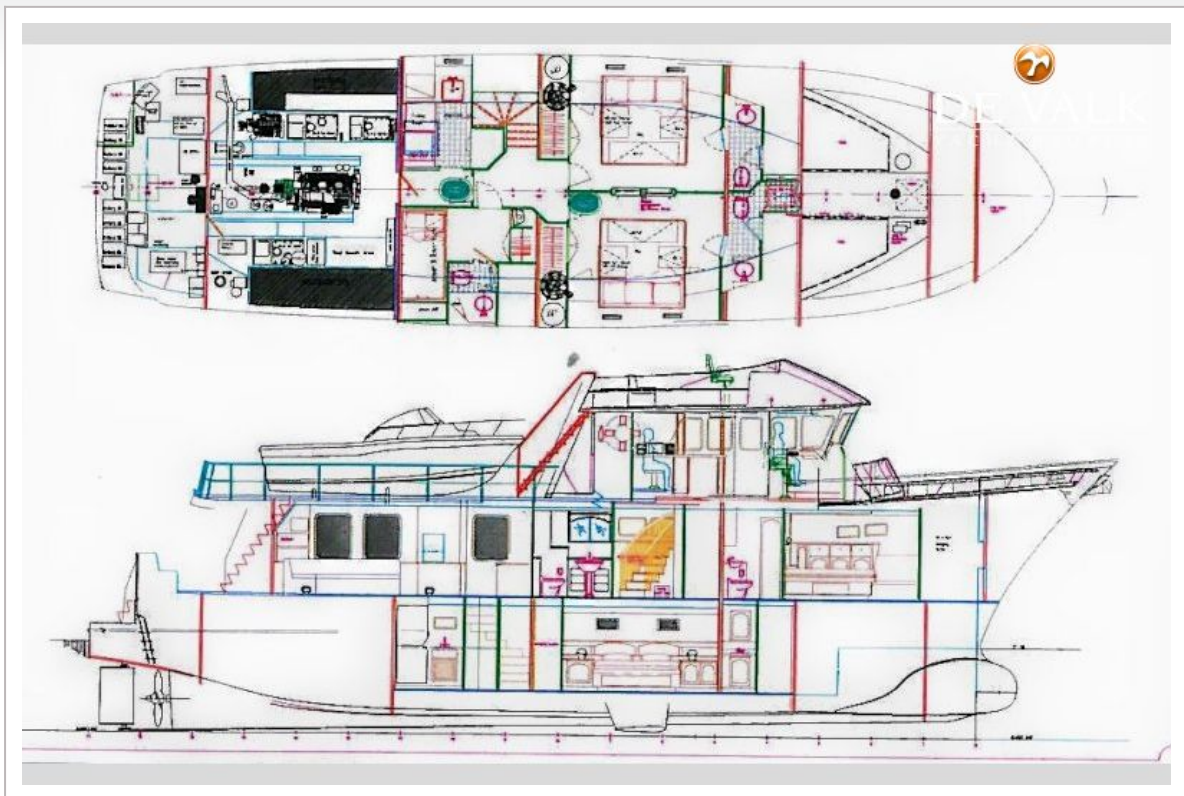












NORTHERN MARINE 78

