



DE VALK



KOOPMANS 56



DE VALK
YACHT BROKERS

BROKER'S COMMENTS

"Zwerver' was originally built at the Aluboot yard in Hindeloopen after a design of the Dutch well known designer Dick Koopmans Sr. "Zwerver" is kept in perfect condition due to her complete refit and overhaul in 2004, and her continuous upgrading during recent years. Excellent navigational equipment, very seaworthy, and her shallow draft makes her ideal for cruising shallow coastal waters or the high seas around the world."

SPECIFICATIONS

Dimensions	16,80 x 4,50 x 1,30 (m)	Builder	Aluboot Hindeloopen
Built	1997	Cabins	3
Material	Aluminium	Berths	6
Engine(s)	1 x Yanmar 4LHA HTP Diesel	Hp/Kw	160 (hp), 117,6 (kw)
	SOLD	Lying	at sales office

CONTACT

Sales office	De Valk Hindeloopen	Telephone	+31 514 52 40 00
Address	Oosterstrand 1	Fax	+31 (0)514 52 40 09
	8713 JS Hindeloopen	E-mail	hindeloopen@devalk.nl
	The Netherlands		

DISCLAIMER

These particulars are given in good faith as supplied but cannot be guaranteed and cannot be used for contracts.



GENERAL

A deck house saloon, aluminum sailing yacht Koopmans 56 "Zwerver", built in 1997, building number 70, dim.: 16.80 x 4.50 x 1.30/2.70 m, electr. hydraulic centreboard, headway approx. 21.50 m, built by Aluboot in Hindeloopen, designed by Dick Koopmans sr., teak deck, aluminum superstructure, displacement approx. 23.000 kg, ballast approx. 10.000 kg, fuel capacity approx. 1.350 ltr (3 x 450l), water capacity approx. 1.000 ltr (2x500 ltr), black/gray water tank approx. 200 ltr, plenty of storage room.

ACCOMMODATION

Pilot house from which one has an excellent view all around, either at anchor or under sail with remote control auto pilot. Cherry wood interior, 3 cabins o.w. one owners cabin, aftcabin, guestcabin, 6 berths, upper saloon with bench for 3 and lower saloon with bench for 5 with large table and 2 seperate seats with entertainment corner, headroom approx. 2.00 m, toilet (2x), shower (2x), Webasto central water heating, airco (2x), hot water system 70 ltr./h (220V and/or main engine, water pressure system, Spectra watermaker, galley with corian blade, refrigerator (245 ltr.), fridge/freezer (160 ltr.), 3-burner electr. stove (Alpin Inox cardanic) with oven/grill, retractor, microwave, washing machine.

MACHINERY

Yanmar 160 PK, 6 cylinder installed 2005, PRM hydraulic gearbox, indirect cooling system, speed approx. 8 knots, 3-bladed max. proppeller, Lewmar bowthruster 13 hp, engine-driven PTO with twin Lewmar power pack 24 Volt, AGM batteries (6x 270 Ah) 810 Ah total, bilge pump (2), electric circuit 24/220 Volt, Fisher Panda generator 4.5 kW (24V), shore power (220/110V), battery charger (2), inverter 3 x 2500W, deckwash pump (220V) which is also used for the air-conditioning, double Separ diesel filters for main engine and a separate one for the generator. Day tank of appr. 200 liter with automatic stop and filling.

NAVIGATION

Sestral magnetic compass, Furuno Navtex NX-300, Furuno GPS/WA AS navigator, B&G hydra 2000, Simrad AP 20 autopilot with very strong 24/24V clutch with inside and outside control panel and remote control from pilot house, Sailor VHF at chart table, Icom VHF handheld, Furuno radar 1932 with arpa, AIS FA-150 (receiver/transmitter) connected to transas, Transas official world wide charts with dongle, analog display by B&G for boat speed, depth, wind angle and wind speed both inside and in cockpit connected to computer, Iridium telephone with possibility to connect to computer for communication, Epirb, Ocean Sentry radar reflector, entertainment room with colour television and DVD-player, isolated backstay connected to SSB radio. SSB radio ICOM 706 MKII with automatic antenna tuner, connected to computer through pactor modem for e-mail communication and weather. Special seawater constructed 12V fan less computer, Interphase forward looking sonar, Bauer dive compressor 220V.

EQUIPMENT

Sprayhood and bimini with possibility to close the cockpit when anchoring in bad weather, searchlight, custom made davids, Lewmar hydraulic windlass, Rocna anchor with hardened 13 mm, 70 meter chain, spare CQR anchor 75LBS, bilge keels, hydraulic bathing platform with ladder, deck shower and deckwash, sea railing with gates and outboard bracket and open push and pullpit, mooring clamps midships, cockpit table and cockpit cushions, folding gangway, life raft (4 persons), wipers,

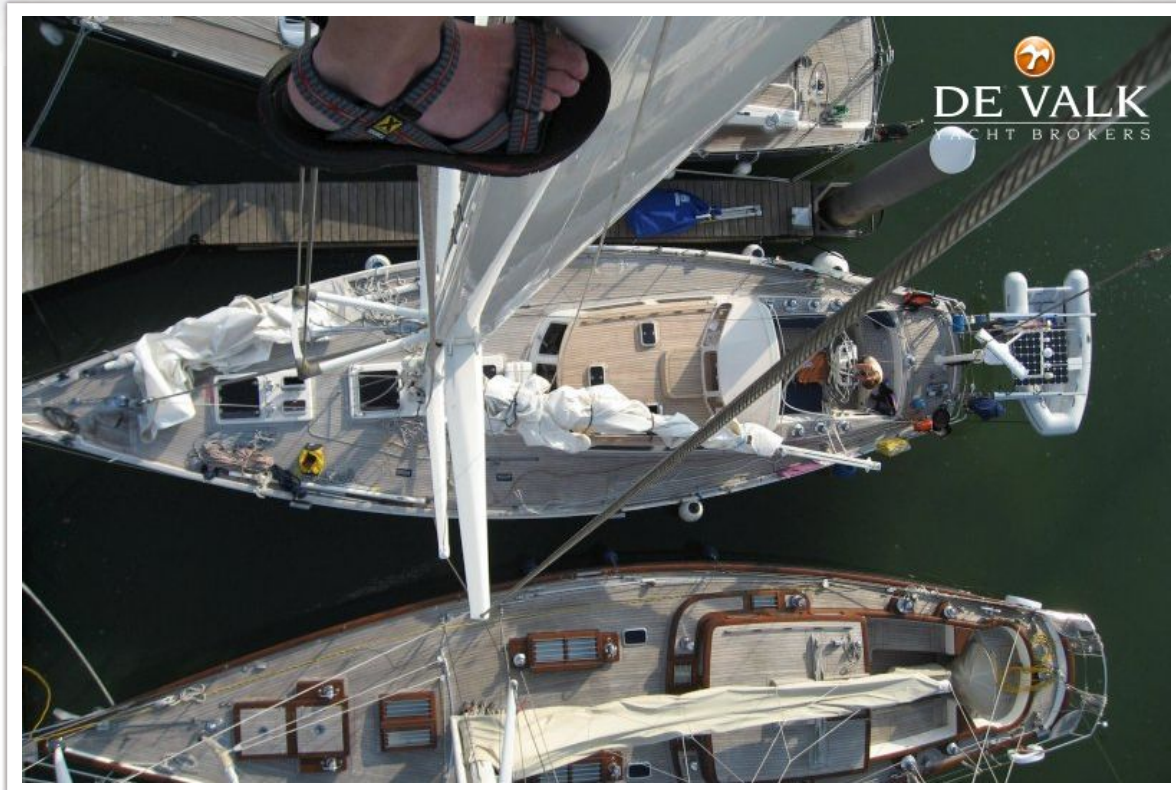


plenty of spare parts, pumps etc, clock and barometer, safe.

RIGGING

Sloop/cutter-rigged, white sprayed Rondal hydraulic stoway mast, deck-stepped with 2 sets of spreaders, dyform rigging, complete overhauled (2011) Rondal hydraulic furling system on headsail and cutter sail, all hydraulic sails controlled by buttons on the steering pedestal, new set of sails, new hallyards, mainsail 60 m², jib 30 m², genoa 70m², genoa 90m², blister 120 m², Navtec hydraulic boom vang, 2x Navtec hydraulic backstayadjusters, running backstays, both controlled by Navtec pack in cockpit, Lewmar all hydraulic winches 2x 64 ST, 2x 54 ST, 2 x 50 ST and 1x 50 ST for backstay, 1x spi boom fitted on mast, jockey pole, 1x spi boom mounted on deck.





KOOPMANS 56





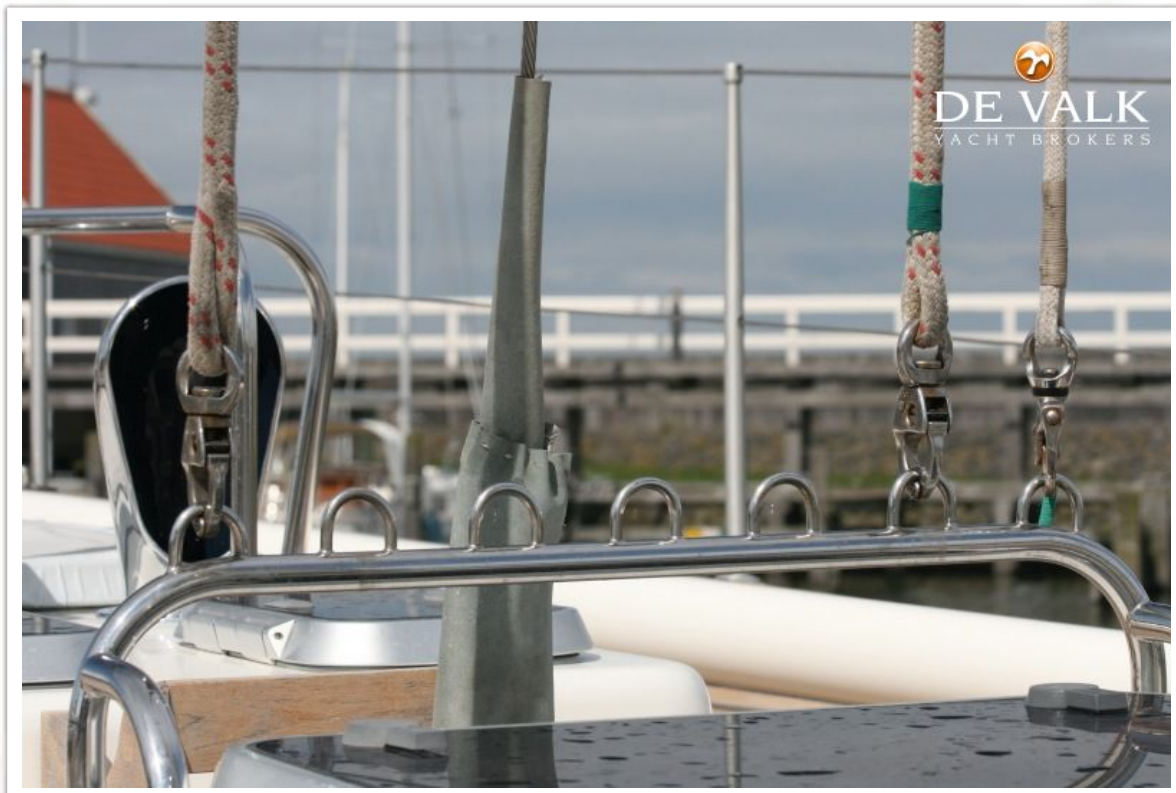
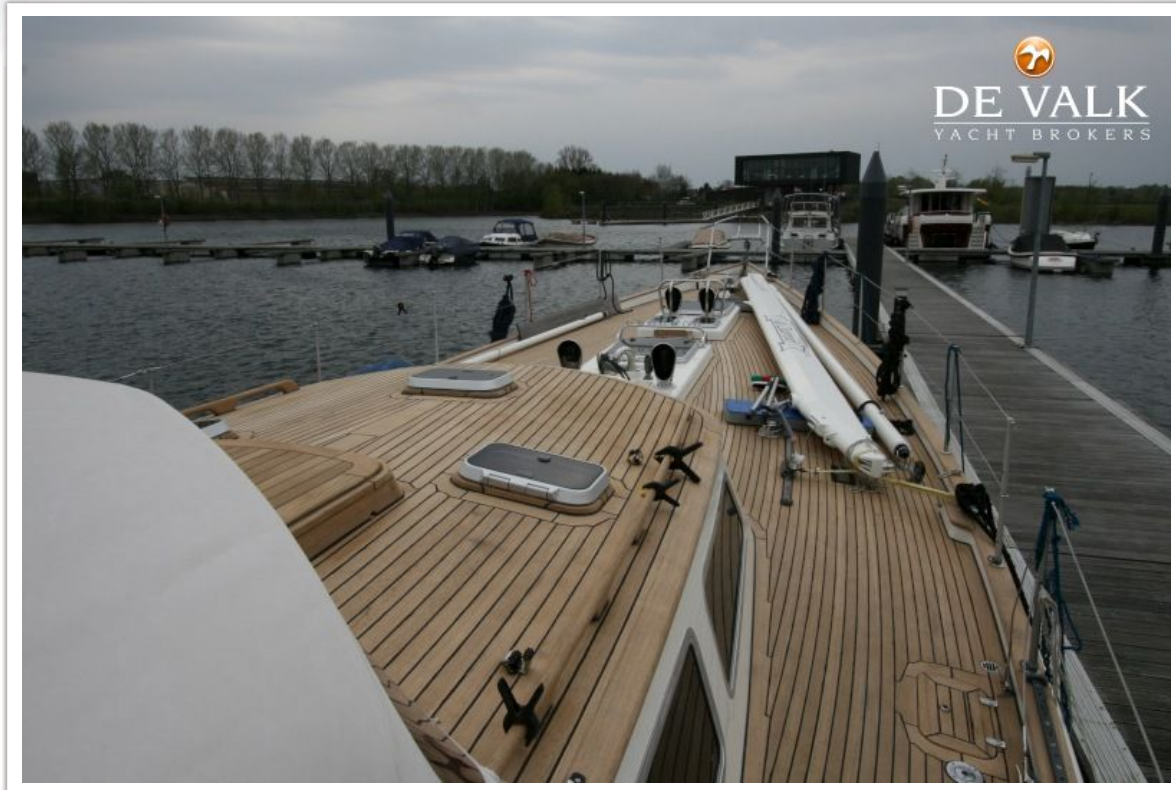
KOOPMANS 56



KOOPMANS 56



KOOPMANS 56



KOOPMANS 56



KOOPMANS 56



KOOPMANS 56



KOOPMANS 56



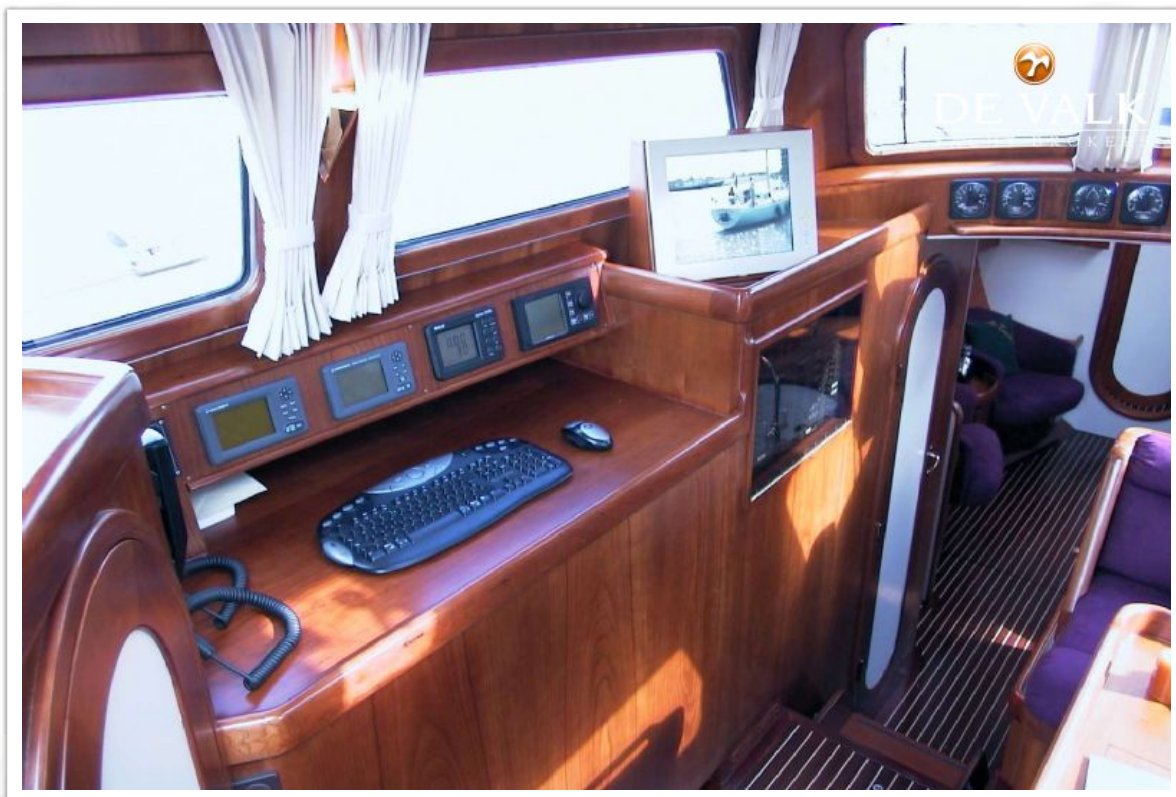
KOOPMANS 56



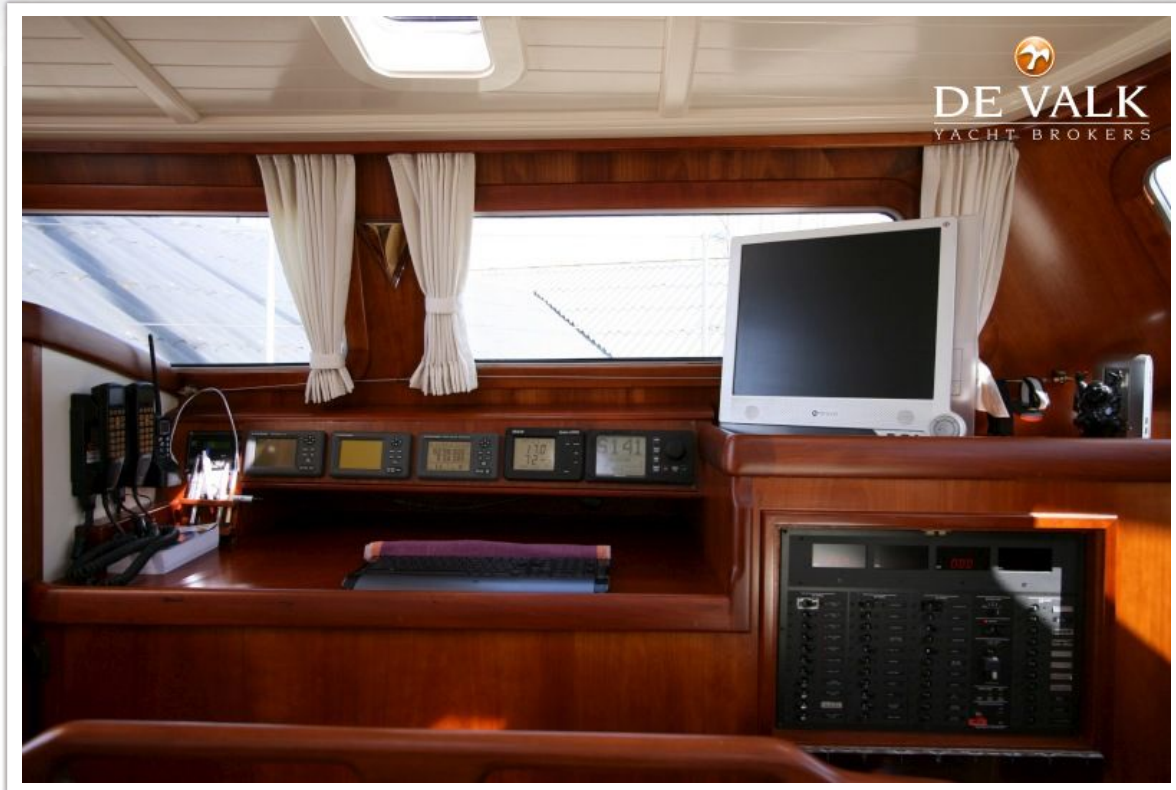
KOOPMANS 56

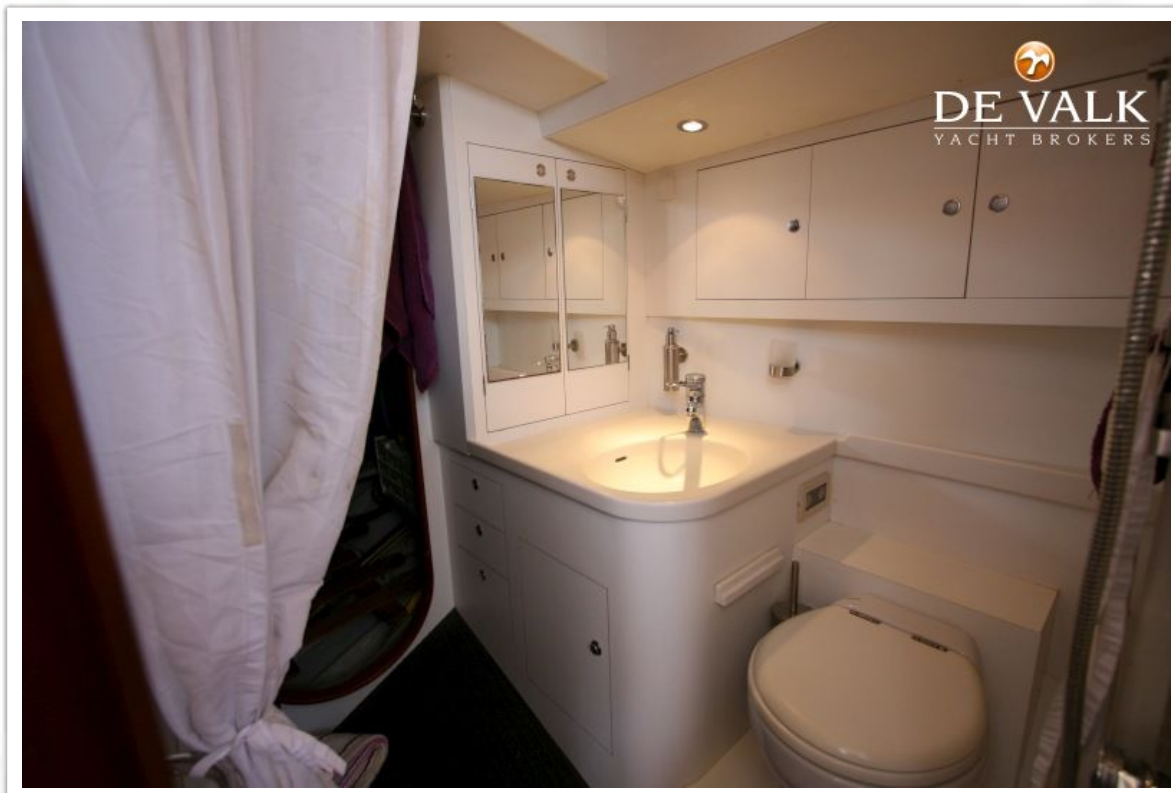


KOOPMANS 56



KOOPMANS 56





KOOPMANS 56



KOOPMANS 56



KOOPMANS 56

