



DE VALK
YACHT BROKERS



CONTEST 38S



DE VALK
YACHT BROKERS

CONTEST 38S

BROKER'S COMMENTS

"The Constes 38 S is designed by Dick Zaal as a high quality sea going yacht with comfortable living accommodations. The Contest 38 S is both efficient at sea and comfortable in port. This Beautiful maintained Contest 38 S has a luxurious atmosphere, ample stowage space and headroom, combined with a smart and effective layout. This makes the Contest 38 S ideal for an owners couple."

Hans Visser

SPECIFICATIONS

Dimensions	11,36 x 3,65 x 1,65 (m)	Builder	conyplex
Built	1990	Cabins	2
Material	GRP	Berths	6
Engine(s)	1 x YANMAR 4JH2E diesel	Hp/Kw	50 (hp), 36,8 (kw)
Asking price	EUR 72.000 (vat: paid)	Lying	at sales office

CONTACT

Sales office	De Valk Hindeloopen	Telephone	+31 514 52 40 00
Address	Oosterstrand 1 8713 JS Hindeloopen The Netherlands	Fax	+31 (0)514 52 40 09
		E-mail	hindeloopen@devalk.nl

DISCLAIMER

These particulars are given in good faith as supplied but cannot be guaranteed and cannot be used for contracts.



GENERAL

Model	CONTEST 38S
Type	sailing yacht
LOA (m)	11,36
LWL (m)	9,30
Beam (m)	3,65
Draft (m)	1,65
Headroom (m)	1,90
Year built	1990
Launched	1990
Builder	conyplex
Country	The Netherlands
Designer	Dick Zaal
Displacement (t)	8,5
Ballast (tonnes)	cast iron 3,5
Gross tonnage	13,41
CE norm	NA
Hull material	GRP
Hull colour	white Blue striping
Hull shape	round-bilged
Keel type	wing keel
Superstructure material	GRP
Rubbing strake	stainless steel
Deck material	GRP
Deck finish	teak needs some work
Superstructure deck finish	teak needs some work
Cockpit deck finish	teak needs some work
Antifouling (year)	2024 (pending)
Dorades	2 x
Window frame	aluminium
Window material	polycarbonate



Deckhatch	3 x
Portholes	aluminium 8 x
Fuel tank (litre)	stainless steel 240
Level indicator (fuel tank)	yes
Freshwater tank (litre)	stainless steel 360
Level indicator (freshwater)	yes
Wheel steering	mechanical Whitlock
Outside helm position	mechanical
Emergency tiller	yes

ACCOMMODATION

Cabins	2
Berths	6
Interior	teak upholstery replaced 2000
Layout	private
Floor	teak and holly
Saloon	yes
Headroom saloon (m)	1,90
Heating	diesel ducted hot air Webasto Airtop 40 Evo 2021
Chart table	yes
Aft Cabin	yes
Convertible berth	yes
Sliding door to cockpit	yes
Galley	L shaped
Countertop	wood
Sink	stainless steel
Cooker	calor gas 3 burner Techimpex
Oven	integrated
Fridge	yes
Hot water system	220V + engine Sigma marine 20 l



Water pressure system	yes
Owners cabin	yes
Bed length (m)	2,00 x 1,60
Wardrobe	hanging and shelves
Bathroom	separate
Toilet	separate
Toilet system	manual
Wash basin	in the bathroom
Shower	separate
Guest cabin 1	double bed
Bed length (m)	2,00 x 1,50
Wardrobe	hanging and shelves
Bathroom	shared
Toilet	shared
Shower	shared

MACHINERY

No of engines	1
Make	YANMAR
Type	4JH2E
HP	50
kW	36.80
Fuel	diesel
Year installed	1990
Maximum speed (kn)	8
Cruising speed (kn)	6,5
Consumption (l/hr)	2,1
Engine hours	5000
Engine cooling system	freshwater heat exchanger
Drive	shaft
Shaft seal	yes



Engine controls	mechanical
Gearbox	mechanical
Propeller type	fixed
Propeller blades	3
Propeller shaft material	stainless steel
Shaft lubrication	water
Manual bilge pump	yes
Electric bilge pump	2 x
Electrical installation	12 V DC and 220 V AC
Batteries	4 x
Start battery	1 x 80 Ah 12 V 10-2020
Service battery	2 x 100 AH 12 V platinum marine 10-2020
Battery monitor	yes
Battery charger	(2003)
Shorepower	with cable
Extra info	Enginehours is based on calculation not on actual hours
Extra info	engine maintenance available for years

NAVIGATION

Compass	pedestal
Electric compass	Raymarine
Multi control display	yes
Depth sounder	Raymarine I50 2017
Log	Raymarine I50 2017
Windset	Raymarine I50 2017
Repeater	Raymarine I50 multi inside 2017
VHF	Sailor 2042 with speaker (2017)
Autopilot	Raymarine dual P70R station (2017)
Rudder angle indicator	Raymarine on autopilot
Radar	Furuno



GPS	Raymarine & Garmin & furuno GP32 Waas (2017)
Plotter	yes
Plotter/GPS	Raymarine hybrid Touch E75 2017
Navtex	Weatherfax (needs service)
Navigation lights	yes

EQUIPMENT

Fixed windscreen	yes
Sprayhood	2021 Sudersee Makkum admiral blue
Cockpit cover	Sudersee Makkum 2021 admiral blue
Winter cover	yes
Cockpit table	yes
Boarding ladder	yes
Anchor	yes
Anchor chain	yes
Windlass	yes
Sea railing	yes
Grab rail (superstructure)	yes
Pushpit	yes
Pulpit	yes
Life raft	needs service
Lifejackets	yes
Fenders	yes
Tools	yes
Radio-cd player	(2020)
Speakers in salon	yes
Clock - barometer	yes
Fire extinguisher	yes



RIGGING

Rigging	sloop
Standing rigging	wire
Brand mast	Seldén
Material mast	aluminium
Spreaders	2 sets
Mainsail cover	yes
Fully battened mainsail	De Vries Makkum 2005 with dutchman system
Cutterstay	removable
Genoa I	furling Doyle 1998
Genoa III	37 m2 cruising offshore UK-Halsey de Vries 2009
Genoa furler	Furlex
Yankee	yes
Trysail	yes
Stormjib	yes
Reefing System	slabreefing 3 x
Boomvang	yes
Primary sheet winch	2 x Enkes 28 ASC
Halyard winches	2 x
Isolated backstay	yes
Extra info	P:12, E:4,10, J:4,46,



CONTEST 38S



CONTEST 38S



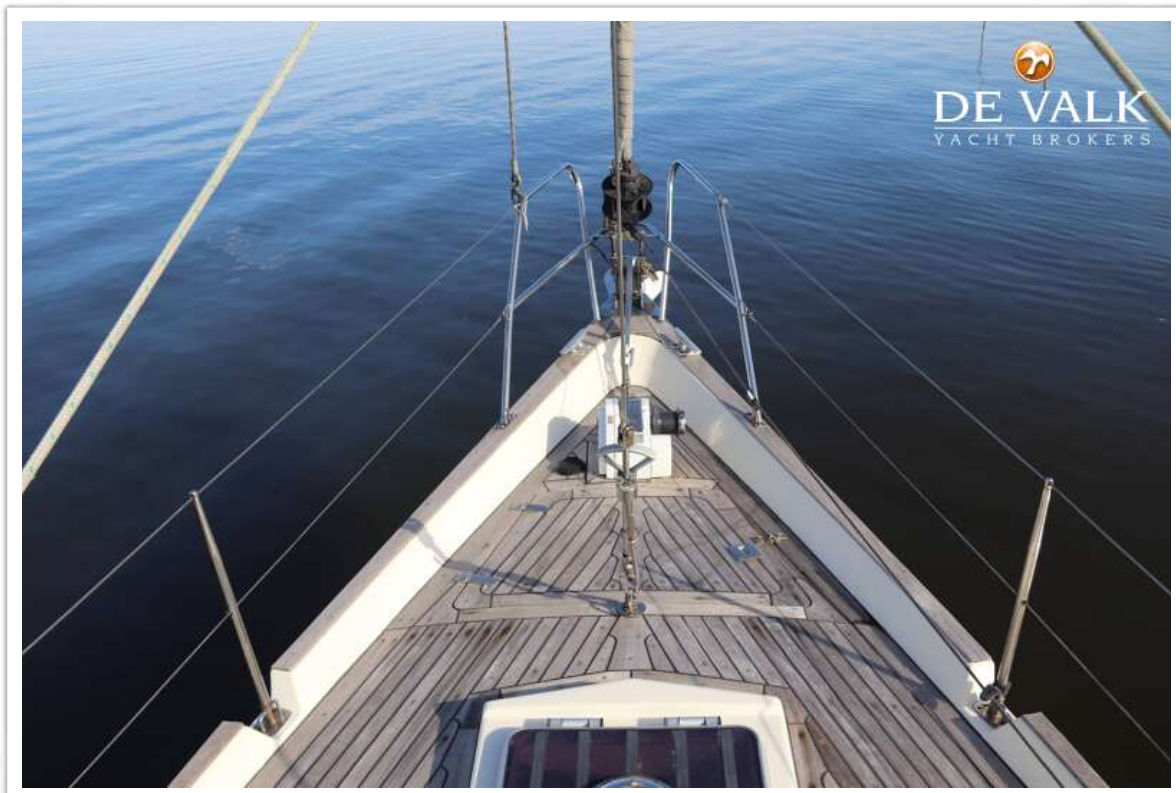
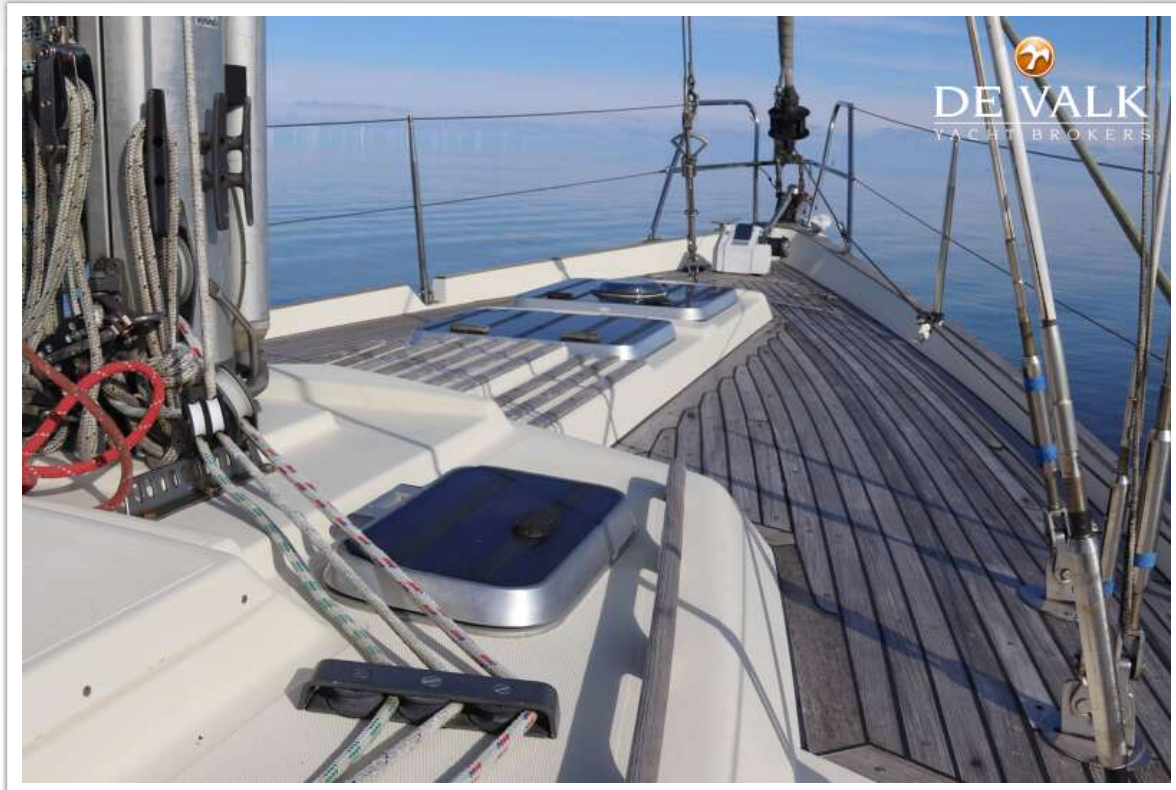
CONTEST 38S



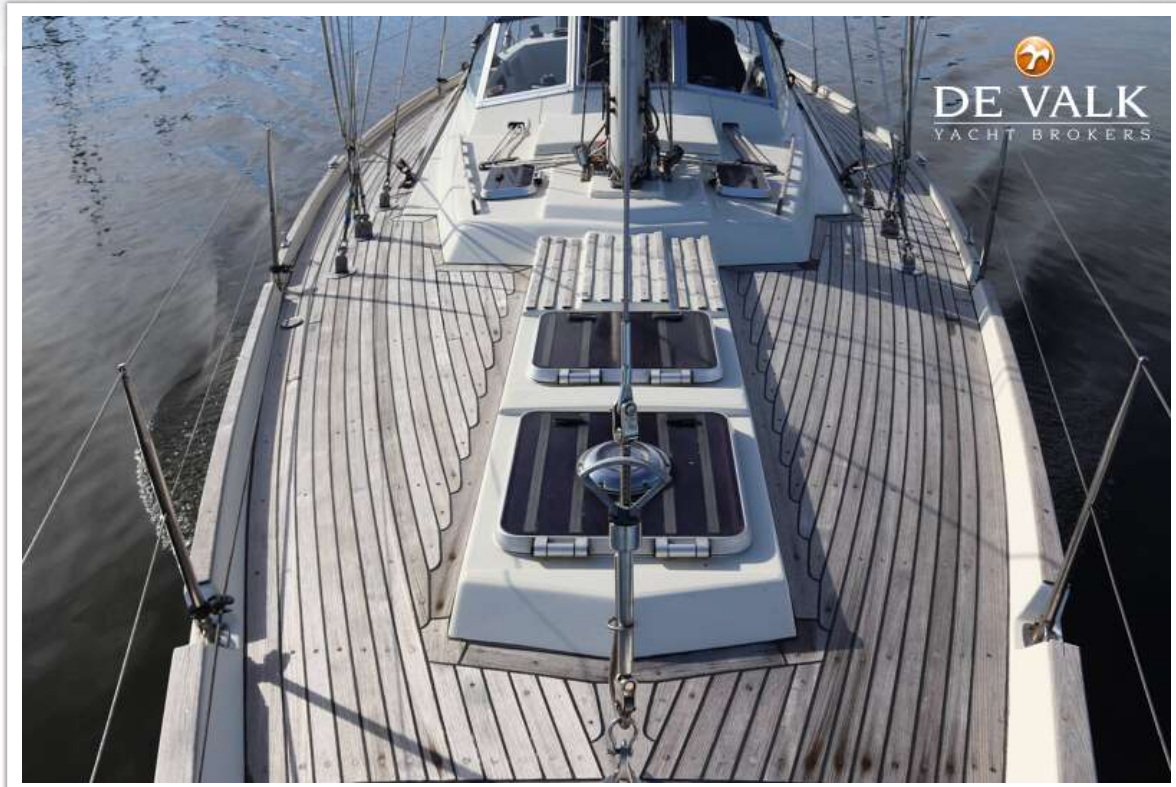
CONTEST 38S



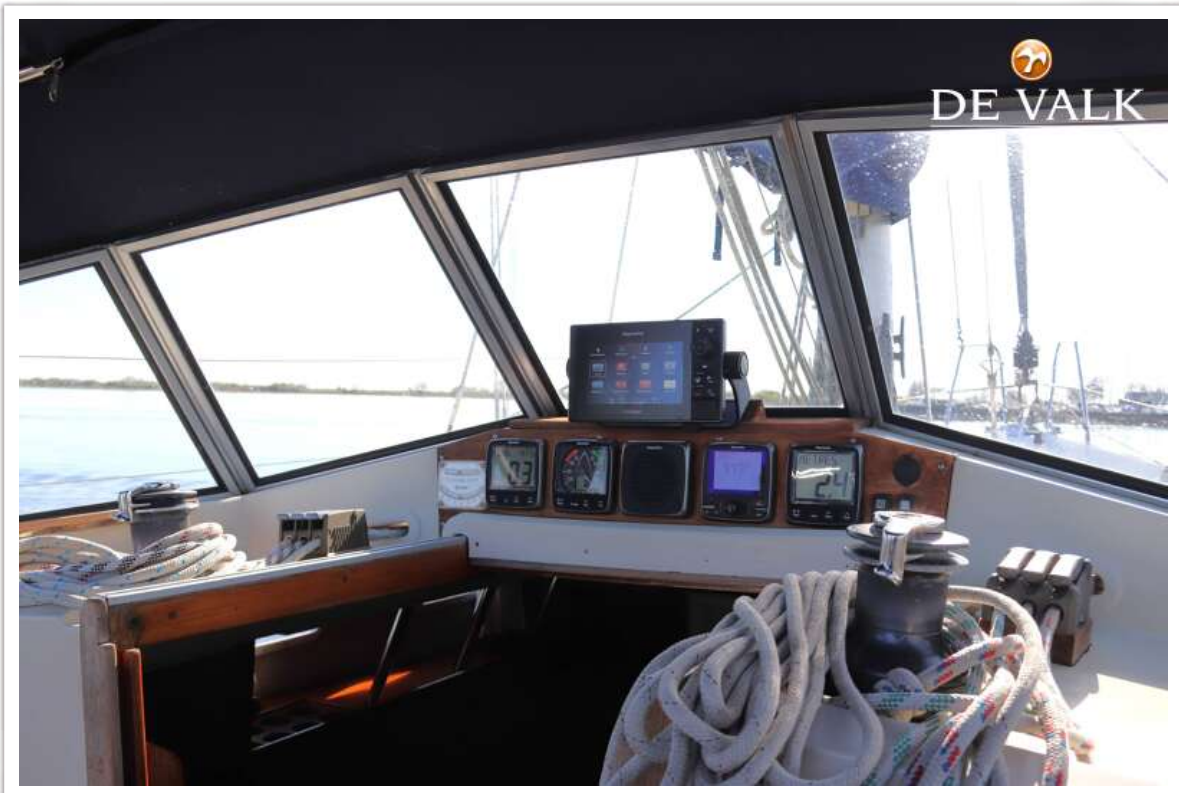
CONTEST 38S



CONTEST 38S



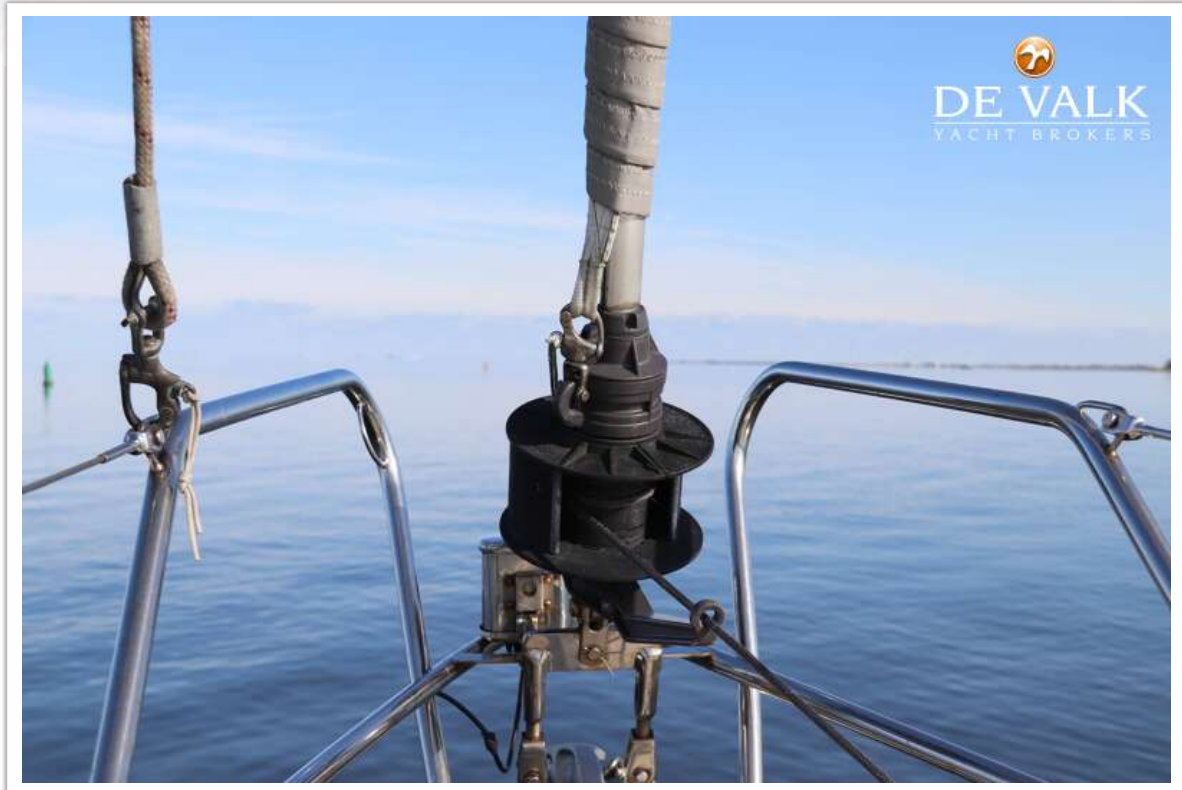
CONTEST 38S



CONTEST 38S



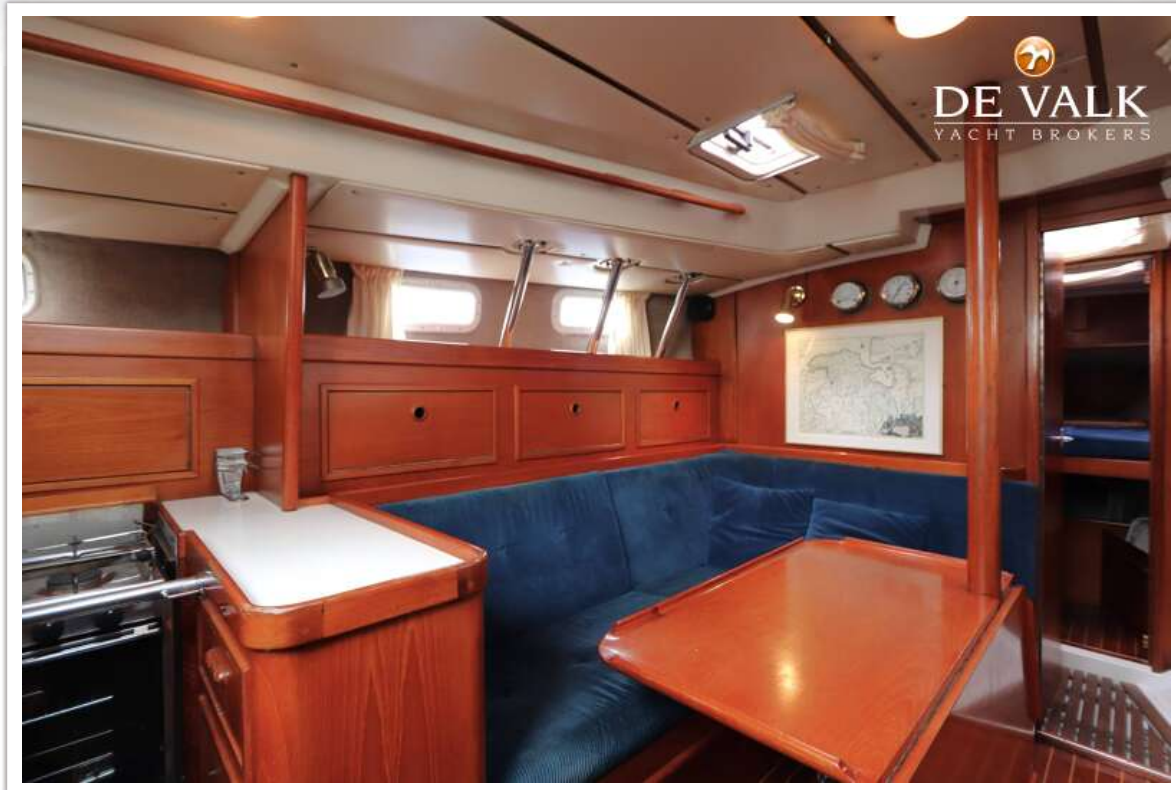
CONTEST 38S



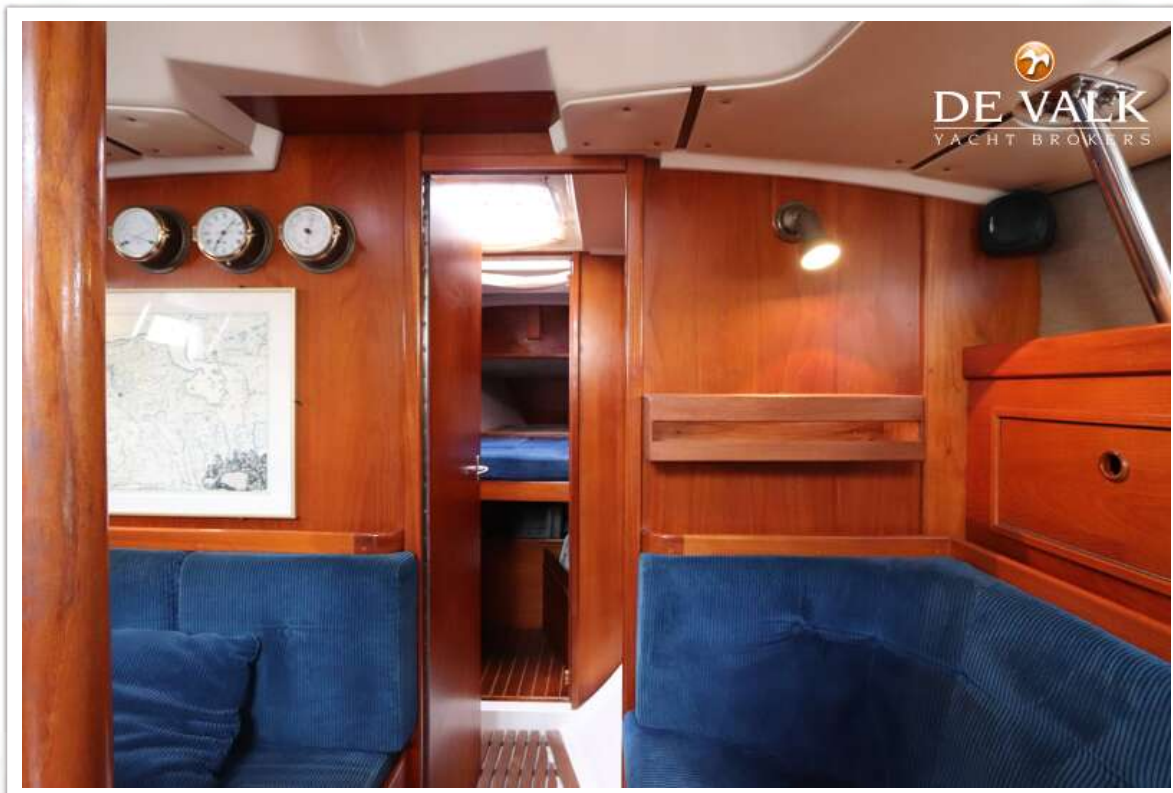
CONTEST 38S



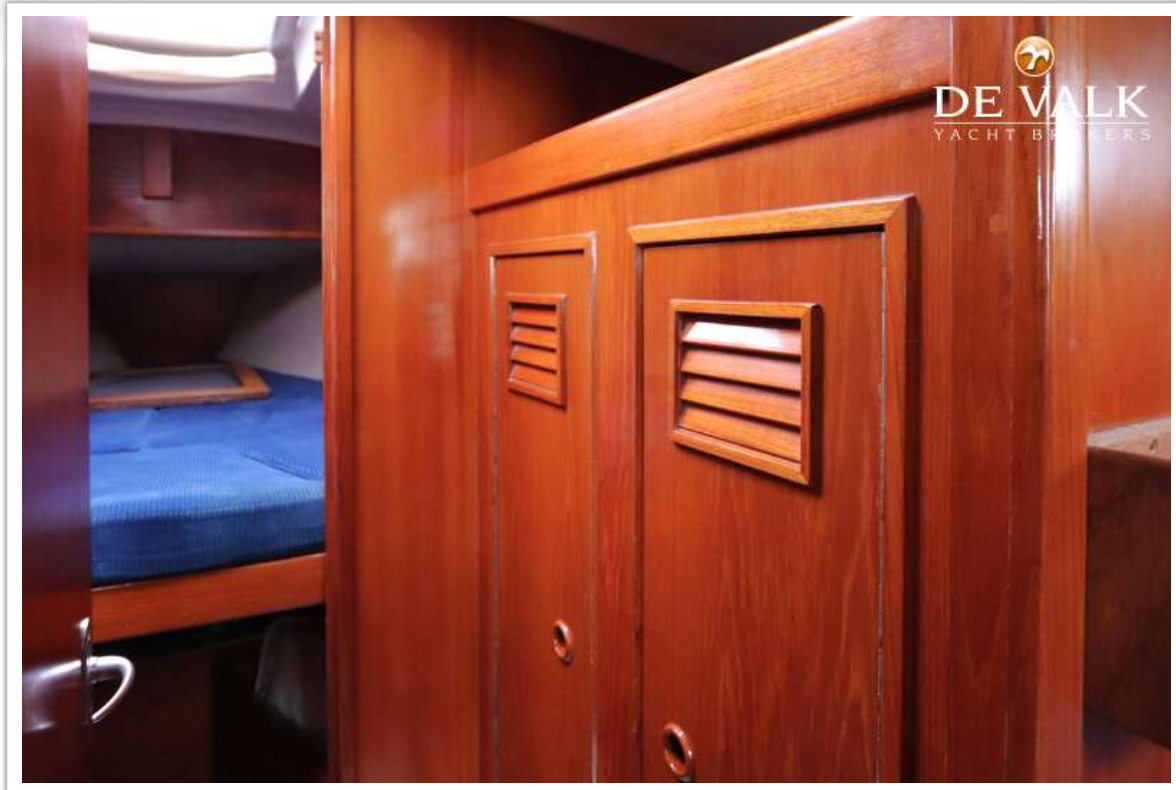
CONTEST 38S



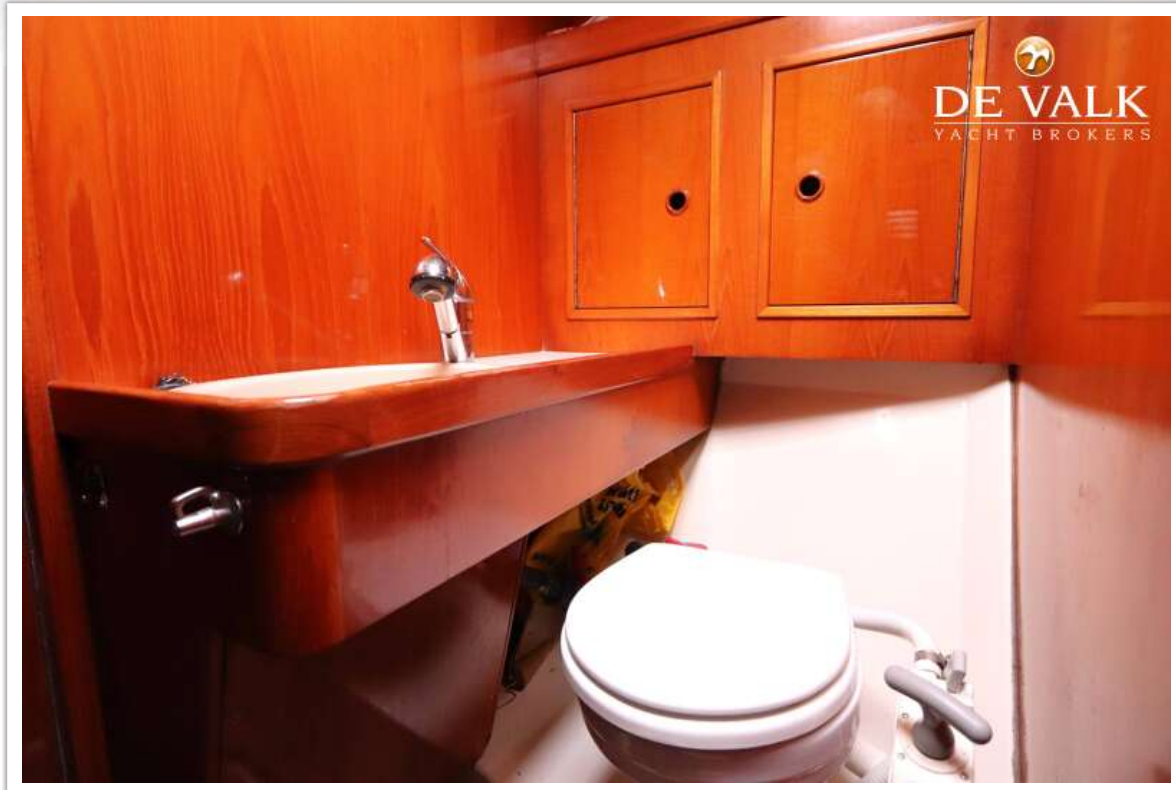
CONTEST 38S



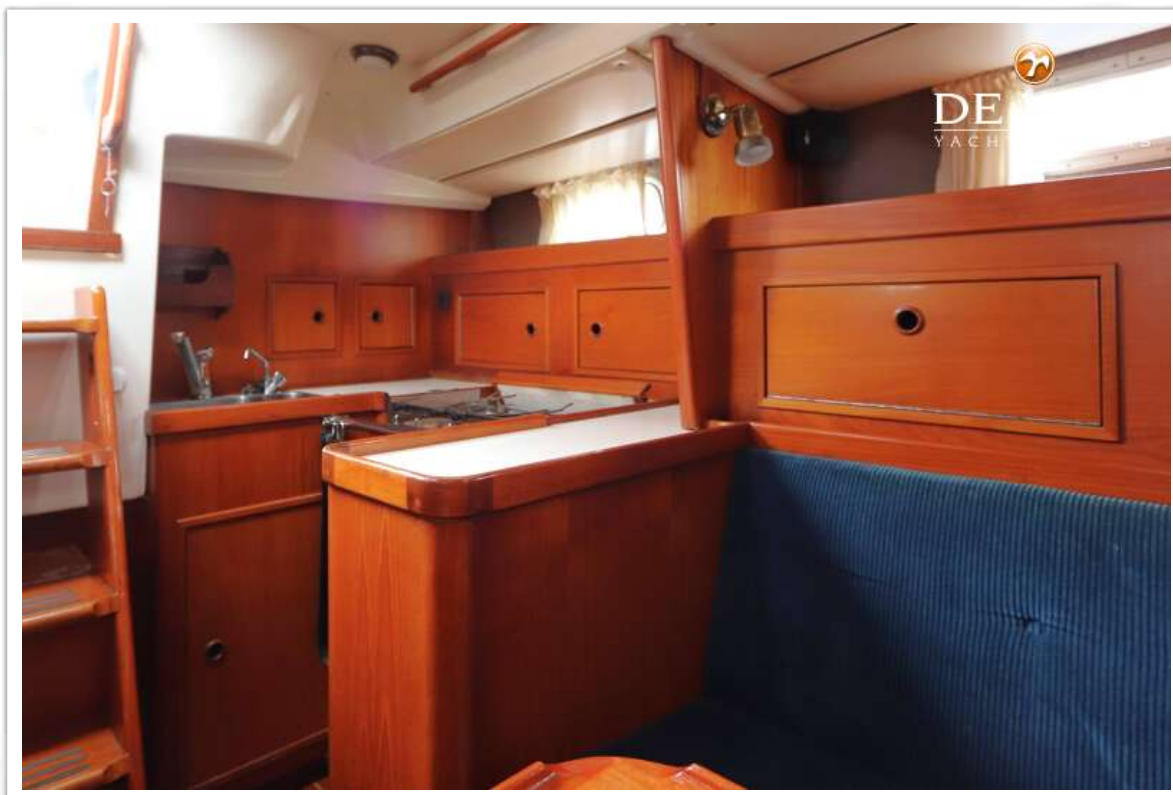
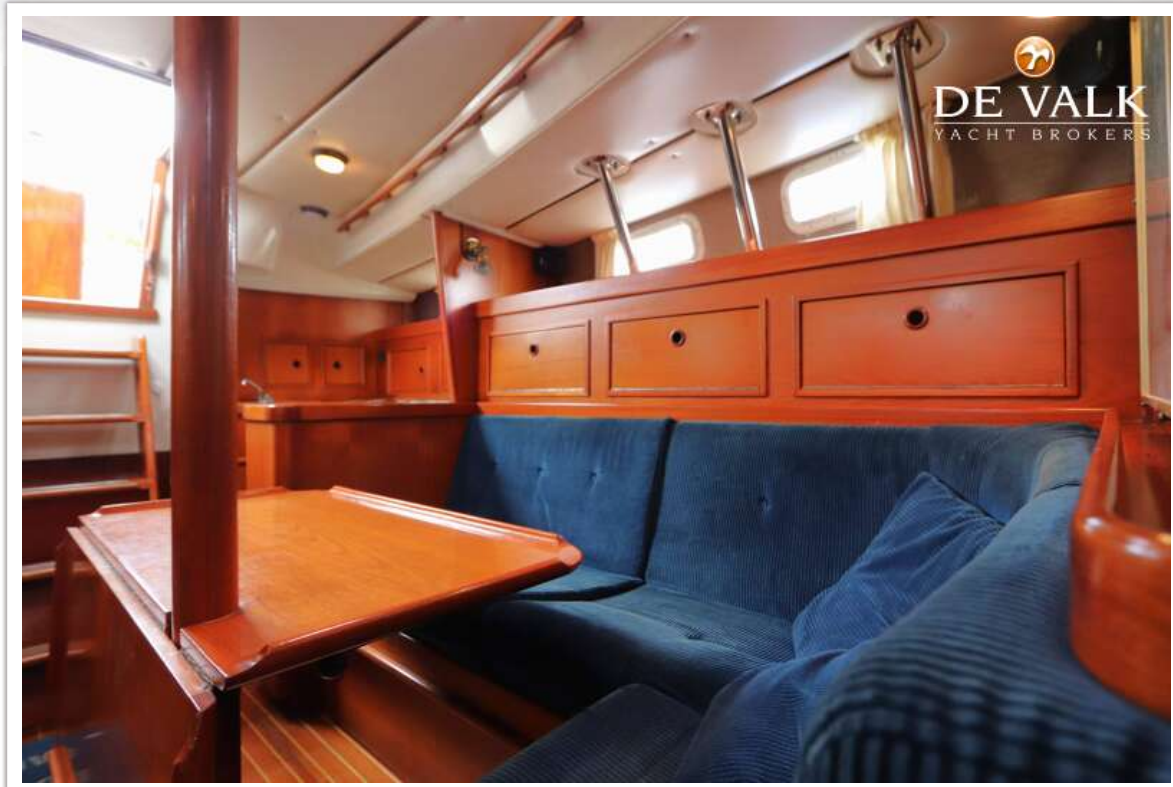
CONTEST 38S



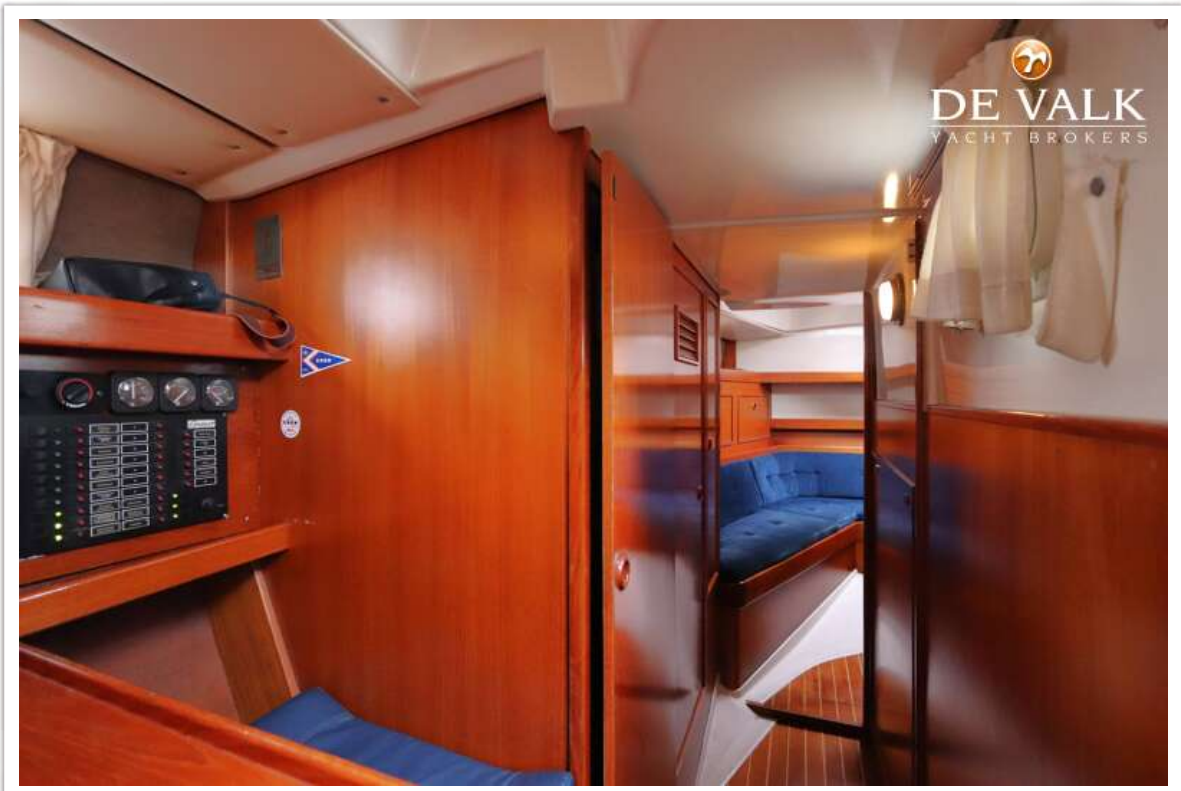
CONTEST 38S



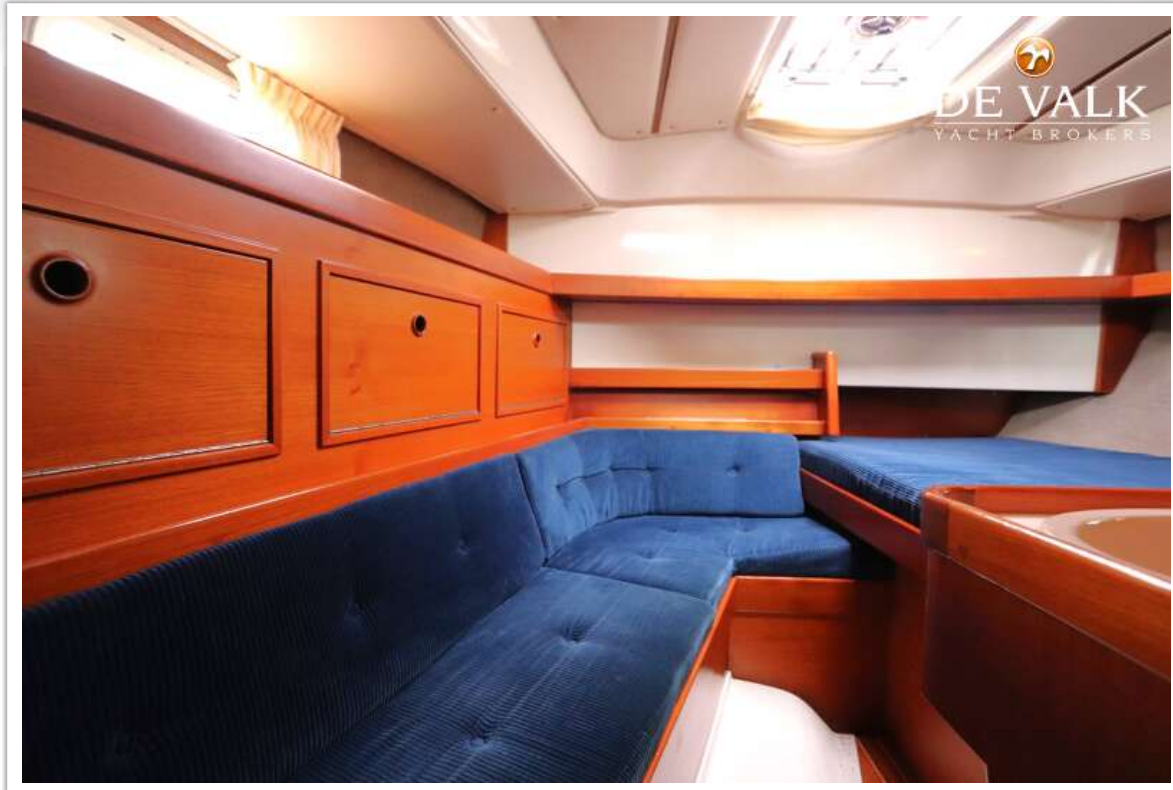
CONTEST 38S



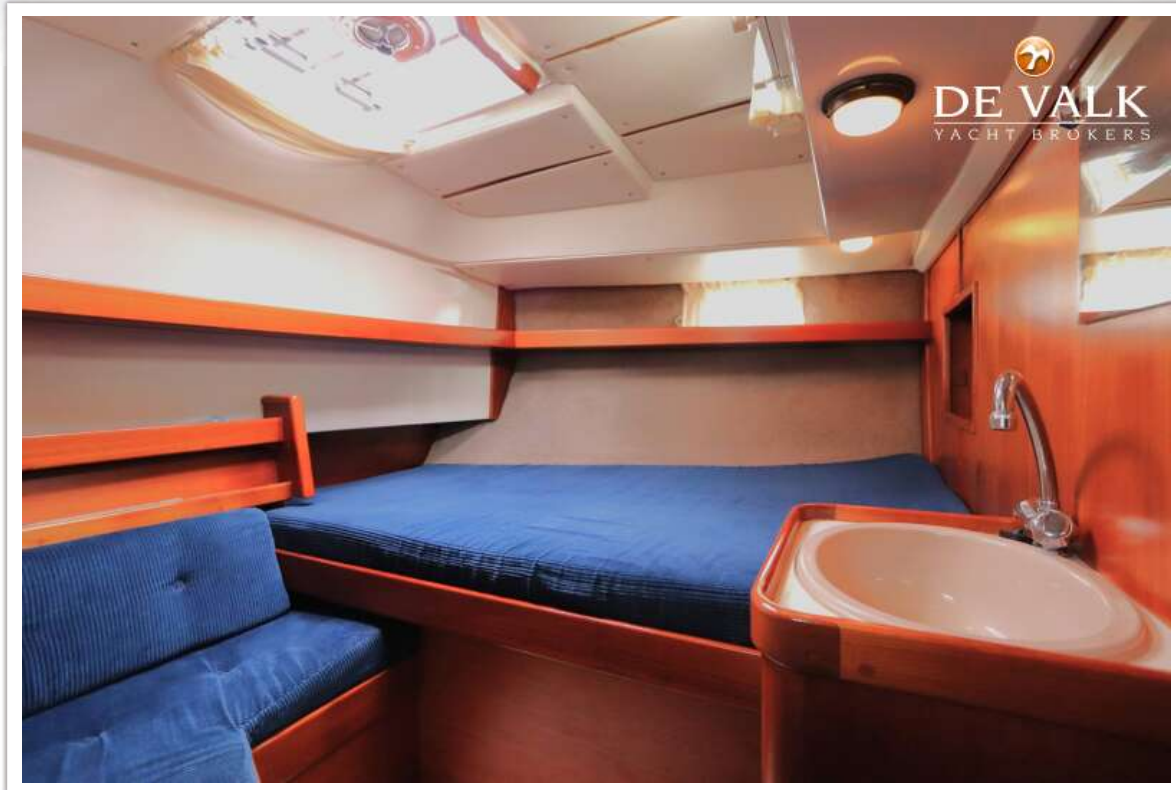
CONTEST 38S



CONTEST 38S



CONTEST 38S



CONTEST 38S

