



DE VALK
YACHT BROKERS



ISLAND PACKET 370



DE VALK
YACHT BROKERS

ISLAND PACKET 370

BROKER'S COMMENTS

The Island Packet range is quite unique. Their designer Bob Johnson succeeded in designing a well balanced cruising yacht. A host of exclusive design features, including our self tending staysail, geared steering system and time honored Full Foil Keel®, all combine to provide superior sea keeping and delightful sailing qualities that will be appreciated as much by the weekend sailor as by the couple cruising the world.

Johan Schootstra

SPECIFICATIONS

Dimensions	11.53 x 3.99 x 1.29 (m)	Builder	Island Packet Yachts
Built	2005	Cabins	2
Material	GRP	Berths	7
Engine(s)	1 x Yanmar 4 JH 3 BE Diesel	Hp/Kw	56.00 (hp), 41.16 (kw)
Asking price	sold (VAT)	Lying	contact Hindeloopen

CONTACT

Sales office	De Valk Hindeloopen	Telephone	+31 514 52 40 00
Address	Oosterstrand 1 8713 JS Hindeloopen The Netherlands	E-mail	hindeloopen@devalk.nl

DISCLAIMER

These particulars are given in good faith as supplied but cannot be guaranteed.



ISLAND PACKET 370

GENERAL

Model	ISLAND PACKET 370
Type	sailing yacht
LOA (m)	11,53
LWL (m)	9,45
Beam (m)	3,99
Draft (m)	1,29
Air draft (m)	16,55
Headroom (m)	1,96
Year built	2005
Builder	Island Packet Yachts
Country	U.S.A.
Designer	Bob Johnson/ IPY Design
Displacement (t)	9,525
Ballast (tonnes)	3,81
CE norm	A
Hull material	GRP
Hull colour	off-white
Hull shape	roundbilged
Keel type	Full foil keel
Superstructure material	GRP
Deck material	GRP
Deck finish	anti-slip paint
Superstructure deck finish	anti-slip paint
Cockpit deck finish	anti-slip paint
Window frame	stainless steel
Window material	Toughened glass windows
Fuel tank (litre)	stainless steel 284
Level indicator (fuel tank)	yes
Freshwater tank (litre)	stainless steel 606
Level indicator (freshwater)	yes



ISLAND PACKET 370

Blackwater tank (litre)	208
Wheel steering	mechanical Whitlock
Emergency tiller	yes

ACCOMMODATION

Cabins	2
Berths	7
Interior	teak
Floor	teak and holly
Open cockpit	yes
Saloon	yes
Headroom saloon (m)	1,96
Chart table	yes
Aft Cabin	yes
Galley	yes
Countertop	corian
Sink	stainless steel Double
Cooker	Force 10 three burner gas stove
Oven	yes
Microwave	Origo
Fridge	Isotherm 3701 ASU fridge
Hot water system	220V + engine
Water pressure system	electrical
Owners cabin	double bed
Wardrobe	hanging and drawers
Bathroom	en suite
Toilet	en suite
Wash basin	in the bathroom
Guest cabin 1	double bed
Wardrobe	hanging and drawers
Bathroom	shared



Toilet	shared
Wash basin	in the bathroom

MACHINERY

No of engines	1
Make	Yanmar
Type	4 JH 3 BE
HP	56,00
kW	41,16
Fuel	diesel
Year installed	2005
Cruising speed (kn)	7
Consumption (l/hr)	4
Engine hours	165,3
Engine cooling system	Indirect cooling system
Drive	shaft
Engine controls	bowden cable
Gearbox	mechanical
Bowthruster	electric Sidepower 6hp
Gearbox	mechanical
Exhaust	watercooled
Propeller type	fixed
Propeller blades	3
Propeller shaft material	stainless steel
Shaft lubrication	water Stainless water lubricated prop-shaft
Manual bilge pump	yes
Electric bilge pump	yes
Electrical installation	12/220v electrical system
Batteries	4 AGM batteries
Battery charger	Mastervolt automatic battery charger
Shorepower	with cable



NAVIGATION

Compass	Ritchie pedestal compass
Depth sounder	Raymarine ST60+
Log	Raymarine ST60+
Windset	Raymarine ST60+
VHF	Raymarine 215E
Autopilot	Raymarine 6002 Smart autopilot
Radar/GPS/plotter	Raymarine E80 color chart plotter/GPS combined Raymarine radar

EQUIPMENT

Sprayhood	yes
Sprayhood with grab rail	Stainless grab rail
Cockpit cover	yes
Cockpit cushions	yes
Cockpit table	yes
Bathing platform	yes
Boarding ladder	stainless steel
Deck shower	yes
Anchor	18kg Wasi anchor
Anchor chain	With 60mtr stainless steel chain
Windlass	Simpson & Lawrence Sprint 1500 electric anchor winch
Sea railing	stainless steel
Grab rail (superstructure)	teak
Railing side opening gates	yes
Pushpit	yes
Pulpit	yes
Life raft	Seago offshore life raft
Life raft (pers)	4
Lifejackets	yes
Fenders	yes



Mooring lines	yes
Radio-cd player	Sony radio-CD player
Clock - barometer	Plastimo
Fire extinguisher	yes

RIGGING

Rigging	sloop-cutter
Brand mast	Sparcraft Keel-stept
Material mast	aluminum
Spreaders	yes
Mast lowering system	In-mast furling system
Mainsail	Quantum
Stoway mast	yes
Genoa	yes
Genoa furler	Harken
Self tacking jib installation	Furling cutter sail on boom (self tacking)
Reefing System	main in-mast furling
Boomvang	mechanical
Primary sheet winch	1 x 18, 2 x 30 and 2 x 44 Lewmar sheet winches
Halyard winches	3 x 16 Lewmar halyard winches on mast



ISLAND PACKET 370



ISLAND PACKET 370



ISLAND PACKET 370



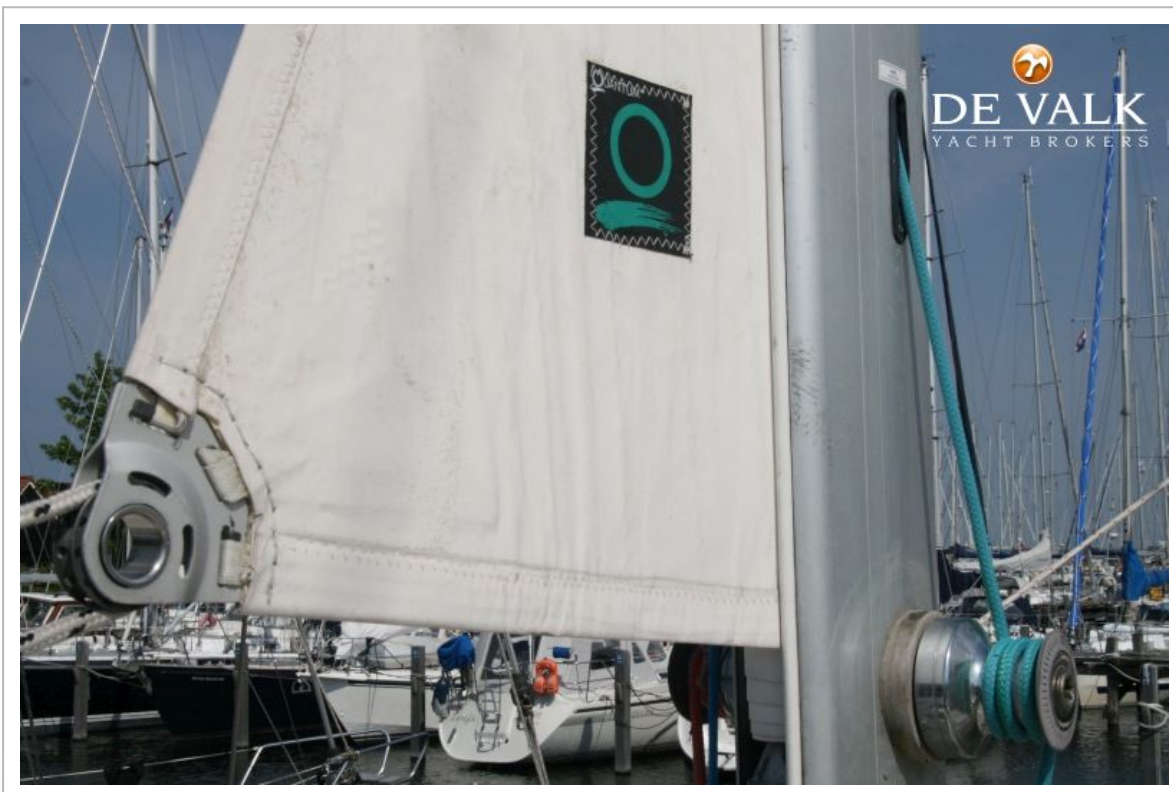
ISLAND PACKET 370



ISLAND PACKET 370



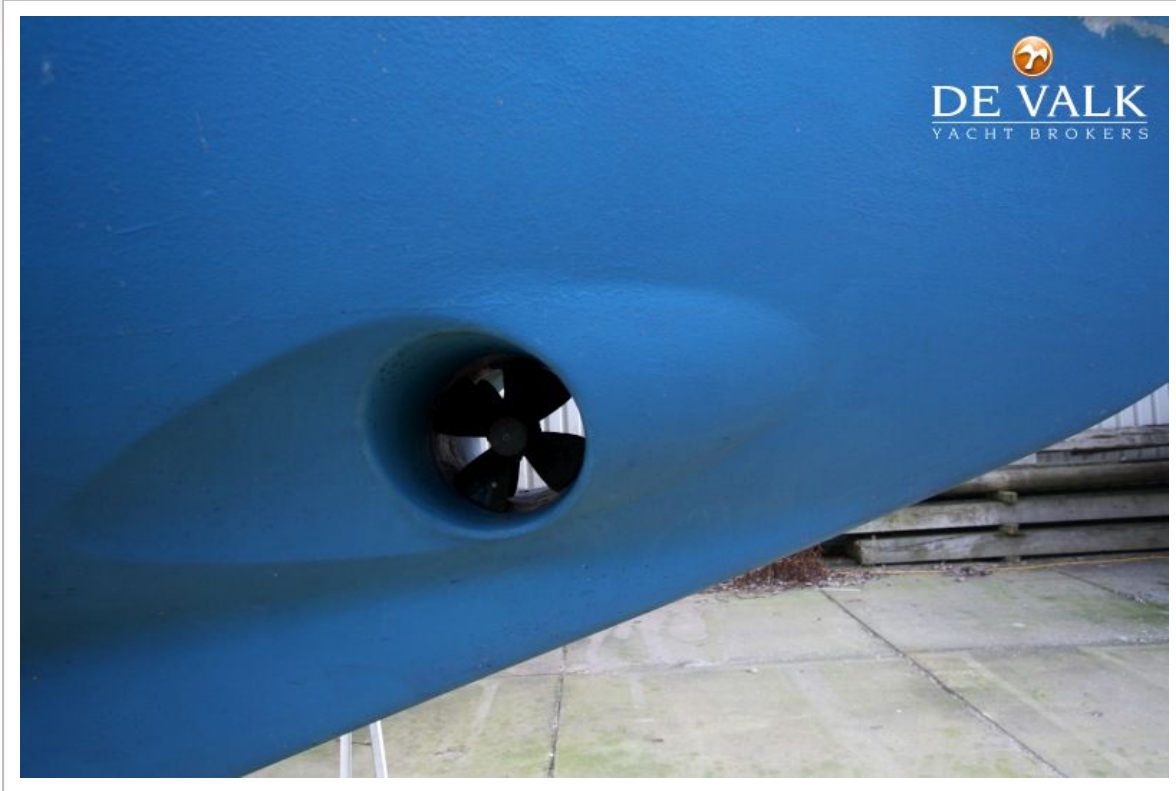
ISLAND PACKET 370



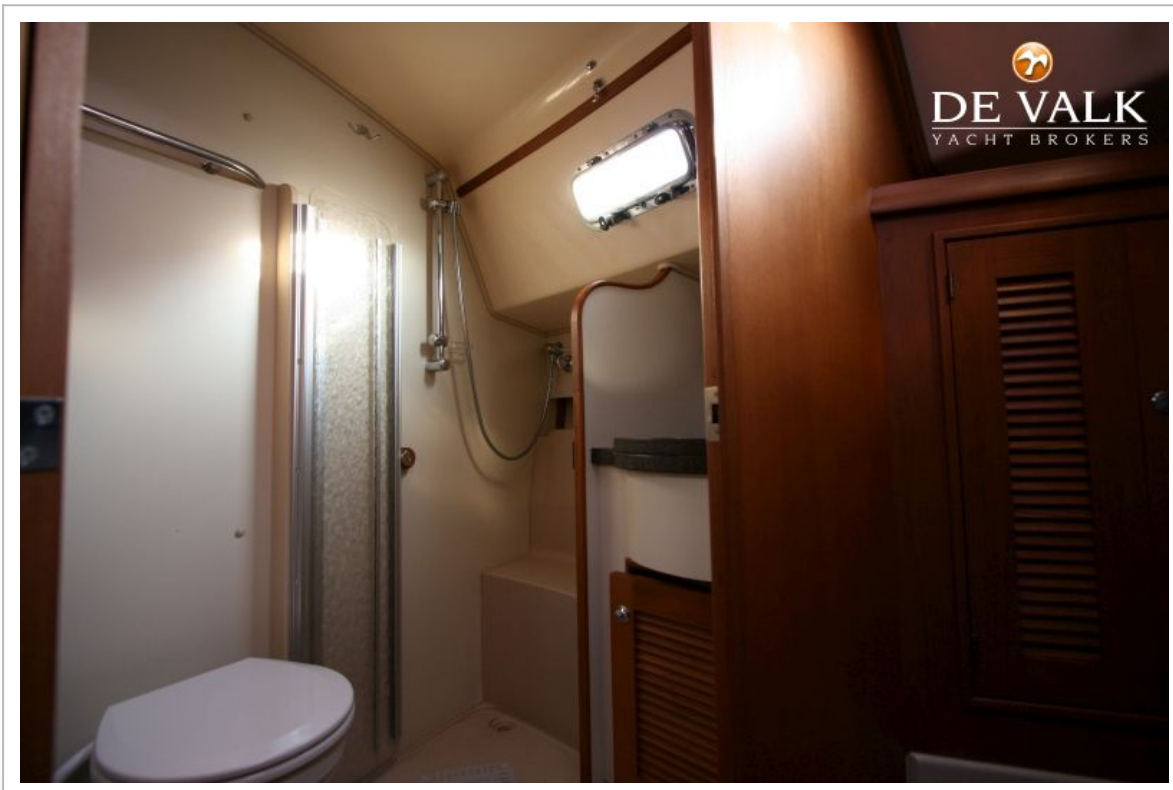
ISLAND PACKET 370



ISLAND PACKET 370



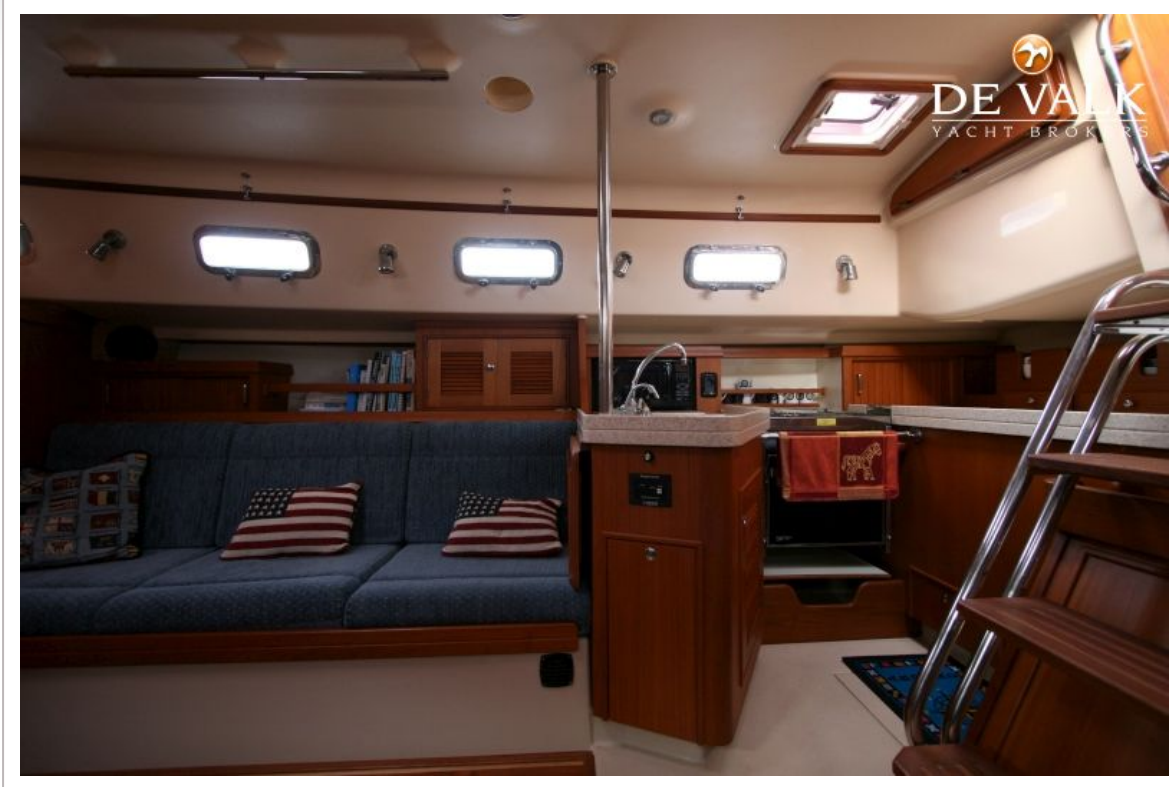
ISLAND PACKET 370



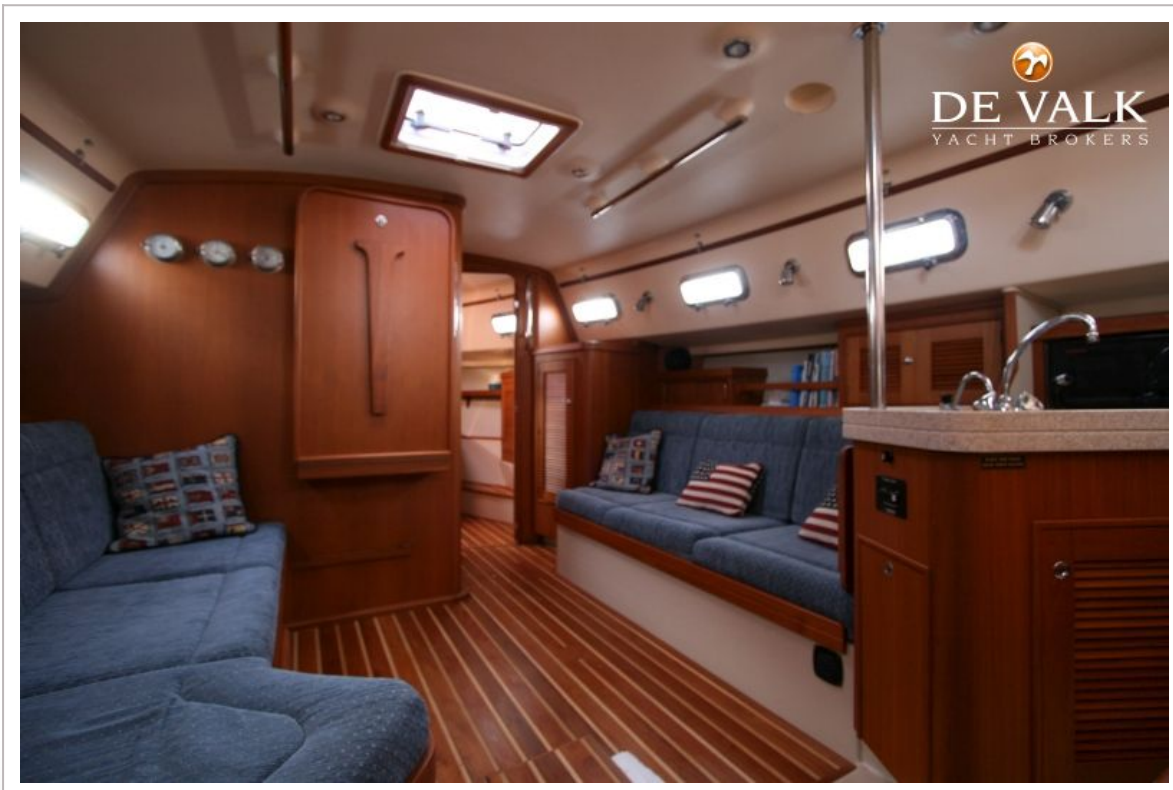
ISLAND PACKET 370



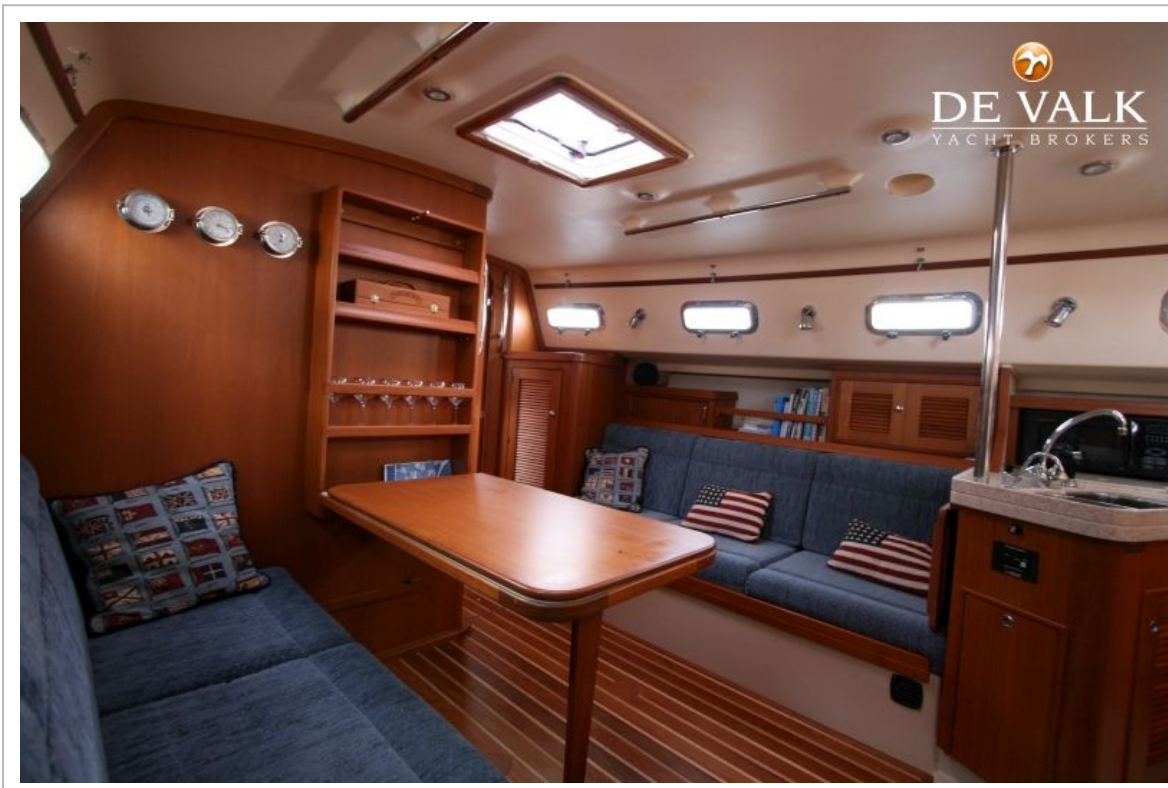
ISLAND PACKET 370



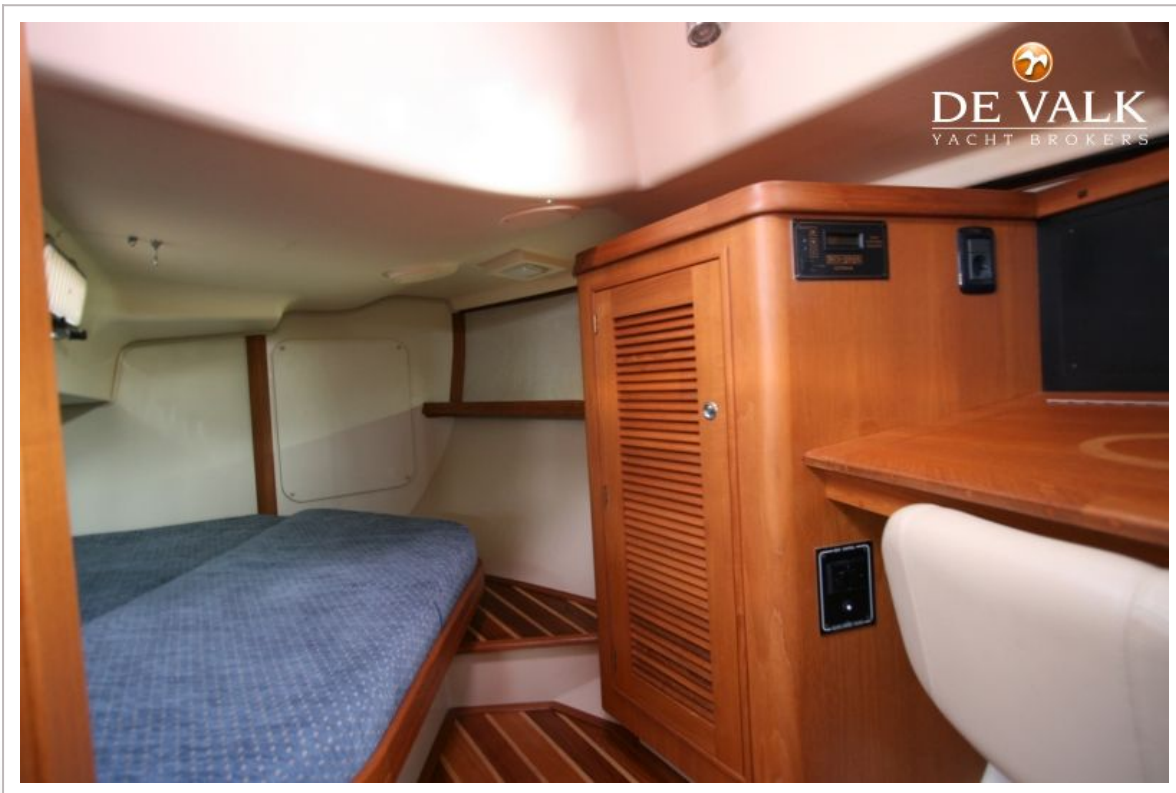
ISLAND PACKET 370



ISLAND PACKET 370



ISLAND PACKET 370



ISLAND PACKET 370

