



DE VALK
YACHT BROKERS



KOOPMANS 48



DE VALK
YACHT BROKERS

BROKERAGE | CHARTER | BERTHS | FINANCE | INSURANCE | YACHT MANAGEMENT

BROKER'S COMMENTS

Probably the most acknowledged yacht designer from the Netherlands, Dick Koopmans Sr. designs from first hand experience. He has cruised the world himself, and that shows in his excellent seaworthy designs. With her predominant design features (like sheer line, flush decks, displacement hull, etc), one can instantly recognize these excellent yachts.

Johan Nooitgedagt

SPECIFICATIONS

Dimensions	14.50 x 3.96 x 1,30 / 2.70 (m)	Builder	Aluboot Hindeloopen
Built	1992	Cabins	2
Material	Aluminium	Berths	6
Engine(s)	1 x Volvo penta MD 40 diesel	Hp/Kw	85.00 (hp), 62.48 (kw)
Asking price	sold (VAT)	Lying	contact Hindeloopen

CONTACT

Sales office	De Valk Hindeloopen B.V.	Telephone	+31 514 52 40 00
Address	Oosterstrand 1 8713 JS Hindeloopen NL	E-mail	hindeloopen@devalk.nl

DISCLAIMER

These particulars are given in good faith as supplied but cannot be guaranteed.



GENERAL

Model	KOOPMANS 48
Type	sailing yacht
LOA (m)	14,50
Beam (m)	3,96
Draft (m)	2,70
Draft min (m)	1,30
Air draft (m)	19,00
Headroom (m)	1,92
Year built	1992
Builder	Aluboot Hindeloopen
Country	The Netherlands
Designer	Koopmans
Displacement (t)	16
Ballast (tonnes)	lead
Hull material	aluminium
Hull colour	blue
Hull thickness (mm)	6
Hull shape	S-bilged
Keel type	centreboard
Superstructure material	aluminium
Superstructure (mm)	5
Deck material	aluminium
Deck finish	synthetic teak
Cockpit deck finish	teak
Antifouling (year)	2015
Dorades	yes
Deckhatch	Lewmar 5x
Insulation	foam
Radar arch	non collapsible
Fuel tank (litre)	aluminium 1 x 750



Level indicator (fuel tank)	yes
Fuel daytank (litre)	aluminium 1 x 80
Freshwater tank (litre)	aluminium 2 x 375
Level indicator (freshwater)	yes
Greywater tank (litre)	aluminium 1 x 250
Wheel steering	hydraulic
Inside helm position	yes
Outside helm position	mechanical
Emergency tiller	yes

ACCOMMODATION

Cabins	2
Berths	6
Interior	teak
Floor	teak
Pilot house	yes
Pilot house/deck saloon	yes
Headroom saloon (m)	1,95
Heating	central hot water Webasto
Galley	yes
Countertop	corian
Sink	stainless steel Double
Cooker	calor gas
Oven	yes
Gas alarm	yes
Fridge	with freezer compartment
Hot water system	220V + engine
Water pressure system	manual
Manual and/or foot pump	yes
Crockery	yes
Owners cabin	v-bed



Bed length (m)	1,90
Wardrobe	hanging and drawers
Bathroom	en suite
Toilet	shared
Toilet system	manual
Wash basin	in the cabin
Shower	separate
Guest cabin 1	double bed + single bed
Bed length (m)	1,90
Wardrobe	hanging and drawers
Toilet	shared
Toilet system	manual
Wash basin	at the toilet
Shower	shared

MACHINERY

No of engines	1
Make	Volvo penta
Type	MD 40
HP	85,00
kW	62,48
Fuel	diesel
Year installed	1992
Maximum speed (kn)	8
Cruising speed (kn)	6
Engine cooling system	freshwater heat exchanger
Drive	shaft
Engine controls	bowden cable
Gearbox	hydraulic
Bowthruster	electric
Thrust bearing	yes



Propeller type	folding
Propeller blades	3
Propeller shaft material	stainless steel
Shaft lubrication	water
Manual bilge pump	yes
Electric bilge pump	yes
Generator	wet exhaust Fischer panda
Running hours generator	366
Start battery	yes
Service battery	yes
Generator battery	yes
Windlass battery	yes
Battery monitor	yes
Battery charger/inverter	yes
Shorepower	with cable

NAVIGATION

Compass	yes
Depth sounder	B & G
Log	B & G
Windset	B & G
Repeater	B & G
VHF	Shipmate
Autopilot	Autohelm 6000
GPS	Raytheon
Plotter	VDO
Weather receiver	SSB - Sailor
Transmitter	SSB
Loudhailer	yes

EQUIPMENT



Fixed windscreen	yes
Sprayhood	yes
Cockpit cover	yes
Sun awning	yes
Cockpit cushions	yes
Cockpit table	yes
Boarding ladder	stainless steel
Anchor	CQR Plough
Anchor chain	yes
Anchor 2	Fortress
Windlass	electrical
Deck wash	yes
Outboard support	yes
Sea railing	wire
Railing side opening gates	yes
Pushpit	yes
Pulpit	yes
Life raft	valise (or bag)
Life raft (pers)	4
Lifejackets	yes
Safety harness	yes
Wiper	yes
Radar reflector	yes
Fenders	yes
Mooring lines	yes
Spare parts	yes
Tools	yes
Radio-cd player	yes
Cockpit speakers	yes
Speakers in salon	yes
Clock - barometer	Wempe
Fire extinguisher	yes



RIGGING

Rigging	sloop-cutter
Standing rigging	wire
Brand mast	Proctor
Material mast	aluminium
Spreaders	2 pair
Mainsail	yes
Mainsail cover	yes
Battcars	yes
Cutterstay	yes
Jib	30 m2
Genoa I	86 m2
Gennaker	yes
Stormjib	yes
Reefing System	quick-one-line-reefing
Backstay adjuster	mechanical
Boomvang	mechanical
Primary sheet winch	3x Lewmar 46 ST Electric
Secondary sheet winch	2x Lewmar 55 ST
Genoa sheetwinches	2x Lewmar 43 ST
Halyard winches	2x Lewmar 44 ST
Reefing winch	1x Lewmar 40 ST
Multifunctional winches	1x Lewmar 30 ST
Spi-pole	aluminium













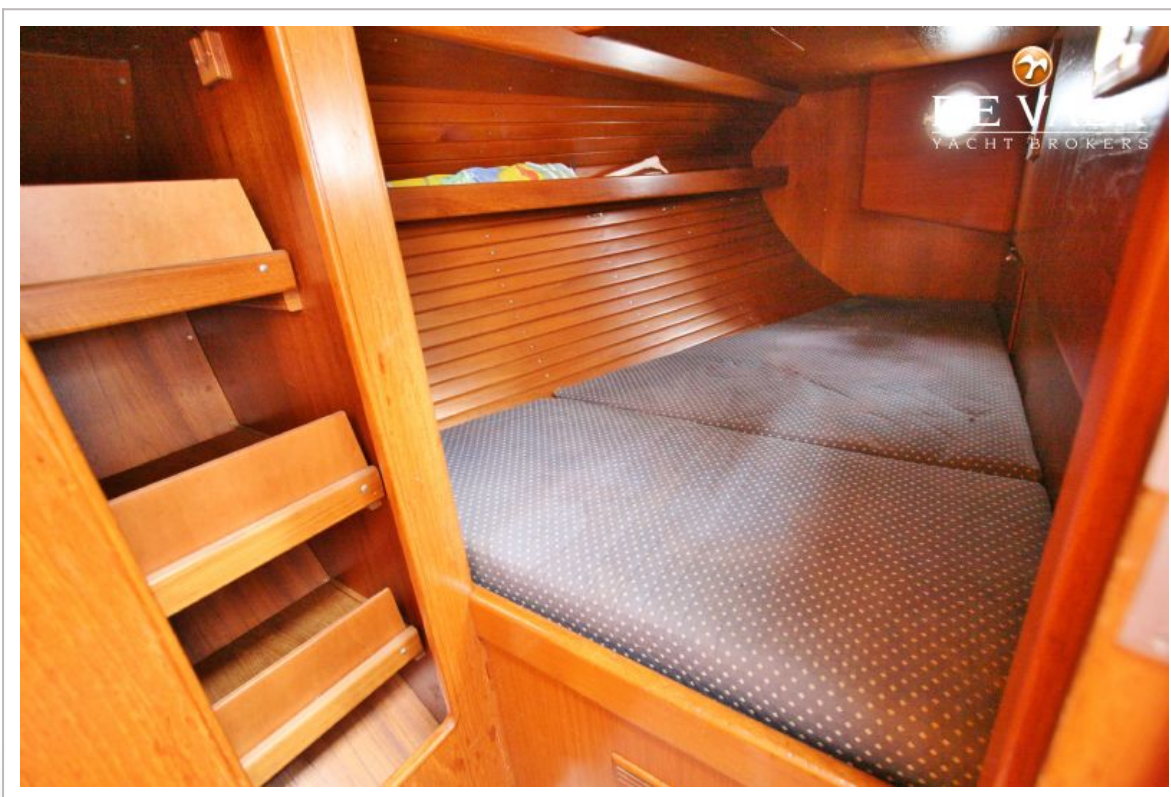
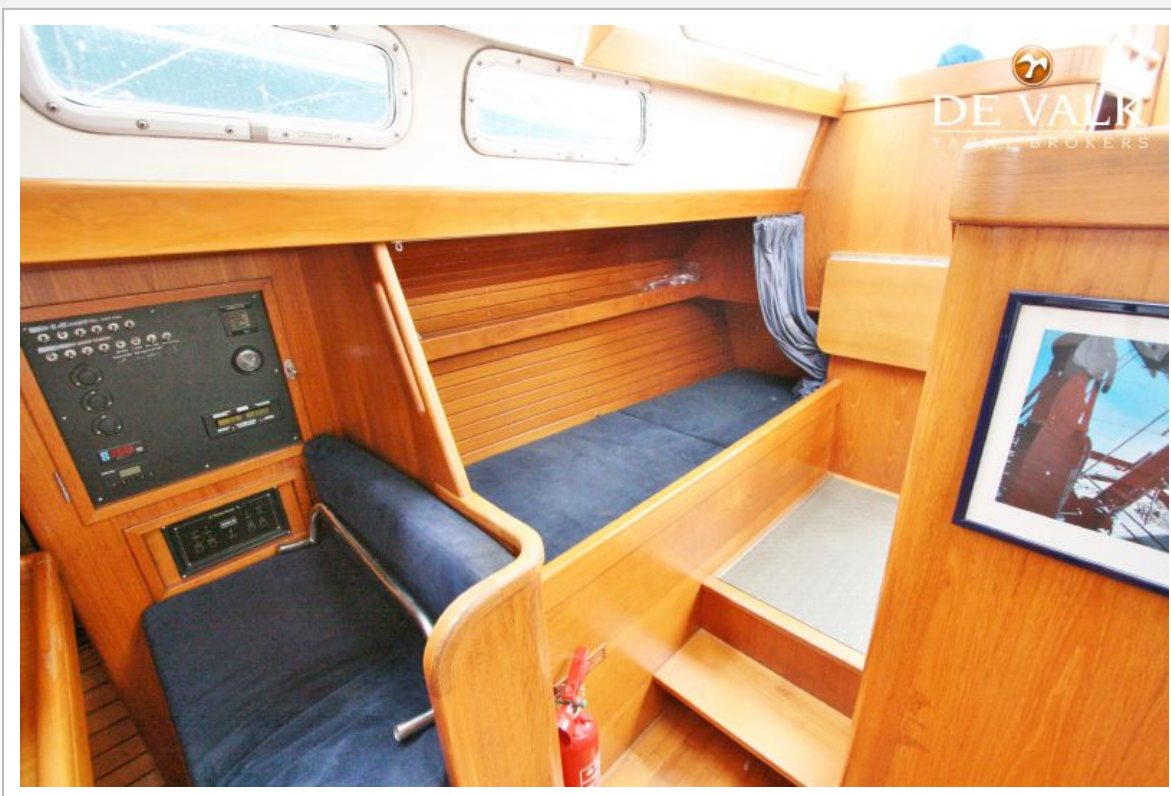
KOOPMANS 48

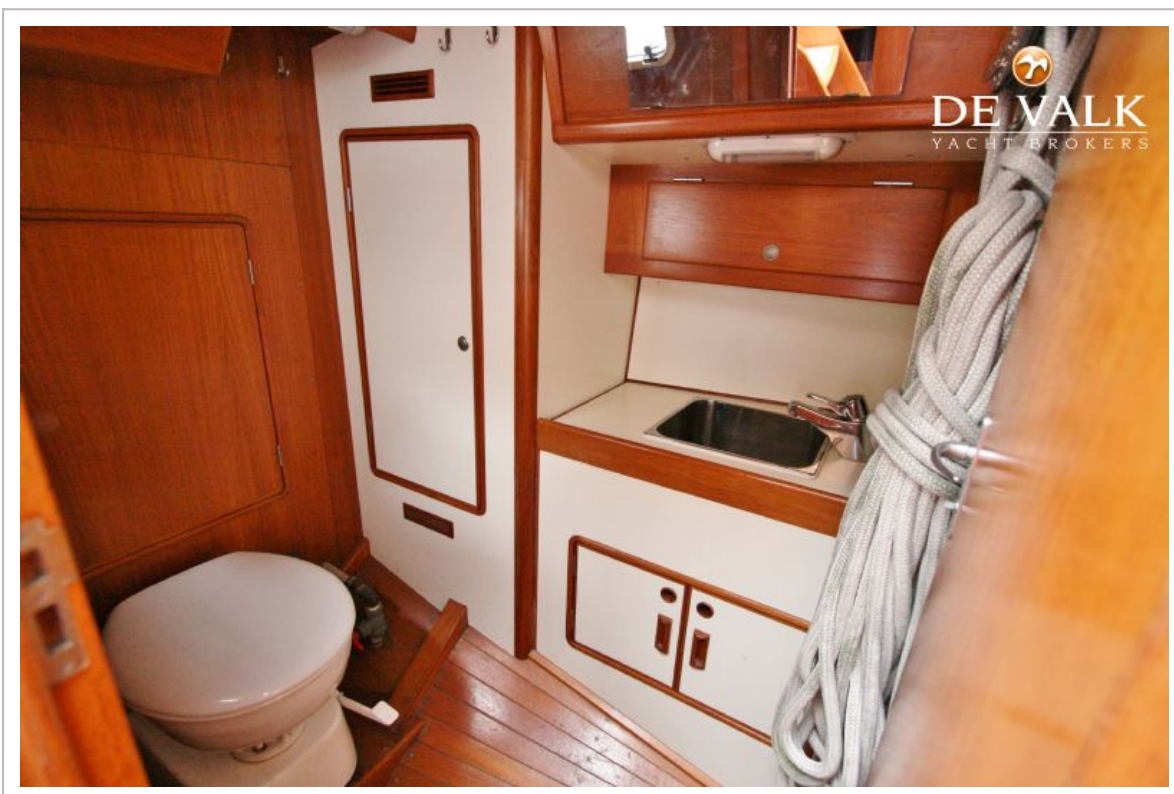












KOOPMANS 48

