



DE VALK
YACHT BROKERS



TRINTELLA 38



DE VALK
YACHT BROKERS

TRINTELLA 38

BROKER'S COMMENTS

The Trintella 38 is the professional result of the cooperation between the yacht designer Mr. E.G. van de Stadt and the former yard Anne Wever b.v. The admirable ship has an under deck walkway creating considerable space which is noticeable throughout the vessel. The Trintella is a yacht without compromises; its a comfortable yacht for offshore and long distance sailing. Complete with a brand new Volvo Penta D-55 diesel engine! Teak deck renovated in 1999 and well maintained since by current owner.

Reinier van der Wolf

SPECIFICATIONS

Dimensions	11.55 x 3.70 x 1.90 (m)	Builder	Anne Wever - Workum
Built	1976	Cabins	2
Material	GRP	Berths	5
Engine(s)	1 x Volvo Penta D-55 diesel	Hp/Kw	55.00 (hp), 40.42 (kw)
Asking price	sold (VAT)	Lying	contact Monnickendam

CONTACT

Sales office	De Valk Monnickendam B.V.	Telephone	+31 (0)299 65 63 50
Address	Hoogedijk 6 1145 PM Katwoude NL	E-mail	monnickendam@devalk.nl

DISCLAIMER

These particulars are given in good faith as supplied but cannot be guaranteed.



GENERAL

Model	TRINTELLA 38
Type	sailing yacht Sailing yacht
LOA (m)	11,55
LWL (m)	9,00
Beam (m)	3,70
Draft (m)	1,90
Air draft (m)	18,50
Year built	1976
Builder	Anne Wever - Workum
Country	The Netherlands
Designer	E.G. van de Stadt
Displacement (t)	10,5
Ballast (tonnes)	4,4
CE norm	A
Hull material	GRP
Hull colour	White
Hull shape	Roundbilged
Keel type	Fin keel
Superstructure material	GRP
Deck material	GRP
Deck finish	Teak
Superstructure deck finish	Teak
Cockpit deck finish	Teak
Window frame	Aluminum
Window material	Perspex
Fuel tank (litre)	Stainless Steel 350
Freshwater tank (litre)	GRP 700
Wheel steering	yes
Emergency tiller	yes
Extra info	Teak deck renovated in 1999 and well maintained since by current owner.



ACCOMMODATION

Cabins	2
Berths	5
Interior	Teak
Saloon	U-shaped settee + bench
Headroom saloon (m)	2,30 / 2,00 m.
Heating	Diesel ducted hot air Webasto Airtop 3500 - 2002
Chart table	yes
Galley	yes
Cooker	Calor gas
Fridge	with freezer compartment Greyline 49 litres - 2002
Hot water system	220v + engine Webasto boiler 40 litres - 2002
Water pressure system	Electrical
Owners cabin	Double bed
Bathroom	yes
Toilet	yes
Toilet system	Manual
Wash basin	yes
Shower	yes
Guest cabin 2	V-bed

MACHINERY

No of engines	1
Make	Volvo Penta
Type	D-55
HP	55,00
kW	40,42
Fuel	diesel
Year installed	2012
Maximum speed (kn)	8
Cruising speed (kn)	7.00



Consumption (l/hr)	5.00
Engine hours	15
Engine cooling system	Freshwater heat exchanger
Drive	shaft
Bowthruster	Vetus 80 kgf - 2003
Gearbox	Hydraulic ZF/HS25A
Propeller blades	3
Propeller shaft material	Stainless steel
Shaft lubrication	water
Manual bilge pump	yes
Electric bilge pump	yes
Electrical installation	12v/220v
Start battery	1x 200 Amp.
Service battery	2x 140 Amp.
Bowthruster battery	1x 80 Amp.
Battery charger	Mastervolt - Mass 12/40 - 1999
Inverter	12/220
Shorepower	yes

NAVIGATION

Compass	2x Plastimo
Windset	Raymarine
VHF	Raymarine DSC type 49E- 2010
Autopilot	Simrad/Robertsen - 2003
Rudder angle indicator	yes
Radar	Raymarine Radome RD 424 + C80 screen + AIS - 2010
GPS	Raymarine - 2010 + Garmin 128 - 2003
Navtex	Navtex CS-4 - 1999
Extra info	ST60 Tridata - 2002

EQUIPMENT



Sprayhood	2003
Cockpit cover	2003
Winter cover	yes
Cockpit table	Teak
Boarding ladder	S/S - 1999
Gangway	yes
Anchor	yes
Anchor chain	Ca. 30 m
Anchor 2	yes
Windlass	Manual Vetus
Davits	yes
Sea railing	Stainless steel
Life raft	2010
Life raft (pers)	6
Last life raft survey	is gekeurd in 2013
Lifebuoy	2x
Safety lines on deck	yes
Spare parts	yes
Radio-cd player	Sharp - 2002
Fire extinguisher	serviced in 2013 4x - 2011
Extra info	Vetus gasdetector

RIGGING

Rigging	Sloop
Material mast	Aluminum
Mainsail	2004
Mainsail cover	yes
High aspect	yes
Genoa	+ UV stroke - 2009
Genoa furler	Furlex - 1999
Primary sheet winch	2x Barlow 33 two speed



Extra info

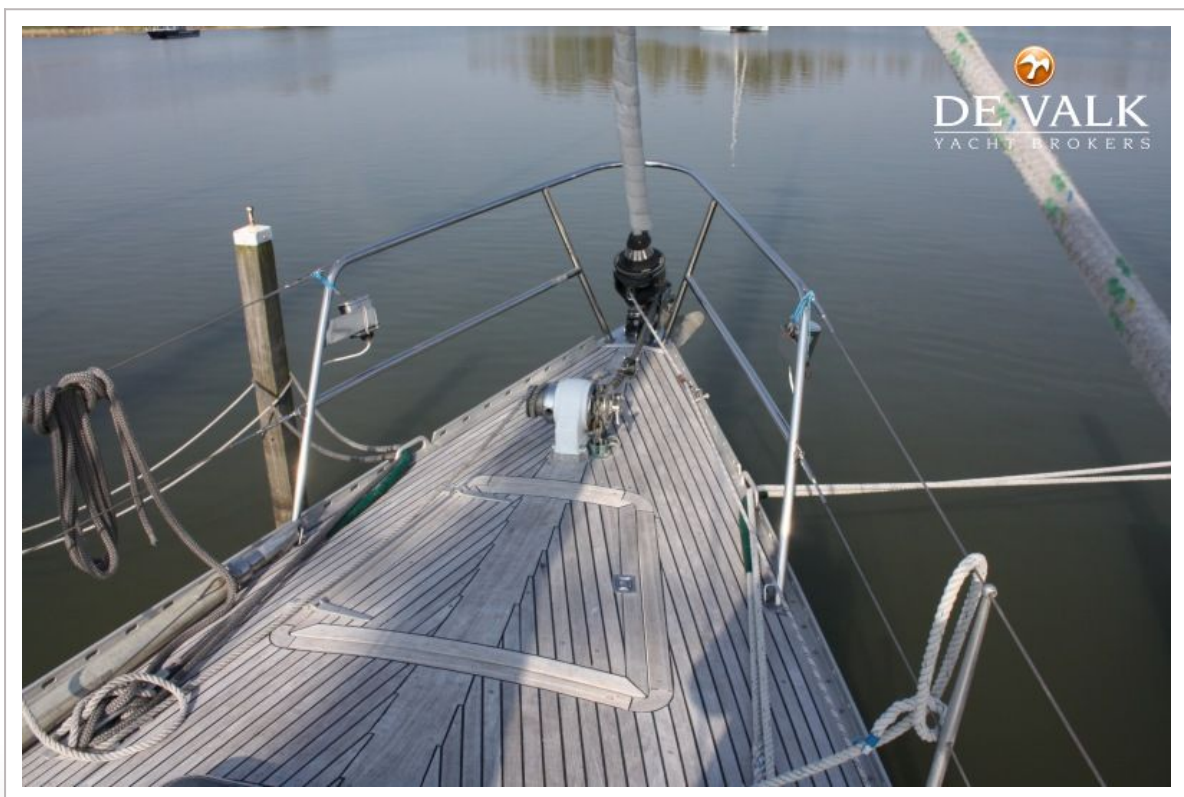
Lazy Jacks - 2000, Half winder.















TRINTELLA 38



TRINTELLA 38



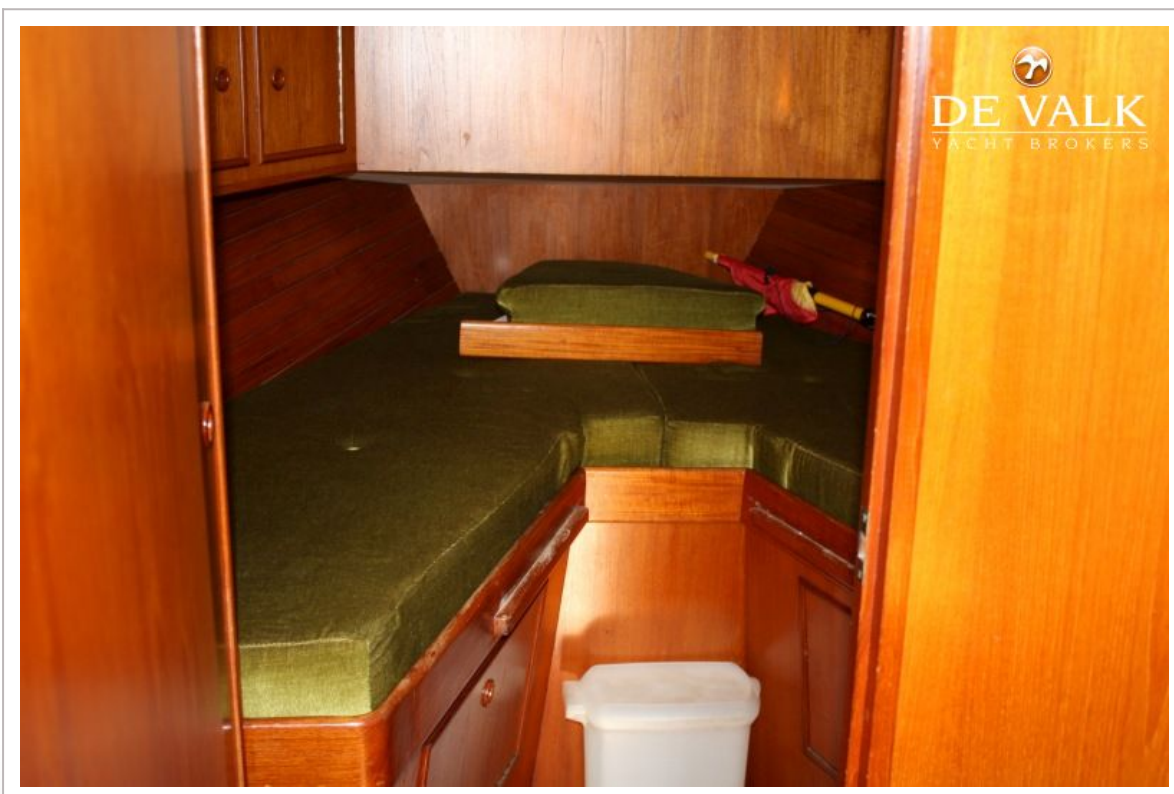
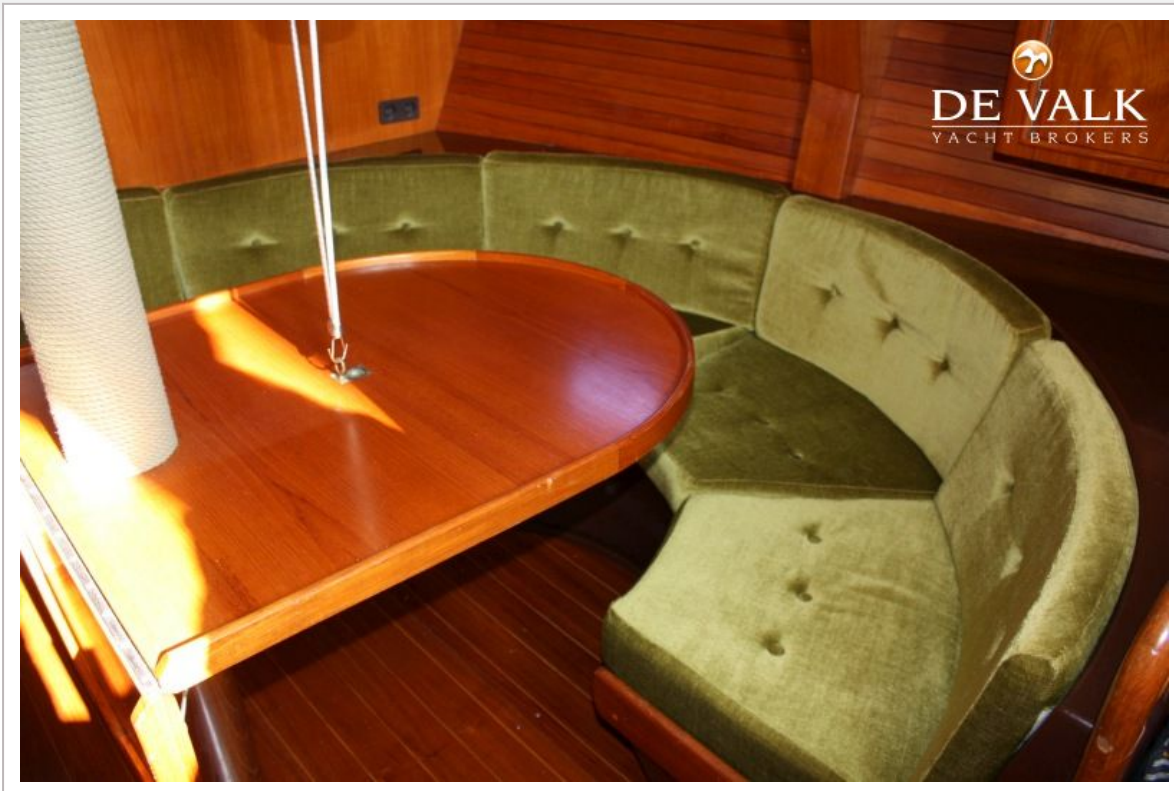
TRINTELLA 38



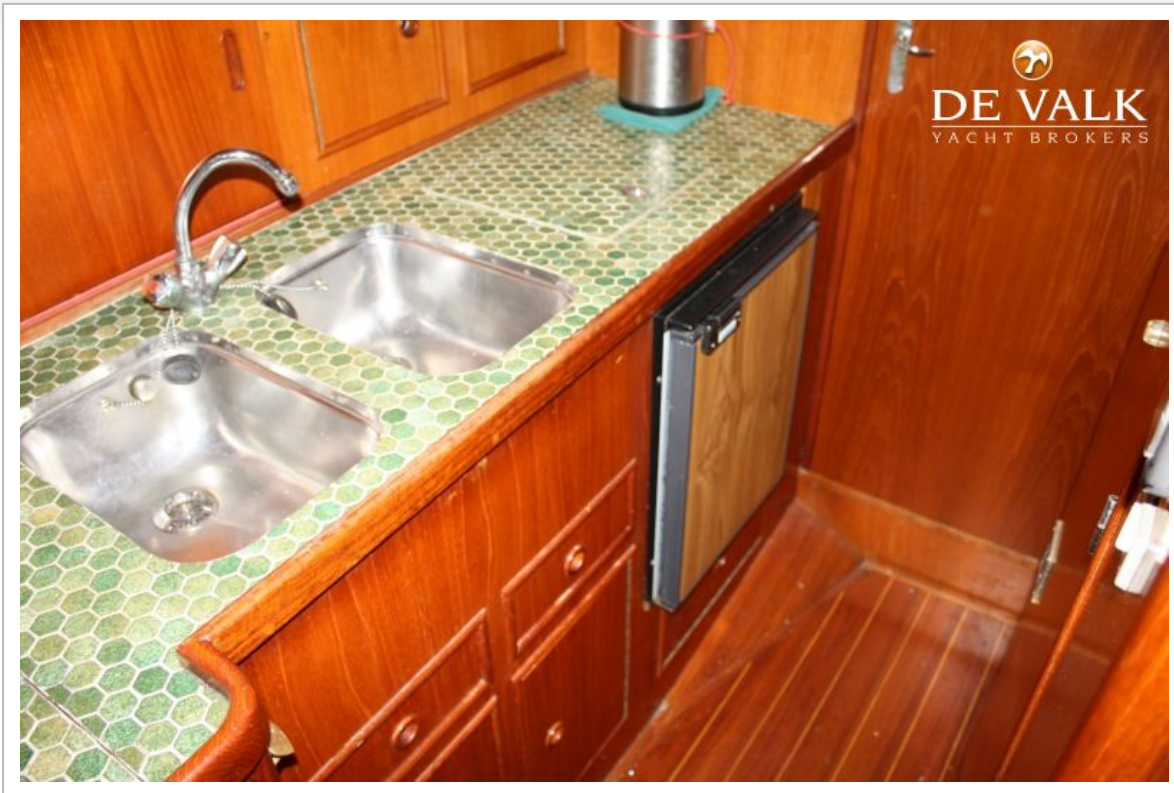
TRINTELLA 38

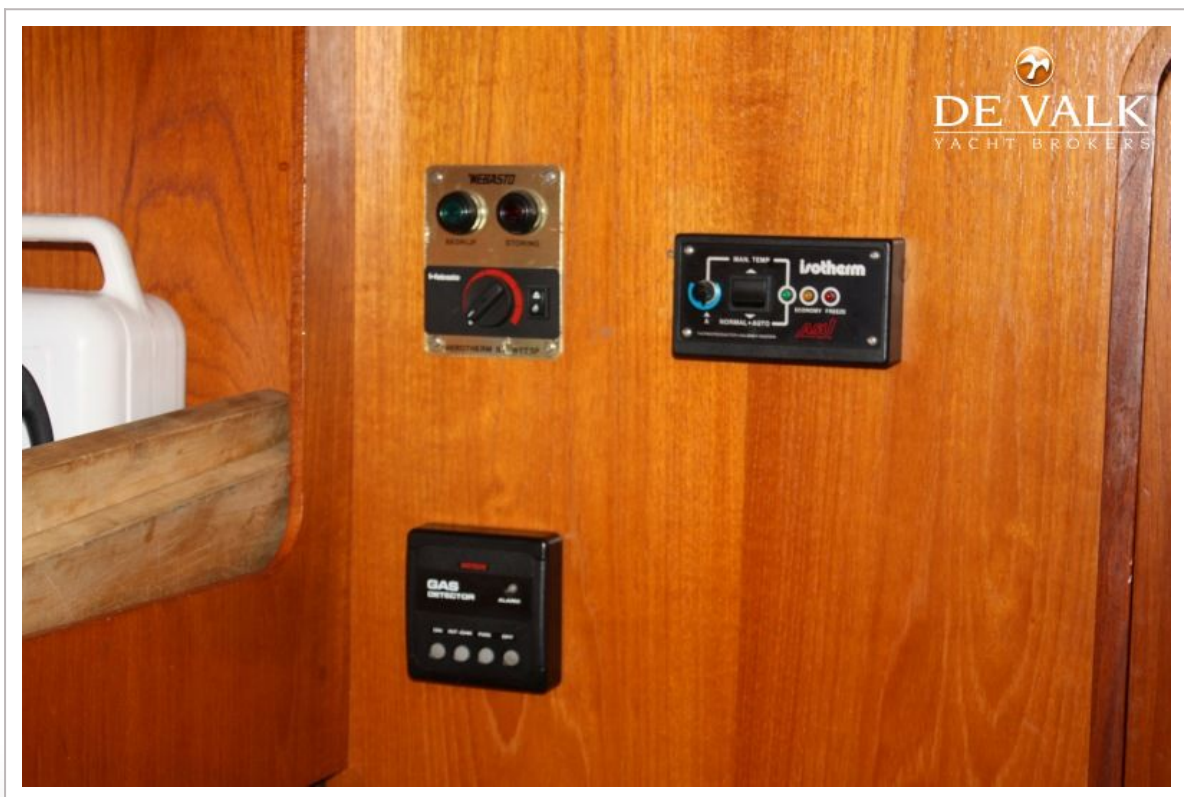
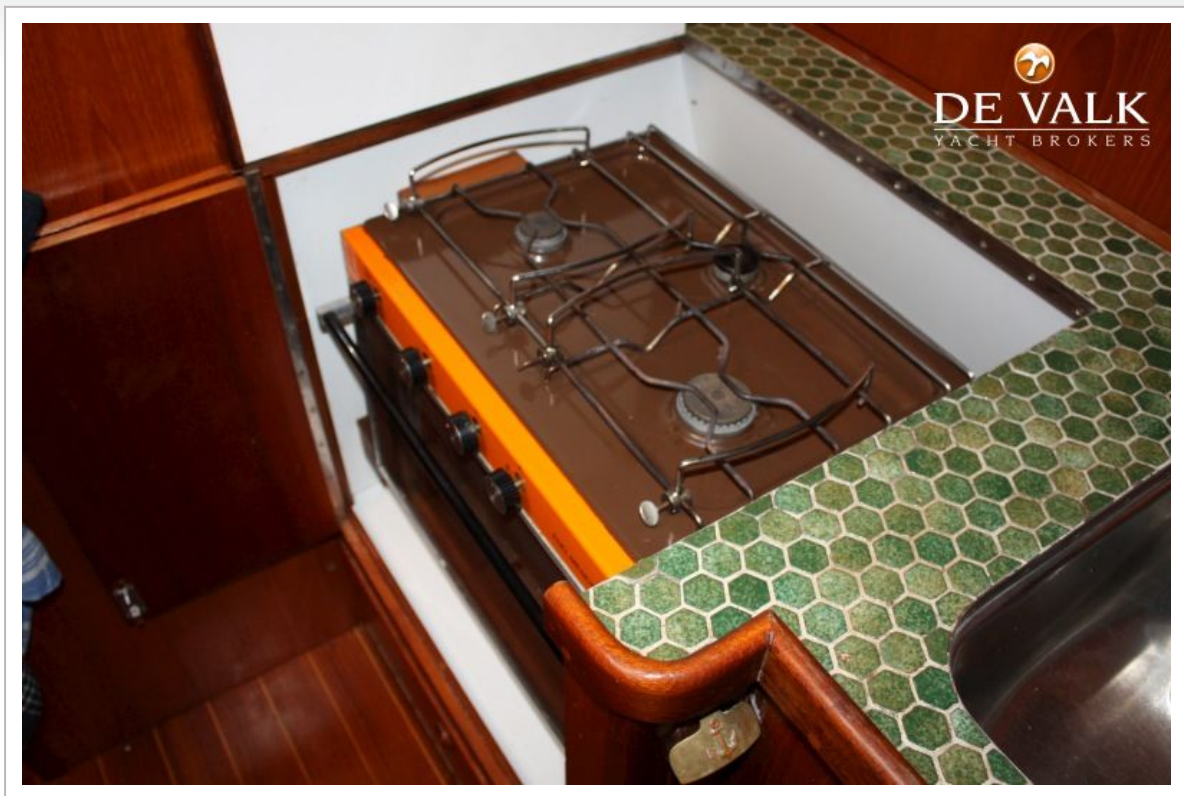


TRINTELLA 38







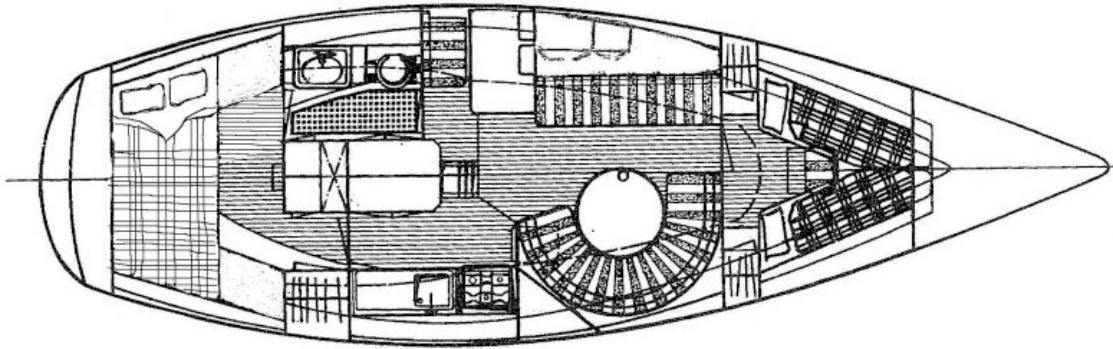




TRINTELLA 38




DE VALK
YACHT BROKERS




DE VALK
YACHT BROKERS

