



DE VALK  
YACHT BROKERS



## BAVARIA 39



DE VALK  
YACHT BROKERS

## BROKER'S COMMENTS

Spacious, comfortable, safe and easy to handle, the Bavaria 39 Cruiser was an instant success upon introduction. This Bavaria 39 comes well equipped, in excellent condition and readily available. Ample accommodations, headroom and stowagespace with three separate cabins for optimum privacy and comfort. With her stowaysails and bowthruster an very enjoyable yacht and easy to operate.

*Henk Sijbranda*

## SPECIFICATIONS

|                     |                              |                |                        |
|---------------------|------------------------------|----------------|------------------------|
| <b>Dimensions</b>   | 12.14 x 3.97 x 1.85 (m)      | <b>Builder</b> | Bavaria Yachtbau GmbH  |
| <b>Built</b>        | 2006                         | <b>Cabins</b>  | 3                      |
| <b>Material</b>     | GRP                          | <b>Berths</b>  | 6                      |
| <b>Engine(s)</b>    | 1 x Volvo penta D2-40 diesel | <b>Hp/Kw</b>   | 38.00 (hp), 27.93 (kw) |
| <b>Asking price</b> | sold (VAT )                  | <b>Lying</b>   | contact Hindeloopen    |

## CONTACT

|                     |   |                  |                       |
|---------------------|---|------------------|-----------------------|
| <b>Sales office</b> | De Valk Hindeloopen B.V.                    | <b>Telephone</b> | +31 514 52 40 00      |
| <b>Address</b>      | Oosterstrand 1<br>8713 JS Hindeloopen<br>NL | <b>E-mail</b>    | hindeloopen@devalk.nl |

## DISCLAIMER

These particulars are given in good faith as supplied but cannot be guaranteed.



## GENERAL

|                                    |                       |
|------------------------------------|-----------------------|
| <b>Model</b>                       | BAVARIA 39            |
| <b>Type</b>                        | sailing yacht         |
| <b>LOA (m)</b>                     | 12,14                 |
| <b>Beam (m)</b>                    | 3,97                  |
| <b>Draft (m)</b>                   | 1,85                  |
| <b>Air draft (m)</b>               | 17,05                 |
| <b>Headroom (m)</b>                | 2,00                  |
| <b>Year built</b>                  | 2006                  |
| <b>Builder</b>                     | Bavaria Yachtbau GmbH |
| <b>Country</b>                     | Germany               |
| <b>Displacement (t)</b>            | 8,3                   |
| <b>Ballast (tonnes)</b>            | 2,5                   |
| <b>Gross tonnage</b>               | 10                    |
| <b>Net tonnage</b>                 | 8,3                   |
| <b>CE norm</b>                     | A                     |
| <b>Hull material</b>               | GRP                   |
| <b>Hull colour</b>                 | blue                  |
| <b>Hull shape</b>                  | roundbilged           |
| <b>Keel type</b>                   | fin keel              |
| <b>Superstructure material</b>     | GRP                   |
| <b>Deck material</b>               | GRP                   |
| <b>Deck finish</b>                 | teak                  |
| <b>Superstructure deck finish</b>  | teak                  |
| <b>Cockpit deck finish</b>         | teak                  |
| <b>Dorades</b>                     | 1x                    |
| <b>Window frame</b>                | aluminum              |
| <b>Window material</b>             | tempered glass        |
| <b>Fuel tank (litre)</b>           | polyethylene 210      |
| <b>Level indicator (fuel tank)</b> | yes                   |
| <b>Freshwater tank (litre)</b>     | polyethylene 2x 180   |



|                                   |                           |
|-----------------------------------|---------------------------|
| <b>Blackwater tank (litre)</b>    | polyethylene 2x 80        |
| <b>Blackwater tank extraction</b> | deck extraction + pump 2x |
| <b>Wheel steering</b>             | mechanical                |
| <b>Emergency tiller</b>           | yes                       |

## ACCOMMODATION

|                              |                               |
|------------------------------|-------------------------------|
| <b>Cabins</b>                | 3                             |
| <b>Berths</b>                | 6                             |
| <b>Interior</b>              | mahogany                      |
| <b>Floor</b>                 | yes                           |
| <b>Open cockpit</b>          | yes                           |
| <b>Saloon</b>                | yes                           |
| <b>Headroom saloon (m)</b>   | 2                             |
| <b>Heating</b>               | diesel ducted hot air Webasto |
| <b>Chart table</b>           | yes                           |
| <b>Aft Cabin</b>             | 2x                            |
| <b>Galley</b>                | yes                           |
| <b>Countertop</b>            | wood                          |
| <b>Sink</b>                  | stainless steel 2x            |
| <b>Cooker</b>                | calor gas                     |
| <b>Oven</b>                  | yes                           |
| <b>Fridge</b>                | yes                           |
| <b>Hot water system</b>      | 220V + engine                 |
| <b>Water pressure system</b> | electrical                    |
| <b>Owners cabin</b>          | v-bed                         |
| <b>Wardrobe</b>              | hanging and drawers           |
| <b>Bathroom</b>              | en suite                      |
| <b>Toilet</b>                | en suite                      |
| <b>Wash basin</b>            | in the bathroom               |
| <b>Shower</b>                | en suite                      |
| <b>Guest cabin 1</b>         | double bed                    |



|                      |                     |
|----------------------|---------------------|
| <b>Wardrobe</b>      | hanging and drawers |
| <b>Bathroom</b>      | shared              |
| <b>Toilet</b>        | shared              |
| <b>Wash basin</b>    | in the bathroom     |
| <b>Shower</b>        | shared              |
| <b>Guest cabin 2</b> | double bed          |
| <b>Wardrobe</b>      | hanging and drawers |
| <b>Toilet</b>        | shared              |
| <b>Wash basin</b>    | at the toilet       |
| <b>Shower</b>        | shared              |

## MACHINERY

|                                 |                        |
|---------------------------------|------------------------|
| <b>No of engines</b>            | 1                      |
| <b>Make</b>                     | Volvo penta            |
| <b>Type</b>                     | D2-40                  |
| <b>HP</b>                       | 38,00                  |
| <b>kW</b>                       | 27,93                  |
| <b>Fuel</b>                     | diesel                 |
| <b>Engine hours</b>             | NB                     |
| <b>Drive</b>                    | sail-drive             |
| <b>Bowthruster</b>              | electric Side Power    |
| <b>Exhaust</b>                  | watercooled            |
| <b>Propeller shaft material</b> | stainless steel        |
| <b>Manual bilge pump</b>        | yes                    |
| <b>Electric bilge pump</b>      | yes                    |
| <b>Electrical installation</b>  | 12 / 220 volt          |
| <b>Start battery</b>            | yes                    |
| <b>Service battery</b>          | 2x 140 Amp             |
| <b>Battery charger</b>          | Victron Phoenix 50amp  |
| <b>Inverter</b>                 | Carpoin power inverter |
| <b>Shorepower</b>               | with cable             |



## NAVIGATION

|                   |                             |
|-------------------|-----------------------------|
| Compass           | Plastimo                    |
| Depth sounder     | Raymarine ST60+ tridata     |
| Log               | Raymarine ST60+ tridata     |
| Windset           | Raymarine ST60+             |
| VHF               | Raymarine Ray240E           |
| Autopilot         | Raymarine ST6002 SmartPilot |
| Radar/GPS/plotter | Raymarine C70               |

## EQUIPMENT

|                            |                              |
|----------------------------|------------------------------|
| Sprayhood                  | yes                          |
| Cockpit table              | yes                          |
| Bathing platform           | yes                          |
| Boarding ladder            | stainless steel              |
| Deck shower                | yes                          |
| Anchor                     | CQR Plough                   |
| Anchor chain               | yes                          |
| Windlass                   | electrical Lewmar Pro-Series |
| Sea railing                | stainless steel              |
| Railing side opening gates | yes                          |
| Pushpit                    | yes                          |
| Pulpit                     | yes                          |
| Fenders                    | yes                          |
| Mooring lines              | yes                          |
| TV                         | LG                           |
| TV receiver                | yes                          |
| Radio-cd player            | yes                          |
| Cockpit speakers           | yes                          |
| Speakers in salon          | yes                          |
| Clock - barometer          | yes                          |



## RIGGING

|                     |                  |
|---------------------|------------------|
| Brand mast          | Seldén           |
| Material mast       | aluminum         |
| Spreaders           | 2                |
| Mainsail            | yes              |
| Stoway mast         | yes              |
| Genoa               | yes              |
| Genoa furler        | Furlex 300S      |
| Backstay adjuster   | tackle           |
| Boomvang            | gasspring Selden |
| Primary sheet winch | 2x Lewmar 40     |
| Genoa sheetwinches  | 2x Lewmar 50     |
| Spinnaker winch     | 2x Lewmar 44     |









# BAVARIA 39



# BAVARIA 39





# BAVARIA 39



# BAVARIA 39



# BAVARIA 39

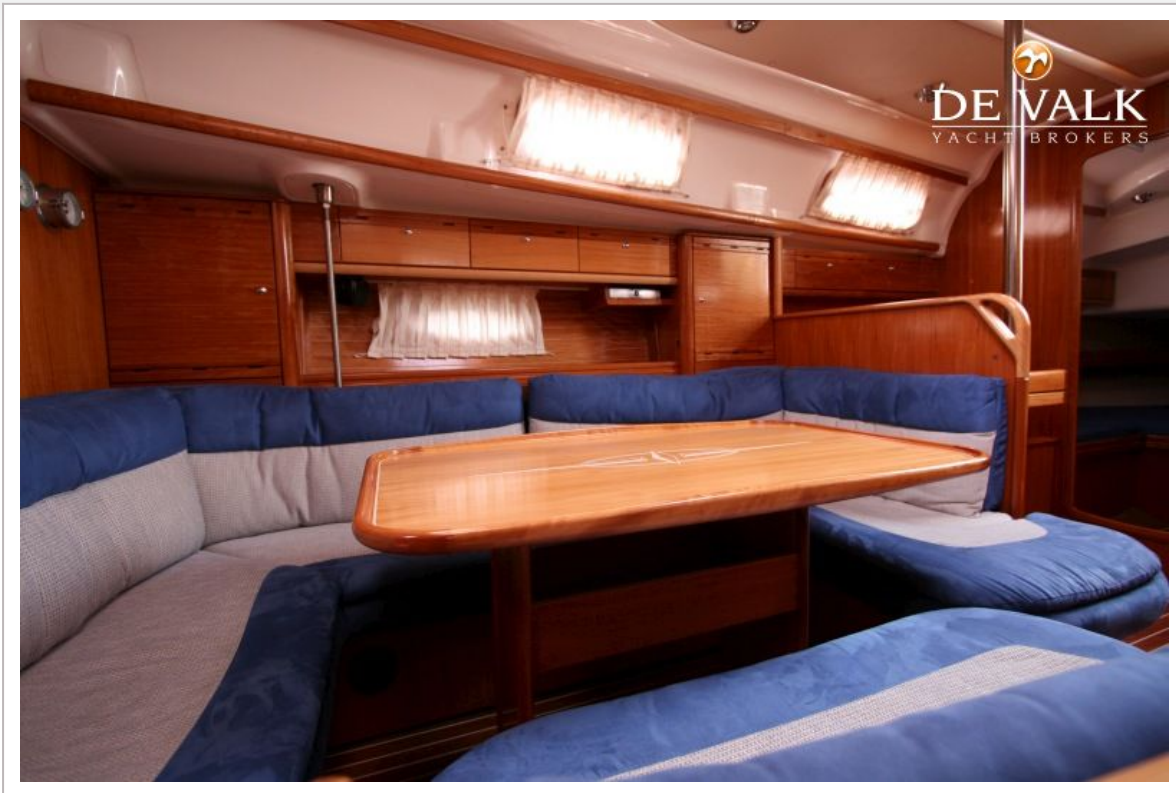


# BAVARIA 39

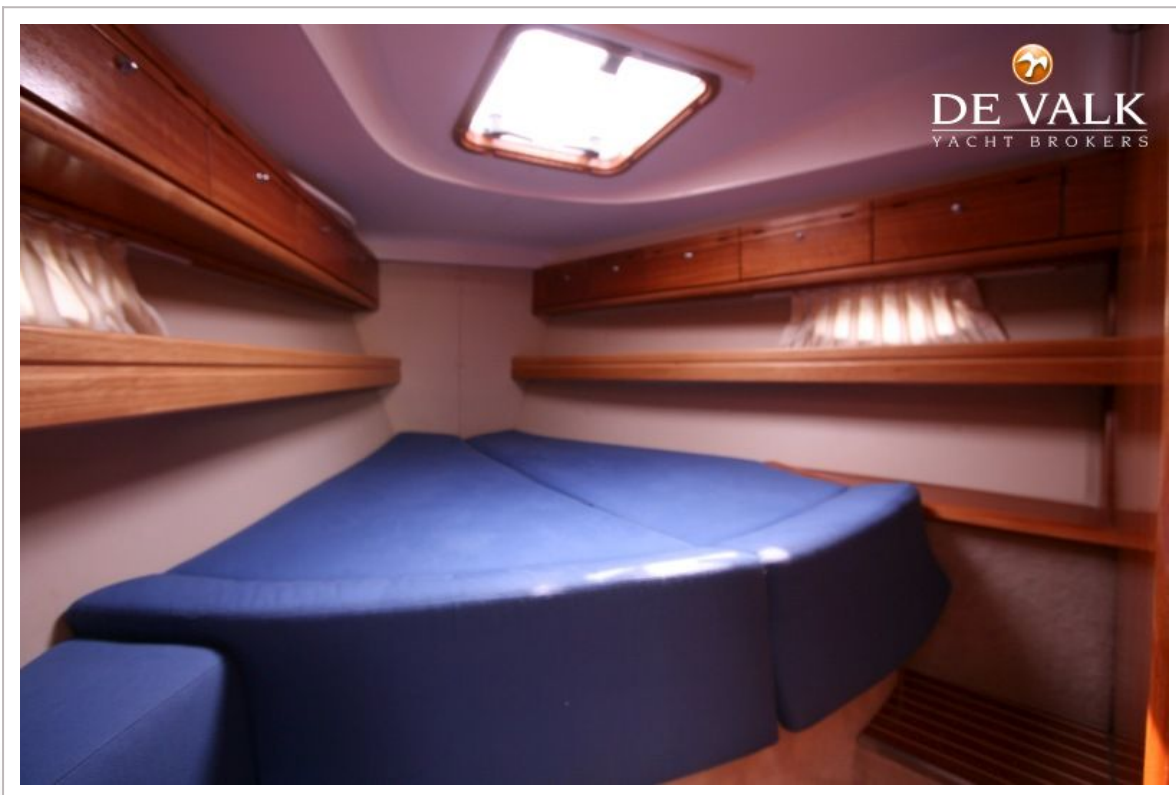




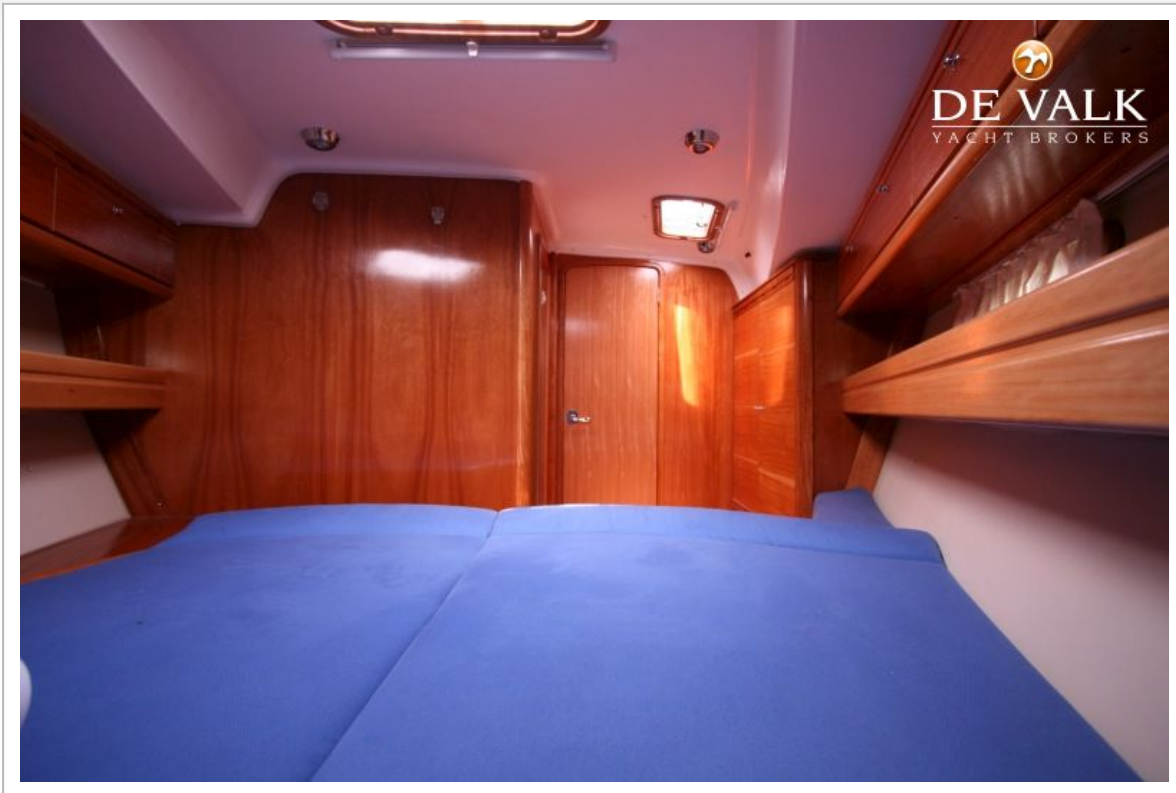
# BAVARIA 39



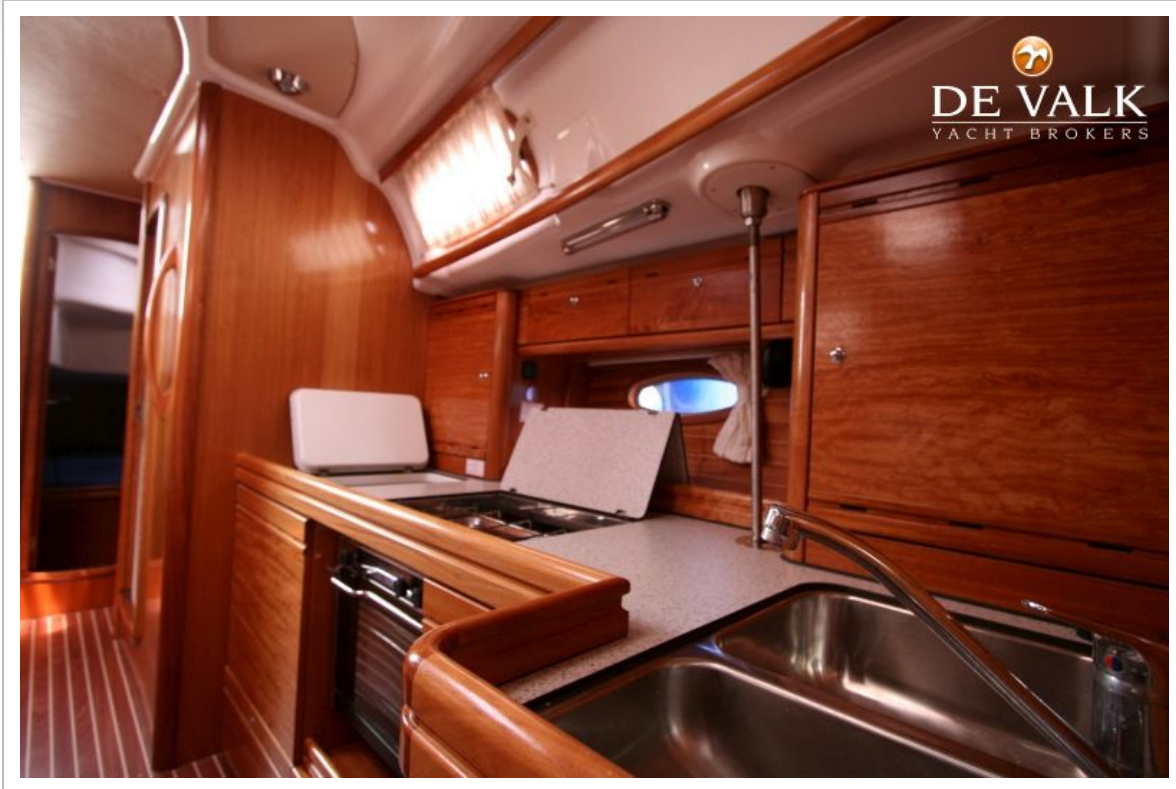
# BAVARIA 39



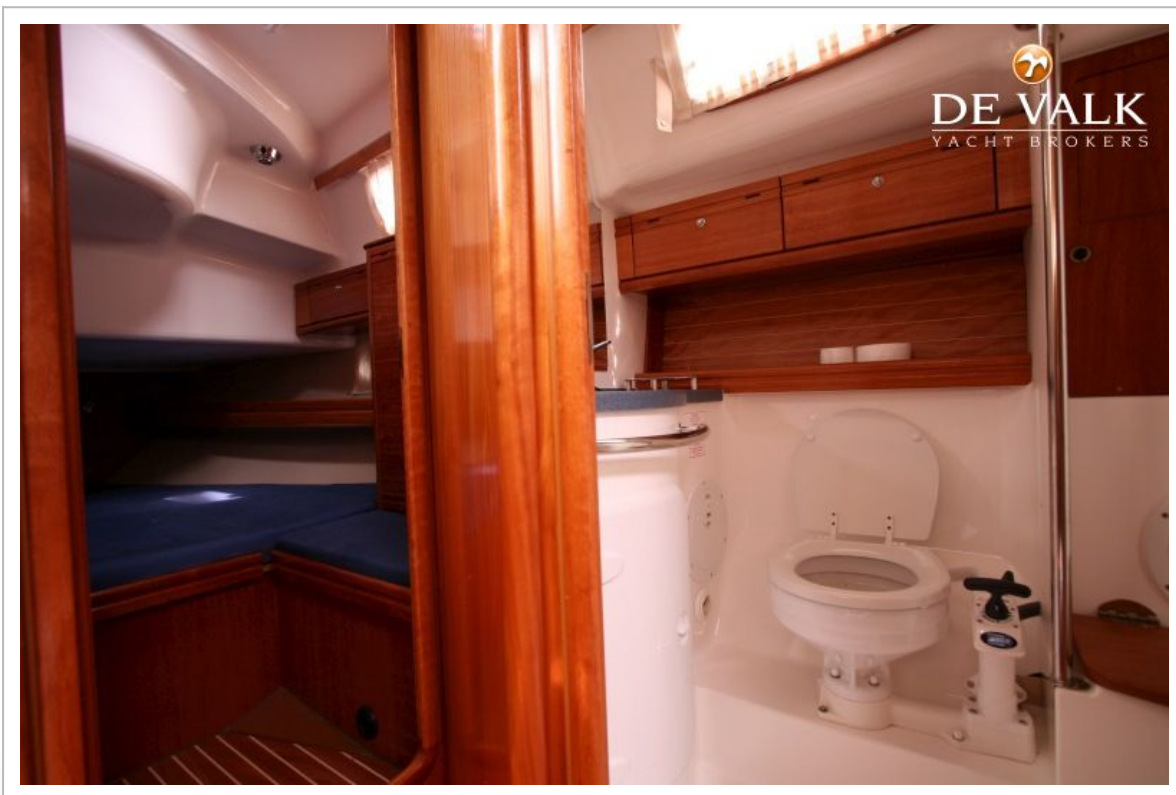
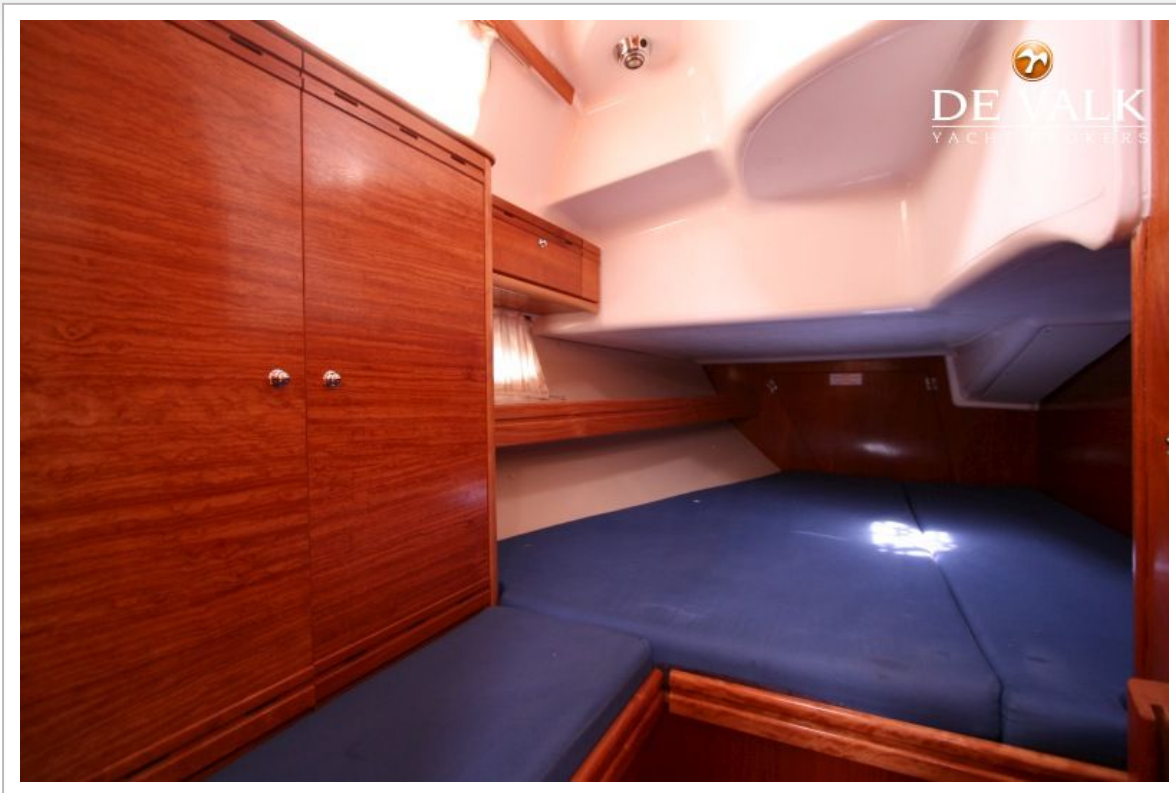
# BAVARIA 39



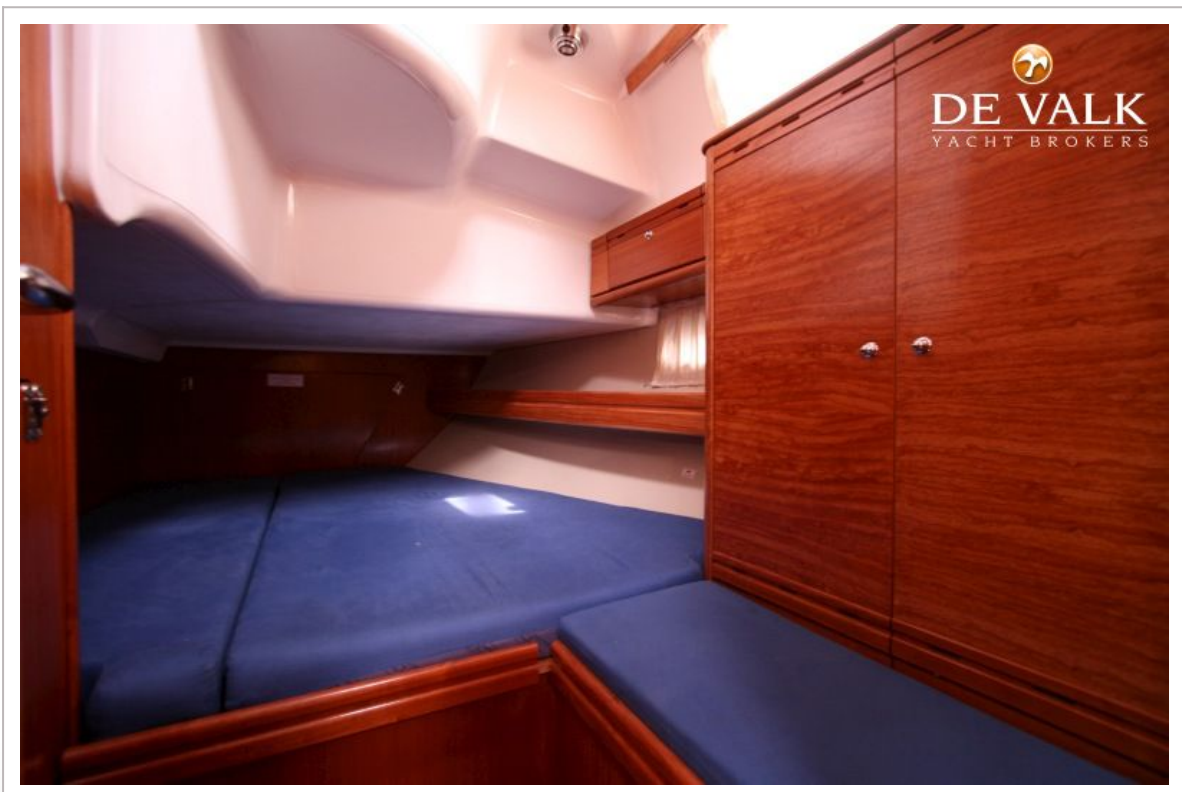
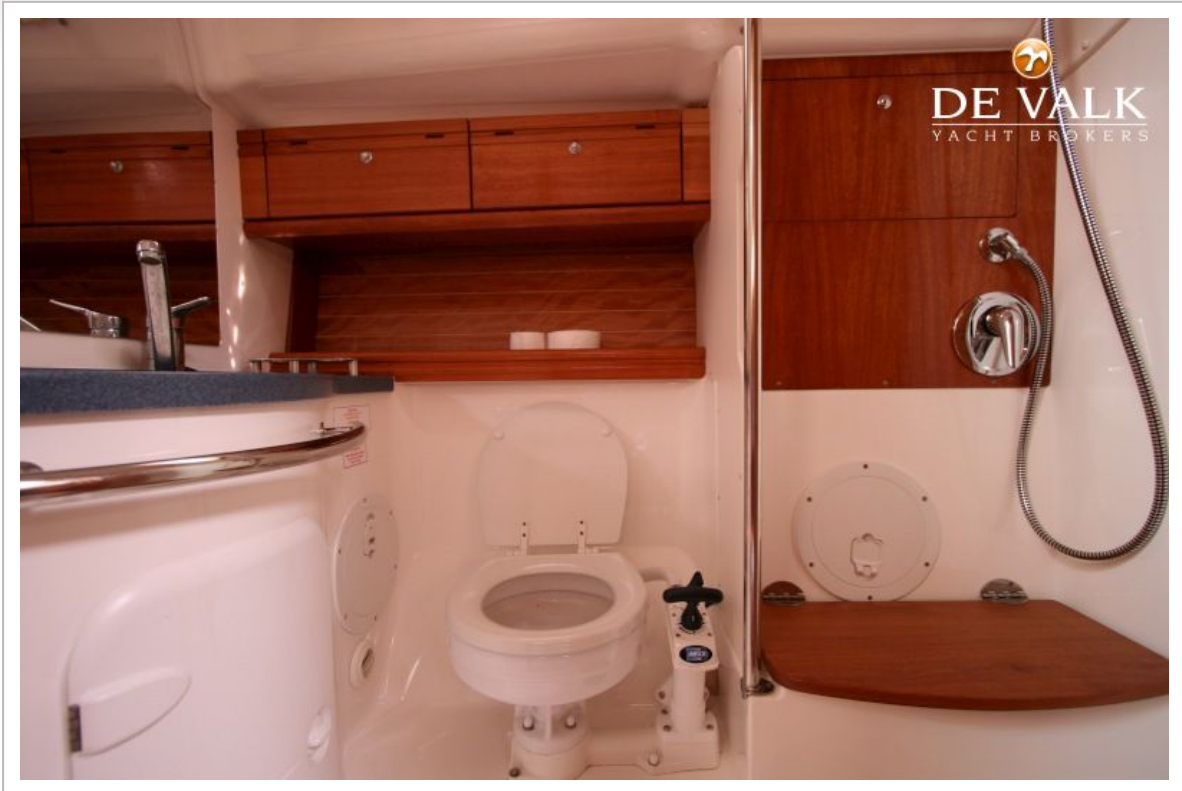
# BAVARIA 39



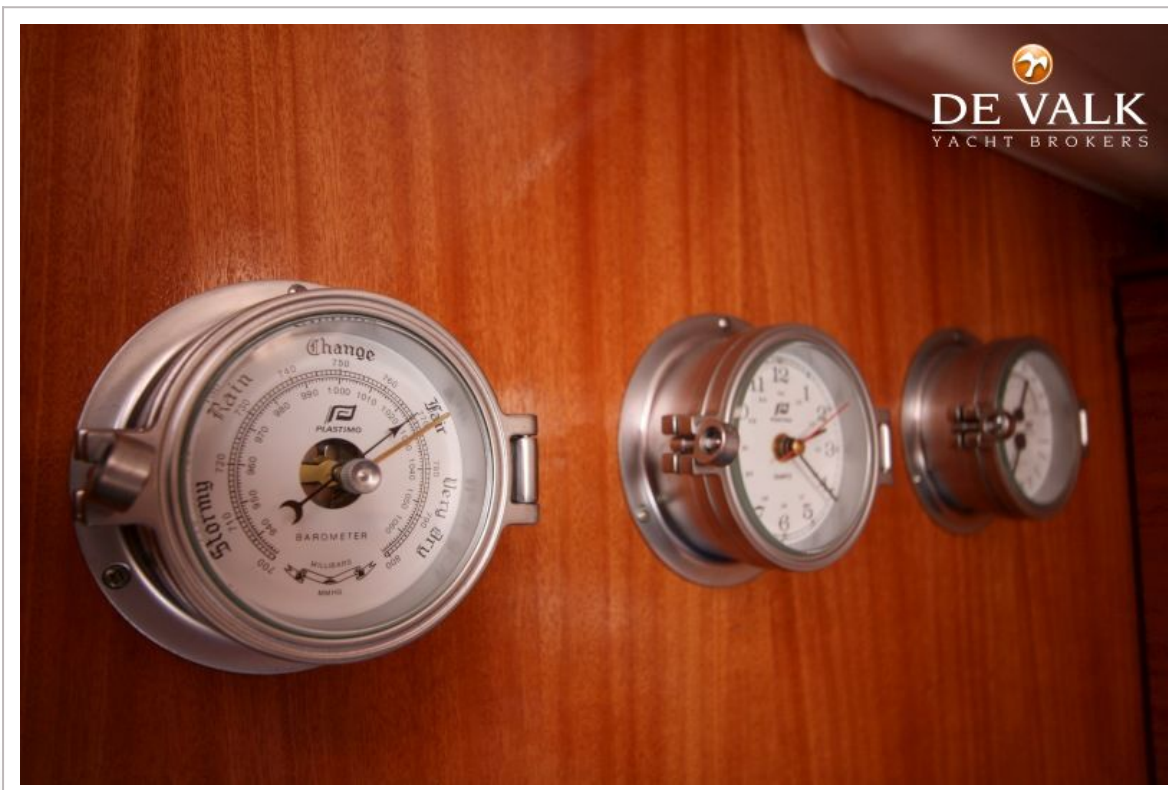
# BAVARIA 39



# BAVARIA 39



# BAVARIA 39



# BAVARIA 39

