



DE VALK
YACHT BROKERS



ISLAND PACKET 440



DE VALK
YACHT BROKERS

ISLAND PACKET 440

BROKER'S COMMENTS

This Island Packet 440 is in a very good condition, provides enormous living space, plenty storage to hold gear for a circumnavigation, enough sail to speed you comfortably to your destination and the convenience of managing it all from the cockpit. Below deck on the Island Packet 440, you'll be immediately impressed by the panoramic view of the open main saloon, the spacious forward and aft cabins with private heads, impressive woodwork throughout, a large galley, a navigation center that rivals those on much larger yachts. She is in excellent condition (stored dry every winter)

Henk Sijbranda

SPECIFICATIONS

Dimensions	13.95 x 4.37 x 1.52 (m)	Builder	Island Packet Yachts
Built	2006	Cabins	2
Material	GRP	Berths	7
Engine(s)	1 x Yanmar 4JH3 - TE diesel	Hp/Kw	75.00 (hp), 55.00 (kw)
Asking price	sold (VAT)	Lying	contact Hindeloopen

CONTACT

Sales office	De Valk Hindeloopen B.V.	Telephone	+31 514 52 40 00
Address	Oosterstrand 1 8713 JS Hindeloopen NL	E-mail	hindeloopen@devalk.nl

DISCLAIMER

These particulars are given in good faith as supplied but cannot be guaranteed.



ISLAND PACKET 440

GENERAL

Model	ISLAND PACKET 440
Type	sailing yacht
LOA (m)	13,95
LWL (m)	11,60
Beam (m)	4,37
Draft (m)	1,52
Air draft (m)	18,90
Headroom (m)	1,98
Year built	2006
Builder	Island Packet Yachts
Country	U.S.A.
Designer	Bob Johnson
Displacement (t)	14,5
Ballast (tonnes)	lead in GRP 5.4
CE norm	A
Hull material	GRP
Hull colour	Ivory
Hull shape	round-bilged
Keel type	long keel
Superstructure material	GRP
Rubbing strake	stainless steel
Deck material	GRP
Deck finish	non-skid moulded in
Superstructure deck finish	non-skid moulded in
Cockpit deck finish	non-skid moulded in
Antifouling (year)	05-2019
Dorades	3x Stainless steel
Window frame	13x polished stainless steel with screens
Window material	13x safety glass
Deckhatch	8x Lewmar with ocean air screens + shades



Fuel tank (litre)	606 ltr. welded, baffled and heavy gauge marine grade aluminium
Level indicator (fuel tank)	Tank mounted
Freshwater tank (litre)	985 ltr. Thermocure™ moulded + baffled resin infused fiberglass
Level indicator (freshwater)	AGU-Gage ultra 8 tank system monitor
Blackwater tank (litre)	Thermocure™ tank with stainless steel deck pump out fitting
Level indicator (blackwater)	AGU-Gage ultra 8 tank system monitor
Blackwater tank extraction	deck extraction + Macerator pump
Wheel steering	rack & pinion - Lewmar "Cobra"
Emergency tiller	yes
Extra info	Yacht is stored inside during wintertime

ACCOMMODATION

Cabins	2
Berths	7
Interior	teak
Floor	Teak & Holly + grp in kitchen, heads and navigation area
Open cockpit	yes
Saloon	yes
Headroom saloon (m)	1,98
Heating	diesel ducted hot air - Webasto Airtop 5000
Navigation center	yes
Chart table	yes
Aft Cabin	Guest cabin
Dinette	yes
Galley	yes
Countertop	corian - beige
Sink	stainless steel - double sink
Cooker	calor gas - Gimballed 3 burner Force10 stove
Oven	In cooker
Gas alarm	Trident Marine Systems



ISLAND PACKET 440

Microwave	Tappan
Fridge	2x Frigoboat with individual controls + gas support
Freezer	Struts for both compartments, electric drain pump + light
Hot water system	220V + engine - 40 ltr. boiler
Water pressure system	Jabsco waterpump
Coffee maker	yes
Owners cabin	French bed
Bed length (m)	2 mtr. - innerspring mattress (federkern)
Wardrobe	hanging/drawers/shelves
Bathroom	en suite
Toilet	VacuFlush
Toilet system	vacuum
Wash basin	Corian countertop, SS sink and mirrored storage cabinets
Shower	Large separate shower stall with folding acrylic door.
Guest cabin 1	French bed
Bed length (m)	2 mtr. - innerspring mattress (federkern)
Wardrobe	drawers
Bathroom	en suite
Toilet	VacuFlush
Toilet system	vacuum
Wash basin	Corian countertop with enlarged SS sink, storage cabinets
Shower	Separate shower stall with folding acrylic door.

MACHINERY

No of engines	1
Make	Yanmar
Type	4JH3 - TE
HP	75
kW	55,00
Fuel	diesel
Year installed	2006



ISLAND PACKET 440

Maximum speed (kn)	8
Cruising speed (kn)	6
Engine hours	692
Engine cooling system	freshwater heat exchanger
Drive	shaft
Engine controls	bowden cable
Gearbox	mechanical With wet cone clutch
Bowthruster	Sleipner side power 6HP with joystick control on pedestal
Exhaust	watercooled
Propeller type	folding Max Prop
Propeller blades	3
Propeller shaft material	stainless steel
Shaft lubrication	water
Manual bilge pump	yes
Electric bilge pump	yes
Generator	MasPower 8 kw with sound shield
Running hours generator	76
Start battery	1x Maintenance-free AGM 12 V (lifeline) 100 Ah
Service battery	4x Maintenance-free AGM 12 V (lifeline) 100 Ah
Generator battery	yes
Battery monitor	Philippi
Battery charger	Mastervolt
Inverter	For TV and computer only
Shorepower	with cable

NAVIGATION

Compass	Ritchie
Depth sounder	Raymarine ST60 +
Log	Raymarine ST60 +
Windset	Raymarine ST60 +
VHF	2x Raymarine Ray 240



Autopilot	Raymarine ST6002 smart pilot
Rudder angle indicator	In autopilot
Radar	Raymarine 2 kw
Radar/GPS/plotter	Raymarine C80
Electronic chart(s)	Navionics
AIS receiver	Raymarine 650
Navigation lights	yes

EQUIPMENT

Sprayhood with grab rail	Both inside the cockpit and outside on the sprayhood
Cockpit cover	yes
Bimini	yes
Winter cover	To be placed on boom and hoyt boom
Cockpit cushions	yes
Cockpit table	Teak table, foldable, painted
Bathing platform	With slip resistant sole
Boarding ladder	stainless steel Mounted to stern, foldable
Deck shower	Warm and cold
Anchor	25 kg stainless steel with boatname engraved
Anchor chain	50 mtr, stainless steel
Windlass	electrical Lewmar V
Capstan	yes
Sea railing	stainless steel
Grab rail (superstructure)	stainless steel
Railing side opening gates	yes
Pushpit	yes
Pulpit	yes
Life raft	valise (or bag) Plastimo
Life raft (pers)	4
Last life raft survey	2018
Danbuoy	Plastimo



Rope cutter	yes
Radar reflector	yes
Fenders	6 fenders + 3 ball fenders
Mooring lines	2x 30 mtr. 4x 15 mtr.
TV	Samsung LCD
TV receiver	DVBT Antenne
Radio-cd player	JVC
Cockpit speakers	2x painted in IP colour
Speakers in salon	2x
Clock - barometer	Wempe
Fire extinguisher	3x
Latest extinguisher survey	06-2019
Extra info	Stainless steel handrails in all cabins 2 foldable stern seats
Extra info	Ultra leather upholstery in saloon + nav area

RIGGING

Rigging	cutter
Standing rigging	wire
Brand mast	Sparcraft
Material mast	aluminium - powder coated
Spreaders	2 pair
Keel stepped mast	yes
Mainsail	Doyle
Stoway mast	yes
Genoa	Doyle
Genoa furler	Harken
Staysail	Doyle
Staysail furler	Harken
Self tacking jib installation	Staysail - Hoyt self-vanging boom
Reefing System	main in-mast furling
Boomvang	gasspring



ISLAND PACKET 440

Primary sheet winch

2x Lewmar Ocean 16 CST in cockpit

Genoa sheetwinches

2x Lewmar Ocean 54 CST, electrical in cockpit

Halyard winches

2x Lewmar Ocean 30 CST on mast 1x Lewmar Ocean 8C on mast

Multifunctional winches

2x Lewmar Ocean 44 CST, electrical



ISLAND PACKET 440



ISLAND PACKET 440



ISLAND PACKET 440



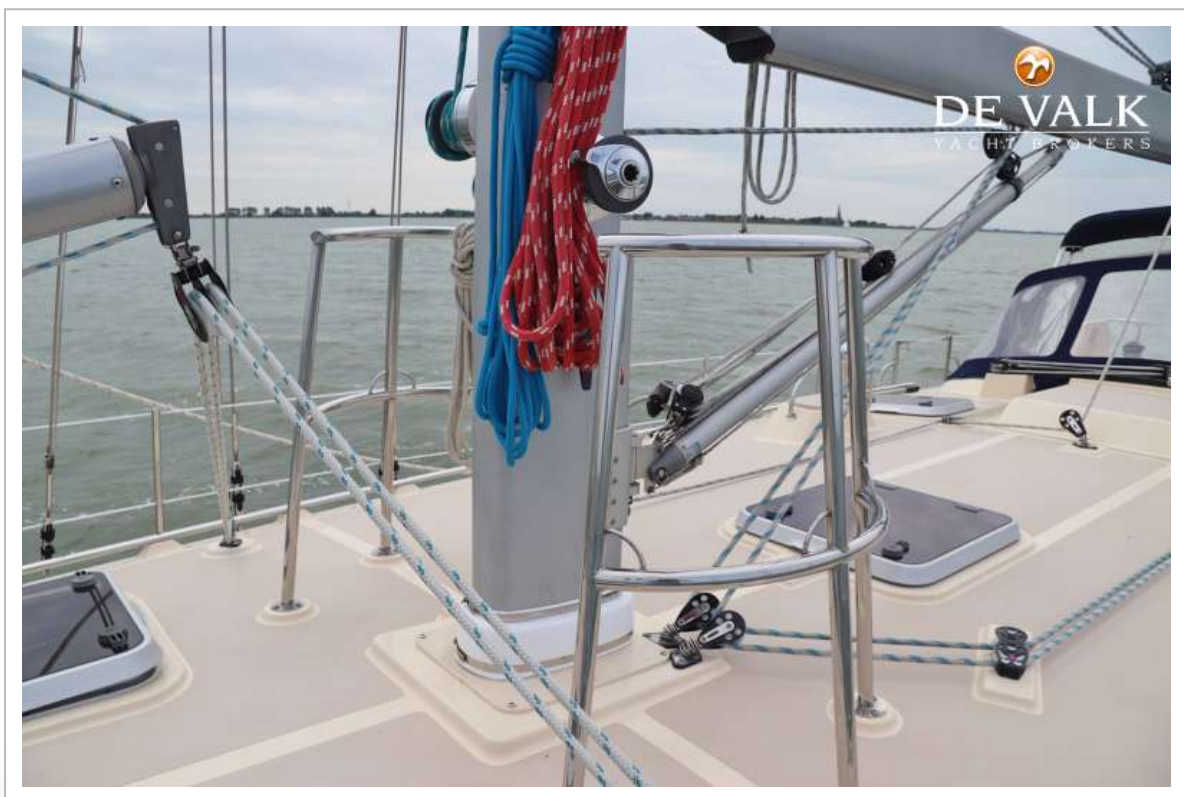
ISLAND PACKET 440



ISLAND PACKET 440



ISLAND PACKET 440



ISLAND PACKET 440



ISLAND PACKET 440



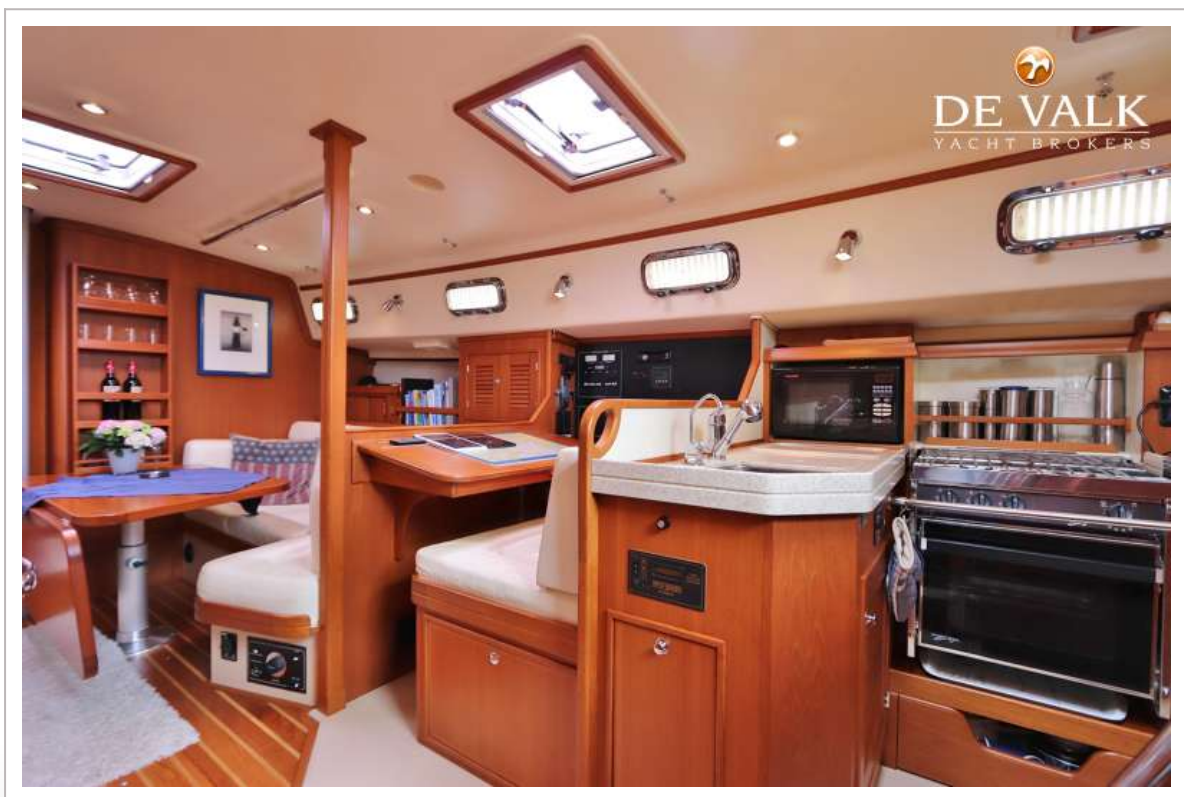
ISLAND PACKET 440



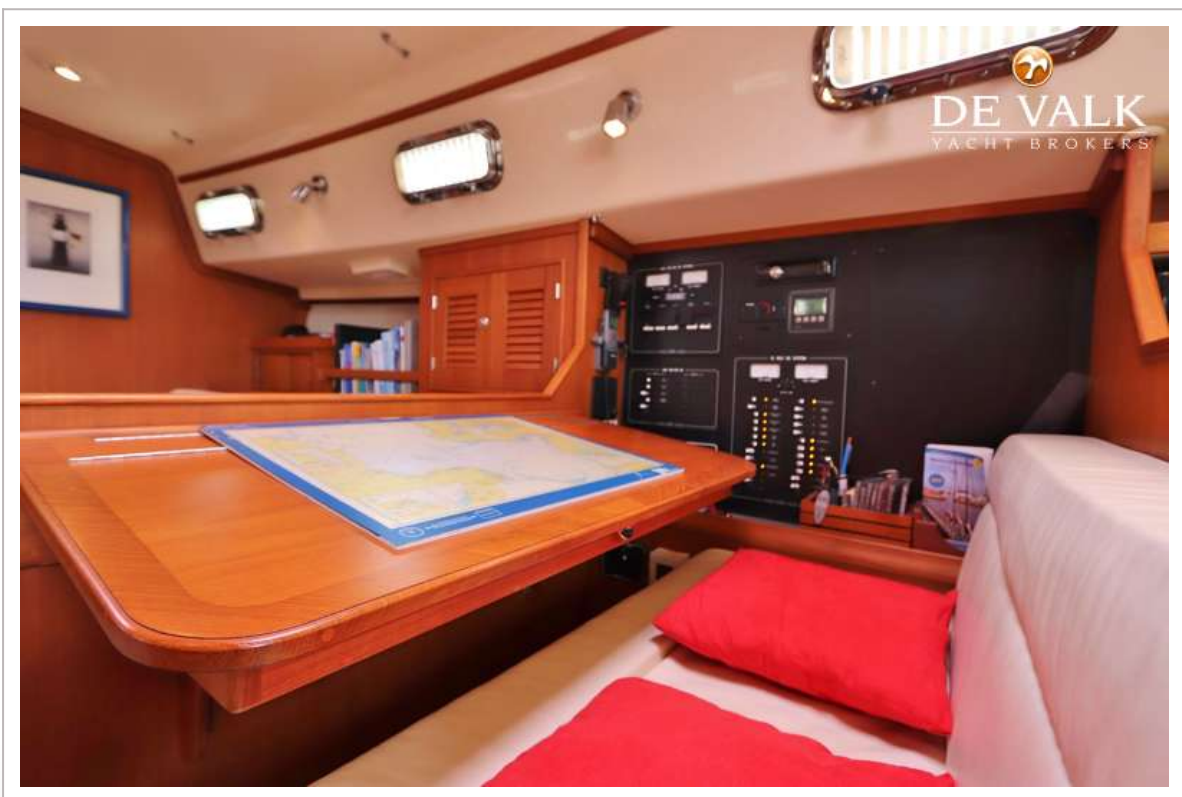
ISLAND PACKET 440



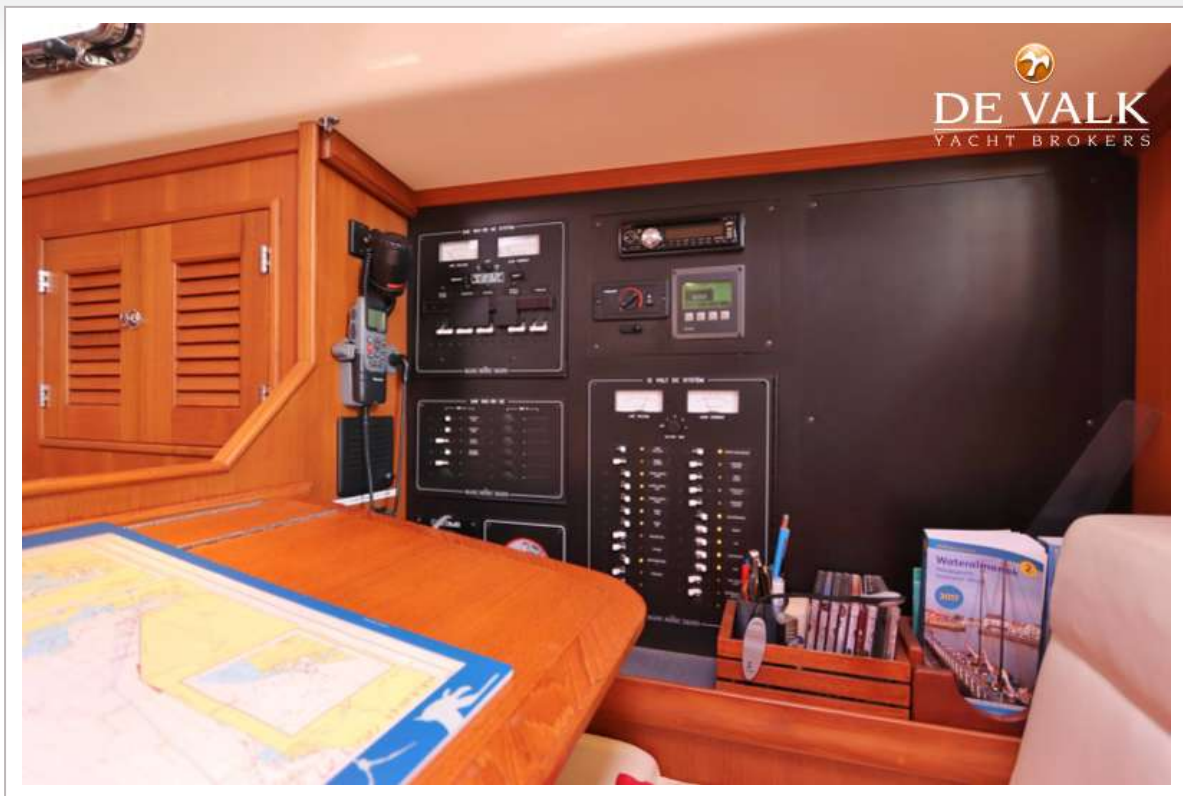
ISLAND PACKET 440



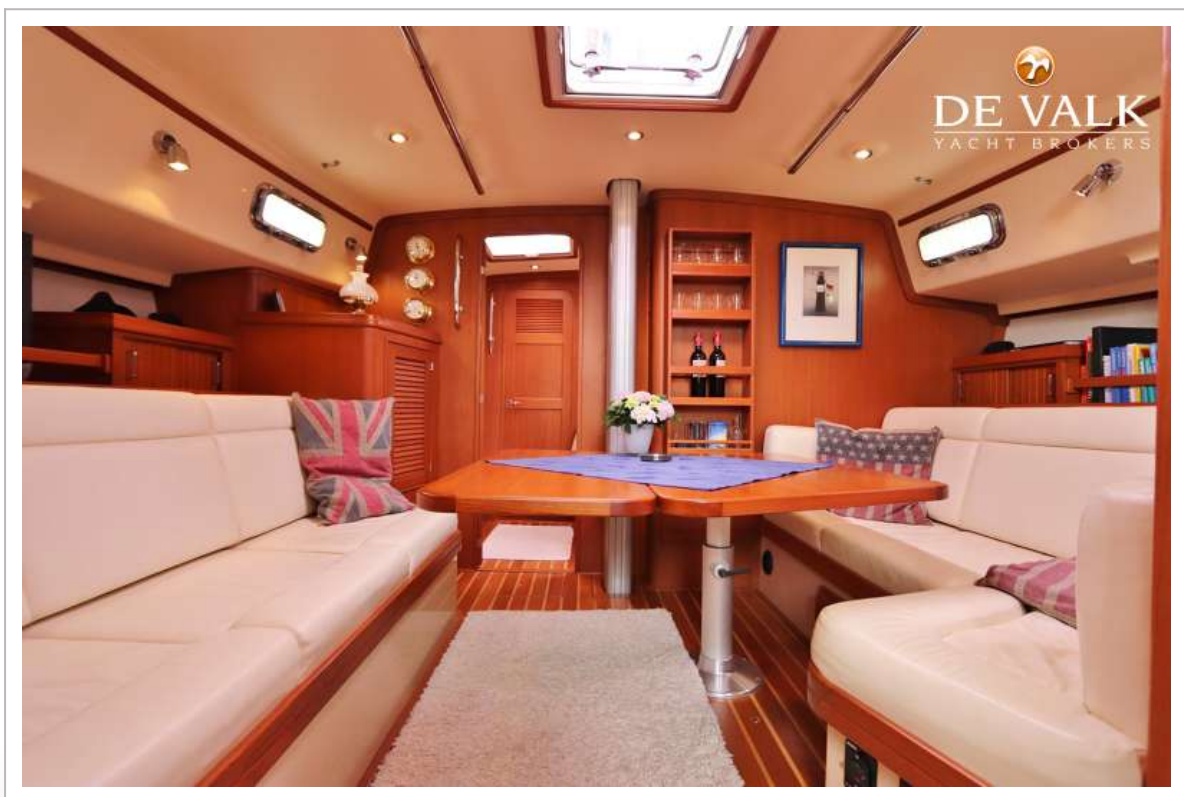
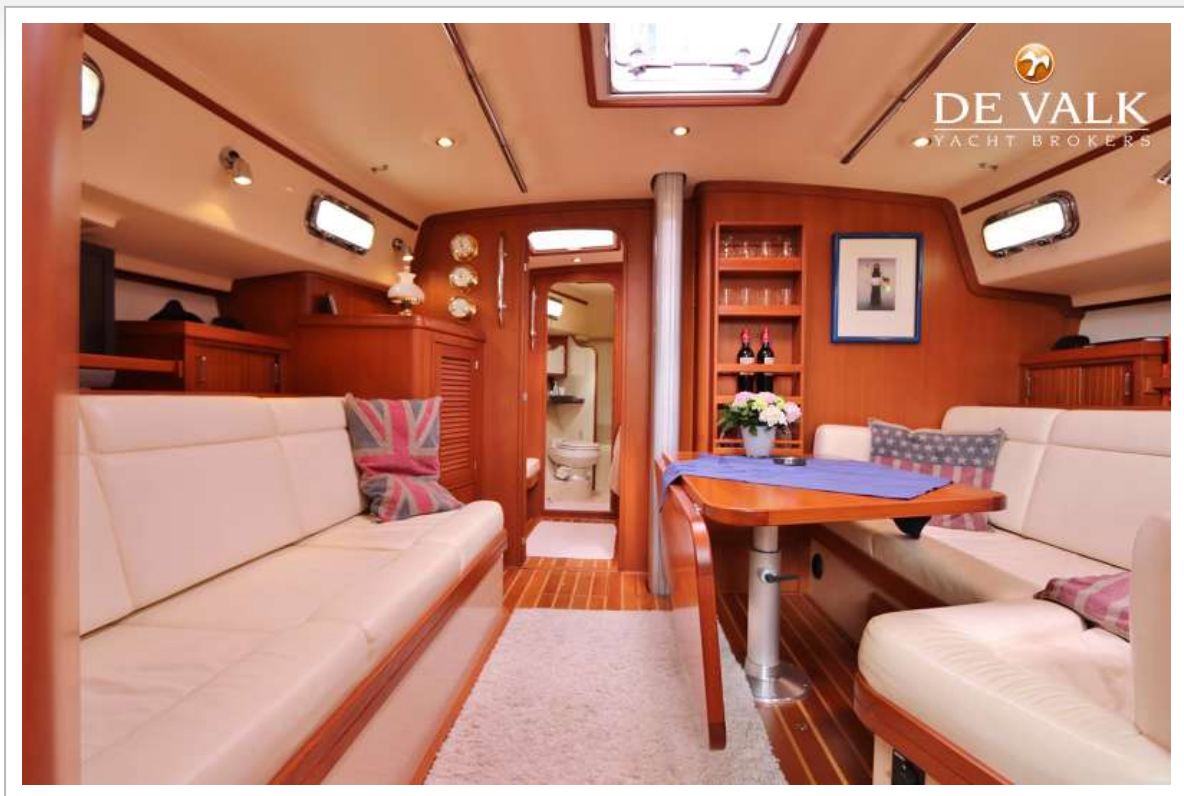
ISLAND PACKET 440



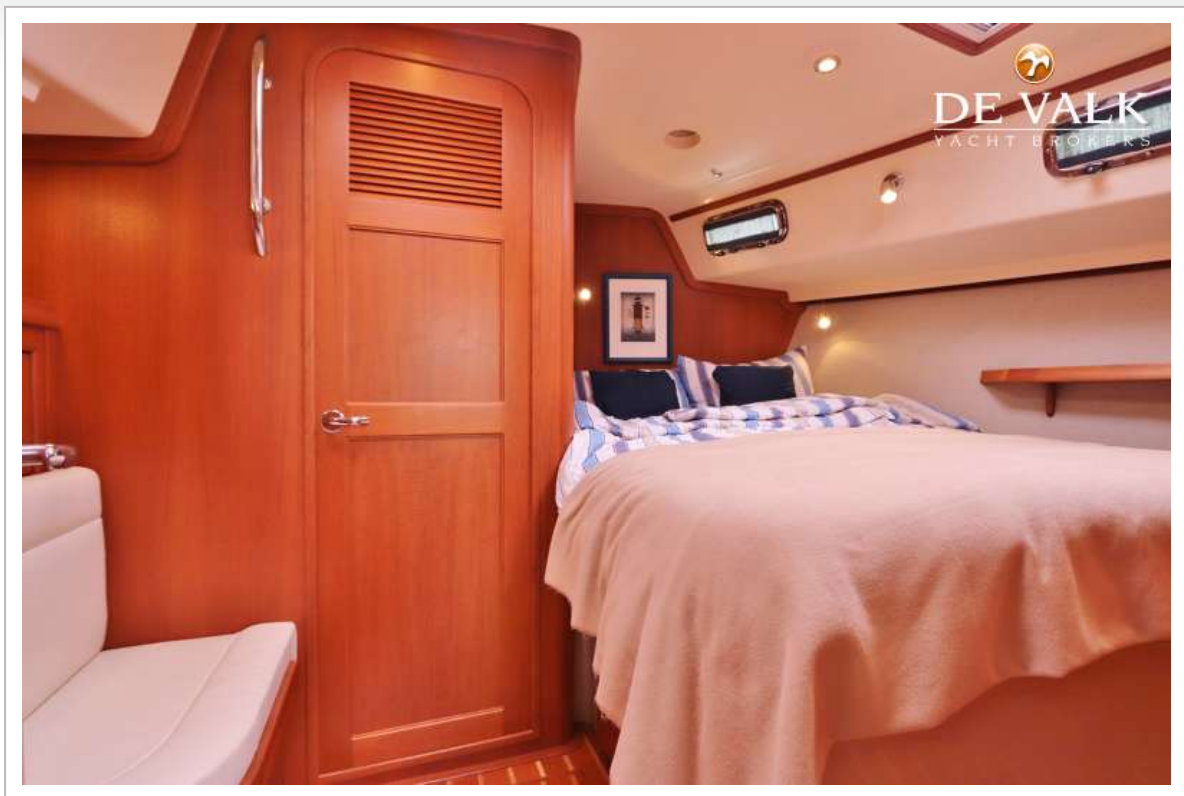
ISLAND PACKET 440



ISLAND PACKET 440



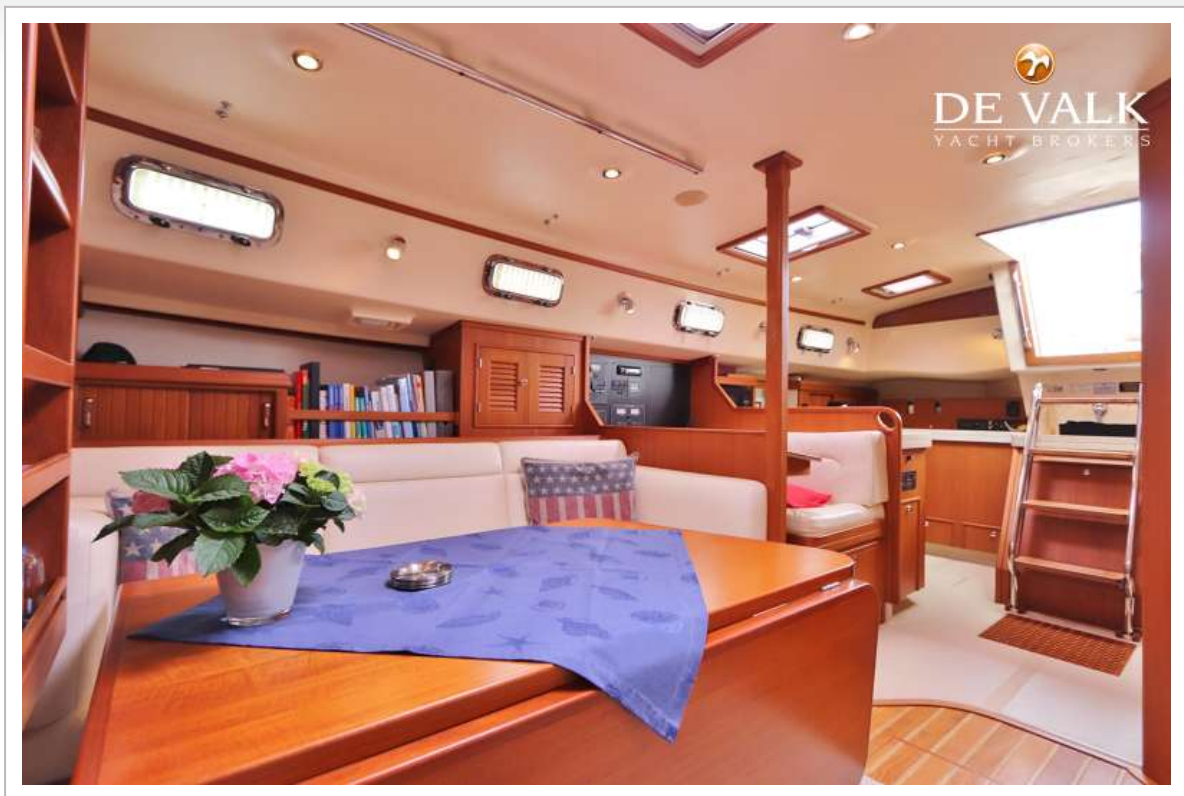
ISLAND PACKET 440



ISLAND PACKET 440



ISLAND PACKET 440



ISLAND PACKET 440



