



DE VALK  
YACHT BROKERS



MOODY 425



DE VALK  
YACHT BROKERS

BROKERAGE | CHARTER | BERTHS | FINANCE | INSURANCE | YACHT MANAGEMENT

## BROKER'S COMMENTS

The Moody 425 is a comfortable cruising yacht that is strong, spacious and fast, with the long tradition of Moody's excellence clearly evident throughout. An eminently seaworthy craft of exceptional performance and precise handling that will provide fast sea passages in the greatest comfort. Lying in Hindeloopen

*Henk Sijbranda*

## SPECIFICATIONS

<b>Dimensions</b>	12.70 x 4.07 x 1.83 (m)	<b>Builder</b>	Marine Projects UK
<b>Built</b>	1991	<b>Cabins</b>	3
<b>Material</b>	GRP	<b>Berths</b>	8
<b>Engine(s)</b>	1 x Perkins Prima M50 diesel	<b>Hp/Kw</b>	55.00 (hp), 40.42 (kw)
<b>Asking price</b>	sold (VAT )	<b>Lying</b>	at sales office

## CONTACT

<b>Sales office</b>	De Valk Hindeloopen B.V.	<b>Telephone</b>	+31 514 52 40 00
<b>Address</b>	Oosterstrand 1 8713 JS Hindeloopen NL	<b>E-mail</b>	hindeloopen@devalk.nl

## DISCLAIMER

These particulars are given in good faith as supplied but cannot be guaranteed.



## GENERAL

Model	MOODY 425
Type	sailing yacht
LOA (m)	12,70
LWL (m)	10,44
Beam (m)	4,07
Draft (m)	1,83
Air draft (m)	17,50
Headroom (m)	1,92
Year built	1991
Builder	Marine Projects UK
Country	Great Britain
Designer	Bill Dixon
Displacement (t)	9625
Ballast (tonnes)	cast iron and lead
CE norm	NA
Hull material	GRP
Hull colour	white
Hull thickness (mm)	yes
Hull shape	round-bilged
Keel type	fin keel
Superstructure material	GRP
Rubbing strake	wood
Deck material	GRP
Deck finish	teak
Superstructure deck finish	teak
Cockpit deck finish	teak
Antifouling (year)	yes
Dorades	3
Window frame	aluminium
Window material	polycarbonate



Portholes	aluminium
Fuel tank (litre)	polyethylene 200
Freshwater tank (litre)	stainless steel 410
Blackwater tank (litre)	yes
Wheel steering	cable steering
Emergency tiller	yes

## ACCOMMODATION

Cabins	3
Berths	8
Interior	mahogany
Layout	yes
Floor	teak
Open cockpit	yes
Aft deck	yes
Saloon	yes
Headroom saloon (m)	1,92
Heating	diesel ducted hot air Webasto not working
Navigation center	yes
Chart table	yes
Aft Cabin	yes
Galley	yes
Countertop	plastic
Sink	stainless steel 2
Cooker	calor gas
Oven	yes
Fridge	2 boxen
Hot water system	220V + engine
Water pressure system	electrical
Owners cabin	double bed
Bed length (m)	1.95 x 1.45



Wardrobe	hanging and shelves
Bathroom	shared
Toilet	shared
Toilet system	manual
Wash basin	at the toilet
Shower	shared
Guest cabin 1	v-bed
Bed length (m)	1,90
Wardrobe	hanging and shelves
Bathroom	shared
Toilet	shared
Toilet system	manual
Wash basin	at the toilet
Shower	shared
Guest cabin 2	bunk bed

## MACHINERY

No of engines	1
Make	Perkins
Type	Prima M50
HP	55,00
kW	40,42
Fuel	diesel
Year installed	1991
Year of overhaul	yes
Maximum speed (kn)	7
Engine hours	1971
Engine cooling system	freshwater heat exchanger
Drive	shaft
Gearbox	hydraulic
Bowthruster	electric Sidepower



Propeller type	folding
Propeller blades	yes
Electric bilge pump	yes
Bilge alarm	yes
Batteries	yes
Start battery	1
Service battery	5
Battery monitor	yes
Battery charger	Victron

## NAVIGATION

Compass	Plastimo
Depth sounder	Stow
Log	ST 60 Raymarine
Windset	ST 60 Raymarine
VHF	Icom M601
Autopilot	ST6002
Rudder angle indicator	ST6002
Radar	Furuno 1832
GPS	Furuno GPS 31
Navtex	Weatherman
Navigation lights	yes

## EQUIPMENT

Sprayhood	yes
Cockpit cover	yes
Boarding ladder	stainless steel
Deck shower	yes
Anchor	CQR Plough
Anchor chain	yes
Sea railing	stainless steel



Life raft	container
Radio-cd player	SONY

## RIGGING

Rigging	sloop
Standing rigging	Dyform
Brand mast	Kemp
Material mast	aluminium
Mainsail	37,5m2 2004
Mainsail cover	yes
Battcars	yes
Genoa	52,2m2 2008
Primary sheet winch	Lewmar
Secondary sheet winch	Lewmar



# MOODY 425





# MOODY 425



# MOODY 425



# MOODY 425





# MOODY 425



# MOODY 425



# MOODY 425





# MOODY 425



# MOODY 425

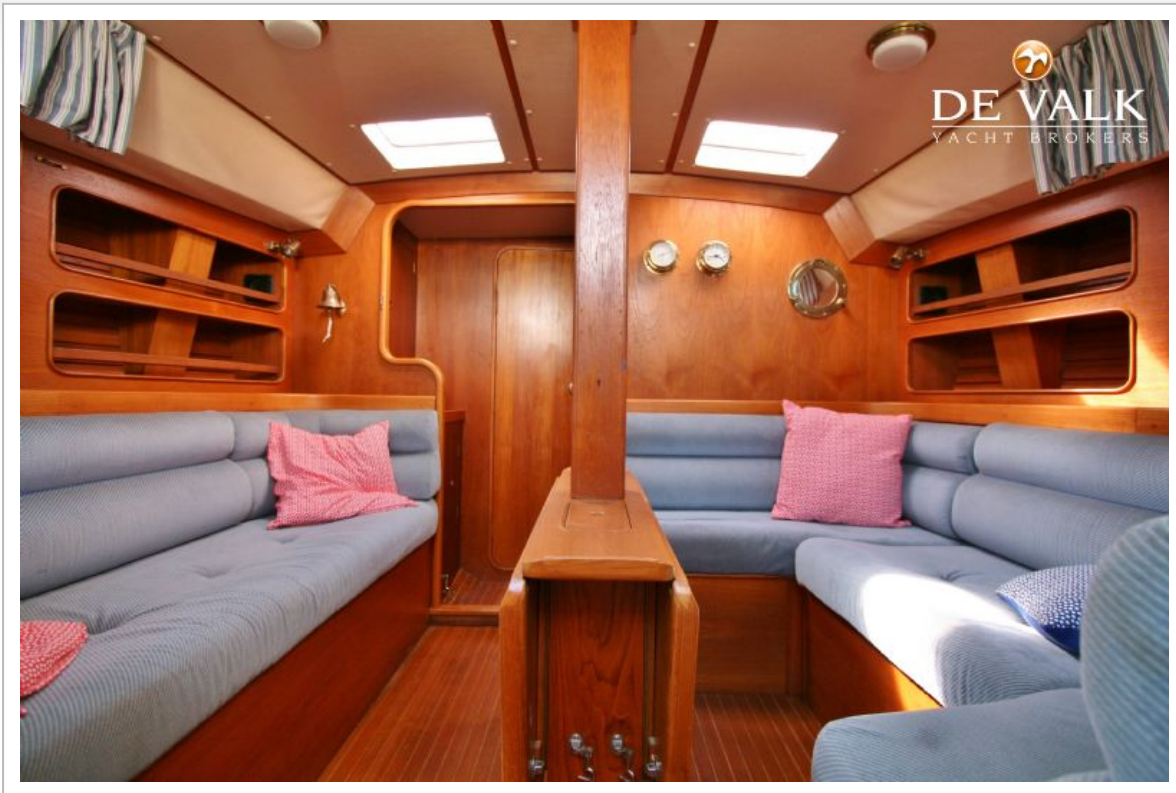




# MOODY 425

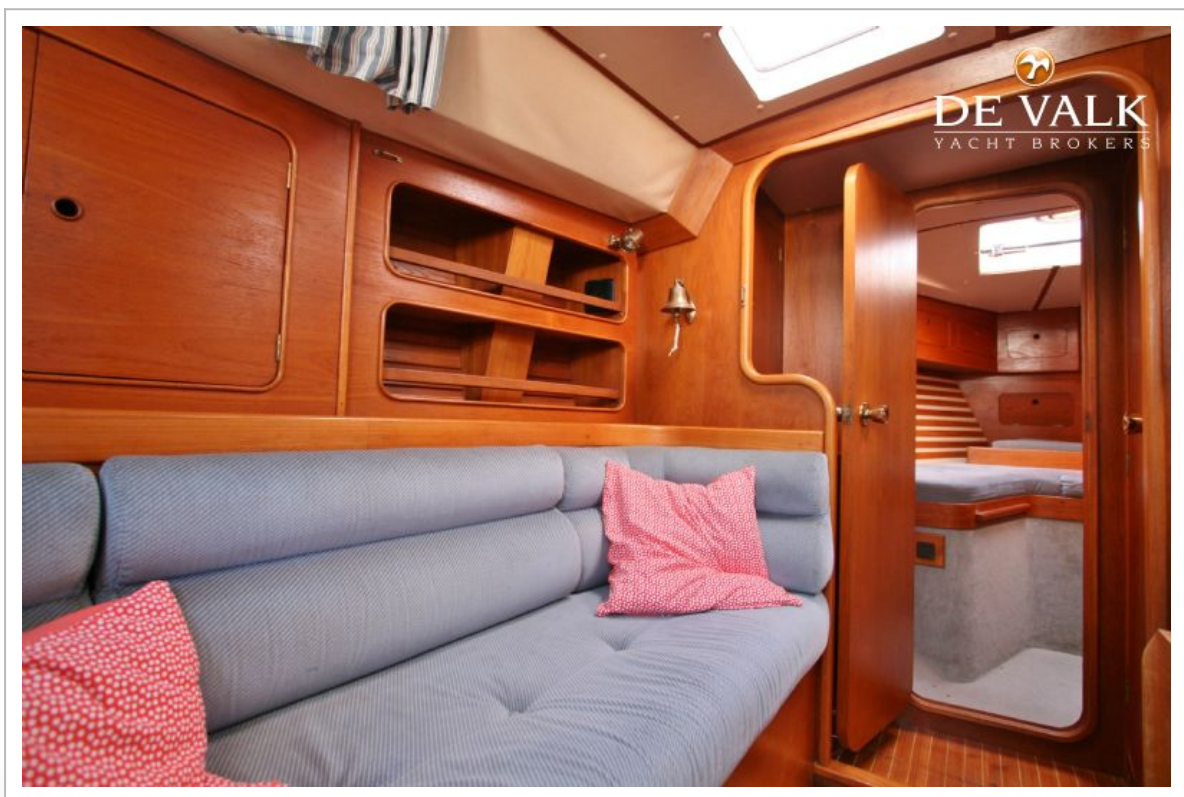


# MOODY 425

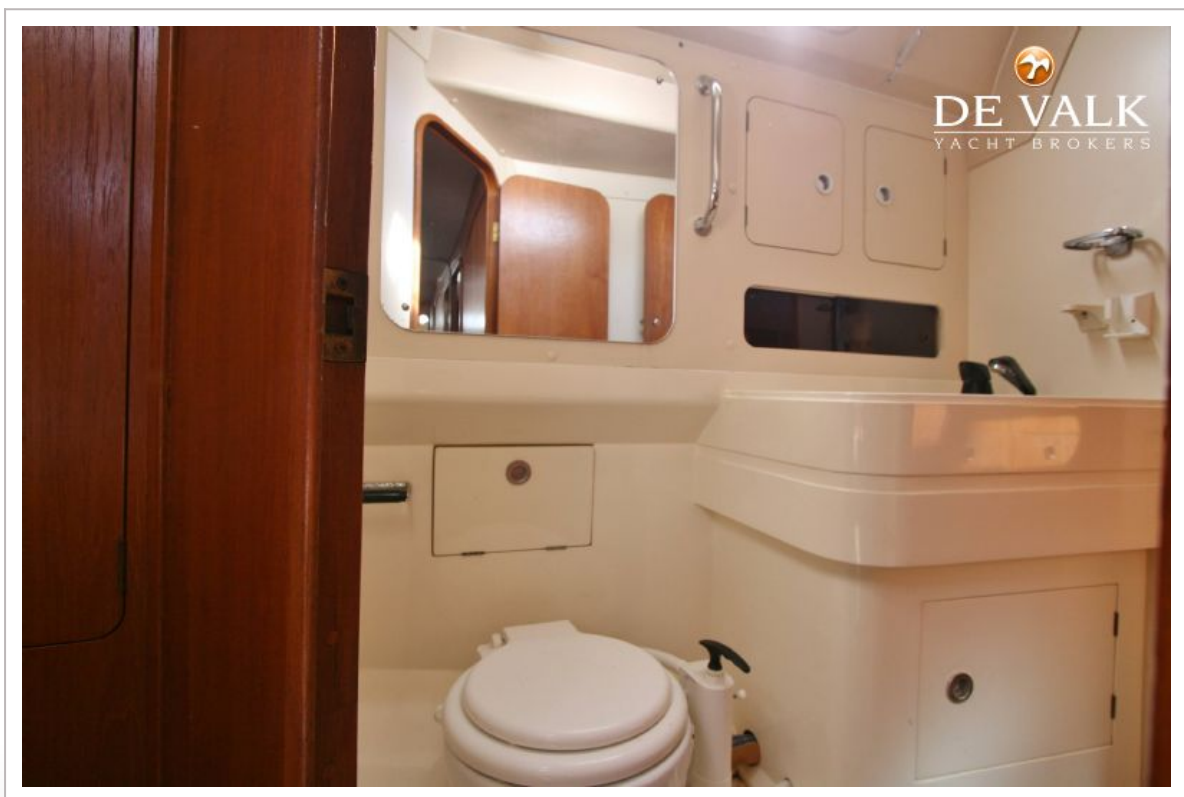




# MOODY 425

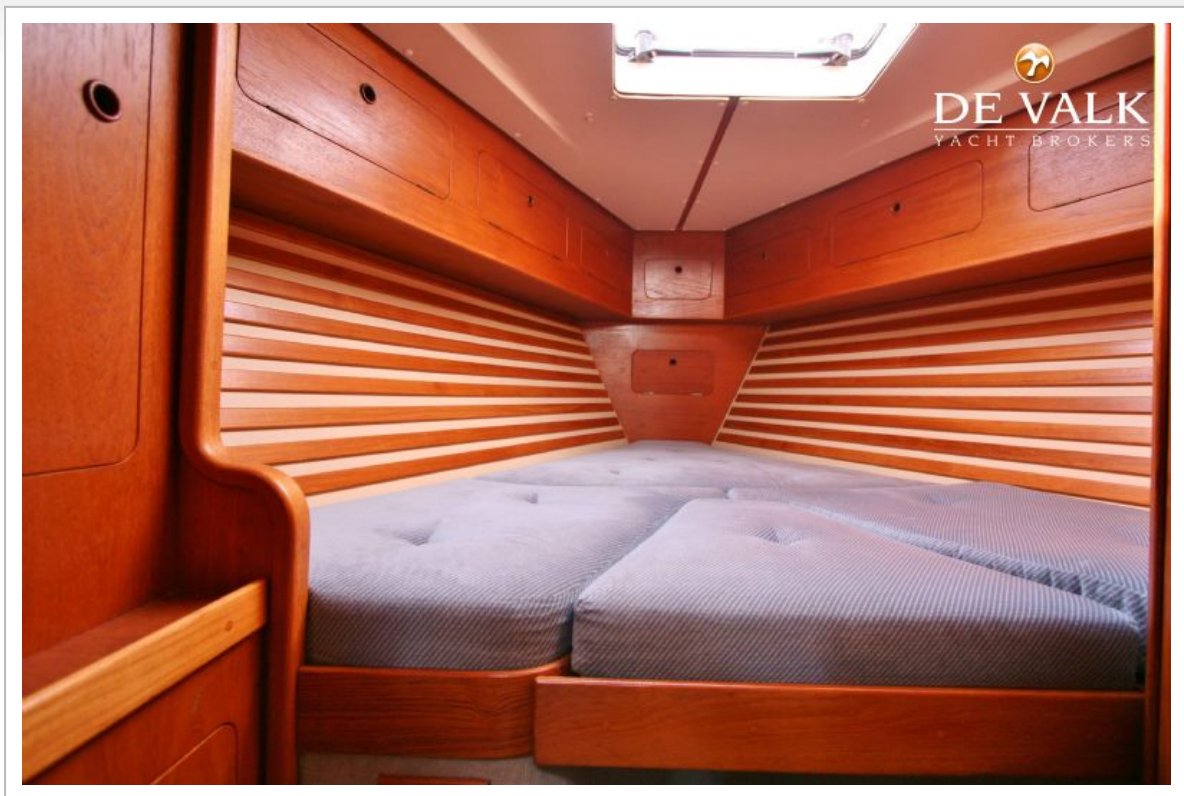


# MOODY 425

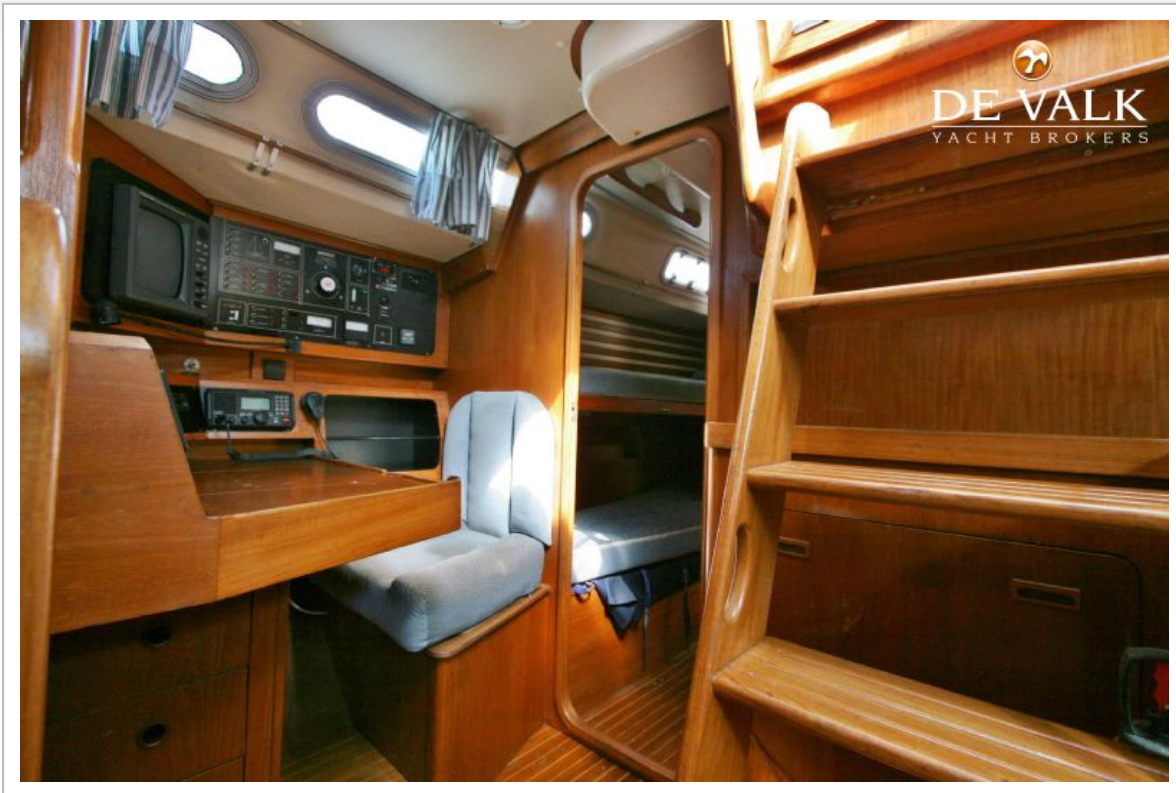




# MOODY 425



# MOODY 425

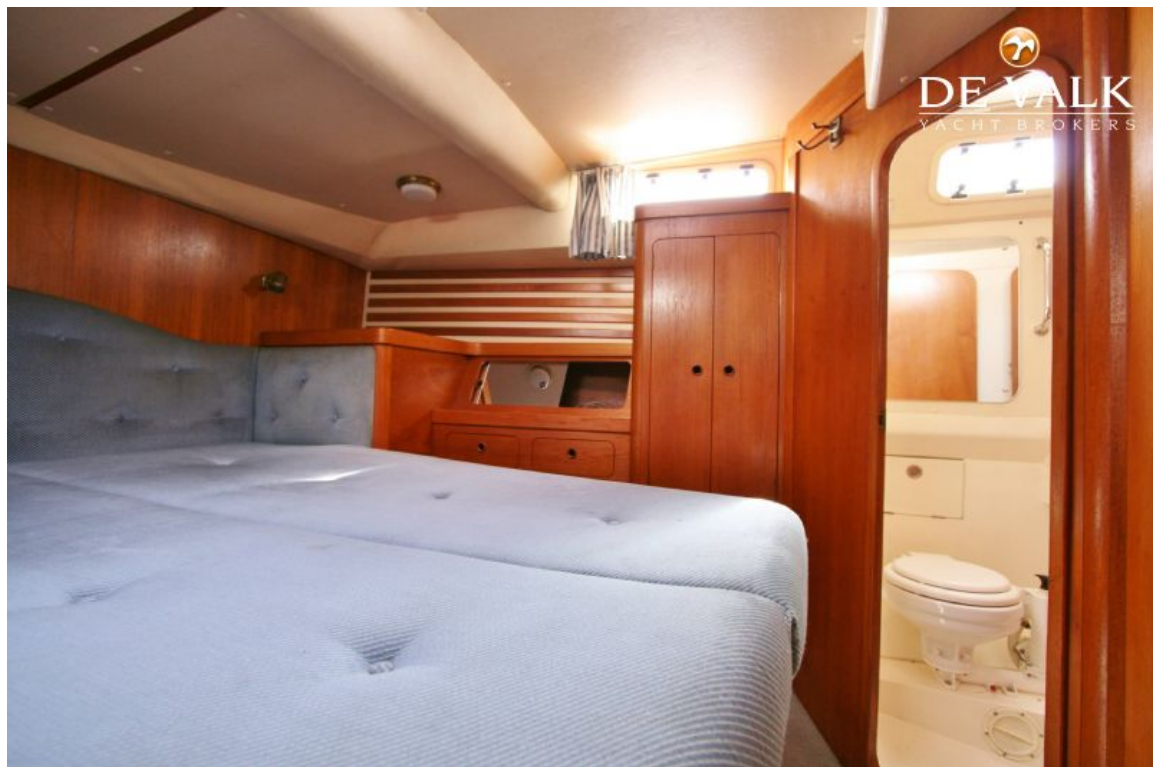




# MOODY 425

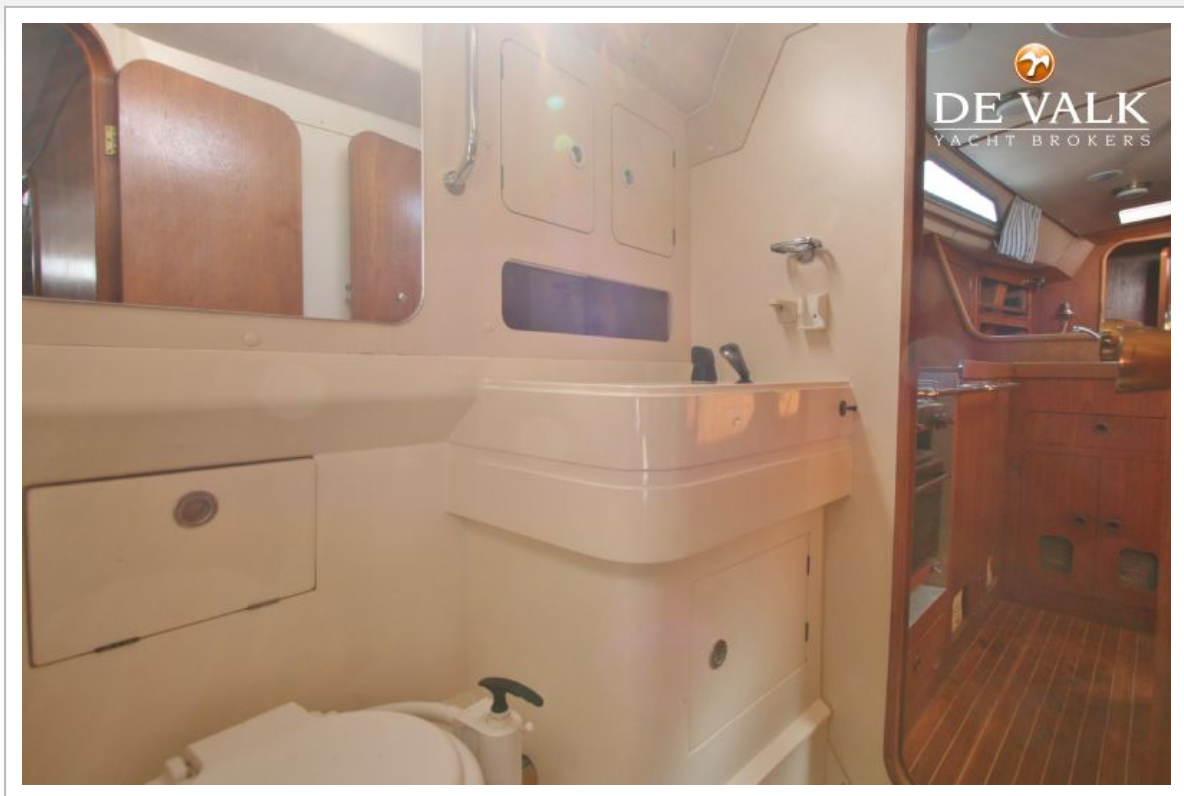


# MOODY 425





# MOODY 425



# MOODY 425

