



DE VALK
YACHT BROKERS



HANSE 430



DE VALK
YACHT BROKERS

BROKER'S COMMENTS

Well-maintained, well-equipped Hanse 430. Lovely spacious cockpit with plenty of storage and shelter at sea. Equipped with electric winches, self-tacking jib, retractable bow thruster and electric anchor winch, this Hanse 430 is also very good for short-handed sailing. Modern lines and good sailing characteristics combined with unequalled ease of handling. Popular layout with owner's cabin with central double bed and en suite bathroom and two guest cabins aft with shared facilities. Ideal family boat for fast and safe cruising.

Henri van Eelen

SPECIFICATIONS

Dimensions	13.15 x 4.18 x 2.20 (m)	Builder	HanseYachts AG
Built	2010	Cabins	3
Material	GRP	Berths	6
Engine(s)	1 x Yanmar 4-JHSE diesel	Hp/Kw	55.00 (hp), 40.50 (kw)
Asking price	sold (VAT)	Lying	at sales office

CONTACT

Sales office	De Valk Hindeloopen B.V.	Telephone	+31 514 52 40 00
Address	Oosterstrand 1 8713 JS Hindeloopen NL	E-mail	hindeloopen@devalk.nl

DISCLAIMER

These particulars are given in good faith as supplied but cannot be guaranteed.



GENERAL

Model	HANSE 430
Type	sailing yacht
LOA (m)	13,15
Beam (m)	4,18
Draft (m)	2,20
Air draft (m)	21,90
Headroom (m)	1,95
Year built	2010
Builder	HanseYachts AG
Country	Germany
Designer	Judel Vrolijk
Displacement (t)	11
Ballast (tonnes)	lead in steel
CE norm	A
Hull material	GRP
Hull colour	antracite gray
Hull shape	round-bilged
Superstructure material	GRP
Superstructure (mm)	yes
Rubbing strake	wood
Deck material	GRP
Deck finish	teak
Antifouling (year)	2021
Window frame	aluminium
Window material	polycarbonate
Insulation	foam
Radar arch	non collapsible
Fuel tank (litre)	stainless steel 350L= 240L+ 110L
Level indicator (fuel tank)	yes
Freshwater tank (litre)	polyethylene 300L



Level indicator (freshwater)	yes
Blackwater tank (litre)	polyethylene 2x 20L
Blackwater tank extraction	deck extraction + pump
Wheel steering	mechanical
Emergency tiller	yes

ACCOMMODATION

Cabins	3
Berths	6
Interior	cherry
Floor	woodprint
Open cockpit	yes
Headroom saloon (m)	1,95m
Heating	diesel ducted hot air Webasto
Chart table	yes
Galley	yes
Countertop	corian
Sink	stainless steel 2x
Cooker	yes
Fridge	yes
Freezer	In Fridge
Hot water system	220V + engine
Water pressure system	electrical
Owners cabin	v-bed
Bed length (m)	2mx 2mx 1m
Wardrobe	hanging/drawers/shelves
Bathroom	en suite
Toilet	en suite
Toilet system	manual
Wash basin	in the bathroom
Shower	en suite



Guest cabin 1	v-bed
Bed length (m)	2mx 1.7m x 1m
Wardrobe	hanging/drawers/shelves
Bathroom	shared
Toilet	shared
Toilet system	manual
Wash basin	in the bathroom
Shower	shared
Guest cabin 2	v-bed
Bed length (m)	2mx 1,5mx 1m
Wardrobe	hanging/drawers/shelves
Bathroom	shared
Toilet	shared
Toilet system	manual
Wash basin	in the bathroom
Shower	shared

MACHINERY

No of engines	1
Make	Yanmar
Type	4-JHSE
HP	55
kW	40,50
Fuel	diesel
Year installed	2010
Maximum speed (kn)	8
Cruising speed (kn)	7
Consumption (l/hr)	5
Range (nm)	500
Engine hours	500-700
Engine cooling system	freshwater heat exchanger



Saildrive seal	2021
Engine controls	bowden cable
Bowthruster	yes
Propeller type	folding
Propeller blades	3x
Manual bilge pump	yes
Electric bilge pump	yes
Start battery	1x 70 Ah AGM
Service battery	2x 165 Ah AGM
Battery charger	yes
Shorepower	with cable

NAVIGATION

Compass	Contest 130
Depth sounder	Simrad
Log	Simrad
Windset	Simrad
Repeater	B&G 2021 2x
VHF	Simrad
Autopilot	Simrad
Rudder angle indicator	Simrad
Radar/GPS/plotter	Simrad
Electronic chart(s)	North Europa
AIS receiver	yes

EQUIPMENT

Sprayhood	Uk de Vries canvas 2020 met verlenging
Cockpit cover	Cover behind sprayhood
Cockpit table	yes
Boarding ladder	stainless steel
Anchor	CQR Plough



Anchor chain	30m RVS
Windlass	electrical
Sea railing	stainless steel
Grab rail (superstructure)	stainless steel
Railing side opening gates	yes
Life raft	valise (or bag) 2021 check
Life raft (pers)	6
Radar reflector	yes
Speakers in salon	yes
Fire extinguisher	Niet gekeurd

RIGGING

Rigging	sloop
Standing rigging	wire
Brand mast	Seldén
Material mast	aluminium
Mainsail	UK tape drive 2010 + Dacron 1 used 1x, Dutchmen berge system
Mainsail cover	Canvas 2021
Battcars	yes
High aspect	Uk tape drive 2021 + Dacron zeil used 1x
Genoa furler	yes
Gennaker	Code Zero Uk sails
Staysail furler	Kotter stagfok 2013
Stormjib	yes
Self tacking jib installation	yes
Reefing System	quick-one-line-reefing
Backstay adjuster	hydraulic
Boomvang	gasspring
Primary sheet winch	Lewmar 54
Halyard winches	Lewmar 46 stb Electric



HANSE 430



HANSE 430



HANSE 430



HANSE 430



HANSE 430



HANSE 430



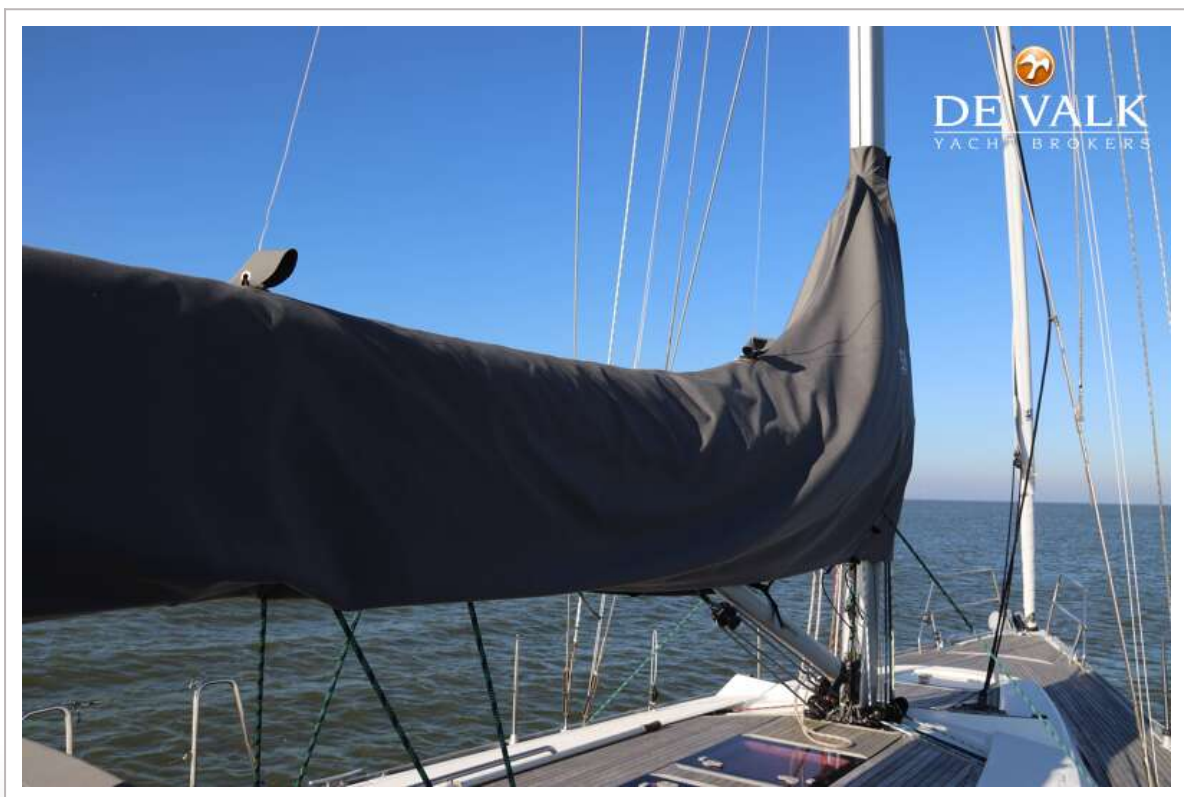
HANSE 430



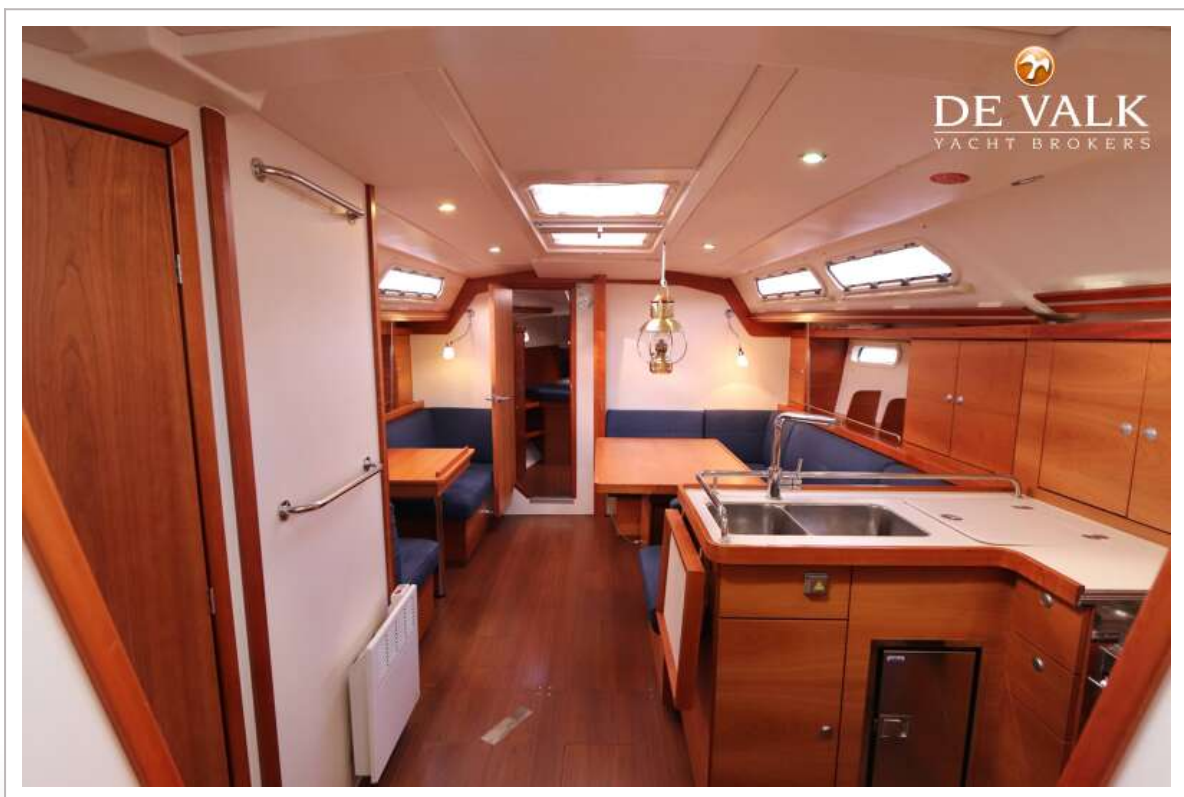
HANSE 430



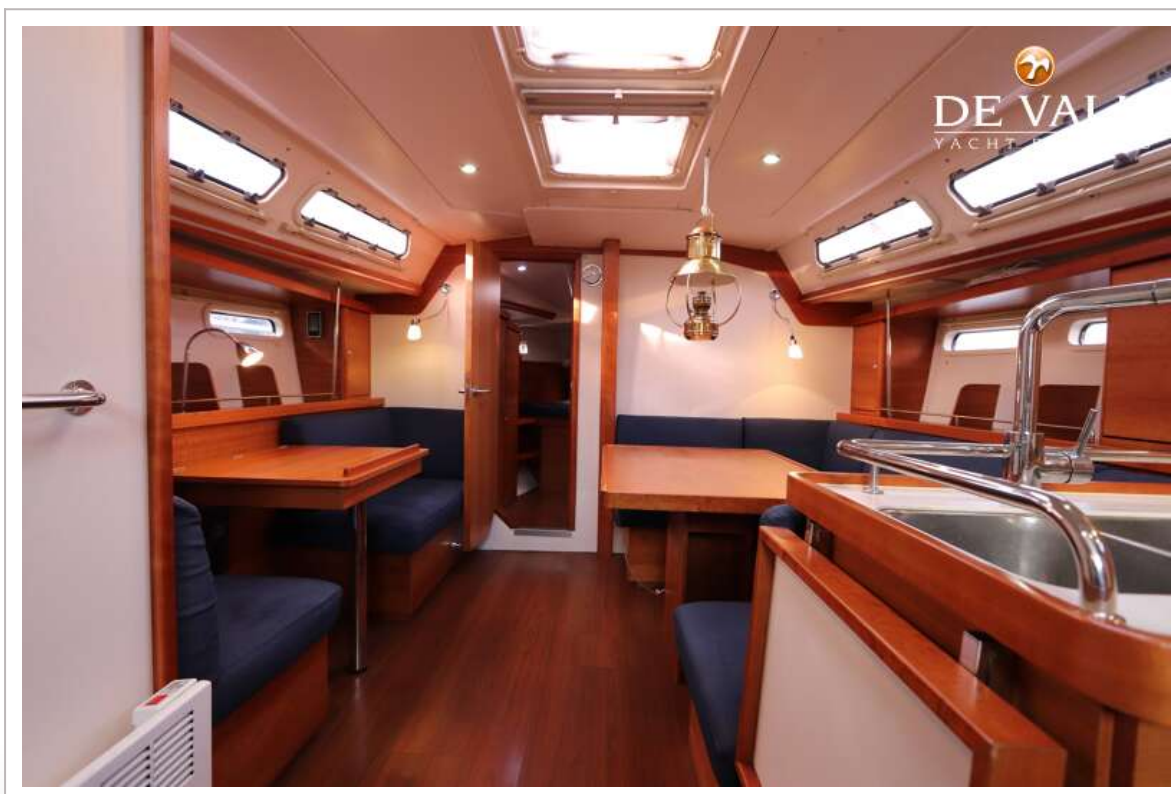
HANSE 430



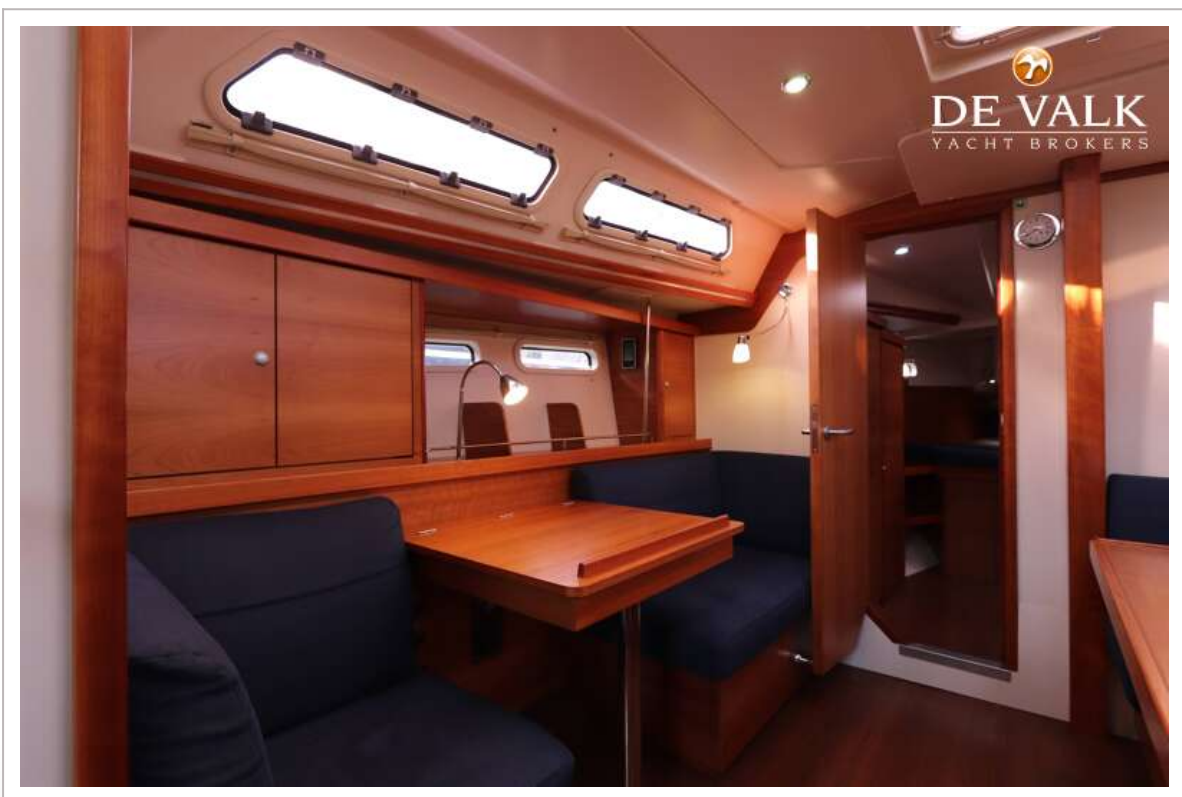
HANSE 430



HANSE 430



HANSE 430



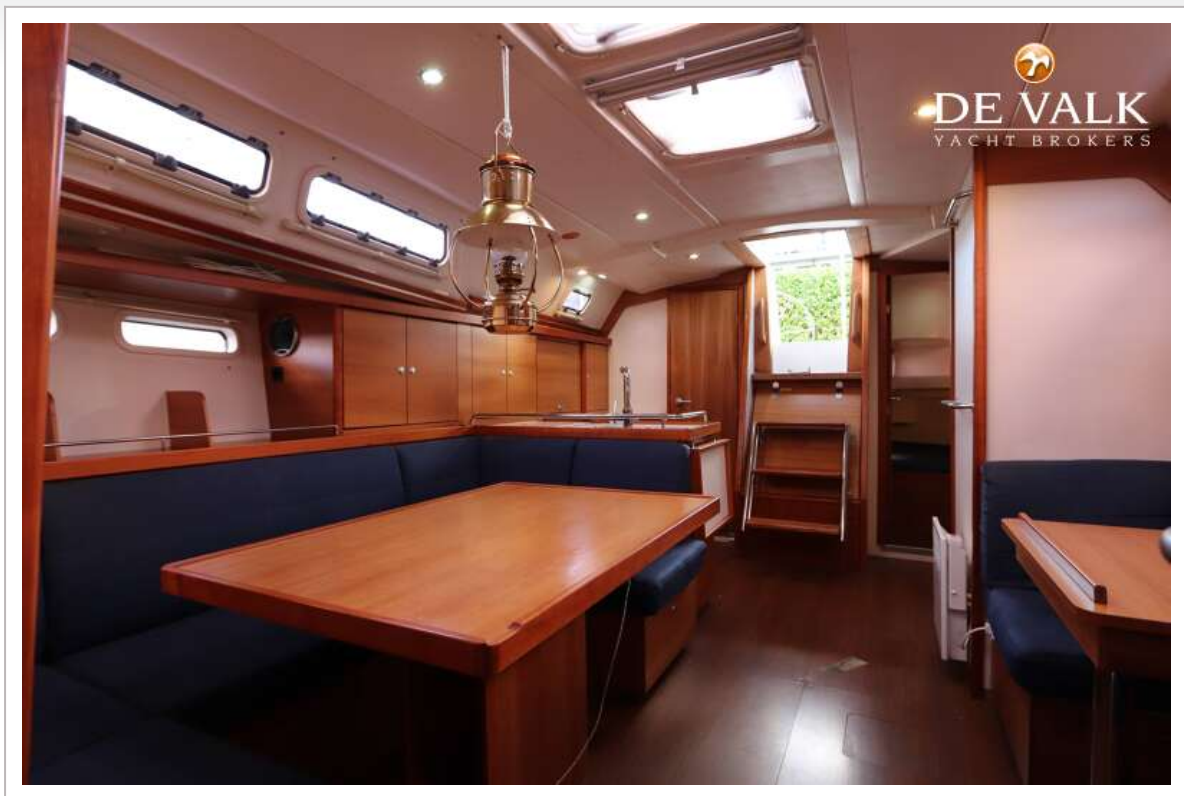
HANSE 430



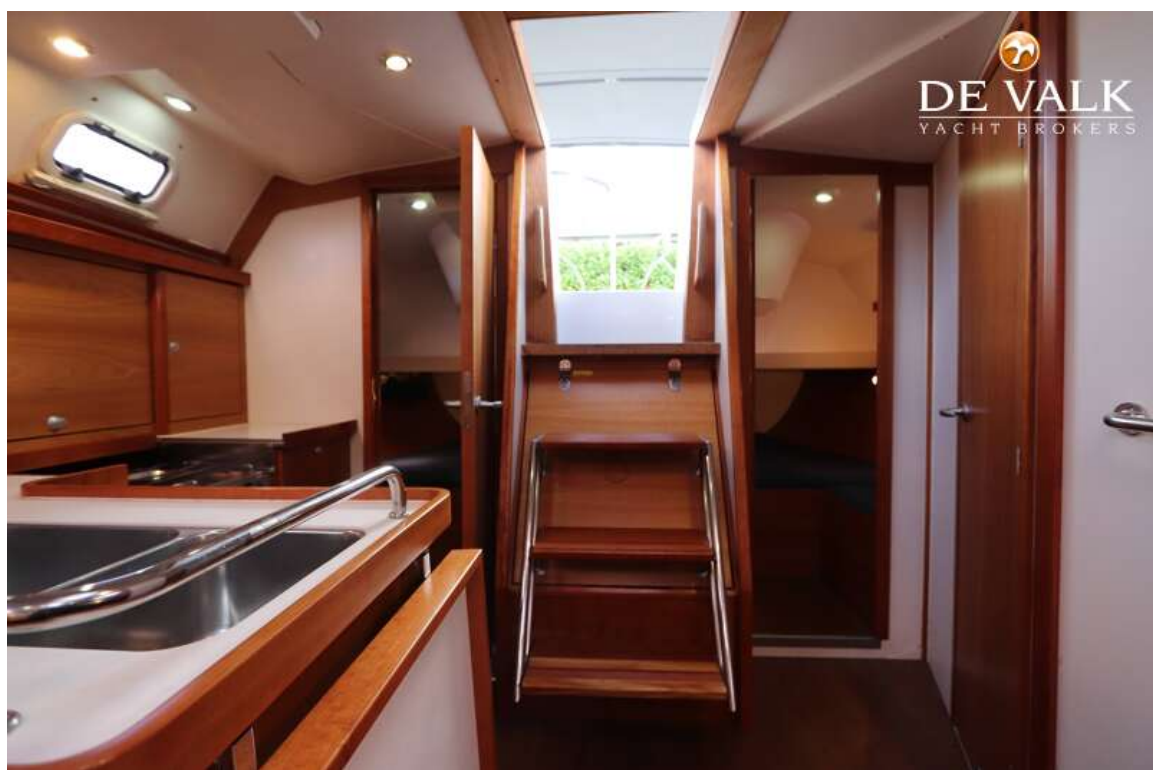
HANSE 430



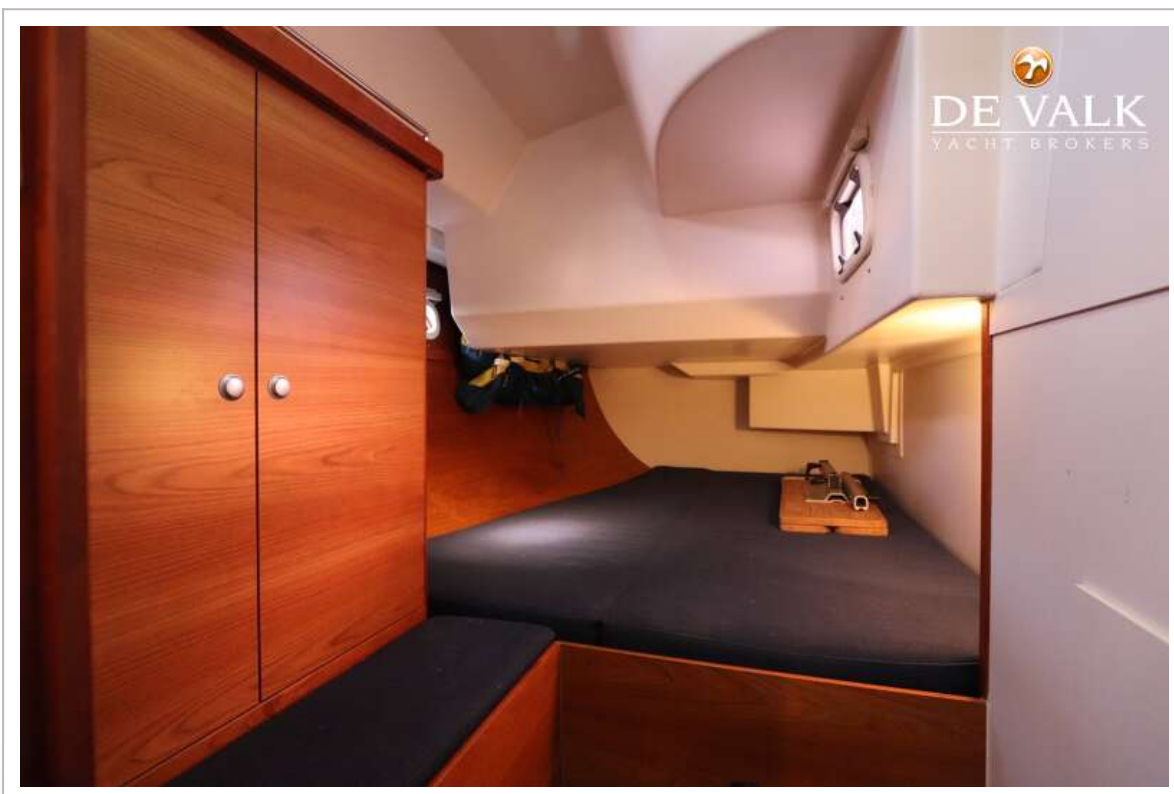
HANSE 430



HANSE 430



HANSE 430



HANSE 430

