



DE VALK
YACHT BROKERS



PUFFIN 37



DE VALK
YACHT BROKERS

BROKERAGE | CHARTER | BERTHS | FINANCE | INSURANCE | YACHT MANAGEMENT

BROKER'S COMMENTS

The key words for the development of the Puffin Classic series were: space, speed, easy to handle, able to dry out, strong and safe. The most beautiful places are often to be found among shallower waters. That's why they developed a centreboard version of the Puffin.

Johan Schootstra

SPECIFICATIONS

Dimensions	13.35 x 3.75 x 1,00 / 2.20 (m)	Builder	Puffin & Zaca Yachts
Built	2007	Cabins	2
Material	Composite	Berths	5
Engine(s)	1 x Yanmar 3JH4-E diesel	Hp/Kw	40.00 (hp), 29.40 (kw)
Asking price	sold (VAT)	Lying	contact Hindeloopen

CONTACT

Sales office	De Valk Hindeloopen B.V.	Telephone	+31 514 52 40 00
Address	Oosterstrand 1 8713 JS Hindeloopen NL	E-mail	hindeloopen@devalk.nl

DISCLAIMER

These particulars are given in good faith as supplied but cannot be guaranteed.



GENERAL

Model	PUFFIN 37
Type	sailing yacht
LOA (m)	13,35
Beam (m)	3,75
Draft (m)	2,20
Draft min (m)	1,00
Air draft (m)	12,40
Headroom (m)	2,05
Year built	2007
Builder	Puffin & Zaca Yachts
Country	The Netherlands
Designer	Olivier F. van Meer Design
Displacement (t)	11
CE norm	A
Hull material	composite
Hull colour	white
Hull shape	roundbilged
Keel type	centreboard
Superstructure material	mahogany
Deck material	composite
Deck finish	teak
Superstructure deck finish	teak
Cockpit deck finish	teak
Window frame	stainless steel
Window material	yes
Fuel tank (litre)	340
Level indicator (fuel tank)	yes
Freshwater tank (litre)	400
Level indicator (freshwater)	yes
Blackwater tank (litre)	90



Tiller	yes
--------	-----

ACCOMMODATION

Cabins	2
Berths	5
Interior	mahogany
Open cockpit	yes
Saloon	yes
Headroom saloon (m)	2,05
Heating	diesel ducted hot air Webasto
Chart table	yes
Aft Cabin	yes
Dinette	yes
Galley	yes
Countertop	corian
Sink	stainless steel
Cooker	calor gas 3
Oven	yes
Fridge	with freezer compartment 50L Isotherm
Hot water system	220V + engine 40L
Water pressure system	yes
Owners cabin	double bed
Bed length (m)	2,05
Bathroom	en suite
Toilet	shared Jabsco
Toilet system	manual
Wash basin	at the toilet
Shower	shared
Guest cabin 1	double bed
Bed length (m)	2,05



MACHINERY

No of engines	1
Make	Yanmar
Type	3JH4-E
HP	40,00
kW	29,40
Fuel	diesel
Year installed	2007
Maximum speed (kn)	7
Cruising speed (kn)	6
Consumption (l/hr)	3
Engine cooling system	freshwater heat exchanger
Drive	sail-drive
Engine controls	mechanical
Bowthruster	electric Vetus
Propeller type	folding
Propeller blades	2
Manual bilge pump	yes
Electric bilge pump	yes
Electrical installation	12 and 220
Start battery	1x 46Ah
Service battery	2x 225Ah
Battery charger	Victron
Shorepower	with cable

NAVIGATION

Compass	Silva
Depth sounder	Simrad IS12
Log	Simrad IS12
Windset	Simrad IS12
VHF	Uniden Oceanus DSC



Plotter	Simrad CX33
---------	-------------

EQUIPMENT

Sprayhood	yes
Cockpit cushions	yes
Boarding ladder	stainless steel
Anchor	CQR Plough 20kg
Windlass	electrical
Capstan	yes
Sea railing	stainless steel
Railing side opening gates	yes
Pushpit	yes
Pulpit	yes
Fenders	yes
Mooring lines	yes
Radio-cd player	yes
Speakers in salon	yes
Fire extinguisher	yes

RIGGING

Rigging	gaff-rig
Material mast	wood
Mainsail	yes
Mainsail cover	yes
Staysail	yes
Yankee	Flexibel Profurl
Reefing System	2
Secondary sheet winch	2x Arco-Hutton 40
Genoa sheetwinches	2x Arco-Hutton 45
Halyard winches	1x Arco-Hutton 35



PUFFIN 37



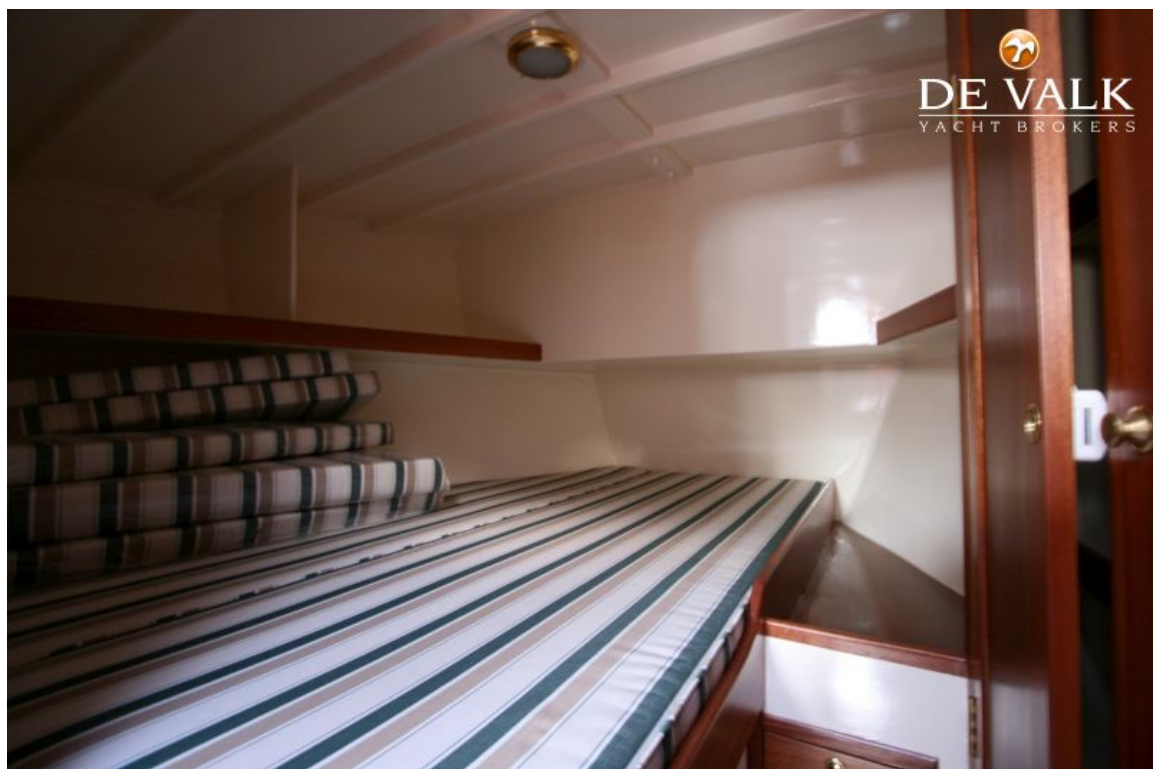
PUFFIN 37



PUFFIN 37



PUFFIN 37



PUFFIN 37



PUFFIN 37





PUFFIN 37

