



DE VALK  
YACHT BROKERS



## SPIRIT 37



DE VALK  
YACHT BROKERS

## BROKER'S COMMENTS

Perfectly maintained Spirit 37. Full accommodation and comfort in two cabins and saloon combined with a good design from de Ridder. A solid and safe cruiser for friends and family with very good performance under sail and engine. Fully equipped for intensive use with all "gadgets" like radar, chart plotter, navtex, autopilot, removable forestay, heating, six sails etc.

*Johan Schootstra*

## SPECIFICATIONS

<b>Dimensions</b>	11.60 x 3.66 x 1.98 (m)	<b>Builder</b>	van Heijgen Bootbouw
<b>Built</b>	1998	<b>Cabins</b>	2
<b>Material</b>	GRP	<b>Berths</b>	6
<b>Engine(s)</b>	1 x Volvo D1-30B diesel	<b>Hp/Kw</b>	29.00 (hp), 21.32 (kw)
<b>Asking price</b>	sold (VAT )	<b>Lying</b>	contact Hindeloopen

## CONTACT

<b>Sales office</b>	De Valk Hindeloopen	<b>Telephone</b>	+31 514 52 40 00
<b>Address</b>	Oosterstrand 1 8713 JS Hindeloopen The Netherlands	<b>E-mail</b>	hindeloopen@devalk.nl

## DISCLAIMER

These particulars are given in good faith as supplied but cannot be guaranteed.



# SPIRIT 37

## GENERAL

<b>Model</b>	SPIRIT 37
<b>Type</b>	sailing yacht Sail yacht
<b>LOA (m)</b>	11,60
<b>LWL (m)</b>	11,30
<b>Beam (m)</b>	3,66
<b>Draft (m)</b>	1,98
<b>Air draft (m)</b>	16,45
<b>Headroom (m)</b>	1,90
<b>Year built</b>	1998
<b>Builder</b>	Van Heijgen Bootbouw
<b>Country</b>	Belgium
<b>Designer</b>	De Ridder
<b>Displacement (t)</b>	5,8
<b>Ballast (tonnes)</b>	cast iron 2.4 ton
<b>Hull material</b>	GRP
<b>Hull colour</b>	white
<b>Deck material</b>	GRP
<b>Deck finish</b>	teak
<b>Cockpit deck finish</b>	teak
<b>Antifouling (year)</b>	2013
<b>Window frame</b>	Aluminum
<b>Window material</b>	Toughened glass
<b>Fuel tank (litre)</b>	Stainless Steel 1x 70 litre
<b>Freshwater tank (litre)</b>	Stainless Steel 2 x 130 litre
<b>Wheel steering</b>	Mechanical Whitlock Marine
<b>Emergency tiller</b>	Yes

## ACCOMMODATION

<b>Cabins</b>	2
<b>Berths</b>	4 + 2 6



Interior	Teak
Floor	Teak
Open cockpit	Yes
Saloon	Yes
Headroom saloon (m)	1,90
Heating	Diesel ducted hot air
Chart table	Yes
Aft Cabin	Yes
Convertible berth	Yes
Galley	U - shape
Countertop	wood
Sink	Stainless steel
Cooker	calor gas Eno 2 burner
Oven	Eno
Fridge	Integrated Box
Hot water system	220v + engine Isotherm 22 litre
Water pressure system	electrical
Owners cabin	double bed Aft cabin
Guest cabin 1	v-bed Front cabin
Toilet	Plastimo
Toilet system	Manual
Wash basin	at the toilet
Shower	En suite

## MACHINERY

No of engines	1
Make	Volvo
Type	D1-30B
HP	29,00
kW	21,32
Fuel	diesel



<b>Year installed</b>	2008
<b>Maximum speed (kn)</b>	7
<b>Cruising speed (kn)</b>	6.00
<b>Engine hours</b>	248
<b>Engine cooling system</b>	freshwater heat exchanger
<b>Drive</b>	shaft
<b>Engine controls</b>	manual
<b>Gearbox</b>	Mechanical
<b>Exhaust</b>	Watercooled
<b>Propeller type</b>	Folding
<b>Propeller blades</b>	3
<b>Manual bilge pump</b>	Yes
<b>Electric bilge pump</b>	Yes
<b>Electrical installation</b>	12 / 220 volt
<b>Battery monitor</b>	Yes
<b>Battery charger/inverter</b>	Victron Phonix Multiplus
<b>Shorepower</b>	with cable

## NAVIGATION

<b>Compass</b>	In Cockpit Pastimo Olympic 135
<b>Electric compass</b>	Navigation Table ST 60 multi
<b>Depth sounder</b>	In Cockpit Autohelm
<b>Log</b>	In Cockpit Autohelm
<b>Windset</b>	In Cockpit Autohem
<b>Repeater</b>	Navigation Table ST 60 Multi
<b>VHF</b>	2x Shipmate 8300
<b>Autopilot</b>	In Cockpit ST 6002 smartpilot
<b>Rudder angle indicator</b>	In Cockpit St 6002 Smartpilot
<b>Radar/GPS/plotter</b>	In Cockpit Raymarine E80
<b>Navtex</b>	Navigation table ICS Nav 4



## EQUIPMENT

Sprayhood	Yes
Sprayhood with grab rail	Yes
Cockpit cushions	Yes
Cockpit table	Yes
Bathing platform	Yes
Boarding ladder	stainless steel
Anchor	CQR Plough
Anchor chain	Stainless steel
Anchor chain	Stainless steel
Windlass	electrical Quick
Sea railing	Stainless steel
Grab rail (superstructure)	Wood
Pushpit	Yes
Pulpit	Yes
Lifebuoy	Plastimo
Fenders	Yes
Mooring lines	Yes
Radio-cd player	Yes Pioneer 4x 35W
Cockpit speakers	Yes
Clock - barometer	Yes
Fire extinguisher	Yes

## RIGGING

Rigging	Sloop
Brand mast	Sparcraft
Material mast	Aluminum
Mainsail	10 years old Hagoort sails
Mainsail cover	yes
Fully battened mainsail	yes
High aspect	5 years old Hagoort sails



<b>Genoa</b>	10 years old Hagoort sails
<b>Genoa furler</b>	Furlex 300s
<b>Gennaker</b>	3 years old
<b>Spinnaker</b>	Yes
<b>Removable innerforestay</b>	Yes
<b>Stormjib</b>	yes
<b>Reefing System</b>	Quick-one-line-reefing
<b>Backstay adjuster</b>	mechanical
<b>Boomvang</b>	mechanical Sparcraft
<b>Primary sheet winch</b>	2x Lewmar 40
<b>Genoa sheetwinches</b>	2x Lewmar 50
<b>Spi-pole</b>	Aluminum
<b>Gennaker pole</b>	Aluminum





# SPIRIT 37





# SPIRIT 37



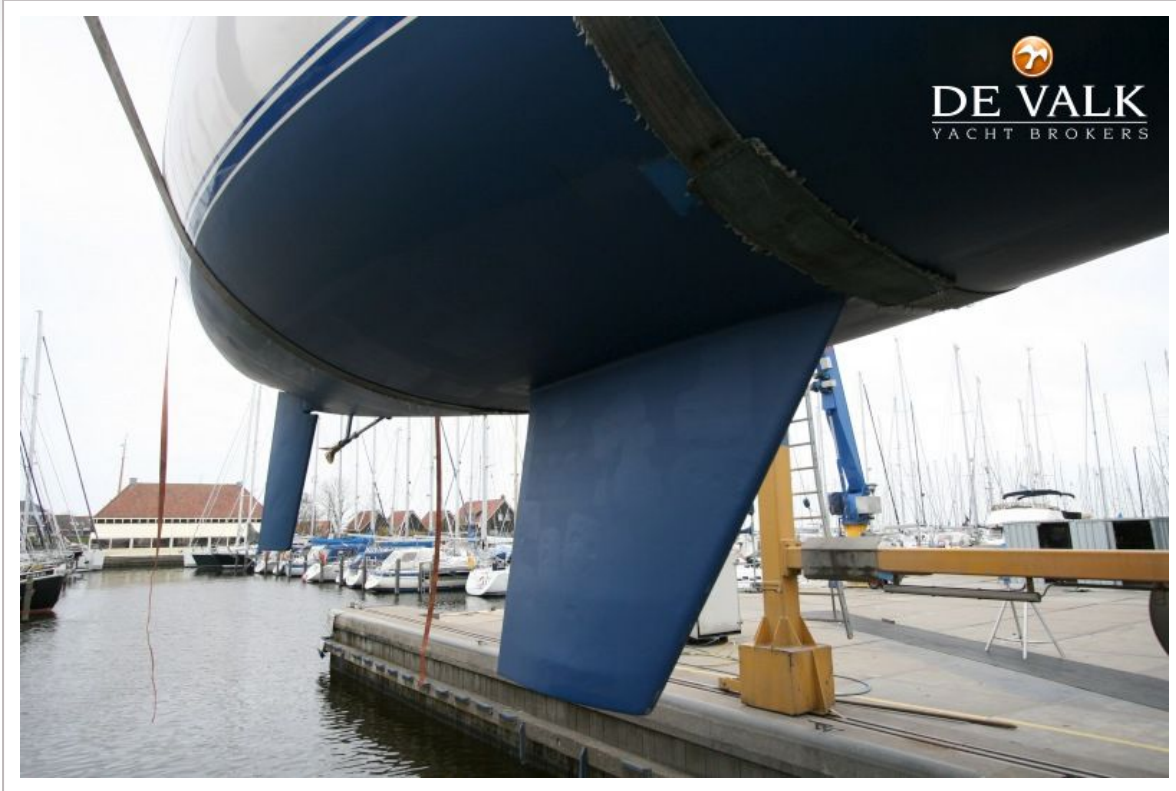
# SPIRIT 37





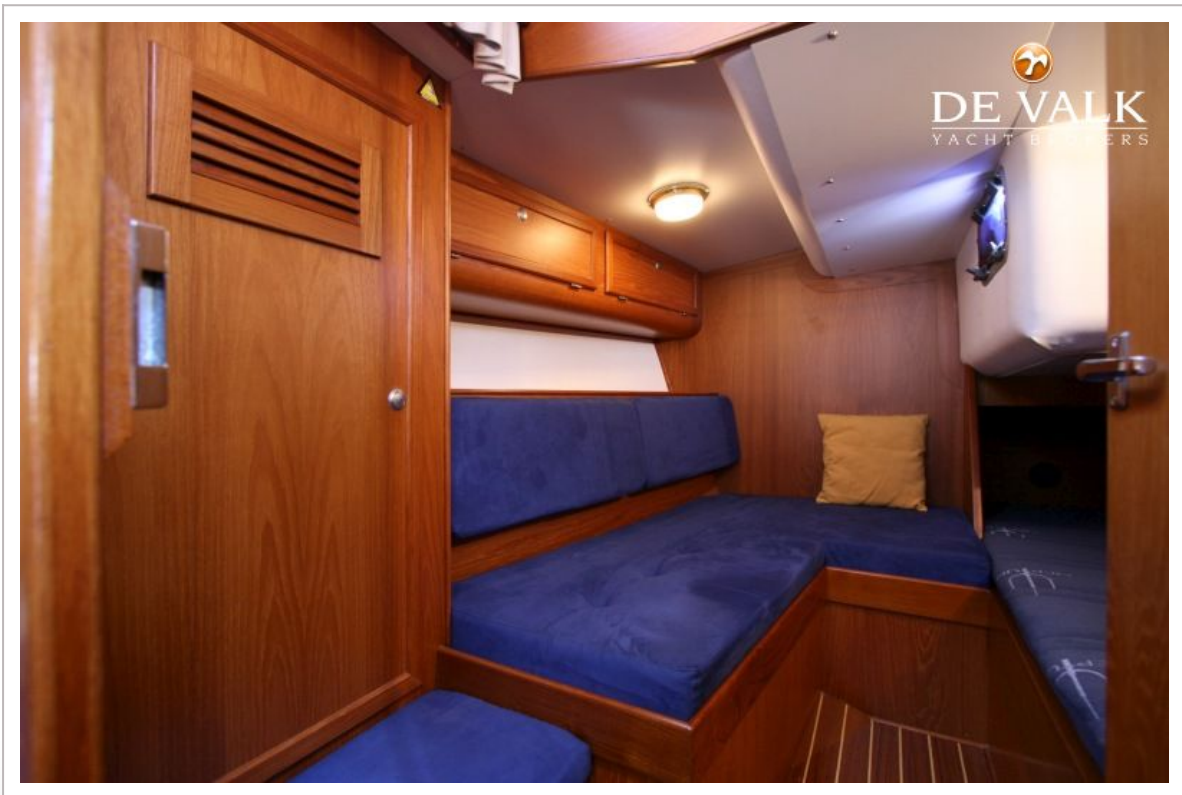
# SPIRIT 37



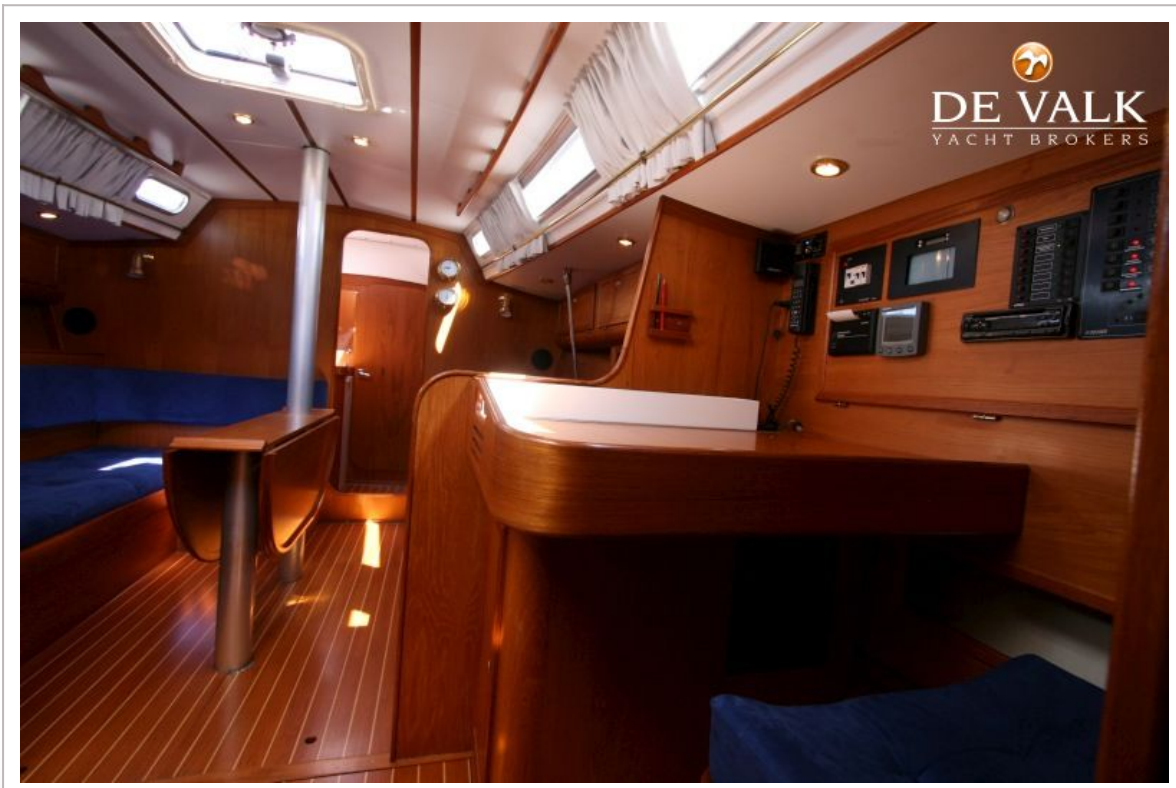




# SPIRIT 37



# SPIRIT 37



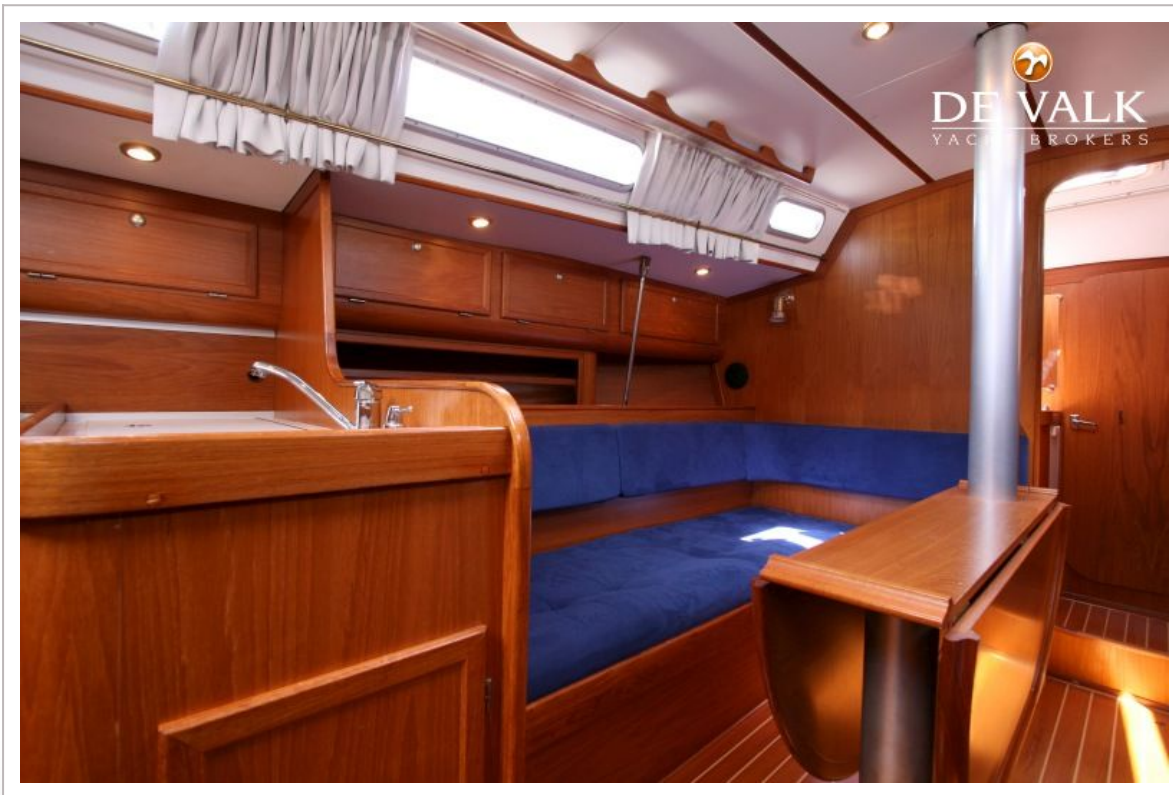


# SPIRIT 37





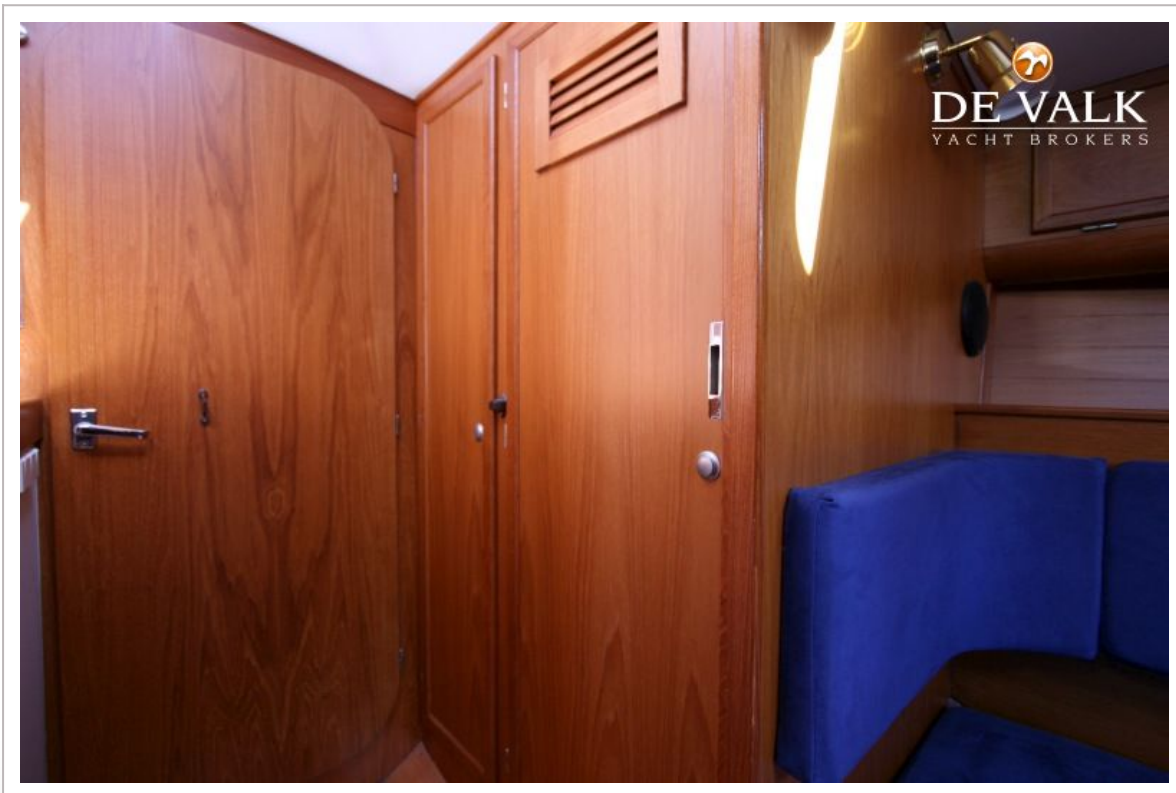
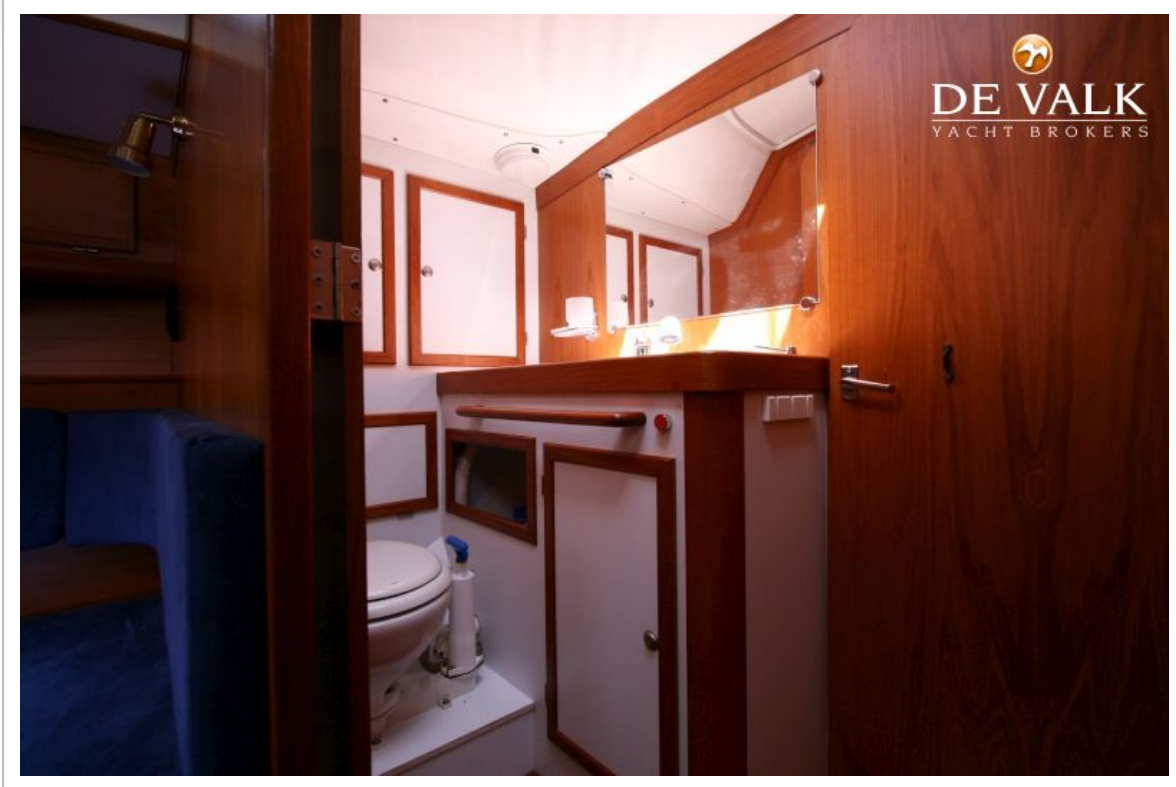
# SPIRIT 37



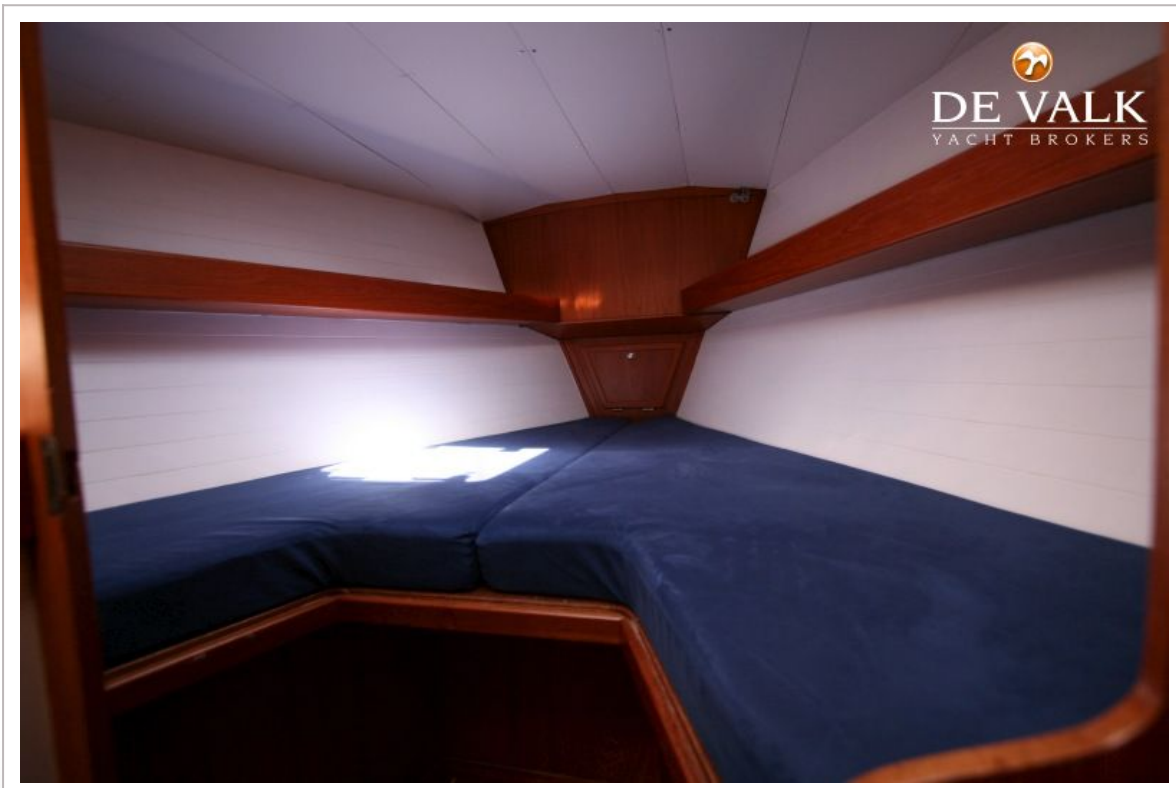
# SPIRIT 37



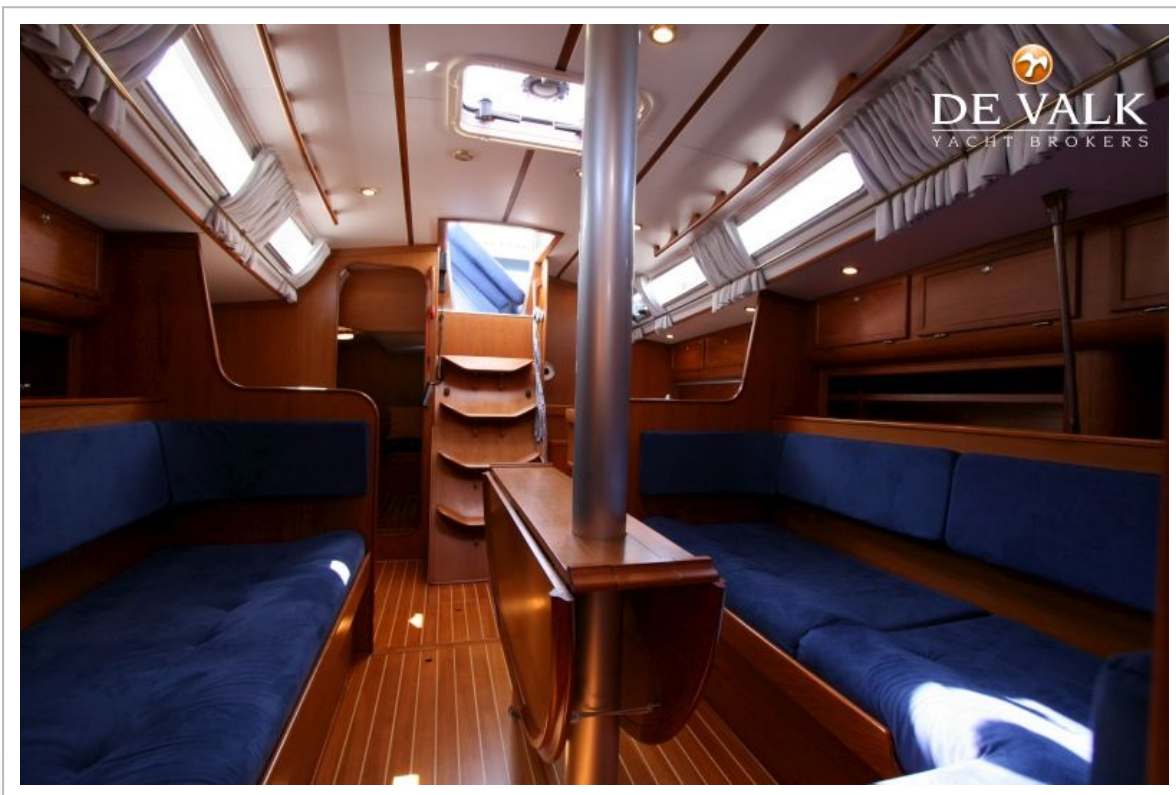
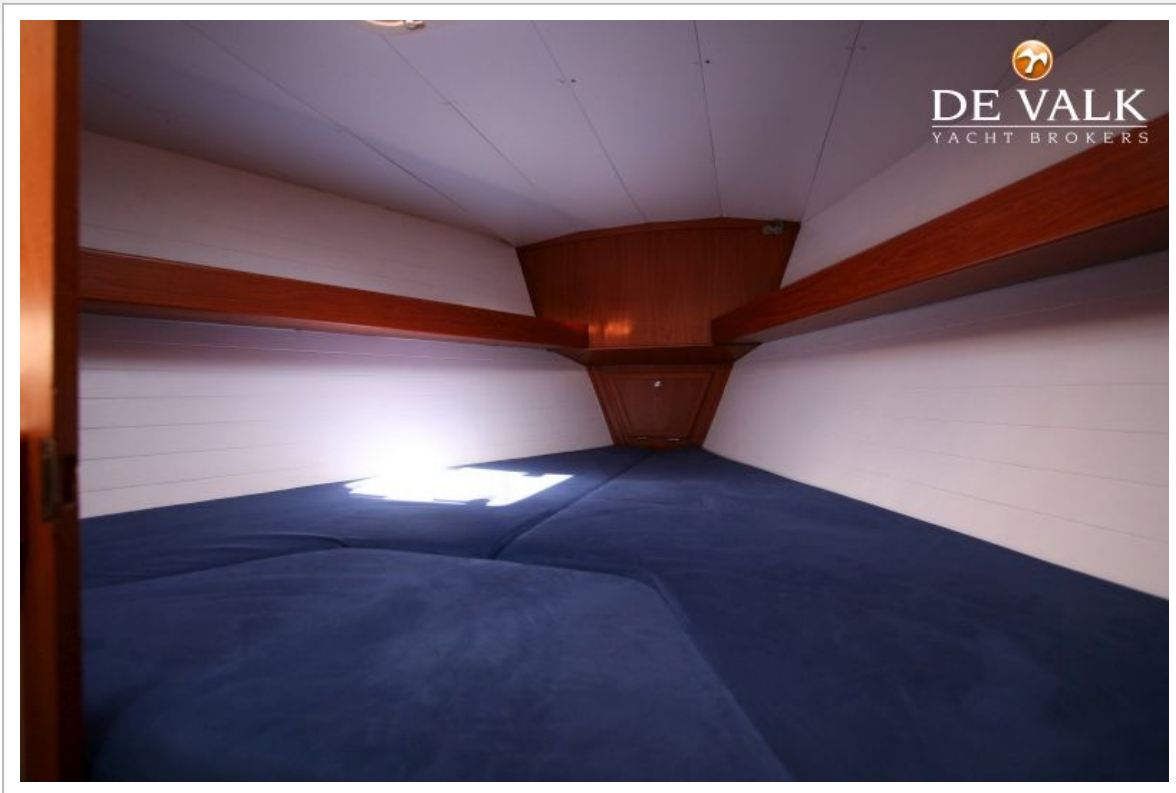




# SPIRIT 37



# SPIRIT 37





# SPIRIT 37

