



DE VALK  
YACHT BROKERS



CONTEST 38S



DE VALK  
YACHT BROKERS

BROKERAGE | CHARTER | BERTHS | FINANCE | INSURANCE | YACHT MANAGEMENT

## BROKER'S COMMENTS

Beautiful craftsmanship throughout, the interior of the Contest 38S has a luxurious atmosphere. Ample stowage space and headroom, combined with a smart and effective layout, makes her ideal for an owner's couple. Complete with Raymarine equipment (2011) and electric bow thruster and windlass. Includes berth till the 1st of may 2014 in Hindeloopen.

*Johan Schootstra*

## SPECIFICATIONS

<b>Dimensions</b>	11.36 x 3.66 x 1.60 (m)	<b>Builder</b>	Conyplex
<b>Built</b>	1990	<b>Cabins</b>	2
<b>Material</b>	GRP	<b>Berths</b>	6
<b>Engine(s)</b>	1 x Volvo Penta 2003T diesel	<b>Hp/Kw</b>	43.00 (hp), 31.61 (kw)
<b>Asking price</b>	sold (VAT )	<b>Lying</b>	at sales office

## CONTACT

<b>Sales office</b>	De Valk Hindeloopen B.V.	<b>Telephone</b>	+31 514 52 40 00
<b>Address</b>	Oosterstrand 1 8713 JS Hindeloopen NL	<b>E-mail</b>	hindeloopen@devalk.nl

## DISCLAIMER

These particulars are given in good faith as supplied but cannot be guaranteed.



## GENERAL

Model	CONTEST 38S
Type	sailing yacht Sailing yacht
LOA (m)	11,36
LWL (m)	9,30
Beam (m)	3,66
Draft (m)	1,60
Air draft (m)	16,50
Headroom (m)	1,90
Year built	1990
Builder	Conyplex
Country	The Netherlands
Designer	Dick Zaal
Displacement (t)	8,5
Ballast (tonnes)	3,5 t
Hull material	GRP
Hull colour	white
Hull shape	roundbilged
Keel type	wing keel
Superstructure material	GRP
Deck material	GRP
Deck finish	teak
Cockpit deck finish	teak
Antifouling (year)	2013
Window frame	aluminum
Window material	toughened glass
Fuel tank (litre)	stainless steel 240
Level indicator (fuel tank)	yes
Freshwater tank (litre)	stainless steel 350
Wheel steering	mechanical Whitlock
Emergency tiller	yes



## ACCOMMODATION

Cabins	2
Berths	6
Interior	mahogany
Floor	teak
Open cockpit	yes
Saloon	yes
Headroom saloon (m)	1,90
Heating	diesel ducted hot air Webasto
Chart table	yes
Aft Cabin	yes
Galley	yes
Countertop	wood
Sink	stainless steel
Cooker	calor gas
Oven	yes
Fridge	with freezer compartment
Hot water system	220V + engine
Water pressure system	electrical
Manual and/or foot pump	yes
Crockery	yes
Owners cabin	double bed
Bed length (m)	1,90 x 1,40
Wardrobe	hanging and drawers
Bathroom	en suite
Toilet	en suite
Toilet system	manual
Wash basin	in the bathroom
Guest cabin 1	v-bed
Wardrobe	hanging and drawers
Bathroom	en suite



Toilet	en suite
Toilet system	manual
Wash basin	in the bathroom
Shower	en suite

## MACHINERY

No of engines	1
Make	Volvo Penta
Type	2003T
HP	43,00
kW	31,61
Fuel	diesel
Year installed	1990
Engine hours	2280
Engine cooling system	freshwater heat exchanger
Drive	shaft
Engine controls	mechanical
Gearbox	mechanical
Bowthruster	electric Vetus Bowprop
Propeller type	fixed
Propeller shaft material	stainless steel
Shaft lubrication	water
Manual bilge pump	yes
Electric bilge pump	yes
Electrical installation	12V
Start battery	1x
Service battery	2x
Battery charger	NewMar 25 Ah
Shorepower	with cable

## NAVIGATION



Compass	C. plath
Depth sounder	2011 Raymarine ST60+
Log	2011 Raymarine ST60+
Windset	2011 2x Raymarine ST60+
Repeater	2011 Raymarine ST60+ Graphic
VHF	Navman VHF 7100
Autopilot	2011 Raymarine ST6002 Smart Pilot
Rudder angle indicator	On Autopilot
Plotter	2011 VDO Map7 Wi / GPS
Navtex	Lo-Kata printer
Searchlight	Hand Held

## EQUIPMENT

Fixed windscreen	yes
Sprayhood	yes
Cockpit cover	yes
Cockpit cushions	yes
Cockpit table	yes
Boarding ladder	stainless steel
Deck shower	hot and cold water
Anchor	Pool
Anchor 2	Danforth
Anchor chain	yes
Windlass	electrical
Sea railing	stainless steel
Grab rail (superstructure)	wood
Pushpit	yes
Pulpit	yes
Lifebuoy	2x
Radar reflector	yes
Fenders	yes



Mooring lines	yes
TV	yes
TV receiver	yes
Satellite	yes
Radio-cd player	yes
Speakers in salon	yes
Clock - barometer	yes
Fire extinguisher	yes

## RIGGING

Rigging	sloop
Brand mast	Seldén
Material mast	aluminum
Spreaders	2
Fully battened mainsail	yes
Stoway mast	yes
Genoa I	2000
Genoa II	1990 never used
Genoa III	1990 never used
Genoa furler	yes
Gennaker	yes
Stormjib	1990 never used
Reefing System	main in-mast furling
Backstay adjuster	mechanical
Boomvang	mechanical
Primary sheet winch	2x Enkes 28 ASC
Secondary sheet winch	1x Enkes 18
Halyard winches	2x Enkes 18 / 22
Reefing winch	1x Enkes 22 ASC
Spi-pole	aluminum



# CONTEST 38S







# CONTEST 38S





# CONTEST 38S

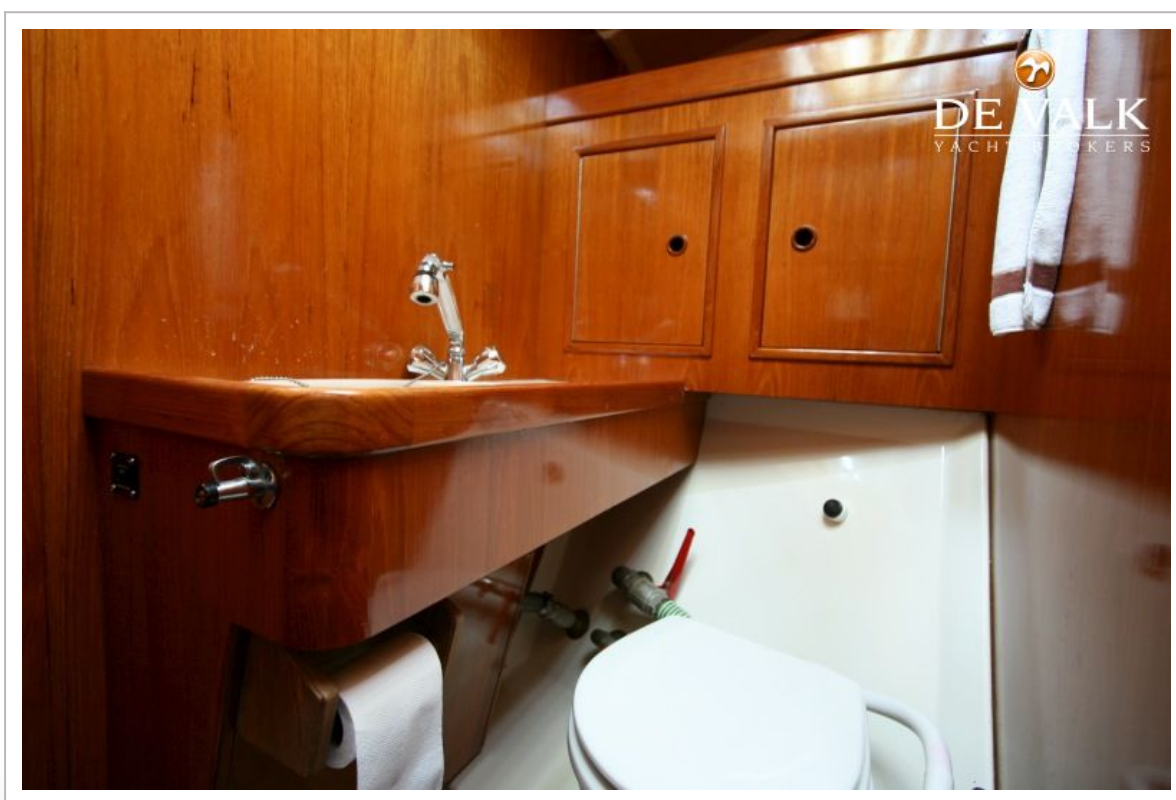
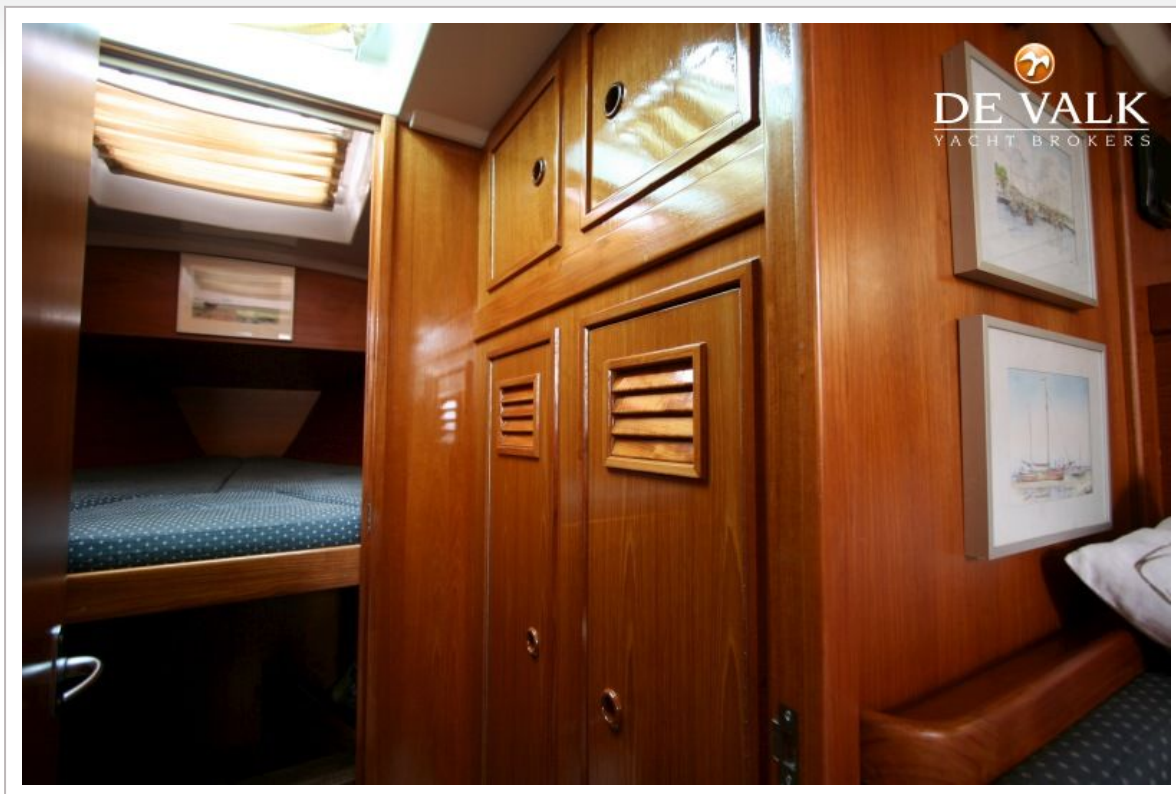


# CONTEST 38S

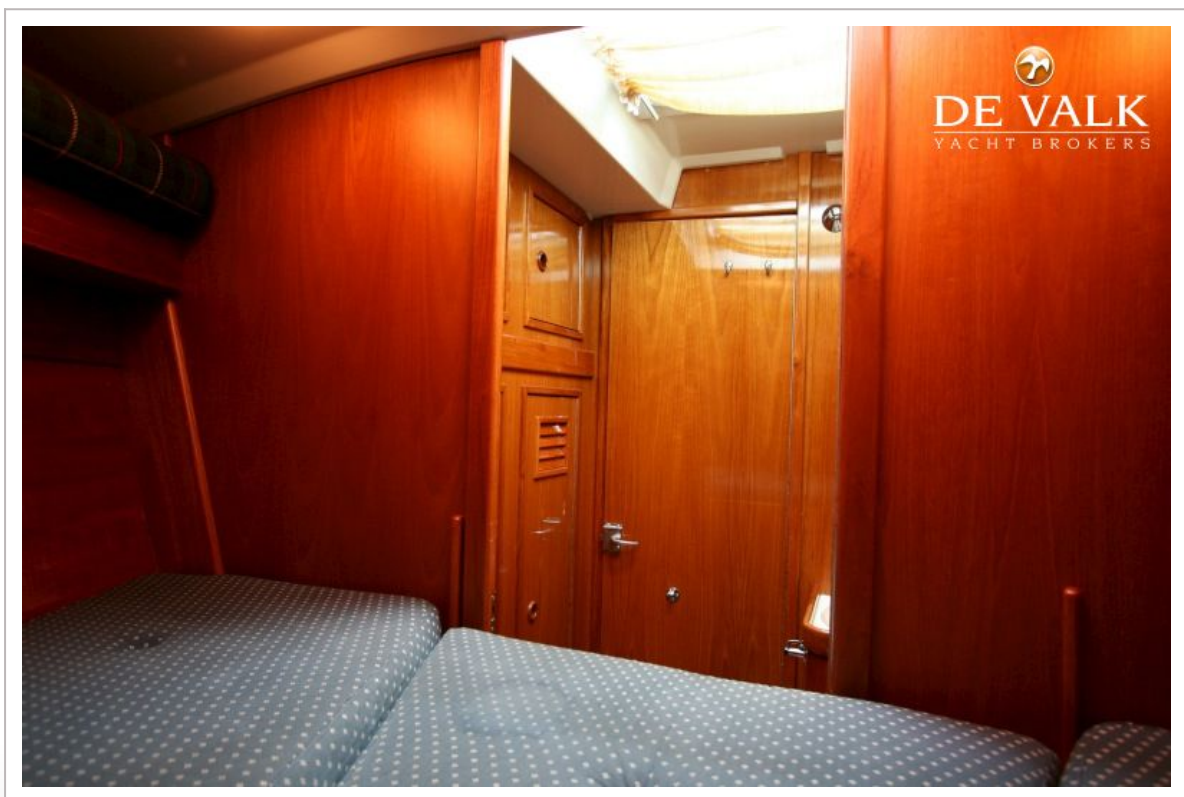
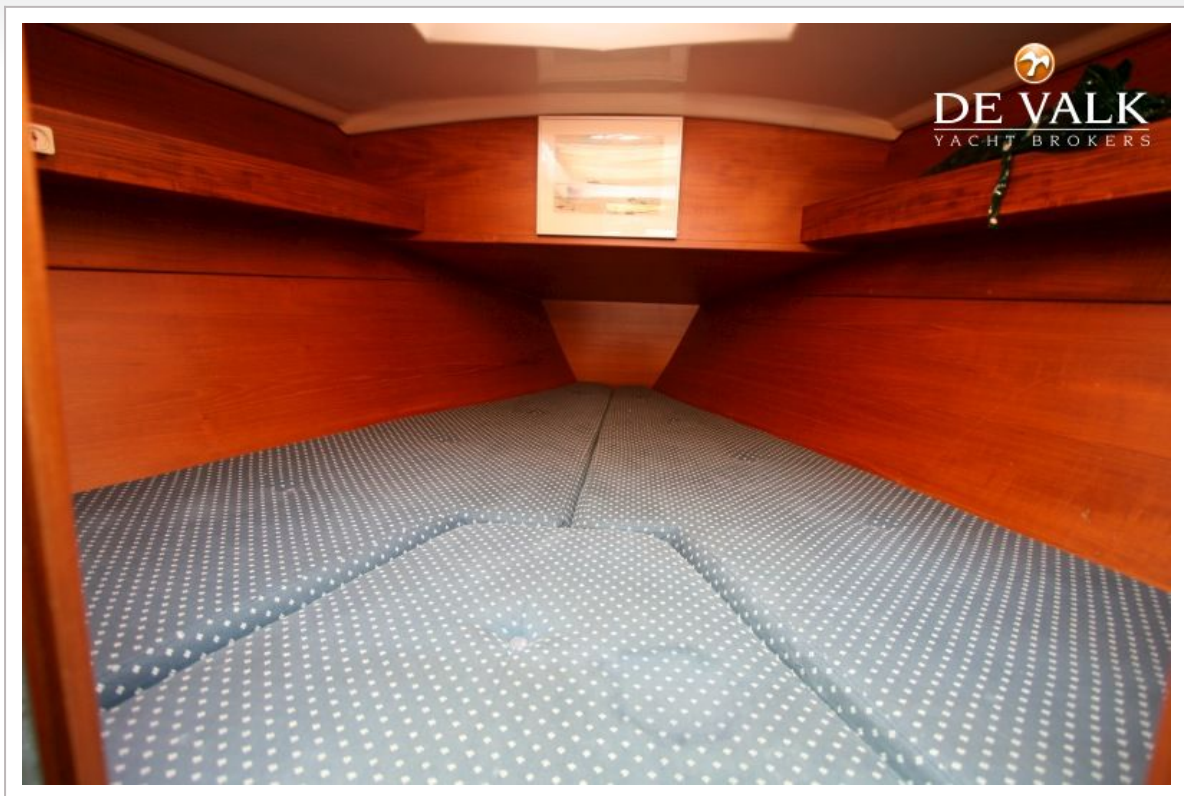




# CONTEST 38S



# CONTEST 38S

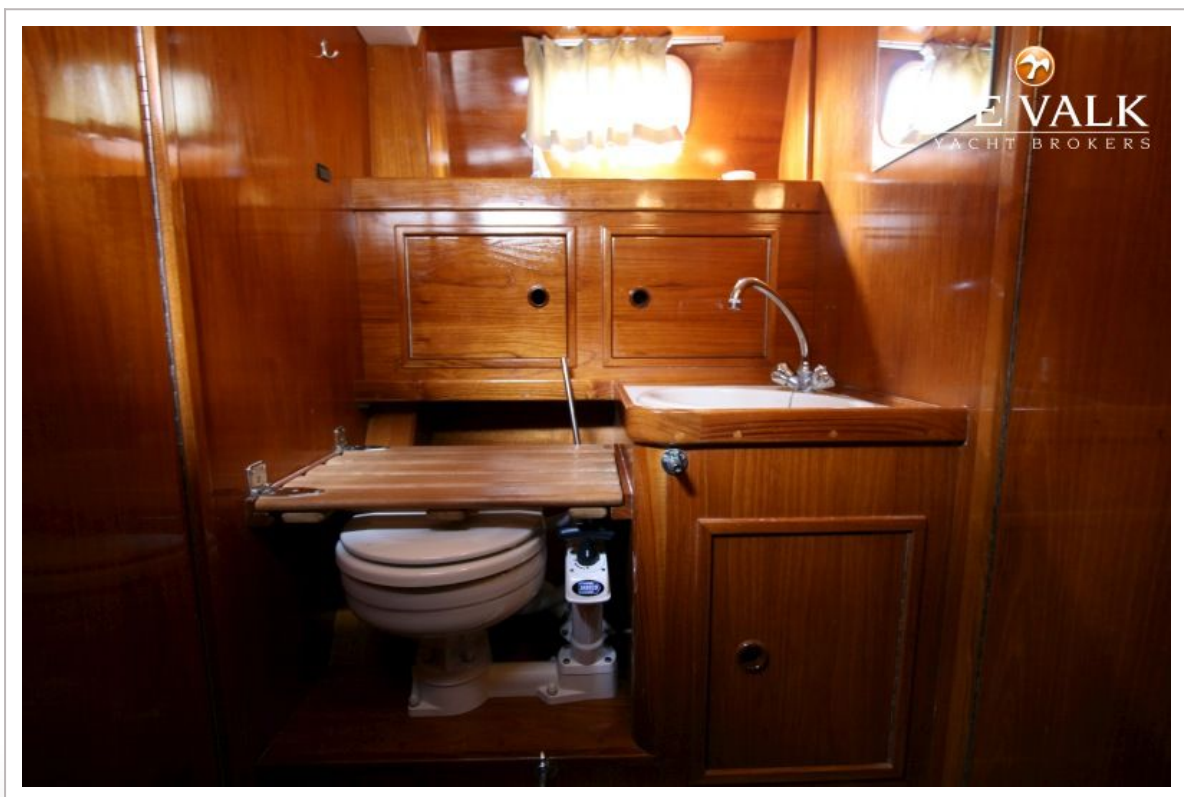
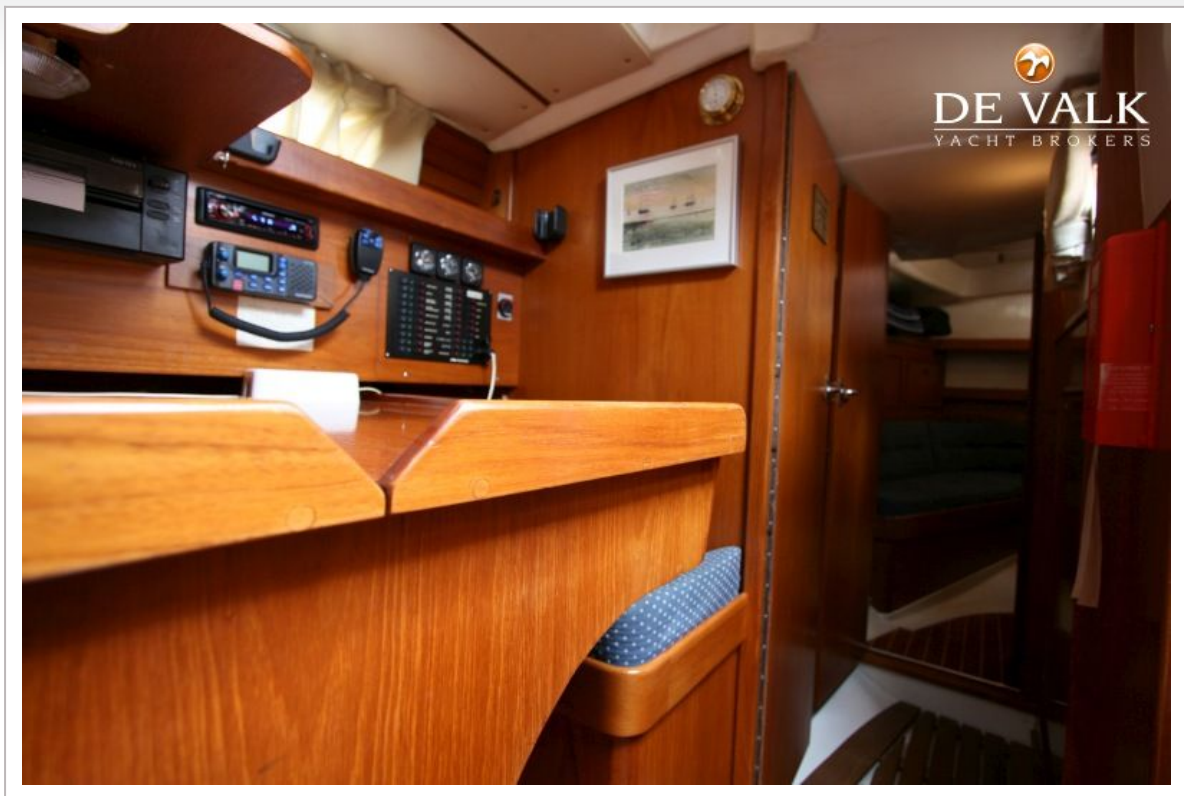




# CONTEST 38S

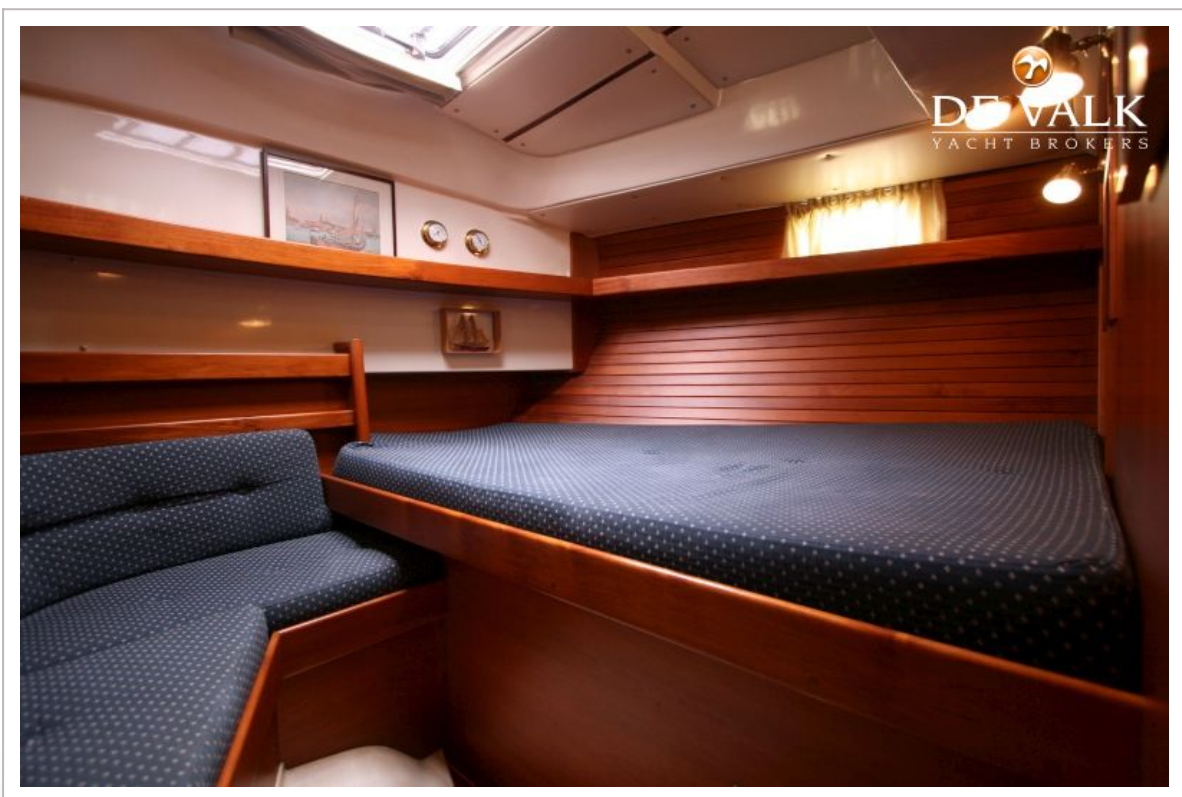
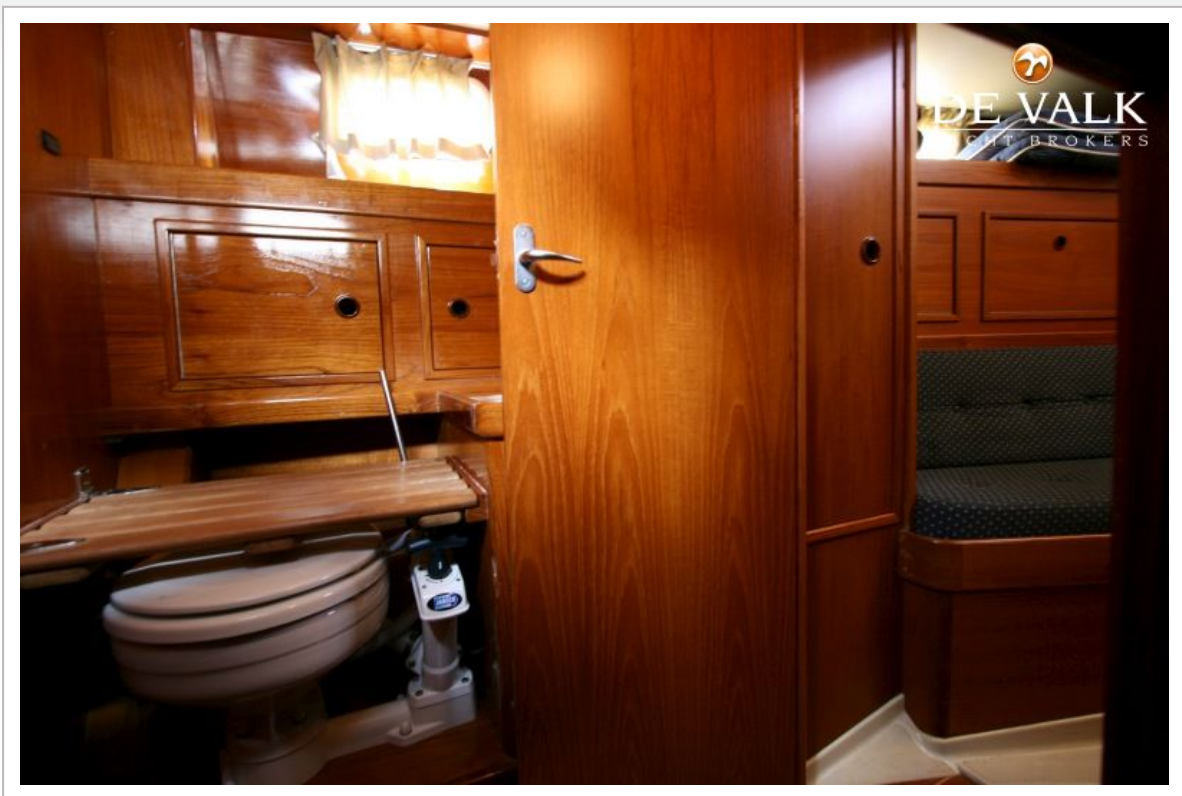


# CONTEST 38S

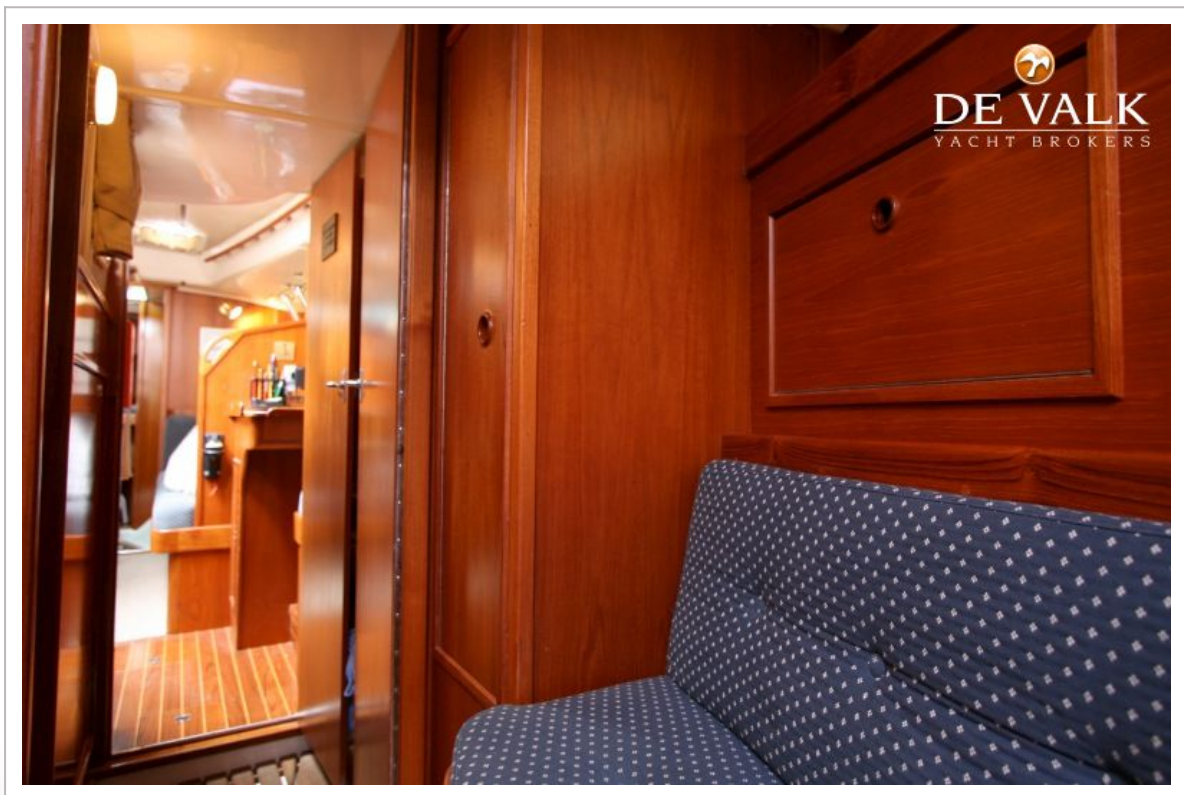
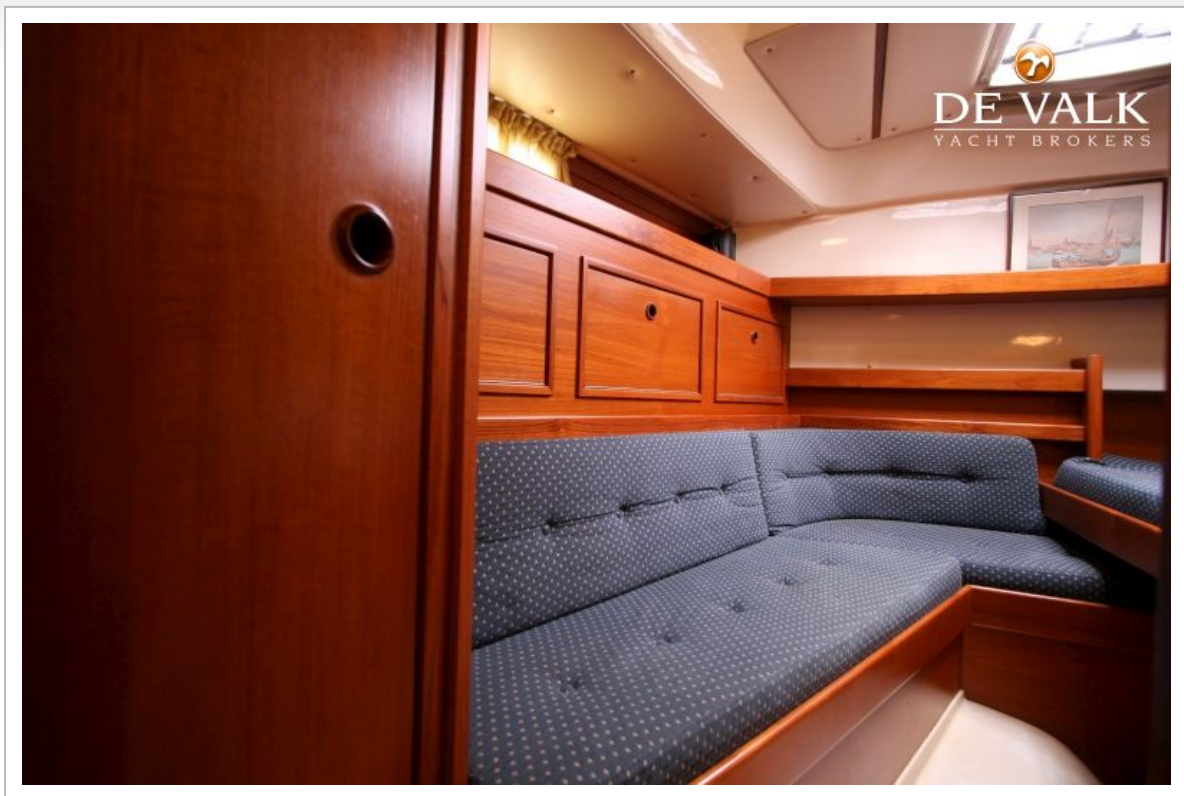




# CONTEST 38S



# CONTEST 38S





# CONTEST 38S

