



DE VALK
YACHT BROKERS



KOOPMANS 40



DE VALK
YACHT BROKERS

BROKERAGE | CHARTER | BERTHS | FINANCE | INSURANCE | YACHT MANAGEMENT

BROKER'S COMMENTS

Classic centreboard design by the famous D. Koopmans Sr. As with all his designs, they excell in seaworthiness, cruising performance and safety. This Koopmans is fully equipped for long distance cruising. Warm teak interior, with ample headroom and stowagespace throughout.

Tjerk Bouma

SPECIFICATIONS

Dimensions	12.90 x 3.55 x 1,15 / 2.20 (m)	Builder	Koopmans Sneek, Rob Frits.
Built	1999	Cabins	1
Material	Aluminium	Berths	5
Engine(s)	1 x Volvo Penta MD22L diesel	Hp/Kw	50.00 (hp), 36.75 (kw)
Asking price	sold (VAT)	Lying	contact Hindeloopen

CONTACT

Sales office	De Valk Hindeloopen B.V.	Telephone	+31 514 52 40 00
Address	Oosterstrand 1 8713 JS Hindeloopen NL	E-mail	hindeloopen@devalk.nl

DISCLAIMER

These particulars are given in good faith as supplied but cannot be guaranteed.



GENERAL

Model	KOOPMANS 40
Type	sailing yacht
LOA (m)	12,90
LWL (m)	10,00
Beam (m)	3,55
Draft (m)	2,20
Draft min (m)	1,15
Air draft (m)	19,00
Headroom (m)	2,00
Year built	1999
Launched	2000
Builder	Koopmans Sneek, Rob Frits.
Country	The Netherlands
Designer	Koopmans
Displacement (t)	9,3
Ballast (tonnes)	lead in aluminum 4,9
CE norm	A
Hull material	aluminium
Hull colour	blue
Hull shape	round-bilged
Keel type	lifting keel
Superstructure material	aluminium
Rubbing strake	aluminum
Deck finish	Treadmaster
Cockpit deck finish	teak
Antifouling (year)	2016
Dorades	yes
Window frame	aluminium
Window material	tempered glass
Deckhatch	yes



Portholes	aluminium
Insulation	foam
Fuel tank (litre)	aluminium 180
Fuel daytank (litre)	aluminium 60
Freshwater tank (litre)	aluminium 120
Wheel steering	rack & pinion Whitlock
Emergency tiller	yes

ACCOMMODATION

Cabins	1
Berths	5
Interior	mahogany
Layout	yes
Floor	wood
Open cockpit	yes
Saloon	yes
Headroom saloon (m)	2.0
Heating	stove diesel
Navigation center	yes
Chart table	yes
Galley	yes
Countertop	plastic
Sink	stainless steel
Cooker	calor gas 3 burner
Oven	Force 10
Fridge	yes
Freezer	yes
Hot water system	220V + engine Boiler 2010
Water pressure system	electrical
Manual and/or foot pump	yes
Crockery	yes



Owners cabin	v-bed Front
Bed length (m)	2,20
Wardrobe	hanging/drawers/shelves
Bathroom	shared
Toilet	shared
Toilet system	manual
Wash basin	at the toilet
Shower	shared
Guest cabin 1	single bed Rear
Bed length (m)	2.20
Wardrobe	shelves
Bathroom	shared
Toilet	shared
Toilet system	manual
Wash basin	at the toilet
Shower	shared

MACHINERY

No of engines	1
Make	Volvo Penta
Type	MD22L
HP	50,00
kW	36,75
Fuel	diesel
Year installed	2000
Maximum speed (kn)	7
Cruising speed (kn)	6
Consumption (l/hr)	3
Range (nm)	450
Engine cooling system	freshwater heat exchanger
Drive	shaft



Engine controls	bowden cable
Gearbox	mechanical
Thrust bearing	yes
Propeller type	folding
Propeller shaft material	stainless steel
Shaft lubrication	water
Manual bilge pump	yes
Electric bilge pump	yes
Bilge alarm	yes
Electrical installation	yes
Batteries	yes
Start battery	1x 2013
Service battery	2x Lithium 2013
Battery monitor	yes
Battery charger	yes
Diode battery combiners	yes
Shorepower	with cable
Insulation transformer	yes

NAVIGATION

Compass	Whitlock
Depth sounder	Simrad
Depth sounder/log	Simrad
Log	Simrad
Windset	Simrad
Repeater	Simrad
VHF	Sailor VHF
Autopilot	Robertson AP20
Wind vane steering install.	yes
Radar	Furuno
GPS	Furuno



Weather receiver	yes
Navtex	NAV 4 Navtex
Electronis chart(s)	yes
Radio receiver	yes
EPIRB	yes
Navigation lights	yes

EQUIPMENT

Fixed windscreen	yes
Fixed hardtop	yes
Sun awning	yes
Winter cover	yes
Cockpit table	yes
Bathing platform	yes
Boarding ladder	stainless steel
Bow ladder	yes
Anchor	Bruce
Anchor chain	yes
Windlass	electrical Lewmar
Sea railing	wire
Grab rail (superstructure)	yes
Railing side opening gates	yes
Pushpit	yes
Pulpit	yes
Radar reflector	yes
Fenders	yes
Mooring lines	yes
Spare parts	yes
Radio-cd player	yes
iPod connection	yes
Speakers in salon	yes



Clock - barometer	yes
Fire extinguisher	yes
Extra info	Extensive refit 2011

RIGGING

Rigging	sloop-cutter
Standing rigging	wire
Brand mast	Seldén
Material mast	aluminium
Spreaders	yes
Mainsail	2013 Hagoort Sails
Mainsail cover	yes
Fully battened mainsail	yes
Cutterstay	yes
Jib	2013 Hagoort Sails
Genoa furler	yes
Cutter furler	yes
Yankee	2013 Hagoort Sails
Reefing System	quick-one-line-reefing
Backstay adjuster	tackle
Boomvang	tackle
Primary sheet winch	yes
Secondary sheet winch	yes
Halyard winches	yes
Spi-pole	aluminium



KOOPMANS 40







KOOPMANS 40





KOOPMANS 40



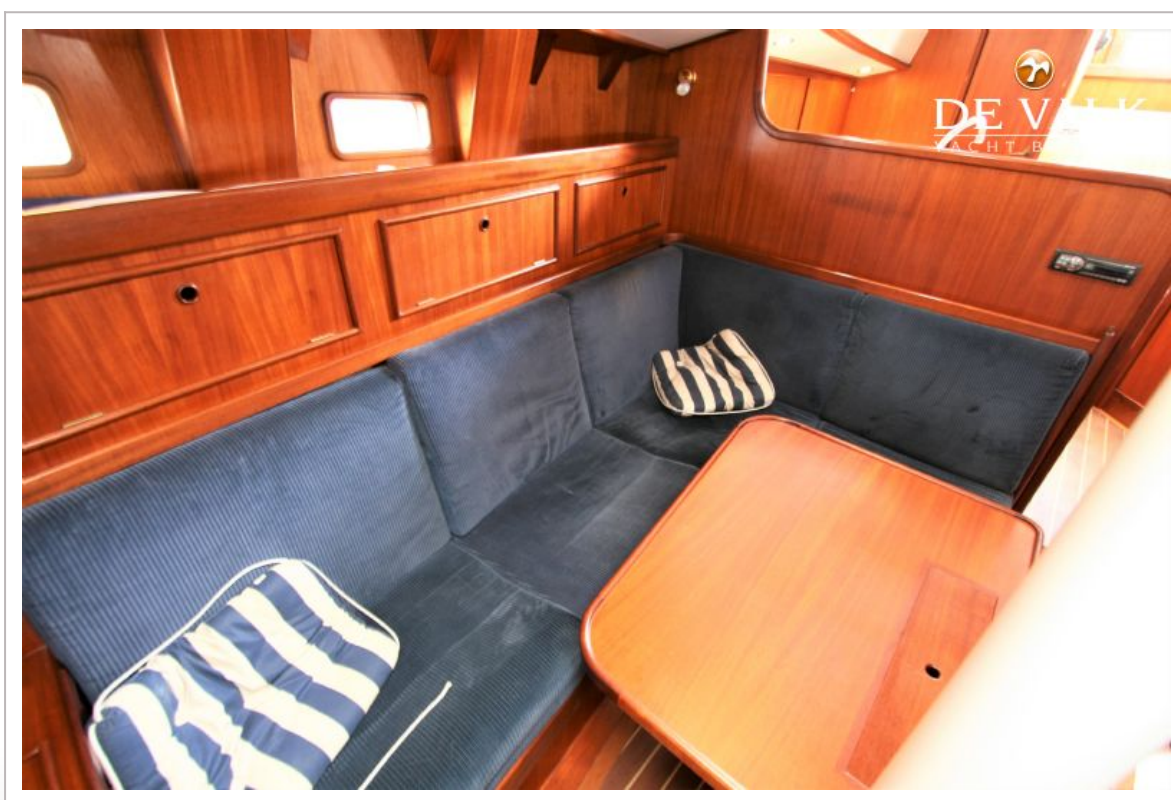
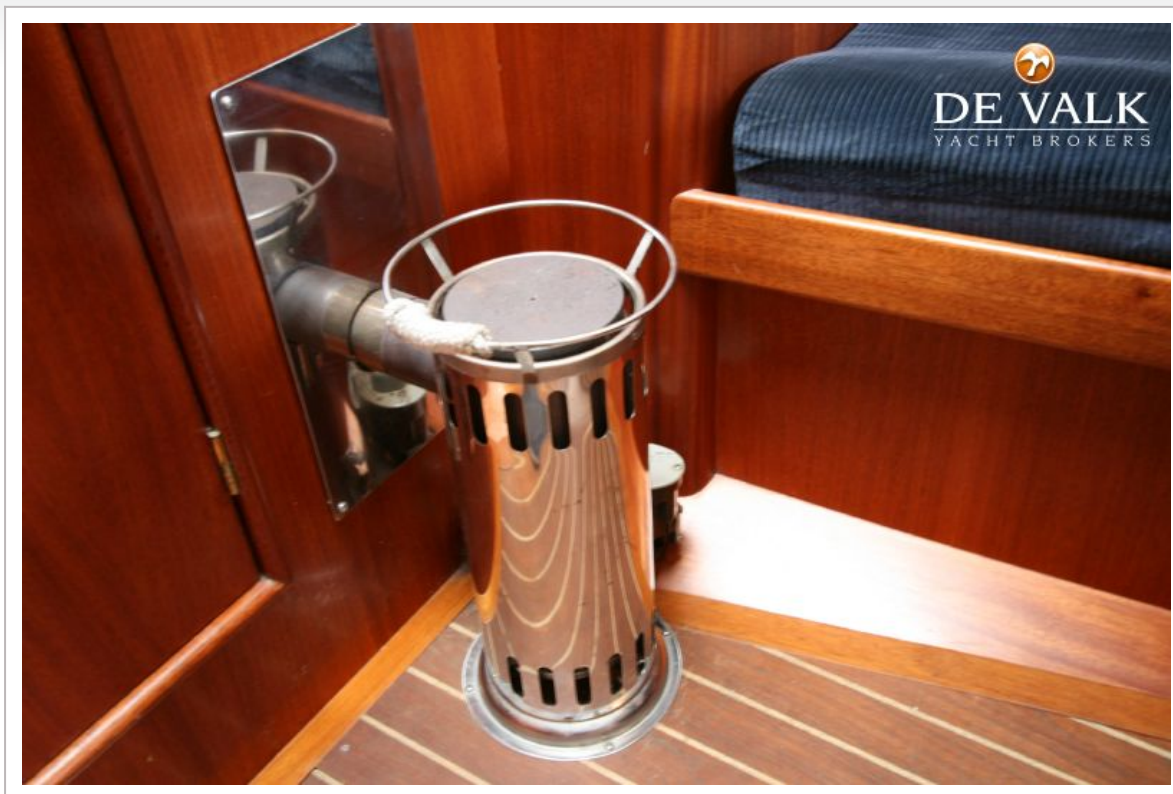
KOOPMANS 40



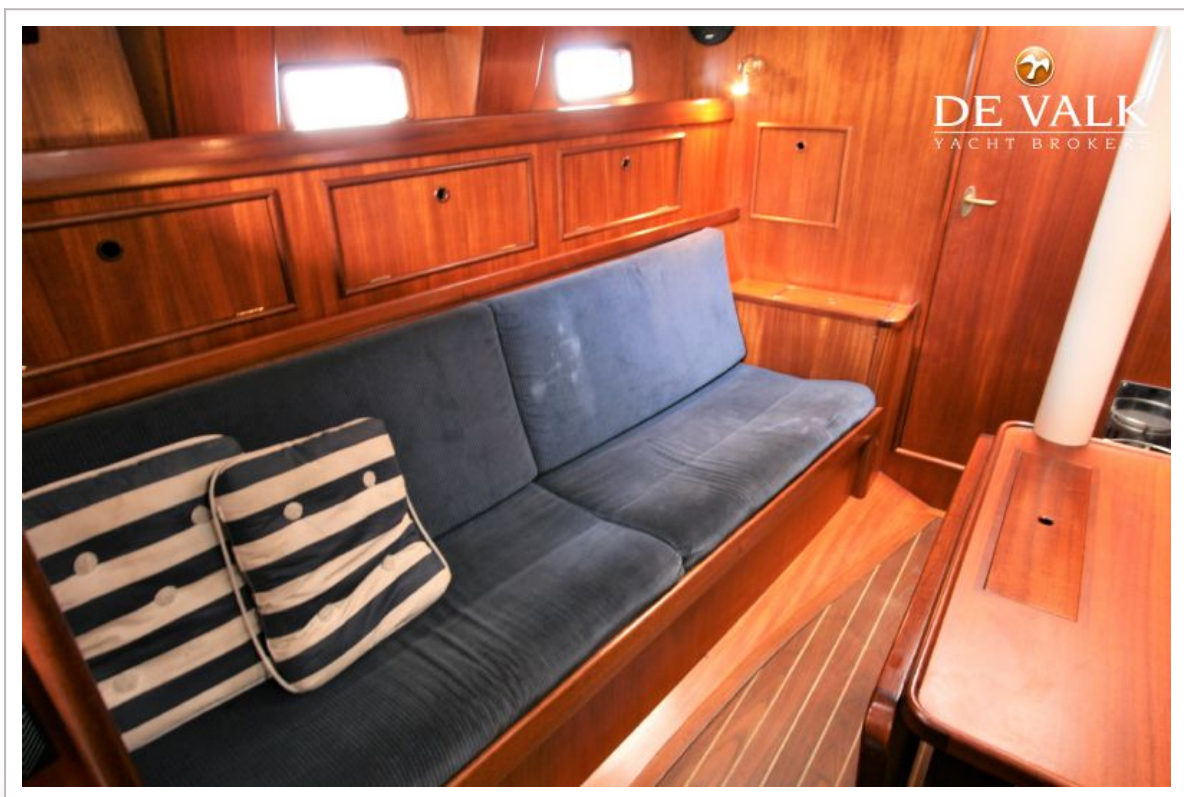
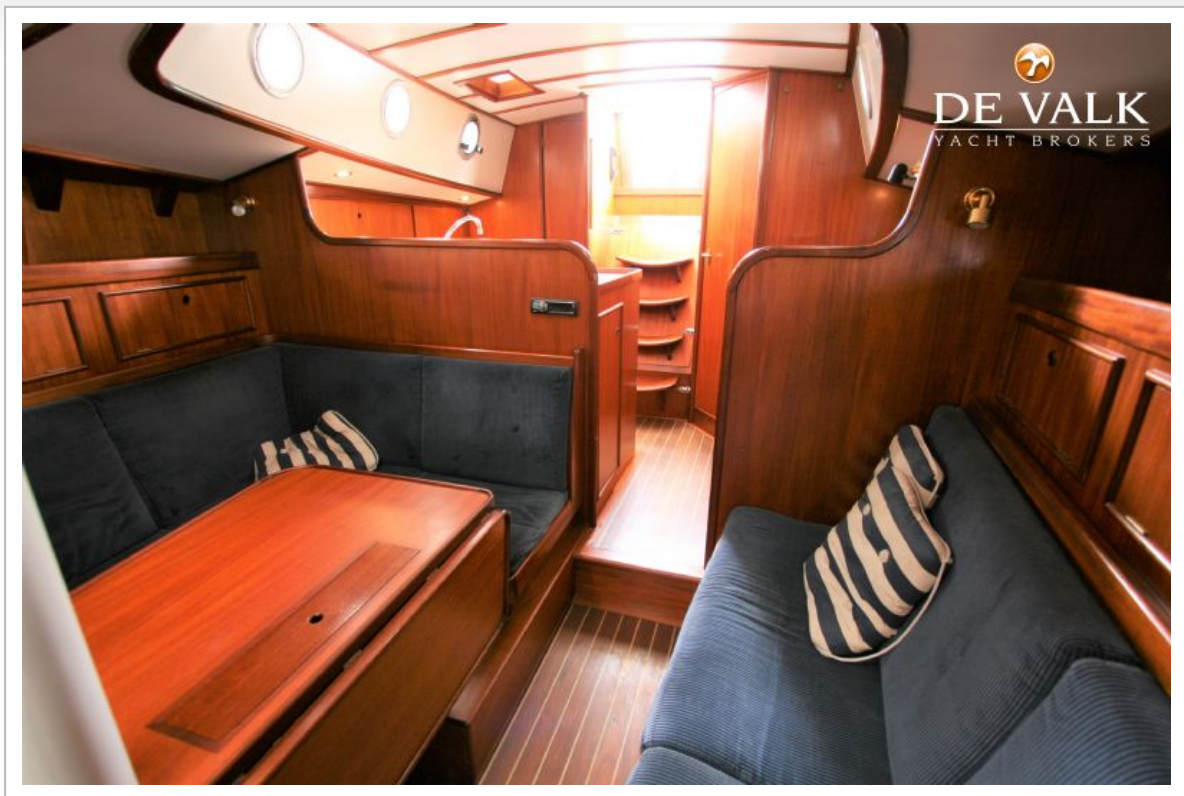
KOOPMANS 40



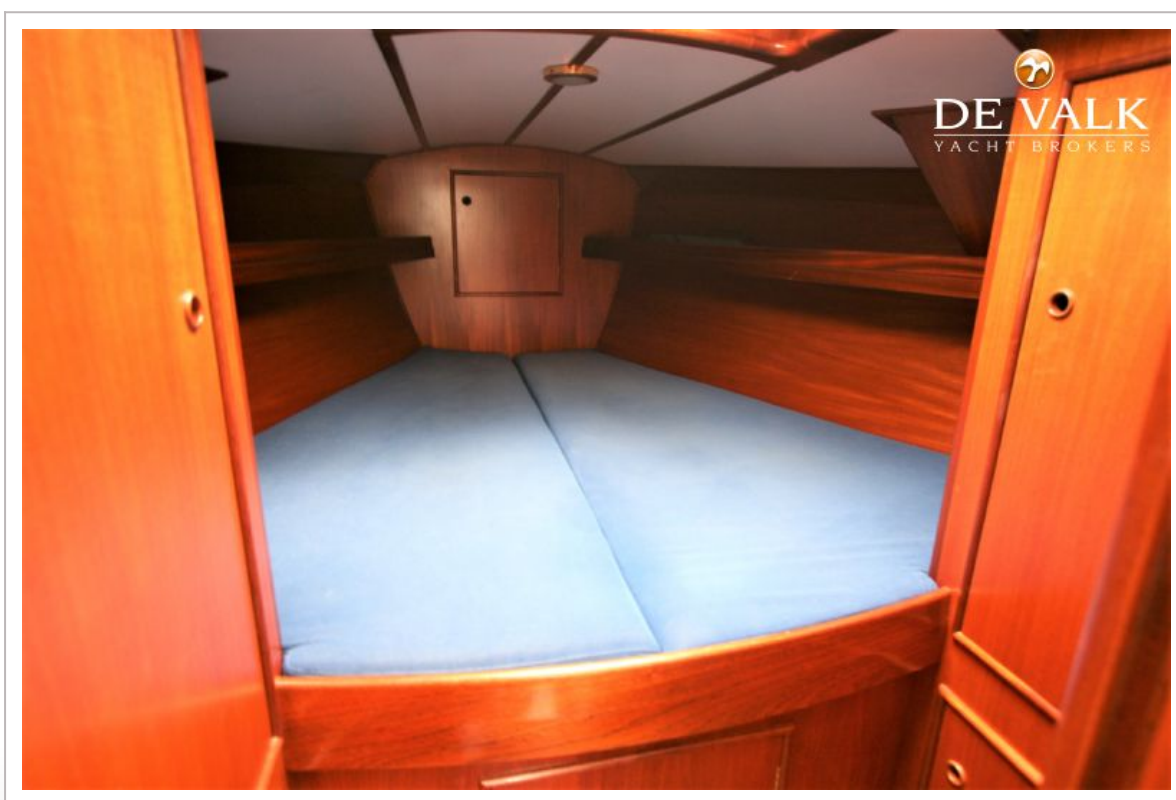
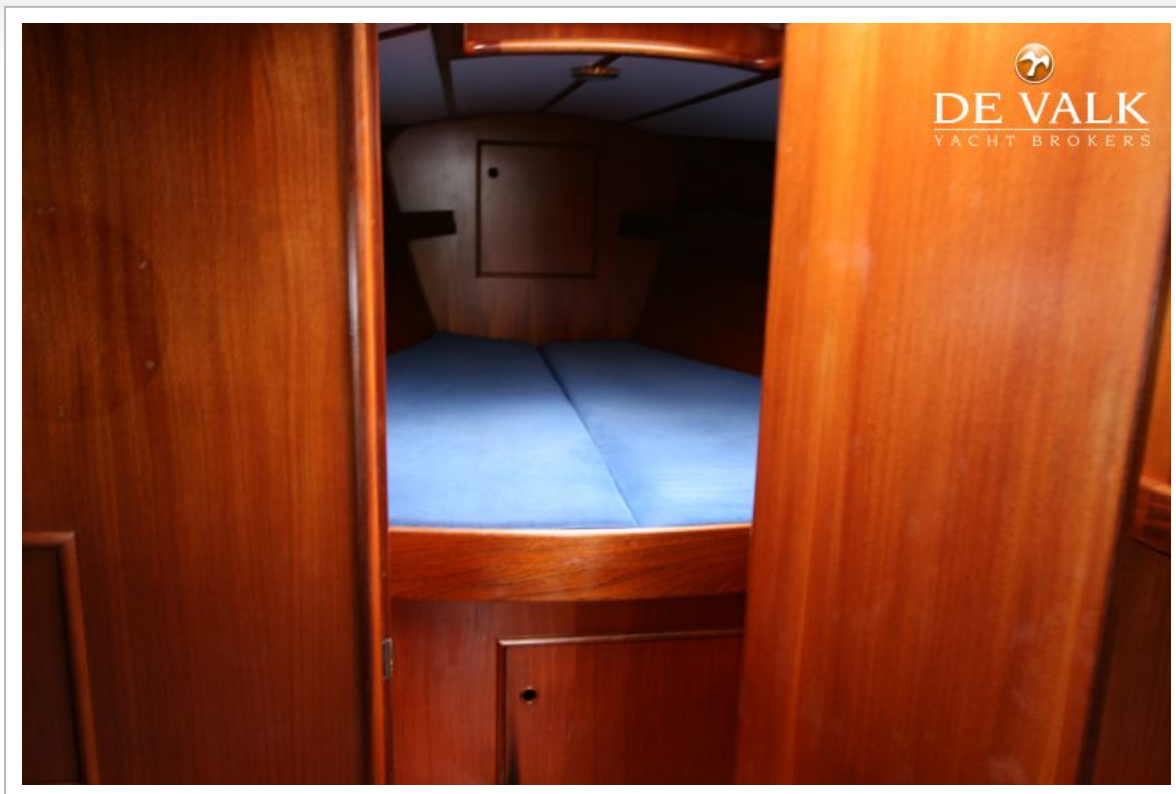
KOOPMANS 40



KOOPMANS 40



KOOPMANS 40



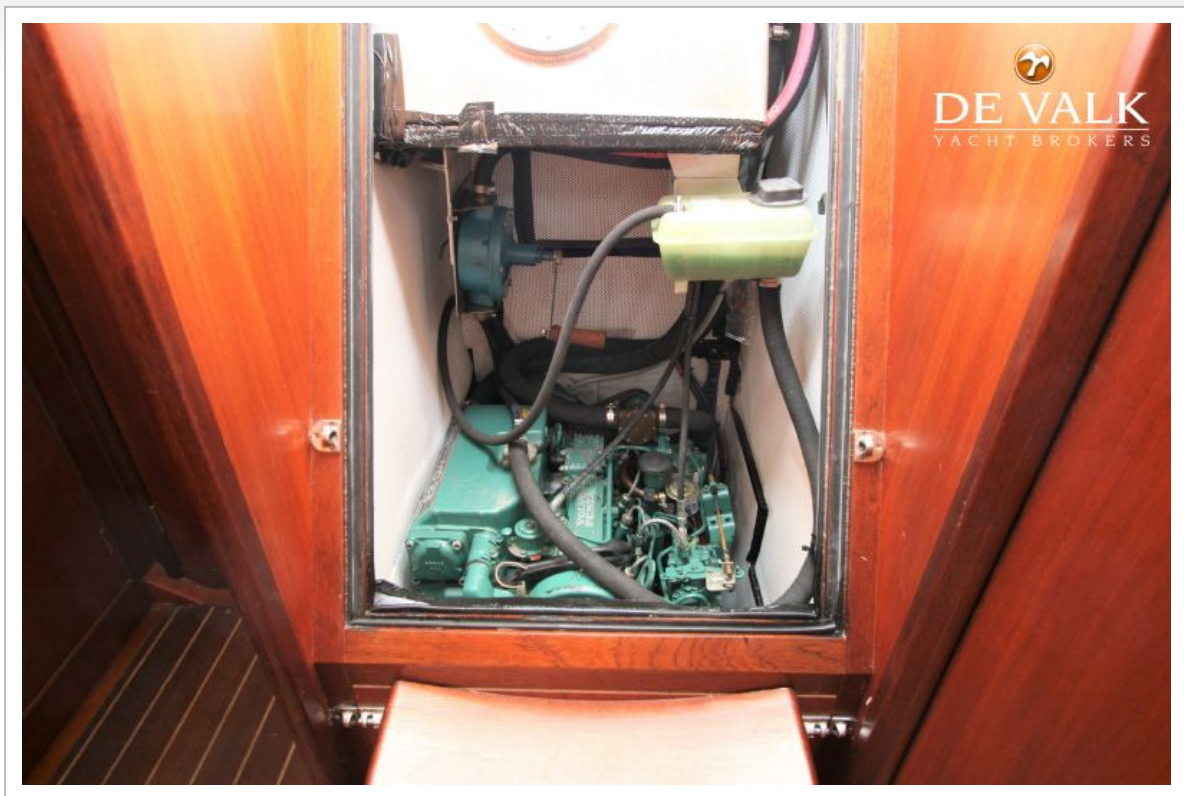
KOOPMANS 40



KOOPMANS 40



KOOPMANS 40



KOOPMANS 40



