



## BAVARIA 50 CRUISER



# BAVARIA 50 CRUISER

## BROKER'S COMMENTS

This Bavaria 50 has more to offer than just space. The finishing is nicer, better and has more quality throughout also due to her German Lloyds specifications. This 5 cabin Bavaria 50 cruiser offers much for a large family or a big crew of friends. Her interior woodwork is nice and warm and with new upholstery and new mattresses very inviting and ready to go anywhere.

*Johan Nooitgedagt*

## SPECIFICATIONS

<b>Dimensions</b>	14.99 x 4.49 x 1,85 / 1.85 (m)	<b>Builder</b>	Bavaria
<b>Built</b>	2006	<b>Cabins</b>	5
<b>Material</b>	GRP	<b>Berths</b>	12
<b>Engine(s)</b>	1 x Volvo Penta D2-75a diesel	<b>Hp/Kw</b>	72.00 (hp), 52.92 (kw)
<b>Asking price</b>	sold (VAT )	<b>Lying</b>	contact Hindeloopen

## CONTACT

<b>Sales office</b>	De Valk Hindeloopen B.V.	<b>Telephone</b>	+31 514 52 40 00
<b>Address</b>	Oosterstrand 1 8713 JS Hindeloopen NL	<b>E-mail</b>	hindeloopen@devalk.nl

## DISCLAIMER

These particulars are given in good faith as supplied but cannot be guaranteed.



# BAVARIA 50 CRUISER

## GENERAL

Model	BAVARIA 50 CRUISER
Type	sailing yacht
LOA (m)	14,99
Beam (m)	4,49
Draft (m)	1,85
Draft min (m)	1,85
Air draft (m)	18,00
Headroom (m)	2,05
Year built	2006
Builder	Bavaria
Country	Germany
Displacement (t)	12,6
CE norm	yes
Hull material	GRP
Hull colour	white
Hull shape	round-bilged
Superstructure material	GRP
Deck material	GRP
Deck finish	anti-slip moulded in
Superstructure deck finish	anti-slip moulded in
Cockpit deck finish	teak
Antifouling (year)	2015
Dorades	yes
Deckhatch	yes
Portholes	yes
Fuel tank (litre)	yes
Level indicator (fuel tank)	yes
Freshwater tank (litre)	yes
Level indicator (freshwater)	yes
Greywater tank (litre)	yes



# BAVARIA 50 CRUISER

Level indicator (greywater)	yes
Wheel steering	mechanical
Emergency tiller	yes

## ACCOMMODATION

Cabins	5
Berths	12
Interior	mahogany
Floor	teak and holly
Open cockpit	yes
Headroom saloon (m)	2,10
Heating	diesel ducted hot air Webasto
Navigation center	yes
Chart table	yes
Galley	yes
Countertop	corian
Sink	stainless steel
Cooker	yes
Oven	yes
Fridge	with freezer compartment
Freezer	yes
Hot water system	220V + engine
Water pressure system	electrical
Owners cabin	v-bed
Bed length (m)	2,10
Wardrobe	hanging/drawers/shelves
Bathroom	en suite
Toilet	en suite
Toilet system	manual
Wash basin	at the toilet
Shower	en suite



# BAVARIA 50 CRUISER

Guest cabin 1	double bed
Bed length (m)	2,10
Wardrobe	hanging and drawers
Bathroom	shared
Toilet	shared
Toilet system	manual
Wash basin	at the toilet
Shower	shared
Guest cabin 2	double bed
Bed length (m)	2,10
Wardrobe	hanging and drawers
Bathroom	shared
Toilet	shared
Toilet system	manual
Wash basin	at the toilet
Shower	shared
Guest cabin 3	bunk bed
Bed length (m)	2,00
Wardrobe	hanging and drawers
Guest cabin 4	bunk bed
Bed length (m)	2,00
Wardrobe	hanging and drawers

## MACHINERY

No of engines	1
Make	Volvo Penta
Type	D2-75a
HP	72,00
kW	52,92
Fuel	diesel
Year installed	2006



# BAVARIA 50 CRUISER

Maximum speed (kn)	7
Cruising speed (kn)	6
Consumption (l/hr)	4
Engine hours	2800
Engine cooling system	freshwater heat exchanger
Drive	sail-drive
Engine controls	mechanical
Gearbox	mechanical
Bowthruster	electric
Propeller type	fixed
Propeller blades	3
Manual bilge pump	yes
Electric bilge pump	yes
Batteries	yes
Start battery	yes
Service battery	yes
Battery monitor	yes
Battery charger	yes
Battery charger/inverter	yes
Shorepower	with cable

## NAVIGATION

Compass	yes
Depth sounder	yes
Log	yes
Windset	yes
Repeater	yes
Autopilot	yes
Plotter	yes
Radio receiver	yes



## EQUIPMENT

Sprayhood	2015
Sprayhood with grab rail	yes
Bimini	yes
Cockpit cushions	yes
Cockpit table	yes
Bathing platform	yes
Boarding ladder	stainless steel
Deck shower	yes
Anchor	CQR Plough
Anchor chain	yes
Windlass	electrical
Dinghy	inflatable
Outboard	yes
Outboard support	yes
Sea railing	wire
Grab rail (superstructure)	yes
Railing side opening gates	yes
Lifejackets	yes
Radar reflector	yes
Fenders	yes
Mooring lines	yes
Speakers in salon	yes
Fire extinguisher	yes

## RIGGING

Rigging	sloop
Standing rigging	wire
Brand mast	Seldén
Material mast	aluminium
Spreaders	yes



# BAVARIA 50 CRUISER

<b>Mainsail</b>	yes
<b>Stoway mast</b>	yes
<b>Genoa</b>	yes
<b>Genoa furler</b>	yes
<b>Reefing System</b>	main in-mast furling
<b>Backstay adjuster</b>	mechanical
<b>Boomvang</b>	mechanical
<b>Secondary sheet winch</b>	yes
<b>Genoa sheetwinches</b>	yes
<b>Multifunctional winches</b>	halyard/sheet winches
<b>Isolated backstay</b>	yes





# BAVARIA 50 CRUISER



# BAVARIA 50 CRUISER





# BAVARIA 50 CRUISER



# BAVARIA 50 CRUISER





# BAVARIA 50 CRUISER



# BAVARIA 50 CRUISER





# BAVARIA 50 CRUISER



# BAVARIA 50 CRUISER





# BAVARIA 50 CRUISER



# BAVARIA 50 CRUISER





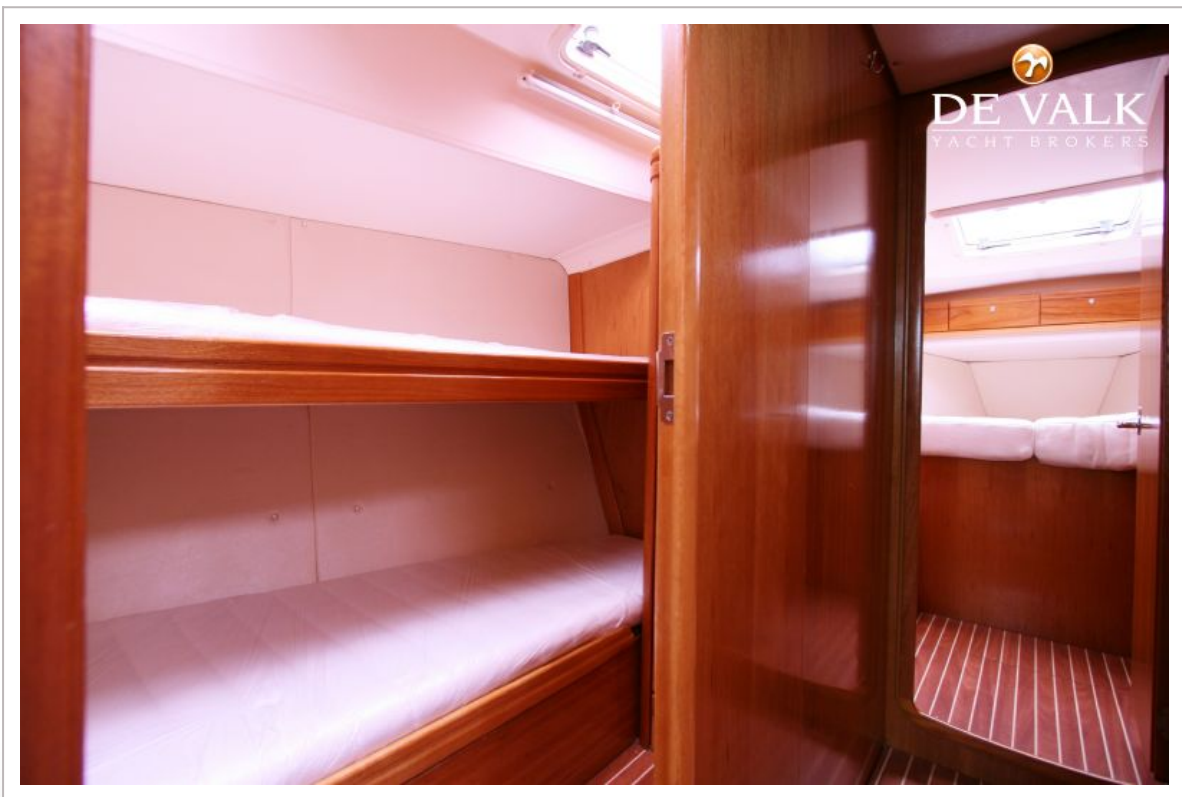
# BAVARIA 50 CRUISER



# BAVARIA 50 CRUISER

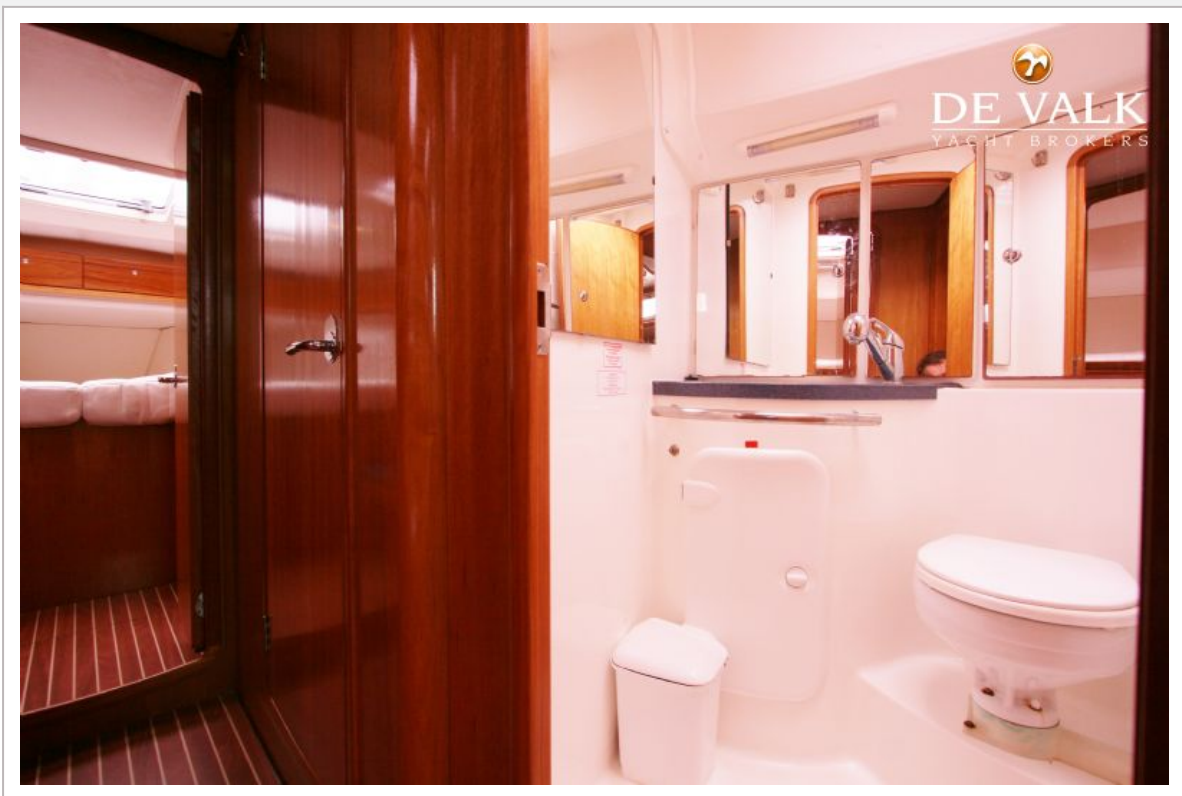


# BAVARIA 50 CRUISER





# BAVARIA 50 CRUISER



# BAVARIA 50 CRUISER

