



DE VALK  
YACHT BROKERS



## BENETEAU OCEANIS 321



DE VALK  
YACHT BROKERS

# BENETEAU OCEANIS 321

## BROKER'S COMMENTS

The Oceanis 321 is a fast, comfortable cruising yacht with good looks, ideal for the young family who want to extend their cruising possibilities. Good accommodations with four fixed berths. She has a large cockpit for safe sailing and harbor activities. Cherry treated mahogany interior, saloon with U-shaped settee on starboard side and straight settee on port side, front and aft cabin, 4(+2) berths.

*Johan Schootstra*

## SPECIFICATIONS

<b>Dimensions</b>	9.95 x 3.42 x 1.30 (m)	<b>Builder</b>	Beneteau
<b>Built</b>	1996	<b>Cabins</b>	2
<b>Material</b>	GRP	<b>Berths</b>	6
<b>Engine(s)</b>	1 x Volvo Penta MD2010B diesel	<b>Hp/Kw</b>	19.00 (hp), 13.97 (kw)
<b>Asking price</b>	sold (VAT )	<b>Lying</b>	contact Hindeloopen

## CONTACT

<b>Sales office</b>	De Valk Hindeloopen	<b>Telephone</b>	+31 514 52 40 00
<b>Address</b>	Oosterstrand 1 8713 JS Hindeloopen The Netherlands	<b>E-mail</b>	hindeloopen@devalk.nl

## DISCLAIMER

These particulars are given in good faith as supplied but cannot be guaranteed.



# BENETEAU OCEANIS 321

## GENERAL

<b>Model</b>	BENETEAU OCEANIS 321
<b>Type</b>	sailing yacht
<b>LOA (m)</b>	9,95
<b>LWL (m)</b>	9,05
<b>Beam (m)</b>	3,42
<b>Draft (m)</b>	1,30
<b>Air draft (m)</b>	14,20
<b>Headroom (m)</b>	1,85
<b>Year built</b>	1996
<b>Builder</b>	Beneteau
<b>Country</b>	France
<b>Designer</b>	Groupe Finot
<b>Displacement (t)</b>	4,4
<b>Ballast (tonnes)</b>	1,36
<b>CE norm</b>	A
<b>Hull material</b>	GRP
<b>Hull colour</b>	white
<b>Hull shape</b>	round-bilged
<b>Keel type</b>	fin keel with bulb
<b>Superstructure material</b>	GRP
<b>Deck material</b>	GRP
<b>Deck finish</b>	non-skid moulded in
<b>Superstructure deck finish</b>	non-skid moulded in
<b>Cockpit deck finish</b>	teak
<b>Antifouling (year)</b>	2016
<b>Window frame</b>	aluminium
<b>Window material</b>	perspex
<b>Deckhatch</b>	2x - Lewmar
<b>Fuel tank (litre)</b>	stainless steel 60
<b>Level indicator (fuel tank)</b>	Pijlstas



Freshwater tank (litre)	GRP 190
Wheel steering	mechanical

## ACCOMMODATION

Cabins	2
Berths	6
Interior	mahogany
Open cockpit	yes
Saloon	yes
Headroom saloon (m)	1,85
Sliding roof	manual
Heating	diesel ducted hot air Webasto
Chart table	yes
Aft Cabin	yes
Galley	yes
Countertop	Duropal
Sink	stainless steel Double
Cooker	calor gas Eno - 2 burner
Oven	In cooker
Fridge	yes
Freezer	In fridge
Hot water system	220V Boiler - Quick B3 - 15L
Water pressure system	electrical
Owners cabin	double bed
Bed length (m)	2
Wardrobe	hanging and shelves
Bathroom	shared
Toilet	
Toilet system	manual JABSCO
Wash basin	yes
Shower	yes



Guest cabin 1	v-bed
Bed length (m)	1,90
Wardrobe	shelves

## MACHINERY

No of engines	1
Make	Volvo Penta
Type	MD2010B
HP	19,00
kW	13,97
Fuel	diesel
Year installed	1996
Maximum speed (kn)	6,5
Cruising speed (kn)	5,5
Consumption (l/hr)	2
Engine hours	Defect
Engine cooling system	freshwater heat exchanger
Drive	shaft
Engine controls	bowden cable
Gearbox	mechanical
Exhaust	watercooled
Propeller type	fixed
Propeller blades	3
Propeller shaft material	stainless steel
Manual bilge pump	yes
Electric bilge pump	yes
Electrical installation	12 /220 V
Start battery	70 Amp
Service battery	105 Amp
Battery charger	VICTRON
Shorepower	with cable



## NAVIGATION

Compass	Plastimo Olympic
Depth sounder	Data from: Autohelm Tridata
Log	Data from: Autohelm Tridata
Windset	Autohelm Wind
VHF	Shipmate RS8300
Autopilot	Autohelm ST4000
GPS	Garmin GPS 152
Navigation lights	yes

## EQUIPMENT

Sprayhood	yes
Cockpit cover	yes
Cockpit table	yes
Bathing platform	yes
Boarding ladder	stainless steel
Anchor	CQR Plough
Anchor chain	20m 8mm
Anchor 2	Fortress 15kg
Windlass	manual
Sea railing	stainless steel Double wired
Pushpit	yes
Pulpit	yes
Fenders	yes
Mooring lines	yes
TV	yes
TV receiver	yes
Radio-cd player	yes
DVD player	yes
Speakers in salon	yes
Clock - barometer	yes



## RIGGING

Rigging	sloop
Standing rigging	wire
Brand mast	Sparcraft
Material mast	aluminium
Spreaders	One pair
Mainsail	Zwaan - Stavoren - 2003
Stoway mast	yes
High aspect	2010 Zwaan Stavoren 26m2
Genoa	Zwaan - Stavoren - 2003
Genoa furler	yes
Gennaker	Zwaan - Stavoren - 2013
Reefing System	main in-mast furling
Boomvang	gasspring
Genoa sheetwinches	2x 40 Lewmar
Halyard winches	1x 16 Lewmar



# BENETEAU OCEANIS 321





# BENETEAU OCEANIS 321



# BENETEAU OCEANIS 321



# BENETEAU OCEANIS 321



# BENETEAU OCEANIS 321



# BENETEAU OCEANIS 321



# BENETEAU OCEANIS 321



# BENETEAU OCEANIS 321



# BENETEAU OCEANIS 321





# BENETEAU OCEANIS 321



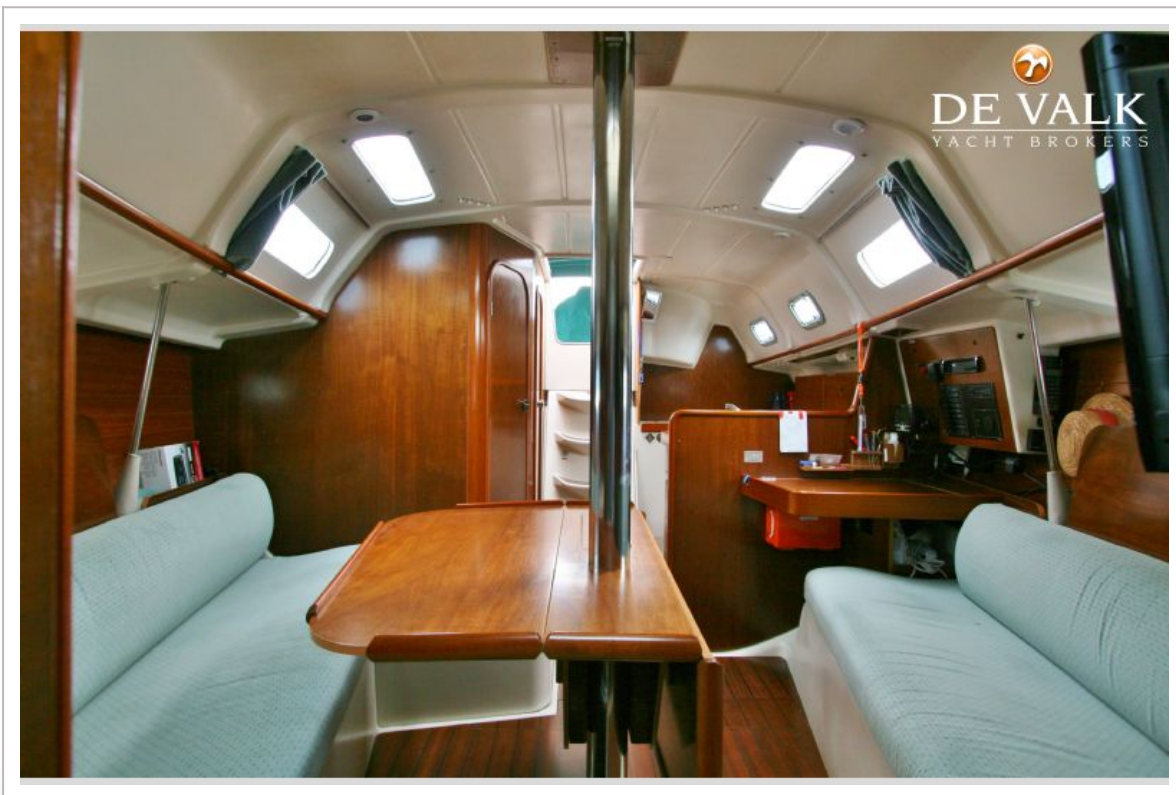
# BENETEAU OCEANIS 321



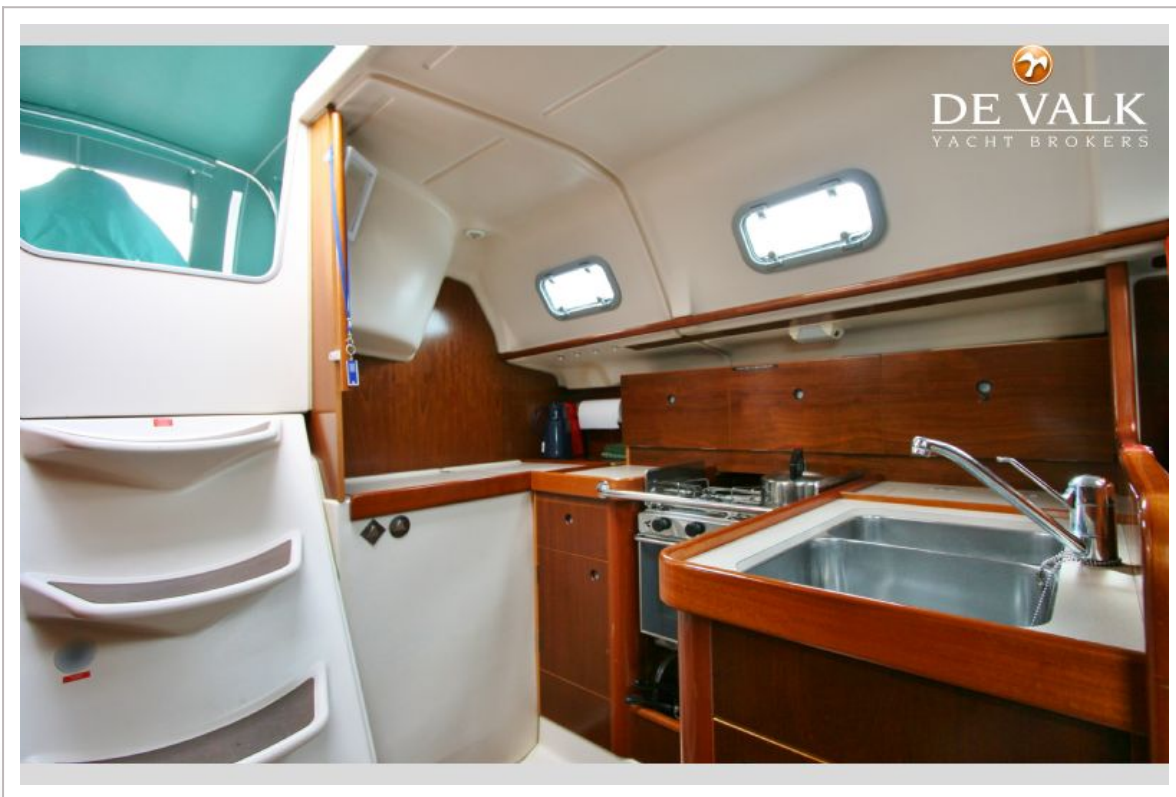
# BENETEAU OCEANIS 321



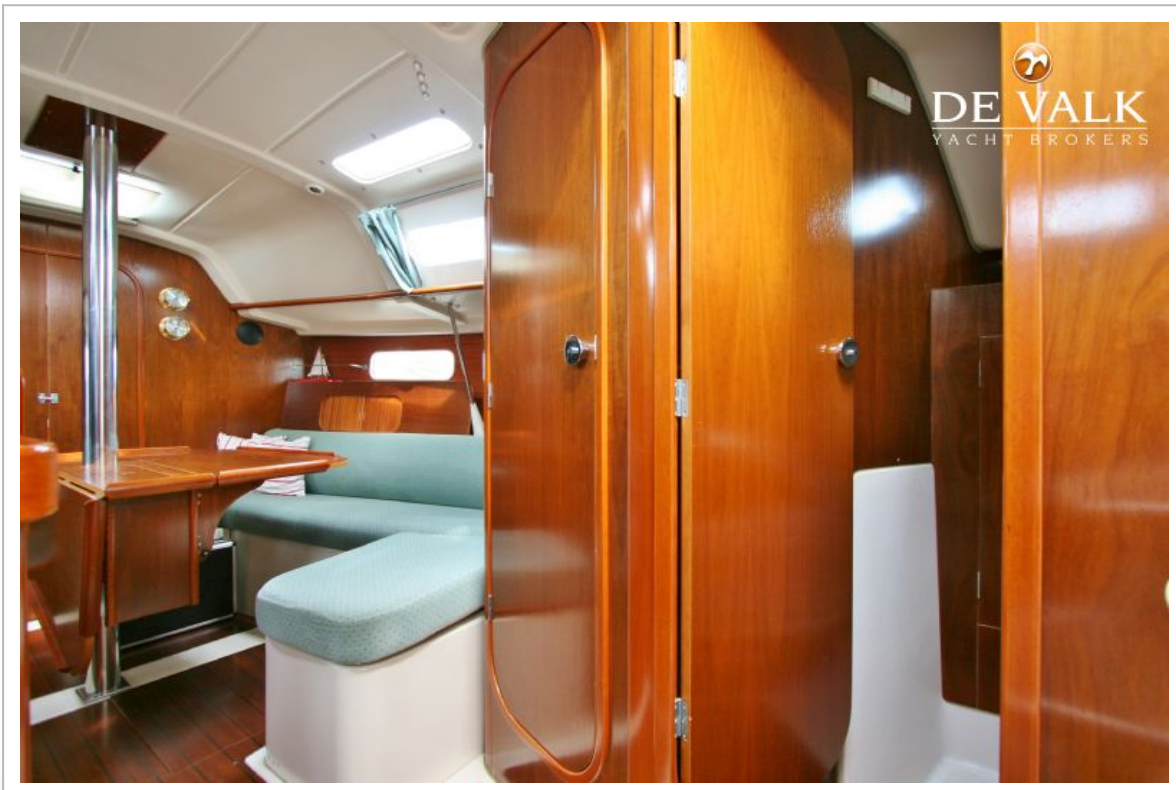
# BENETEAU OCEANIS 321



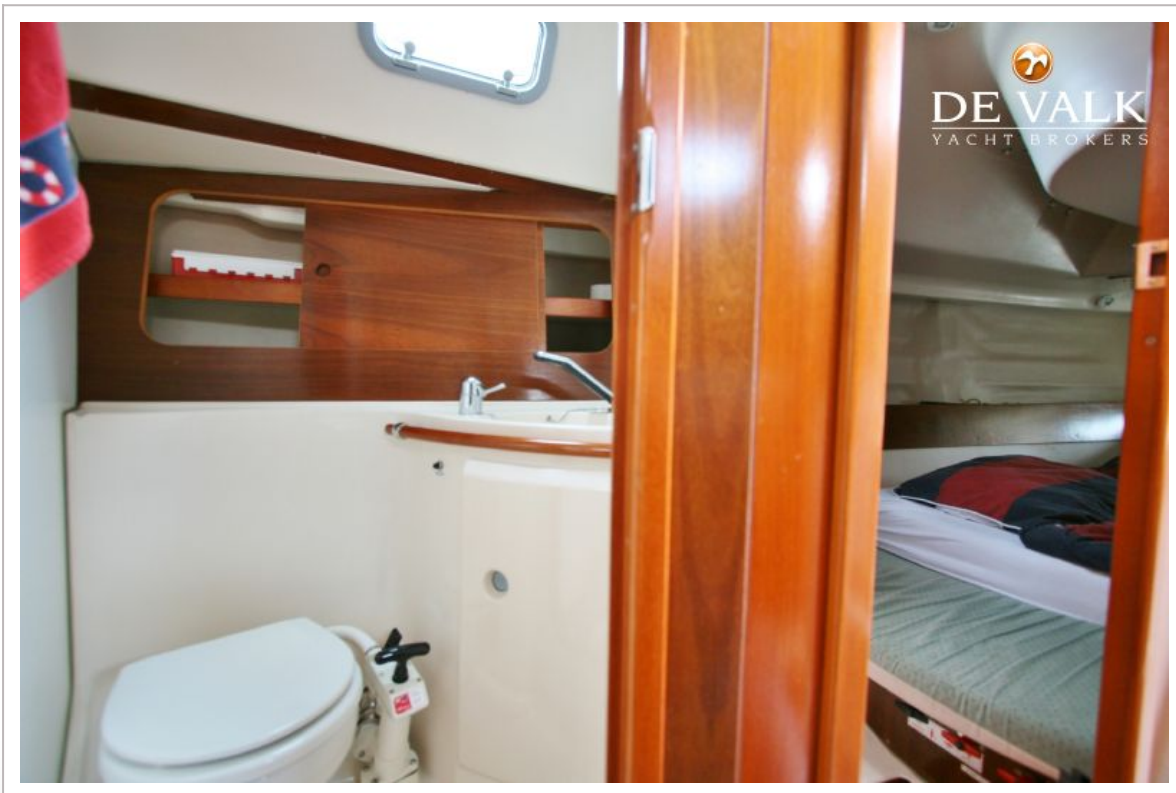
# BENETEAU OCEANIS 321



# BENETEAU OCEANIS 321



# BENETEAU OCEANIS 321



# BENETEAU OCEANIS 321

