



## HANSE 411

## BROKER'S COMMENTS

This Hanse 411 from 2004 is very well maintained and offers the necessary comfort, but is also suitable for the sportier sailor. With three cabins and the necessary sailing equipment you have easy access to any port. The "Judel and Vrolijk " design has elegant and powerful lines, that clearly accentuate the yacht. A yacht for easy sailing with family or friends. Ready to leave, you can get away with it straight away!

*Henri van Eelen*

## SPECIFICATIONS

<b>Dimensions</b>	12.35 x 4.05 x 1.98 (m)	<b>Builder</b>	Hanse / Greifswald
<b>Built</b>	2004	<b>Cabins</b>	2
<b>Material</b>	GRP	<b>Berths</b>	4
<b>Engine(s)</b>	1 x Yanmar 4JH3- E diesel	<b>Hp/Kw</b>	56.00 (hp), 41.16 (kw)
<b>Asking price</b>	sold (VAT )	<b>Lying</b>	contact Hindeloopen

## CONTACT

<b>Sales office</b>	De Valk Hindeloopen B.V.	<b>Telephone</b>	+31 514 52 40 00
<b>Address</b>	Oosterstrand 1 8713 JS Hindeloopen NL	<b>E-mail</b>	hindeloopen@devalk.nl

## DISCLAIMER

These particulars are given in good faith as supplied but cannot be guaranteed.



## GENERAL

Model	HANSE 411
Type	sailing yacht
LOA (m)	12,35
LWL (m)	10,90
Beam (m)	4,05
Draft (m)	1,98
Air draft (m)	20,00
Headroom (m)	2,00
Year built	2004
Builder	Hanse / Greifswald
Country	Germany
Designer	Judel/Vrolijk & Co Engineering
Displacement (t)	9,2
Ballast (tonnes)	lead in steel 3,16
CE norm	A
Hull material	GRP
Hull colour	off-white
Hull shape	round-bilged
Keel type	bulb keel
Superstructure material	GRP
Rubbing strake	aluminum
Deck material	GRP
Deck finish	teak
Superstructure deck finish	non-skid moulded in
Cockpit deck finish	teak
Antifouling (year)	2018
Window frame	aluminium
Deckhatch	2 big ones 4 littel ones
Fuel tank (litre)	stainless steel 120L
Level indicator (fuel tank)	yes



Freshwater tank (litre)	240L
Level indicator (freshwater)	yes
Blackwater tank (litre)	40L
Blackwater tank extraction	deck extraction + pump
Wheel steering	rack & pinion

## ACCOMMODATION

Cabins	2
Berths	4
Interior	mahogany
Floor	woodprint
Open cockpit	yes
Saloon	yes
Headroom saloon (m)	2m
Heating	diesel ducted hot air Webasto Airtop Evo 2009
Chart table	yes
Aft Cabin	yes
Dinette to convert into berth	yes
Sliding door to cockpit	yes
Galley	yes
Countertop	plastic
Sink	stainless steel 2
Cooker	calor gas
Oven	yes
Fridge	yes
Hot water system	220V + engine
Water pressure system	electrical Pomp 2011
Manual and/or foot pump	yes
Owners cabin	double bed
Bed length (m)	2m
Wardrobe	hanging and shelves



Bathroom	separate
Toilet	yes
Toilet system	manual
Wash basin	at the toilet
Shower	separate
Guest cabin 1	double bed
Bed length (m)	2m
Wardrobe	hanging
Bathroom	yes
Shower	separate
Central vacuum cleaner	yes

## MACHINERY

No of engines	1
Make	Yanmar
Type	4JH3- E
HP	56,00
kW	41,16
Fuel	diesel
Maximum speed (kn)	7,5
Cruising speed (kn)	6
Engine cooling system	freshwater heat exchanger
Drive	sail-drive
Engine controls	bowden cable
Gearbox	mechanical
Bowthruster	electric Sidepower 2009
Propeller type	folding
Propeller blades	2
Manual bilge pump	yes
Electrical installation	12V en 220
Batteries	4



Start battery	2016
Service battery	2 pcs 2017
Bowthruster battery	2009
Battery monitor	Clipper Battery Monitor BM-1
Shorepower	with cable

## NAVIGATION

Compass	yes
Electric compass	Raymarine 2016
Depth sounder	Raymarine 2016
Log	Raymarine 2016
Windset	yes
VHF	Navman
Autopilot	Raymarine
Radar	Furuno
GPS	2 Raymarine Furuno
Navtex	Morer 2016
AIS receiver	yes
AIS transponder	yes
Radio receiver	yes

## EQUIPMENT

Sprayhood with grab rail	yes
Cockpit table	yes
Boarding ladder	stainless steel
Deck shower	yes
Anchor	Danforth
Anchor chain	yes
Windlass	electrical
Sea railing	wire
Grab rail (superstructure)	wood



Pushpit	yes
Pulpit	yes
Life raft	valise (or bag)
Lifebuoy	yes
Danbuoy	yes
Safety lines on deck	yes
Rope cutter	yes
Radar reflector	yes
Fenders	yes
Mooring lines	yes
Spare parts	yes
Radio-cd player	Sony
Cockpit speakers	yes
Speakers in salon	yes

## RIGGING

Rigging	sloop
Standing rigging	wire
Brand mast	Sparcraft
Material mast	aluminium
Spreaders	2
Mainsail	50,6m2 Hagoort 2016
Jib	High aspect keefok 31.5m2 (Hagoort 2016)
Genoa	140% 59,4m2 (Northsails0
Spinnaker	+/- 120m2 (Hanse Logo)
Self tacking jib installation	yes
Reefing System	quick-one-line-reefing
Backstay adjuster	mechanical
Boomvang	gasspring
Primary sheet winch	6 (2 on roof, 1 electric)
Secondary sheet winch	2 on both sides Harken









# HANSE 411





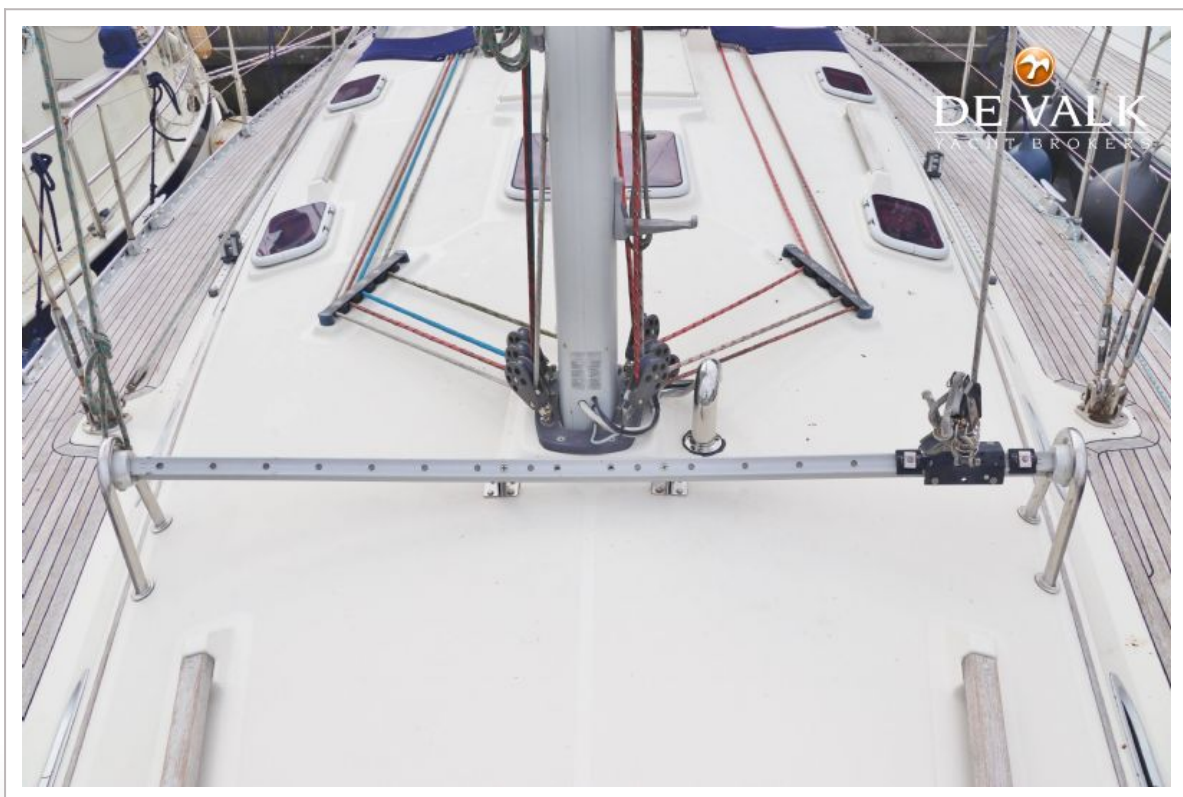


# HANSE 411





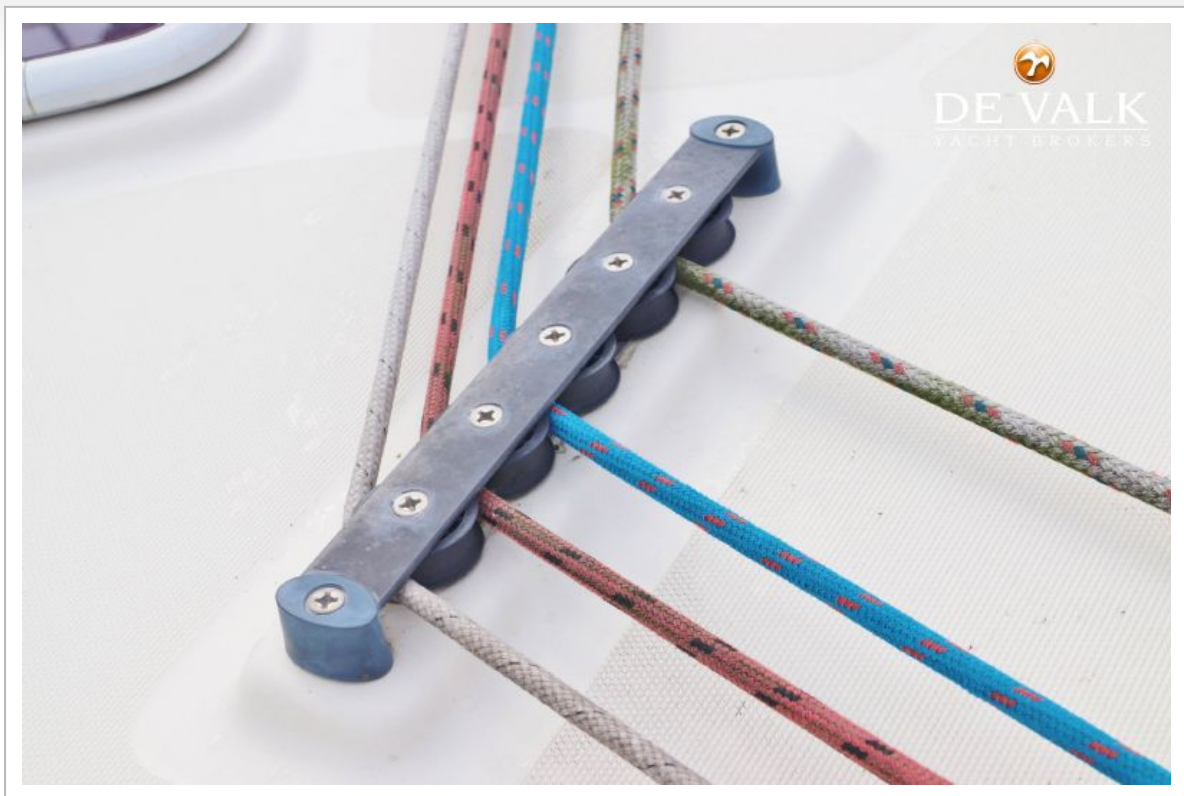
# HANSE 411



# HANSE 411

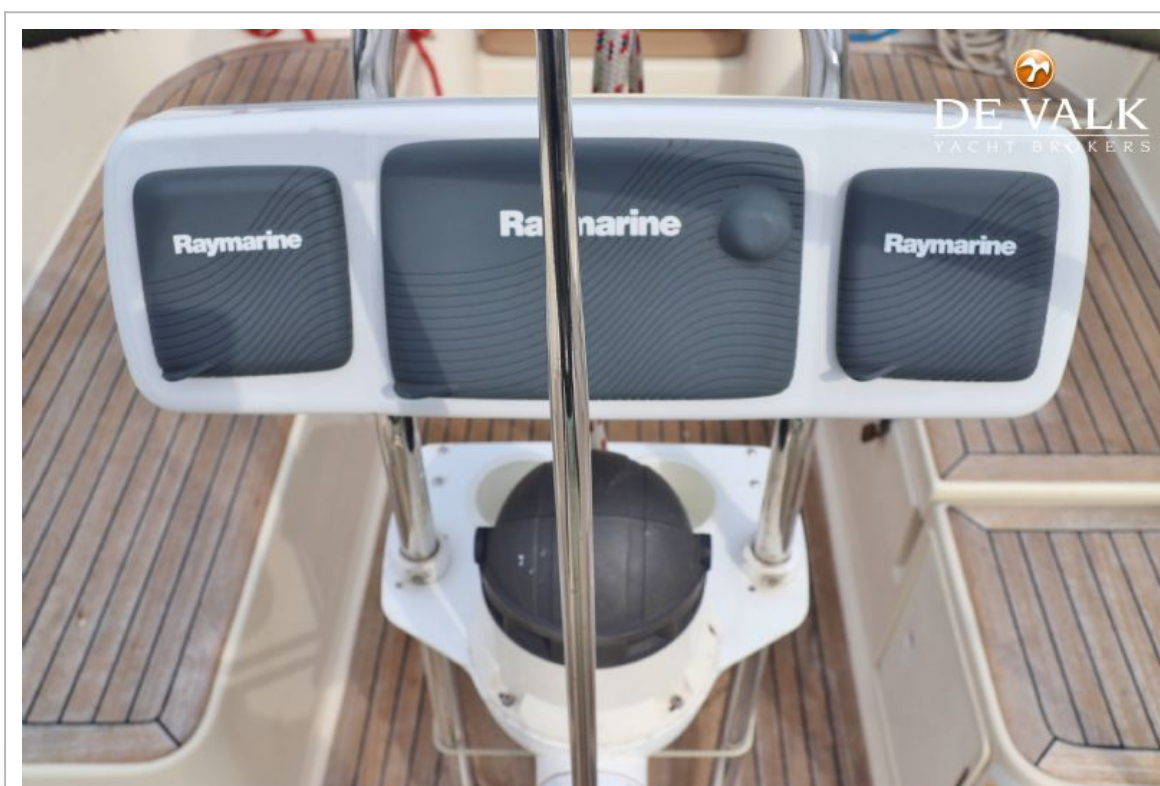


# HANSE 411





# HANSE 411



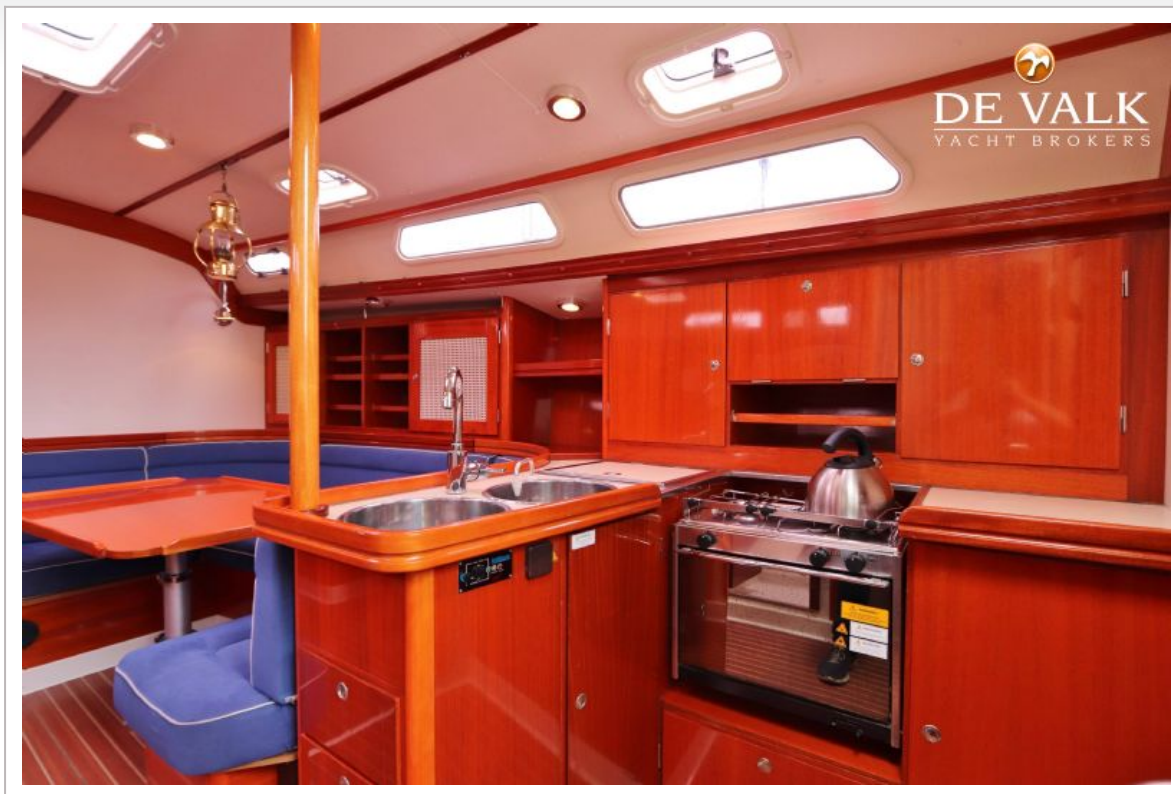




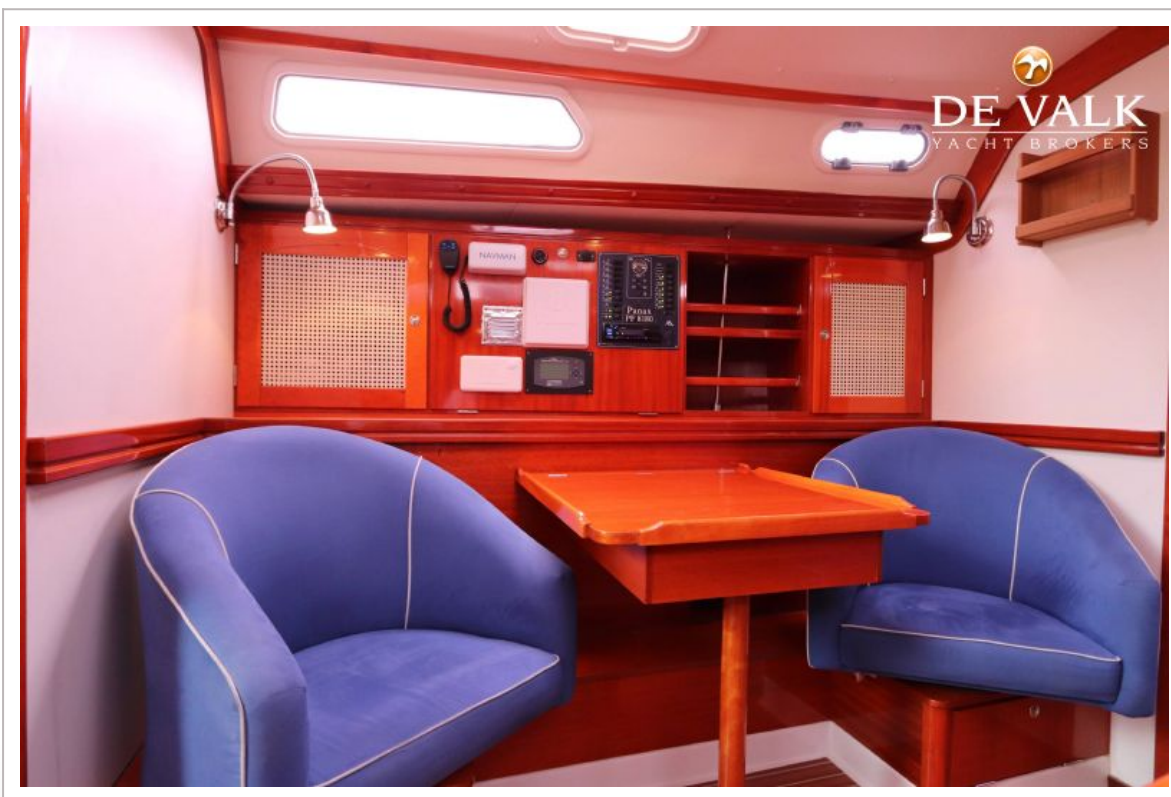




# HANSE 411

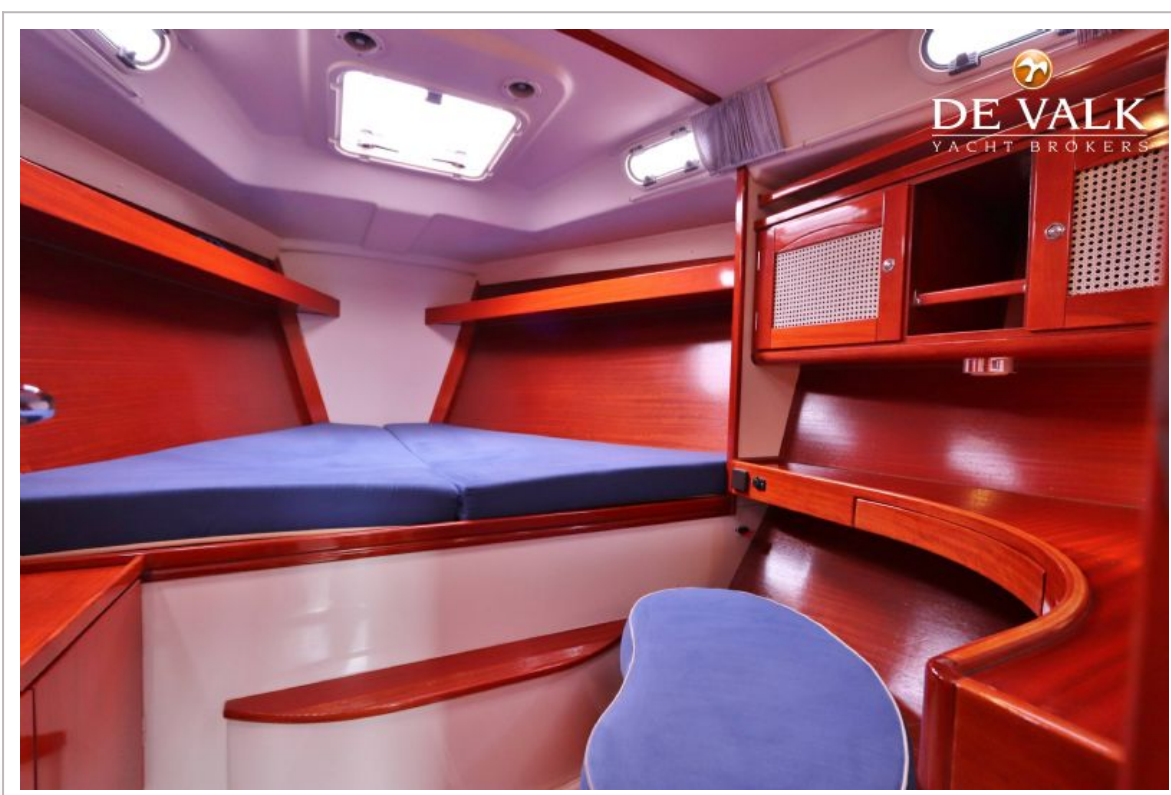


# HANSE 411





# HANSE 411

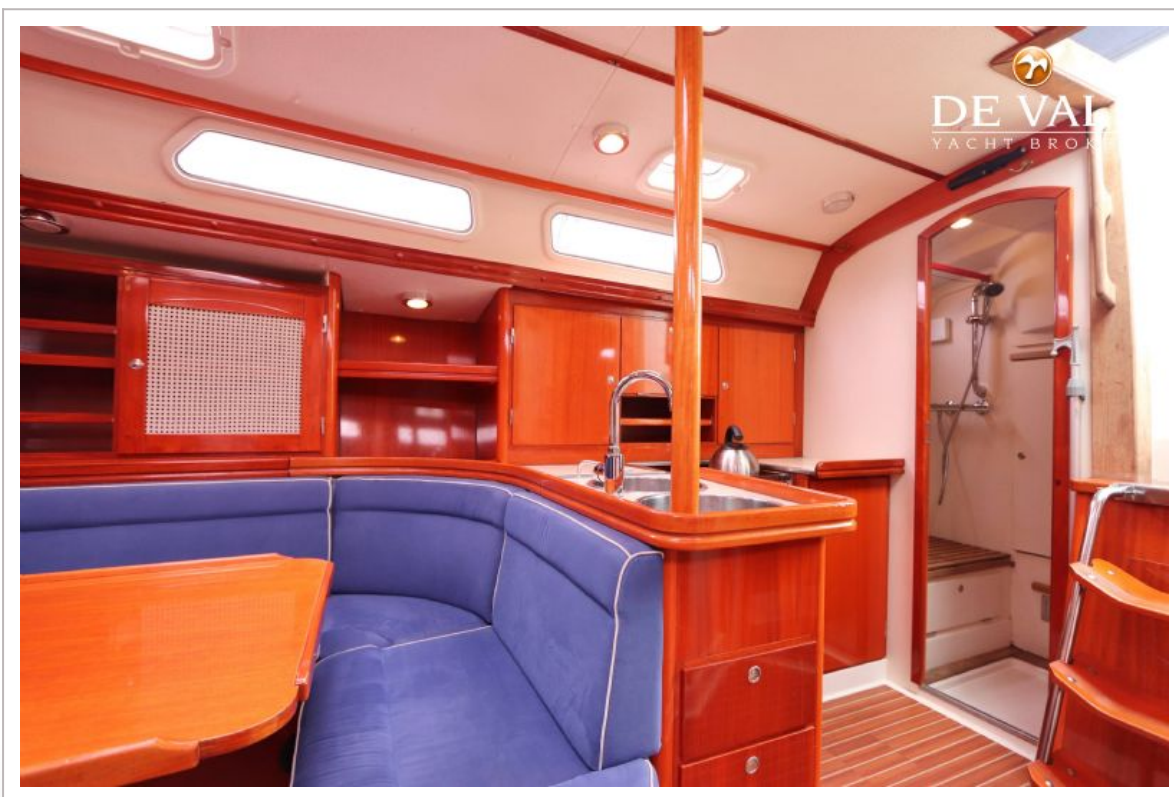
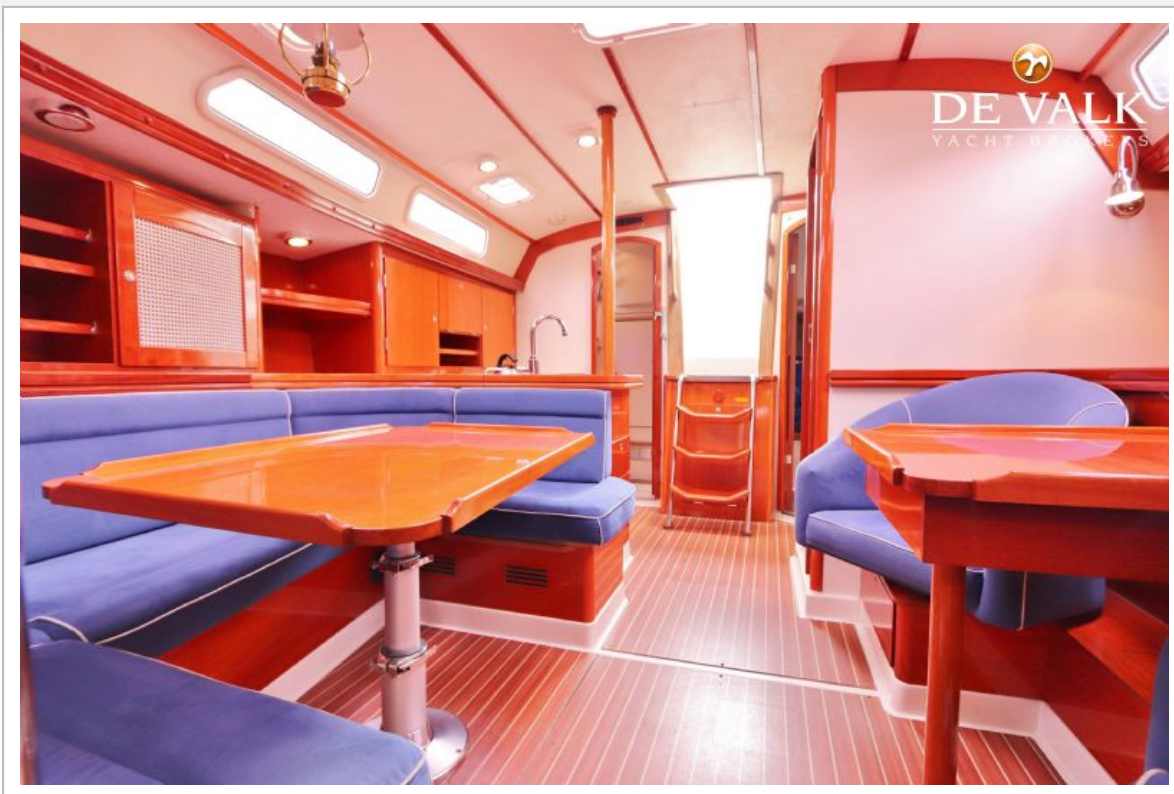


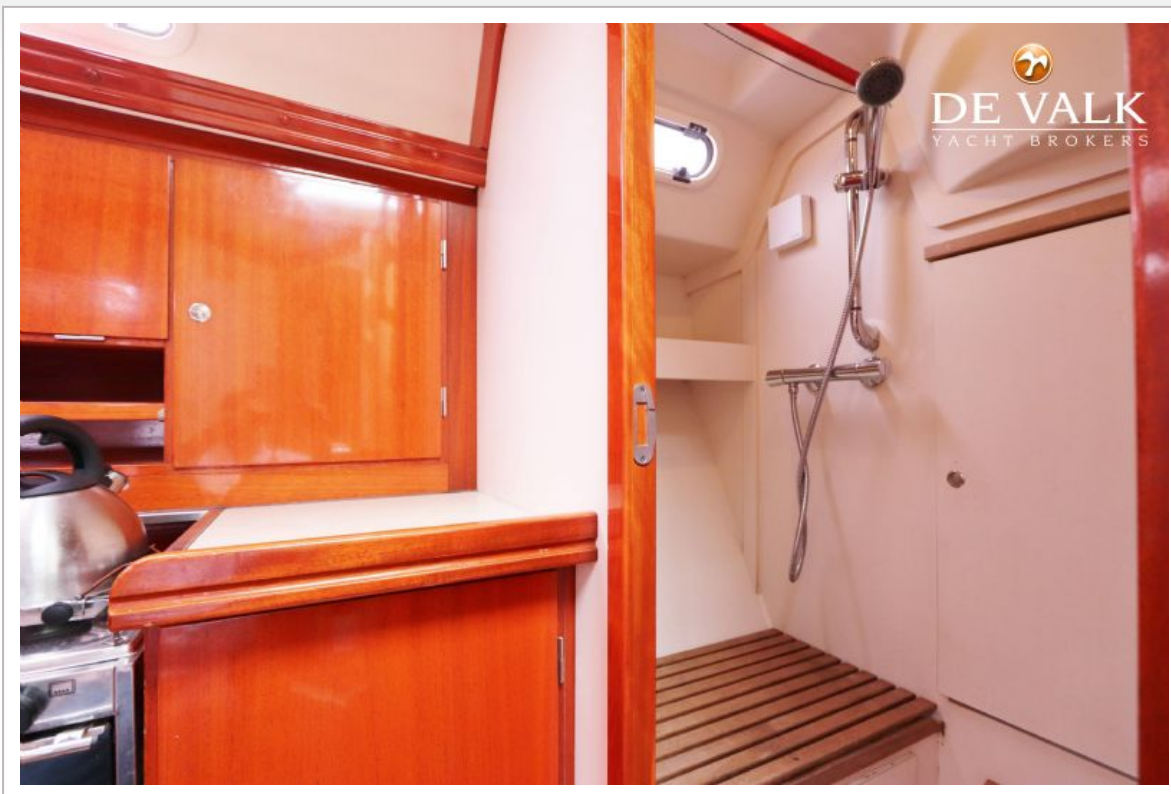
# HANSE 411





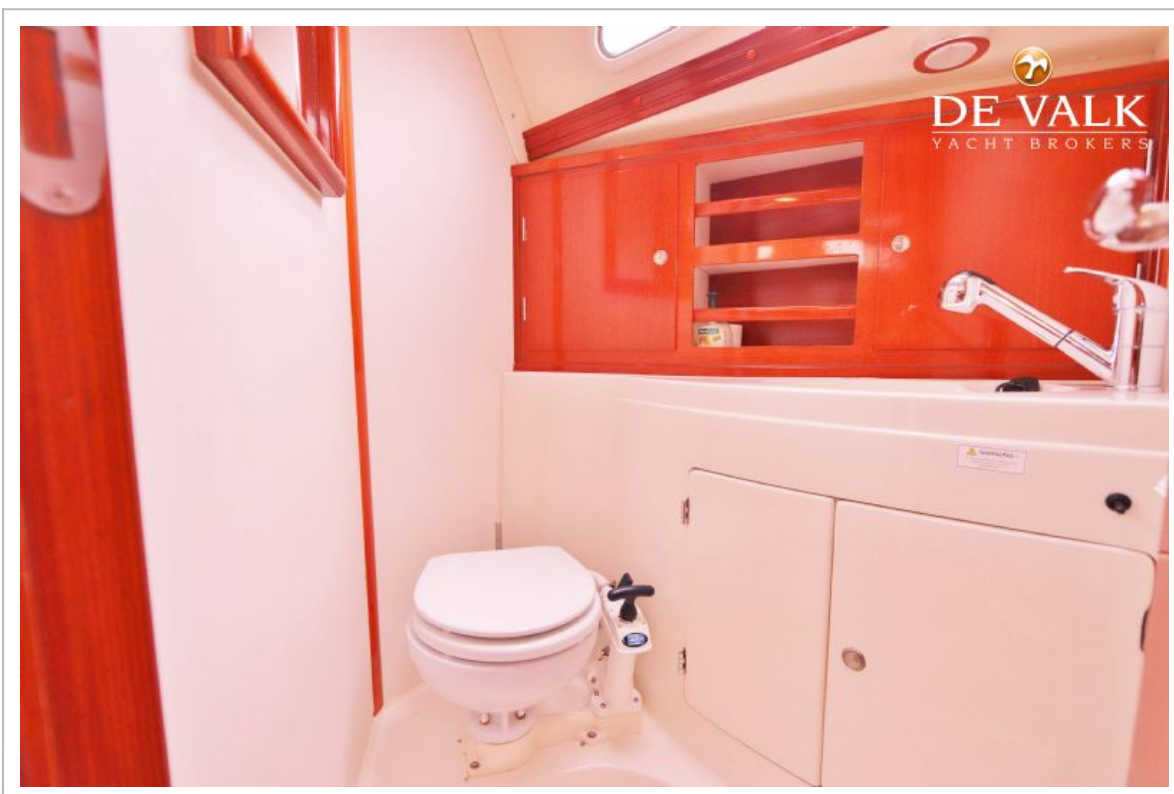
# HANSE 411







# HANSE 411



# HANSE 411





