



DE VALK
YACHT BROKERS

STILA 44



DE VALK
YACHT BROKERS

BROKERAGE | CHARTER | BERTHS | FINANCE | INSURANCE | YACHT MANAGEMENT

BROKER'S COMMENTS

Beautiful and unique sailing yacht, first one of a series of two. Designed by René van der Velden, known from larger yachts and luxury interiors and Piet van Oossanen, specialised in hydrodynamica. Result: a fast, strong and safe sailing yacht with classic appearance. The hull has been repainted in the modern/classic colour grey in 2018 (sailing pictures are in the last colour blue). The underwater vessel has also been completely treated. Now in the water and ready to sail. Visits by appointment. Can be delivered exclusive of VAT.

Johan Nooitgedagt

SPECIFICATIONS

Dimensions	13.28 x 3.90 x 1.92 (m)	Builder	Sea Style Shipyards
Built	2007	Cabins	3
Material	Vinylester	Berths	8
Engine(s)	1 x Volvo Penta D2-55-C diesel	Hp/Kw	55.00 (hp), 40.42 (kw)
Asking price	sold (VAT)	Lying	at sales office

CONTACT

Sales office	De Valk Hindeloopen B.V.	Telephone	+31 514 52 40 00
Address	Oosterstrand 1 8713 JS Hindeloopen NL	E-mail	hindeloopen@devalk.nl

DISCLAIMER

These particulars are given in good faith as supplied but cannot be guaranteed.



GENERAL

Model	STILA 44
Type	sailing yacht
LOA (m)	13,28
LWL (m)	11,30
Beam (m)	3,90
Draft (m)	1,92
Air draft (m)	19,70
Headroom (m)	1,90
Year built	2007
Builder	Sea Style Shipyards
Country	The Netherlands
Designer	Rene van der Velden & Oossanen
Displacement (t)	10,5
Ballast (tonnes)	lead in steel 3,7
CE norm	A
Hull material	vinylester
Hull colour	4 layers topcoat highgloss Taupe colour (2018)
Hull thickness (mm)	31
Hull shape	round-bilged
Keel type	wing keel
Superstructure material	epoxy and foam core
Superstructure (mm)	26
Deck plate thickness (mm)	26
Deck material	epoxy and foam core
Deck finish	teak 10 mm, sanded in 2018
Superstructure deck finish	non-skid moulded in
Cockpit deck finish	teak 10 mm, sanded in 2018
Antifouling (year)	newly built up internal primocon/primer & interspeed antifouling
Dorades	stainless steel 4 x
Window material	polycarbonate



Deckhatch	Stainless steel with mosquito nets & curtains (2018)
Fuel tank (litre)	stainless steel 160
Level indicator (fuel tank)	yes
Freshwater tank (litre)	epoxy 360
Level indicator (freshwater)	yes
Blackwater tank (litre)	polyethylene 80
Blackwater tank extraction	deck extraction + uw line
Greywater tank (litre)	20
Wheel steering	rack & pinion JEFA stainless with leather Ø 1.30
Extra info	Keel steel, lead bulb epoxy wing, Stainless steel keel bolts
Extra info	JEFA rudder bearings JEFA rudder bearings
Extra info	Polish yard with Dutch supply and construction supervision

ACCOMMODATION

Cabins	3
Berths	8
Interior	Fuma lightweight tropical wood with cherry veneer and high gloss
Floor	teak Waterproof
Open cockpit	yes
Saloon	yes
Headroom saloon (m)	1,90
Heating	diesel ducted hot air Webasto air top 5000
Navigation center	yes
Chart table	yes
Aft Cabin	2 x
Dinette to convert into berth	yes
Opening door to cockpit	yes
Galley	yes
Countertop	wood with extra hard coating
Sink	stainless steel Double



Cooker	calor gas Force 10 - 3 burner
Oven	In Force 10
Gas alarm	2 sensors
Fridge	100 liter
Hot water system	220V + engine 800W - 55 liter boiler
Water pressure system	electrical
Owners cabin	double bed
Bed length (m)	2,00
Wardrobe	hanging and shelves
Bathroom	separate
Toilet	shared
Toilet system	electric Tacma
Wash basin	in the bathroom
Shower	shared
Guest cabin 1	double bed
Bed length (m)	2,06
Wardrobe	hanging and shelves
Guest cabin 2	double bed 2,06
Wardrobe	hanging and shelves
Extra info	water pressure system separated freshwater from tank, and outside water for rinsing
Extra info	Cantalupi insite led lights on dimmer , Ticino light switches, blue LED orientation lighting in baseboards and swimming ladder

MACHINERY

No of engines	1
Make	Volvo Penta
Type	D2-55-C
HP	55
kW	40,42
Fuel	diesel
Year installed	2007



Maximum speed (kn)	8
Cruising speed (kn)	6,5
Consumption (l/hr)	4,5
Range (nm)	216
Engine hours	1502
Engine cooling system	freshwater heat exchanger
Drive	shaft
Shaft seal	Volvoseal (2016)
Engine controls	bowden cable Renewd (2018)
Gearbox	hydraulic MS25L
Bowthruster	electric Sidepower 75KgF
Exhaust	watercooled
Propeller type	folding VariFold bronze 19"
Propeller blades	3
Propeller shaft material	stainless steel 35mm
Shaft lubrication	water
Manual bilge pump	all compartments connected
Electric bilge pump	yes
Bilge alarm	yes
Electrical installation	12v/220v
Start battery	1 x 120Ah mastervolt Gel
Service battery	3 x 200Ah mastervolt gel(2017)
Bowthruster battery	2 x 40Ah oddessy deepcicle
Battery monitor	Mastervolt Mass Charger inverter controle
Battery charger/inverter	Mastervolt Combi 12v 100A 2000w (2015)
Shorepower	with cable
Insulation transformer	Mastervolt
Extra info	Electrical system by Bakker Yacht Electro.
Extra info	2 x alternators 115 Amp & 95 Amp with Alpha regulator

NAVIGATION



Compass	Plastimo
Depth sounder/log	Data from Raymarine ST60+ TRIDATA
Log	Tridata
Windset	Raymarine ST60+ WIND and CH WIND
Repeater	Inside Raymarine ST60+ GRAPHIC
VHF	Raymarine Ray 240E
Autopilot	Raymarine ST 6002 SmartPilot
Rudder angle indicator	on autopilot
Radar/GPS/plotter	Raymarine C80
Navtex	ICS Nav6

EQUIPMENT

Sprayhood	collapsible, with extension
Cockpit table	demountable
Bathing platform	collapsible With ledlight (2018)
Boarding ladder	stainless steel
Deck shower	stainless holder
Anchor	Delta 20kg
Anchor chain	Stainless steel 10mm - 60mtr
Windlass	Electrical Muir VR2200 vertical (refit 2018)
Deck wash	at anchor winch with choice of sweet / salt water
Dinghy	(2015)
Sea railing	wire Stainless steel
Grab rail (superstructure)	stainless steel
Life raft	container Eurovinyl
Life raft (pers)	6
Last life raft survey	no, must be inspected
Fenders	yes
Mooring lines	yes
Spare parts	yes
Radio-cd player	Pioneer



Speakers in salon	yes
Fire extinguisher	must be inspected
Extinguisher in engine room	must be inspected
Auto extinguisher system	yes

RIGGING

Rigging	fractional
Standing rigging	wire 1 x 19 dynaform
Brand mast	Holland Spar Custommade heavy duty Makra
Material mast	aluminium coated Awlgrip
Spreaders	15 degrees backwards
Mainsail	yes
Mainsail cover	yes, Lazyjacks
Battcars	5 X
Fully battened mainsail	51 m² battened 5 x
Jib	35m²
High aspect	40,5m²
Genoa	51m²
Genoa furler	under deck Seldén 300TD
Spinnaker	135m²
Self tacking jib installation	unmounted
Reefing System	slabreefing
Backstay adjuster	hydraulic 2 x Holmatro
Boomvang	gasspring Forespar
Primary sheet winch	Electric 2 x Andersen 46ST
Secondary sheet winch	2 x Andersen 40ST
Halyard winches	1 x Andersen 40ST on mast
Spi-pole	aluminium Makra on mastrail
Extra info	Ronstan deck hardware
Extra info	Spinlock stoppers



STILA 44





STILA 44





STILA 44

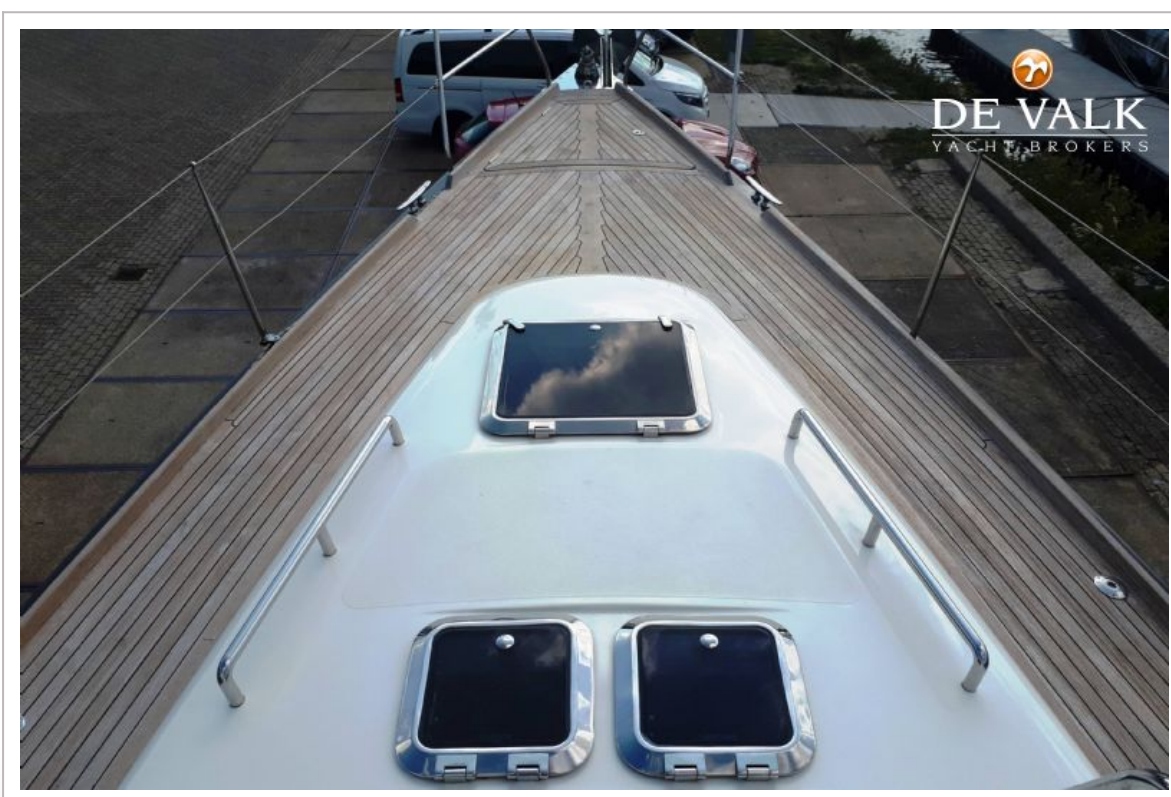
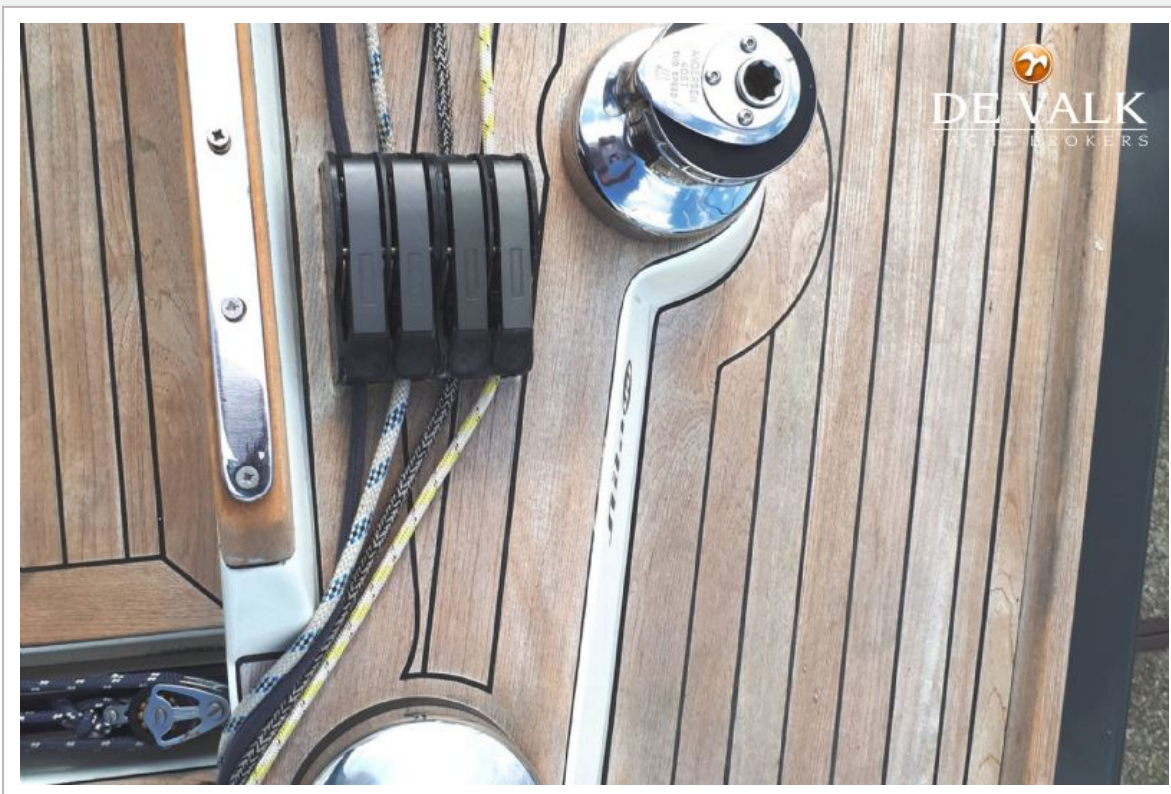




STILA 44

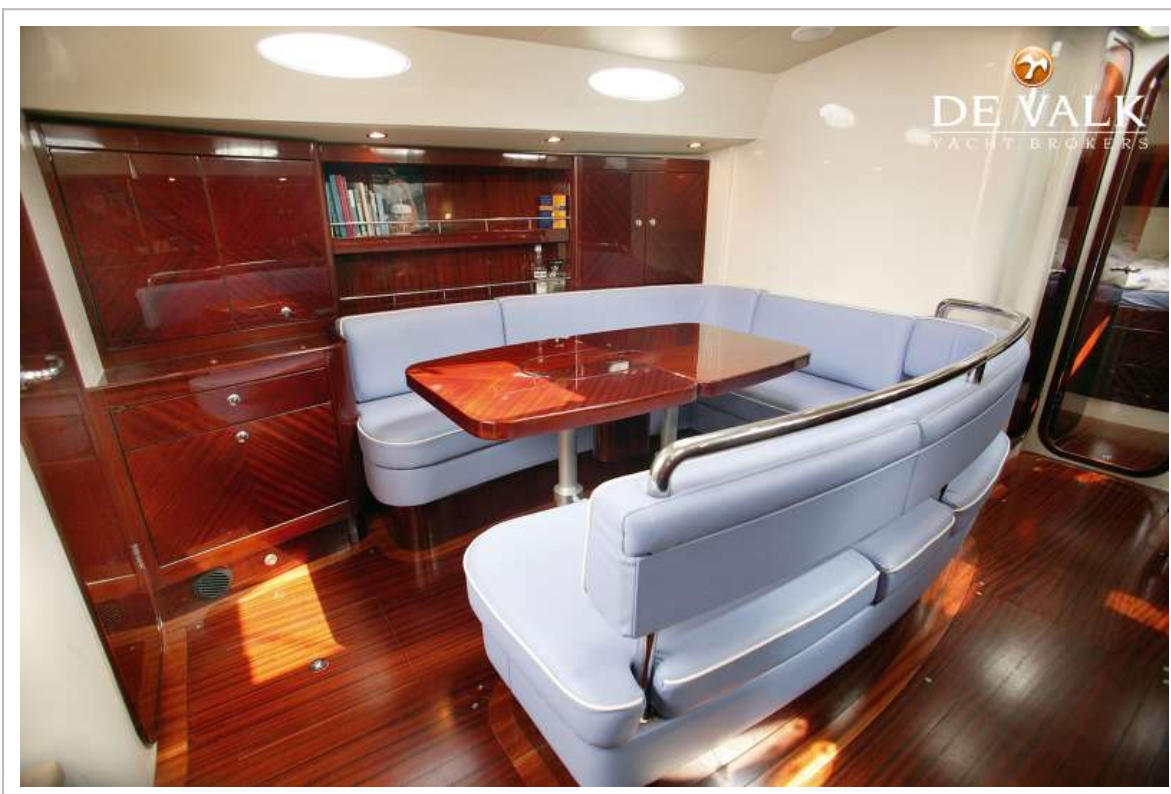


STILA 44









STILA 44

