



## MALO 40 CLASSIC



DE VALK  
YACHT BROKERS

# MALO 40 CLASSIC

## BROKER'S COMMENTS

The Malö 40 Classic is a well-known Scandinavian yacht. It is a thoughtful design that is perfectly executed. This Malö 40 Classic is fully equipped, regarding sails and navigation equipment. It is luxuriously furnished with great attention to comfort, safety and performance. There is plenty of storage space in easily accessible places. The sails can be operated from the cockpit and the genoa winches are electrical.

*Johan Schootstra*

## SPECIFICATIONS

<b>Dimensions</b>	12.65 x 3.83 x 2.05 (m)	<b>Builder</b>	Malo
<b>Built</b>	2005	<b>Cabins</b>	2
<b>Material</b>	GRP	<b>Berths</b>	5
<b>Engine(s)</b>	1 x Yanmar 4JH4-E diesel	<b>Hp/Kw</b>	56.00 (hp), 41.16 (kw)
<b>Asking price</b>	sold (VAT )	<b>Lying</b>	elsewhere / Not at sales office

## CONTACT

<b>Sales office</b>	De Valk Hindeloopen B.V.	<b>Telephone</b>	+31 514 52 40 00
<b>Address</b>	Oosterstrand 1 8713 JS Hindeloopen NL	<b>E-mail</b>	hindeloopen@devalk.nl

## DISCLAIMER

These particulars are given in good faith as supplied but cannot be guaranteed.



# MALO 40 CLASSIC

## GENERAL

Model	MALO 40 CLASSIC
Type	sailing yacht
LOA (m)	12,65
LWL (m)	10,50
Beam (m)	3,83
Draft (m)	2,05
Air draft (m)	18,20
Headroom (m)	1,95
Year built	2005
Builder	Malo
Country	Sweden
Designer	Leif Angermark
Displacement (t)	12,2
Ballast (tonnes)	lead 3,6
CE norm	A
Hull material	GRP
Hull colour	white
Hull shape	round-bilged
Keel type	fin keel
Superstructure material	GRP
Rubbing strake	stainless steel
Deck material	GRP
Deck finish	teak
Superstructure deck finish	teak
Cockpit deck finish	teak
Dorades	3x
Window frame	aluminium
Window material	polycarbonate
Deckhatch	2x
Fuel tank (litre)	stainless steel 260



# MALO 40 CLASSIC

Level indicator (fuel tank)	yes
Freshwater tank (litre)	stainless steel 2x total 450
Level indicator (freshwater)	yes
Blackwater tank (litre)	yes
Level indicator (blackwater)	yes
Blackwater tank extraction	deck extraction + uw line
Wheel steering	Jefa steering system
Emergency tiller	yes
More info on hull	Version with positive stern + 30cm

## ACCOMMODATION

Cabins	2
Berths	5
Interior	mahogany
Floor	teak and holly
Open cockpit	yes
Saloon	yes
Headroom saloon (m)	1,95
Heating	diesel ducted hot air Eberspacher
Chart table	yes
Aft Cabin	1x
Galley	yes
Countertop	corian
Sink	stainless steel
Cooker	calor gas Eno - 2 burner
Oven	In cooker
Fridge	with freezer compartment
Hot water system	220V + engine
Water pressure system	electrical
Owners cabin	v-bed
Bed length (m)	2,02



# MALO 40 CLASSIC

Wardrobe	hanging/drawers/shelves
Wash basin	at the toilet
Shower	en suite
Guest cabin 1	double bed
Bed length (m)	2,08
Wardrobe	shelves and hanging
Bathroom	shared
Toilet	shared
Toilet system	manual
Wash basin	in the bathroom
Shower	shared
Extra info	heated cabinet for sailing gear

## MACHINERY

No of engines	1
Make	Yanmar
Type	4JH4-E
HP	56,00
kW	41,16
Fuel	diesel
Year installed	2005
Maximum speed (kn)	8
Cruising speed (kn)	6
Engine hours	1797
Engine cooling system	freshwater heat exchanger
Drive	shaft
Engine controls	bowden cable
Gearbox	mechanical
Bowthruster	electric Sidepower
Exhaust	watercooled
Thrust bearing	yes



# MALO 40 CLASSIC

Propeller type	folding
Propeller blades	3
Propeller shaft material	stainless steel
Shaft lubrication	water
Manual bilge pump	yes
Electric bilge pump	yes
Electrical installation	12 / 220 V
Batteries	3x 130 ah
Battery monitor	yes
Battery charger	yes
Inverter	yes
Shorepower	with cable

## NAVIGATION

Compass	Olympic 135
Depth sounder	Raymarine ST60
Log	Raymarine ST60
Windset	2x Raymarine ST60
Repeater	Raymarine ST60 Grafic
VHF	inside and outside Raymarine Ray 240
Autopilot	Raymarine Smartpilot
Rudder angle indicator	On autopilot
Radar	Raymarine
Radar/GPS/plotter	Raymarine E120 / E80
Navtex	ICS Nav6
AIS receiver	yes
AIS transponder	yes

## EQUIPMENT

Fixed windscreen	yes
Sprayhood	yes



# MALO 40 CLASSIC

Cockpit cover	yes
Cockpit cushions	yes
Cockpit table	yes
Boarding ladder	stainless steel
Deck shower	yes
Anchor	yes
Anchor chain	yes
Anchor 2	yes
Windlass	electrical
Sea railing	wire
Grab rail (superstructure)	teak
Railing side opening gates	yes
Pushpit	yes
Pulpit	yes
Fenders	yes
Mooring lines	yes
TV	Electric lift system
Radio-cd player	yes
Cockpit speakers	yes
Speakers in salon	yes
Clock - barometer	yes
Extra info	stern anchor launch system

## RIGGING

Rigging	sloop
Standing rigging	wire
Brand mast	Seldén
Material mast	aluminium
Spreaders	2x
Mainsail	2012 - Quantum
Stoway mast	yes



# MALO 40 CLASSIC

Cutterstay	removable
Genoa	2012 - Quantum
Genoa furler	yes
Gennaker	yes
Reefing System	main in-mast furling
Backstay adjuster	mechanical
Boomvang	gasspring
Primary sheet winch	2x Andersen
Genoa sheetwinches	2x Andersen electric
Gennaker pole	aluminium Attached on mast





# MALO 40 CLASSIC



# MALO 40 CLASSIC





# MALO 40 CLASSIC

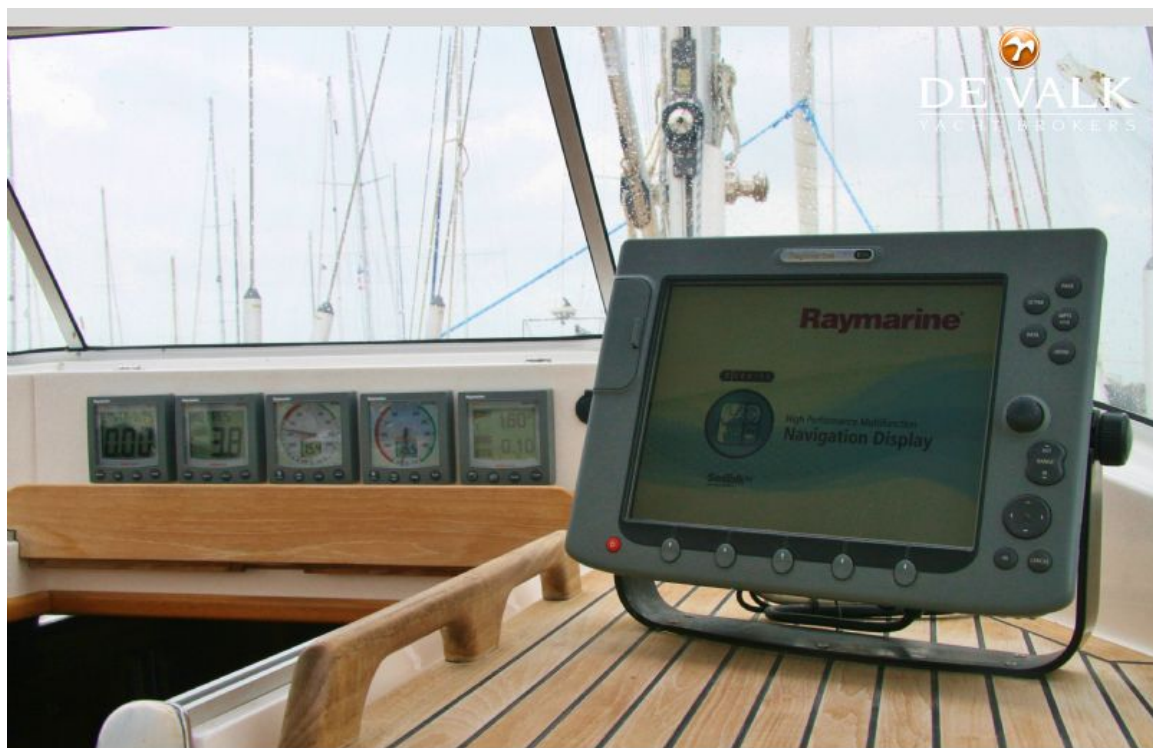


# MALO 40 CLASSIC





# MALO 40 CLASSIC



# MALO 40 CLASSIC

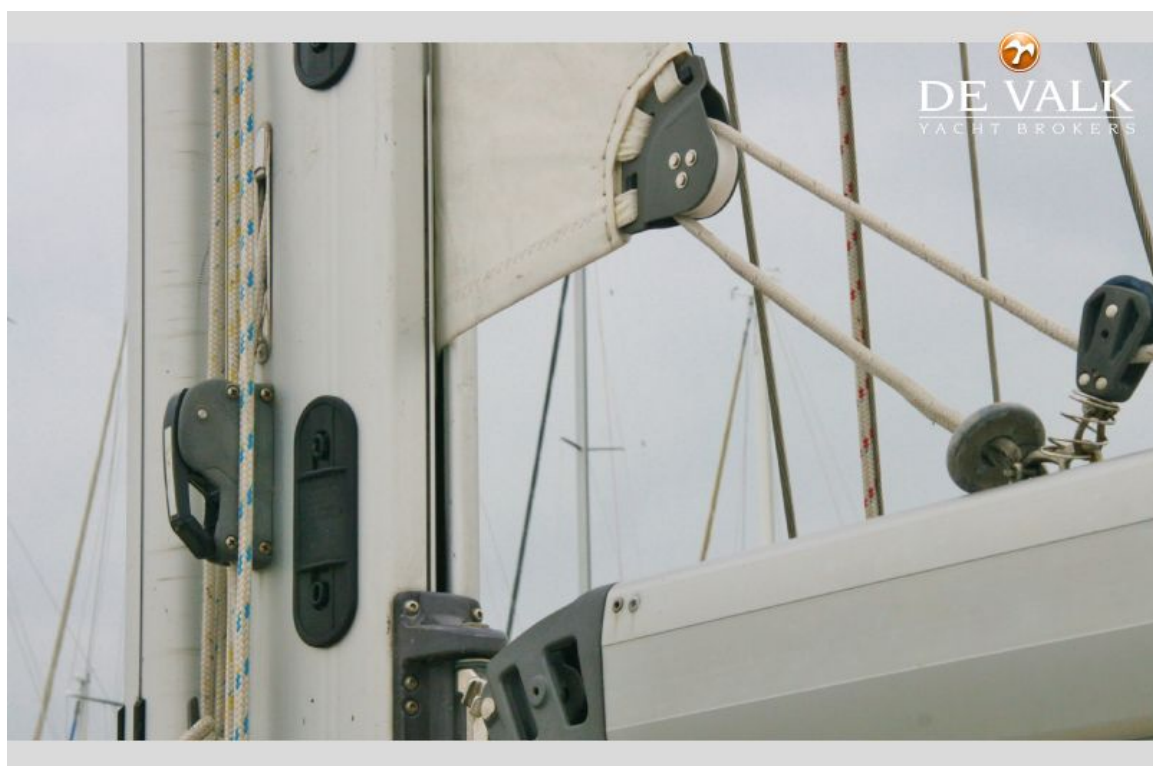




# MALO 40 CLASSIC



# MALO 40 CLASSIC

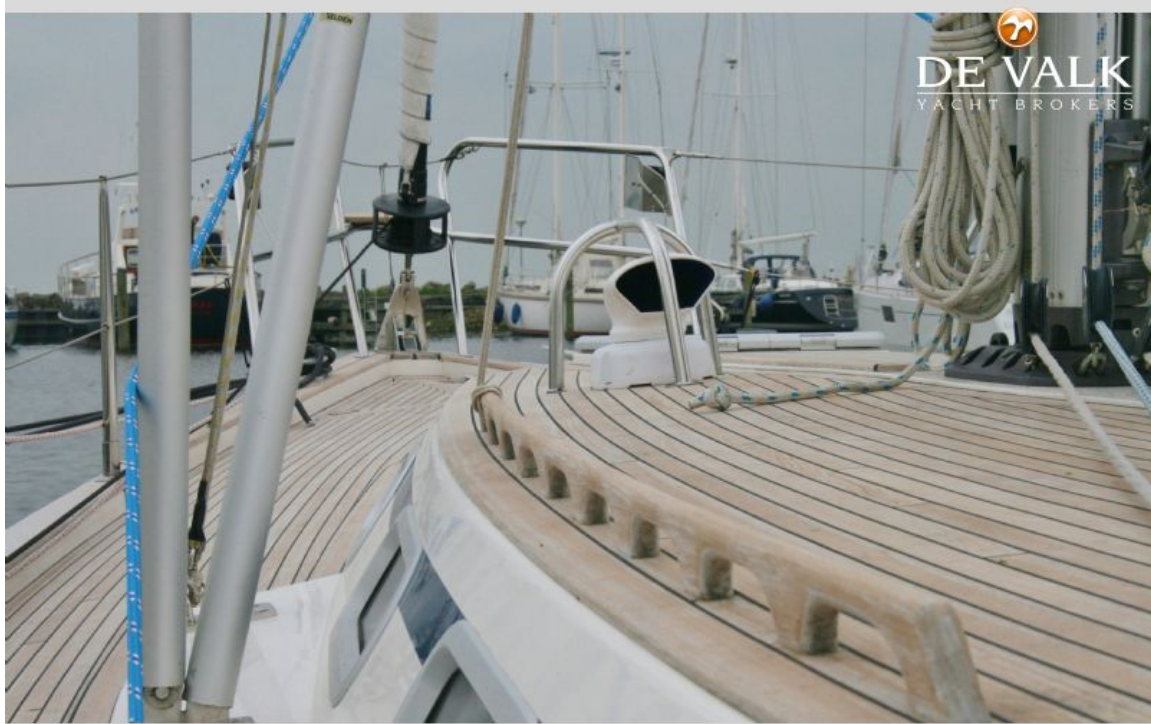




# MALO 40 CLASSIC



# MALO 40 CLASSIC





# MALO 40 CLASSIC

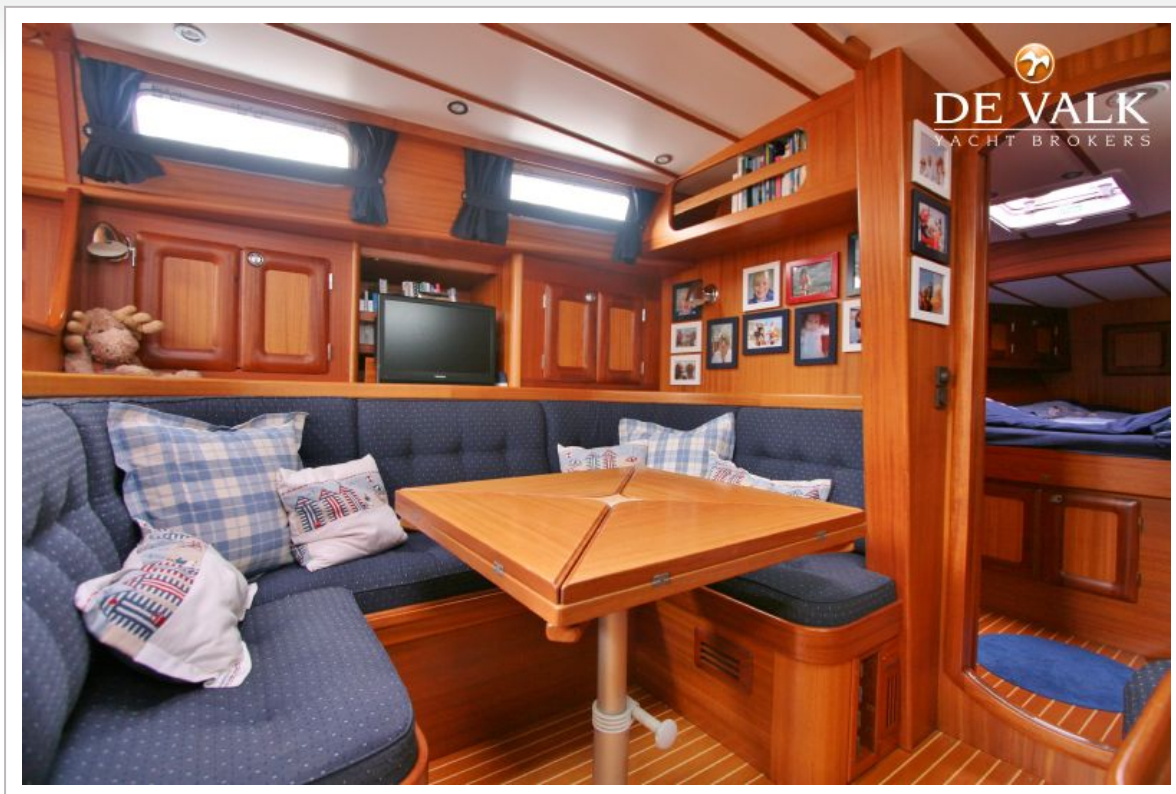


# MALO 40 CLASSIC





# MALO 40 CLASSIC



# MALO 40 CLASSIC

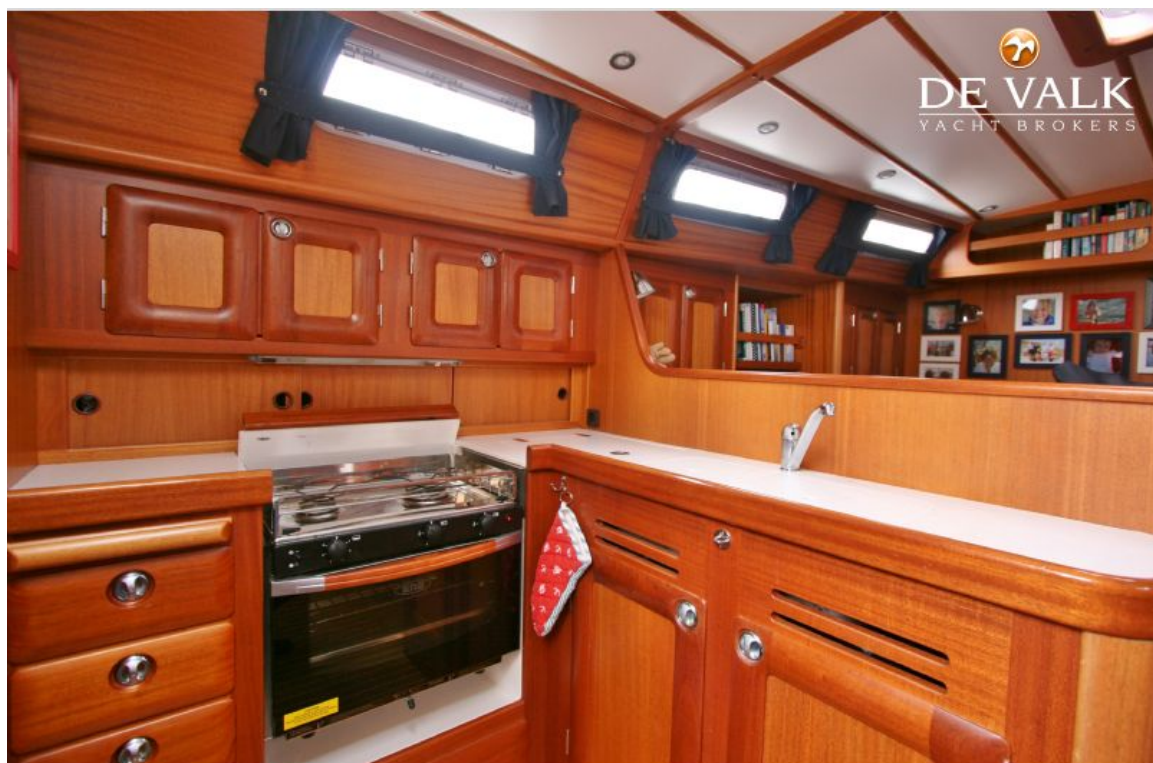




# MALO 40 CLASSIC

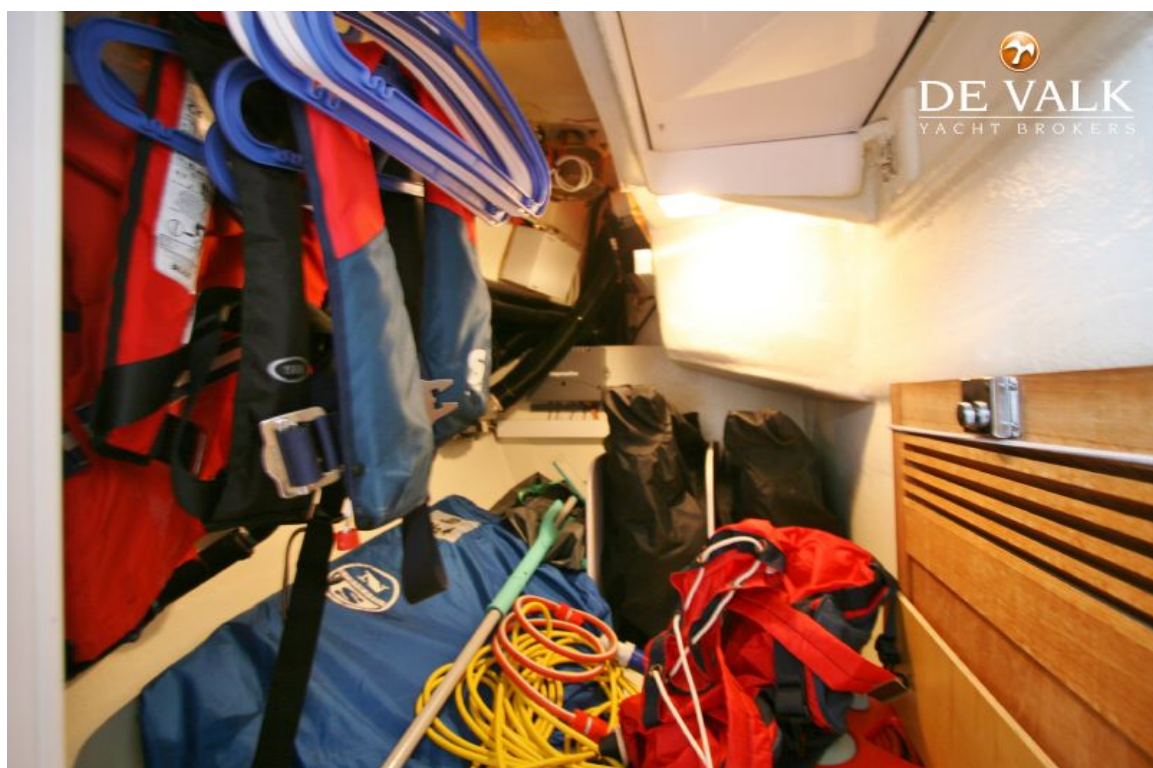


# MALO 40 CLASSIC

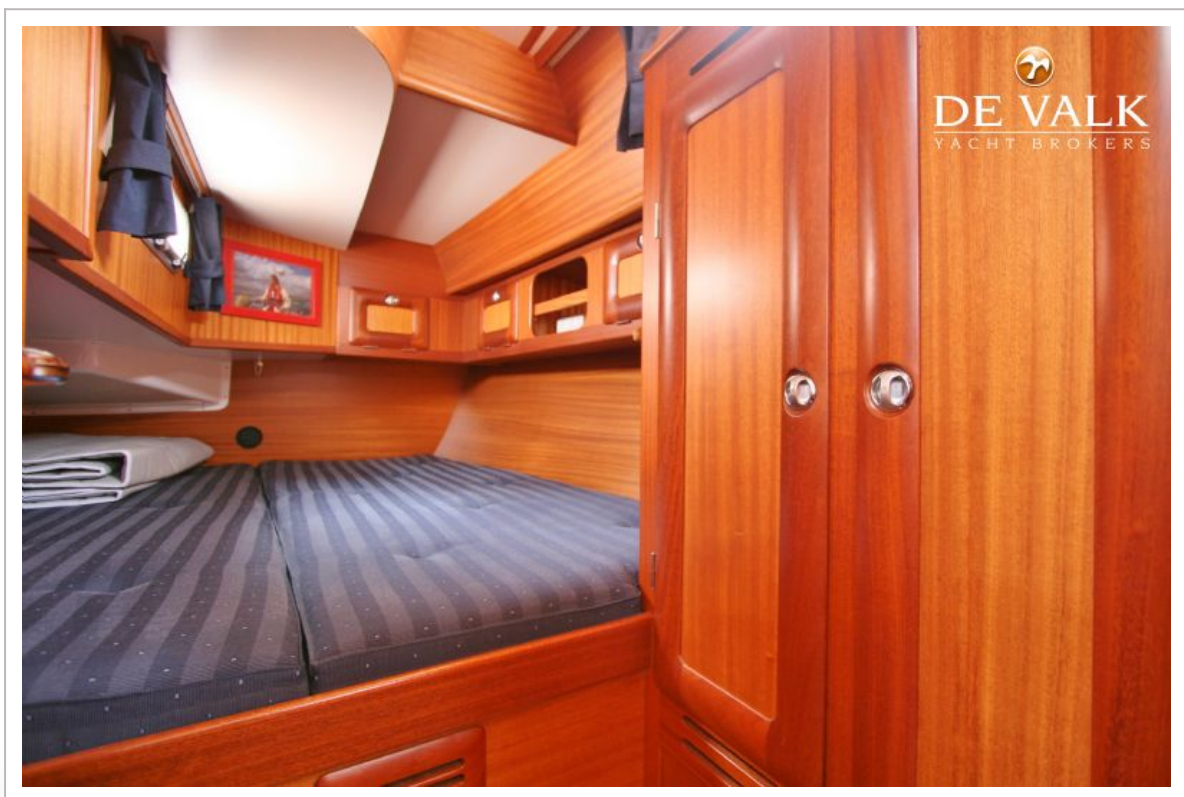




# MALO 40 CLASSIC



# MALO 40 CLASSIC





# MALO 40 CLASSIC

