



DE VALK
YACHT BROKERS



HALLBERG RASSY 39



DE VALK
YACHT BROKERS

HALLBERG RASSY 39

BROKER'S COMMENTS

The Hallberg Rassy 39 is one of the most popular yachts among sailors, because of her performance, seaworthiness and comfort. Very well maintained Hallberg Rassy 39 only 485 engine hours and 8653 nm, equipped with in-mast furling, furling genna, bow thruster, electric anchor winch and much more. Her interior is roomy with ample storage space. Lying in Hindeloopen.

Johan Schootstra

SPECIFICATIONS

Dimensions	11.85 x 3.75 x 1.85 (m)	Builder	Hallberg Rassy
Built	1993	Cabins	2
Material	GRP	Berths	6
Engine(s)	1 x Volvo Penta MD22 diesel	Hp/Kw	57.00 (hp), 41.90 (kw)
Asking price	sold (VAT)	Lying	at sales office

CONTACT

Sales office	De Valk Hindeloopen B.V.	Telephone	+31 514 52 40 00
Address	Oosterstrand 1 8713 JS Hindeloopen NL	E-mail	hindeloopen@devalk.nl

DISCLAIMER

These particulars are given in good faith as supplied but cannot be guaranteed.



GENERAL

Model	HALLBERG RASSY 39
Type	sailing yacht
LOA (m)	11,85
LWL (m)	9,30
Beam (m)	3,75
Draft (m)	1,85
Air draft (m)	17,30
Headroom (m)	1,95
Year built	1993
Builder	Hallberg Rassy
Country	Sweden
Designer	German Frers
Displacement (t)	10
Ballast (tonnes)	lead 4,2
Hull material	GRP
Hull colour	white
Hull shape	round-bilged
Keel type	fin keel with bulb
Superstructure material	GRP
Rubbing strake	stainless steel GRP with
Deck material	GRP
Deck finish	teak
Superstructure deck finish	teak
Cockpit deck finish	teak
Antifouling (year)	2015
Dorades	4x
Window frame	aluminium
Window material	tempered glass
Deckhatch	4
Insulation	foam



Fuel tank (litre)	stainless steel 370
Level indicator (fuel tank)	yes
Freshwater tank (litre)	430
Level indicator (freshwater)	yes
Wheel steering	mechanical Solimar
Emergency tiller	yes

ACCOMMODATION

Cabins	2
Berths	6
Interior	mahogany
Floor	teak and holly
Open cockpit	yes
Saloon	yes
Headroom saloon (m)	1,95
Heating	diesel ducted hot air Webasto
Chart table	yes
Convertible berth	yes
Galley	yes
Sink	stainless steel 2x
Cooker	calor gas ENO
Oven	In Cooker
Fridge	with freezer compartment Frigomatic
Hot water system	220V + engine
Water pressure system	electrical
Owners cabin	twin single Aft cabin
Bed length (m)	2
Wardrobe	hanging and drawers
Guest cabin 1	v-bed
Bed length (m)	2
Wardrobe	hanging and drawers



Bathroom	shared
Toilet	shared
Toilet system	manual Jabsco
Wash basin	yes
Shower	shared

MACHINERY

No of engines	1
Make	Volvo Penta
Type	MD22
HP	57,00
kW	41,90
Fuel	diesel
Year installed	1993
Engine hours	485 (2-4-2015)
Engine cooling system	freshwater heat exchanger
Drive	shaft
Engine controls	bowden cable
Gearbox	mechanical
Bowthruster	electric
Exhaust	watercooled
Propeller type	folding
Propeller blades	3
Propeller shaft material	stainless steel
Shaft lubrication	water
Manual bilge pump	yes
Electric bilge pump	yes
Electrical installation	12 / 220 Volt
Start battery	165 Ah
Service battery	2x 165 Ah
Bowthruster battery	200 Ah



Battery monitor	yes
Battery charger	Philippi
Shorepower	with cable

NAVIGATION

Compass	White Star
Depth sounder	Autohelm Depth
Log	Autohelm Speed
Windset	Autohelm Wind
Repeater	at chart table Autohelm Multi
VHF	Ray 240E
Autopilot	Autohelm 6000
Rudder angle indicator	Autohelm Rudder
Radar	Furuno
GPS	In Raymarine C80
Plotter	Raymarine C80
Electronis chart(s)	yes

EQUIPMENT

Fixed windscreen	yes
Sprayhood	yes
Cockpit cover	yes
Cockpit table	yes
Bathing platform	yes
Boarding ladder	stainless steel
Anchor	CQR Plough
Anchor chain	yes
Windlass	electrical
Capstan	yes
Deck wash	yes
Sea railing	wire



Grab rail (superstructure)	teak
Railing side opening gates	yes
Pushpit	yes
Pulpit	yes
Lifejackets	yes
Lifebuoy	yes
Fenders	yes
Mooring lines	yes
TV	Akai
TV receiver	yes
Radio-cd player	Sony
Cockpit speakers	yes
Speakers in salon	yes
Fire extinguisher	yes

RIGGING

Rigging	sloop
Standing rigging	wire
Brand mast	Seldén
Material mast	aluminium
Spreaders	2
Mainsail	yes
Stoway mast	yes
Genoa	yes
Genoa furler	Furlex
Reefing System	main in-mast furling
Backstay adjuster	mechanical Seldén (Hasselfors)
Boomvang	gasspring
Primary sheet winch	2x Lewmar 30
Genoa sheetwinches	2x Lewmar 54
Halyard winches	2x Lewmar 40 on mast



Spinnaker winch

2x Lewmar 40

Reefing winch

1x Lewmar 40



HALLBERG RASSY 39



HALLBERG RASSY 39



HALLBERG RASSY 39



HALLBERG RASSY 39



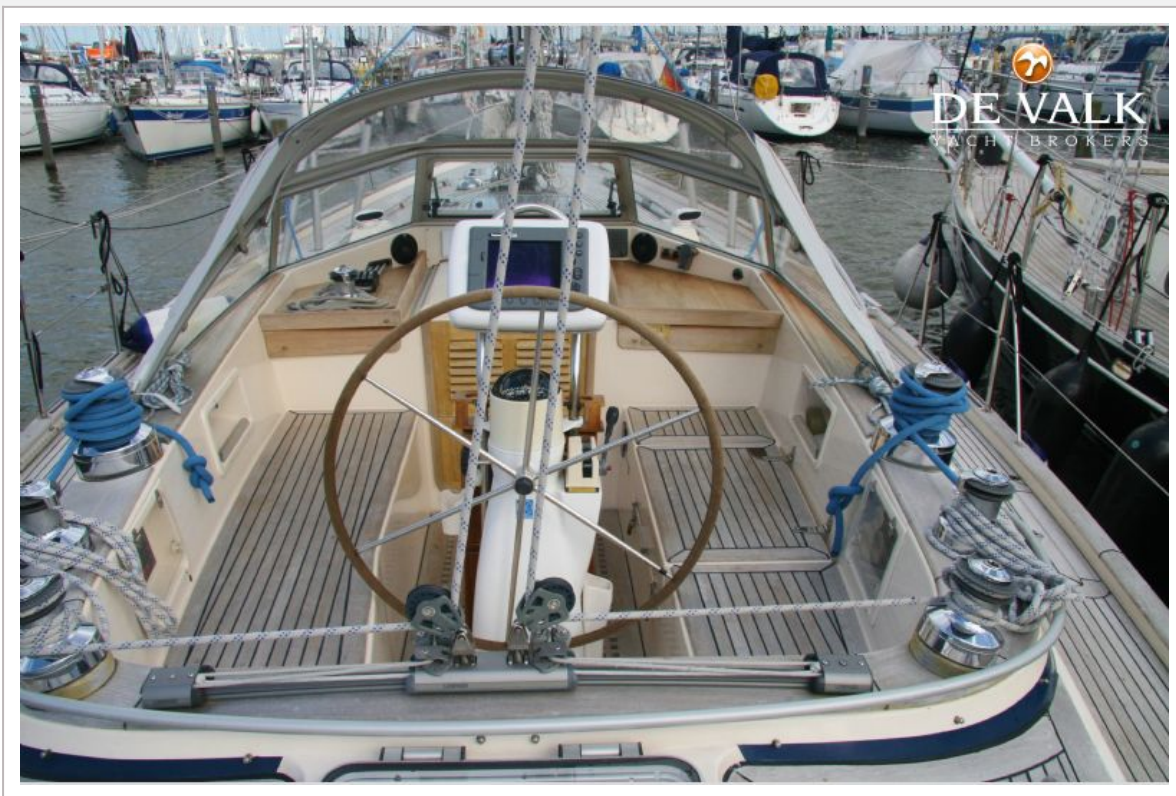
HALLBERG RASSY 39



HALLBERG RASSY 39



HALLBERG RASSY 39



HALLBERG RASSY 39



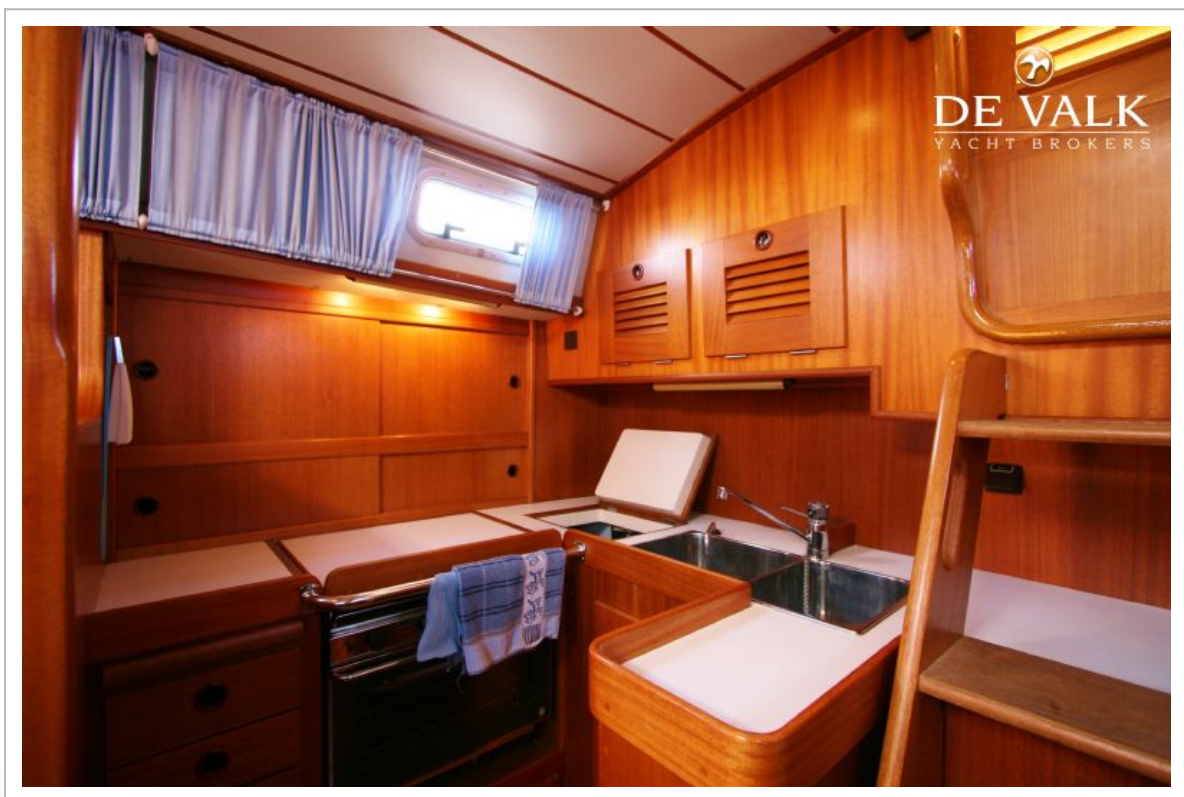
HALLBERG RASSY 39



HALLBERG RASSY 39



HALLBERG RASSY 39



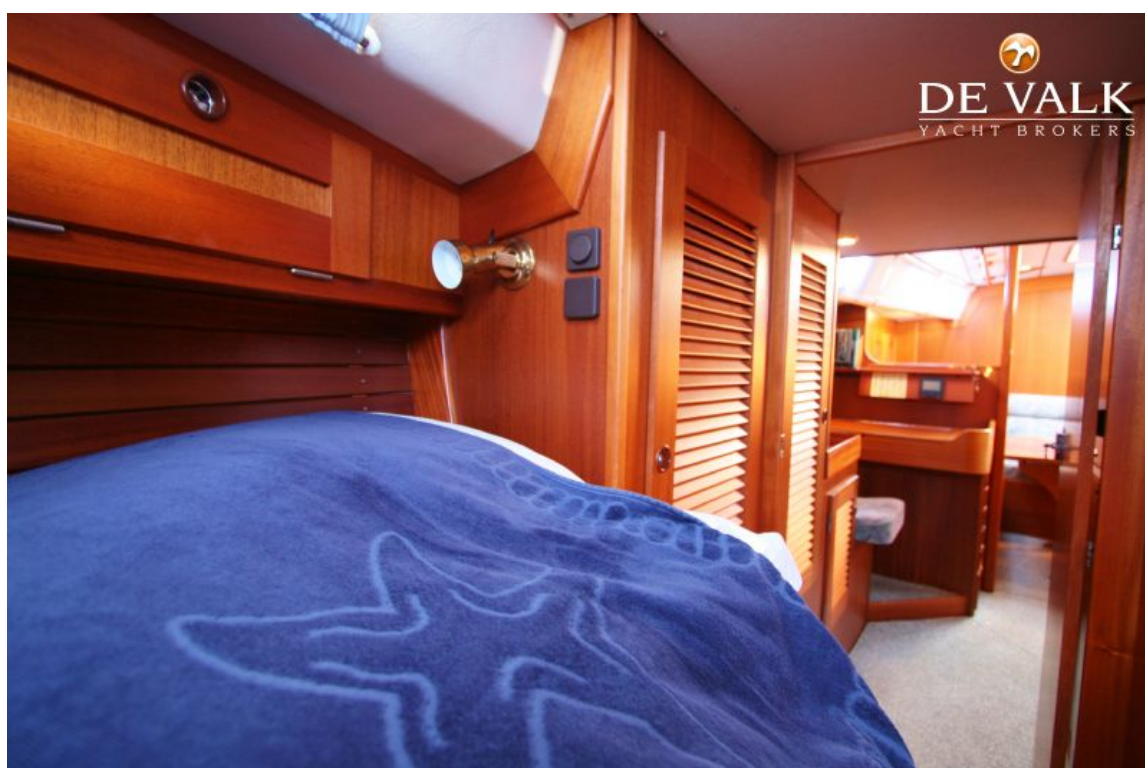
HALLBERG RASSY 39



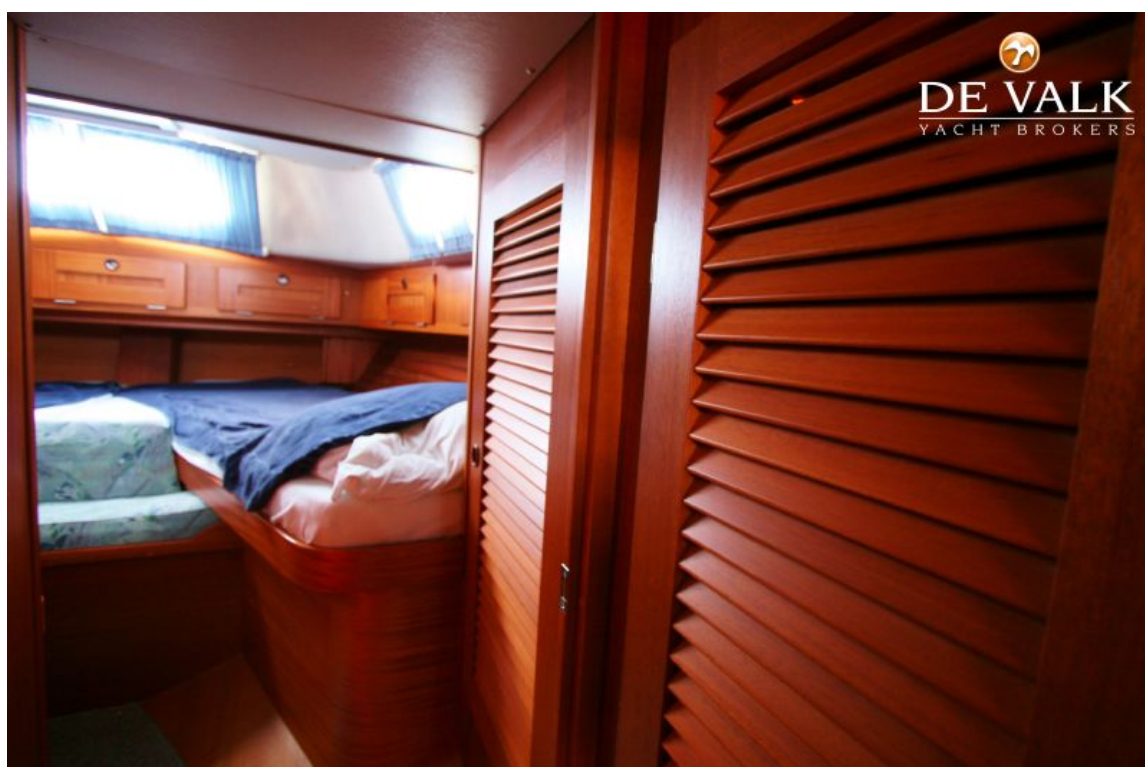
HALLBERG RASSY 39



HALLBERG RASSY 39



HALLBERG RASSY 39



HALLBERG RASSY 39



HALLBERG RASSY 39

